



Laramie Energy

SURFACE POST JOB REPORT

CC 0697-10-13E 05-045-24530
S:15 T:6S R:97W Garfield CO

CallSheet #: 95398
Proposal #: 82765



SURFACE Post Job Report

Attention: Mr. Aaron Duncan | (406) 498-4526 | aduncan@laramie-energy.com
Laramie Energy
1700 Lincoln Street, Suite 3950 | Denver, CO 80203

Dear Mr. Aaron Duncan,

Thank you for the opportunity to provide cementing services on this well. American Cementing strives to achieve complete customer satisfaction. If you have any questions regarding the services or data provided, please contact American Cementing at any time.

Sincerely,

Krystal Schell

Field Engineer I | (719) 992-1830 | krystal.schell@americacementing.com

Field Office 28730 US-6, Rifle, CO 81650
Phone: (970) 657-1187

Job Details & Summary

Geometry

Type	Function	OD (in)	ID (in)	Weight (lb/ft)	Thread	Top (ft)	Bottom (ft)	Excess (%)
Casing	Outer	18	17.5	93.45	n/a	0	80	0
Open Hole	Outer	n/a	14.75	n/a	n/a	80	2060	10
Open Hole	Outer	n/a	14.75	n/a	n/a	2060	2560	10
Casing	Inner	9.625	8.921	36	LTC	0	2560	0

Equipment / People

Unit Type	Unit	Power Unit	Employee #1
Cement Trailer Float	CTF-246	TRC-244	Matthew Bonin
Field Storage Silo	FSS-477		
Light Duty Vehicles	LDV-128		Gerron McClure
Light Duty Vehicles	LDV-168		Shawn Levings
Cement Pump Float	CPF-011	TRH-1140	Jacob Kirchenwitz

Timing

Event	Date/Time
ERTS	04/23/2025 00:00
Call Out	4/24/2025 00:00
Depart Facility	4/24/2025 02:00
On Location	4/24/2025 06:00
Rig Up Iron	4/24/2025 07:00
Job Started	4/24/2025 09:26
Job Completed	4/24/2025 12:42
Rig Down Iron	4/24/2025 13:45
Depart Location	4/24/2025 14:00

General Job Information

Metrics	Value
Well Fluid Density	9 lb/gal
Well Fluid Type	WBM
Rig Circulation Vol	1000 bbls
Rig Circulation Time	3 hours
Calculated Displacement	195.6 bbls
Actual Displacement	195 bbls
Total Spacer to Surface	40 bbls
Total CMT to Surface	60 bbls
Well Topped Out	No
Top Out Volume	N/A bbls

Job Details

Metrics	Value
Flare Prior to Job	No
Flare Prior to Job	N/A units
Flare During Job	No
Flare During Job	N/A units
Flare at End of Job	No
Flare at End of Job	N/A units
Well Full Prior to Job	Yes
Well Fluid Density Into Well	9 lb/gal
Well Fluid Density Out of Well	9 lb/gal

Job Details (cont.)

Metrics	Value
BHCT	86 °F
BHST	118 °F

Water Analysis

Metrics	Value	Recommended
Water Source	Upright Rig Tank	
Temperature	68 °F	50-80 °F
pH Level	6	5.5-8.5
Chlorides	100 mg/L	0-3000 mg/L
Total Alkalinity	100	0-1000
Total Hardness	10 mg/L	0-500 mg/L
Carbonates	10 mg/L	0-100 mg/L
Sulfates	100 mg/L	0-1500 mg/L
Potassium	100 mg/L	0-3000 mg/L
Iron	10 mg/L	0-300 mg/L

Circulation

Lost Circulation Experienced

No

Job Execution Information

Fluid	Product	Function	Density (lb/gal)	Yield (ft ³ /sk)	Water Rq. (gal/sk)	Water Rq. (gal/bbl)	Volume (sks)	Volume (bbl)	Designed Top (ft)
1	IntegraGuard EZ II	Spacer	10.00			36.82		40.00	0
2	Lead	Lead	12.30	2.30	12.92		674.00	275.83	0
3	Tail	Tail	12.80	2.06	11.07		185.00	67.97	2060
4	Displacement	DisplacementFinal	8.34			42.00		195.00	0

Job Fluid Details

Fluid	Type	Fluid	Product	Function	Conc.	Uom
1	Spacer	IntegraGuard EZ II	S-8	StrengthRetgression	108.66	lb/bbl
1	Spacer	IntegraGuard EZ II	ASA-301	Viscosifier	3.50	lb/bbl
1	Spacer	IntegraGuard EZ II	XCem-311	Defoamer	0.80	lb/bbl
2	Lead	Lead	ASTM TYPE IL	Cement	100.00	%
2	Lead	Lead	A-10	Accelerator	5.00	%BWOB
2	Lead	Lead	A-2	Accelerator	2.00	lb/sk
2	Lead	Lead	A-7P	Accelerator	1.00	lb/sk
2	Lead	Lead	IntegraSeal PHENO	LostCirculation	3.00	lb/sk
2	Lead	Lead	IntegraSeal POLI	LostCirculation	0.25	lb/sk
2	Lead	Lead	STATIC FREE	Other	0.01	lb/sk
2	Lead	Lead	XCem-311	Defoamer	0.30	%BWOB
3	Tail	Tail	ASTM TYPE IL	Cement	100.00	%
3	Tail	Tail	A-10	Accelerator	5.00	%BWOB
3	Tail	Tail	A-2	Accelerator	2.50	lb/sk
3	Tail	Tail	A-7P	Accelerator	2.00	lb/sk
3	Tail	Tail	IntegraSeal PHENO	LostCirculation	3.00	lb/sk
3	Tail	Tail	IntegraSeal POLI	LostCirculation	0.25	lb/sk
3	Tail	Tail	STATIC FREE	Other	0.01	lb/sk
3	Tail	Tail	XCem-311	Defoamer	0.30	%BWOB

Job Logs

Line	Event	Date (MM/DD/YY)	Time (HH:MM)	Density (lb/gal)	Pump Rate (bpm)	Pump Volume (bbls)	Pipe Pressure (psi)	Comment
1	ARRIVED ON LOCATION	4/24/2025	06:00					ARRIVED ON LOCATION PER CUSTOMER REQUEST 06:00
2	HAZARD ASSESMENT	4/24/2025	06:05					
3	SPOT EQUIPMENT	4/24/2025	06:10					
4	PRE RIG UP SAFETY MEETING	4/24/2025	06:15					
5	RIGGED UP	4/24/2025	07:00					
6	PRE JOB SAFETY MEETING	4/24/2025	09:00					
7	STAB CEMENT HEAD	4/24/2025	09:15					
8	START JOB	4/24/2025	09:26					START JOB
9	PRESSURE TEST LINES 2000PSI	4/24/2025	09:27	8.34	1	1	2000	PRESSURE TEST LINES 2000PSI
10	START 40 BBLs INTRAGUARD EZ II SPACER @10.0	4/24/2025	09:29	10	4	1	165	START 40 BBLs INTRAGUARD EZII SPACER @10.0
11	END OF INTRAGUARD SPACER	4/24/2025	09:45	10	4	40	160	END OF INTRAGUARD EZII SPACER
12	START 275.8 BBL LEAD SLURRY @ 12.3	4/24/2025	09:45	12.3	4	1	77	START 275.8 BBL LEAD SLURRY @ 12.3 (2.30,12.92) 674 TOTAL SACKS
13	50 BBLs GONE ON LEAD SLURRY	4/24/2025	09:53	12.3	5	50	66	
14	100 BBLs GONE ON LEAD SLURRY	4/24/2025	10:02	12.3	5	100	75	
15	150 BBLs GONE ON LEAD SLURRY	4/24/2025	10:11	12.3	5	150	81	
16	200 BBLs GONE ON LEAD SLURRY	4/24/2025	10:20	12.3	5	200	82	
17	250 BBLs GONE ON LEAD SLURRY	4/24/2025	10:30	12.3	5	250	81	
18	END OF LEAD SLURRY	4/24/2025	10:48	12.3	4	278.8	80	END OF LEAD SLURRY
19	START 68 BBL TAIL SLURRY @ 12.8	4/24/2025	10:48	12.8	5	1	79	START 68 BBL TAIL SLURRY @ 12.8 (2.06,11.07) 185 TOTAL SACKS
20	50 BBLs GONE ON TAIL SLURRY	4/24/2025	10:58	12.8	5	50	200	50 BBLs GONE ON TAIL SLURRY
21	END OF TAIL SLURRY	4/24/2025	11:04	12.8	4	68.8	197	END OF TAIL SLURRY
22	SHUTDOWN/ DROP TOP PLUG	4/24/2025	11:05					SHUTDOWN/ DROP TOP PLUG
23	START BBL FRESH WATER DISPLACEMENT	4/24/2025	11:09	8.34	4	1	104	START 195.6 BBL FRESH WATER DISPLACEMENT
24	50 BBLs GONE ON DISPLACEMENT	4/24/2025	11:16	8.34	5	50	320	
25	100 BBLs GONE ON DISPLACEMENT	4/24/2025	11:38	8.34	5	100	350	
26	150 BBLs GONE ON DISPLACEMENT	4/24/2025	11:48	8.34	5	150	800	
27	PRESSURE BEFORE SLOWING RATE	4/24/2025	11:53	8.34	5	185	802	PRESSURE BEFORE SLOWING RATE -
28	SLOW RATE	4/24/2025	11:53	8.34	4	185	558	SLOW RATE -
29	FINAL LIFT PRESSURE TO LAND PLUG	4/24/2025	11:55	8.34	4	195	759	FINAL LIFT PRESSURE TO LAND PLUG -



Line	Event	Date (MM/DD/YY)	Time (HH:MM)	Density (lb/gal)	Pump Rate (bpm)	Pump Volume (bbls)	Pipe Pressure (psi)	Comment
30	LAND PLUG	4/24/2025	11:55	8.34	4	196	1242	LAND PLUG -
31	CHECK FLOAT	4/24/2025	12:01	8.34				RETURNED 1 BBL BACK UPON FLOAT CHECK/ CIRCULATED 60 BBLS CEMENT AND 40 BBLS SPACER TO SURFACE
32	MIX AND PUMP 10 BBLS DOWN PARASITE LINE	4/24/2025	12:02	15.8	1	1		MIX AND PUMP 10 BBLS DOWN PARASITE LINE
33	PRESSURE TEST CASING 1600PSI	4/24/2025	12:12	15.8				TEST CASING 1600 PSI FOR 30 INUTES BEGINNING TEST PRESSURE 1605 PSI
34	END OF CASING TEST	4/24/2025	12:42					END OF TEST PRESSURE 1538PSI
35	POST JOB SAFETY MEETING	4/24/2025	12:45					
36	RIGGED DOWN	4/24/2025	13:45					
37	PRE CONVOY SAFETY MEETING	4/24/2025	13:55					
38	LOCATION DPEARTURE	4/24/2025	14:00					
39	END OF JOB	4/24/2025	14:00					END OF JOB

Pump Diagrams

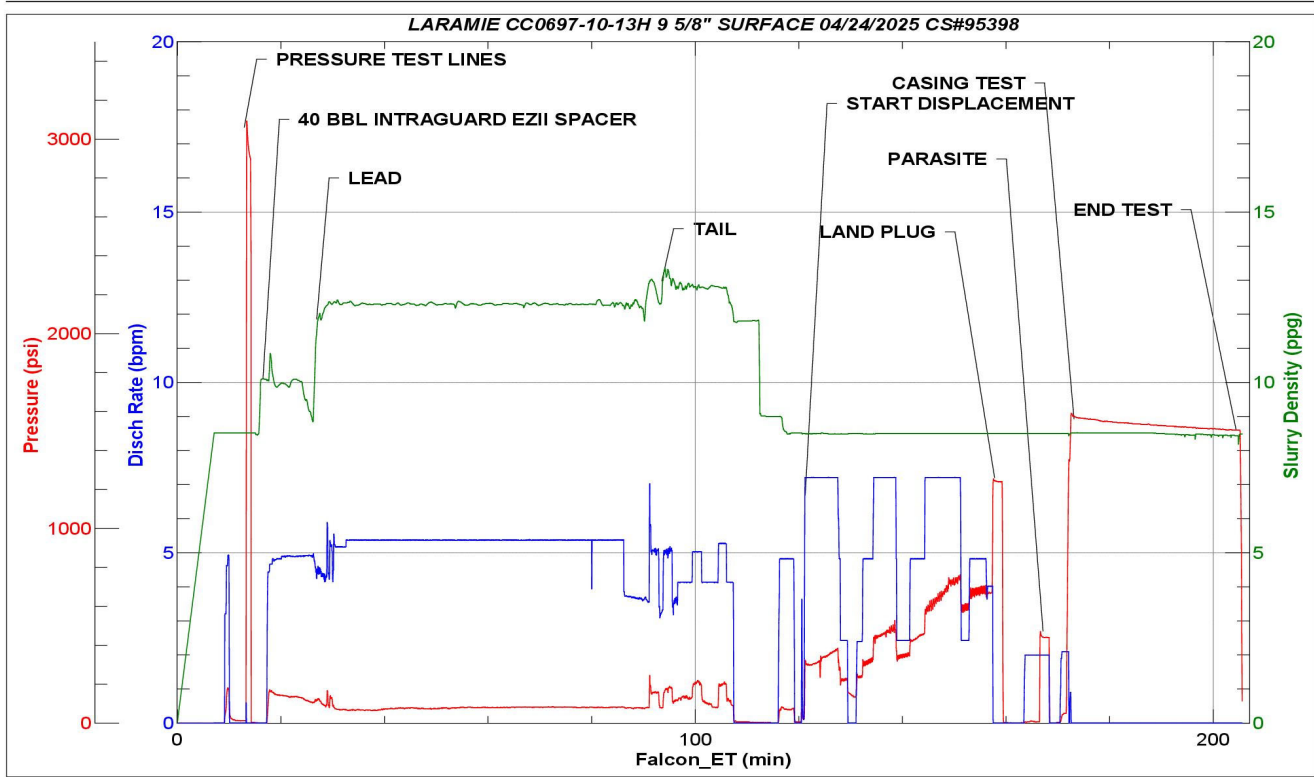


JobMaster Program Version 5.01C1

Job Number: 95398

Customer: LARAMIE

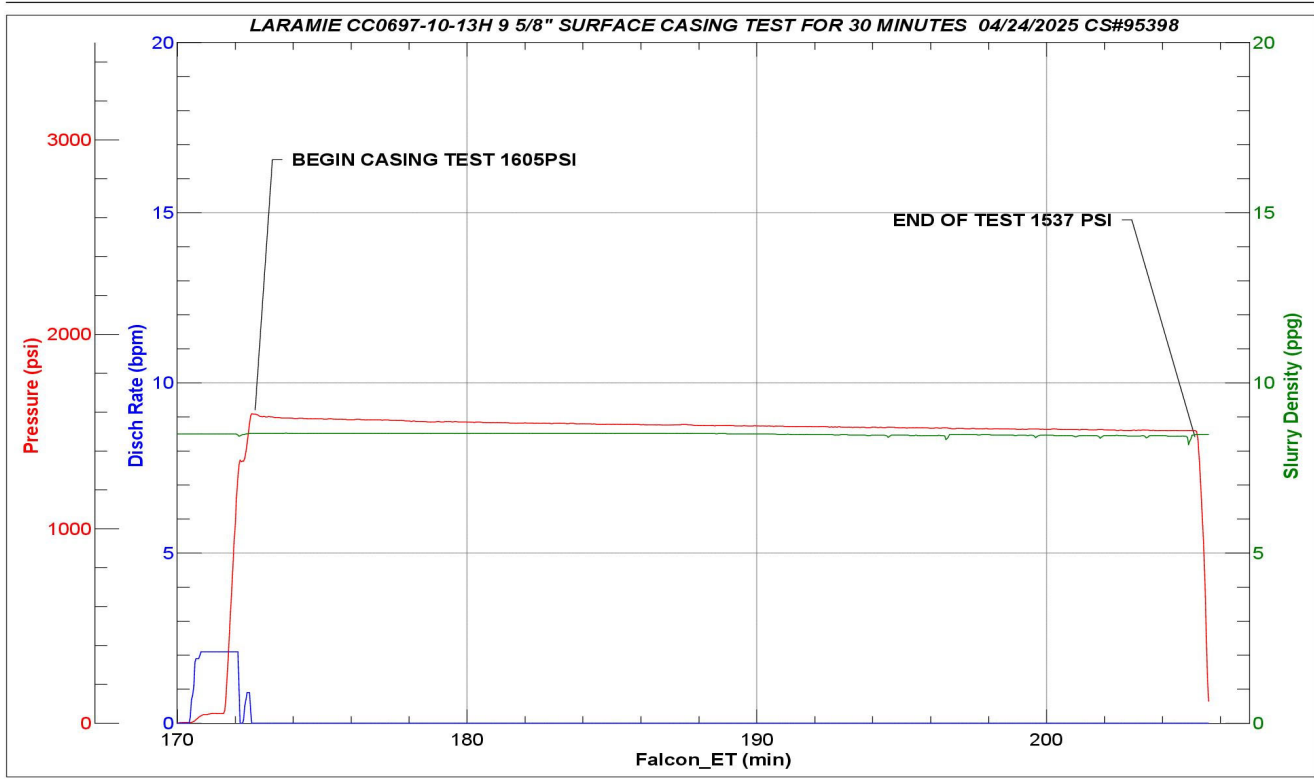
Well Name: CC0697-10 13H



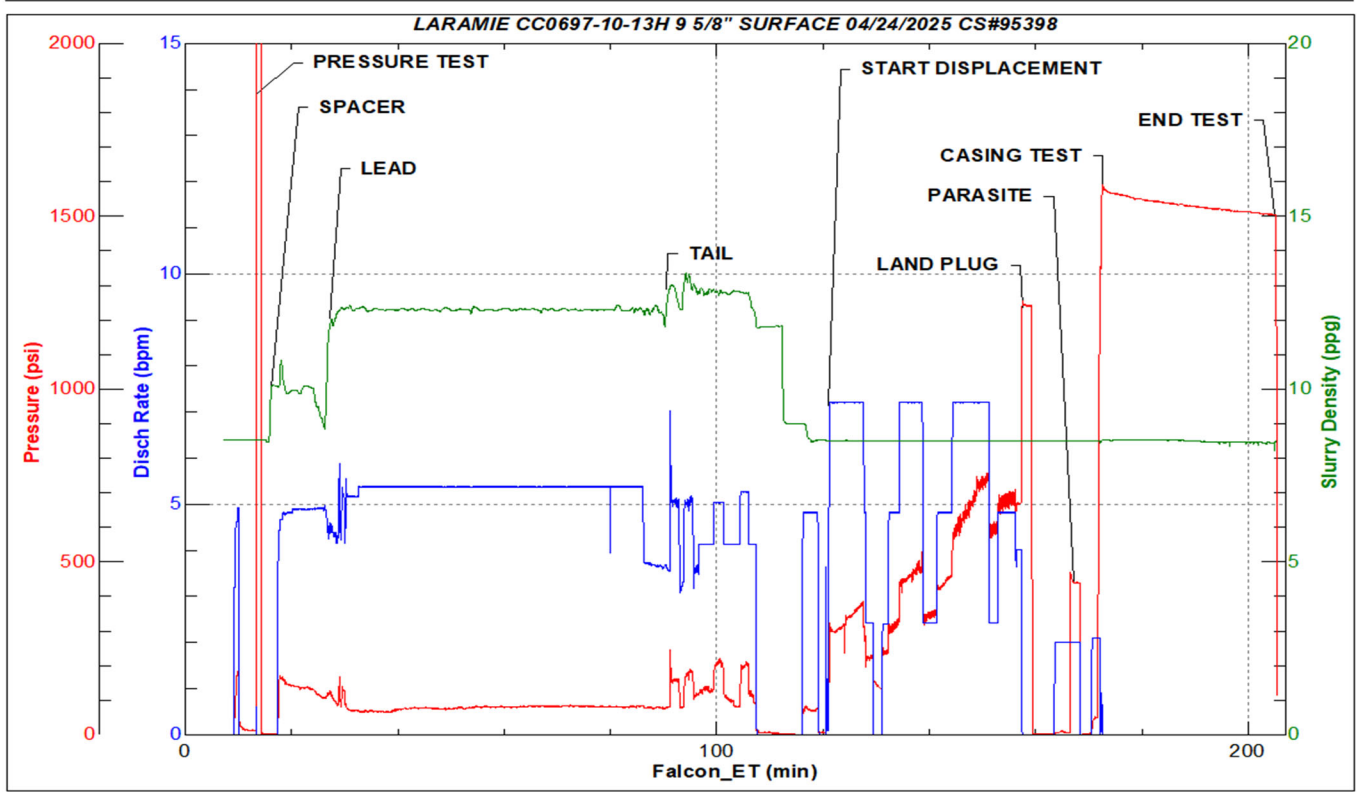
Job Start: Thursday, April 24, 2025



JobMaster Program Version 5.01C1
Job Number: 95398
Customer: LARAMIE
Well Name: CC0697-10 13H



Job Start: Thursday, April 24, 2025



Job Start: Thursday, April 24, 2025