



Laramie Energy

LONG STRING POST JOB REPORT

CC 0697-10-13E 05-045-24530
S:15 T:6S R:97W Garfield CO

CallSheet #: 95872
Proposal #: 83598



LONG STRING Post Job Report

Attention: Mr. Aaron Duncan | (406) 498-4526 | aduncan@laramie-energy.com

Laramie Energy

1700 Lincoln Street, Suite 3950 | Denver, CO 80203

Dear Mr. Aaron Duncan,

Thank you for the opportunity to provide cementing services on this well. American Cementing strives to achieve complete customer satisfaction. If you have any questions regarding the services or data provided, please contact American Cementing at any time.

Sincerely,

Addison Kneale

Field Engineer I | (904) 228-9560 | addison.kneale@americacementing.com

Field Office 28730 US-6, Rifle, CO 81650
Phone: (970) 657-1187

Job Details & Summary

Geometry

Type	Function	OD (in)	ID (in)	Weight (lb/ft)	Thread	Top (ft)	Bottom (ft)	Excess (%)
Casing	Outer	9.625	8.921	36	n/a	0	2560	0
Open Hole	Outer	n/a	8.75	n/a	n/a	2560	7511	30
Open Hole	Outer	n/a	8.75	n/a	n/a	7511	9848	30
Casing	Inner	4.5	4	11.6	Buttress	0	9848	0

Equipment / People

Unit Type	Unit	Power Unit	Employee #1
Cement Trailer Float	CTF-246	TRC-202	Daniel Balint
Field Storage Silo	FSS-479		
Field Storage Silo	FSS-476		
Light Duty Vehicles	LDV-168		James Lujan
Cement Pump Float	CPF-011	TRH-1140	Joel Carrasco

Timing

Event	Date/Time
ERTS	06/13/2025 15:00
Call Out	6/13/2025 09:30
Depart Facility	6/13/2025 12:08
On Location	6/13/2025 14:00
Rig Up Iron	6/13/2025 14:10
Job Started	6/13/2025 18:32
Job Completed	6/13/2025 21:55
Rig Down Iron	6/13/2025 22:05
Depart Location	6/13/2025 23:30

General Job Information

Metrics	Value
Well Fluid Density	9 lb/gal
Well Fluid Type	WBM
Rig Circulation Vol	650 bbls
Rig Circulation Time	1.5 hours
Calculated Displacement	153 bbls
Actual Displacement	153 bbls
Total Spacer to Surface	14 bbls
Total CMT to Surface	0 bbls
Well Topped Out	N/A

Job Details

Metrics	Value
Well Full Prior to Job	Yes
Well Fluid Density Into Well	9 lb/gal
Well Fluid Density Out of Well	9 lb/gal

Job Details (cont.)

Metrics	Value
BHCT	170 °F
BHST	240 °F

Water Analysis

Metrics	Value	Recommended
Water Source	Upright Rig Tank	
Temperature	68 °F	50-80 °F
pH Level	8	5.5-8.5
Chlorides	150 mg/L	0-3000 mg/L
Total Alkalinity	100	0-1000
Total Hardness	100 mg/L	0-500 mg/L
Carbonates	0 mg/L	0-100 mg/L
Sulfates	150 mg/L	0-1500 mg/L
Potassium	150 mg/L	0-3000 mg/L
Iron	0 mg/L	0-300 mg/L

Circulation

Lost Circulation Experienced
No

Job Execution Information

Fluid	Product	Function	Density (lb/gal)	Yield (ft ³ /sk)	Water Rq. (gal/sk)	Water Rq. (gal/bbl)	Volume (sks)	Volume (bbl)	Designed Top (ft)
1	Water	Flush	8.34			42.00		10.00	1569
2	Mud Flush	Flush	8.45			40.86		40.00	1742
3	Water	Flush	8.34			42.00		10.00	2436
4	Lead	Lead	12.50	2.35	12.95		835.00	349.30	2600
5	Tail	Tail	13.00	2.02	10.17		464.00	166.89	7511
6	Displacement	DisplacementFinal	8.34			42.00		154.00	0
7	Parasite Line Topout	Topout	15.60	1.15	5.05		30.00	6.16	0

Job Fluid Details

Fluid	Type	Fluid	Product	Function	Conc.	Uom
2	Flush	Mud Flush	SAPP	Surfactant	10.00	lb/bbl
2	Flush	Mud Flush	SS-201	Surfactant	0.50	gal/bbl
4	Lead	Lead	ASTM TYPE IL	Cement	100.00	%
4	Lead	Lead	A-5	Accelerator	5.00	%BWOW
4	Lead	Lead	BA-60	GasMigration	0.30	%BWOB
4	Lead	Lead	GW-86	Viscosifier	0.08	%BWOB
4	Lead	Lead	IntegraSeal PHENO	LostCirculation	2.00	lb/sk
4	Lead	Lead	IntegraSeal POLI	LostCirculation	0.25	lb/sk
4	Lead	Lead	R-3	Retarder	0.50	%BWOB
4	Lead	Lead	R-7C	Retarder	0.10	%BWOB
4	Lead	Lead	STATIC FREE	Other	0.01	lb/sk
4	Lead	Lead	XCem-1009	Extender	10.00	lb/sk
4	Lead	Lead	XCem-311	Defoamer	0.30	%BWOB
4	Lead	Lead	XCem-532	FluidLoss	0.25	%BWOB
5	Tail	Tail	CLASS G	Cement	50.00	%
5	Tail	Tail	FLY ASH (POZZOLAN)	Extender	50.00	%
5	Tail	Tail	AEXT-1011	Extender	4.00	lb/sk
5	Tail	Tail	BA-60	GasMigration	0.30	%BWOB
5	Tail	Tail	BENTONITE	Viscosifier	6.00	%BWOB
5	Tail	Tail	GW-86	Viscosifier	0.10	%BWOB
5	Tail	Tail	IntegraSeal PHENO	LostCirculation	0.50	lb/sk
5	Tail	Tail	IntegraSeal POLI	LostCirculation	0.25	lb/sk
5	Tail	Tail	R-3	Retarder	0.10	%BWOB
5	Tail	Tail	S-8	StrengthRetrogression	20.00	%BWOB
5	Tail	Tail	STATIC FREE	Other	0.01	lb/sk
5	Tail	Tail	XCem-311	Defoamer	0.30	%BWOB
5	Tail	Tail	XCem-532	FluidLoss	0.40	%BWOB
7	Topout	Parasite Line Topout	ASTM TYPE IL	Cement	100.00	%

Job Logs

Line	Event	Date (MM/DD/YY)	Time (HH:MM)	Density (lb/gal)	Pump Rate (bpm)	Pump Volume (bbls)	Pipe Pressure (psi)	Comment
1	Callout	6/13/2025	09:30					CALLOUT @ 09:30/ CUSTOMER REQUESTED CREW ON LOCATION @ 15:30
2	Depart Location	6/13/2025	12:08					DEPART RCO YARD
3	Arrive On Location	6/13/2025	14:00					ARRIVE ON CUSTOMER LOCATION
4	Safety Meeting	6/13/2025	14:05					PRE RIG UP SAFETY MEETING
5	Rig Up Iron	6/13/2025	14:10					RIG IN IRON
6	Safety Meeting	6/13/2025	18:06					PRE JOB SAFETY MEETING
7	Start Job	6/13/2025	18:32					
8	Pressure Test Lines	6/13/2025	18:37	8.34	5.5	10	151	FILL LINES/ PRESSURE TEST TO 4500 PSI
9	Pump Spacer	6/13/2025	18:39	8.45	5.5	40	145	PUMP 40 BBLs OF MUD FLUSH
10	Pump Spacer	6/13/2025	18:46	8.34	5.5	10	120	PUMP 10 BBLs OF FRESH WATER SPACER
11	Pump Lead Cement	6/13/2025	18:50	12.5	5.5	1	202	START 349.3 BBLs OF LEAD CEMENT @ 12.5 PPG (2.35,12.95) 835 SKS
12	Pump Lead Cement	6/13/2025	18:58	12.5	6.5	50	261	50 BBLs PUMPED
13	Pump Lead Cement	6/13/2025	19:06	12.5	6.5	100	348	100 BBLs PUMPED
14	Pump Lead Cement	6/13/2025	19:14	12.5	6.5	150	366	150 BBLs PUMPED
15	Pump Lead Cement	6/13/2025	19:22	12.5	6.5	200	365	200 BBLs PUMPED
16	Pump Lead Cement	6/13/2025	19:30	12.5	5.5	250	275	250 BBLs PUMPED
17	Pump Lead Cement	6/13/2025	19:39	12.5	5.5	300	269	300 BBLs PUMPED
18	Pump Lead Cement	6/13/2025	19:48	12.5	5.5	349	270	END OF LEAD SLURRY
19	Pump Tail Cement	6/13/2025	19:48	13	5.5	1	366	START 166.9 BBLs OF TAIL CEMENT @ 13 PPG (2.02,10.17) 464 SKS
20	Pump Tail Cement	6/13/2025	19:58	13	5	50	328	50 BBLs PUMPED
21	Pump Tail Cement	6/13/2025	20:06	13	6.5	100	450	100 BBLs PUMPED
22	Pump Tail Cement	6/13/2025	20:15	13	4	150	276	150 BBLs PUMPED
23	Pump Tail Cement	6/13/2025	20:19	13	4	167	176	END OF TAIL SLURRY
24	Shutdown	6/13/2025	20:19					SHUTDOWN/ WASH TO PIT
25	Drop Top Plug	6/13/2025	20:30					DROP TOP PLUG
26	Pump Displacement	6/13/2025	20:30	8.34	5.5	1	211	START 153 BBLs OF FRESH WATER DISPLACEMENT/ HAD TO START DISPLACEMENT @ 5 BPM DUE TO PARASITE AIR BEING DISABLED. PARASITE WAS AT RATE 33 BBLs INTO DISPLACEMENT.
27	Pump Displacement	6/13/2025	20:37	8.34	5	50	331	50 BBLs PUMPED
28	Pump Displacement	6/13/2025	20:45	8.34	10	100	1423	100 BBLs PUMPED

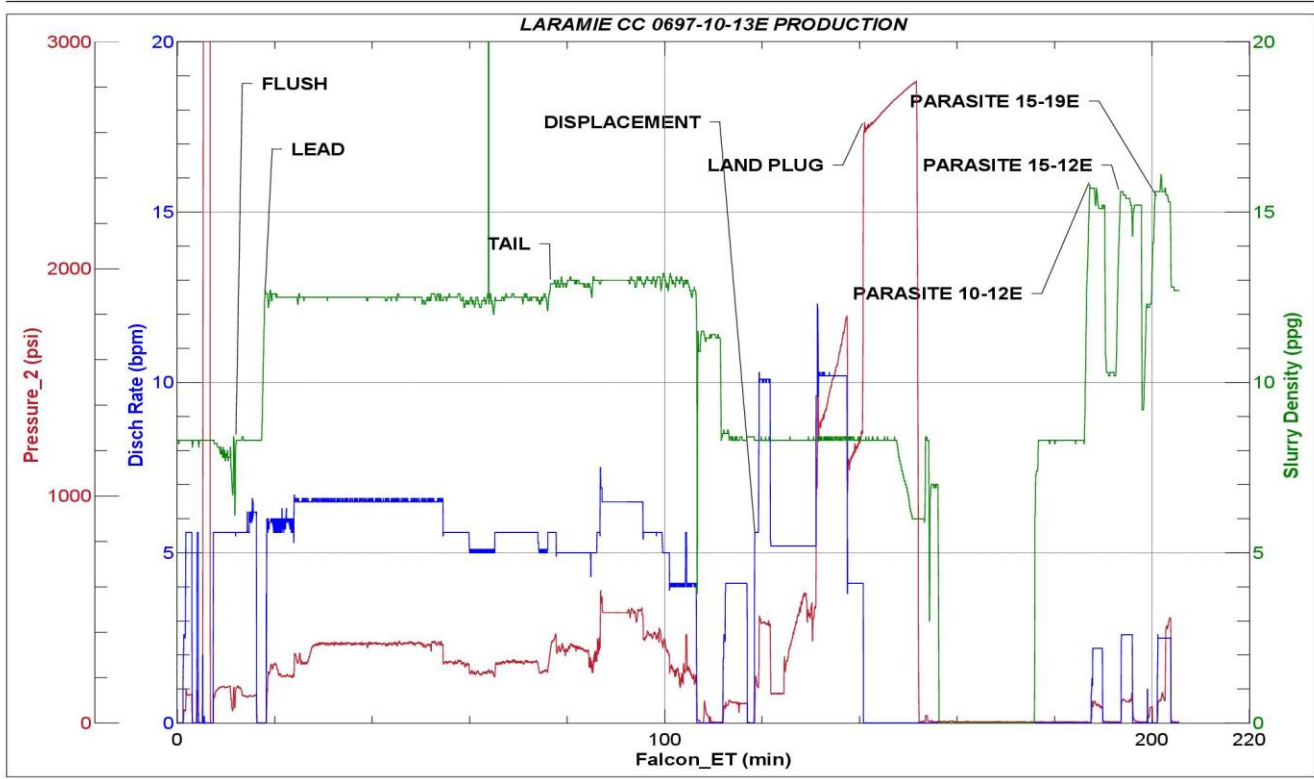


Line	Event	Date (MM/DD/YY)	Time (HH:MM)	Density (lb/gal)	Pump Rate (bpm)	Pump Volume (bbls)	Pipe Pressure (psi)	Comment
29	Pressure before slow	6/13/2025	20:49	8.34	10	143	1788	PRESSURE BEFORE SLOW @ 1788 PSI
30	Slow Pump Rate	6/13/2025	20:49	8.34	4	143	1121	SLOW PUMP RATE @ 1121 PSI
31	Final circulating pressure	6/13/2025	20:52	8.34	4	153	1291	FCP @ 1291 PSI
32	Land Plug	6/13/2025	20:52	8.34	4	153	2630	PLUG LANDED @ 2630
33	Check Floats	6/13/2025	21:02					2 BBLS BACK UPON FLOAT CHECK
34	Pump Cement	6/13/2025	21:38	15.6	2	1	78	TOP OUT PARASITE LINE 6 BBLS @ 15.6 PPG (1.19,5.05) 30 SKS 10-13E
35	Pump Cement	6/13/2025	21:41	15.6	2	6	92	END OF TOP OUT
36	Pump Cement	6/13/2025	21:44	15.6	2	1	95	TOP OUT PARASITE LINE 6 BBLS @ 15.6 PPG (1.19,5.05) 30 SKS 15-12E
37	Pump Cement	6/13/2025	21:47	15.6	2	6	91	END OF TOP OUT
38	Pump Cement	6/13/2025	21:52	15.6	2	1	95	TOP OUT PARASITE LINE 6 BBLS @ 15.6 PPG (1.19,5.05) 30 SKS 15-19E
39	Pump Cement	6/13/2025	21:55	15.6	2	6	91	END OF TOP OUT
40	End Job	6/13/2025	22:00					END OF CEMENTING SERVICES
41	Rig Down Iron	6/13/2025	22:05					PRE RIG DOWN SAFETY MEETING
42	Depart Location	6/13/2025	23:30					DEPART CUSTOMER LOCATION

Pump Diagrams



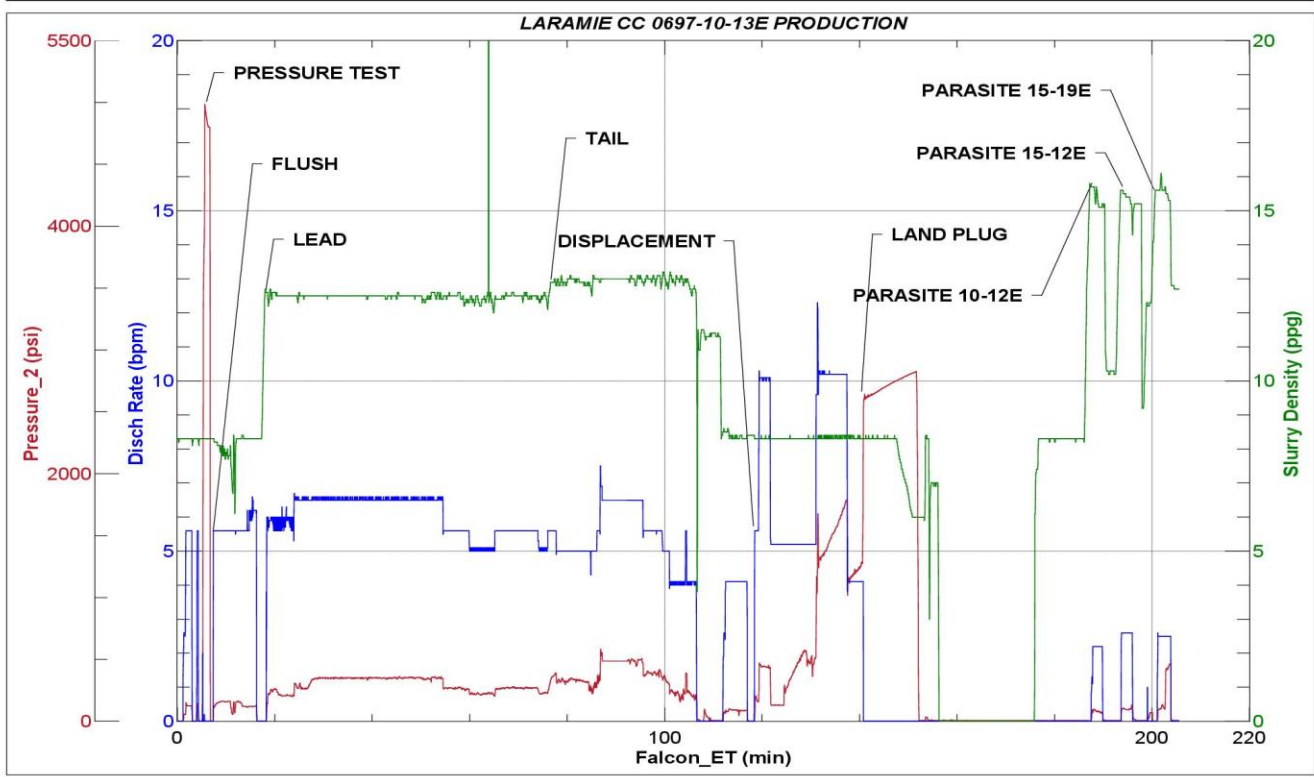
JobMaster Program Version 5.01C1
Job Number: 95872
Customer: LARAMIE
Well Name: CC 0697 10-13E



Job Start: Saturday, June 14, 2025



JobMaster Program Version 5.01C1
Job Number: 95872
Customer: LARAMIE
Well Name: CC 0697 10-13E



Job Start: Saturday, June 14, 2025