

**PROJECT DETAILS: Garfield County, CO**  
 Geodetic System: US State Plane 1983  
 Datum: North American Datum 1983  
 Ellipsoid: GRS 1980  
 Zone: Colorado Central Zone  
 System Datum: Mean Sea Level

**REFERENCE INFORMATION**  
 Co-ordinate (N/E) Reference: Well CC 0697-10-13E - Slot B-7, True North  
 Vertical (TVD) Reference: RKB=30' @ 8533.0usft (H&P #542)  
 Section (VS) Reference: Slot - B-7(0.0N, 0.0E)  
 Measured Depth Reference: RKB=30' @ 8533.0usft (H&P #542)  
 Calculation Method: Minimum Curvature

**Project: Garfield County, CO**  
 Site: CC 0604-15-08 Pad  
 Well: CC 0697-10-13E  
 Wellbore: B-7  
 Design: Design #4  
 Latitude: 39.526199  
 Longitude: -108.199036  
 Ground Level: 8503.0  
 RKB=30' @ 8533.0usft (H&P #542)

**ANNOTATIONS**

| MD     | Inc   | Azi    | TVD    | +N/-S  | +E/-W | VSec   | Departure | Annotation  |
|--------|-------|--------|--------|--------|-------|--------|-----------|---|
| 291.0  | 4.40  | 3.40   | 290.7  | 11.1   | 0.7   | 11.1   | 11.2      | First MWD Survey @ 291.0' MD / 290.7' TVD                 |
| 4265.8 | 27.25 | 6.52   | 3997.7 | 1366.1 | -59.3 | 1367.1 | 1383.5    | HL Crossed @ 4265.8' MD / 3997.7' TVD                     |
| 4480.9 | 28.10 | 7.08   | 4187.9 | 1465.8 | -47.3 | 1466.5 | 1484.0    | Sec. Line Crossed @ 4480.9' MD / 4187.9' TVD              |
| 4693.0 | 27.55 | 5.77   | 4374.9 | 1565.5 | -37.0 | 1565.9 | 1584.0    | HL Crossed @ 4693.0' MD / 4374.9' TVD                     |
| 7711.5 | 4.80  | 7.47   | 7166.0 | 2629.8 | 32.7  | 2628.3 | 2652.4    | TOG @ 7711.5' MD / 7166.0' TVD (1165.9' FSL & 691.7' FEL) |
| 9963.0 | 5.20  | 241.50 | 9413.3 | 2595.7 | -60.8 | 2596.4 | 2782.3    | TD @ 9963.0' MD / 9413.3' TVD (1129' FSL & 784.1' FEL)    |

**DESIGN TARGET DETAILS**

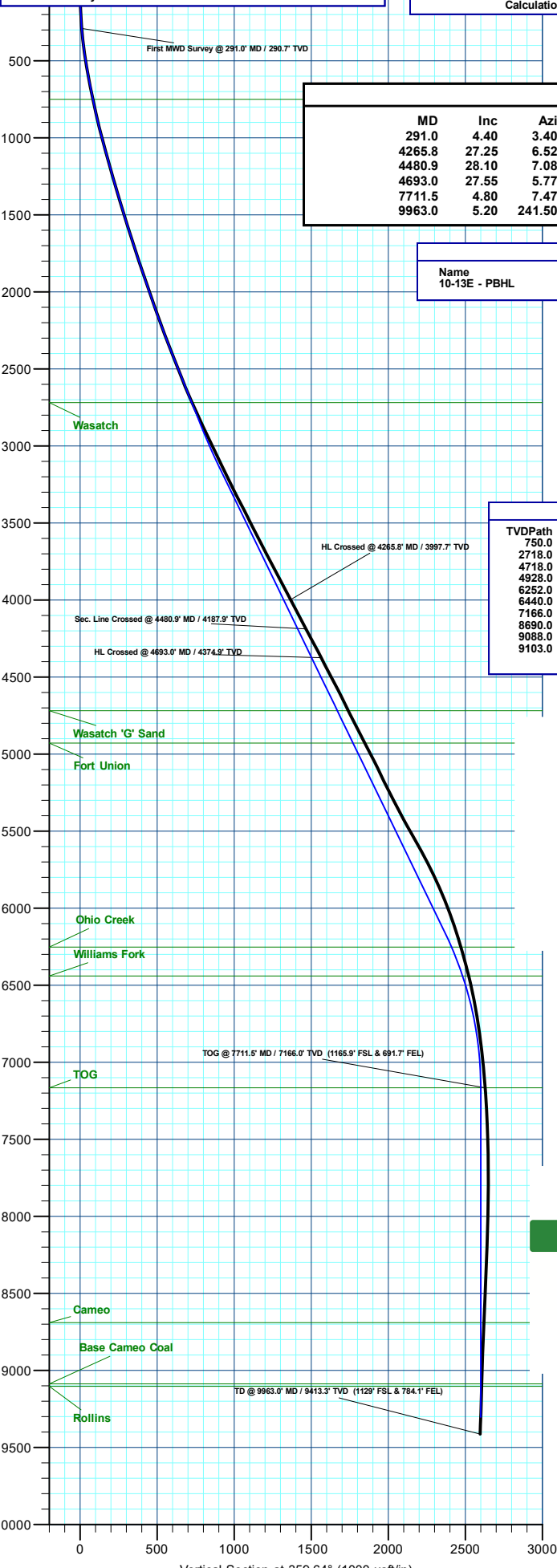
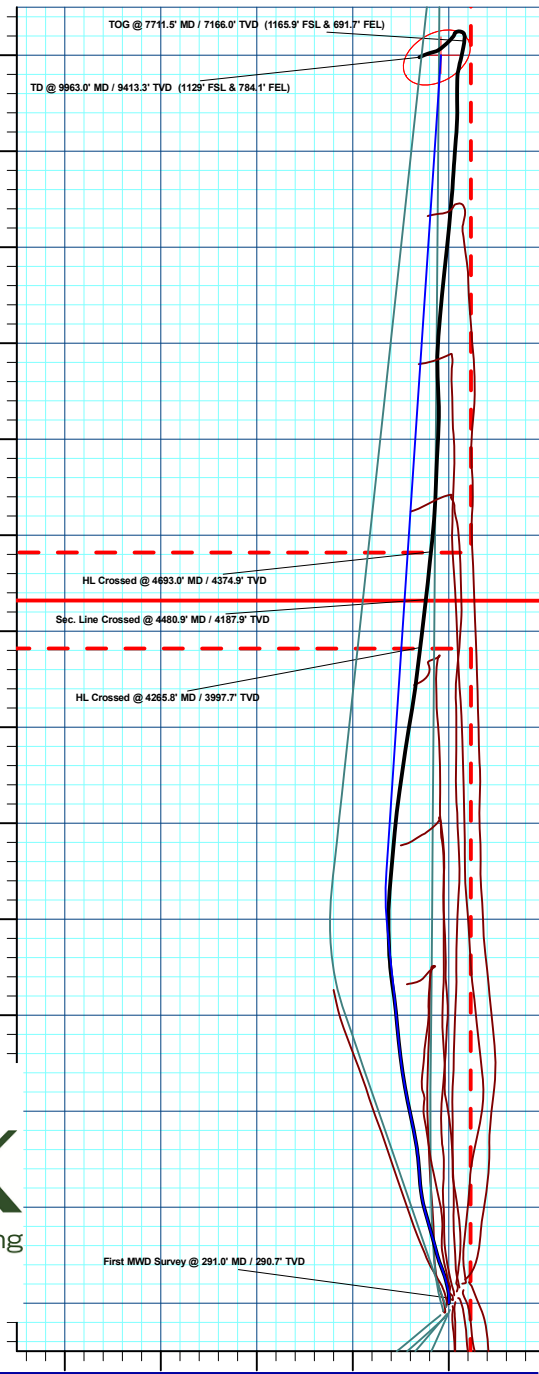
| Name          | TVD    | +N/-S  | +E/-W | Northing   | Easting    | Latitude  | Longitude   |
|---------------|--------|--------|-------|------------|------------|-----------|-------------|
| 10-13E - PBHL | 9303.0 | 2600.4 | -16.2 | 1630455.11 | 2238830.74 | 39.533338 | -108.199093 |

**FORMATION TOP DETAILS**

| TVDPATH | MDPATH | Formation        |
|---------|--------|------------------|
| 750.0   | 756.7  | Mahogany         |
| 2718.0  | 2831.7 | Wasatch          |
| 4719.0  | 5045.4 | Wasatch 'G' Sand |
| 4928.0  | 5278.9 | Fort Union       |
| 6252.0  | 6749.9 | Ohio Creek       |
| 6440.0  | 6951.3 | Williams Fork    |
| 7166.0  | 7690.0 | TOG              |
| 8690.0  | 9214.0 | Cameo            |
| 9088.0  | 9612.0 | Base Cameo Coal  |
| 9103.0  | 9627.0 | Rollins          |



**T M** Azimuths to True North  
 Magnetic North: 8.97°  
 Magnetic Field Strength: 50785.5nT  
 Dip Angle: 65.47°  
 Date: 6/10/2025  
 Model: HDGM2025



**WELL DETAILS: CC 0697-10-13E**

| +N/-S | +E/-W | Northing   | Easting    | Latitude  | Longitude   | Wellbore |
|-------|-------|------------|------------|-----------|-------------|----------|
| 0.0   | 0.0   | 1627855.38 | 2238769.66 | 39.526199 | -108.199036 | B-7      |

**Plan: Design #4 (CC 0697-10-13E/B-7)**  
 Created By: Will Jircik Date: 4:48, June 13 2025