



Form PS-102

R. 47 W

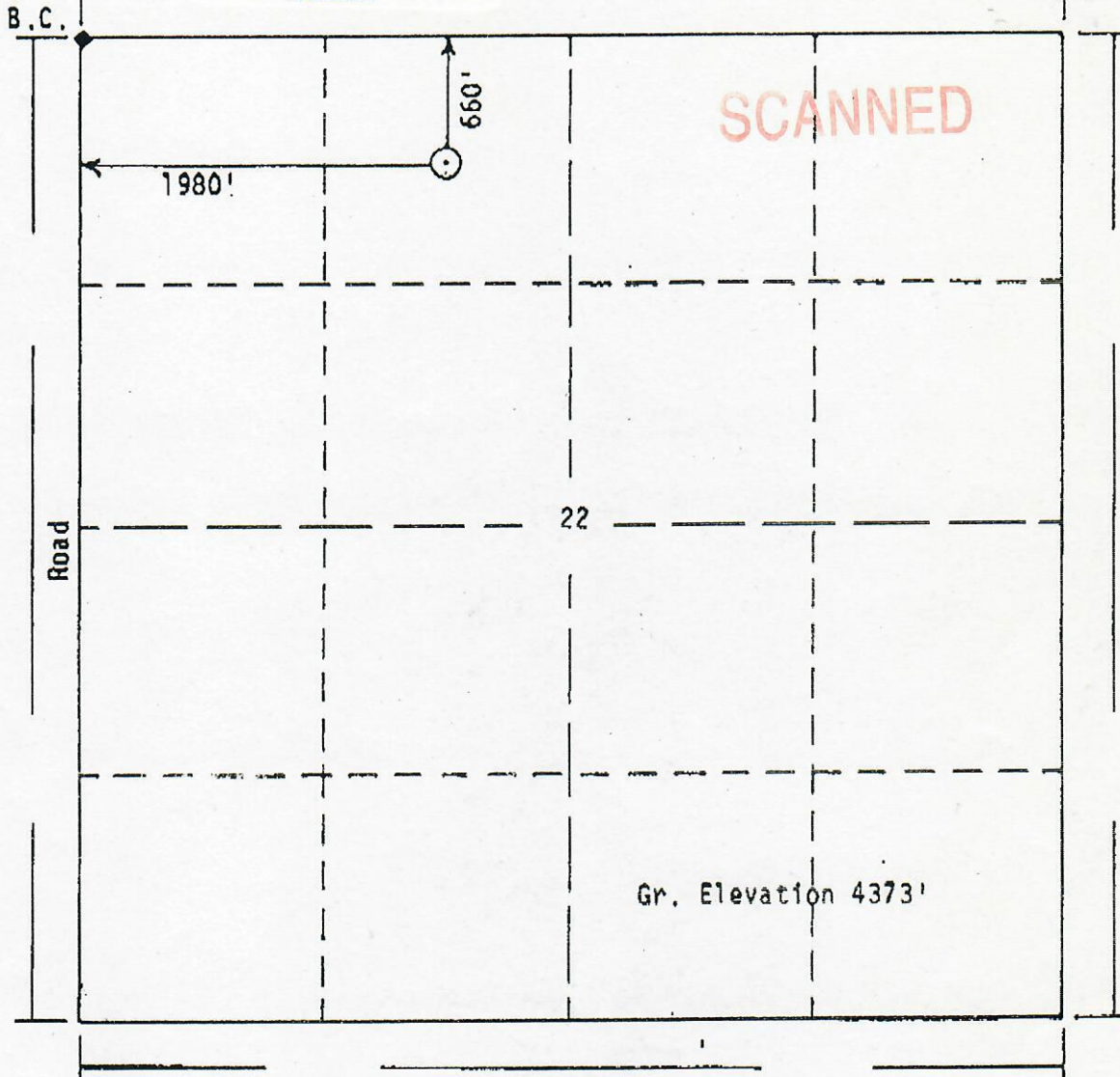
RECEIVED

DEC 07 1988

COLO. OIL & GAS CONS. BOARD



00515668



N

T. 13 S

Scale: 1"=1000'

Powers Elevation of Denver, Colorado has in accordance with a request from Pat Ungleich for Mull Drilling Co., Inc. determined the location of #2 Ervin "A" to be 660fn1, 1980fw1 Section 22, Township 13 S Range 47 W of the 6th Principal Meridian, Cheyenne County, Colorado

I hereby certify that this plan is an accurate representation of a survey showing the location of



Date: 12-6-88

Calvin Healy
 Licensed Land Surveyor No. 23501
 State of Colorado