



SCANNED

INTER-OFFICE CORRESPONDENCE

TO: Colorado Foremen
FROM: Doug Genrich
SUBJECT: Drilling Program
Sayles 24-29 #5X
Mount Pearl Field

OFFICE: Ft. Worth
DATE: 3/12/99

SURFACE LOCATION: 660' FSL & 1920' FWL SECTION 29-T13S-R47W

COUNTY: Cheyenne, Colorado
AFE: A7757
DHC: \$130M
CWC: \$260M (100% WI)
WINS: 46607

PROPOSED DEPTH: 5,490' MD
GRND ELEVATION: 4,328'
KB ELEVATION: 4,339'(11'KB)
API NUMBER: 05-
RIG: Cheyenne #5

ESTIMATED TOPS OF GEOLOGICAL MARKERS:

Table with 2 columns: FORMATION and TRUE VERTICAL DEPTH (KB) @ SURFACE LOCATION. Rows include FORT HAYES, DAKOTA, CHEYENNE, BLAINE SALT, STONE CORRAL, SHAWNEE, LANSING, MARMATON, CHEROKEE, ATOKA, MORROW, LOWER MORROW, and OBJECTIVE (St. Louis Porosity, TD..(90' into St. Louis)).

CASING PROGRAM:

Table with 7 columns: Hole Size, Setting Depth (Measured Depth), Size, Weight, Grade, Thread, Condition. Rows show 12-1/4" and 7-7/8" hole sizes with corresponding depths and casing specifications.

DV Tool @ 2340'



DRILLING PROGNOSIS

SCANNED

Prospect: **Remus**
 Well Name: **Sayles 24-29 #5X**
 Location: **Sec. 29, 13S 47W**
 Footages: **660 FSL 1920 FWL**
 County, St: **Cheyenne, CO**
 Field: **Mount Pearl**
 Spacing: **80 acre**

Est. GL: **4,328'**
 Est. KB: **4,339'**

AFE#:
 UPR WI: **100%**
 UPR NRI: **97.500%**

Offset Well
 Operator: **Champlin Petroleum Company**
 Name: **Sayles 24-29 #5**
 Location: **662 FSL 1988 FWL sec 29, T13S R47W**

<u>Estimated Formation Tops</u>	<u>Measured</u>	<u>Subsea</u>	
Fort Hays	1,280'	3,059'	
Dakota	1,759'	2,580'	
Cheyenne	2,140'	2,199'	
Blaine Salt	2,827'	1,512'	
Stone Corral	3,076'	1,263'	
Shawnee	4,080'	259'	
Lansing	4,357'	-18'	
Marmaton	4,727'	-388'	
Cherokee	4,862'	-523'	
Atoka	5,030'	-691'	
Morrow	5,196'	-857'	
Lower Morrow	5,397'	-1,058'	
St. Louis Porosity	5,414'	-1,075'	
TD (St. Louis + 90')	5,487'	-1,148'	
Primary Target	St. Louis Limestone	5,414'	-1,075'

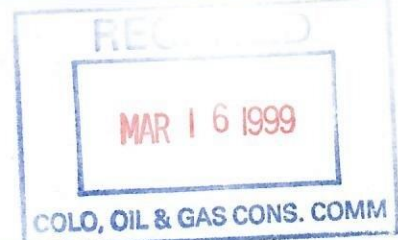
NOTES:

This well is a replacement for the Sayles #5 well.

Watch for lost circulation in the Morrow interval! If porosity is encountered, expect BHP as low as 580 psi due to Unit production.

Watch for lost circulation in the St. Louis pay interval! The Sayles #5 has produced over 125,000 BO, and may have depleted this zone.

Geological Consultant None.
Samples None.
Drill Stem Tests None.



Wireline Logging DIL from base of surface casing to TD
 LDT-CNL from 5100' to TD (hi-res playback over target zones)

<u>Contacts</u>	Dan Tarkington	Mike Wood	Kevin Wallace
Office:	817-321-7701	817-321-7707	817-321-6002
Office Fax:	817-321-7309	817-321-7309	817-321-7309
Home:	817-483-5924	817-924-7930	817-481-1954
Cellular:		817-312-9881	
E-Mail:	DanTarkington@upr.com Tarkman@aol.com		



SCANNED

CEMENTING PROGRAM:

Surface: Cement with 100SX of Type 3 plus, 3% CaCl₂ at 12 ppg & 2.39 CF/SX) provides 169' fillup of 132% excess.
Tail with 100SX type III plus 2% CaCl₂ (14.6 ppg, 1.39 CF/SX) provides 151' fillup w/100% excess (circ 5-10 bbls to pit)

Production: Lead with 50SX of POZ scavenger slurry at 11 ppg & 3.22 CF/SX) provides 707' fillup with no excess. Tail with 200SX Type III cem. plus .5% bwoc BA-10 + .3% bwoc CD-32. (14.4 ppg, 1.42 CF/SX) Top of cement with stage #1 at +/- 4,780' (50% excess on tail slurry)

DV Tool @ 2,340'. Cement with 275 SX of Type III plus 2.0% bwoc CaCl₂. (12. ppg, 2.37 CF/SX) Provides for +/- 1,637' fillup with 75% excess or calculated TOC at 700'

MUD PROGRAM:

Interval (TVD)	Mud Weight	Viscosity	Fluid Loss	Remarks
0'-400'	9.0ppg	34-40 sec	No Control	Fresh water native mud W/cedar fiber to treat losses.
400-3,800'	8.4-8.8 ppg	32-33 sec	No Control	Stay on fresh water with gel and polymer for viscosity sweeps.
3,800'-TD	8.8-9.0 ppg	55-60 sec	8-10 cc	Displace hole at 3,800' with premix. Raise LCM to 8-10 PPB by top of Lower Morrow Interval.
	DST's		48-52 sec	
	Logging		55-60 sec	
	Run csg		38-45 sec	

TESTING, LOGGING, CORING PROGRAMS:

Samples: None required

Cores-DSTs: As needed.

Mud Logger/Geologic Consultant: None Required.

Logging: At TD run DIL-GR from surf csg to TD, LDT-CNL-GR from 5100' - TD. In addition run LDT-CNL high res over target zones ..

Directional Surveys: Every 120' on surface hole and at intervals below the 8-5/8" shoe to TD using single shot instrument.
Drop survey on bit trips.
Strap pipe at TD.

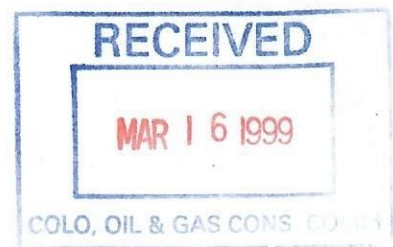
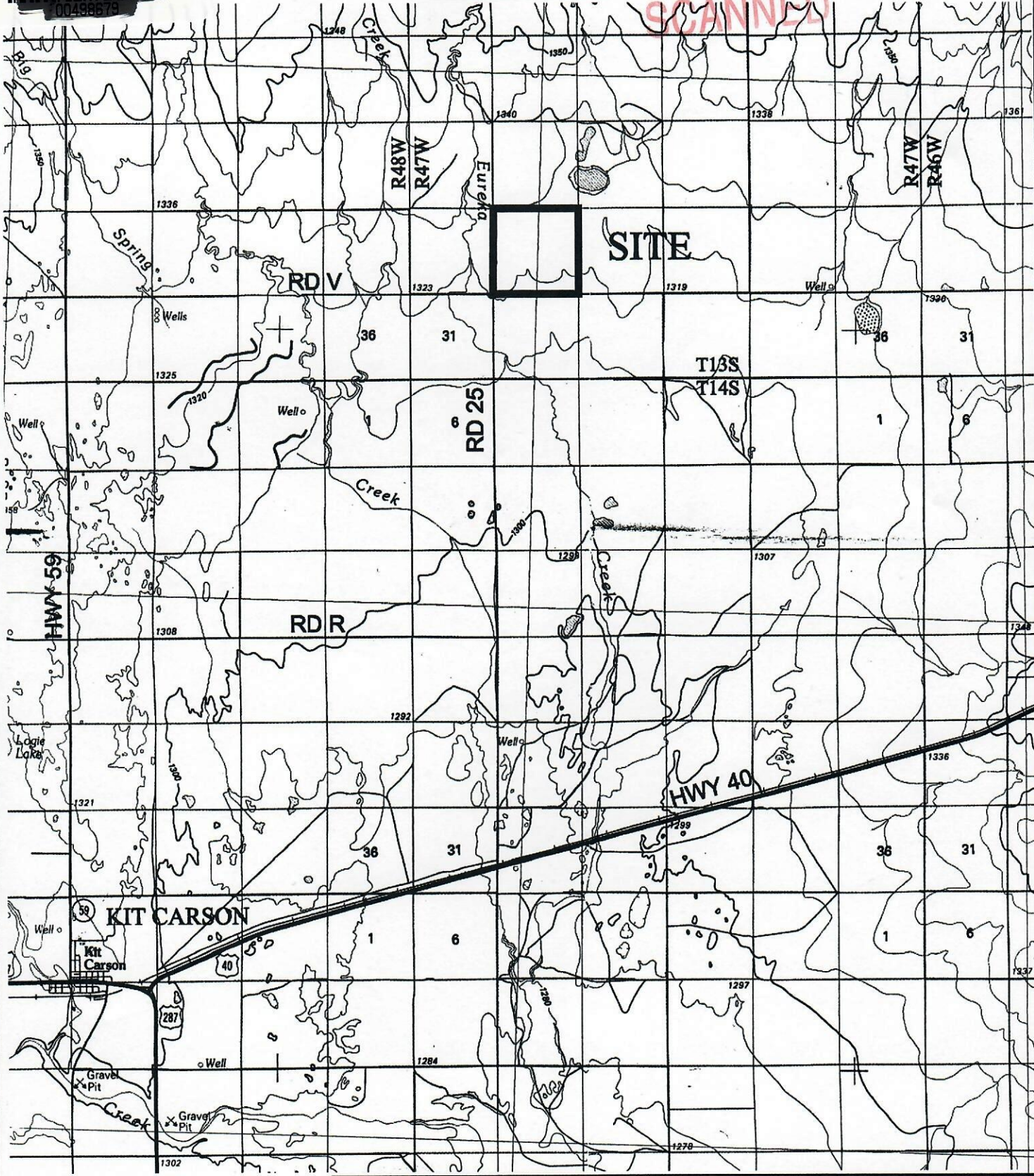


EXHIBIT "A"

SCANNED



Date: 3/5/1999 Time: 15:12:30 Scale: 1"=1000' Drawing File: Geosurv\Chey.dwg 99027.dwg.DWG (Plot)



1:100,000



LAND SURVEYING AND MAPPING
 520 STACY COURT SUITE 'B'
 LAFAYETTE, CO. 80026
 Ph 303 686 0379 Fx 303 665 6320

UPR UNION PACIFIC RESOURCES
 PREPARED FOR

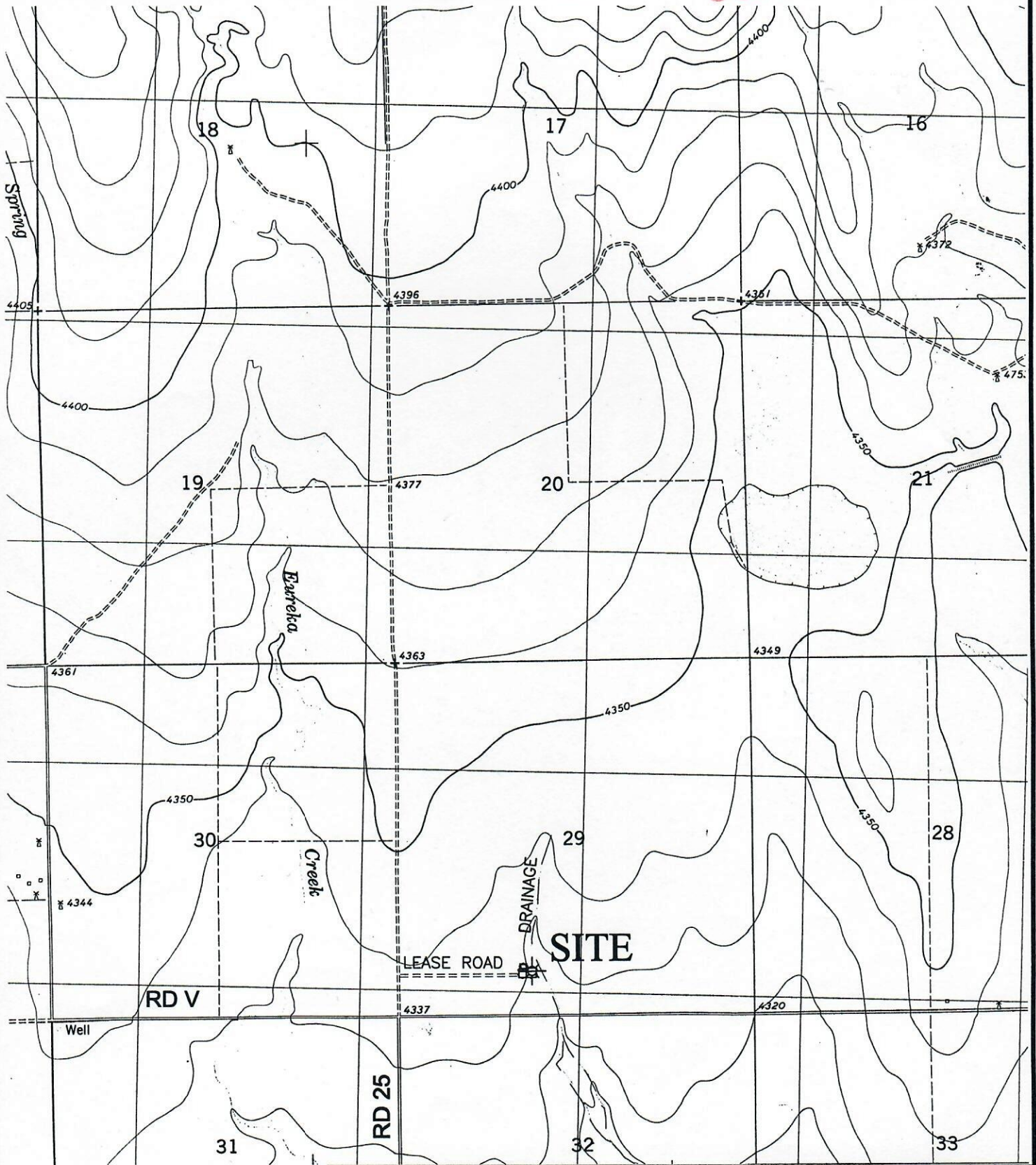
#5X SAYLES 24-29
 SW 1/4 SECTION 29 T13S R47W 6th PM
 CHEYENNE COUNTY, COLORADO

99027
 CHEYENNE WELLS



EXHIBIT "B"

SCANNED



Date: 3/5/1999
 Time: 16:12:30
 Scale: 1"=200'
 Drawing File: Geosurv\Chev.dwg\99027.dwg.DWG (Paul)

99027
EUREKA CREEK N



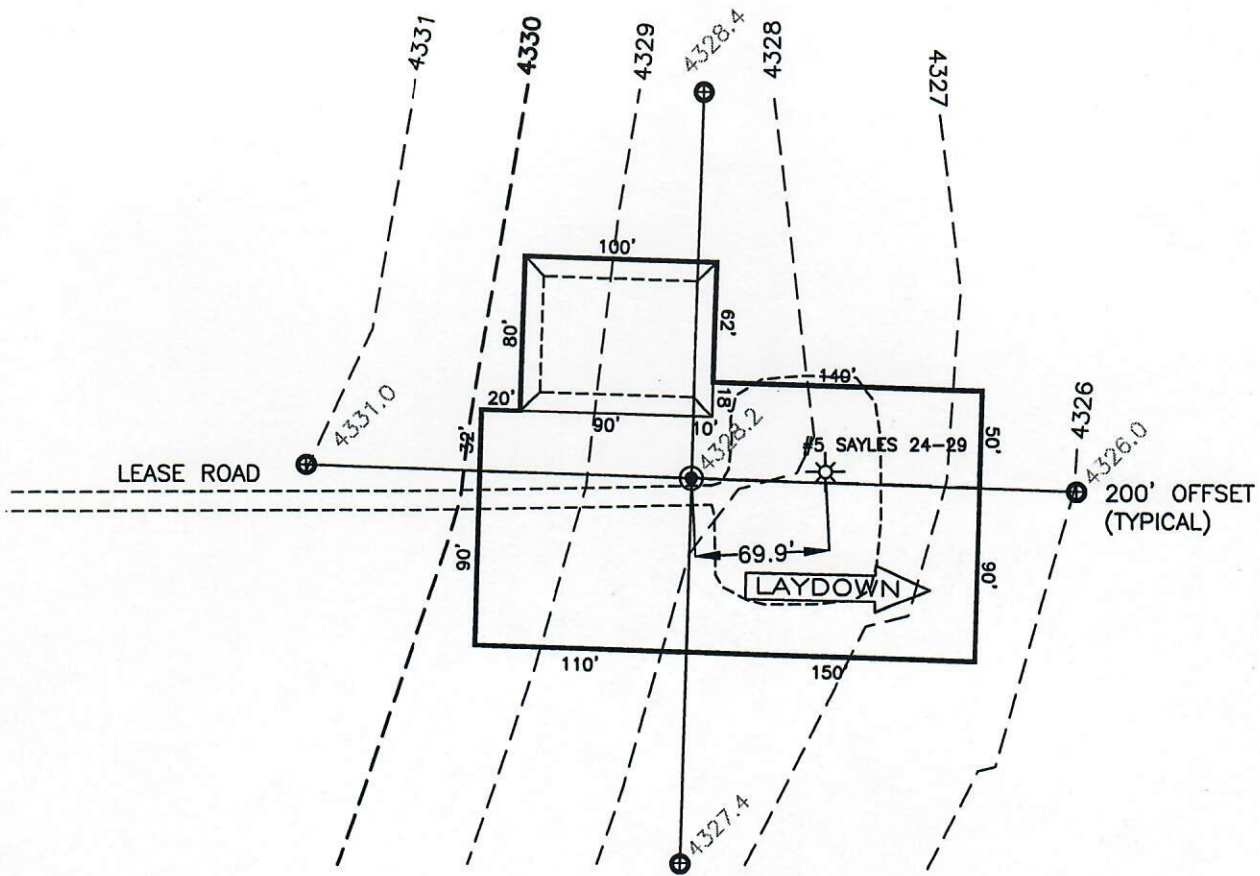
GEO SURV

LAND SURVEYING AND MAPPING
 520 STACY COURT SUITE 'B'
 LAFAYETTE, CO. 80026
 Ph 303 666 0379 Fx 303 665 6320

TOPOGRAPHIC MAP
 PREPARED FOR
UPR UNION PACIFIC RESOURCES
#5X SAYLES 24-29
 SW 1/4 SECTION 29 T13S R47W 6th PM
 CHEYENNE COUNTY, COLORADO

EXHIBIT "C3"

SCANNED



NOTES

1.) Notification to UNCC (1-800-922-1987) for underground utility locates placed 03/05/99, Ticket #81559. If access or well location deviates from staked location, UNCC must be notified three days prior to construction.



GEO SURV
LAND SURVEYING AND MAPPING
520 STACY COURT SUITE "B"
LAFAYETTE, CO. 80026
Ph 303 666 0379 Fx 303 665 6320

UFR PROPOSED PAD LAYOUT
PREPARED FOR
UNION PACIFIC RESOURCES
#5X SAYLES 24-29
SW 1/4 SECTION 29 T13S R47W 6th PM
CHEYENNE COUNTY, COLORADO