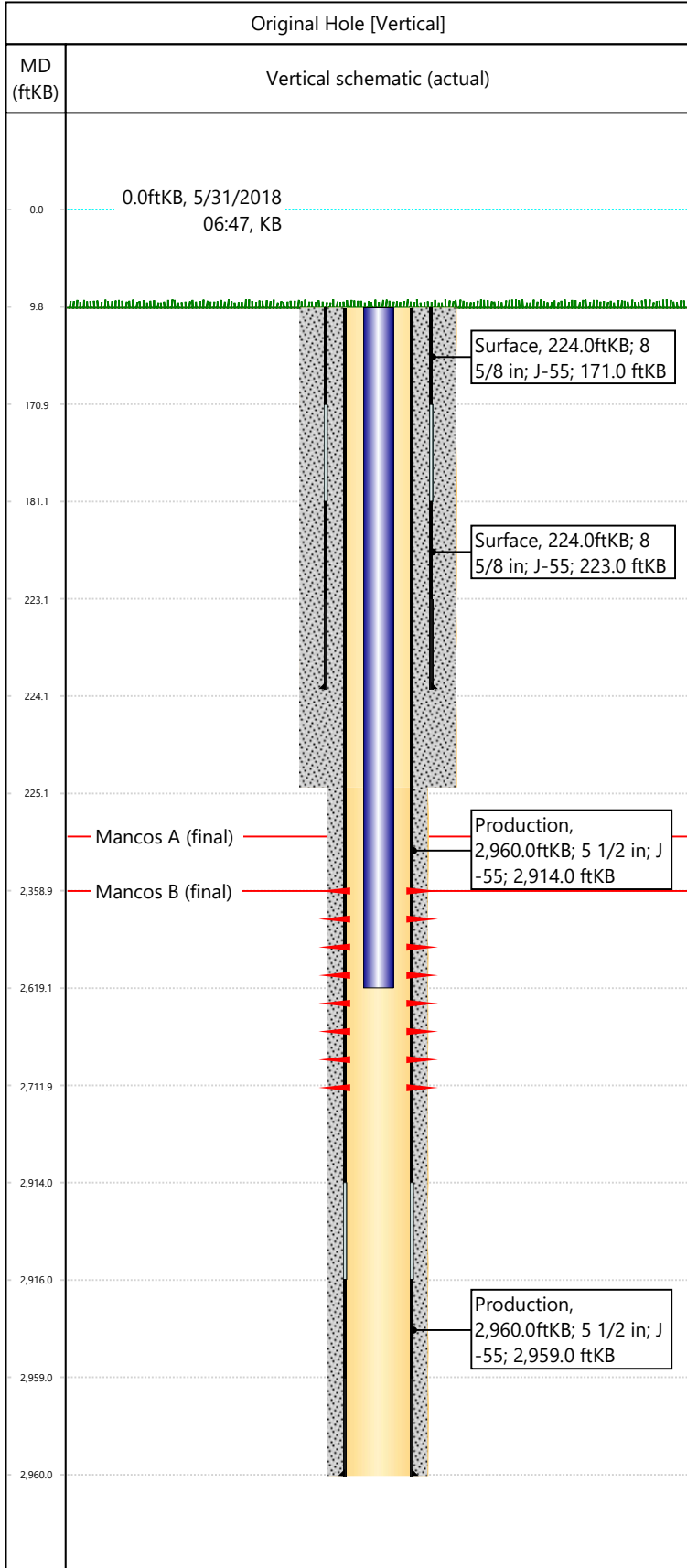


Well Name: DRAGON TRAIL UN 1091

API/UWI 05103094160000	Surface Legal Location SWNE-S19-T2S-R101W-6PM	Field Name Dragon Trail	License #	State/Province CO	Well Configuration Type Vertical
Original KB Elevation (ft) 6,450	KB-Tubing Head Distance (ft) 10	Spud Date 6/8/1990 00:00	Rig Release Date 6/22/1990 00:00	PBD (All) (KB) Original Hole - 2,920.0	Total Depth All (TVD) (KB) Original Hole - 2,960.0



Section Description	Size (in)	Btm Depth (ftKB)
Production	7 7/8	
Surface	12 1/4	
Surface	12 1/4	225.0
Production	7 7/8	2,960.0

Formation Name	Final Top MD (ftKB)
Mancos A	1,147.0
Mancos B	2,326.0

Csg Des	OD (in)	Wt/Len (lb/ft)	Grade	Set Depth (ftKB)
Surface	8 5/8	24.00	J-55	224.0
Production	5 1/2	15.50	J-55	2,960.0

Date	Top (ftKB)	Btm (ftKB)	Linked Zone
6/26/1990	2359	2712	Mancos B, Original Hole

**Total**

Tubing Description	Run Date	String Length (ft)	Set Depth (ftKB)
Tubing - Production	6/22/2001	2,609.00	2,619.0

Item Des	Icon	Jts	OD (in)	Wt (lb/ft)	Grade	Len (ft)
Tubing		85	2 3/8	4.70	J-55	2609

Rod Description	Run Date	String Length (ft)	Set Depth (ftKB)

Other In Hole	Des	Icon	OD (in)	Top (ftKB)	Btm (ftKB)	Run Date	Pull Date

Description	Proposed/Actual Run	Type	Top Depth (ftKB)
Surface Casing Cement	Actual	Casing	10.0
Production Casing Cement	Actual	Casing	10.0