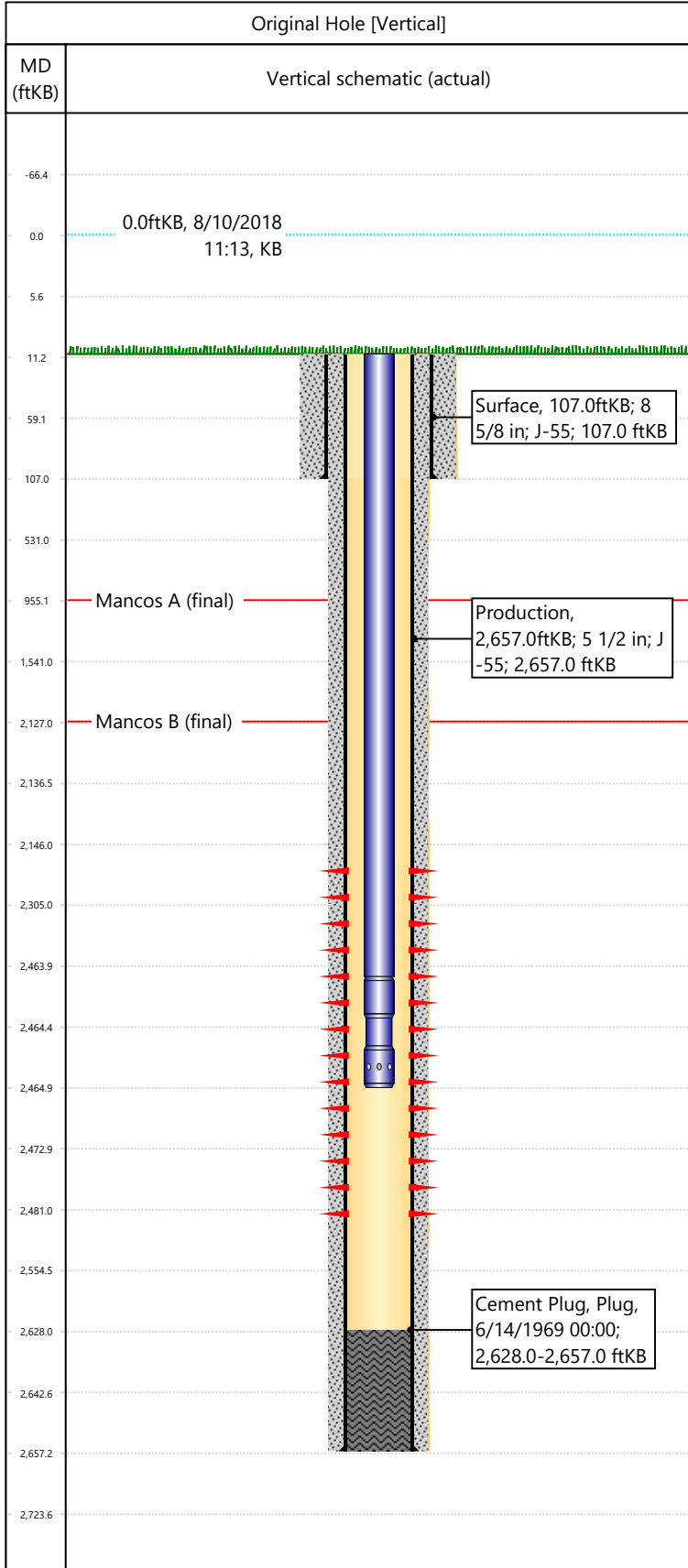


Well Name: DRAGON TRAIL UN 1039

API/UWI 05103072120000	Surface Legal Location SWSW-S24-T2S-R102W-6PM	Field Name Dragon Trail	License #	State/Province CO	Well Configuration Type Vertical
Original KB Elevation (ft) 6,387	KB-Tubing Head Distance (ft) 11	Spud Date 6/11/1969 00:00	Rig Release Date 6/15/1979 00:00	PBTD (All) (KB) Original Hole - 2,628.0	Total Depth All (TVD) (KB)



Hole Size

Section Description	Size (in)	Btm Depth (ftKB)
Surface	12 1/4	
Surface	12 1/4	107.0
Production	7 7/8	2,657.0

Formations

Formation Name	Final Top MD (ftKB)
Mancos A	955.0
Mancos B	2,127.0

Casing Strings

Csg Des	OD (in)	Wt/Len (lb/ft)	Grade	Set Depth (ftKB)
Surface	8 5/8	24.00	J-55	107.0
Production	5 1/2	14.00	J-55	2,657.0

Perforations

Date	Top (ftKB)	Btm (ftKB)	Linked Zone
7/1/1969	2146	2481	Mancos B, Original Hole

Total

Tubing Strings

Tubing Description	Run Date	String Length (ft)	Set Depth (ftKB)
Tubing - Production	5/4/2000	2,454.00	2,465.0

Item Des	Icon	Jts	OD (in)	Wt (lb/ft)	Grade	Len (ft)
Tubing		79	2 3/8	4.70	J-55	2453
Pump Seating Nipple		1	2 3/8	4.70	J-55	1

Rod Strings

Rod Description	Run Date	String Length (ft)	Set Depth (ftKB)

Other In Hole

Des	Icon	OD (in)	Top (ftKB)	Btm (ftKB)	Run Date	Pull Date

Cement

Description	Proposed/Actual Run	Type	Top Depth (ftKB)
Surface Casing Cement	Actual	Casing	11.0
Production Casing Cement	Actual	Casing	11.0
Cement Plug	Actual	Plug	2,628.0