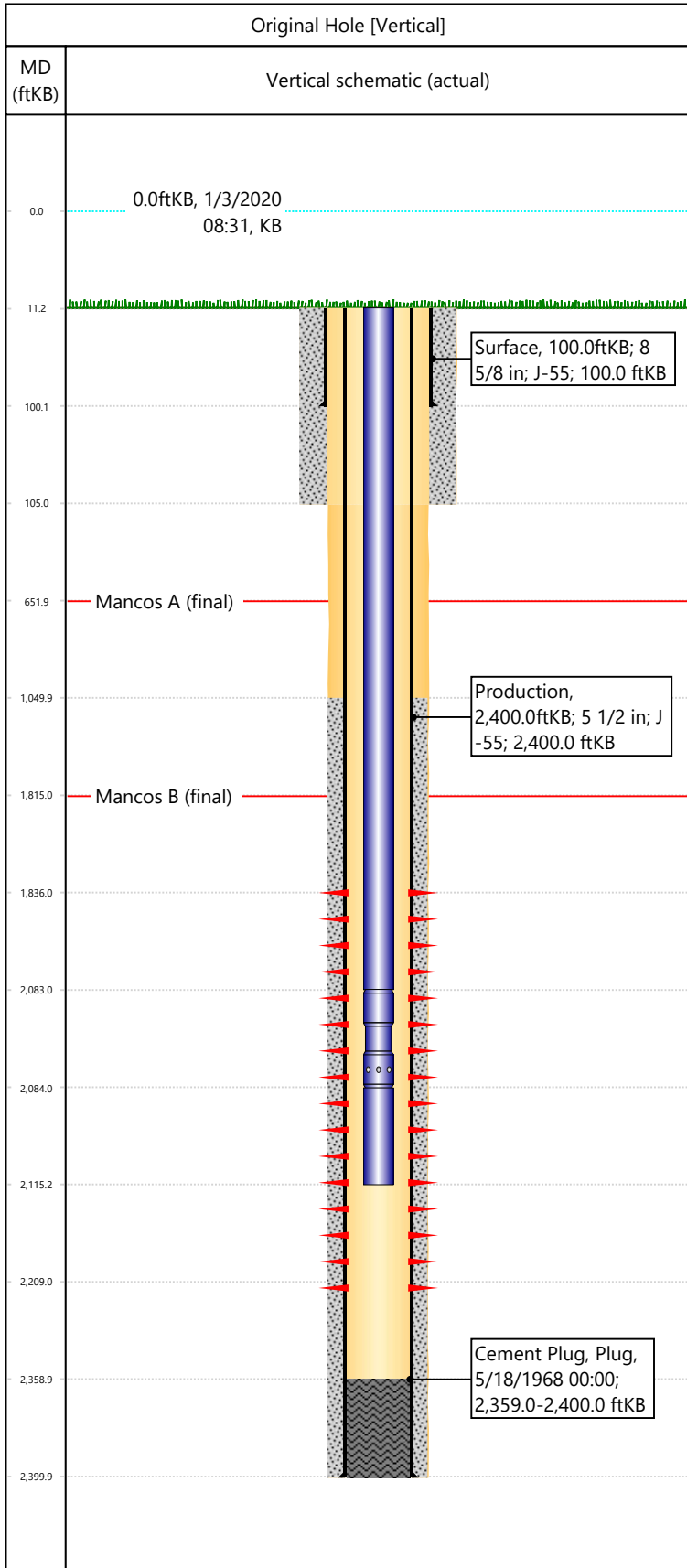


Well Name: DRAGON TRAIL UN 1028

API/UWI 05103071200000	Surface Legal Location SWNW-S31-T2S-R101W-6PM	Field Name Dragon Trail	License #	State/Province CO	Well Configuration Type Vertical
Original KB Elevation (ft) 6,366	KB-Tubing Head Distance (ft) 11	Spud Date 5/14/1968 00:00	Rig Release Date 5/18/1968 00:00	PBDT (All) (KB) Original Hole - 2,359.0	Total Depth All (TVD) (KB) Original Hole - 2,400.0



Section Description	Size (in)	Btm Depth (ftKB)
Surface	12 1/4	
Surface	12 1/4	105.0
Production	7 7/8	2,400.0

Formation Name	Final Top MD (ftKB)
Mancos A	652.0
Mancos B	1,815.0

Csg Des	OD (in)	Wt/Len (lb/ft)	Grade	Set Depth (ftKB)
Surface	8 5/8	24.00	J-55	100.0
Production	5 1/2	14.00	J-55	2,400.0

Date	Top (ftKB)	Btm (ftKB)	Linked Zone
5/20/1968	1836	2209	Mancos B, Original Hole

Item Des	Icon	Jts	OD (in)	Wt (lb/ft)	Grade	Len (ft)
Tubing		66	2 3/8	4.70	J-55	2072
Pump Seating Nipple		1	2 3/8	4.70	J-55	1
Tubing		1	2 3/8	4.70	J-55	31

Tubing Description	Run Date	String Length (ft)	Set Depth (ftKB)
Tubing - Production	5/17/2001	2,104.00	2,115.0

Rod Description	Run Date	String Length (ft)	Set Depth (ftKB)

Item Des	Icon	Jts	OD (in)	Wt (lb/ft)	Grade	Len (ft)

Des	Icon	OD (in)	Top (ftKB)	Btm (ftKB)	Run Date	Pull Date

Description	Proposed/Actual Run	Type	Top Depth (ftKB)
Surface Casing Cement	Actual	Casing	11.0
Production Casing Cement	Actual	Casing	1,050.0
Cement Plug	Actual	Plug	2,359.0