



FORM F-106



RECEIVED

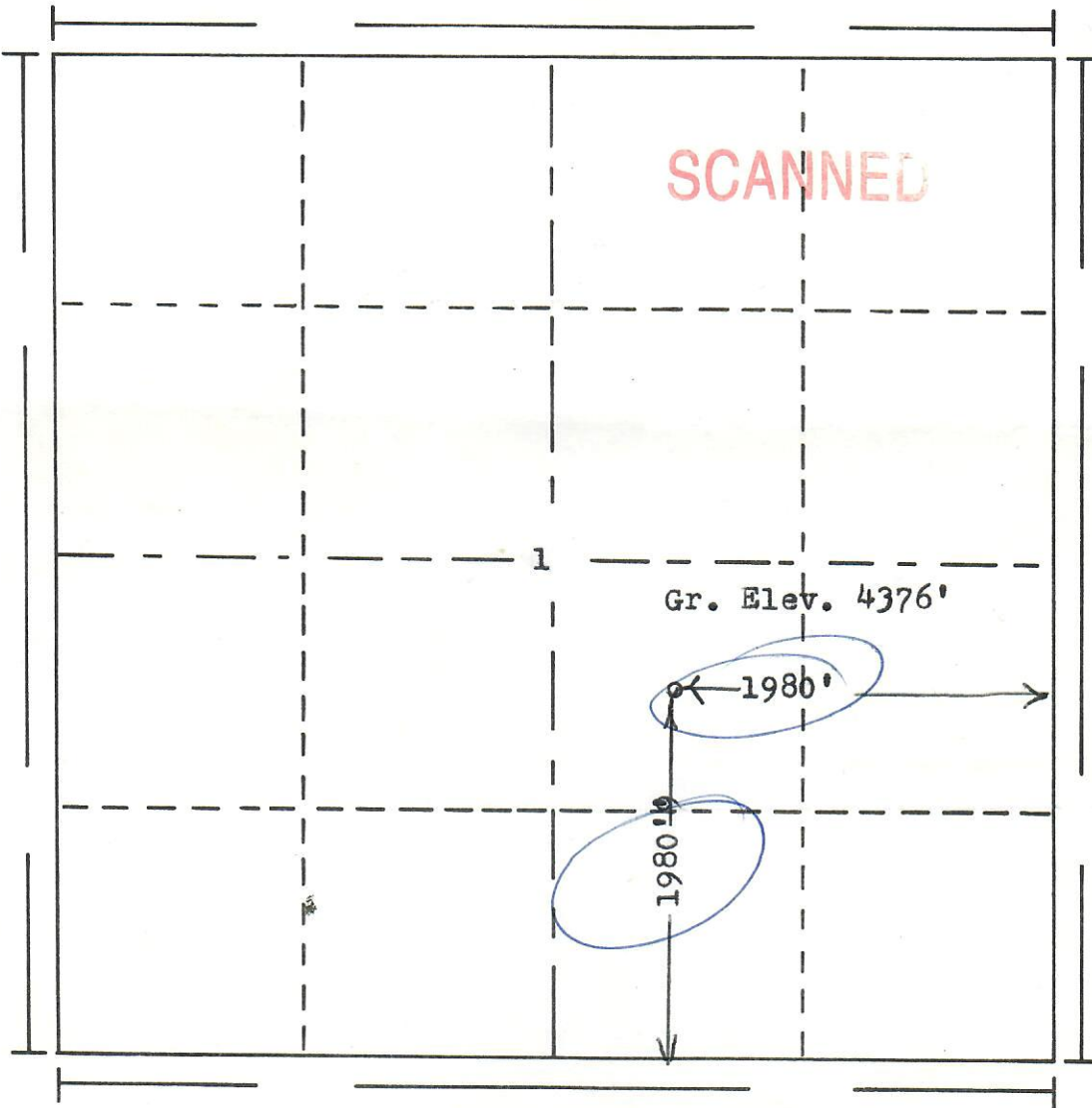
JAN 08 1983

COLO. OFF. OF STATE & COUNTY RECORDS

R. 58W

N

SCANNED



T.
2
N

Scale... 1" = 1000'

Powers Elevation of Denver, Colorado
 has in accordance with a request from Mr. Pack
 for Rock Oil Corp.
 determined the location of **No. 1 Bear Creek**
 to be CNW SE Section 1 Township 2N
 Range 58W of the 6th Principal Meridian
 Morgan County, Colorado



I hereby certify that this plat is an
 accurate representation of a correct
 survey showing the location of

Date: 12-11-82

Billy B. Holloway
 Licensed Land Surveyor No. 2853
 State of Colorado