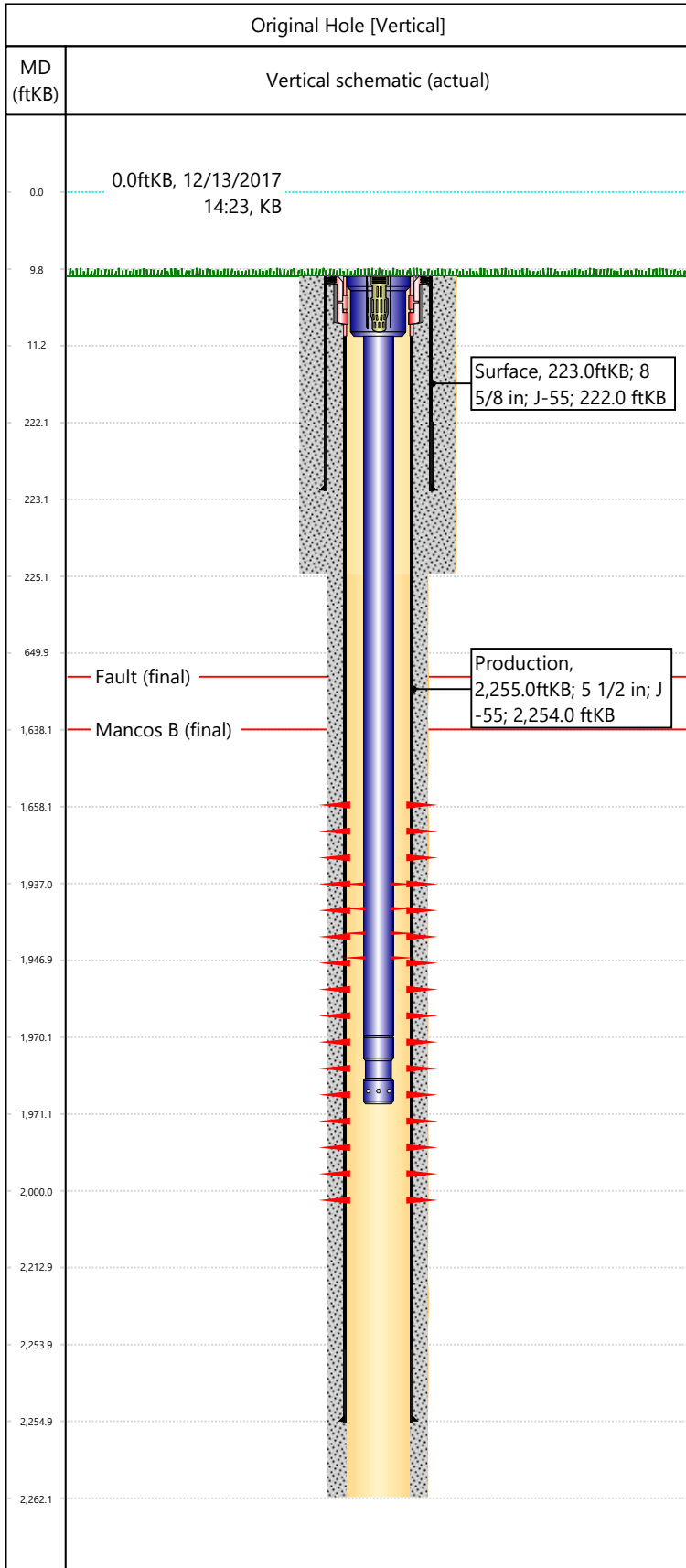


Well Name: DOUGLAS CK UN 40

API/UWI 05103093180000	Surface Legal Location NWSE-S5-T3S-R101W-6PM	Field Name Douglas Creek Unit	License #	State/Province CO	Well Configuration Type Vertical
Original KB Elevation (ft) 6,340	KB-Tubing Head Distance (ft) 10	Spud Date 6/28/1988 00:00	Rig Release Date 6/30/1988 00:00	PBTD (All) (KB) Original Hole - 2,208.0	Total Depth All (TVD) (KB) Original Hole - 2,262.0



Section Description	Size (in)	Btm Depth (ftKB)
Surface	12 1/4	
Surface	12 1/4	225.0
Production	7 7/8	2,262.0

Formation Name	Final Top MD (ftKB)
Fault	970.0
Mancos A	
Mancos B	1,638.0

Csg Des	OD (in)	Wt/Len (lb/ft)	Grade	Set Depth (ftKB)
Surface	8 5/8	24.00	J-55	223.0
Production	5 1/2	15.50	J-55	2,255.0

Date	Top (ftKB)	Btm (ftKB)	Linked Zone
7/29/1988	1658	2000	Mancos B, Original Hole
7/28/2014	1937	1947	Mancos B, Original Hole

**Total**

Tubing Description	Run Date	String Length (ft)	Set Depth (ftKB)
Tubing - Production	4/13/2000	1,961.00	1,971.0

Item Des	Icon	Jts	OD (in)	Wt (lb/ft)	Grade	Len (ft)
Tubing Hanger		1	4.95	4.70	J-55	1
Tubing		65	2 3/8	4.70	J-55	1959
Pump Seating Nipple		1	2 3/8	4.70	J-55	1

Rod Description	Run Date	String Length (ft)	Set Depth (ftKB)

Item Des	Icon	Jts	OD (in)	Wt (lb/ft)	Grade	Len (ft)

Des	Icon	OD (in)	Top (ftKB)	Btm (ftKB)	Run Date	Pull Date

Description	Proposed/Actual Run	Type	Top Depth (ftKB)
Surface Casing Cement	Actual	Casing	10.0
Production Casing Cement	Actual	Casing	10.0