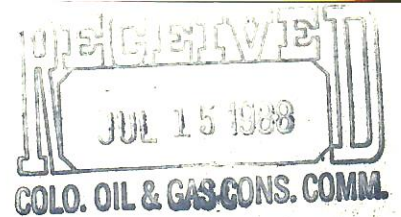
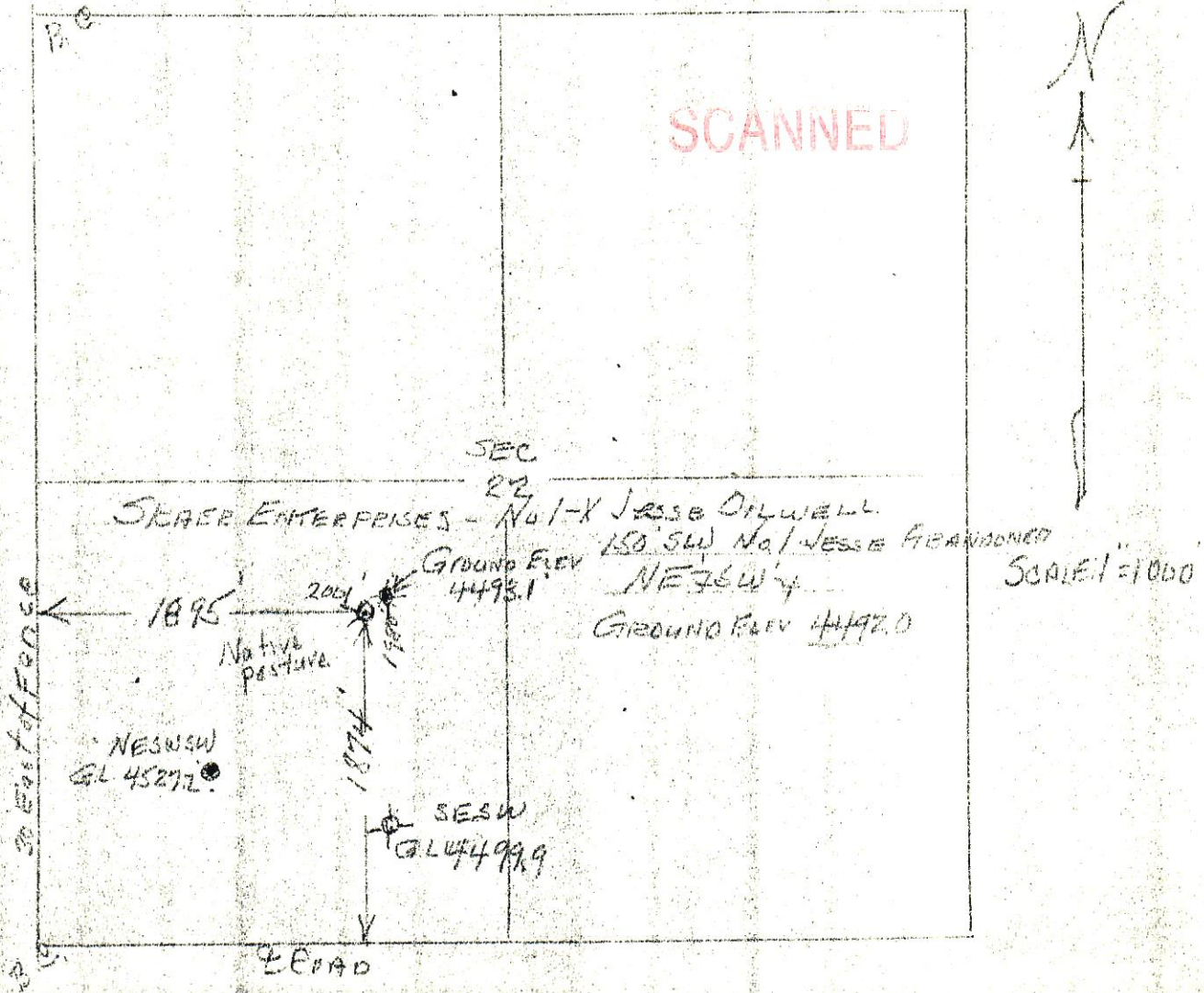




00085321



T2N R54W 6PM



I hereby certify that the above plat is an accurate representation of a correct survey showing the location of Skaer Enterprises-No.1-X Jesse Oilwell in NE 1/4 SW 1/4 Sec. 22 T2N R54W 6PM. The elevation of the ground at the stake is 4492.0' from U.S.G.S. Bench Mark.

Fort Morgan, Colorado
June 1, 1988

Bevil Osborne
Registered Professional Engineer
State of Colorado