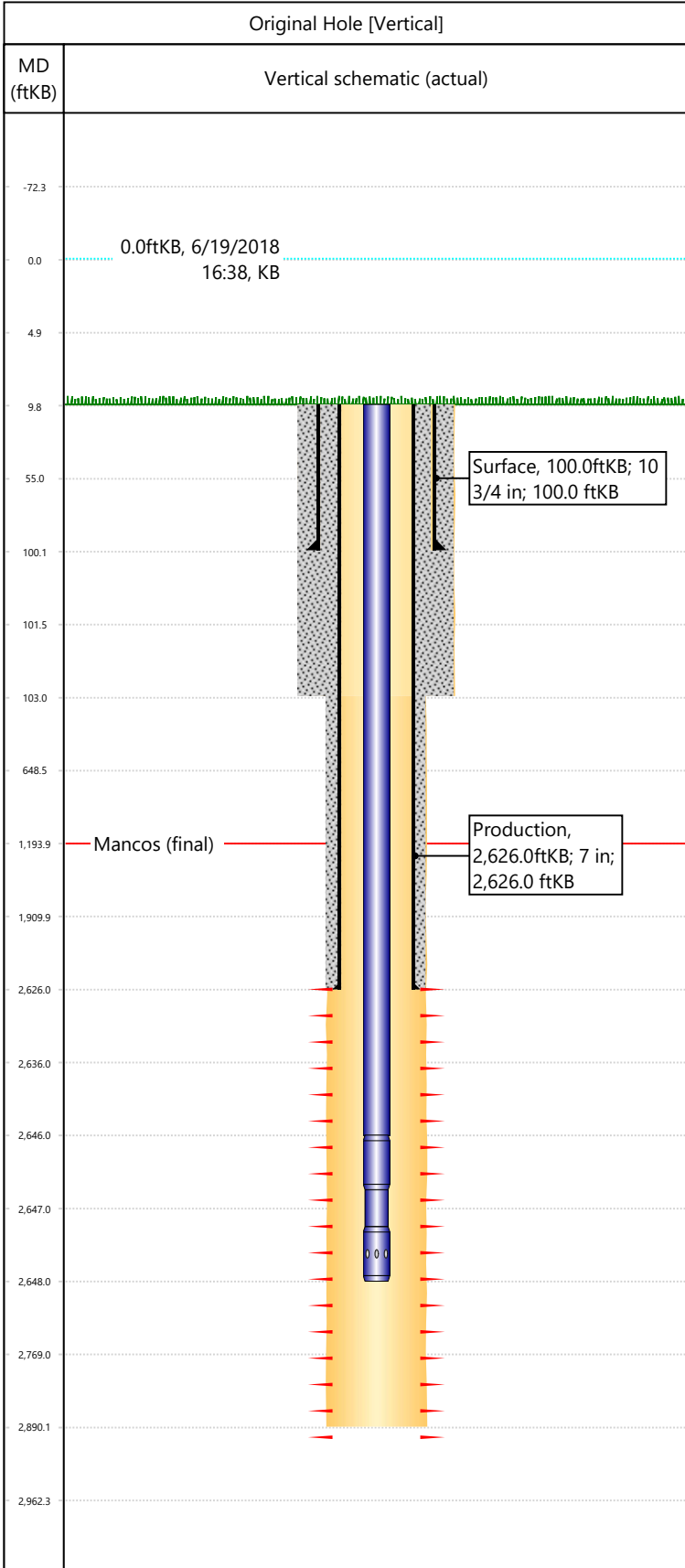


Well Name: LWR HORSE DRAW UN 2215

API/UWI 05103072910000	Surface Legal Location SWNE-S34-T2S-R103W-6PM	Field Name Lower Horse Draw Field	License #	State/Province CO	Well Configuration Type Vertical
Original KB Elevation (ft) 6,635	KB-Tubing Head Distance (ft) 10	Spud Date 7/8/1970 00:00	Rig Release Date 7/14/1970 00:00	PBDT (All) (KB) Original Hole - 2,890.0	Total Depth All (TVD) (KB) Original Hole - 2,890.0



Hole Size		
Section Description Surface	Size (in) 14	Btm Depth (ftKB)
Section Description Surface	Size (in) 14	Btm Depth (ftKB) 103.0
Section Description Production	Size (in) 8 3/4	Btm Depth (ftKB) 2,890.0

Formations	
Formation Name Mancos	Final Top MD (ftKB) 1,194.0

Casing Strings				
Csg Des	OD (in)	Wt/Len (lb/ft)	Grade	Set Depth (ftKB)
Surface	10 3/4			100.0
Production	7			2,626.0

Perforations			
Date	Top (ftKB)	Btm (ftKB)	Linked Zone
7/14/1970	2626	2890	Mancos, Original Hole

Total

Tubing Strings						
Tubing Description	Run Date	String Length (ft)	Set Depth (ftKB)			
Tubing - Production	8/20/2018	2,638.00	2,648.0			
Item Des	Icon	Jts	OD (in)	Wt (lb/ft)	Grade	Len (ft)
Tubing		85	2 3/8	4.70	J-55	2636
Pump Seating Nipple		1	2 3/8	4.70	J-55	2

Rod Strings						
Rod Description	Run Date	String Length (ft)	Set Depth (ftKB)			
Item Des	Icon	Jts	OD (in)	Wt (lb/ft)	Grade	Len (ft)

Other In Hole						
Des	Icon	OD (in)	Top (ftKB)	Btm (ftKB)	Run Date	Pull Date

Cement			
Description	Proposed/Actual Run	Type	Top Depth (ftKB)
Surface Casing Cement	Actual	Casing	10.0
Production Casing Cement	Actual	Casing	10.0