

Remediation Project# 39333



Rhoades Unit (RU) 5-4 - Sample RU54 2a (at Wellhead)
(38.878520°, -102.798360°)

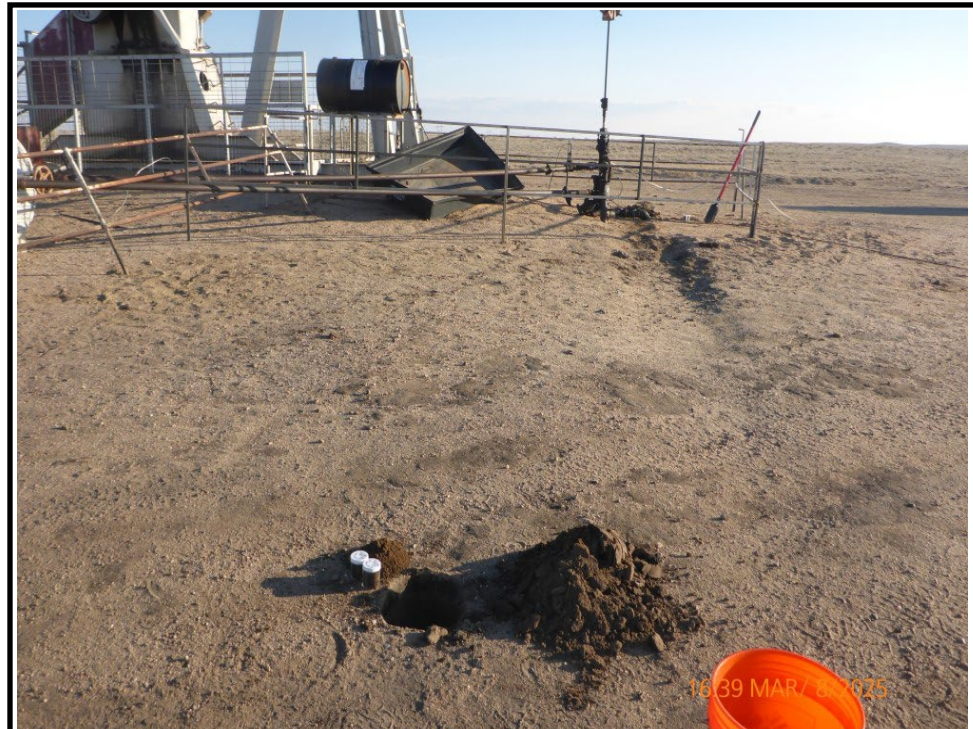


Rhoades Unit (RU) 5-4 - Sample RU54 1a (~30' West of well head)
(38.87851°, -102.79846°)

Remediation Project# 39333



Rhoades Unit (RU) 5-4 - Sample RU54 1a (~30' West of well head)



Rhoades Unit (RU) 5-4 - Sample RU54 4a (~30' North of well head)
(38.878600°,-120.798354°)

Remediation Project# 39333



Rhoades Unit (RU) 5-4 - Sample RU54 4a (~30' North of well head)



Rhoades Unit (RU) 5-4 - Sample RU54 3a (~30' South of well head)
(38.878432°, -120.798363°)

Remediation Project# 39333



Rhoades Unit (RU) 5-4 – Looking North from Sample RU54 3a
towards Sample RU54 2a



Rhoades Unit (RU) 5-4 – Sample 2a Locations 06/11/2025
(2C-a,2N-a,2S-a,2E-a,2W-a)

Remediation Project# 39333



Rhoades Unit (RU) 5-4 – Sample 3a Locations 06/11/2025
(3C-a,3N-a,3S-a,3E-a,3W-a)



Rhoades Unit (RU) 5-4 – Background Sample Location 06/11/2025
(BGD-1, BGD-2)

Remediation Project# 39333



Rhoades Unit (RU) 5-4 – Sample BGD-1 (12" bgs)
(38.878267°, -102.798393°)



Rhoades Unit (RU) 5-4 – Sample BGD-2 (36" bgs)
(38.878267°, -102.798393°)

Remediation Project# 39333



Rhoades Unit (RU) 5-4 – Sample 3a Locations, looking South
(3C-a,3N-a,3S-a,3E-a,3W-a)



Rhoades Unit (RU) 5-4 - Sample 3a-C (38.878432°, -120.798363°)

Remediation Project# 39333



Rhoades Unit (RU) 5-4 – Sample 2b Locations 07/29/2025
(2C-b,2N-b,2S-b,2E-b,2W-b)



Rhoades Unit (RU) 5-4 – Sample 2E-b Location
(07/29/2025)

Remediation Project# 39333



Rhoades Unit (RU) 5-4 – Sample 2E-b Location
(Close to the lateral extent to the East)



Rhoades Unit (RU) 5-4 – Sample 2W-b Location
(Lateral Extent to the West)

Remediation Project# 39333



Rhoades Unit (RU) 5-4 – Sample 2S-b Location
(Lateral Extent to the South)



Rhoades Unit (RU) 5-4 – Sample 2N-b Location
(Lateral Extent to the North)

Remediation Project# 39333



Rhoades Unit (RU) 5-4 – Sample 2C-b Location
(Vertical Extent Center)



Rhoades Unit (RU) 5-4 – Sample L1
(hard and black appearing soil)
07/29/2025