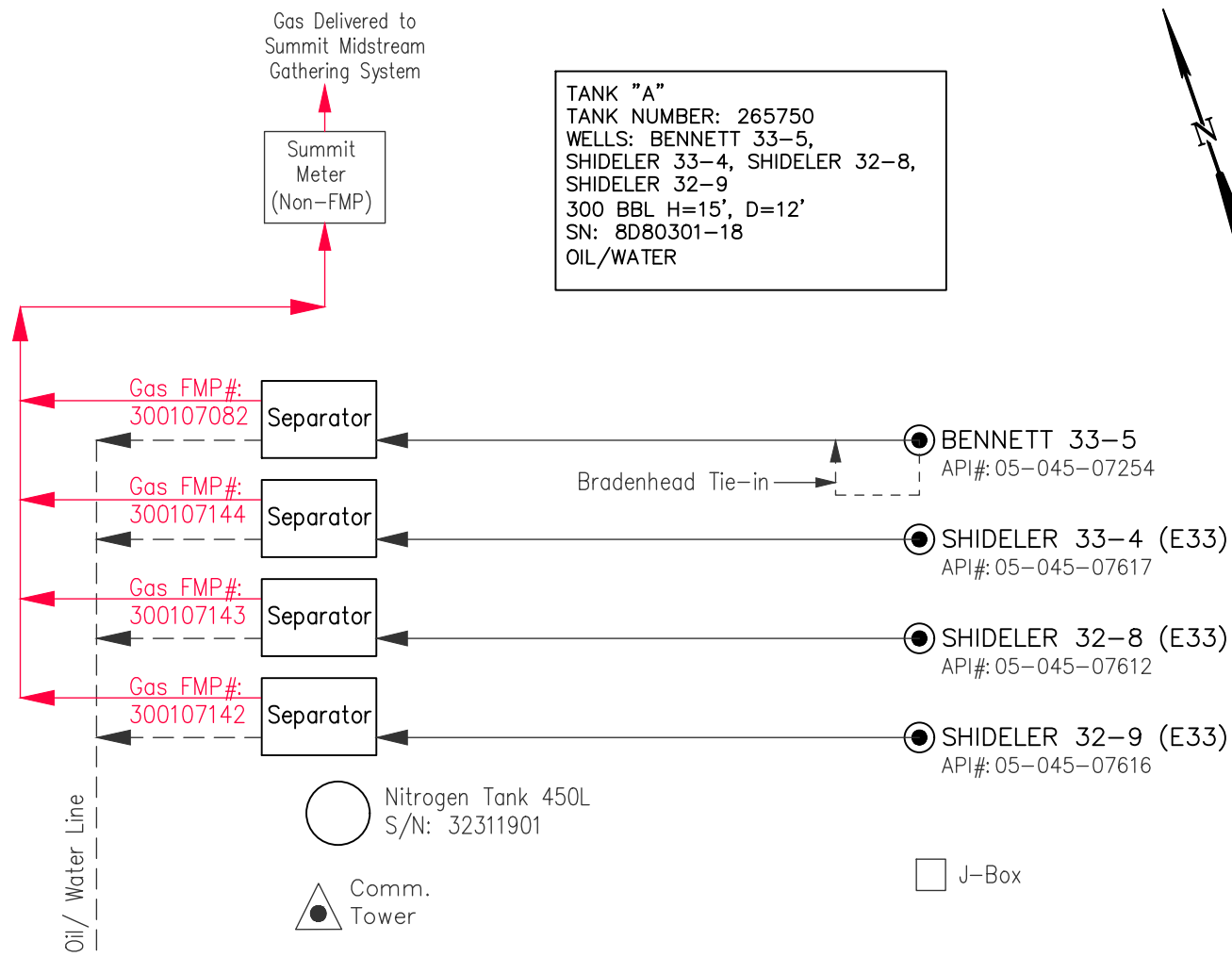
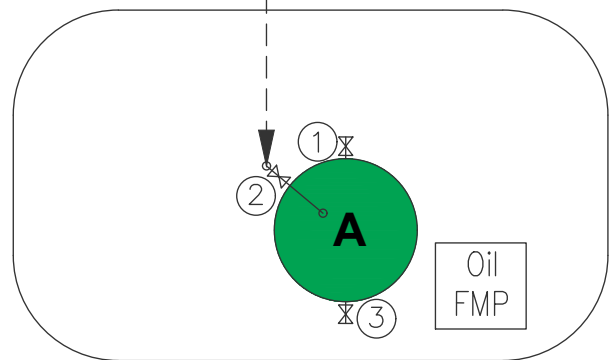


TANK "A"  
 TANK NUMBER: 265750  
 WELLS: BENNETT 33-5,  
 SHIDELER 33-4, SHIDELER 32-8,  
 SHIDELER 32-9  
 300 BBL H=15', D=12'  
 SN: 8D80301-18  
 OIL/WATER



**VALVE POSITION LEGEND**

VALVE #	VALVE TYPE	PRODUCTION PHASE	SALES PHASE	DRAIN PHASE
1	SALES	CLOSED & SEALED	OPEN	CLOSED & SEALED
2	FILL	OPEN	CLOSED & SEALED	CLOSED & SEALED
3	DRAIN	CLOSED & SEALED	CLOSED & SEALED	OPEN



**QB Energy**

REVISIONS

COC: 56608A  
 Site Security  
**E33 Well Pad**  
 SW1/4 NW1/4, Section 33, T7S, R92W, 6th P.M.  
 GARFIELD COUNTY, COLORADO  
 LAT: 39.484210 LONG: -107.678570

DATE: 7/25/25	PROJECT NO.: 25-13-20
SCALE: NO SCALE	DATE of SURVEY: N/A

NOTE:  
 THIS SKETCH WAS PREPARED  
 FROM INFORMATION PROVIDED  
 BY QB ENERGY.



906 Main Street  
 Evanston, Wyoming 82930  
 Phone No. (307) 789-4545