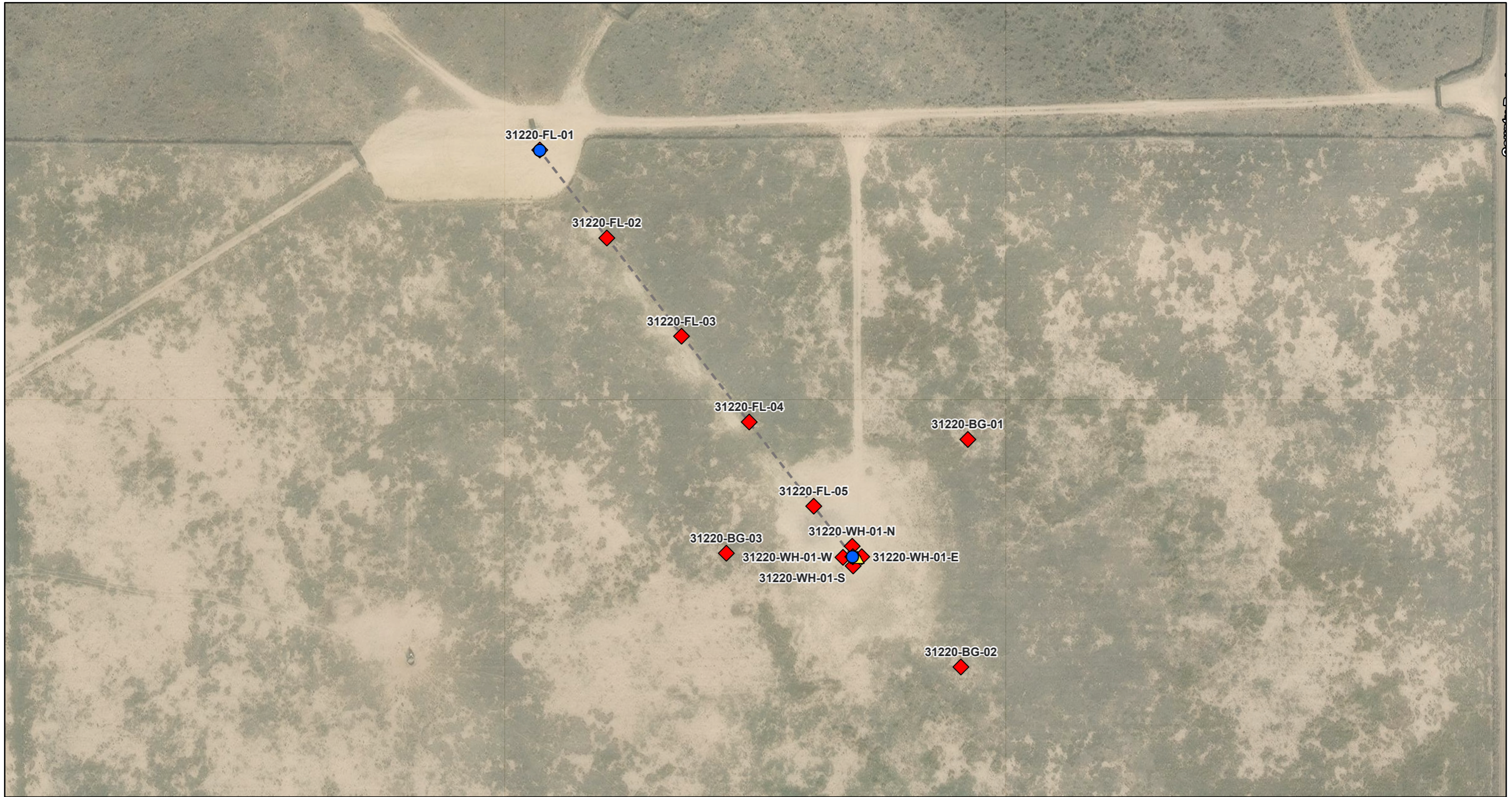


# REM 31220 Proposed Soil Sample Map



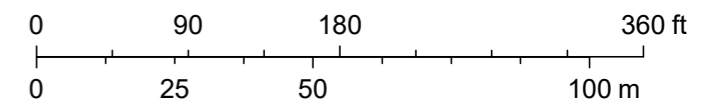
7/24/2025, 10:28:28 AM

- Remediation (ECMC Form 27)
- Remediation Tracking (Editable)
- ▲ Out of Compliance Within 20 Days
- Sample Location (Editable)
- ◆ Proposed Location

- Production Line (Editable)
- Confirmed by Desktop Review (Removed)
- World Imagery
- Low Resolution 15m Imagery

- High Resolution 60cm Imagery
- High Resolution 30cm Imagery
- Citations
- 30cm Resolution Metadata

1:1,367



Sources: Esri, TomTom, Garmin, FAO, NOAA, USGS, © OpenStreetMap contributors, and the GIS User Community, Maxar