

Date: 7/30/2025
 Preparer: CG
 Revised

Wellname: **SECU 1203**
 Field: Campo
 County: Baca State: CO
 aka: Comanche Federal C #3
 API: 05-009-06502

QTR: NESE
 Sec: 1
 Twp: 35S
 Rge: 46W

KB: 4148
 GL: 4136
 Diff: 12

Casing Information

Size	Weight	Grade	Depth	Cement	Date Cmt'd	Comment
8 5/8	24	K55	1797	675	4/5/1992	Circ 190 sx to pit
5 1/2	14	K55	4249	250	4/10/1992	circ 10 sx to pit
DV tool			3120	300	4/10/1992	Circ 25 sx to pit

Producing Intervals

Formation	Top	Btm	SPF	# of holes	Date Shot	Status
Lansing D	3991	4000	4	36	5/14/1992	CIBP
Lansing C	3913	3930	4	68	5/16/1992	open

Well History

4/5/1992	Cmt surf w/ 550 sks 65/35 pozmix (12.3 ppg, 2.06 cft/sk) & 125 sks Class C (14.8 ppg, 1.32 cft/sk); circ 190 sks to pit					
4/10/1992	Cmt prod csg 1st stage w/ 250 sks 50/50 pozmix (14.6 ppg, 1.24 cft/sk) & 2nd stage w/ 300 sks 65/35 pozmix cmt (12.2 ppg, 2.1 cft/sk); circ cmt to surf					
5/16/1992	Set CIBP @ 3985, dump 1 sk cmt; perf Lansing C 3913-3930 w/ 4 spf; swab					
1995->1998	Convert to ESP					
5/3/21	MIT . Pressure up to 400Psi for 30 min. held. Recorded pressure for COGCC					

Plugging Procedure

This well is NOT on federal lease. Follow ECMC guidelines

Cement Specs:

- Cement to be used: **Class H** Cement

Water Req	Slurry Weight	Slurry Vol.
4.3 gal/sx	16.4 lb/gal	1.06 cu ft/sx

Step

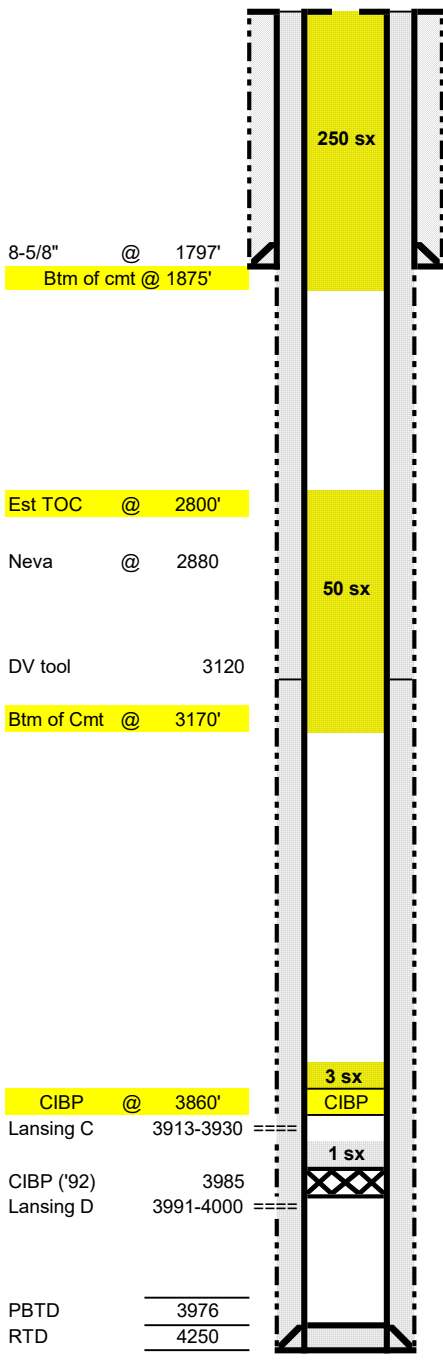
- Set CIBP @ 3860' with 3 sx cement.
- Pump spacer
- With tubing at 3170'. **Pump 50 sx Class H cement**
- Wait 4 hrs and tag plug. Tag must be 2830' or shallower.
- Pump spacer
- With tubing @ 1875'. **Pump 250 sx casing plug Class H cement.** Cement to surface
- Top off as needed

Cut & Cap

- Metal plate at least 1/4" thick welded in place, needs to have the following information
 Murfin Drilling Company
 SECU 1203 Sec. 1-35S-46W
 05-009-06502

Contacts

Murfin Engineer
 Cristina Goodrich, Cell: 316-210-4832, cgoodrich@murfininc.com
ECMC Contact
 Brian Welsh (719) 325-6919, brian.welsh@state.co.us



8-5/8" @ 1797'
 Btm of cmt @ 1875'

Est TOC @ 2800'

Neva @ 2880'

DV tool 3120'

Btm of Cmt @ 3170'

CIBP @ 3860'

Lansing C 3913-3930

CIBP ('92) 3985

Lansing D 3991-4000

PBTD 3976

RTD 4250