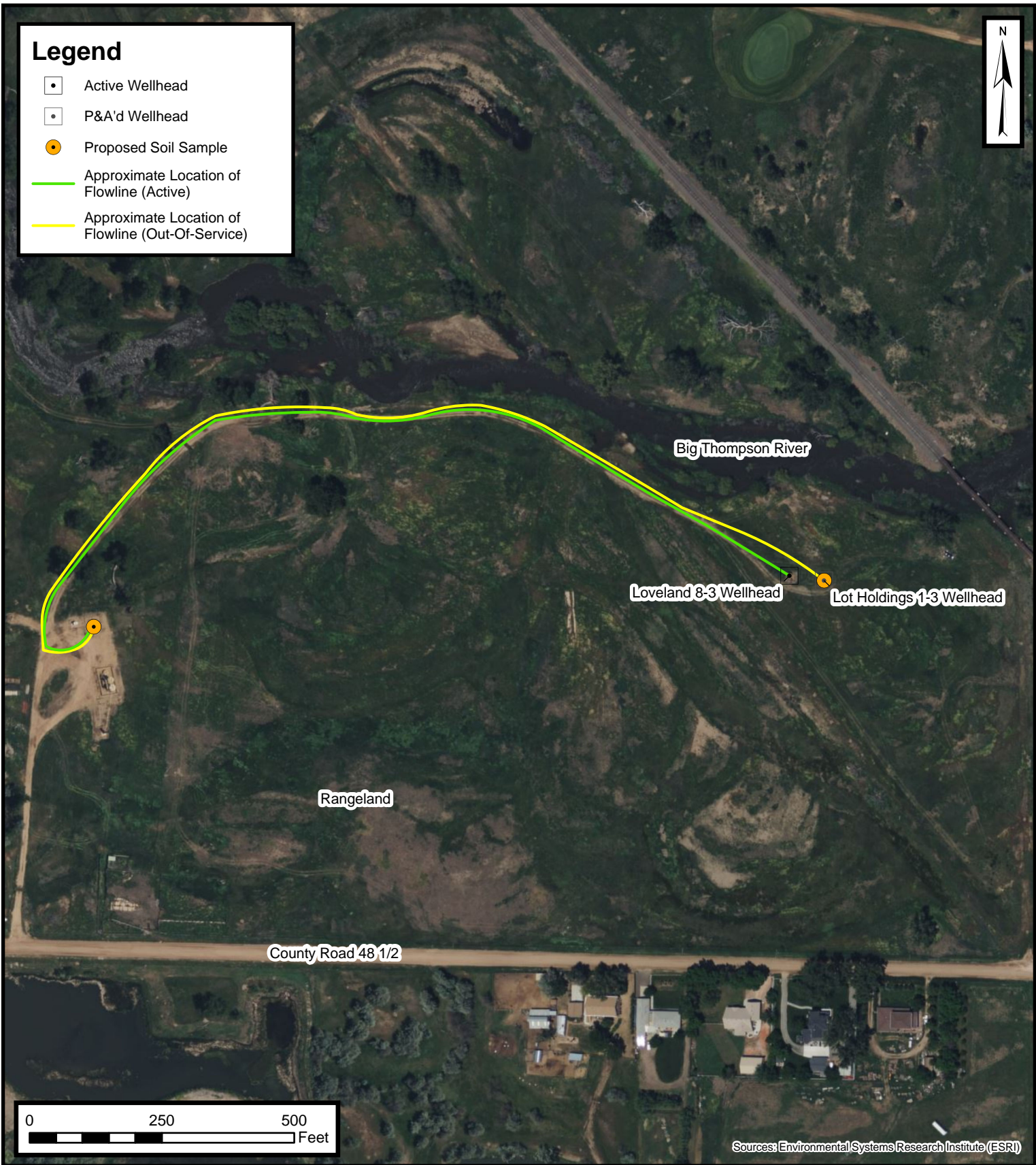


Legend

- Active Wellhead
- ◻ P&A'd Wellhead
- Proposed Soil Sample
- Approximate Location of Flowline (Active)
- Approximate Location of Flowline (Out-Of-Service)



Default Folder: C:\Users\Margan Tai\OneDrive - ENSOLUM, LLC\Ensolium GIS\0 - Projects\Kerr-McGee Oil & Gas Onshore, LP\09A14171459 - Lot Holdings 1-3 Wellhead



Proposed Flowline Excavation and Soil Sampling Locations Map

Lot Holdings 1-3 Flowline
Kerr-McGee Oil & Gas Onshore, LP
SENE SEC 3-T4N-R67W
Weld County, CO

Project Number: 09A14171459

FIGURE

3