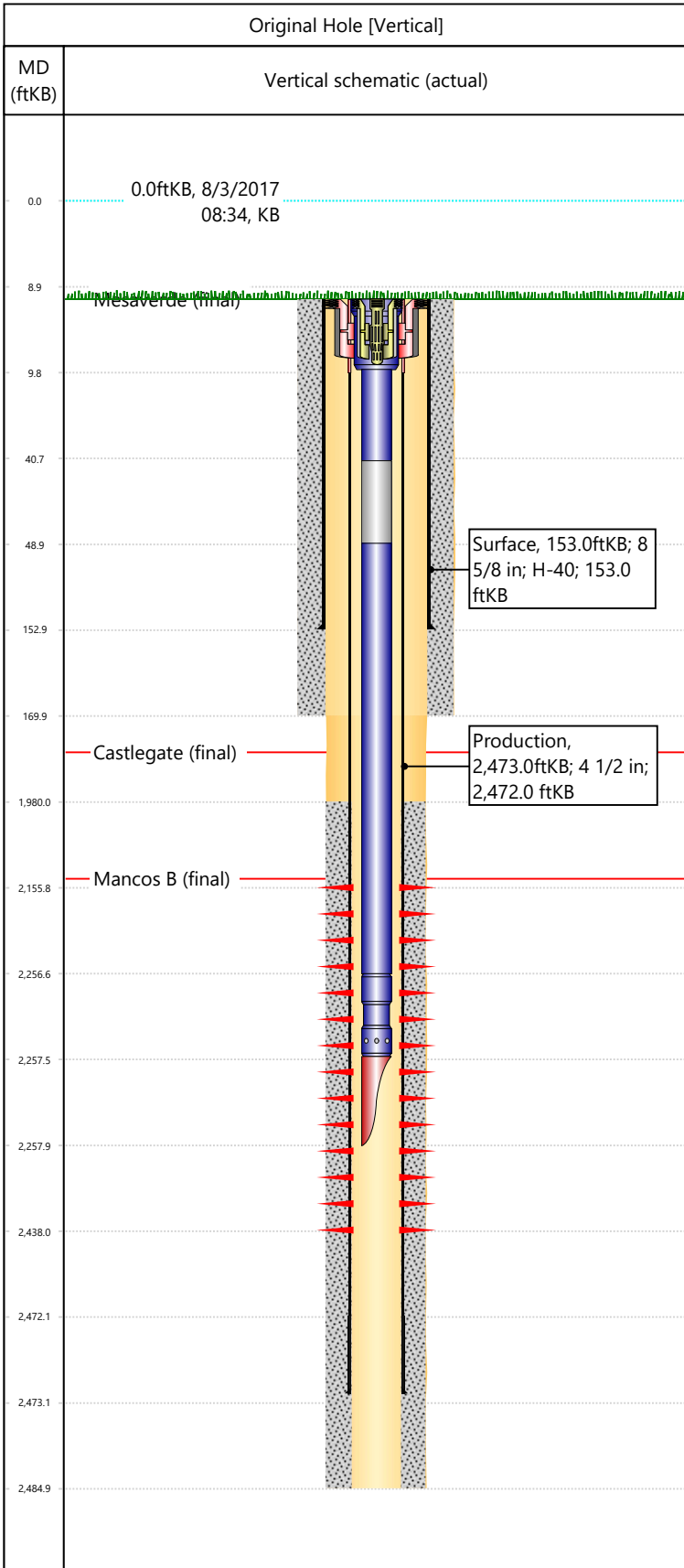


Well Name: CATHEDRAL FEDERAL 22-01

API/UWI 05103077460000	Surface Legal Location SESE-S22-T2S-R101W-6PM	Field Name Cathedral	License #	State/Province CO	Well Configuration Type Vertical
Original KB Elevation (ft) 6,071	KB-Tubing Head Distance (ft) 9	Spud Date 10/30/1975 00:00	Rig Release Date 11/4/1975 00:00	PBDT (All) (KB) Original Hole - 2,457.0	Total Depth All (TVD) (KB) Original Hole - 2,485.0



Casing Strings				
Csg Des	OD (in)	Wt/Len (lb/ft)	Grade	Set Depth (ftKB)
Surface	8 5/8	24.00	H-40	153.0
Production	4 1/2	10.50		2,473.0

Formations	
Formation Name Mesaverde	Final Top MD (ftKB) 9.0
Formation Name Castlegate	Final Top MD (ftKB) 940.0
Formation Name Mancos B	Final Top MD (ftKB) 2,140.0

Perforations			
Date	Top (ftKB)	Btm (ftKB)	Linked Zone
11/11/1975	2156	2438	Emerg, Original Hole

Tubing Strings			
Tubing Description	Run Date	String Length (ft)	Set Depth (ftKB)
Tubing - Production 2-3/8" YB	10/17/2017	2,249.00	2,258.0

Item Des	Icon	Jts	OD (in)	Wt (lb/ft)	Grade	Len (ft)
Tubing Hanger TC-1A		1	4	4.70	J-55	0.8
Tubing 2-3/8" YB		1	2 3/8	4.70	J-55	31
Tubing Pup Joint 2-3/8" NEW		1	2 3/8	4.70	J-55	8
Tubing 2-3/8" YB		70	2 3/8	4.70	J-55	2207.6
Seating Nipple		1	2 3/8	4.70	J-55	1.1
Mule Shoe COLLAR		1	2 3/8	4.70	J-55	0.5

Rod Strings			
Rod Description	Run Date	String Length (ft)	Set Depth (ftKB)

Item Des	Icon	Jts	OD (in)	Wt (lb/ft)	Grade	Len (ft)

Other In Hole						
Des	Icon	OD (in)	Top (ftKB)	Btm (ftKB)	Run Date	Pull Date

Cement			
Description Surface Casing Cement	Proposed/Actual Run Actual	Type Casing	Top Depth (ftKB) 9.0
Description Production Casing Cement	Proposed/Actual Run Actual	Type Casing	Top Depth (ftKB) 1,980.0