

WELL NAME: SPIRIT MOUNTAIN 32-28, API #: 071-08382, INSP. # 716301284



PHOTO 1: WELL SIGN



PHOTO 2: LOCATION.



PHOTO 3: WELLHEAD AND EQUIPMENT.



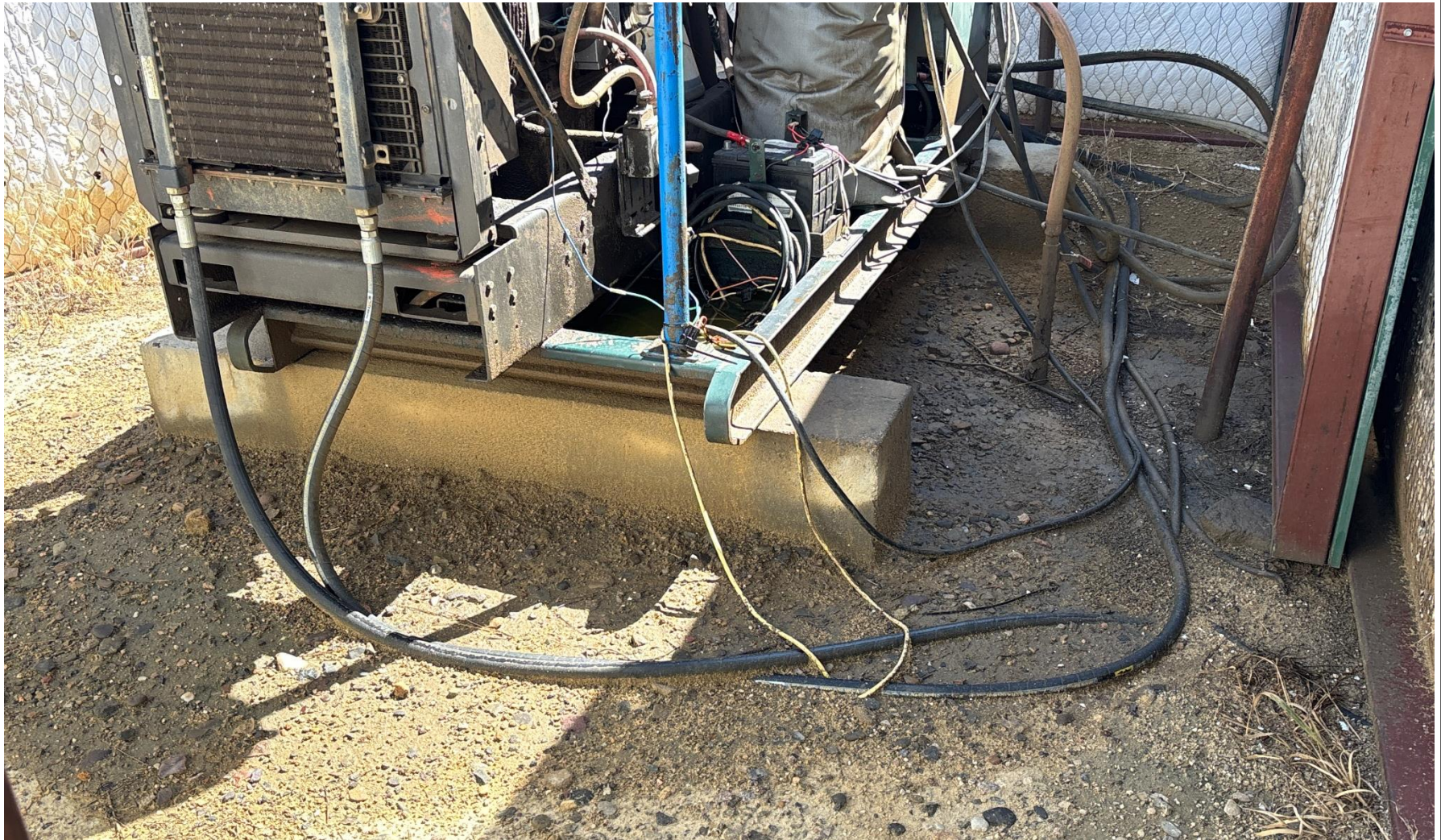


PHOTO 4: AREA OF IMPACTED SOIL AROUND PRIME MOVER SKID. Conduct maintenance on equipment, cleanup stained material and review self inspection processes. COMPLY WITH RULE 1002,(2).D.





PHOTO 5: OILY WASTE AND APPEARS THERE MAY BE ANTIFREEZE IN PRIME MOVER SKID. DRAIN OILY WASTE REPAIR ALL LEAKS AND REMOVE IMPACTED SOIL PER RULE 1002..(2).D & 1002.f.(2)B, Comply with general provisions of the oil and gas act for wildlife protection AND SB-181.

