

SITE ASSESSMENT REPORT
MDM 33-14 FLOWLINE
ECMC REMEDIATION # 32449

Prepared for:



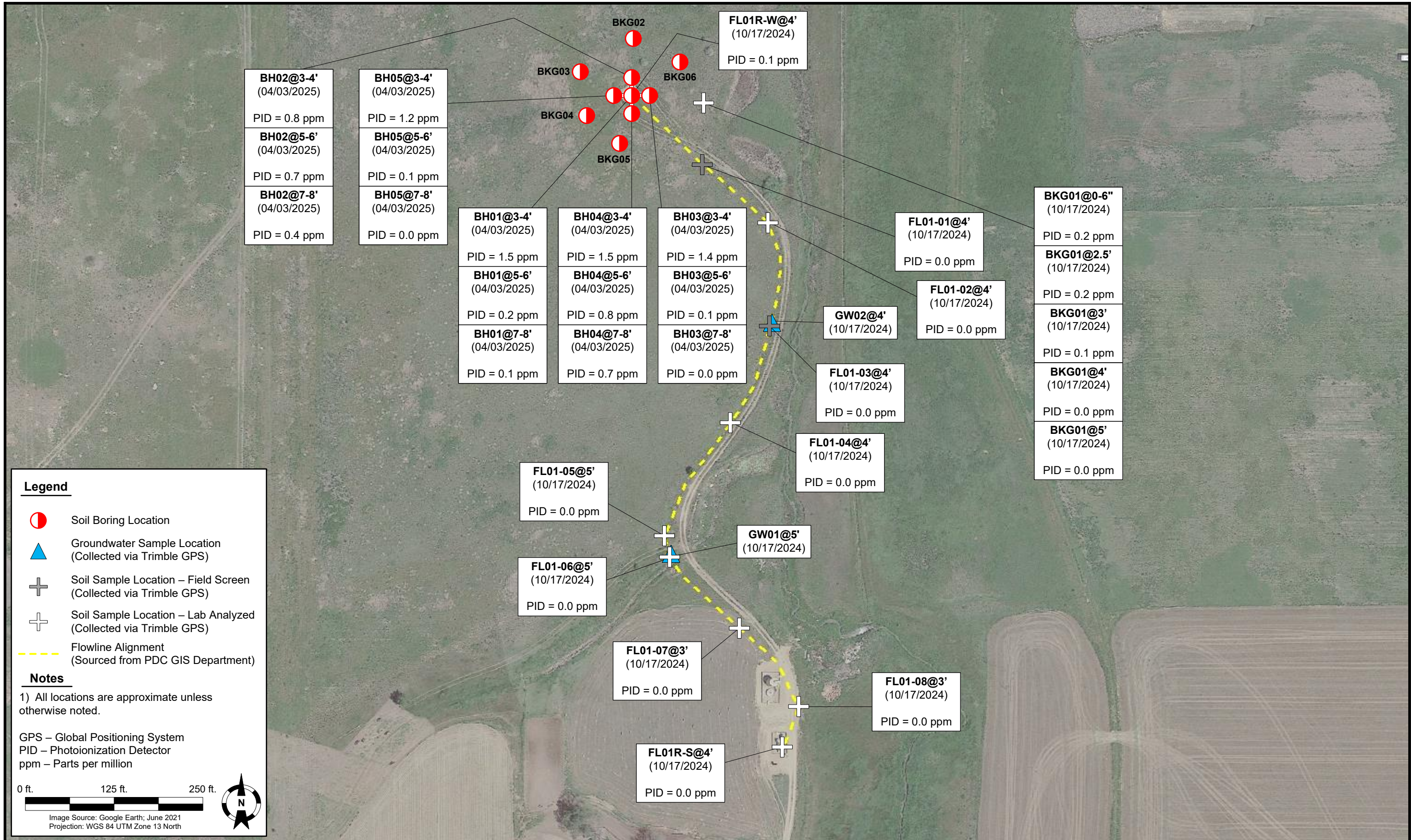
PDC ENERGY

1099 18th Street
Suite 1500
Denver, CO 80202

Prepared by:



4725 Independence Street
Wheat Ridge, CO 80033



DATE: July 14, 2025

DESIGNED BY: B. Nelson

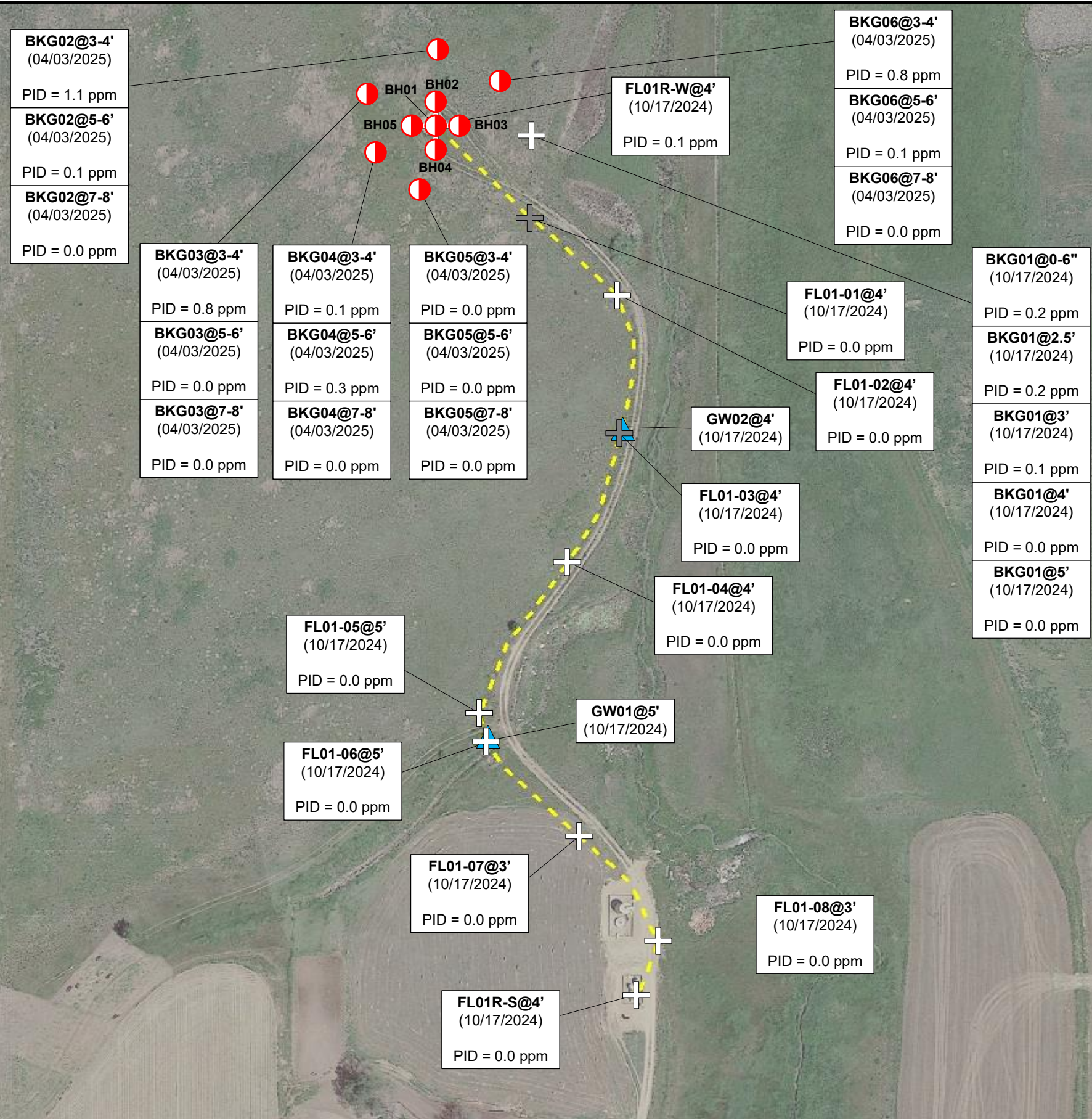
DRAWN BY: L. Buck



PDC Energy, Inc. – 69175 – DJ Basin
MDM 33-14 Flowline
 NWSE, Section 14, Township 2 North, Range 68 West
 Weld County, Colorado

Site Investigation
 Soil Boring Location Map
 (10/17/2024 & 04/03/2025)

Figure
 1



Legend

- Soil Boring Location
- Groundwater Sample Location (Collected via Trimble GPS)
- Soil Sample Location – Field Screen (Collected via Trimble GPS)
- Soil Sample Location – Lab Analyzed (Collected via Trimble GPS)
- Flowline Alignment (Sourced from PDC GIS Department)

Notes

1) All locations are approximate unless otherwise noted.

GPS – Global Positioning System
 PID – Photoionization Detector
 ppm – Parts per million

0 ft. 125 ft. 250 ft.

Image Source: Google Earth; June 2021
 Projection: WGS 84 UTM Zone 13 North

DATE:	July 14, 2025
DESIGNED BY:	B. Nelson
DRAWN BY:	L. Buck

Tasman, Inc.
 4725 Independence Street
 Wheat Ridge, CO 80033

PDC Energy, Inc. – 69175 – DJ Basin
MDM 33-14 Flowline
 NWSE, Section 14, Township 2 North, Range 68 West
 Weld County, Colorado

Site Investigation
 Soil Boring Location Map
 - Backgrounds
 (10/17/2024 & 04/03/2025)

Figure
 2

TABLE 1
FIELD DATA SUMMARY TABLE
PDC ENERGY, INC. - 69175
MDM 33-14 FLOWLINE, WELD COUNTY, COLORADO
REM # 32449



Sample ID	Sample Date	Depth (ft. bgs)	GPS Data ¹ Latitude/Longitude		PDOP Value	VOC Concentration ² (ppm)
FL01-01@4'	10/17/2024	4	40.136872	-104.968148	NC	0.0
FL01-02@4'	10/17/2024	4	40.136645	-104.967817	1.0	0.0
FL01-03@4'	10/17/2024	4	40.136244	-104.967809	1.0	0.0
FL01-04@4'	10/17/2024	4	40.135868	-104.968013	1.0	0.0
FL01-05@5'	10/17/2024	5	40.135432	-104.968342	1.0	0.0
FL01-06@5'	10/17/2024	5	40.135349	-104.968315	1.0	0.0
FL01-07@3'	10/17/2024	3	40.135075	-104.967964	1.2	0.0
FL01-08@3'	10/17/2024	3	40.134770	-104.967667	1.1	0.0
FL01R-S@4'	10/17/2024	4	40.134614	-104.967745	1.2	0.0
FL01R-W@4'	10/17/2024	4	40.137134	-104.968505	0.9	0.0
BH01@3-4'	04/03/2025	3-4	40.137144	-104.968503	NC	1.5
BH01@5-6'	04/03/2025	5-6	40.137144	-104.968503	NC	0.2
BH01@7-8'	04/03/2025	7-8	40.137144	-104.968503	NC	0.1
BH02@3-4'	04/03/2025	3-4	40.137186	-104.968503	NC	0.8
BH02@5-6'	04/03/2025	5-6	40.137186	-104.968503	NC	0.7
BH02@7-8'	04/03/2025	7-8	40.137186	-104.968503	NC	0.4
BH03@3-4'	04/03/2025	3-4	40.137103	-104.968502	NC	1.4
BH03@5-6'	04/03/2025	5-6	40.137103	-104.968502	NC	0.1
BH03@7-8'	04/03/2025	7-8	40.137103	-104.968502	NC	0.0
BH04@3-4'	04/03/2025	3-4	40.137145	-104.968556	NC	1.5
BH04@5-6'	04/03/2025	5-6	40.137145	-104.968556	NC	0.8
BH04@7-8'	04/03/2025	7-8	40.137145	-104.968556	NC	0.7
BH05@3-4'	04/03/2025	3-4	40.137144	-104.968449	NC	1.2
BH05@5-6'	04/03/2025	5-6	40.137144	-104.968449	NC	0.1

TABLE 1
FIELD DATA SUMMARY TABLE
PDC ENERGY, INC. - 69175
MDM 33-14 FLOWLINE, WELD COUNTY, COLORADO
REM # 32449



Sample ID	Sample Date	Depth (ft. bgs)	GPS Data ¹ Latitude/Longitude		PDOP Value	VOC Concentration ² (ppm)
BH05@7-8'	04/03/2025	7-8	40.137144	-104.968449	NC	0.0
GW01@5'	10/17/2024	5	40.135350	-104.968312	1.0	NA
GW02@4'	10/17/2024	4	40.136247	-104.967799	0.9	NA
BKG01@0-0.5"	10/17/2024	0-0.5	40.137106	-104.968146	0.9	0.2
BKG01@2.5'	10/17/2024	2.5	40.137106	-104.968146	0.9	0.2
BKG01@3'	10/17/2024	3	40.137106	-104.968146	0.9	0.1
BKG01@4'	10/17/2024	4	40.137106	-104.968146	0.9	0.0
BKG01@5'	10/17/2024	5	40.137106	-104.968146	0.9	0.0
BKG02@3-4'	04/03/2025	3-4	40.137412	-104.968654	NC	1.1
BKG02@5-6'	04/03/2025	5-6	40.137412	-104.968654	NC	0.1
BKG02@7-8'	04/03/2025	7-8	40.137412	-104.968654	NC	0.0
BKG03@3-4'	04/03/2025	3-4	40.137260	-104.968940	NC	0.8
BKG03@5-6'	04/03/2025	5-6	40.137260	-104.968940	NC	0.0
BKG03@7-8'	04/03/2025	7-8	40.137260	-104.968940	NC	0.0
BKG04@3-4'	04/03/2025	3-4	40.136946	-104.968822	NC	0.1
BKG04@5-6'	04/03/2025	5-6	40.136946	-104.968822	NC	0.3
BKG04@7-8'	04/03/2025	7-8	40.136946	-104.968822	NC	0.0
BKG05@3-4'	04/03/2025	3-4	40.136824	-104.968426	NC	0.0
BKG05@5-6'	04/03/2025	5-6	40.136824	-104.968426	NC	0.0
BKG05@7-8'	04/03/2025	7-8	40.136824	-104.968426	NC	0.0

TABLE 1
FIELD DATA SUMMARY TABLE
PDC ENERGY, INC. - 69175
MDM 33-14 FLOWLINE, WELD COUNTY, COLORADO
REM # 32449



Sample ID	Sample Date	Depth (ft. bgs)	GPS Data ¹		PDOP Value	VOC Concentration ² (ppm)
			Latitude/Longitude			
BKG06@3-4'	04/03/2025	3-4	40.137364	-104.968182	NC	0.8
BKG06@5-6'	04/03/2025	5-6	40.137364	-104.968182	NC	0.1
BKG06@7-8'	04/03/2025	7-8	40.137364	-104.968182	NC	0.0

Notes:

1. Global Positioning System (GPS) data is provided in decimal degrees using North American Datum (NAD) 83 UTM Zone 13 North.
2. Volatile organic compound (VOC) concentrations are measured in the field using a photoionization detector (PID).

PDOP = Position Dilution of Precision

ppm = Parts per million

ft. = Feet

bgs = Below ground surface

NC = Not collected

NA = Not analyzed

Source material characterization sample, excavated and transported off site for disposal.

Material excavated and transported off site for disposal.

TABLE 2
SUMMARY OF VOLATILE ORGANIC SOIL CHEMISTRY DATA
PDC ENERGY, INC. - 69175
MDM 33-14 FLOWLINE, WELD COUNTY, COLORADO
REM # 32449



Sample ID	Sample Date	Depth (ft. bgs)	Benzene (mg/kg)	Toluene (mg/kg)	Ethyl-Benzene (mg/kg)	Xylenes (mg/kg)	1,2,4-Trimethyl-Benzene (mg/kg)	1,3,5-Trimethyl-Benzene (mg/kg)	Naphthalene (mg/kg)	TPH (mg/kg)	TPH GRO (mg/kg)	TPH DRO (mg/kg)	TPH ORO (mg/kg)
ECMC Table 915-1 Limits (Residential SSL)			1.2	490	5.8	58	30	27	2	500	500**		
ECMC Table 915-1 Limits (Protection of Groundwater SSL)			0.0026	0.69	0.78	9.9	0.0081	0.0087	0.0038	500	500**		
FL01-02@4'	10/17/2024	4	<0.0020	<0.0050	<0.0050	<0.010	<0.0050	<0.0050	<0.0038	<50	<0.50	<50	<50
FL01-04@4'	10/17/2024	4	<0.0020	<0.0050	<0.0050	<0.010	<0.0050	<0.0050	<0.0038	<50	<0.50	<50	<50
FL01-05@5'	10/17/2024	5	<0.0020	<0.0050	<0.0050	<0.010	<0.0050	<0.0050	<0.0038	<50	<0.50	<50	<50
FL01-06@5'	10/17/2024	5	<0.0020	<0.0050	<0.0050	<0.010	<0.0050	<0.0050	<0.0038	<50	<0.50	<50	<50
FL01-07@3'	10/17/2024	3	<0.0020	<0.0050	<0.0050	<0.010	<0.0050	<0.0050	<0.0038	<50	<0.50	<50	<50
FL01-08@3'	10/17/2024	3	<0.0020	<0.0050	<0.0050	<0.010	<0.0050	<0.0050	<0.0038	<50	<0.50	<50	<50
FL01R-S@4'	10/17/2024	4	<0.0020	<0.0050	<0.0050	<0.010	<0.0050	<0.0050	<0.0038	<50	<0.50	<50	<50
FL01R-W@4'	10/17/2024	4	<0.0020	<0.0050	<0.0050	<0.010	<0.0050	<0.0050	<0.0038	<50	<0.50	<50	<50
BKG01@0-6"	10/17/2024	0-0.5	<0.0020	<0.0050	<0.0050	<0.010	<0.0050	<0.0050	<0.0038	<50	<0.50	<50	<50
BKG01@2.5'	10/17/2024	2.5	<0.0020	<0.0050	<0.0050	<0.010	<0.0050	<0.0050	<0.0038	<50	<0.50	<50	<50
BKG01@3'	10/17/2024	3	<0.0020	<0.0050	<0.0050	<0.010	<0.0050	<0.0050	<0.0038	<50	<0.50	<50	<50
BKG01@4'	10/17/2024	4	<0.0020	<0.0050	<0.0050	<0.010	<0.0050	<0.0050	<0.0038	<50	<0.50	<50	<50
BKG01@5'	10/17/2024	5	<0.0020	<0.0050	<0.0050	<0.010	<0.0050	<0.0050	<0.0038	<50	<0.50	<50	<50
BH01@3-4'	04/03/2025	3-4	<0.0020	<0.0050	<0.0050	<0.010	<0.0050	<0.0050	<0.0038	<50	<0.50	<50	<50
BH01@5-6'	04/03/2025	5-6	<0.0020	<0.0050	<0.0050	<0.010	<0.0050	<0.0050	<0.0038	<50	<0.50	<50	<50
BH01@7-8'	04/03/2025	7-8	<0.0020	<0.0050	<0.0050	<0.010	<0.0050	<0.0050	<0.0038	<50	<0.50	<50	<50
BH02@3-4'	04/03/2025	3-4	<0.0020	<0.0050	<0.0050	<0.010	<0.0050	<0.0050	<0.0038	<50	<0.50	<50	<50
BH02@5-6'	04/03/2025	5-6	<0.0020	<0.0050	<0.0050	<0.010	<0.0050	<0.0050	<0.0038	<50	<0.50	<50	<50
BH02@7-8'	04/03/2025	7-8	<0.0020	<0.0050	<0.0050	<0.010	<0.0050	<0.0050	<0.0038	<50	<0.50	<50	<50
BH03@3-4'	04/03/2025	3-4	<0.0020	<0.0050	<0.0050	<0.010	<0.0050	<0.0050	<0.0038	<50	<0.50	<50	<50
BH03@5-6'	04/03/2025	5-6	<0.0020	<0.0050	<0.0050	<0.010	<0.0050	<0.0050	<0.0038	<50	<0.50	<50	<50
BH03@7-8'	04/03/2025	7-8	<0.0020	<0.0050	<0.0050	<0.010	<0.0050	<0.0050	<0.0038	<50	<0.50	<50	<50
BH04@3-4'	04/03/2025	3-4	<0.0020	<0.0050	<0.0050	<0.010	<0.0050	<0.0050	<0.0038	<50	<0.50	<50	<50
BH04@5-6'	04/03/2025	5-6	<0.0020	<0.0050	<0.0050	<0.010	<0.0050	<0.0050	<0.0038	<50	<0.50	<50	<50
BH04@7-8'	04/03/2025	7-8	<0.0020	<0.0050	<0.0050	<0.010	<0.0050	<0.0050	<0.0038	<50	<0.50	<50	<50

TABLE 2
SUMMARY OF VOLATILE ORGANIC SOIL CHEMISTRY DATA
PDC ENERGY, INC. - 69175
MDM 33-14 FLOWLINE, WELD COUNTY, COLORADO
REM # 32449



Sample ID	Sample Date	Depth (ft. bgs)	Benzene (mg/kg)	Toluene (mg/kg)	Ethyl-Benzene (mg/kg)	Xylenes (mg/kg)	1,2,4-Trimethyl-Benzene (mg/kg)	1,3,5-Trimethyl-Benzene (mg/kg)	Naphthalene (mg/kg)	TPH (mg/kg)	TPH GRO (mg/kg)	TPH DRO (mg/kg)	TPH ORO (mg/kg)
ECMC Table 915-1 Limits (Residential SSL)			1.2	490	5.8	58	30	27	2	500	500**		
ECMC Table 915-1 Limits (Protection of Groundwater SSL)			0.0026	0.69	0.78	9.9	0.0081	0.0087	0.0038	500	500**		
BH05@3-4'	04/03/2025	3-4	<0.0020	<0.0050	<0.0050	<0.010	<0.0050	<0.0050	<0.0038	<50	<0.50	<50	<50
BH05@5-6'	04/03/2025	5-6	<0.0020	<0.0050	<0.0050	<0.010	<0.0050	<0.0050	<0.0038	<50	<0.50	<50	<50
BH05@7-8'	04/03/2025	7-8	<0.0020	<0.0050	<0.0050	<0.010	<0.0050	<0.0050	<0.0038	<50	<0.50	<50	<50

Notes:

1. **Bold** values exceed the ECMC Table 915-1 limit(s).
2. Red & blue highlighted soil analytical values indicate an exceedance of the referenced soil screening level (SSL).
3. ** Summation of GRO+DRO+ORO must be less than 500 mg/kg.

Analyzed outside of allotted holding times due to delays at Summit Scientific.

ECMC = Energy and Carbon Management Commission

(<) = Analytical result is less than the indicated laboratory reporting limit.

TPH-GRO = Total petroleum hydrocarbons - gasoline range organics

TPH-DRO = Total petroleum hydrocarbons - diesel range organics

TPH-ORO = Total petroleum hydrocarbons - oil range organics

mg/kg = Milligrams per kilogram

ft. = Feet

bgs = Below ground surface

NA = Not analyzed

Source material characterization sample, excavated and transported off site for disposal.

Material excavated and transported off site for disposal.

TABLE 3
SUMMARY OF POLYCYCLIC AROMATIC HYDROCARBON SOIL CHEMISTRY DATA
PDC ENERGY, INC. - 69175
MDM 33-14 FLOWLINE, WELD COUNTY, COLORADO
REM # 32449



Sample ID	Sample Date	Depth (ft. bgs)	Acenaphthene (mg/kg)	Anthracene (mg/kg)	Benzo (a) Anthracene (mg/kg)	Benzo (a) Pyrene (mg/kg)	Benzo (b) Fluoranthene (mg/kg)	Benzo (k) Fluoranthene (mg/kg)	Chrysene (mg/kg)	Dibenzo (a,h) Anthracene (mg/kg)	Fluoranthene (mg/kg)	Fluorene (mg/kg)	Indeno (1,2,3-cd) Pyrene (mg/kg)	Pyrene (mg/kg)	1-Methyl - Naphthalene (mg/kg)	2-Methyl - Naphthalene (mg/kg)
ECMC Table 915-1 Limits (Residential SSL)			360	1800	1.1	0.11	1.1	11	110	0.11	240	240	1.1	180	18	24
ECMC Table 915-1 Limits (Protection of Groundwater SSL)			0.55	5.8	0.011	0.24	0.3	2.9	9	0.096	8.9	0.54	0.98	1.3	0.006	0.019
FL01-02@4'	10/17/2024	4	<0.00500	<0.00500	<0.00500	<0.00500	<0.00500	<0.00500	<0.00500	<0.00500	<0.00500	<0.00500	<0.00500	<0.00500	<0.00500	<0.00500
FL01-04@4'	10/17/2024	4	<0.00500	<0.00500	<0.00500	<0.00500	<0.00500	<0.00500	<0.00500	<0.00500	<0.00500	<0.00500	<0.00500	<0.00500	<0.00500	<0.00500
FL01-05@5'	10/17/2024	5	<0.00500	<0.00500	<0.00500	<0.00500	<0.00500	<0.00500	<0.00500	<0.00500	<0.00500	<0.00500	<0.00500	<0.00500	<0.00500	<0.00500
FL01-06@5'	10/17/2024	5	<0.00500	<0.00500	<0.00500	<0.00500	<0.00500	<0.00500	<0.00500	<0.00500	<0.00500	<0.00500	<0.00500	<0.00500	<0.00500	<0.00500
FL01-07@3'	10/17/2024	3	<0.00500	<0.00500	<0.00500	<0.00500	<0.00500	<0.00500	<0.00500	<0.00500	<0.00500	<0.00500	<0.00500	<0.00500	<0.00500	<0.00500
FL01-08@3'	10/17/2024	3	<0.00500	<0.00500	<0.00500	<0.00500	<0.00500	<0.00500	<0.00500	<0.00500	<0.00500	<0.00500	<0.00500	<0.00500	<0.00500	<0.00500
FL01R-5@4'	10/17/2024	4	<0.00500	<0.00500	<0.00500	<0.00500	<0.00500	<0.00500	<0.00500	<0.00500	<0.00500	<0.00500	<0.00500	<0.00500	<0.00500	<0.00500
FL01R-W@4'	10/17/2024	4	<0.00500	<0.00500	<0.00500	<0.00500	<0.00500	<0.00500	<0.00500	<0.00500	<0.00500	<0.00500	<0.00500	<0.00500	<0.00500	<0.00500
BKG01@0-6"	10/17/2024	0-0.5	<0.00500	<0.00500	<0.00500	<0.00500	<0.00500	<0.00500	<0.00500	<0.00500	<0.00500	<0.00500	<0.00500	<0.00500	<0.00500	<0.00500
BKG01@2.5'	10/17/2024	2.5	<0.00500	<0.00500	<0.00500	<0.00500	<0.00500	<0.00500	<0.00500	<0.00500	<0.00500	<0.00500	<0.00500	<0.00500	<0.00500	<0.00500
BKG01@3'	10/17/2024	3	<0.00500	<0.00500	<0.00500	<0.00500	<0.00500	<0.00500	<0.00500	<0.00500	<0.00500	<0.00500	<0.00500	<0.00500	<0.00500	<0.00500
BKG01@4'	10/17/2024	4	<0.00500	<0.00500	<0.00500	<0.00500	<0.00500	<0.00500	<0.00500	<0.00500	<0.00500	<0.00500	<0.00500	<0.00500	<0.00500	<0.00500
BKG01@5'	10/17/2024	5	<0.00500	<0.00500	<0.00500	<0.00500	<0.00500	<0.00500	<0.00500	<0.00500	<0.00500	<0.00500	<0.00500	<0.00500	<0.00500	<0.00500
BH01@3-4'	04/03/2025	3-4	<0.00500	<0.00500	<0.00500	<0.00500	<0.00500	<0.00500	<0.00500	<0.00500	<0.00500	<0.00500	<0.00500	<0.00500	<0.00500	<0.00500
BH01@5-6'	4/3/2025	5-6	<0.00500	<0.00500	<0.00500	<0.00500	<0.00500	<0.00500	<0.00500	<0.00500	<0.00500	<0.00500	<0.00500	<0.00500	<0.00500	<0.00500
BH01@7-8'	4/3/2025	7-8	<0.00500	<0.00500	<0.00500	<0.00500	<0.00500	<0.00500	<0.00500	<0.00500	<0.00500	<0.00500	<0.00500	<0.00500	<0.00500	<0.00500
BH02@3-4'	4/3/2025	3-4	<0.00500	<0.00500	<0.00500	<0.00500	<0.00500	<0.00500	<0.00500	<0.00500	<0.00500	<0.00500	<0.00500	<0.00500	<0.00500	<0.00500
BH02@5-6'	4/3/2025	5-6	<0.00500	<0.00500	<0.00500	<0.00500	<0.00500	<0.00500	<0.00500	<0.00500	<0.00500	<0.00500	<0.00500	<0.00500	<0.00500	<0.00500
BH02@7-8'	4/3/2025	7-8	<0.00500	<0.00500	<0.00500	<0.00500	<0.00500	<0.00500	<0.00500	<0.00500	<0.00500	<0.00500	<0.00500	<0.00500	<0.00500	<0.00500
BH03@3-4'	4/3/2025	3-4	<0.00500	<0.00500	<0.00500	<0.00500	<0.00500	<0.00500	<0.00500	<0.00500	<0.00500	<0.00500	<0.00500	<0.00500	<0.00500	<0.00500
BH03@5-6'	4/3/2025	5-6	<0.00500	<0.00500	<0.00500	<0.00500	<0.00500	<0.00500	<0.00500	<0.00500	<0.00500	<0.00500	<0.00500	<0.00500	<0.00500	<0.00500
BH03@7-8'	4/3/2025	7-8	<0.00500	<0.00500	<0.00500	<0.00500	<0.00500	<0.00500	<0.00500	<0.00500	<0.00500	<0.00500	<0.00500	<0.00500	<0.00500	<0.00500
BH04@3-4'	4/3/2025	3-4	<0.00500	<0.00500	<0.00500	<0.00500	<0.00500	<0.00500	<0.00500	<0.00500	<0.00500	<0.00500	<0.00500	<0.00500	<0.00500	<0.00500
BH04@5-6'	4/3/2025	5-6	<0.00500	<0.00500	<0.00500	<0.00500	<0.00500	<0.00500	<0.00500	<0.00500	<0.00500	<0.00500	<0.00500	<0.00500	<0.00500	<0.00500
BH04@7-8'	4/3/2025	7-8	<0.00500	<0.00500	<0.00500	<0.00500	<0.00500	<0.00500	<0.00500	<0.00500	<0.00500	<0.00500	<0.00500	<0.00500	<0.00500	<0.00500
BH05@3-4'	04/03/2025	3-4	<0.00500	<0.00500	<0.00500	<0.00500	<0.00500	<0.00500	<0.00500	<0.00500	<0.00500	<0.00500	<0.00500	<0.00500	<0.00500	<0.00500
BH05@5-6'	04/03/2025	5-6	<0.00500	<0.00500	<0.00500	<0.00500	<0.00500	<0.00500	<0.00500	<0.00500	<0.00500	<0.00500	<0.00500	<0.00500	<0.00500	<0.00500
BH05@7-8'	04/03/2025	7-8	<0.00500	<0.00500	<0.00500	<0.00500	<0.00500	<0.00500	<0.00500	<0.00500	<0.00500	<0.00500	<0.00500	<0.00500	<0.00500	<0.00500

Notes:

1. **Bold** values exceed the ECMC Table 915-1 limit(s).
2. Red & blue highlighted soil analytical values indicate an exceedance of the referenced soil screening level (SSL).
3. * Indicates laboratory minimum detection limit in excess of SSL.

ECMC = Energy and Carbon Management Commission

(<) = Analytical result is less than the indicated laboratory reporting limit.

mg/kg = Milligrams per kilogram

ft. = Feet

bgs = Below ground surface

NA = Not analyzed

Source material characterization sample, excavated and transported off site for disposal.

Material excavated and transported off site for disposal.

TABLE 4
SUMMARY OF SOIL SUITABILITY FOR RECLAMATION
PDC ENERGY, INC. - 69175
MDM 33-14 FLOWLINE, WELD COUNTY, COLORADO
REM # 32449



Sample ID	Sample Date	Depth (ft. bgs)	pH (Standard Units)	EC (mmhos/cm)	SAR (Standard Units)	Boron (mg/L)
ECMC Table 915-1 Soil Suitability Limits			6 - 8.3	<4	<6	2
FL01-02@4'	10/17/2024	4	7.64	1.32	4.19	<2.00
FL01-04@4'	10/17/2024	4	7.99	0.434	2.03	<2.00
FL01-05@5'	10/17/2024	5	7.84	0.428	1.71	<2.00
FL01-06@5'	10/17/2024	5	7.64	0.778	1.56	<2.00
FL01-07@3'	10/17/2024	3	7.72	1.75	4.66	<2.00
FL01-08@3'	10/17/2024	3	7.96	1.90	6.02	<2.00
FL01R-S@4'	10/17/2024	4	8.46	0.221	0.0596	<2.00
FL01R-W@4'	10/17/2024	4	8.17	0.387	0.441	<2.00
BH01@3-4'	04/03/2025	3-4	8.11	0.413	1.04	<2.00
BH01@5-6'	4/3/2025	5-6	8.31	0.596	1.89	<2.00
BH01@7-8'	4/3/2025	7-8	8.09	0.675	1.96	<2.00
BH02@3-4'	4/3/2025	3-4	8.68	0.396	2.50	<2.00
BH02@5-6'	4/3/2025	5-6	8.63	0.395	1.50	<2.00
BH02@7-8'	4/3/2025	7-8	8.09	0.805	2.25	<2.00
BH03@3-4'	4/3/2025	3-4	8.36	0.616	3.67	<2.00
BH03@5-6'	4/3/2025	5-6	7.95	0.848	2.64	<2.00
BH03@7-8'	4/3/2025	7-8	7.96	0.860	2.31	<2.00
BH04@3-4'	4/3/2025	3-4	8.18	0.712	3.17	<2.00
BH04@5-6'	4/3/2025	5-6	7.94	0.909	2.55	<2.00
BH04@7-8'	4/3/2025	7-8	8.07	0.694	2.32	<2.00
BH05@3-4'	04/03/2025	3-4	8.21	3.08	8.32	<2.00
BH05@5-6'	04/03/2025	5-6	8.27	0.719	2.23	<2.00
BH05@7-8'	04/03/2025	7-8	7.80	1.23	3.17	<2.00
BKG01@0-6"	10/17/2024	0-0.5	7.92	1.57	6.93	<2.00
BKG01@2.5'	10/17/2024	2.5	8.03	2.52	9.19	<2.00
BKG01@3'	10/17/2024	3	7.78	1.05	2.97	<2.00
BKG01@4'	10/17/2024	4	8.13	0.853	2.42	<2.00
BKG01@5'	10/17/2024	5	8.01	0.821	2.16	<2.00
BKG02@3-4'	04/03/2025	3-4	8.11	1.61	5.89	<2.00
BKG02@5-6'	04/03/2025	5-6	7.88	0.93	3.12	<2.00
BKG02@7-8'	04/03/2025	7-8	7.82	0.934	2.77	<2.00
BKG03@3-4'	04/03/2025	3-4	8.55	1.83	9.71	<2.00
BKG03@5-6'	04/03/2025	5-6	8.33	0.644	2.52	<2.00
BKG03@7-8'	04/03/2025	7-8	8.15	0.514	2.03	<2.00
BKG04@3-4'	04/03/2025	3-4	8.52	2.46	9.77	<2.00

TABLE 4
SUMMARY OF SOIL SUITABILITY FOR RECLAMATION
PDC ENERGY, INC. - 69175
MDM 33-14 FLOWLINE, WELD COUNTY, COLORADO
REM # 32449



Sample ID	Sample Date	Depth (ft. bgs)	pH (Standard Units)	EC (mmhos/cm)	SAR (Standard Units)	Boron (mg/L)
ECMC Table 915-1 Soil Suitability Limits			6 - 8.3	<4	<6	2
BKG04@5-6'	04/03/2025	5-6	8.08	0.732	3.26	<2.00
BKG04@7-8'	04/03/2025	7-8	7.77	0.905	1.08	<2.00
BKG05@3-4'	04/03/2025	3-4	8.27	1.65	7.29	<2.00
BKG05@5-6'	04/03/2025	5-6	8.00	0.625	2.62	<2.00
BKG05@7-8'	04/03/2025	7-8	8.37	0.369	1.9	<2.00
BKG06@3-4'	04/03/2025	3-4	8.41	1.26	5.68	<2.00
BKG06@5-6'	04/03/2025	5-6	8.09	1.2	3.54	<2.00
BKG06@7-8'	04/03/2025	7-8	7.52	1.34	3.62	<2.00
Maximum Background Concentration			8.55	-	9.77	-

Notes:

1. **Bold** faced values exceed the ECMC Table 915-1 limit(s), but are within background concentrations.
2. **Bold** faced values exceed the ECMC Table 915-1 limit(s) and native background concentrations.
3. Brown highlighted soil analytical values indicate a regulatory exceedance.

ECMC = Energy and Carbon Management Commission

(<) = Analytical result is less than the indicated laboratory reporting limit.

mg/L = Milligrams per liter

ft. = Feet

bgs = Below ground surface

NA = Not analyzed

EC = Electrical conductivity

SAR = Sodium adsorption ratio

mmhos/cm = Millimohs per centimeter

Source material characterization sample, excavated and transported off site for disposal.

Material excavated and transported off site for disposal.

TABLE 5
SUMMARY OF METALS IN SOIL CHEMISTRY DATA
PDC ENERGY, INC. - 69175
MDM 33-14 FLOWLINE, WELD COUNTY, COLORADO
REM # 32449



Sample ID	Sample Date	Depth (ft. bgs)	Arsenic (mg/kg)	Barium (mg/kg)	Cadmium (mg/kg)	Chromium (VI) ⁶ (mg/kg)	Copper (mg/kg)	Lead (mg/kg)	Nickel (mg/kg)	Selenium (mg/kg)	Silver (mg/kg)	Zinc (mg/kg)
ECMC Table 915-1 Limits (Residential SSL)			0.68	15000	71	0.3	3100	400	1500	390	390	23000
ECMC Table 915-1 Limits (Protection of Groundwater SSL)			0.29	82	0.38	0.00067	46	14	26	0.26	0.8	370
FL01-02@4'	10/17/2024	4	3.38	122	0.247	<0.30*	6.96	8.83	8.08	<0.260	0.0434	26.8
FL01-04@4'	10/17/2024	4	4.61	168	0.398	<0.30*	9.24	12.8	9.24	<0.260	0.0762	34.4
FL01-05@5'	10/17/2024	5	3.19	103	0.264	<0.30*	7.83	10.6	7.7	<0.260	0.0582	28.3
FL01-06@5'	10/17/2024	5	3.61	94.5	0.269	<0.30*	7.92	10.9	7.8	0.282	0.0636	30.6
FL01-07@3'	10/17/2024	3	3.27	91.9	0.242	<0.30*	6.76	8.73	7.13	<0.260	0.0433	27
FL01-08@3'	10/17/2024	3	2.93	96.7	0.233	<0.30*	6.61	8.17	6.55	<0.260	0.0465	24.3
FL01R-S@4'	10/17/2024	4	3.89	106	0.242	<0.30*	7.95	8.95	6.97	<0.260	0.05	25.8
FL01R-W@4'	10/17/2024	4	4.41	128	1.02	<0.30*	12.5	23.5	8.28	0.276	0.0703	51
BH01@3-4'	04/03/2025	3-4	1.60	55.6	0.388	<0.30*	6.08	7.37	4.17	<0.260	0.0222	27.5
BH01@5-6'	4/3/2025	5-6	4.21	125	0.235	<0.30*	10.6	10.9	10.7	<0.260	0.0568	39.6
BH01@7-8'	4/3/2025	7-8	4.38	155	0.265	<0.30*	11.3	10.3	10.6	<0.260	0.0396	41.2
BH02@3-4'	4/3/2025	3-4	3.58	107	<0.200	<0.30*	9.59	8.21	9.46	<0.260	0.0362	37.0
BH02@5-6'	4/3/2025	5-6	4.52	174	0.296	<0.30*	12.7	13.9	12.5	<0.260	0.0609	51.3
BH02@7-8'	4/3/2025	7-8	4.11	132	<0.200	<0.30*	9.98	10.1	9.61	<0.260	0.0383	42.2
BH03@3-4'	4/3/2025	3-4	3.09	96.2	<0.200	<0.30*	7.96	7.02	7.02	<0.260	0.0247	35.6
BH03@5-6'	4/3/2025	5-6	4.80	175	0.221	<0.30*	13.2	12.8	12.5	<0.260	0.0843	46.7
BH03@7-8'	4/3/2025	7-8	3.71	119	0.291	<0.30*	9.82	9.00	9.55	<0.260	0.0314	38.9
BH04@3-4'	4/3/2025	3-4	3.81	139	<0.200	<0.30*	11.0	10.2	10.4	<0.260	0.0567	41.9
BH04@5-6'	4/3/2025	5-6	4.30	137	<0.200	<0.30*	11.6	8.51	9.69	<0.260	0.0370	37.3
BH04@7-8'	4/3/2025	7-8	3.27	148	0.376	<0.30*	6.21	13.4	5.66	0.262	0.0293	21.0
BH05@3-4'	04/03/2025	3-4	1.33	106	<0.200	<0.30*	4.30	7.23	4.46	<0.260	0.0278	17.0
BH05@5-6'	04/03/2025	5-6	3.59	129	0.240	<0.30*	6.59	9.88	8.04	<0.260	0.0366	26.7
BH05@7-8'	04/03/2025	7-8	2.37	84.2	<0.200	<0.30*	5.99	8.75	5.49	<0.260	0.0319	20.3
BKG01@0-6"	10/17/2024	0-0.5	3.90	107	0.262	<0.30*	7.05	9.72	7.58	<0.260	0.0535	27.9
BKG01@2.5'	10/17/2024	2.5	4.27	115	0.273	<0.30*	6.78	9.52	8.69	<0.260	0.0486	26.8
BKG01@3'	10/17/2024	3	3.73	55.8	<0.200	<0.30*	5.27	7.43	6.11	<0.260	0.0328	23.0
BKG01@4'	10/17/2024	4	6.53	44.5	0.275	<0.30*	6.85	9.84	8.37	0.267	0.0214	32.3
BKG01@5'	10/17/2024	5	7.18	48.0	0.370	<0.30*	8.41	10.1	8.88	<0.260	0.0284	29.5
BKG02@3-4'	04/03/2025	3-4	1.56	118	<0.200	<0.30*	5.50	10.2	5.43	<0.260	0.0382	18.7

TABLE 5
SUMMARY OF METALS IN SOIL CHEMISTRY DATA
PDC ENERGY, INC. - 69175
MDM 33-14 FLOWLINE, WELD COUNTY, COLORADO
REM # 32449



Sample ID	Sample Date	Depth (ft. bgs)	Arsenic (mg/kg)	Barium (mg/kg)	Cadmium (mg/kg)	Chromium (VI) ⁶ (mg/kg)	Copper (mg/kg)	Lead (mg/kg)	Nickel (mg/kg)	Selenium (mg/kg)	Silver (mg/kg)	Zinc (mg/kg)
ECMC Table 915-1 Limits (Residential SSL)			0.68	15000	71	0.3	3100	400	1500	390	390	23000
ECMC Table 915-1 Limits (Protection of Groundwater SSL)			0.29	82	0.38	0.00067	46	14	26	0.26	0.8	370
BKG02@5-6'	04/03/2025	5-6	1.77	94.8	<0.200	<0.30*	5.03	6.96	5.24	<0.260	0.0291	17.8
BKG02@7-8'	04/03/2025	7-8	1.77	98.4	<0.200	<0.30*	4.65	6.59	4.73	<0.260	0.0246	18.4
BKG03@3-4'	04/03/2025	3-4	1.65	90.0	<0.200	<0.30*	6.43	7.33	5.13	<0.260	0.0429	17.8
BKG03@5-6'	04/03/2025	5-6	1.90	135	0.242	<0.30*	5.62	10.6	6.31	<0.260	0.0393	21.4
BKG03@7-8'	04/03/2025	7-8	1.83	245	<0.200	<0.30*	8.71	9.22	8.53	<0.260	0.0400	26.5
BKG04@3-4'	04/03/2025	3-4	1.35	90.8	0.221	<0.30*	4.39	9.62	4.13	<0.260	0.0357	17.7
BKG04@5-6'	04/03/2025	5-6	1.63	112	<0.200	<0.30*	6.33	8.4	5.73	<0.260	0.0400	20.4
BKG04@7-8'	04/03/2025	7-8	1.70	102	<0.200	<0.30*	5.10	6.61	5.41	<0.260	0.0274	19.5
BKG05@3-4'	04/03/2025	3-4	1.24	192	0.275	<0.30*	6.73	13.3	5.37	<0.260	0.0494	21.7
BKG05@5-6'	04/03/2025	5-6	1.89	132	<0.200	<0.30*	6.15	10.2	5.95	<0.260	0.0486	21.0
BKG05@7-8'	04/03/2025	7-8	1.90	148	0.208	<0.30*	6.28	10.3	5.91	<0.260	0.0472	21.3
BKG06@3-4'	04/03/2025	3-4	2.11	150	0.273	<0.30*	7.87	13.4	7.45	<0.260	0.0722	25.3
BKG06@5-6'	04/03/2025	5-6	2.72	107	0.225	<0.30*	5.67	11.0	6.33	<0.260	0.0344	23.8
BKG06@7-8'	04/03/2025	7-8	3.06	103	0.253	<0.30*	5.88	11.0	6.57	<0.260	0.0315	25.0
1.25x Maximum Background Concentration			8.98	306	0.463	-	-	16.8	-	0.334	-	-

Notes:

1. **Bold** faced values exceed the ECMC Table 915-1 limit(s), but are within 1.25x background concentrations.
2. **Red** faced values exceed the ECMC Table 915-1 limit(s) and native background concentrations.
3. Red & blue highlighted soil analytical values indicate an exceedance of the referenced soil screening level (SSL).
4. Reporting limit used for 1.25 multiplier when all background results for a specific metal are non-detect.
5. * Indicates laboratory minimum detection limit in excess of SSL.
6. Compound falls within the ECMC Table 915-1 footnote 9.

ECMC = Energy & Carbon Management Commission

(<) = Analytical result is less than the indicated laboratory reporting limit.

mg/kg = Milligrams per kilogram

ft. = Feet

bgs = Below ground surface

NA = Not analyzed

Source material characterization sample, excavated and transported off site for disposal.

Material excavated and transported off site for disposal.

TABLE 6
SUMMARY OF GROUNDWATER ELEVATION DATA AND ORGANIC CHEMISTRY DATA
PDC ENERGY, INC. - 69175
MDM 33-14 FLOWLINE, WELD COUNTY, COLORADO
REM # 32449



Sample ID	Sample Date	Benzene (µg/L)	Toluene (µg/L)	Ethyl-Benzene (µg/L)	Xylenes (µg/L)	Naphthalene (µg/L)	1,2,4-Trimethyl-Benzene (µg/L)	1,3,5-Trimethyl-Benzene (µg/L)	Depth to Groundwater Below Ground Surface (ft)
ECMC Table 915-1 Limits		5.0	560	700	1,400	140	67	67	
GW01@5'	10/17/2024	<1.0	<1.0	<1.0	<2.0	<1.0	<1.0	<1.0	5
GW02@4'	10/17/2024	<1.0	<1.0	<1.0	<2.0	<1.0	<1.0	<1.0	4

Notes:

1. **Bold** values exceed the ECMC limit(s)
2. Blue highlighted groundwater analytical values indicate a regulatory exceedance

NA = Not Analyzed

ECMC = Energy & Carbon Management Commission

(<) = Analytical result is less than the indicated laboratory reporting limit.

µg/L = micrograms per liter

ft. = Feet

TABLE 7
SUMMARY OF INORGANIC GROUNDWATER CHEMISTRY DATA
PDC ENERGY, INC. - 69175
MDM 33-14 FLOWLINE, WELD COUNTY, COLORADO
REM # 32449



Sample ID	Sample Date	Total Dissolved Solids (mg/L)	Chloride Ion (mg/L)	Sulfate Ion (mg/L)
ECMC Table 915-1 Limits		<1.25 x local background	250 or <1.25 x local background	250 or <1.25 x local background
GW01@5'	10/17/2024	607	41.2	70.1
GW02@4'	10/17/24	1500	101	684
Background Concentration (Current)		-	-	-

Notes:

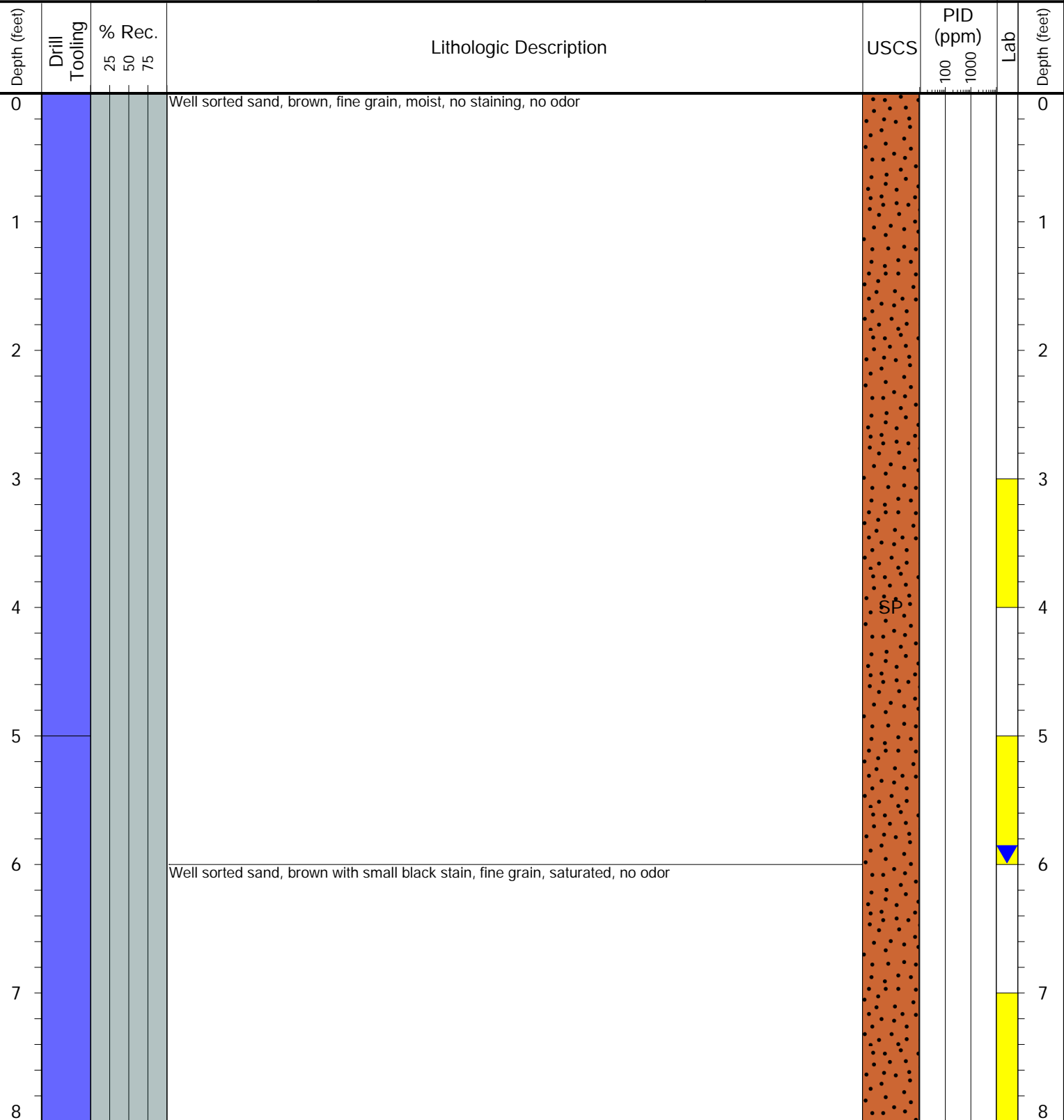
1. **Bold** values exceed the ECMC limit(s)
 2. Blue highlighted groundwater analytical values indicate a regulatory exceedance
- NA = Not Analyzed, IW = Insufficient Water
ECMC = Energy & Carbon Management Commission
mg/L = Milligrams per liter



CLIENT: PDC
LOGGED BY: Billy Morrow
PROJECT MANAGER: Andy Sagen
DRILLING CONTRACTOR: Tasman
DRILLING EQUIPMENT: Hand Auger
DRILL BIT SIZE (INCHES): 2.875
DATE STARTED - COMPLETED: 4/3/2025 - 4/3/2025
TOTAL WELL DEPTH (FT. BGS): 8
DEPTH TO WATER (FT. BGS): 6 ▼

MDM 33-14 Flowline
BORING ID: BH01
LOCATION: S of BH02
LATITUDE (NAD 83): 40.137144
LONGITUDE (NAD 83): -104.968503
GROUND ELEVATION (FT. AMSL):
ABANDONMENT METHOD: Native

4725 Independence St.
Wheat Ridge, CO 80033



Drilling / Sample Method:

- Macro-Core
- Hand Auger
- Expendable Well Tip
- HydroPunch Groundwater Sampler

Laboratory Sample Types:

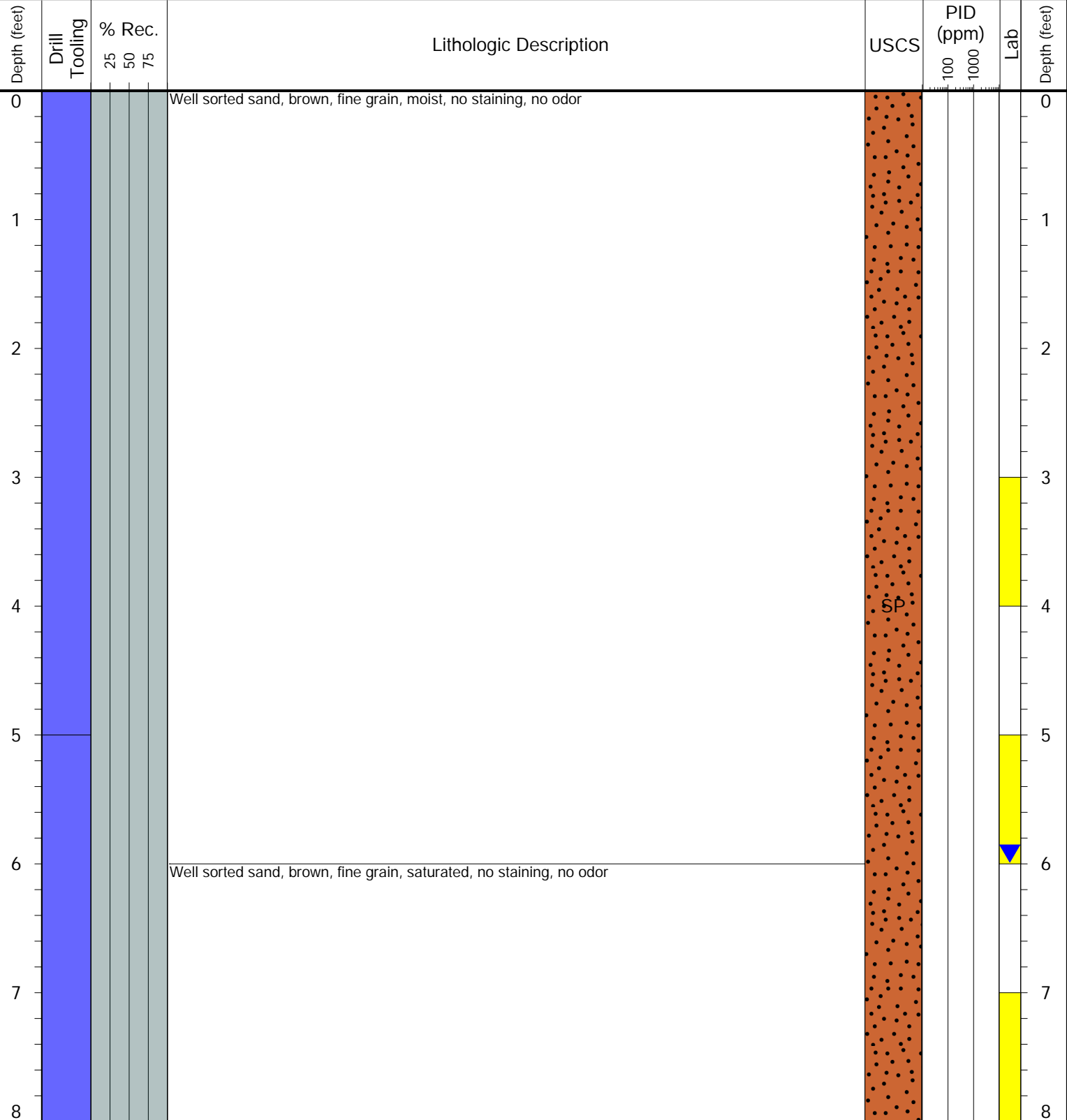
- Geotechnical Lab
- Analytical Chemistry Lab
- Geotechnical & Analytical Chemistry Lab



CLIENT: PDC
LOGGED BY: Billy Morrow
PROJECT MANAGER: Andy Sagen
DRILLING CONTRACTOR: Tasman
DRILLING EQUIPMENT: Hand Auger
DRILL BIT SIZE (INCHES): 2.875
DATE STARTED - COMPLETED: 4/3/2025 - 4/3/2025
TOTAL WELL DEPTH (FT. BGS): 8
DEPTH TO WATER (FT. BGS): 6 ▼

MDM 33-14 Flowline
BORING ID: BH02
LOCATION: N of BH01
LATITUDE (NAD 83): 40.137186
LONGITUDE (NAD 83): -104.968503
GROUND ELEVATION (FT. AMSL):
ABANDONMENT METHOD: Native

4725 Independence St.
Wheat Ridge, CO 80033



Drilling / Sample Method:

- Macro-Core
- Hand Auger
- Expendable Well Tip
- HydroPunch Groundwater Sampler

Laboratory Sample Types:

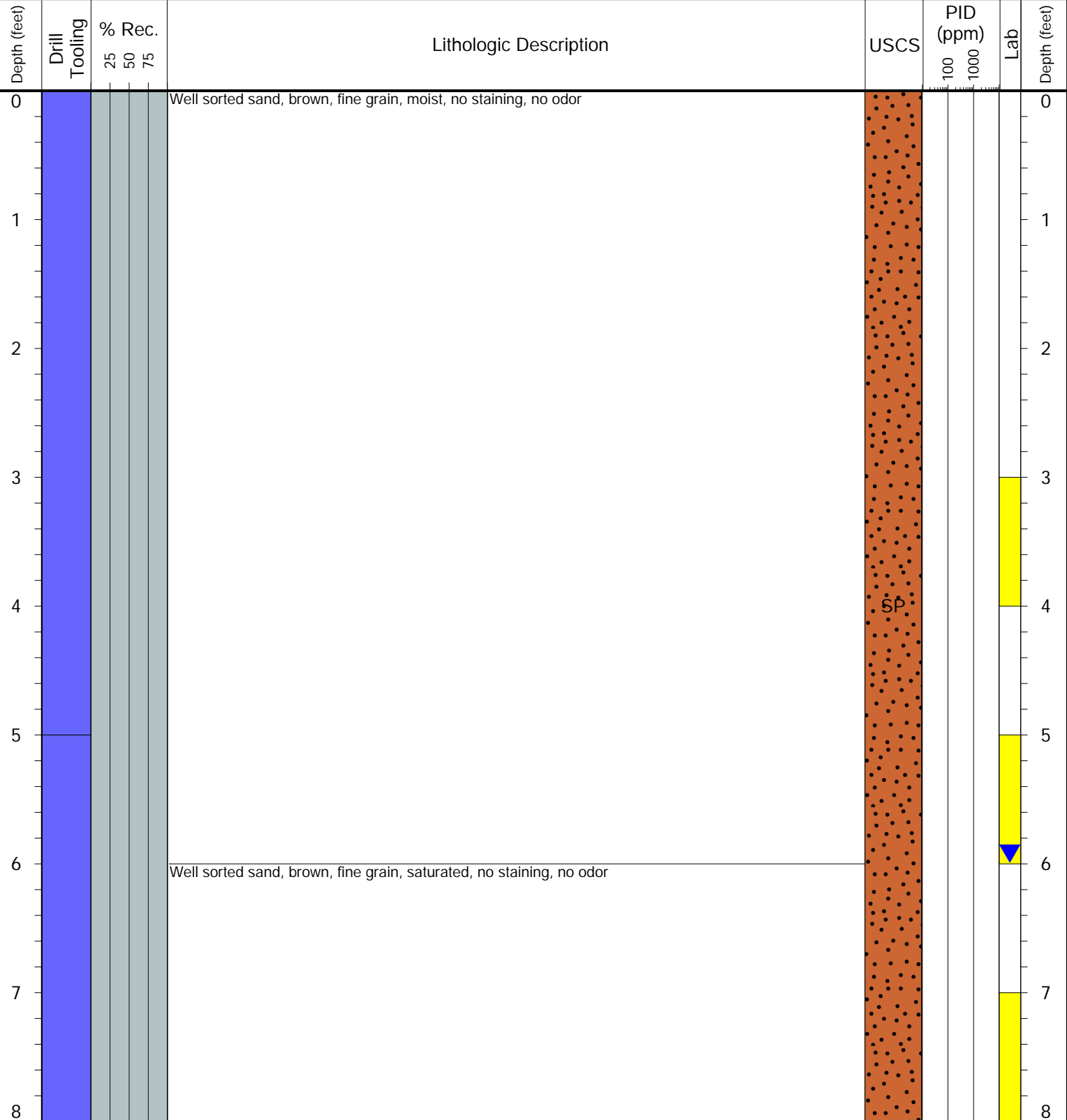
- Geotechnical Lab
- Analytical Chemistry Lab
- Geotechnical & Analytical Chemistry Lab



CLIENT: PDC
LOGGED BY: Billy Morrow
PROJECT MANAGER: Andy Sagen
DRILLING CONTRACTOR: Tasman
DRILLING EQUIPMENT: Hand Auger
DRILL BIT SIZE (INCHES): 2.875
DATE STARTED - COMPLETED: 4/3/2025 - 4/3/2025
TOTAL WELL DEPTH (FT. BGS): 8
DEPTH TO WATER (FT. BGS): 6 ▼

MDM 33-14 Flowline
BORING ID: BH03
LOCATION: S of BH01
LATITUDE (NAD 83): 40.137103
LONGITUDE (NAD 83): -104.968502
GROUND ELEVATION (FT. AMSL):
ABANDONMENT METHOD: Native

4725 Independence St.
Wheat Ridge, CO 80033



Drilling / Sample Method:

- Macro-Core
- Hand Auger
- Expendable Well Tip
- HydroPunch Groundwater Sampler

Laboratory Sample Types:

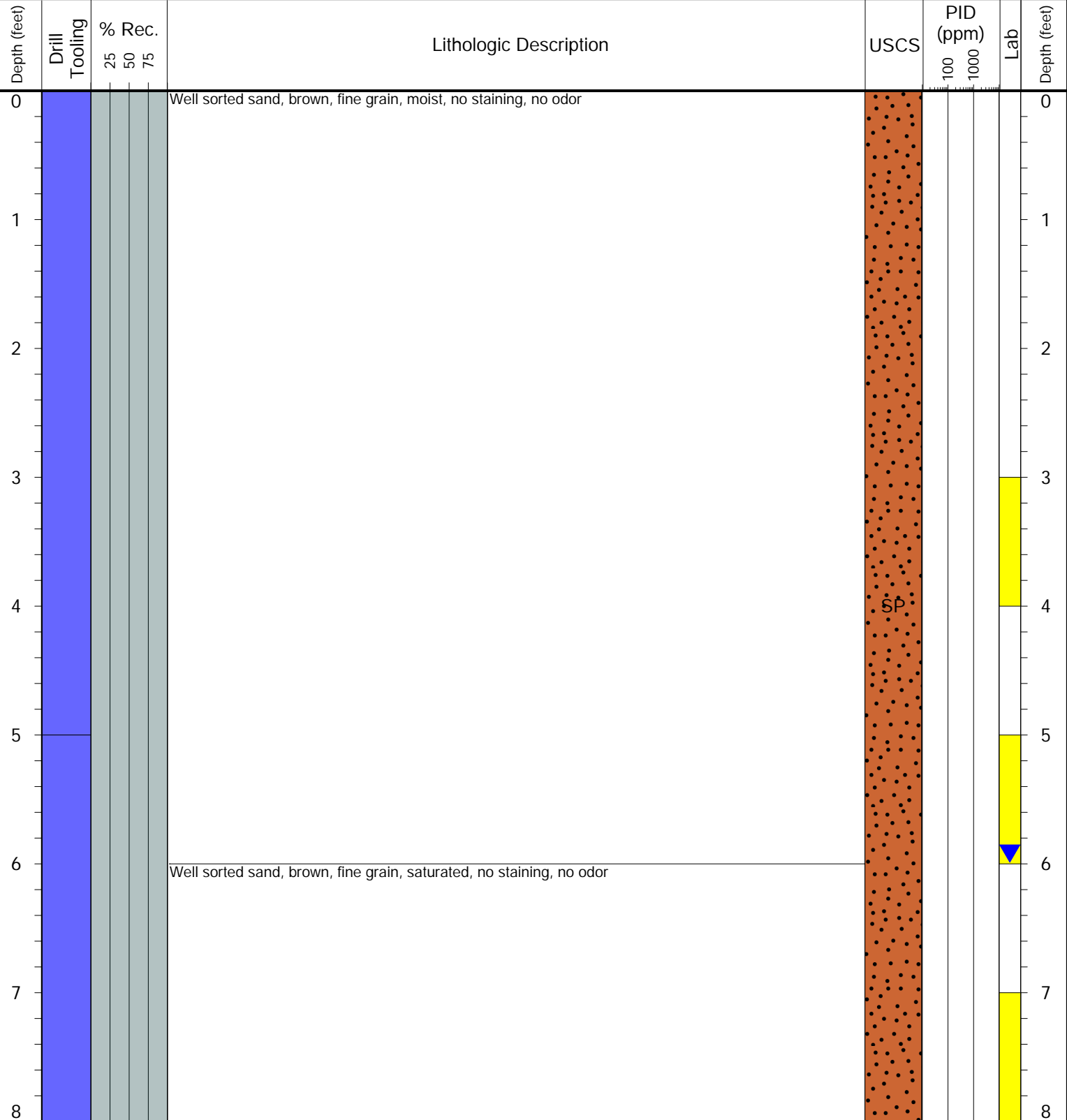
- Geotechnical Lab
- Analytical Chemistry Lab
- Geotechnical & Analytical Chemistry Lab



CLIENT: PDC
LOGGED BY: Billy Morrow
PROJECT MANAGER: Andy Sagen
DRILLING CONTRACTOR: Tasman
DRILLING EQUIPMENT: Hand Auger
DRILL BIT SIZE (INCHES): 2.875
DATE STARTED - COMPLETED: 4/3/2025 - 4/3/2025
TOTAL WELL DEPTH (FT. BGS): 8
DEPTH TO WATER (FT. BGS): 6 ▼

MDM 33-14 Flowline
BORING ID: BH04
LOCATION: W of BH01
LATITUDE (NAD 83): 40.137145
LONGITUDE (NAD 83): -104.968556
GROUND ELEVATION (FT. AMSL):
ABANDONMENT METHOD: Native

4725 Independence St.
Wheat Ridge, CO 80033



Drilling / Sample Method:

- Macro-Core
- Hand Auger
- Expendable Well Tip
- HydroPunch Groundwater Sampler

Laboratory Sample Types:

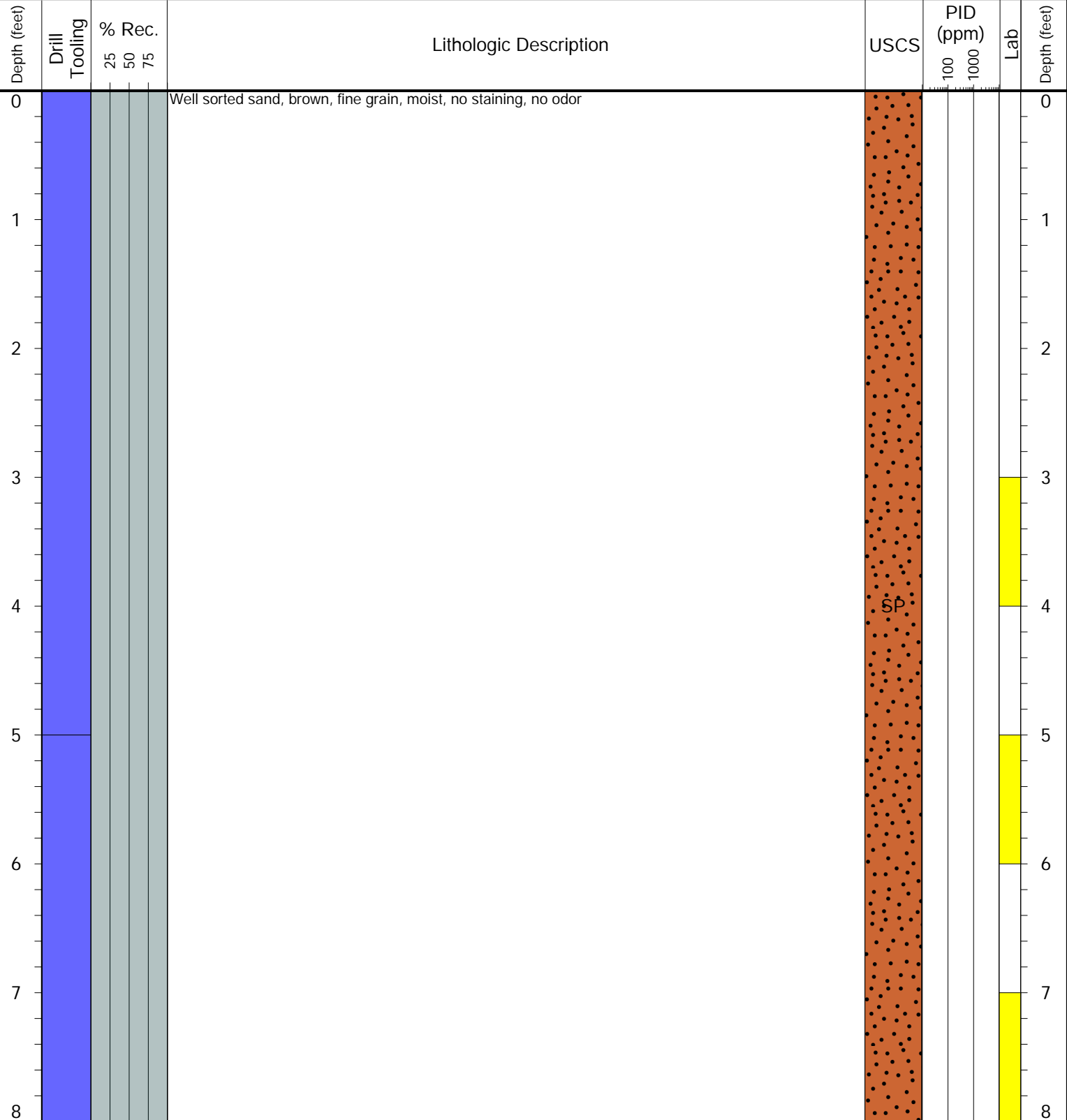
- Geotechnical Lab
- Analytical Chemistry Lab
- Geotechnical & Analytical Chemistry Lab



CLIENT: PDC
LOGGED BY: Billy Morrow
PROJECT MANAGER: Andy Sagen
DRILLING CONTRACTOR: Tasman
DRILLING EQUIPMENT: Hand Auger
DRILL BIT SIZE (INCHES): 2.875
DATE STARTED - COMPLETED: 4/3/2025 - 4/3/2025
TOTAL WELL DEPTH (FT. BGS): 8
DEPTH TO WATER (FT. BGS): Not encountered

MDM 33-14 Flowline
BORING ID: BH05
LOCATION: E of BH01
LATITUDE (NAD 83): 40.137144
LONGITUDE (NAD 83): -104.968449
GROUND ELEVATION (FT. AMSL):
ABANDONMENT METHOD: Native

4725 Independence St.
Wheat Ridge, CO 80033



Drilling / Sample Method:

- Macro-Core
- Hand Auger
- Expendable Well Tip
- HydroPunch Groundwater Sampler

Laboratory Sample Types:

- Geotechnical Lab
- Analytical Chemistry Lab
- Geotechnical & Analytical Chemistry Lab



6855 W. 119th Ave.
Broomfield, CO 80020

CLIENT: PDC Energy, Inc.

LOGGED BY: S. Bousquet

PROJECT MANAGER: B. Nelson

DRILLING CONTRACTOR: Tasman

DRILLING EQUIPMENT: Hand Auger

DRILL BIT SIZE (INCHES): 3.25

DATE STARTED - COMPLETED: 10/17/24-10/17/24

TOTAL WELL DEPTH (FT. BGS): 5

DEPTH WATER ENCOUNTERED (FT. BGS): 3 ▼

MDM 33-14 Flowline

BORING / WELL ID: BKG01

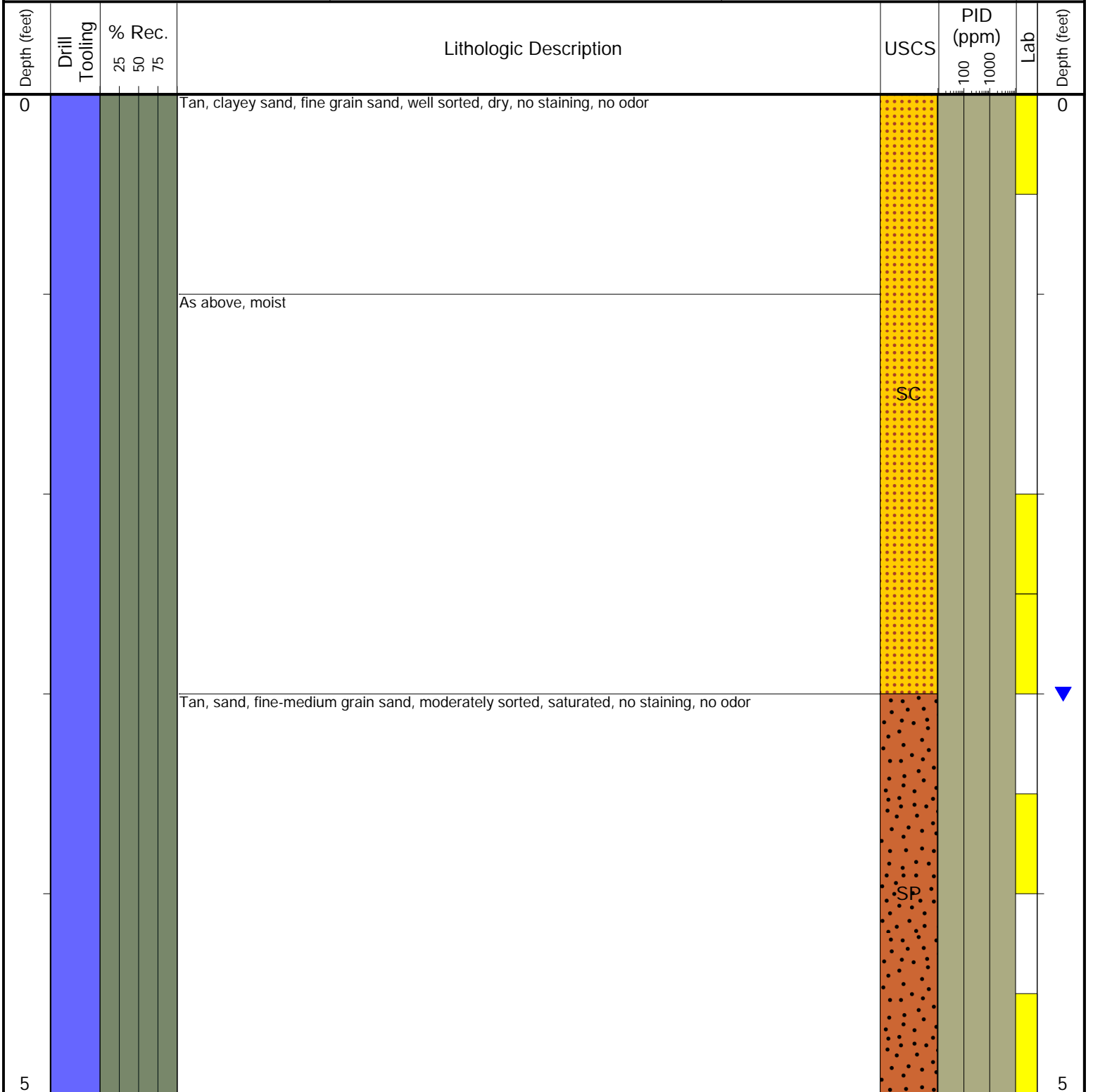
LOCATION: Weld County, Colorado

Latitude (NAD 83): 40.137106

Longitude (NAD 83): -104.968146

GROUND ELEVATION (FT. AMSL): NM

ABANDONMENT METHOD: Native Material



Drilling / Sample Method:

- Macro-Core
- Hand Auger
- Expendable Well Tip
- HydroPunch Groundwater Sampler

Laboratory Sample Types:

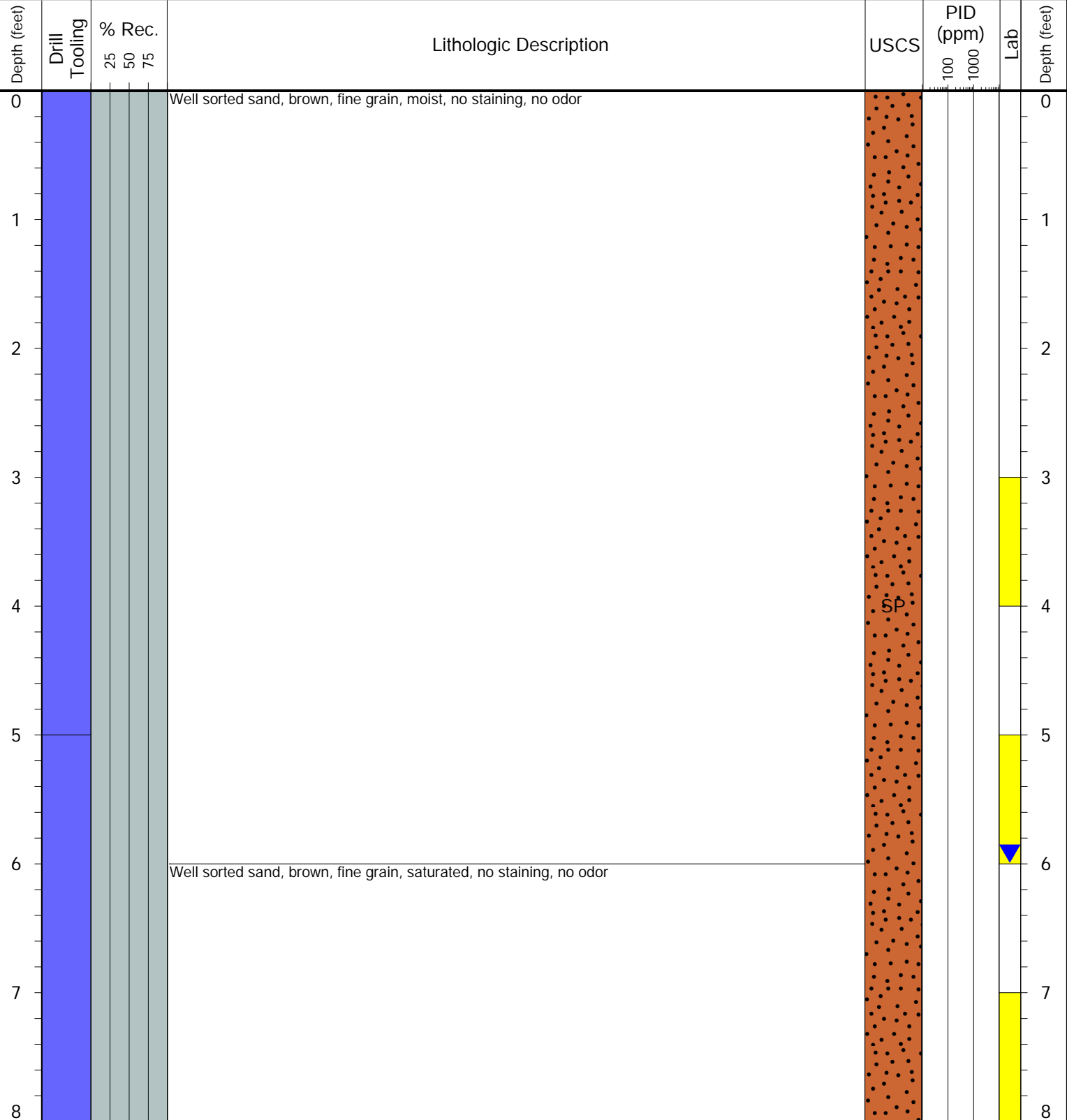
- Geotechnical Lab
- Analytical Chemistry Lab
- Geotechnical & Analytical Chemistry Lab



CLIENT: PDC
LOGGED BY: Billy Morrow
PROJECT MANAGER: Andy Sagen
DRILLING CONTRACTOR: Tasman
DRILLING EQUIPMENT: Hand Auger
DRILL BIT SIZE (INCHES): 2.875
DATE STARTED - COMPLETED: 4/3/2025 - 4/3/2025
TOTAL WELL DEPTH (FT. BGS): 8
DEPTH TO WATER (FT. BGS): 6 ▼

MDM 33-14 Flowline
BORING ID: BKG02
LOCATION: W of BKG06
LATITUDE (NAD 83): 40.137412
LONGITUDE (NAD 83): -104.968654
GROUND ELEVATION (FT. AMSL):
ABANDONMENT METHOD: Native

4725 Independence St.
Wheat Ridge, CO 80033



Drilling / Sample Method:

- Macro-Core
- Hand Auger
- Expendable Well Tip
- HydroPunch Groundwater Sampler

Laboratory Sample Types:

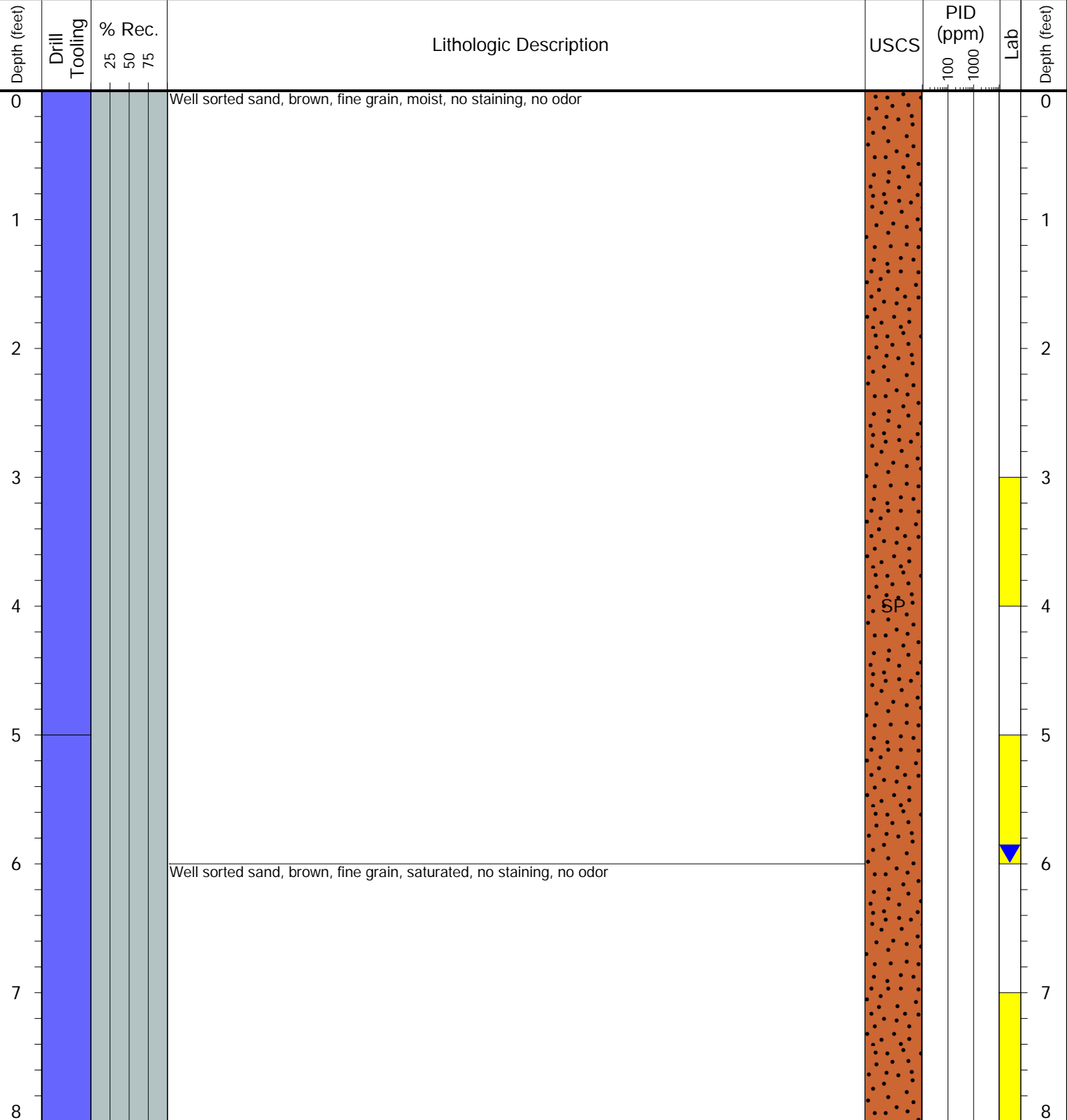
- Geotechnical Lab
- Analytical Chemistry Lab
- Geotechnical & Analytical Chemistry Lab



CLIENT: PDC
LOGGED BY: Billy Morrow
PROJECT MANAGER: Andy Sagen
DRILLING CONTRACTOR: Tasman
DRILLING EQUIPMENT: Hand Auger
DRILL BIT SIZE (INCHES): 2.875
DATE STARTED - COMPLETED: 4/3/2025 - 4/3/2025
TOTAL WELL DEPTH (FT. BGS): 8
DEPTH TO WATER (FT. BGS): 6 ▼

MDM 33-14 Flowline
BORING ID: BKG03
LOCATION: SW of BKG02
LATITUDE (NAD 83): 40.137260
LONGITUDE (NAD 83): -104.968940
GROUND ELEVATION (FT. AMSL):
ABANDONMENT METHOD: Native

4725 Independence St.
Wheat Ridge, CO 80033



Drilling / Sample Method:

- Macro-Core
- Hand Auger
- Expendable Well Tip
- HydroPunch Groundwater Sampler

Laboratory Sample Types:

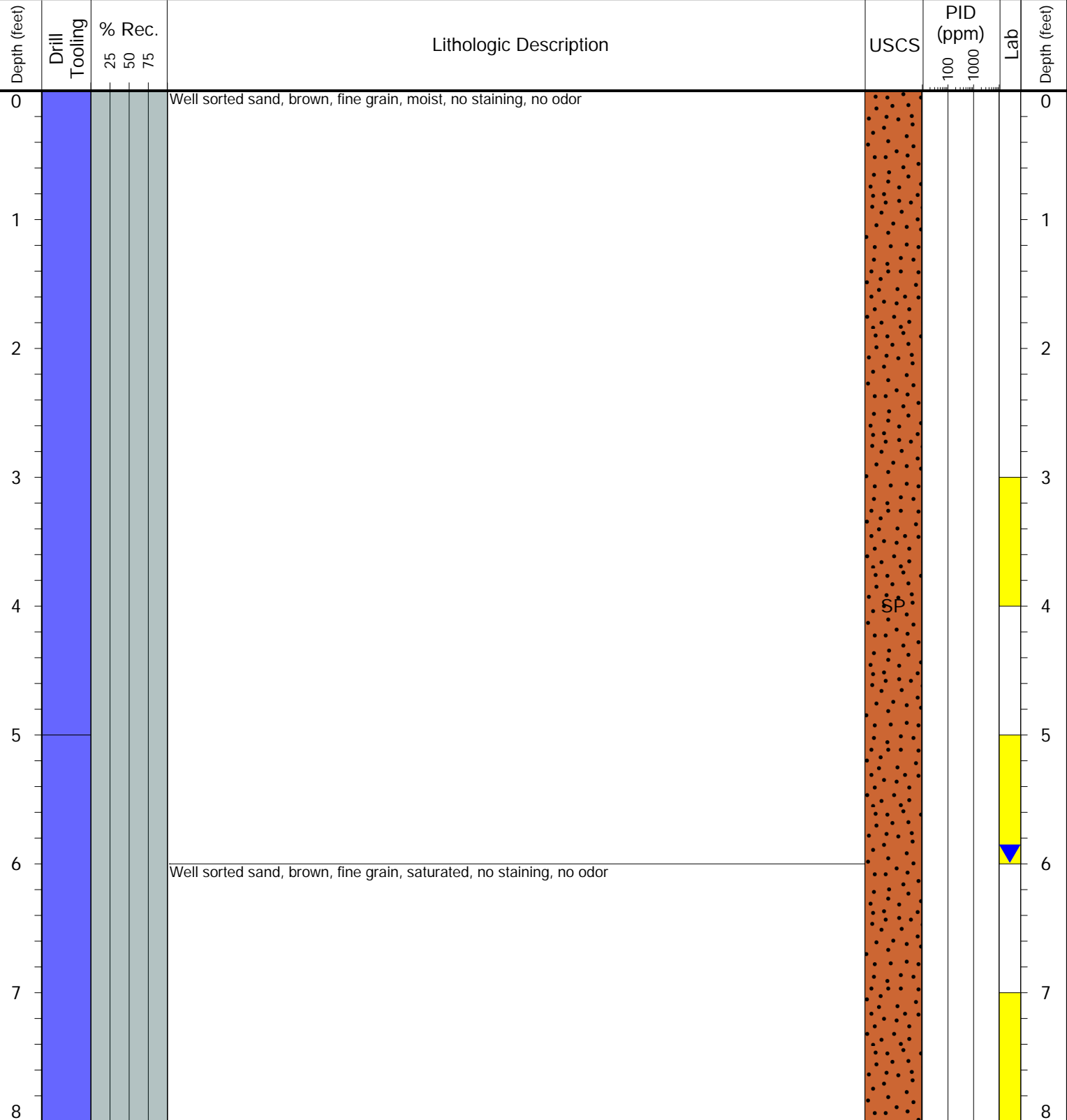
- Geotechnical Lab
- Analytical Chemistry Lab
- Geotechnical & Analytical Chemistry Lab



CLIENT: PDC
LOGGED BY: Billy Morrow
PROJECT MANAGER: Andy Sagen
DRILLING CONTRACTOR: Tasman
DRILLING EQUIPMENT: Hand Auger
DRILL BIT SIZE (INCHES): 2.875
DATE STARTED - COMPLETED: 4/3/2025 - 4/3/2025
TOTAL WELL DEPTH (FT. BGS): 8
DEPTH TO WATER (FT. BGS): 6 ▼

MDM 33-14 Flowline
BORING ID: BKG04
LOCATION: S of BKG03
LATITUDE (NAD 83): 40.136946
LONGITUDE (NAD 83): -104.968822
GROUND ELEVATION (FT. AMSL):
ABANDONMENT METHOD: Native

4725 Independence St.
Wheat Ridge, CO 80033



Drilling / Sample Method:

- Macro-Core
- Hand Auger
- Expendable Well Tip
- HydroPunch Groundwater Sampler

Laboratory Sample Types:

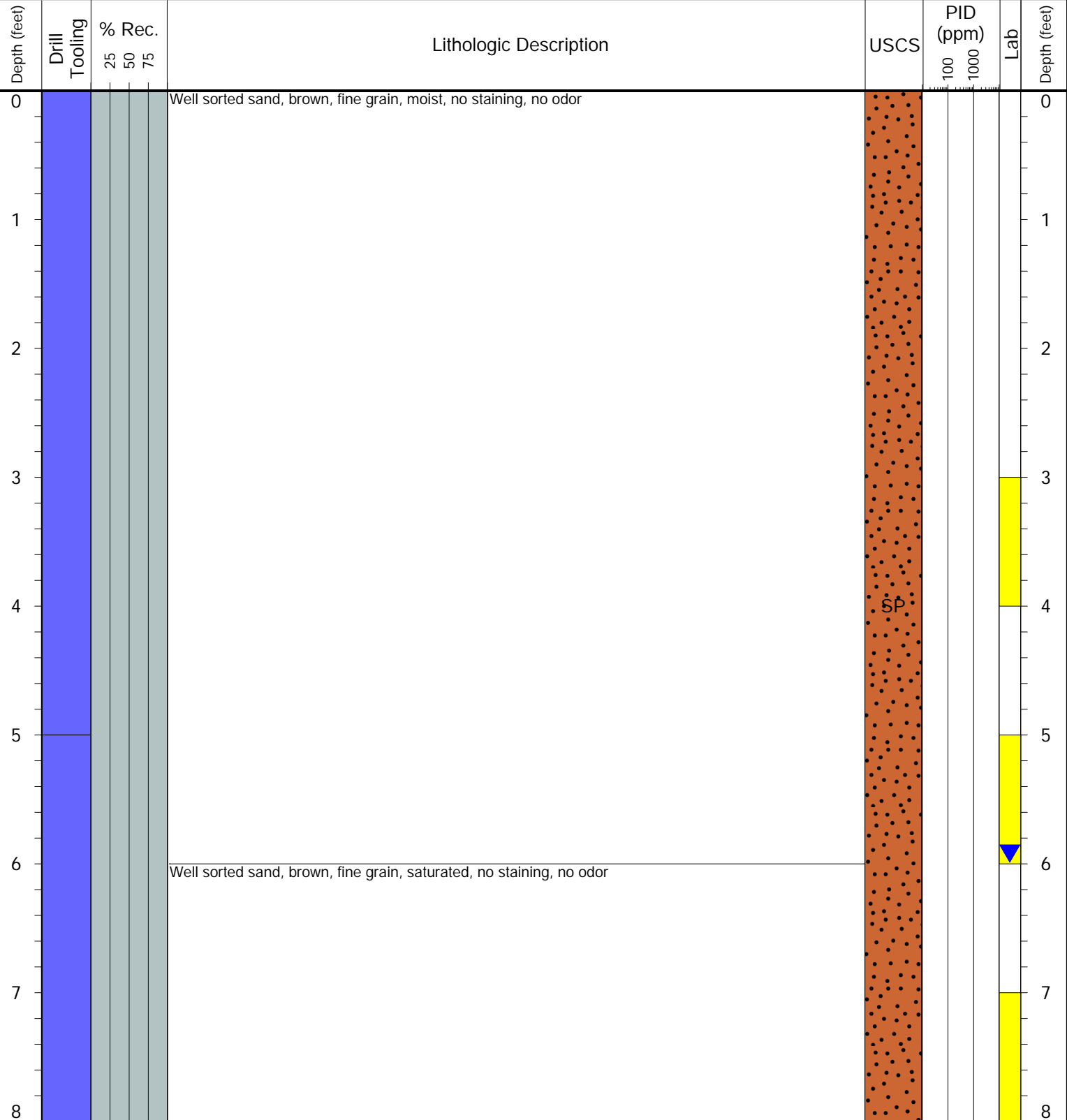
- Geotechnical Lab
- Analytical Chemistry Lab
- Geotechnical & Analytical Chemistry Lab



CLIENT: PDC
LOGGED BY: Billy Morrow
PROJECT MANAGER: Andy Sagen
DRILLING CONTRACTOR: Tasman
DRILLING EQUIPMENT: Hand Auger
DRILL BIT SIZE (INCHES): 2.875
DATE STARTED - COMPLETED: 4/3/2025 - 4/3/2025
TOTAL WELL DEPTH (FT. BGS): 8
DEPTH TO WATER (FT. BGS): 6 ▼

MDM 33-14 Flowline
BORING ID: BKG05
LOCATION: E of BKG04
LATITUDE (NAD 83): 40.136824
LONGITUDE (NAD 83): -104.968426
GROUND ELEVATION (FT. AMSL):
ABANDONMENT METHOD: Native

4725 Independence St.
Wheat Ridge, CO 80033



Drilling / Sample Method:

- Macro-Core
- Hand Auger
- Expendable Well Tip
- HydroPunch Groundwater Sampler

Laboratory Sample Types:

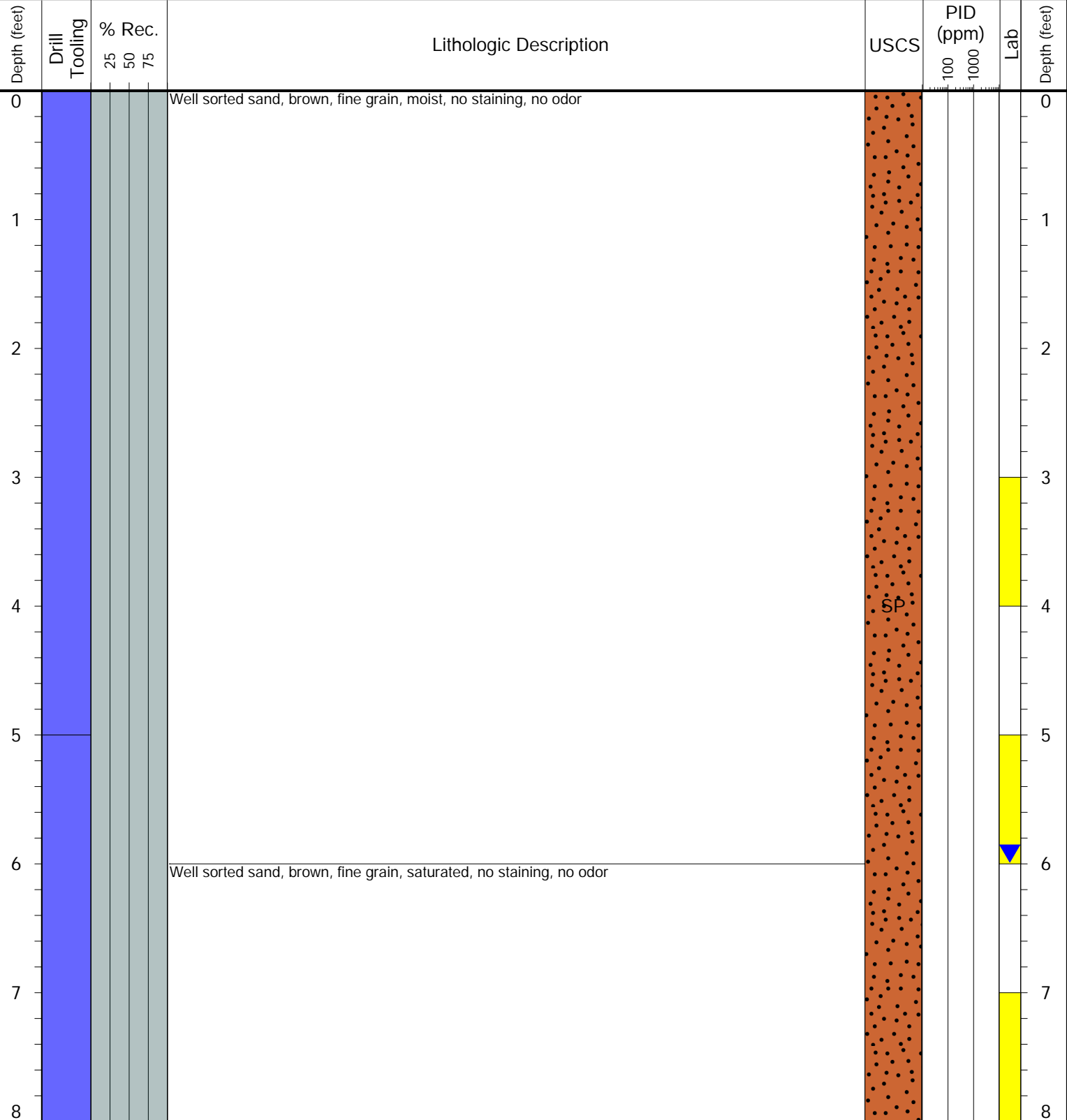
- Geotechnical Lab
- Analytical Chemistry Lab
- Geotechnical & Analytical Chemistry Lab



CLIENT: PDC
LOGGED BY: Billy Morrow
PROJECT MANAGER: Andy Sagen
DRILLING CONTRACTOR: Tasman
DRILLING EQUIPMENT: Hand Auger
DRILL BIT SIZE (INCHES): 2.875
DATE STARTED - COMPLETED: 4/3/2025 - 4/3/2025
TOTAL WELL DEPTH (FT. BGS): 8
DEPTH TO WATER (FT. BGS): 6 ▼

MDM 33-14 Flowline
BORING ID: BKG06
LOCATION: E of BKG02
LATITUDE (NAD 83): 40.137364
LONGITUDE (NAD 83): -104.968182
GROUND ELEVATION (FT. AMSL):
ABANDONMENT METHOD: Native

4725 Independence St.
Wheat Ridge, CO 80033



Drilling / Sample Method:

- Macro-Core
- Hand Auger
- Expendable Well Tip
- HydroPunch Groundwater Sampler

Laboratory Sample Types:

- Geotechnical Lab
- Analytical Chemistry Lab
- Geotechnical & Analytical Chemistry Lab