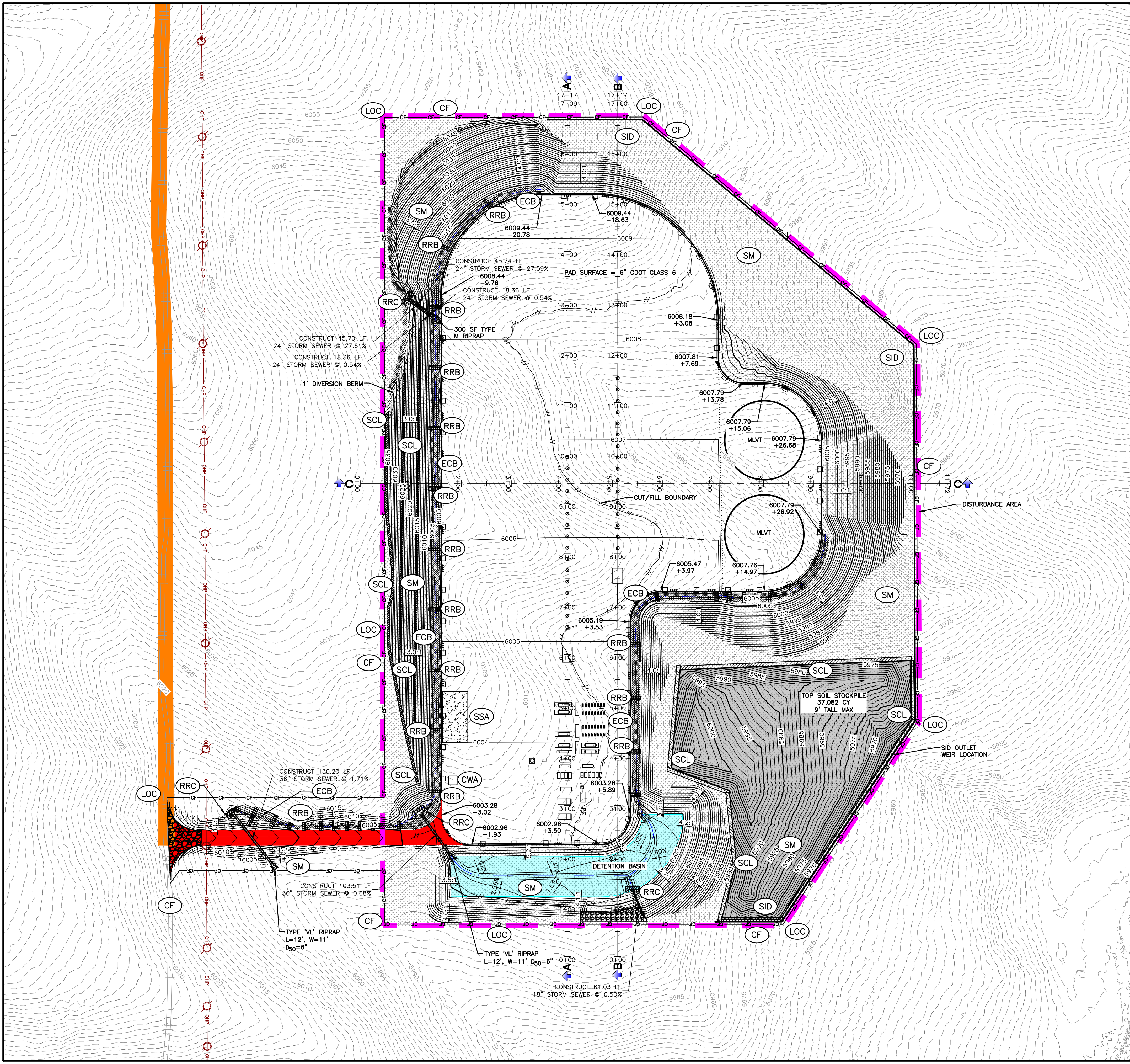


L:\Engineering\222240_Citizen - State Long Sunlight Construction Drawings\CDP\222240 - ECP Drilling.dwg, 12/11/2024, 11:07:52 AM, MJK, RYNEARSON

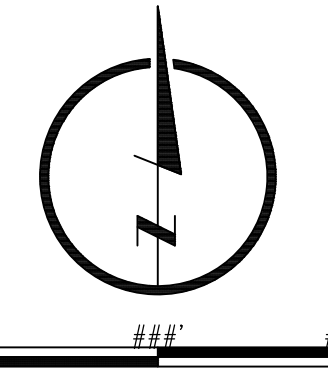


LEGEND

- EXISTING ROAD
- WORKING PAD SURFACE
- LIMITS OF DISTURBANCE
- EXISTING OVERHEAD POWER
- EXISTING POWER POLE
- PROPOSED CUT/FILL BOUNDARY
- SOUND WALL
- ACCESS ROAD
- EXISTING ACCESS ROAD TO BE IMPROVED
- EXISTING CONTOUR LINE
- PROPOSED CONTOUR LINE
- GRADE BREAK
- TOPSOIL STOCKPILE
- BOTTOM OF POND

EROSION CONTROL LEGEND

- CF CONSTRUCTION FENCE
- ECB EROSION CONTROL BLANKET
- RRB REINFORCED ROCK BERM
- RRB FOR CULVERT PROTECTION
- SCL SEDIMENT CONTROL LOG
- SM SEEDING AND MULCHING
- SID SLOPE INTERCEPT DITCH
- SSA STABILIZED STAGING AREA
- VTC VEHICLE TRACKING CONTROL



LAMP RYNEARSON
 LAMPRYNEARSON.COM
 OMAHA, NEBRASKA
 14710 W. DODGE RD., STE. 100 (402) 486-2488
 NE AUTHORIZATION NO. - CA0150
 FORT COLLINS, COLORADO
 4715 INNOVATION DR., STE. 100 (970) 225-0342
 KANSAS CITY, MISSOURI
 9001 STATE LINE RD., STE. 200 (816) 361-0440
 MO AUTH. NO. - E-2013011903 | LS-2019043127

CIVITAS
 CRESTONE PEAK RESOURCES OPERATING LLC

PRELIMINARY
 NOT RELEASED FOR CONSTRUCTION
 IAP

APPROXIMATE DRILLING PHASE EARTHWORK CALCULATIONS:

SITE AREA (DISTURBANCE AREA)	35.21 AC
ON-SITE RAW QUANTITIES:	
EXCAVATION	193,237 CY (CUT)
EMBANKMENT FILL	193,237 CY (FILL)
CONSTRUCTION EXPORT:	
6" GRAVEL	12,609 CY
STOCKPILE:	
TOPSOIL(11" STRIPPING)	37,082 CY
TOTAL IMPORT/EXPORT:	
EXPORT	0 CY

ACREAGE BREAKDOWN

ACREAGE	DESCRIPTION
35.21 AC	OIL AND GAS AREA DURING CONSTRUCTION
15.60 AC	PROPOSED WORKING PAD SURFACE
0.45 AC	ACCESS ROAD DISTURBED AREA
14.11 AC	EXISTING ACCESS ROAD TO BE IMPROVED
49.77 AC	TOTAL DISTURBANCE

WELLS

17	STATE SUNLIGHT EAST 5-65 22-23-24 1AH	1	STATE SUNLIGHT WEST 5-65 22-21-20-19 1AH
18	STATE SUNLIGHT EAST 5-65 22-23-24 1BH	2	STATE SUNLIGHT WEST 5-65 22-21-20-19 1BH
19	STATE SUNLIGHT EAST 5-65 22-23-24 2AH	3	STATE SUNLIGHT WEST 5-65 22-21-20-19 2AH
20	STATE SUNLIGHT EAST 5-65 22-23-24 2BH	4	STATE SUNLIGHT WEST 5-65 22-21-20-19 2BH
21	STATE SUNLIGHT EAST 5-65 22-23-24 3AH	5	STATE SUNLIGHT WEST 5-65 22-21-20-19 3AH
22	STATE SUNLIGHT EAST 5-65 22-23-24 3BH	6	STATE SUNLIGHT WEST 5-65 22-21-20-19 3BH
23	STATE SUNLIGHT EAST 5-65 22-23-24 4AH	7	STATE SUNLIGHT WEST 5-65 22-21-20-19 4AH
24	STATE SUNLIGHT EAST 5-65 22-23-24 4BH	8	STATE SUNLIGHT WEST 5-65 22-21-20-19 4BH
25	STATE LONG EAST 5-65 27-26-25 1AH	9	STATE LONG WEST 5-65 27-28-29-30 1AH
26	STATE LONG EAST 5-65 27-26-25 1BH	10	STATE LONG WEST 5-65 27-28-29-30 1BH
27	STATE LONG EAST 5-65 27-26-25 2AH	11	STATE LONG WEST 5-65 27-28-29-30 2AH
28	STATE LONG EAST 5-65 27-26-25 2BH	12	STATE LONG WEST 5-65 27-28-29-30 2BH
29	STATE LONG EAST 5-65 27-26-25 3AH	13	STATE LONG WEST 5-65 27-28-29-30 3AH
30	STATE LONG EAST 5-65 27-26-25 3BH	14	STATE LONG WEST 5-65 27-28-29-30 3BH
31	STATE LONG EAST 5-65 27-26-25 4AH	15	STATE LONG WEST 5-65 27-28-29-30 4AH
32	STATE LONG EAST 5-65 27-26-25 4BH	16	STATE LONG WEST 5-65 27-28-29-30 4BH

CONSTRUCTION LAYOUT
 DRAWING 1
 STATE SUNLIGHT/LONG
 ARAPAHOE COUNTY, COLORADO

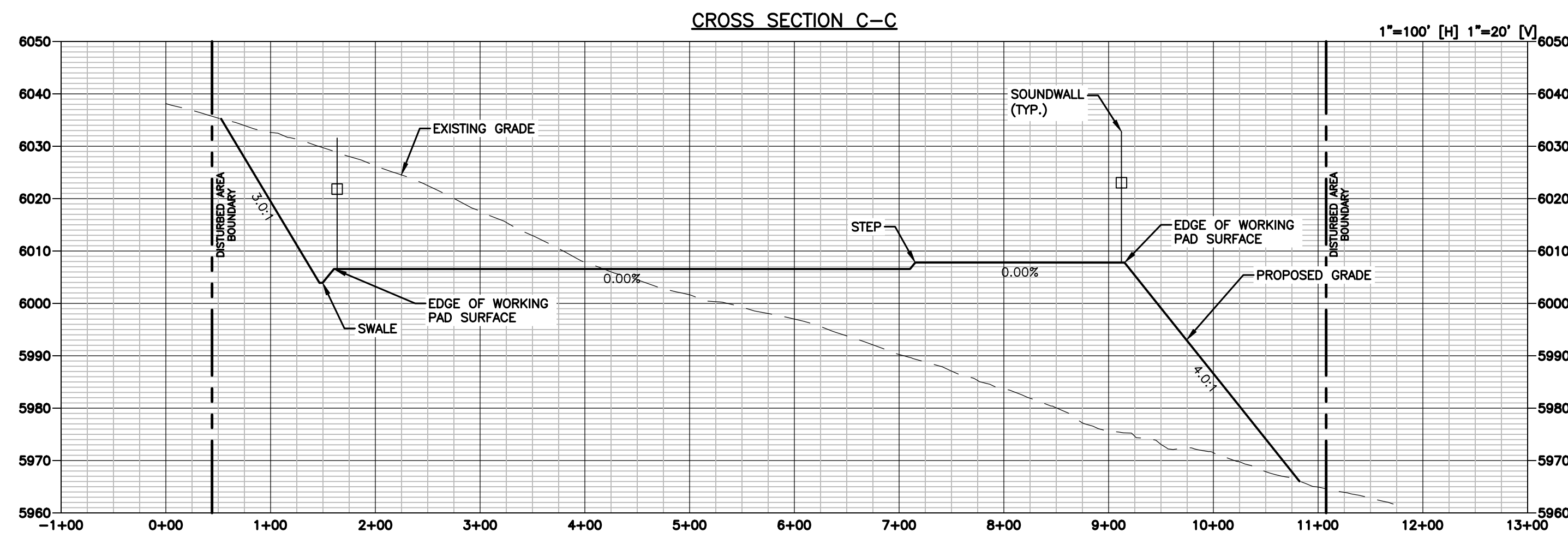
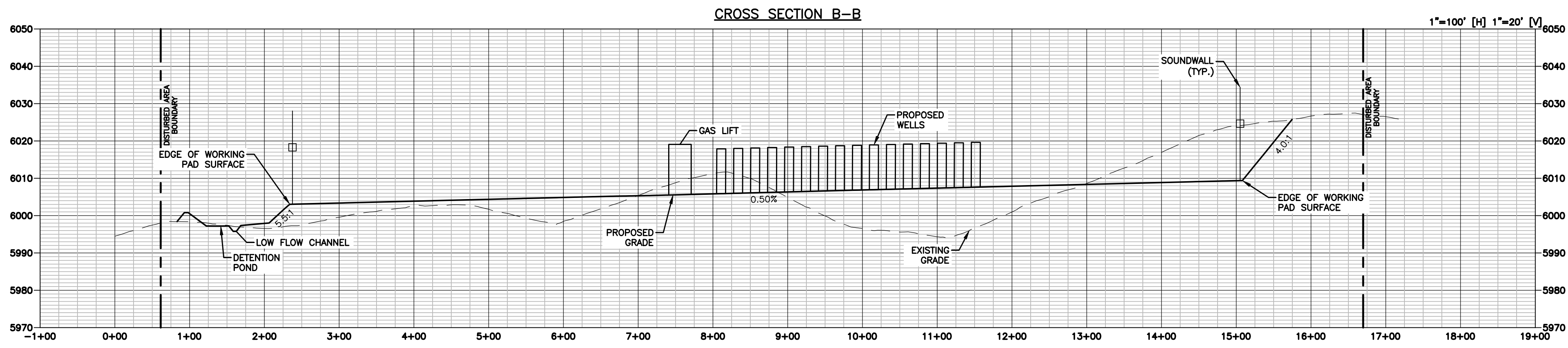
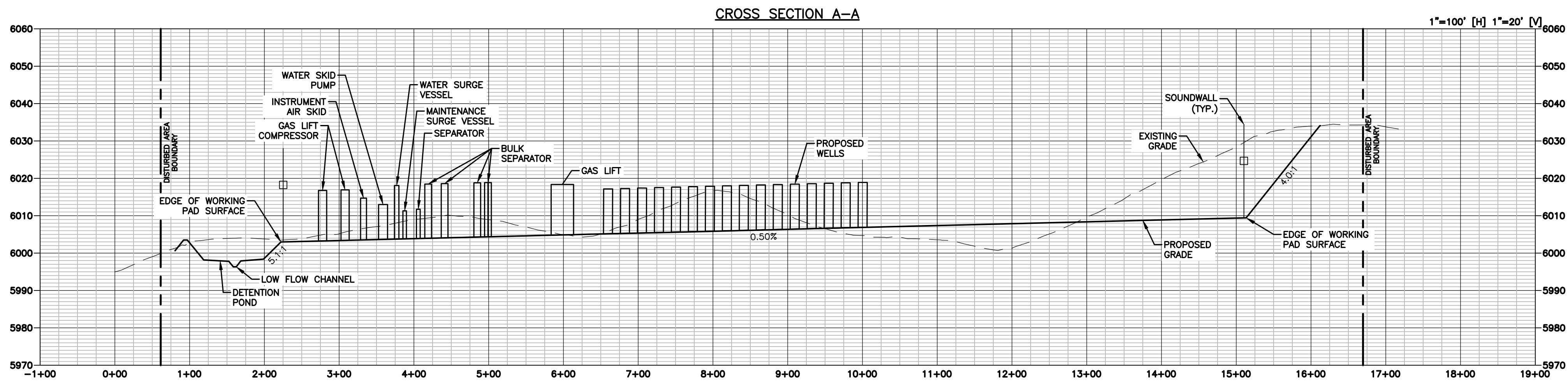
811
 Know what's below.
 Call before you dig.

REVISIONS

NO.	DATE	DESCRIPTION

DESIGNER / DRAFTER
 MJB
 DATE
 12/11/2024
PROJECT NUMBER
 0222040
BOOK AND PAGE

SHEET
 2 OF 10



PRELIMINARY

NOT RELEASED FOR CONSTRUCTION
 IMAP

CONSTRUCTION LAYOUT
 DRAWING 2

STATE SUNLIGHT/LONG
 ARAPAHOE COUNTY, COLORADO

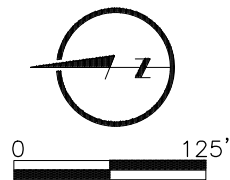
811
 Know what's below.
 Call before you dig.

REVISIONS

NO.	DATE	DESCRIPTION

DESIGNER / DRAFTER
 MWB
 DATE
 12/11/2024
 PROJECT NUMBER
 0222040
 BOOK AND PAGE
 1 OF 1

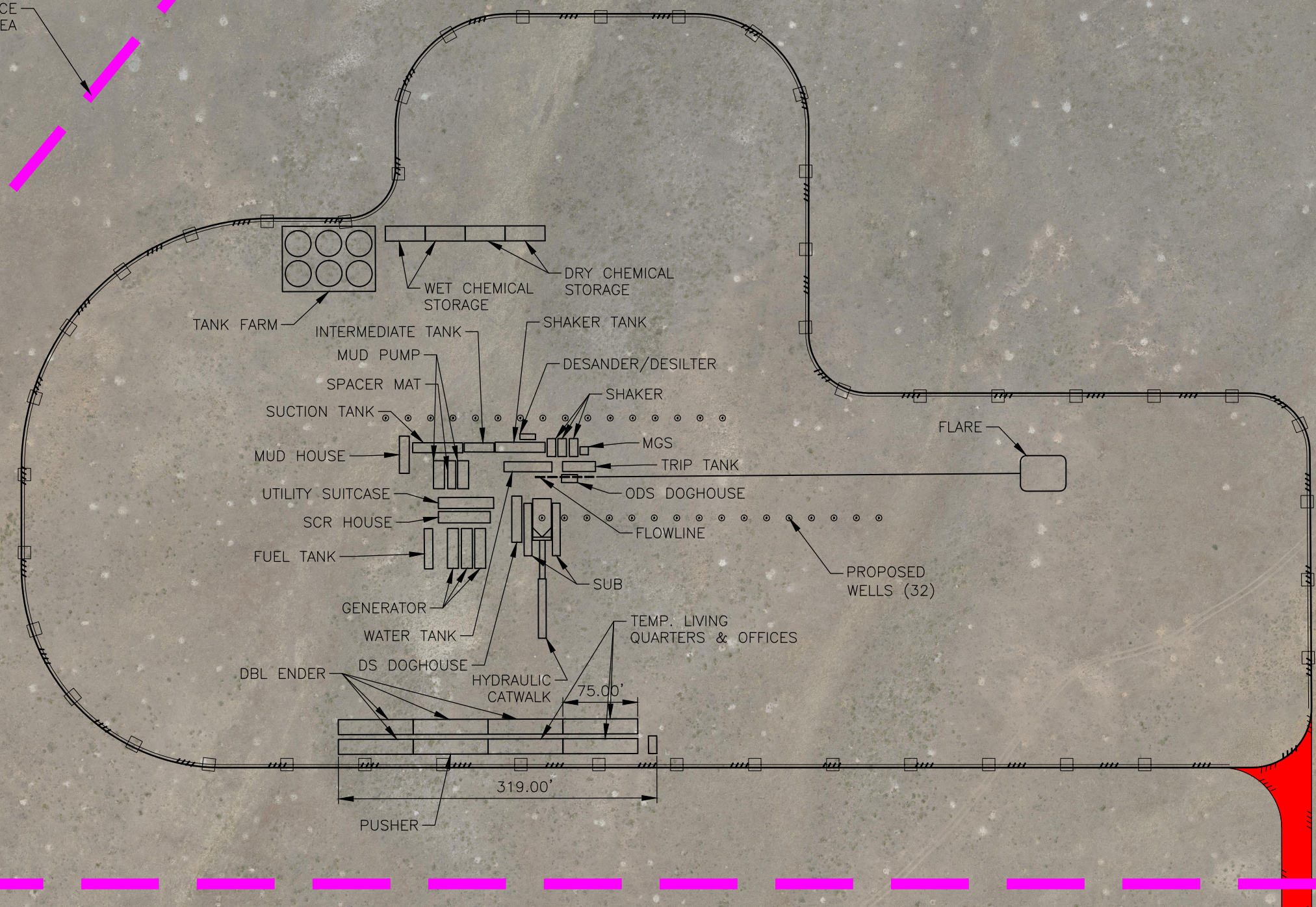
L:\Engineering\0222040 Citrus - State Long\Drawings\CONSTRUCTION DRAWINGS\0222040 - ECP DRILLING.dwg, 12/11/2024 11:07:05 AM, MJK BEAURE, LAMP RYNEARSON



LEGEND

- DISTURBANCE AREA
- WORKING PAD SURFACE
- OIL & GAS WELL
- PROPOSED SOUND WALL
- ACCESS ROAD

DISTURBANCE AREA



L:\Engineering\0222040_Civitas - State Long\DRAWINGS\CONSTRUCTION DRAWINGS\GDOP\0222040 - RIG LAYOUT.dwg, 12/11/2024 11:07:45 AM, MAX BEAUPRE, LAMP RYNEARSON

LAMP RYNEARSON

OMAHA, NEBRASKA
14110 W. DOUGLASS RD., STE. 100 (402) 498-2498
NE AUTH. NO.: CA0130
FORT COLLINS, COLORADO
4715 INNOVATION DR., STE. 100 (970) 226-0342
KANSAS CITY, MISSOURI
9001 STATE LINE RD., STE. 200 (816) 361-0440
MO AUTH. NO.: E-2013011903 | LS-2019043127

LAMPRYNEARSON.COM



DESIGNER / DRAFTER
JJI/MWB/ARL

REVIEWER
MAP

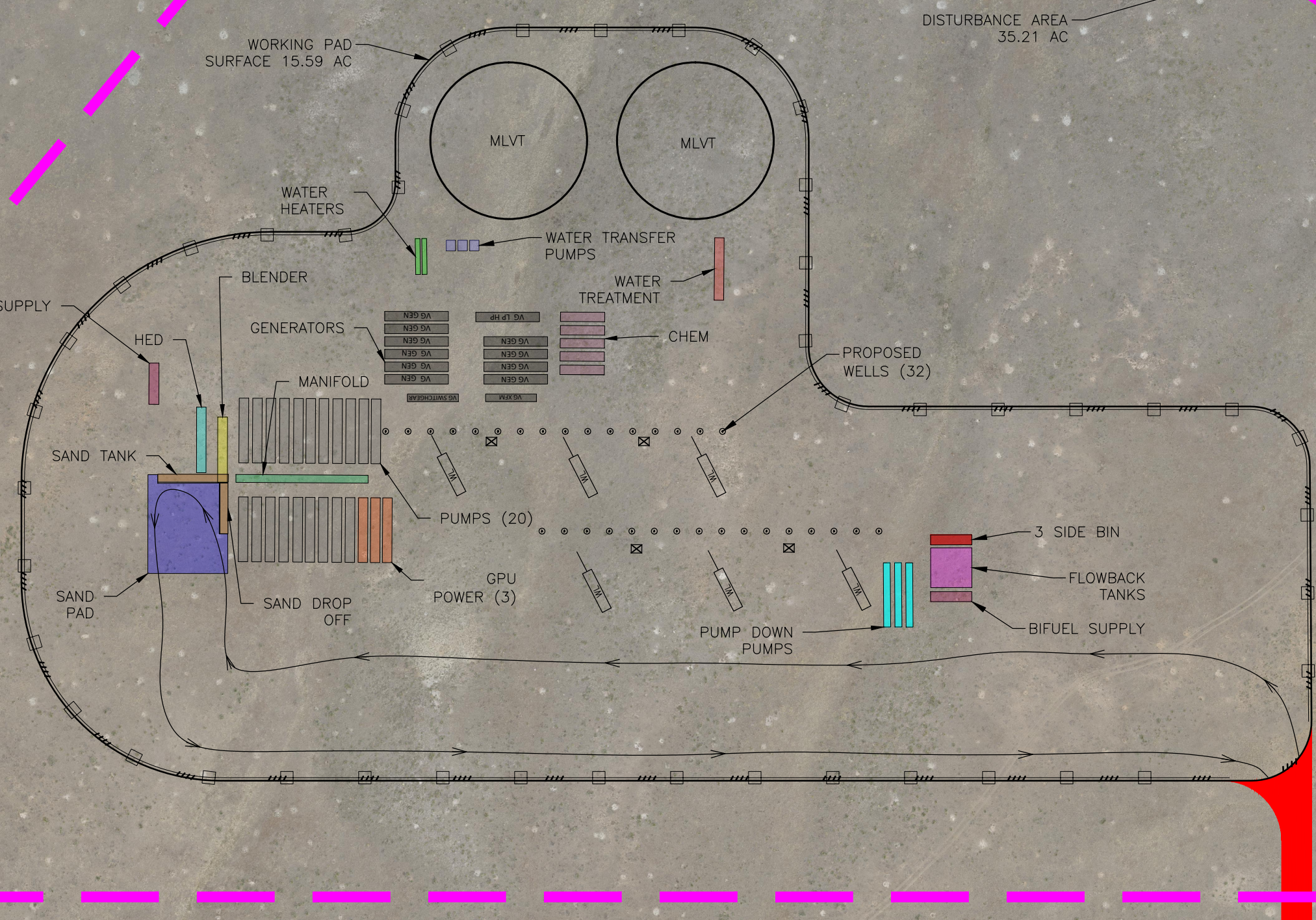
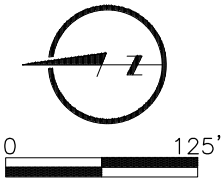
PROJECT NUMBER
0222040

DATE
12/11/2024

SURFACE LOCATION
S27 T5S R65W

BOOK AND PAGE
4 OF 10

STATE SUNLIGHT/LONG RIG LAYOUT DRAWING

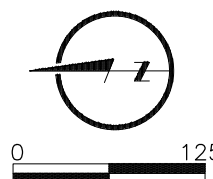


- LEGEND**
- DISTURBANCE AREA
 - WORKING PAD SURFACE
 - SOUND WALL
 - OIL & GAS WELL
 - TRAFFIC FLOW
 - WIRE LINE
 - WL CRANE LOCATIONS (VARIES)
 - SAND PAD
 - WATER TRANSFER PUMPS
 - BLENDER
 - CHEM
 - PUMPS
 - MANIFOLD
 - FLOWBACK TANK
 - BIFUEL FUEL SUPPLY
 - SAND TANKS
 - HED
 - GPU POWER
 - GENERATORS
 - PUMP DOWN PUMPS
 - WATER HEATER
 - WATER TREATMENT
 - 3 SIDE BIN



L:\Engineering\0222040_Civitas - State Long\DRAWINGS\CONSTRUCTION DRAWINGS\GDOP\0222040 - COMPLETION LAYOUT.dwg - 12/11/2024 1:08:27 AM, MAX BEAUPRE, LAMP RYNEARSON

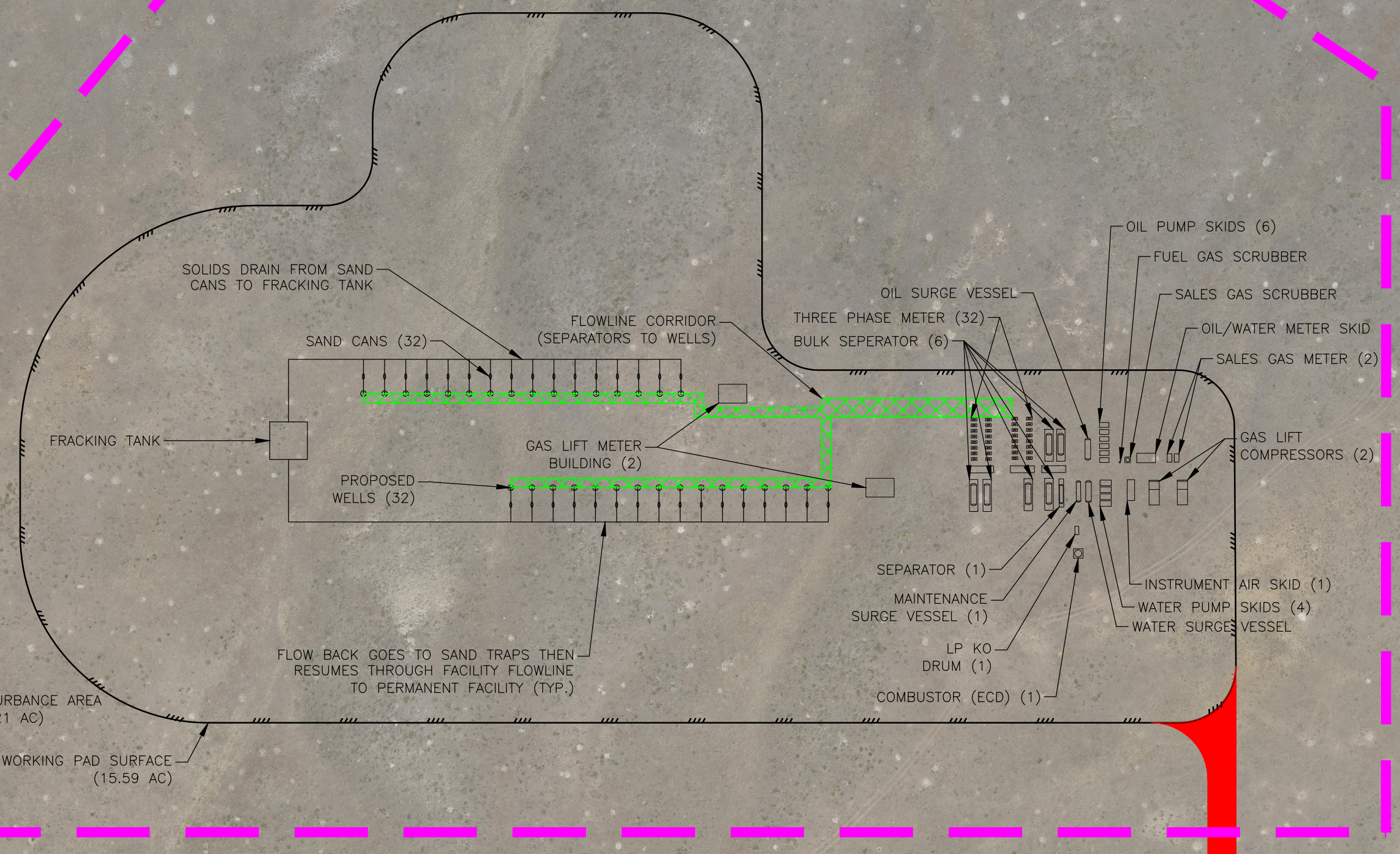
<p>LAMP RYNEARSON</p> <p>LAMPRYNEARSON.COM</p> <p>CRESTONE PEAK RESOURCES OPERATING LLC</p>	<p>OMAHA, NEBRASKA 14110 W. DOUGLAS RD., STE. 100 (402) 498-2498 NE AUTH. NO.: CA0130</p> <p>FORT COLLINS, COLORADO 4715 INNOVATION DR., STE. 100 (970) 226-0342</p> <p>KANSAS CITY, MISSOURI 9001 STATE LINE RD., STE. 200 (816) 361-0440 MO AUTH. NO.: E-2013011903 LS-2019043127</p>
	<p>DESIGNER / DRAFTER JJJ/MWB/ARL</p> <p>REVIEWER MAP</p> <p>PROJECT NUMBER 0222040</p> <p>DATE 12/11/2024</p> <p>SURFACE LOCATION S27 T5S R65W</p> <p>BOOK AND PAGE 5 OF 10</p>

STATE SUNLIGHT/LONG WELL COMPLETION EQUIPMENT LAYOUT



LEGEND

-  DISTURBANCE AREA
-  WORKING PAD SURFACE
-  OIL & GAS WELL
-  ACCESS ROAD
-  FLOWLINE CORRIDOR

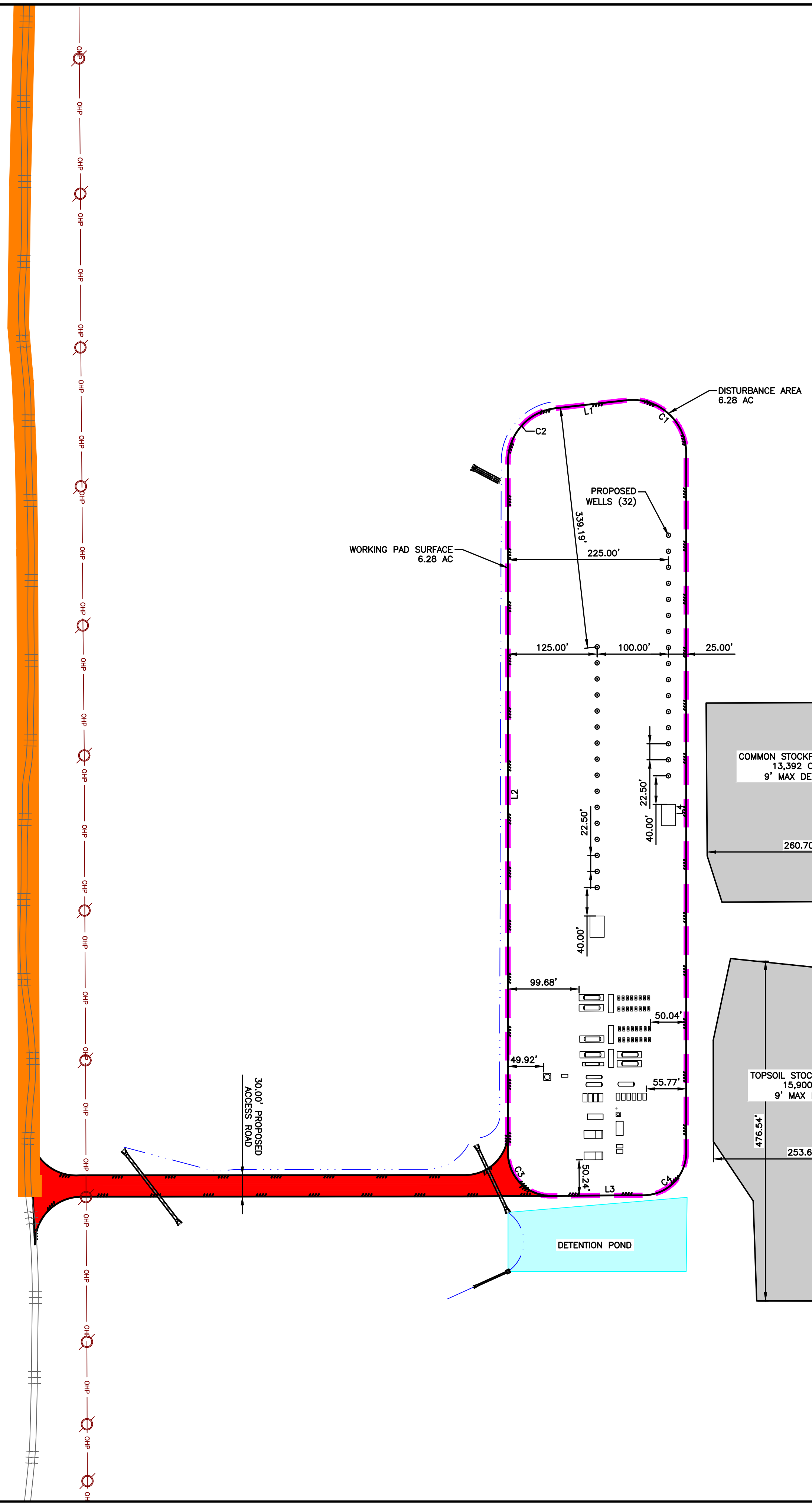


L:\Engineering\0222040 - State Long\DRAWINGS\CONSTRUCTION DRAWINGS\CGDP_0222040 - FLOWBACK EQUIPMENT LAYOUT.dwg, 12/11/2024, 11:09:14 AM, MAX BEAUPRE, LAMP RYNEARSON

 <p>LAMP RYNEARSON</p> <p>LAMP RYNEARSON.COM</p>	<p>OMAHA, NEBRASKA 14110 W. DOUGLAS RD., STE. 100 (402) 498-2498 NE AUTH. NO.: CA0130</p> <p>FORT COLLINS, COLORADO 4715 INNOVATION DR., STE. 100 (970) 226-0342</p> <p>KANSAS CITY, MISSOURI 9001 STATE LINE RD., STE. 200 (816) 361-0440 MO AUTH. NO.: E-2013011903 LS-2019043127</p>
	<p>DESIGNER / DRAFTER JJI/MWB/ARL</p> <p>REVIEWER MAP</p> <p>PROJECT NUMBER 0222040</p> <p>DATE 12/11/2024</p> <p>SURFACE LOCATION S27 T5S R65W</p> <p>BOOK AND PAGE 6 OF 10</p>
 <p>CRESTONE PEAK RESOURCES OPERATING LLC</p>	

STATE SUNLIGHT/LONG FLOWBACK EQUIPMENT LAYOUT

L:\Engineering\0222040 Citrus - State Linn\Drawings\CONSTRUCTION DRAWINGS\0222040 - LAYOUT-BD-INT-REC.dwg - 12/11/2024 11:09:38 AM MAX REAPARE, LAMP RYNEARSON



LEGEND

- EXISTING ROAD
- WORKING PAD SURFACE
- LIMITS OF DISTURBANCE
- EXISTING OVERHEAD POWER LINE
- EXISTING POWER POLE
- DRAINAGE SWALE
- TOPSOIL STOCKPILE
- BOTTOM OF POND
- PROPOSED ACCESS ROAD
- EXISTING ACCESS ROAD TO BE IMPROVED
- OIL & GAS WELL

Scale: 0 100' 200'

North Arrow

DISTURBANCE AREA AND WORKING PAD SURFACE				DISTURBANCE AREA AND WORKING PAD SURFACE			
CURVE TABLE				LINE TABLE			
CURVE #	RADIUS	DIRECTION	CHORD	LENGTH	LINE #	LENGTH	DIRECTION
C1	75.00'	N48°18'31"W	112.01'	126.47'	L1	100.37'	S83°34'53.29"W
C2	75.00'	S41°47'27"W	99.96'	109.41'	L2	970.24'	S00°00'00.00"E
C3	60.00'	S45°10'55"E	85.12'	94.63'	L3	130.00'	N89°38'10.88"E
C4	60.00'	N44°49'05"E	84.58'	93.87'	L4	980.67'	N00°00'00.00"E

APPROXIMATE INTERIM RECLAMATION PHASE EARTHWORK CALCULATIONS:

SITE AREA (DISTURBANCE AREA) 24.59 AC

ON-SITE RAW QUANTITIES:

EXCAVATION	144,442 CY (OUT)
EMBANKMENT FILL	144,721 CY (FILL)

CONSTRUCTION EXPORT:

6" GRAVEL	7,511 CY
-----------	----------

STOCKPILE:

TOPSOIL(11" STRIPPING)	15,900 CY
COMMON	13,392 CY

TOTAL IMPORT/EXPORT:

EXPORT (STOCKPILE ONSITE)	13,392 CY
---------------------------	-----------

WELLS

(17) STATE SUNLIGHT EAST 5-65 22-23-24 1AH	(1) STATE SUNLIGHT WEST 5-65 22-21-20-19 1AH
(18) STATE SUNLIGHT EAST 5-65 22-23-24 1BH	(2) STATE SUNLIGHT WEST 5-65 22-21-20-19 1BH
(19) STATE SUNLIGHT EAST 5-65 22-23-24 2AH	(3) STATE SUNLIGHT WEST 5-65 22-21-20-19 2AH
(20) STATE SUNLIGHT EAST 5-65 22-23-24 2BH	(4) STATE SUNLIGHT WEST 5-65 22-21-20-19 2BH
(21) STATE SUNLIGHT EAST 5-65 22-23-24 3AH	(5) STATE SUNLIGHT WEST 5-65 22-21-20-19 3AH
(22) STATE SUNLIGHT EAST 5-65 22-23-24 3BH	(6) STATE SUNLIGHT WEST 5-65 22-21-20-19 3BH
(23) STATE SUNLIGHT EAST 5-65 22-23-24 4AH	(7) STATE SUNLIGHT WEST 5-65 22-21-20-19 4AH
(24) STATE SUNLIGHT EAST 5-65 22-23-24 4BH	(8) STATE SUNLIGHT WEST 5-65 22-21-20-19 4BH
(25) STATE LONG EAST 5-65 27-26-25 1AH	(9) STATE LONG WEST 5-65 27-28-29-30 1AH
(26) STATE LONG EAST 5-65 27-26-25 1BH	(10) STATE LONG WEST 5-65 27-28-29-30 1BH
(27) STATE LONG EAST 5-65 27-26-25 2AH	(11) STATE LONG WEST 5-65 27-28-29-30 2AH
(28) STATE LONG EAST 5-65 27-26-25 2BH	(12) STATE LONG WEST 5-65 27-28-29-30 2BH
(29) STATE LONG EAST 5-65 27-26-25 3AH	(13) STATE LONG WEST 5-65 27-28-29-30 3AH
(30) STATE LONG EAST 5-65 27-26-25 3BH	(14) STATE LONG WEST 5-65 27-28-29-30 3BH
(31) STATE LONG EAST 5-65 27-26-25 4AH	(15) STATE LONG WEST 5-65 27-28-29-30 4AH
(32) STATE LONG EAST 5-65 27-26-25 4BH	(16) STATE LONG WEST 5-65 27-28-29-30 4BH

ACREAGE BREAKDOWN

ACREAGE	DESCRIPTION
6.28 AC	INTERIM RECLAMATION DISTURBANCE AREA
6.28 AC	INTERIM RECLAMATION WORKING PAD SURFACE
0.54 AC	ACCESS ROAD DISTURBED AREA
14.11 AC	EXISTING ACCESS ROAD TO BE IMPROVED
20.93 AC	TOTAL DISTURBANCE

LAMP RYNEARSON

LAMPRYNEARSON.COM

OMAHA, NEBRASKA
14710 W. DODGE RD, STE. 100 (402) 486-2498
NE AUTHORIZATION NO.: CA6150

FORT COLLINS, COLORADO
4715 INNOVATION DR., STE. 100 (970) 225-0342

KANSAS CITY, MISSOURI
9001 STATE LINE RD., STE. 200 (816) 361-0440
MO AUTH. NO.: E-2013011903 | LS-2019043127

CIVITAS
CRESTONE PEAK RESOURCES OPERATING LLC

PRELIMINARY

NOT RELEASED FOR CONSTRUCTION

MAP

INTERIM RECLAMATION SITE PLAN

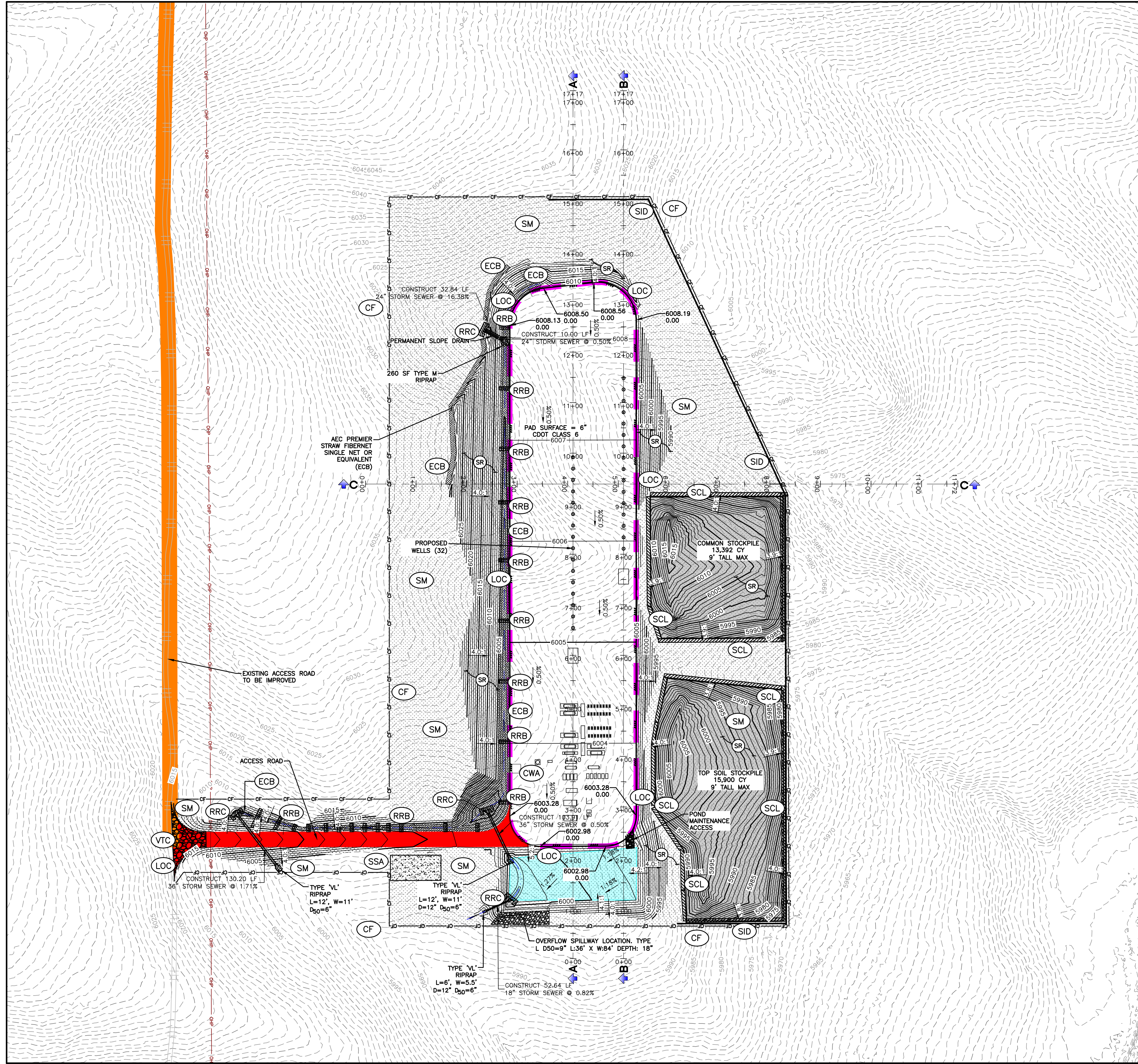
STATE SUNLIGHT/LONG ARAPAHOE COUNTY, COLORADO

811 Know what's below. Call before you dig.

REVISIONS

DESIGNER / DRAFTER
MWB
DATE
12/11/2024
PROJECT NUMBER
0222040
BOOK AND PAGE

SHEET
7 OF 10

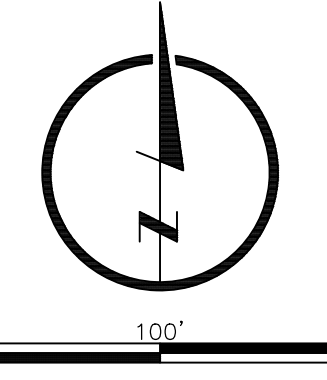


LEGEND

- EXISTING ROAD
- WORKING PAD SURFACE
- LIMITS OF DISTURBANCE
- EXISTING OVERHEAD POWER
- EXISTING POWER POLE
- ACCESS ROAD
- EXISTING ACCESS ROAD TO BE IMPROVED
- EXISTING CONTOUR LINE
- PROPOSED CONTOUR LINE
- GRADE BREAK
- TOPSOIL STOCKPILE
- BOTTOM OF POND

EROSION CONTROL LEGEND

- CF CONSTRUCTION FENCE
- ECB EROSION CONTROL BLANKET
- RRB REINFORCED ROCK BERM
- RRC RRB FOR CULVERT PROTECTION
- SCL SEDIMENT CONTROL LOG
- SM SEEDING AND MULCHING
- SID SLOPE INTERCEPT DITCH
- VTC VEHICLE TRACKING CONTROL



APPROXIMATE INTERIM RECLAMATION PHASE EARTHWORK CALCULATIONS:

SITE AREA (DISTURBANCE AREA) 24.59 AC

ON-SITE RAW QUANTITIES:

EXCAVATION	144,442 CY (CUT)
EMBANKMENT FILL	144,721 CY (FILL)
CONSTRUCTION EXPORT:	
6" GRAVEL	7,511 CY
STOCKPILE:	
TOPSOIL(11" STRIPPING)	15,900 CY
COMMON	13,392 CY
TOTAL IMPORT/EXPORT:	
EXPORT (STOCKPILE ONSITE)	13,392 CY

ACREAGE BREAKDOWN

ACREAGE	DESCRIPTION
6.28 AC	INTERIM RECLAMATION DISTURBANCE AREA
6.28 AC	INTERIM RECLAMATION WORKING PAD SURFACE
0.54 AC	ACCESS ROAD DISTURBED AREA
14.11 AC	EXISTING ACCESS ROAD TO BE IMPROVED
20.93 AC	TOTAL DISTURBANCE

WELLS

17	STATE SUNLIGHT EAST 5-65 22-23-24 1AH	1	STATE SUNLIGHT WEST 5-65 22-21-20-19 1AH
18	STATE SUNLIGHT EAST 5-65 22-23-24 1BH	2	STATE SUNLIGHT WEST 5-65 22-21-20-19 1BH
19	STATE SUNLIGHT EAST 5-65 22-23-24 2AH	3	STATE SUNLIGHT WEST 5-65 22-21-20-19 2AH
20	STATE SUNLIGHT EAST 5-65 22-23-24 2BH	4	STATE SUNLIGHT WEST 5-65 22-21-20-19 2BH
21	STATE SUNLIGHT EAST 5-65 22-23-24 3AH	5	STATE SUNLIGHT WEST 5-65 22-21-20-19 3AH
22	STATE SUNLIGHT EAST 5-65 22-23-24 3BH	6	STATE SUNLIGHT WEST 5-65 22-21-20-19 3BH
23	STATE SUNLIGHT EAST 5-65 22-23-24 4AH	7	STATE SUNLIGHT WEST 5-65 22-21-20-19 4AH
24	STATE SUNLIGHT EAST 5-65 22-23-24 4BH	8	STATE SUNLIGHT WEST 5-65 22-21-20-19 4BH
25	STATE LONG EAST 5-65 27-26-25 1AH	9	STATE LONG WEST 5-65 27-28-29-30 1AH
26	STATE LONG EAST 5-65 27-26-25 1BH	10	STATE LONG WEST 5-65 27-28-29-30 1AH
27	STATE LONG EAST 5-65 27-26-25 2AH	11	STATE LONG WEST 5-65 27-28-29-30 2AH
28	STATE LONG EAST 5-65 27-26-25 2BH	12	STATE LONG WEST 5-65 27-28-29-30 2BH
29	STATE LONG EAST 5-65 27-26-25 3AH	13	STATE LONG WEST 5-65 27-28-29-30 3AH
30	STATE LONG EAST 5-65 27-26-25 3BH	14	STATE LONG WEST 5-65 27-28-29-30 3BH
31	STATE LONG EAST 5-65 27-26-25 4AH	15	STATE LONG WEST 5-65 27-28-29-30 4AH
32	STATE LONG EAST 5-65 27-26-25 4BH	16	STATE LONG WEST 5-65 27-28-29-30 4BH

LAMP RYNEARSON

LAMPRYNEARSON.COM

OMAHA, NEBRASKA
14710 W. DODGE RD., STE. 100 (402) 486-2488
NE AUTHORIZATION NO.: CAG190

FORT COLLINS, COLORADO
4715 INNOVATION DR., STE. 100 (970) 225-0342

KANSAS CITY, MISSOURI
9001 STATE LINE RD., STE. 200 (816) 361-0440
MO AUTH. NO.: E-2013011903 | LS-2019043127

CIVITAS
CRESTONE PEAK RESOURCES OPERATING LLC

PRELIMINARY

NOT RELEASED FOR CONSTRUCTION

MAP

INTERIM RECLAMATION AND STORMWATER-EROSION CONTROL
DRAWING 1

STATE SUNLIGHT/LONG
ARAPAHOE COUNTY, COLORADO

811
Know what's below.
Call before you dig.

DESIGNER / DRAFTER
JJI/MHB/ARL
DATE
12/11/2024
PROJECT NUMBER
0222040
BOOK AND PAGE

SHEET
8 OF 10

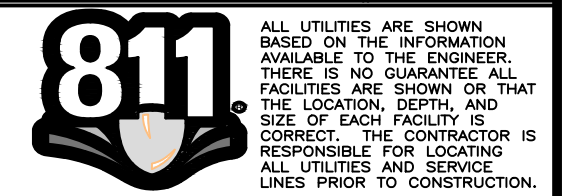
L:\Engineering\0222040 Citrus - State Line\Drawings\CONSTRUCTION DRAWINGS\0222040 - ECP INTERIM RECLAMATION 12/11/2024 11:03:09 AM MAX BEAUPRE, LAMP RYNEARSON

PRELIMINARY

NOT RELEASED FOR CONSTRUCTION
 MAP

INTERIM RECLAMATION AND STORMWATER-EROSION CONTROL
 DRAWING 2

STATE SUNLIGHT/LONG
 ARAPAHOE COUNTY, COLORADO



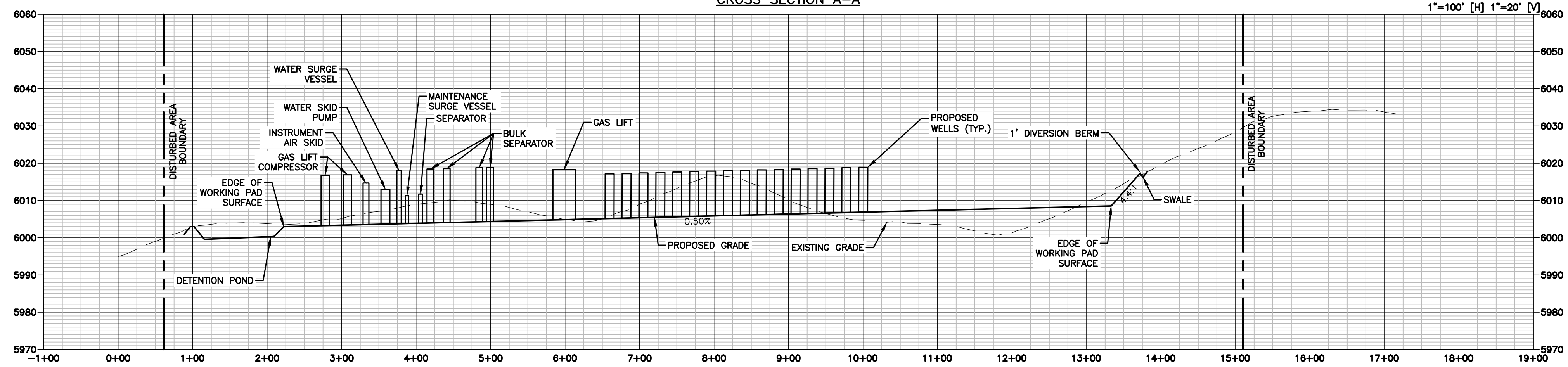
Know what's below.
 Call before you dig.

REVISIONS

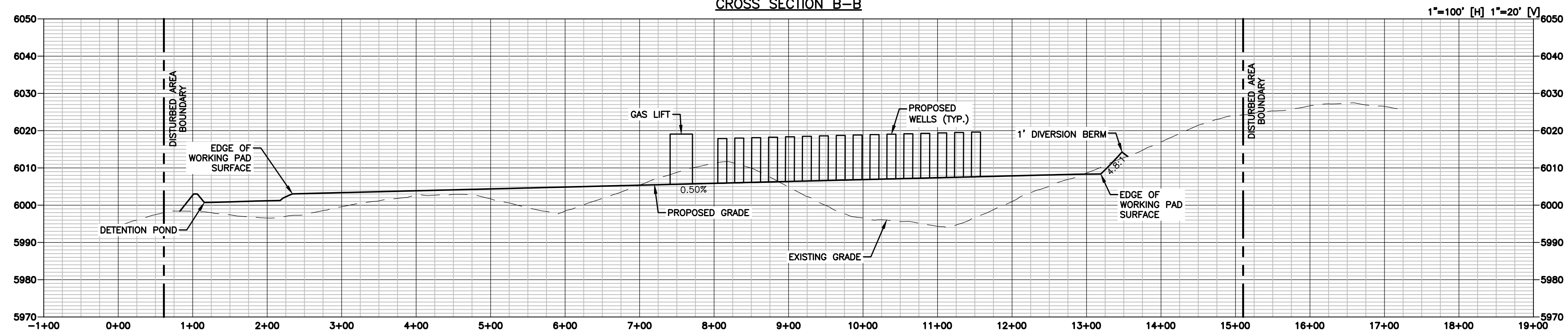
DESIGNER / DRAFTER
 JJJ/MWB/ARL
 DATE
 12/11/2024
 PROJECT NUMBER
 0222040
 BOOK AND PAGE
 1 OF 1

SHEET

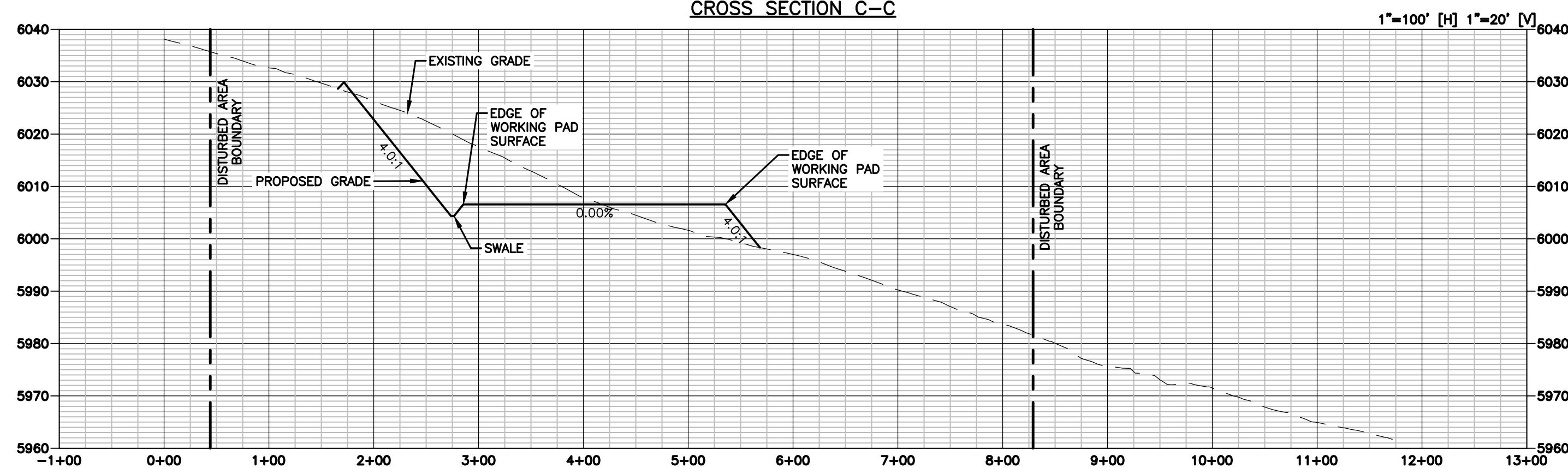
CROSS SECTION A-A



CROSS SECTION B-B






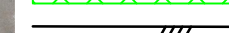


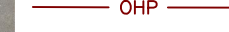


CROSS SECTION C-C

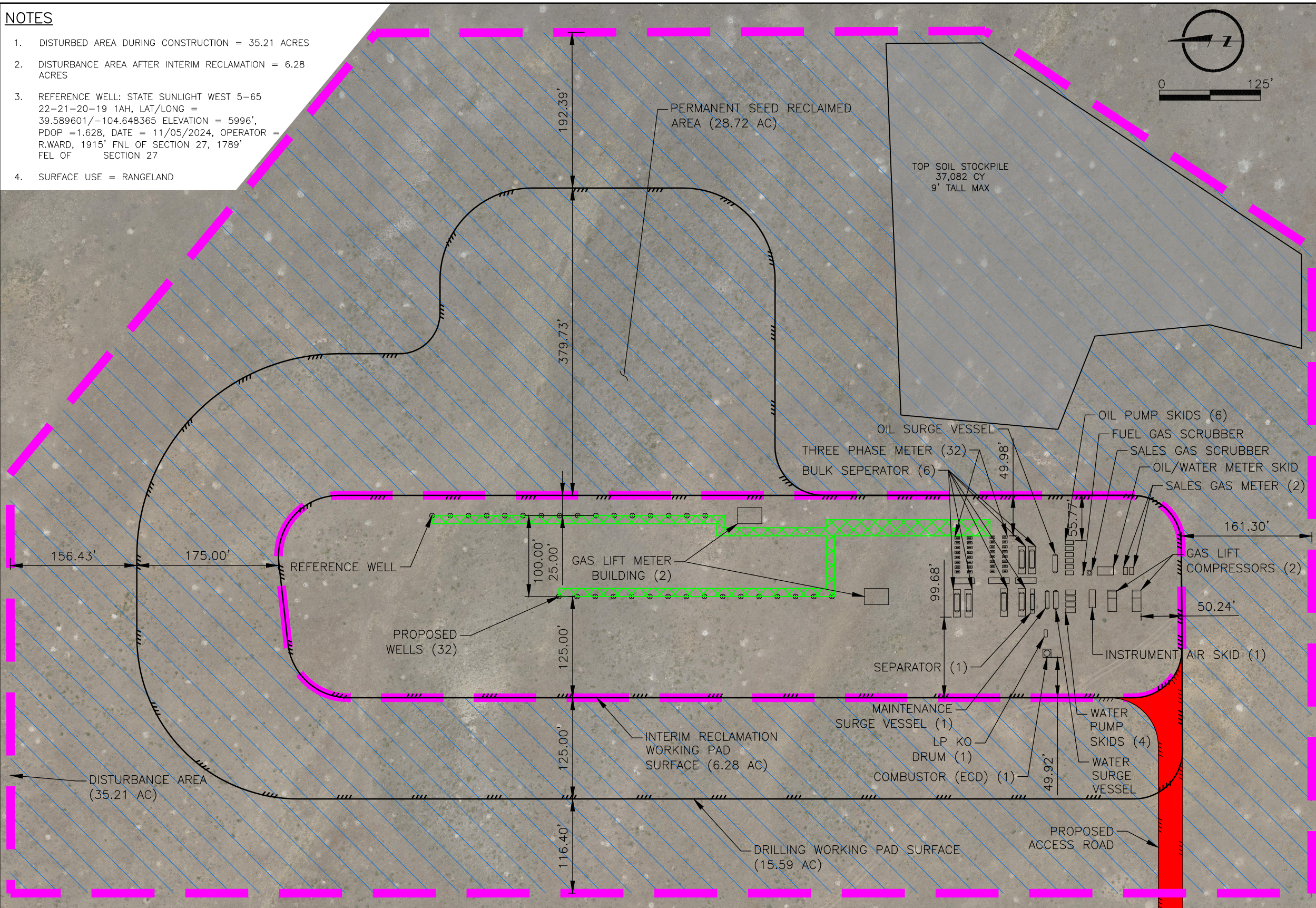


NOTES

- DISTURBED AREA DURING CONSTRUCTION = 35.21 ACRES
- DISTURBANCE AREA AFTER INTERIM RECLAMATION = 6.28 ACRES
- REFERENCE WELL: STATE SUNLIGHT WEST 5-65 22-21-20-19 1AH, LAT/LONG = 39.589601/-104.648365 ELEVATION = 5996', PDOP = 1.628, DATE = 11/05/2024, OPERATOR = R.WARD, 1915' FNL OF SECTION 27, 1789' FEL OF SECTION 27
- SURFACE USE = RANGELAND

LEGEND

-  DISTURBANCE AREA (35.21 AC)
-  AREA TO BE RECLAIMED (28.72 AC)
-  FLOWLINE CORRIDOR
-  WORKING PAD SURFACE
-  OIL & GAS WELL
-  OHP EXISTING OVERHEAD POWER
-  EXISTING ROAD
-  ACCESS ROAD
-  EXISTING ACCESS ROAD TO BE IMPROVED



WELLS

17	STATE SUNLIGHT EAST 5-65 22-23-24 1AH	1	STATE SUNLIGHT WEST 5-65 22-21-20-19 1AH
18	STATE SUNLIGHT EAST 5-65 22-23-24 1BH	2	STATE SUNLIGHT WEST 5-65 22-21-20-19 1BH
19	STATE SUNLIGHT EAST 5-65 22-23-24 2AH	3	STATE SUNLIGHT WEST 5-65 22-21-20-19 2AH
20	STATE SUNLIGHT EAST 5-65 22-23-24 2BH	4	STATE SUNLIGHT WEST 5-65 22-21-20-19 2AH
21	STATE SUNLIGHT EAST 5-65 22-23-24 3AH	5	STATE SUNLIGHT WEST 5-65 22-21-20-19 3AH
22	STATE SUNLIGHT EAST 5-65 22-23-24 3BH	6	STATE SUNLIGHT WEST 5-65 22-21-20-19 3BH
23	STATE SUNLIGHT EAST 5-65 22-23-24 4AH	7	STATE SUNLIGHT WEST 5-65 22-21-20-19 4AH
24	STATE SUNLIGHT EAST 5-65 22-23-24 4BH	8	STATE SUNLIGHT WEST 5-65 22-21-20-19 4BH
25	STATE LONG EAST 5-65 27-26-25 1AH	9	STATE LONG WEST 5-65 27-28-29-30 1AH
26	STATE LONG EAST 5-65 27-26-25 1BH	10	STATE LONG WEST 5-65 27-28-29-30 1AH
27	STATE LONG EAST 5-65 27-26-25 2AH	11	STATE LONG WEST 5-65 27-28-29-30 2AH
28	STATE LONG EAST 5-65 27-26-25 2BH	12	STATE LONG WEST 5-65 27-28-29-30 2BH
29	STATE LONG EAST 5-65 27-26-25 3AH	13	STATE LONG WEST 5-65 27-28-29-30 3AH
30	STATE LONG EAST 5-65 27-26-25 3BH	14	STATE LONG WEST 5-65 27-28-29-30 3BH
31	STATE LONG EAST 5-65 27-26-25 4AH	15	STATE LONG WEST 5-65 27-28-29-30 4AH
32	STATE LONG EAST 5-65 27-26-25 4BH	16	STATE LONG WEST 5-65 27-28-29-30 4BH

LAMP RYNEARSON
LAMPRYNEARSON.COM

OMAHA, NEBRASKA
14710 W. DODGE RD., STE. 100 (402) 496-2498
NE AUTH. NO. CA0130

FORT COLLINS, COLORADO
4715 INNOVATION DR., STE. 100 (970) 226-0342

KANSAS CITY, MISSOURI
9001 STATE LINE RD., STE. 200 (816) 361-0440
MO AUTH. NO. E-2013011903 | LS-2019043127

CIVITAS
CRESTONE PEAK RESOURCES OPERATING LLC

DESIGNER / DRAFTER
JJJ/MWB/ARL

REVIEWER
MAP

PROJECT NUMBER
0222040

DATE
12/11/2024

SURFACE LOCATION
S27 T5S R65W

BOOK AND PAGE
10 OF 10

STATE SUNLIGHT/LONG FACILITY LAYOUT DRAWING

Engineering 0222040 - State Long Drawings Construction Drawings OGP 0222040 - FACILITY LAYOUT.dwg, 12/11/2024 11:13:35 AM, MAX BEAUPRE, LAMP RYNEARSON