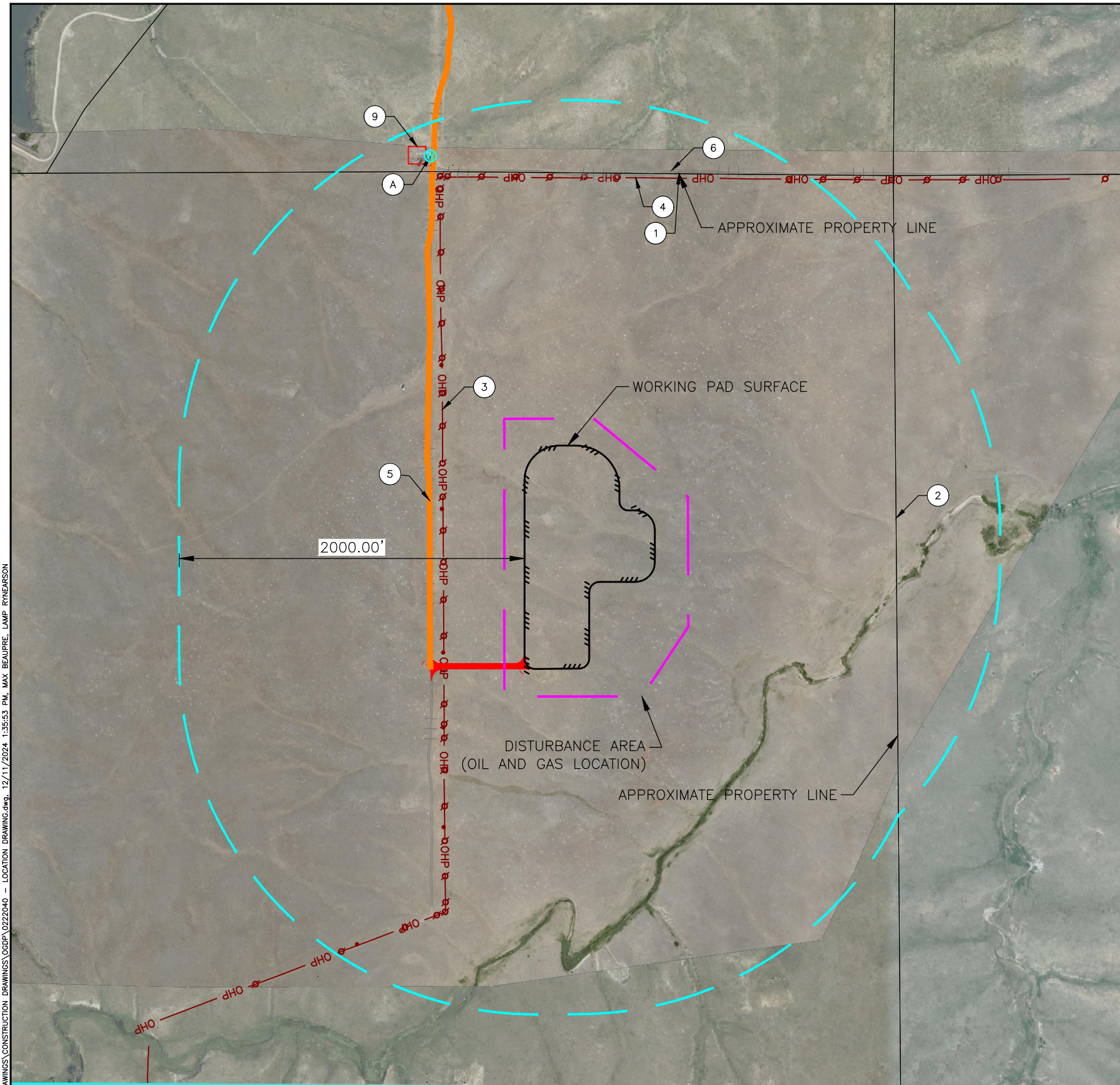


L:\Engineering\0222040 Civitas - State Long Drawings\CONSTRUCTION DRAWINGS\OGDP\0222040 - LOCATION DRAWING.dwg, 12/11/2024 1:35:53 PM, MAX BEAUPRE, LAMP RYNEARSON



LEGEND

- PROPERTY LINE
- ACCESS ROAD
- EXISTING ACCESS ROAD TO BE IMPROVED
- DISTURBANCE AREA (DA)
- WORKING PAD SURFACE
- 2000' SETBACK FROM WORKING PAD SURFACE
- ⊙ WATER WELL
- ⊕ EXISTING OVERHEAD POWER POLE
- OHP — EXISTING OVERHEAD POWER LINE
- x — EXISTING FENCE LINE
- EXISTING GRAVEL ROAD

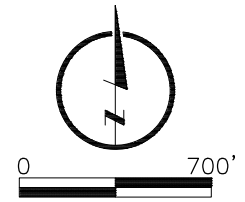
- NOTES**
1. DISTURBED AREA DURING CONSTRUCTION = 35.21 ACRES
 2. DISTURBANCE AREA AFTER INTERIM RECLAMATION = 6.28 ACRES
 3. DRILLING WORKING PAD SURFACE = 15.59 ACRES
 4. INTERIM RECLAMATION WORKING PAD SURFACE = 6.28 ACRES
 5. REFERENCE WELL: STATE SUNLIGHT WEST 5-65 22-21-20-19 1AH
LAT/LONG = 39.589601/-104.648365
ELEVATION = 5996'
PDOP = 1.628
DATE = 11/05/2024, OPERATOR = R.WARD, 1915' FNL OF SECTION 27, 1789' FEL OF SECTION 27
 6. SURFACE USE = RANGELAND
 7. NO HIGH OCCUPANCY BUILDING UNITS, SCHOOL FACILITIES, BUILDING UNITS, FUTURE SCHOOL FACILITIES, OR CHILD CARE CENTERS WITHIN 2000' OF WPS.

WATER WELL TABLE — OGDP

	DISTANCE FROM WORKING PAD SURFACE (FT)	DIRECTION	PERMIT	RECEIPT
A	1815	NW	47701-F	0409358B

VISIBLE IMPROVEMENTS TABLE

	DISTANCE (FT)	FROM	DIRECTION	DESCRIPTION
1	1580	WORKING PAD SURFACE	N	PROPERTY LINE
2	1397	WORKING PAD SURFACE	E	PROPERTY LINE
3	467	WORKING PAD SURFACE	W	EXISTING OHP
4	1551	WORKING PAD SURFACE	N	EXISTING OHP
5	545	WORKING PAD SURFACE	W	EXISTING ACCESS ROAD
6	1564	WORKING PAD SURFACE	N	EXISTING ACCESS ROAD
7	1786	WORKING PAD SURFACE	NW	FENCE



LAMP RYNEARSON
LAMP RYNEARSON.COM

OMAHA, NEBRASKA
14710 W. DODGE RD., STE. 100 (402) 496.2498
NE AUTH. NO.: CA0130

FORT COLLINS, COLORADO
4715 INNOVATION DR., STE. 100 (970) 226.0342

KANSAS CITY, MISSOURI
8001 STATE LINE RD., STE. 200 (816) 361.0440
MO AUTH. NO.: E-2013011903 | LS-2019049127

DESIGNER / DRAFTER
JJI/MWB/ARL

REVIEWER
MAP

PROJECT NUMBER
0222040

DATE
12/11/2024

SURFACE LOCATION
S27 T5S R65W

BOOK AND PAGE
1 OF 1

CIVITAS
CRESTONE PEAK RESOURCES OPERATING LLC

STATE SUNLIGHT/LONG LOCATION DRAWING