



**CEMENT BOND LOG
WITH GAMMA RAY**

MIDWEST WIRELINE

Comp. Desert Eagle Operating
Well Red Rocks #1-09
Field
Co. Las Animas
State Colorado

Company Desert Eagle Operating
Well Red Rocks #1-09
Field
County Las Animas State Colorado

Location: API # : 05-071-09936-00
SE NE
Permanent Datum SEC 1 TWP 30S RGE 55W
Log Measured From GL 0 Above Perm. Datum
Drilling Measured From
Other Services
None
Elevation
K.B.
D.F.
G.L.

Date of Service	4/21/2025			
Run Number	One			
Depth Driller or PBTID	1066			
Depth Logger	1039			
Bottom Log Interval	1036			
Top Log Interval	00			
Open Hole Size	12.25			
Type Fluid	Water			
Fluid Level	20			
Fluid Density	N/A			
Max. Recorded Temperature	85			
Max. Wellhead Pressure	00			
Wellhead Connection	N/A			
Estimated Cement Top	Surface			
Unit Number	P-24			
Wireline Size	0.474			
Location	Hays			
Recorded By	T. Martin			
Witnessed By	Brandon Parks			
Tubing Record	Size	WFt	Top	Bottom
Surface Casing	13.375	46	00	10
Production Casing	7	20	00	TD
Liner Record				

<<< Fold Here >>>

All interpretations are opinions based on inferences from electrical or other measurements and Midwest Wireline LLC cannot and does not guarantee the accuracy or correctness of any interpretation, and Midwest Wireline LLC will not be liable or responsible for any loss, costs, damages, or expenses incurred or sustained by anyone resulting from any interpretation made by any of our officers, agents or employees.

Comments

N/A DENOTES NOT AVAILABLE OR NON-APPLICABLE.

Desert Eagle yard, E then S into

THANK YOU FOR USING MIDWEST WIRELINE LLC!

Your Midwest Wireline Crew		Tool Data - Services	Serial Number
Engineer: T. Martin Operator: Operator: Operator:			

Operator	Offset (ft)	Substrate	Description	Length (ft)	O.D. (in)	Weight (lb)
----------	-------------	-----------	-------------	-------------	-----------	-------------

Sensor	Offset (ft)	Schematic	Description	Length (ft)	O.D. (in)	Weight (lb)	
			Cable Head-Titan_144 1 7/16" Titan Cable Head	1.03	1.44	2.00	
			Centralizer-275 Probe 2 3/4" Probe Adjustable Spring Centralizer	2.88	2.75	15.00	
WVFS8	11.94			PROBE-RBT-DIGITAL-RBL-D (PR-012) Probe 2 3/4" Radii Bond-Digital	8.75	2.75	100.00
WVFS7	11.94						
WVFS6	11.94						
WVFS5	11.94						
WVFS4	11.94						
WVFS3	11.94						
WVFS2	11.94						
WVFS1	11.94						
WVFCAL	11.94						
WV3FT	11.94						
WV5FT	10.94						
			Centralizer-275 Probe 2 3/4" Probe Adjustable Spring Centralizer	2.88	2.75	15.00	
CCL	3.96						
GR	2.63		GR_CCL-2 3/4" Probe (060802)	4.54	2.75	50.00	
			Bullnose-PROBE Probe Go Pin Pressure Cap	0.33	1.38	1.00	

Dataset: desert eagle_red rocks #1-09.db: field/well/SCBL/pass4.1
 Total length: 20.41 ft
 Total weight: 183.00 lb
 O.D.: 2.75 in

Log Variables

DatabaseC:\ProgramData\Warrior\Data\desert eagle_red rocks #1-09.db
 Dataset field/well/SCBL/pass4.1/_vars_

Top - Bottom

BOREID in 12.25	BOTTEMP degF 85	CASEOD in 7	CASETHCK in 0.272	CASEWGHT lb/ft 20	MAXAMPL mV 0	MINAMPL mV 1	MINATTN db/ft 0.8
PERFS No	PPT usec 0	SRFTEMP degF 80	TDEPTH ft 1039				

Variable Description

BOREID : Borehole I.D.
 BOTTEMP : Bottom Hole Temperature
 CASEOD : Casing O.D.
 CASETHCK : Casing Thickness

CASEWGHT : Casing Weight
 MAXAMPL : Maximum Amplitude
 MINAMPL : Minimum Amplitude
 MINATTN : Minimum Attenuation

PERFS : Perforation Flag
 PPT : Predicted Pipe Time
 SRFTEMP : Surface Temperature
 TDEPTH : Total Depth



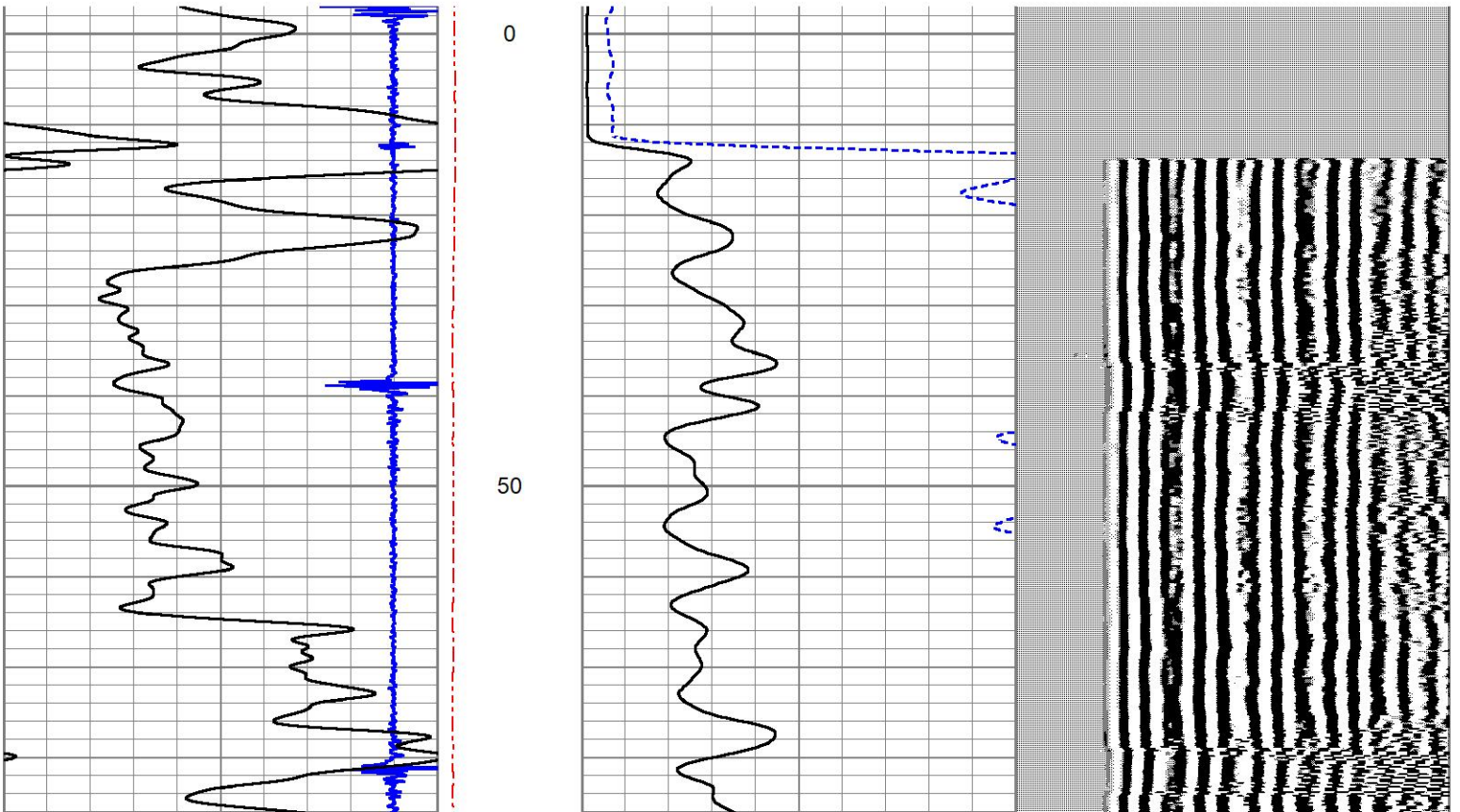
MIDWEST WIRELINE

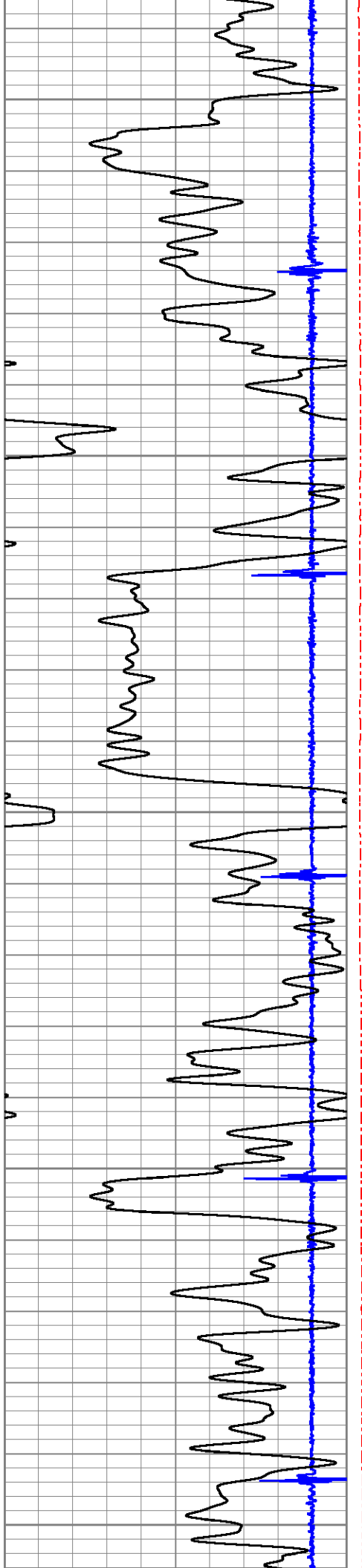
DETAIL SECTION

MAIN PASS

Database File desert eagle_red rocks #1-09.db
 Dataset Pathname SCBL/pass4.1
 Presentation Format pinr_cbl
 Dataset Creation Mon Apr 21 14:23:30 2025
 Charted by Depth in Feet scaled 1:240

-9	Collar Locator	1	Line Tension	0	Amplitude (mV)	100	200	Variable Density (usec)	1200
0	Gamma Ray	150	(lb)2000						
250	3' Travel Time (usec)	150							





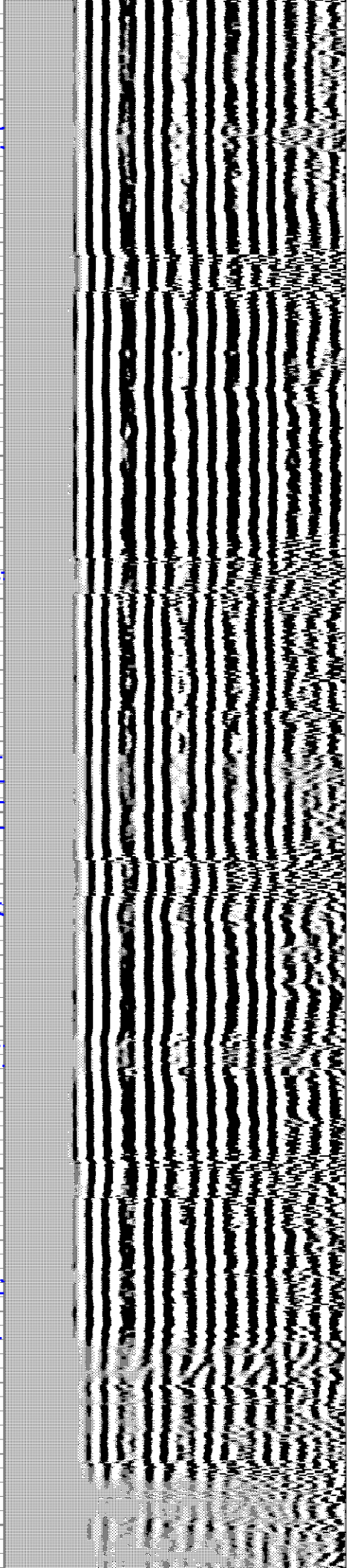
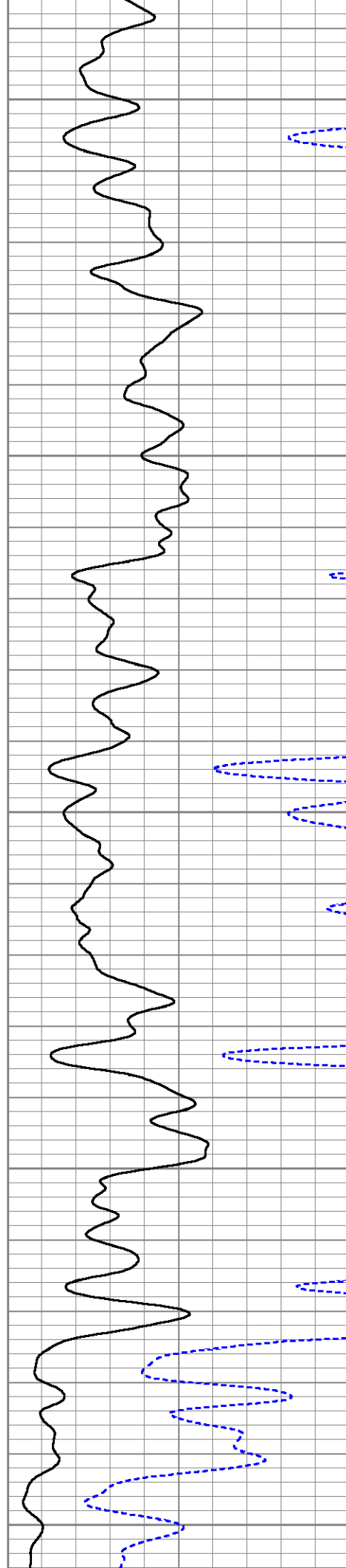
100

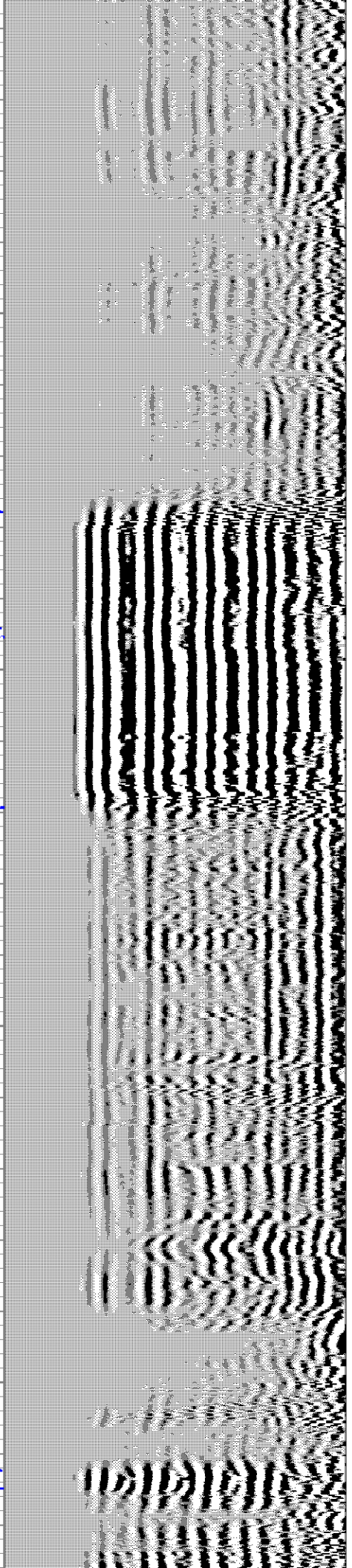
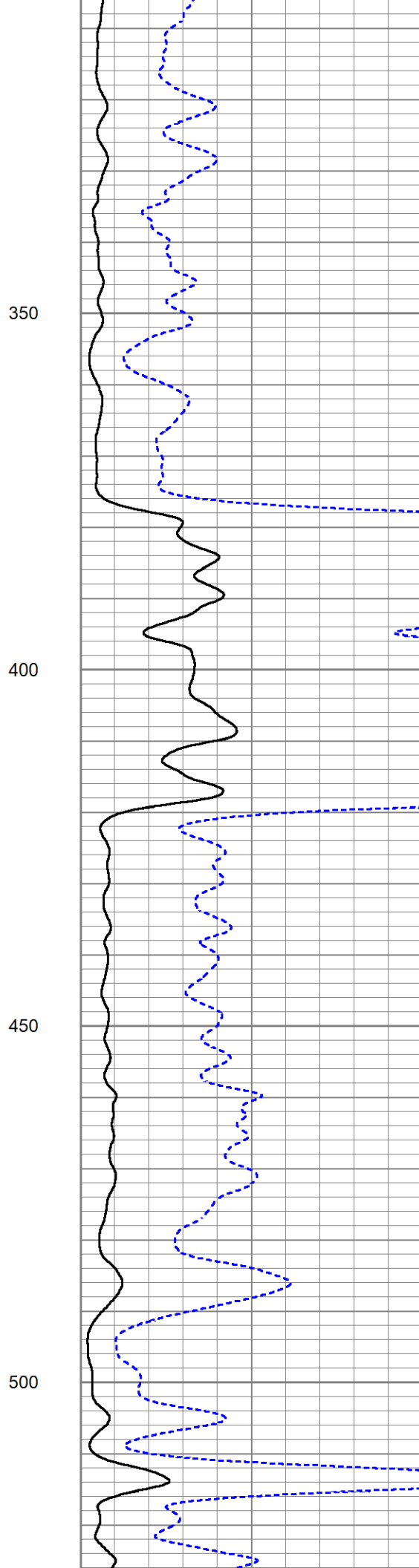
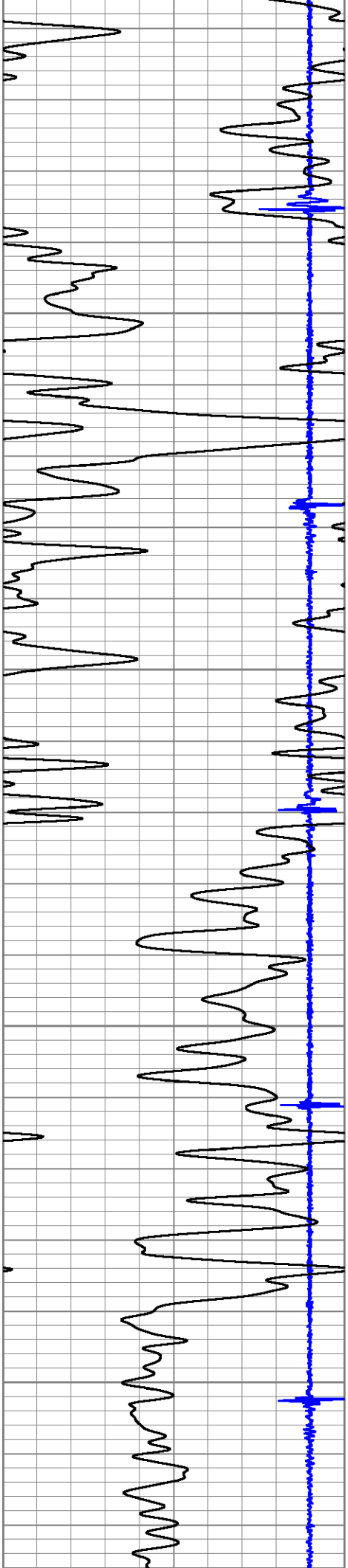
150

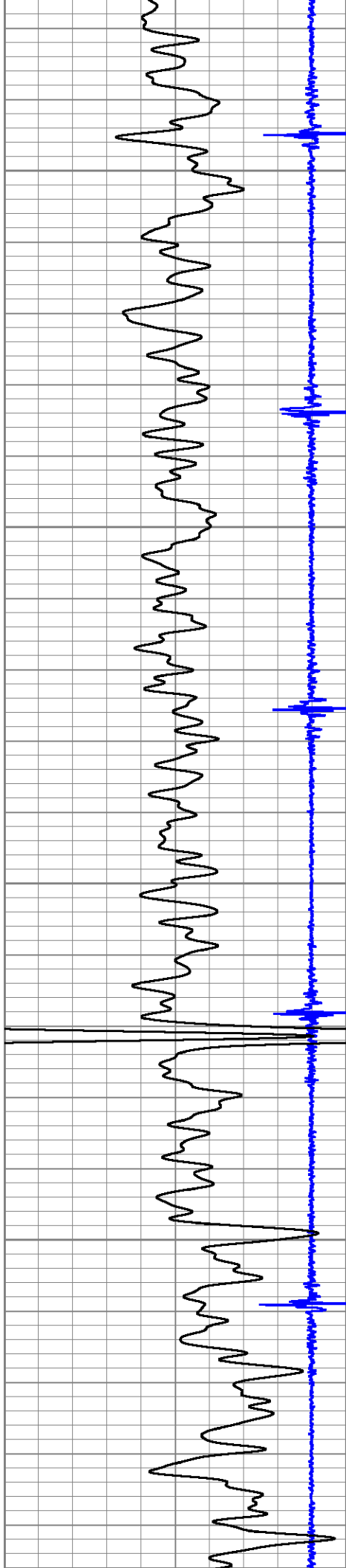
200

250

300





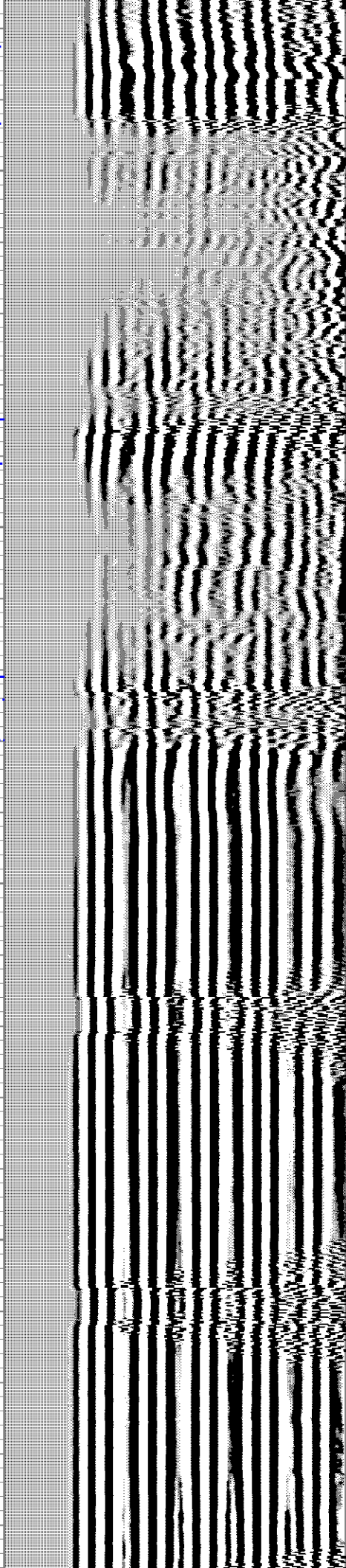
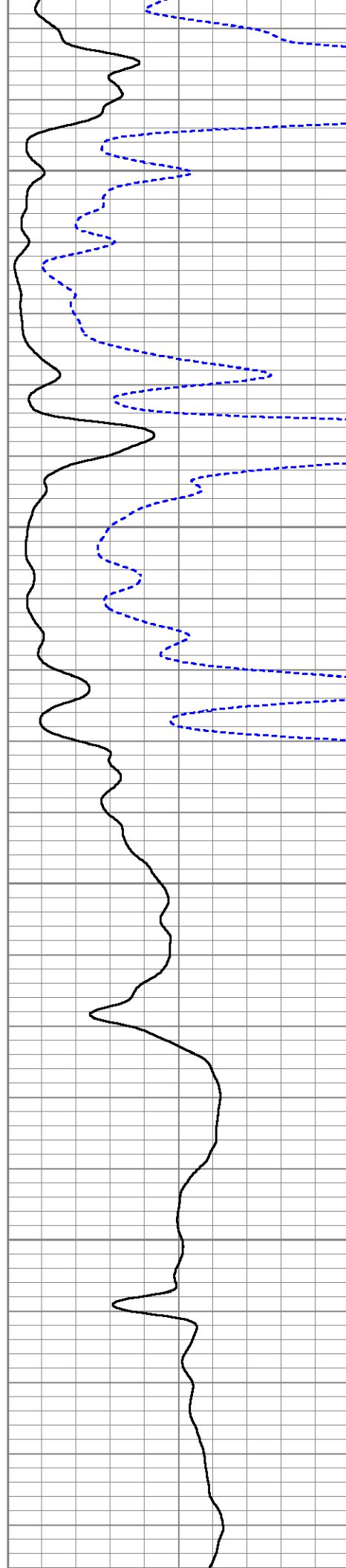


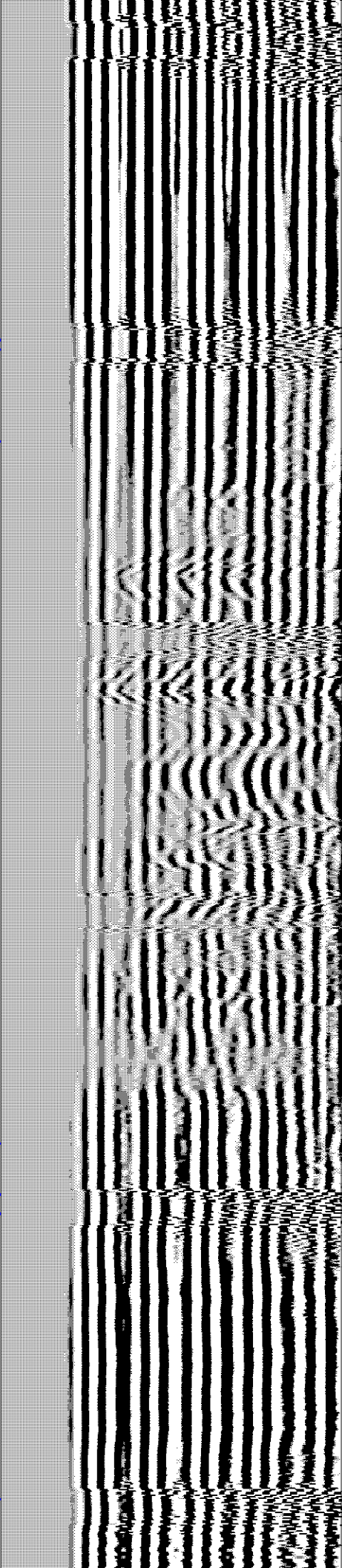
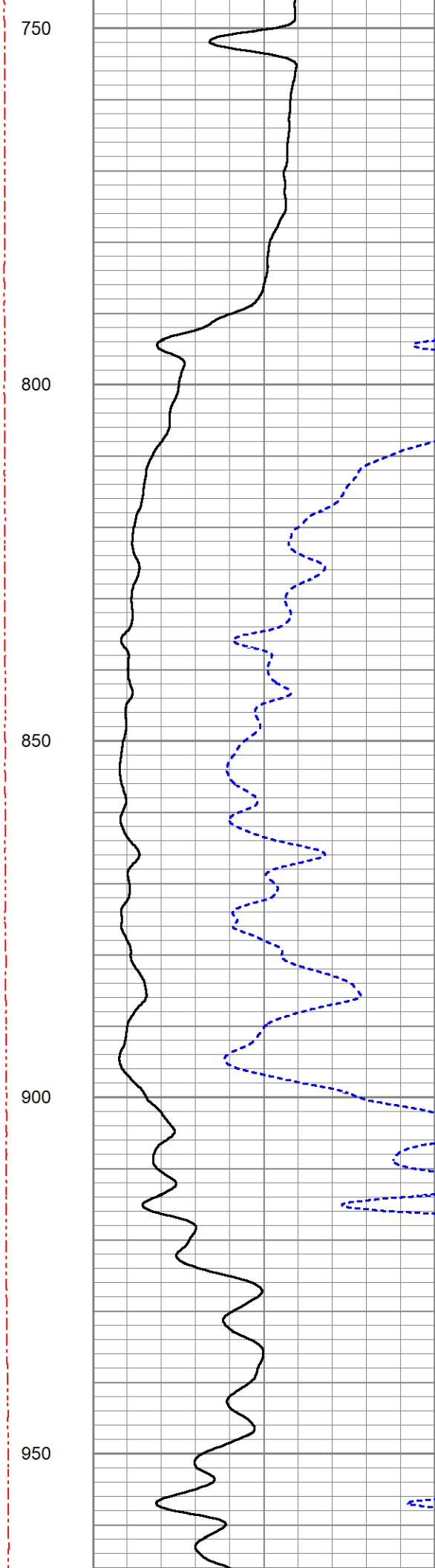
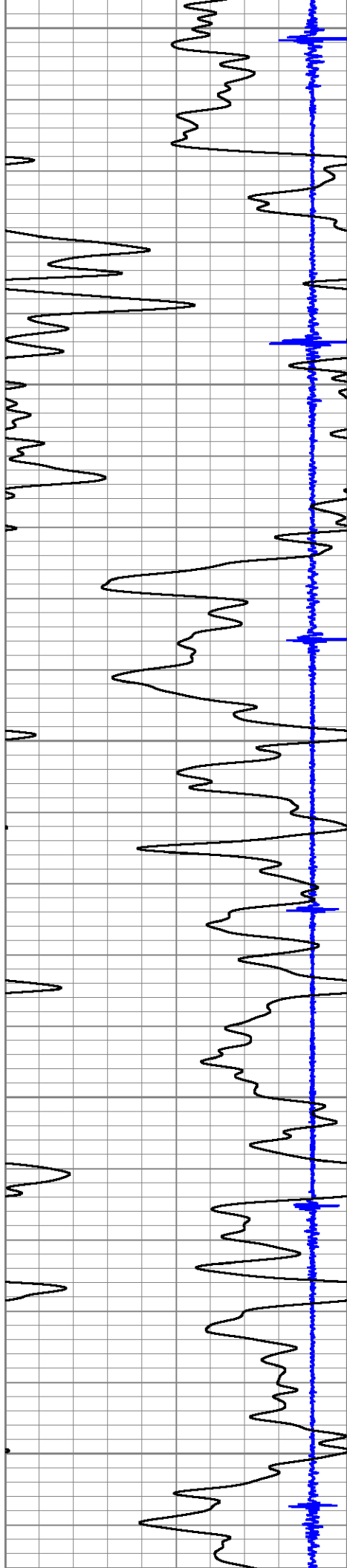
550

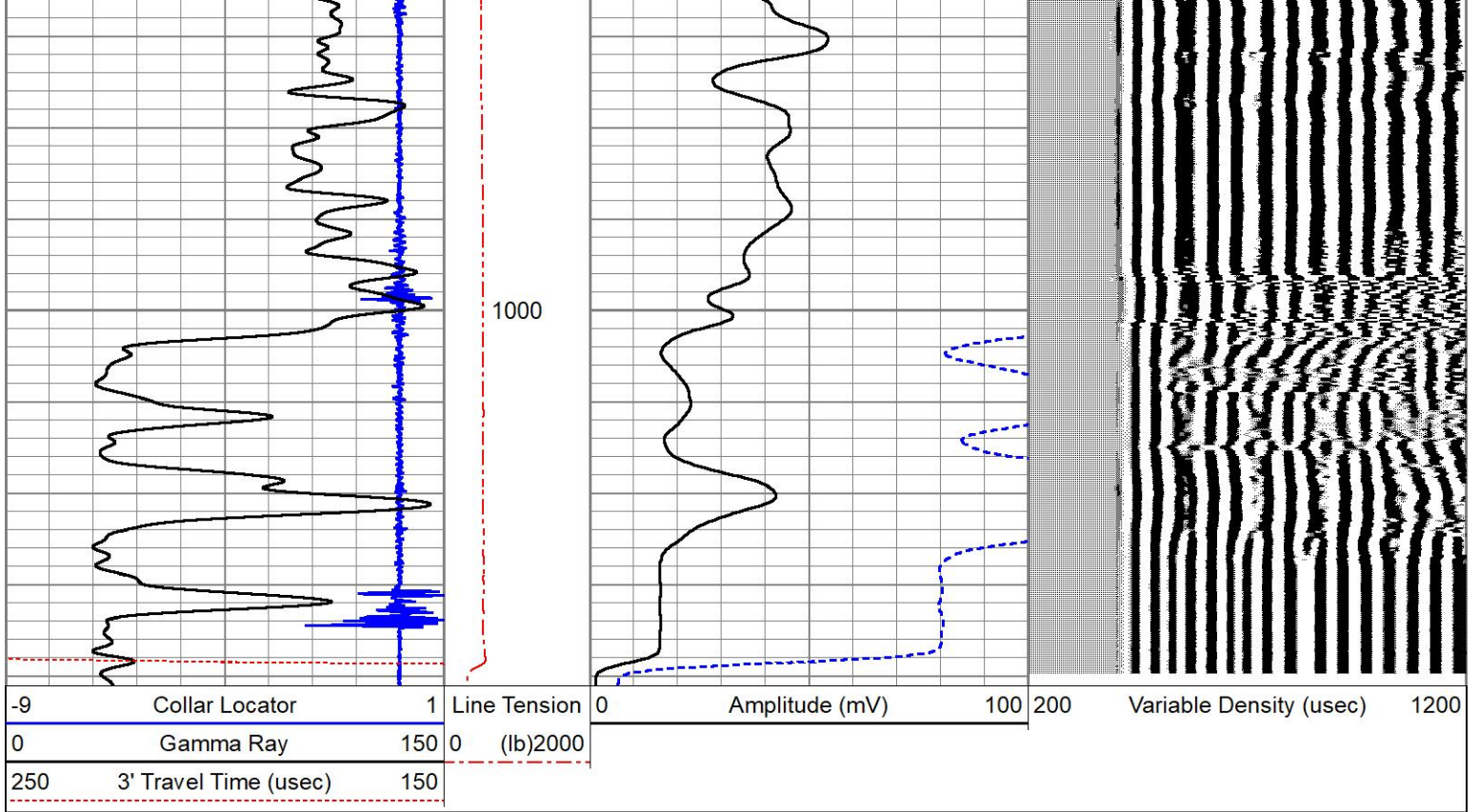
600

650

700



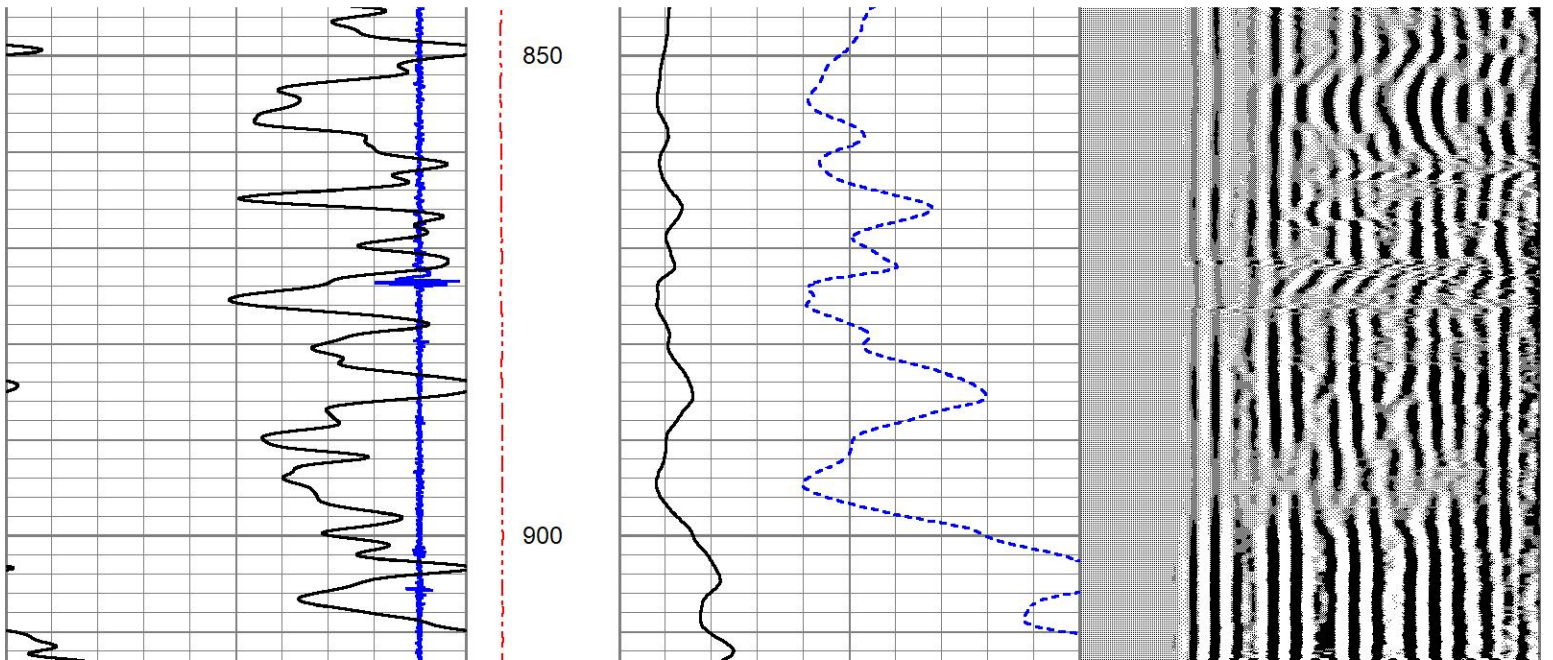
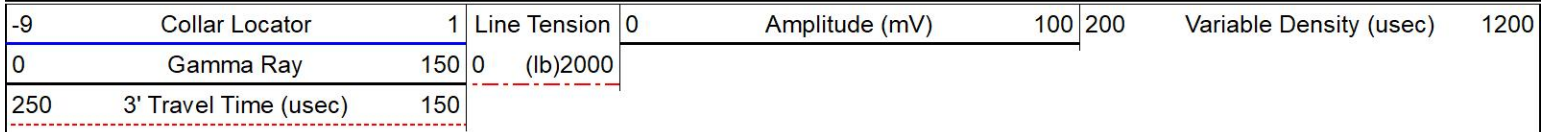


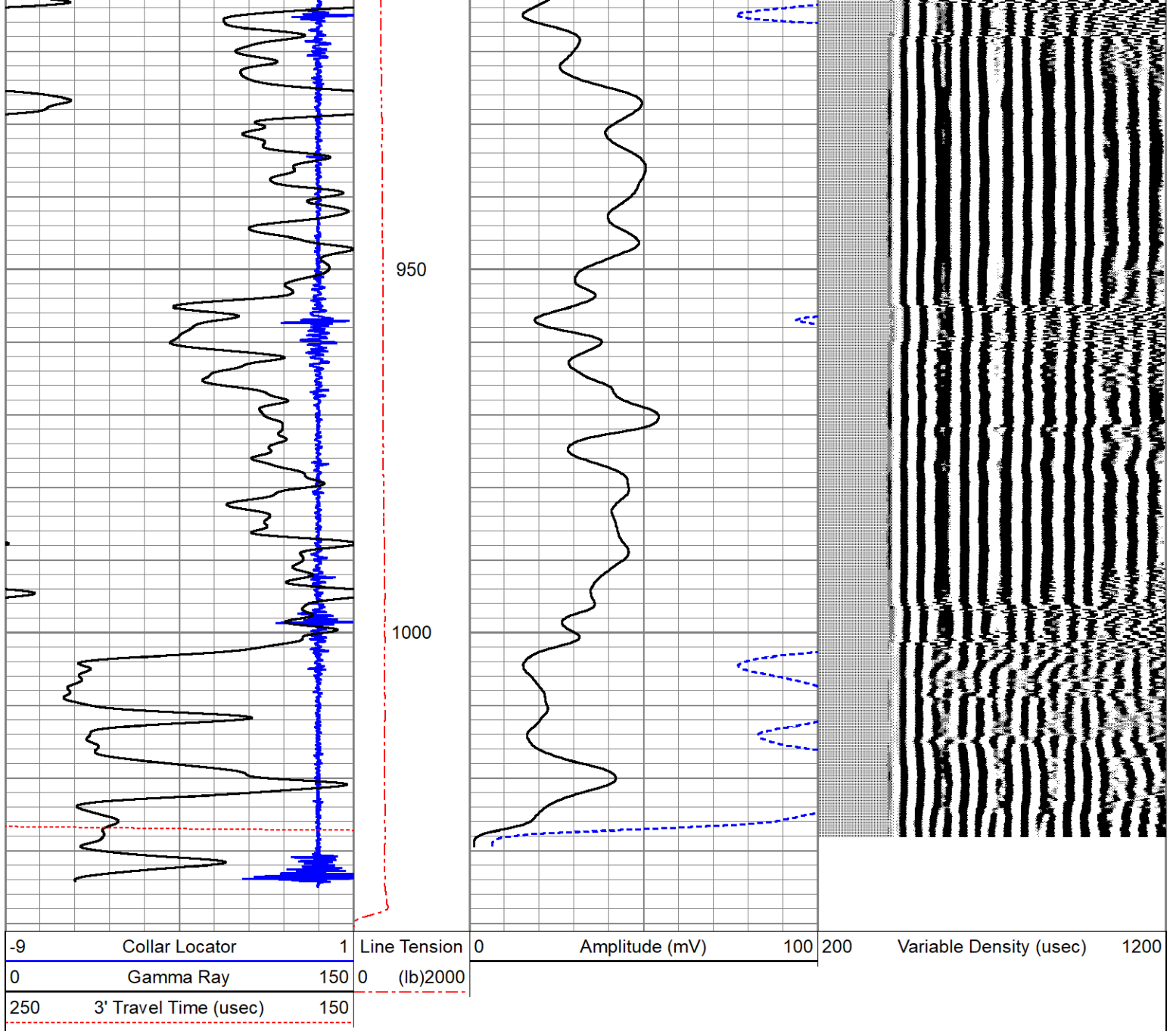


REPEAT SECTION

REPEAT PASS

Database File desert eagle_red rocks #1-09.db
 Dataset Pathname SCBL/pass3
 Presentation Format pinr_cbl
 Dataset Creation Mon Apr 21 13:54:59 2025
 Charted by Depth in Feet scaled 1:240





Calibration Report

Database File desert_eagle_red_rocks #1-09.db
 Dataset Pathname SCBL/pass4.1
 Dataset Creation Mon Apr 21 14:23:30 2025

Gamma Ray Calibration Report

Serial Number: 060802
 Tool Model: 2 3/4" Probe
 Performed: Thu Mar 2 18:51:50 2023

Calibrator Value: 1.0

Background Reading: 0.0 cps
 Calibrator Reading: 1.0 cps

Sensitivity: 1.5000 /cps

Segmented Cement Bond Log Calibration Report

Serial Number: PR-012
 Tool Model: PBL-D

Tool Model: RBL-D
 Calibration Casing Diameter: 7.000 in
 Calibration Depth: 692.142 ft

Master Calibration, performed Mon Apr 21 13:51:14 2025:

	Raw (v)		Calibrated (mv)		Results	
	Zero	Cal	Zero	Cal	Gain	Offset
3'	-0.010	2.036	1.000	62.165	29.905	1.291
CAL	-0.015	1.716				
5'	-0.013	2.101	1.000	62.165	28.930	1.378
SUM						
S1	-0.004	2.109	0.000	100.000	47.333	0.177
S2	0.001	2.174	0.000	100.000	46.021	-0.037
S3	0.001	2.139	0.000	100.000	46.770	-0.050
S4	0.000	2.021	0.000	100.000	49.480	-0.009
S5	0.002	1.905	0.000	100.000	52.526	-0.081
S6	-0.000	1.840	0.000	100.000	54.355	0.009
S7	0.001	1.847	0.000	100.000	54.154	-0.047
S8	-0.000	1.972	0.000	100.000	50.696	0.019

Air Zero Calibration, performed Mon Apr 21 11:24:18 2025:

	Raw (v)		Calibrated (v)		Results	
	Zero		Zero		Offset	
3'	0.000		0.000			0.000
5'	0.000		0.000			0.000
SUM						
S1	0.000		0.000			0.000
S2	0.000		0.000			0.000
S3	0.000		0.000			0.000
S4	0.000		0.000			0.000
S5	0.000		0.000			0.000
S6	0.000		0.000			0.000
S7	0.000		0.000			0.000
S8	0.000		0.000			0.000



Company Desert Eagle Operating
 Well Red Rocks #1-09
 Field
 County Las Animas
 State Colorado