



Gamma Ray CCL  
CBL VDL

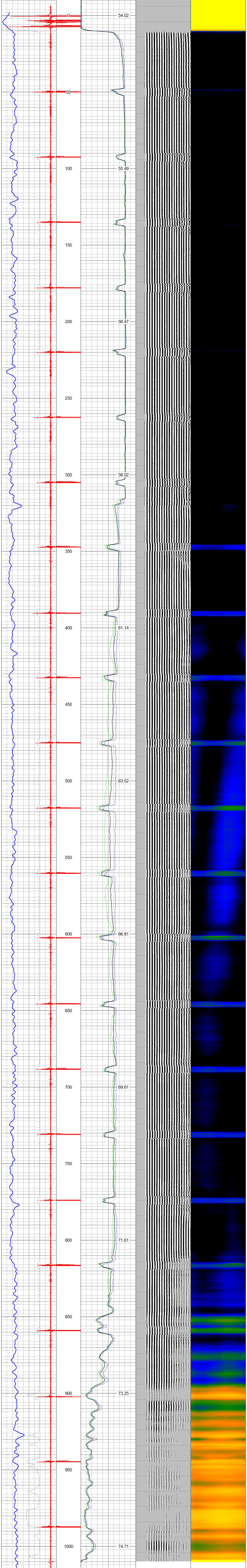
Company Ensign		Well Faulkner 19-13	
Field Wattenberg		County Weld	
State CO		Location: API #: 05-123-30094	
Other Services		SWSW	
Permanent Datum	GL	Elevation	4895'
Log Measured From	KB	K B	4908'
Drilling Measured From	KB	O.L.	4895'
Date	April 28, 2025	Run Number	One
Depth Driller	7336	Bottom Logger	1000'
Bottom Logged Interval	1000'-0'	Top Log Interval	1000'-0'
Core Log Interval	7' 7/8"	Type Fluid	Water
Density / Viscosity			
Max. Recorded Temp.			
Estimated Cement Top		ROA	
Time Well Ready		Time Logger on Bottom	
Equipment Number	506	Location	Kersey, Co.
Recorded By	Kyle Schneider	Witnessed By	Shirane P.
Run Number	Bit	From	To
Borehole Record	Size	Tubing Record	Weight
From	To	From	To
Casing Record	Size	Wg/FT	Top
Surface String	8 5/8"	24	13'
Prod. String	4 1/2"	11.6	
Production String			Bottom
			7320'

<<< Fold Here >>>

All interpretations are opinions based on inferences from electrical or other measurements and we cannot and do not guarantee the accuracy or correctness of any interpretation, and we shall not, except in the case of gross or willful negligence on our part, be liable or responsible for any loss, costs, damages, or expenses incurred or sustained by anyone resulting from any interpretation made by any of our officers, agents or employees. These interpretations are also subject to our general terms and conditions set out in our current Price Schedule.

Comments

Database File	cbl faulkner 19-13.db	
Dataset Pathname	pass3	
Presentation Format	pdcgreg	
Dataset Creation	Mon Apr 28 09:13:03 2025	
Charted by	Depth in Feet scaled 1:240	



0	GR (GAPI)	200	CCL\$1	0	AMPMIN	100	200	WWF5FT (usec)	1200	1	SECTORS	8
5	CCL\$1	-0.55	0.3	0.6	AMPMAX	100						
400	TT3FT (usec)	200			AMP3FT (mV)	100						
200	GR (GAPI)	400			GCT_Temp (degF)							