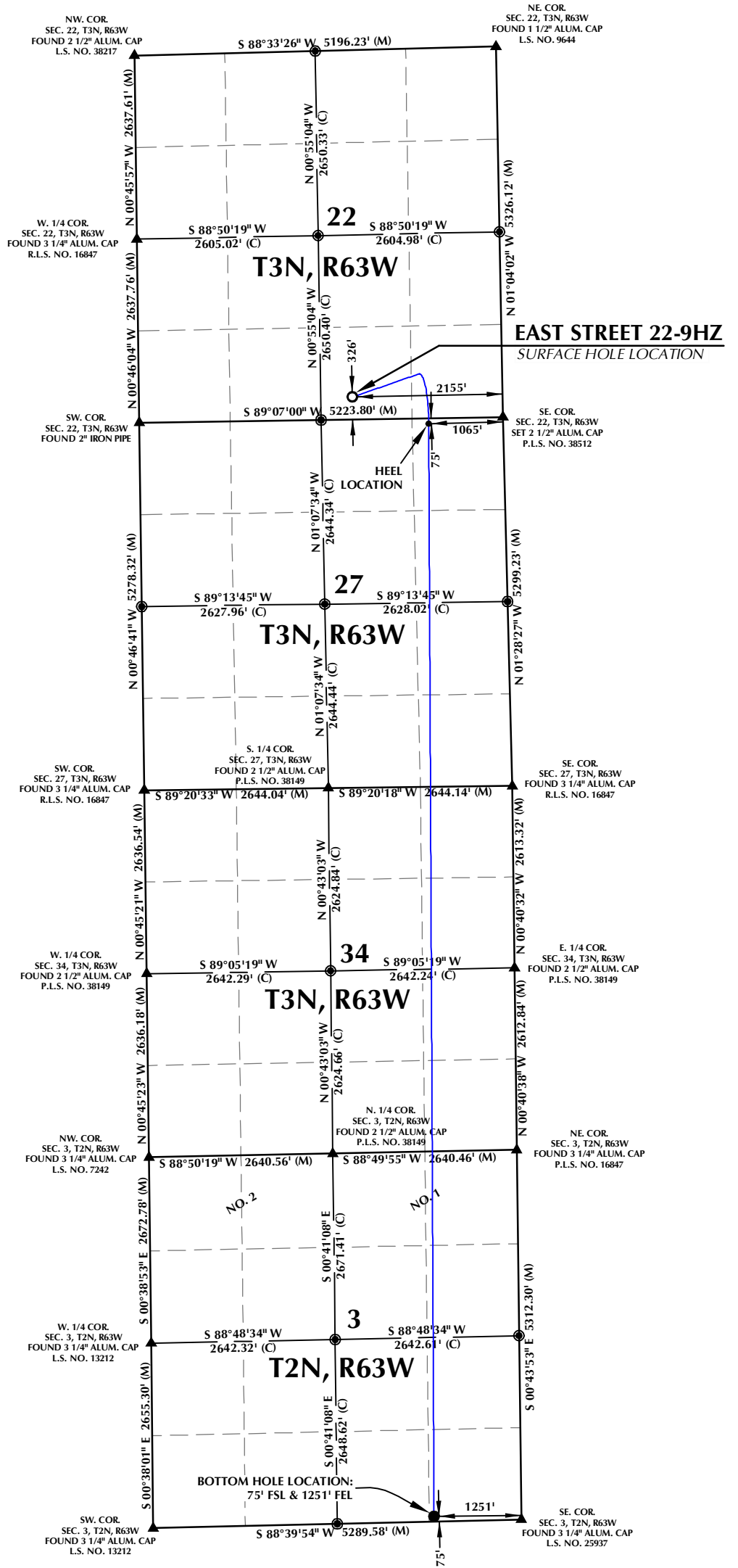


SURFACE HOLE LOCATION: NAD 83
 GROUND ELEVATION= 4749.5'
 LATITUDE= 40.204529°
 LONGITUDE= -104.422169°
 LONGITUDE= 40°12'16.305"
 LONGITUDE= -104°25'19.808"

HEEL LOCATION: NAD 83
 LATITUDE= 40.203438°
 LONGITUDE= -104.418253°
 LONGITUDE= 40°12'12.376"
 LONGITUDE= -104°25'05.712"

BOTTOM HOLE LOCATION: NAD 83
 LATITUDE= 40.160346°
 LONGITUDE= -104.418665°
 LONGITUDE= 40°09'37.244"
 LONGITUDE= -104°25'07.196"

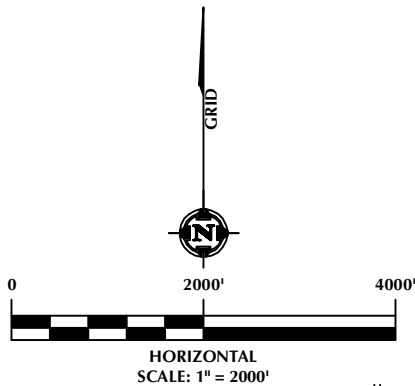


CERTIFICATE OF SURVEYOR:

THIS IS TO CERTIFY THAT THE ABOVE PLAT WAS PREPARED FROM FIELD NOTES OF ACTUAL SURVEYS MADE BY ME OR UNDER MY SUPERVISION AND THAT THE SAME ARE TRUE AND CORRECT TO THE BEST OF MY KNOWLEDGE AND BELIEF. THIS CERTIFICATE DOES NOT REPRESENT A LAND SURVEY PLAT OR IMPROVEMENT SURVEY PLAT AS DEFINED BY C.R.S. 38-51-102 AND CANNOT BE RELIED UPON TO DETERMINE OWNERSHIP.

Randall K. French
 RANDALL K. FRENCH
 PROFESSIONAL LAND SURVEYOR
 COLORADO REGISTRATION NUMBER 38512
 7/1/25

NOTICE: ACCORDING TO COLORADO STATE LAW YOU MUST COMMENCE A LEGAL ACTION BASED UPON ANY DEFECT IN THIS SURVEY WITHIN THREE YEARS FROM THE DATE YOU FIRST DISCOVER SUCH DEFECT. IN NO EVENT MAY ANY ACTION BASED UPON ANY DEFECT IN THIS SURVEY BE COMMENCED MORE THAN TEN YEARS FROM THE DATE ON THE CERTIFICATION SHOWN HEREON.



NOTES:

- ▲ INDICATES SECTION CORNER.
- INDICATES CALCULATED CORNER.
- ELEVATION BASED ON NAVD88 (GEOID18).
- BASIS OF BEARINGS DERIVED FROM COLORADO COORDINATE SYSTEM OF 1983, NORTH ZONE.
- ALL MEASURED DISTANCES ARE GRID. COMBINED SCALE FACTOR: .99973106 CALCULATED FROM THE SW. CORNER OF SECTION 22, T3N, R63W.
- OPERATOR: RYAN GROVES / PDOP = 1.2 / STAKING DATE: 2/14/23
- WELL FOOTAGES ARE MEASURED AT RIGHT ANGLES TO THE SECTION LINES.

WELL PAD - EAST STREET 14-22HZ

EAST STREET 22-9HZ
 WELL LOCATION CERTIFICATE
 326' FSL & 2155' FEL (SWSE) (SURFACE HOLE LOCATION)
 LOCATED IN SECTION 22
 75' FNL & 1065' FEL (NENE) (HEEL LOCATION)
 LOCATED IN SECTION 27
 T3N, R63W, 6TH P.M.
 75' FSL & 1251' FEL (SESE) (BOTTOM HOLE LOCATION)
 LOCATED IN SECTION 3
 T2N, R63W, 6TH P.M.
 WELD COUNTY, COLORADO

Kerr-McGee Oil & Gas Onshore LP
 1099 18th Street
 Denver, Colorado 80202



CONSULTING, LLC

SHERIDAN OFFICE
 1095 Saberton Avenue
 Sheridan, Wyoming 82801
 Phone 307-674-0609

LOVELAND OFFICE
 6706 North Franklin Avenue
 Loveland, Colorado 80538
 Phone 970-776-4331

DRAFTED BY:	SJM	CHECKED BY:	RKF
DATE DRAFTED:	7/1/25	DATE SURVEYED:	5/7/25
REVISED:		FILE NAME:	17-197