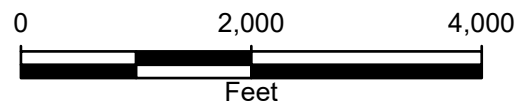


**Legend**

 Site Location



**FIGURE 1**  
**SITE LOCATION MAP**  
**RURAL 21-31-AL**  
**SENW SEC 31-T4N-R65W**  
**WELD, COLORADO**

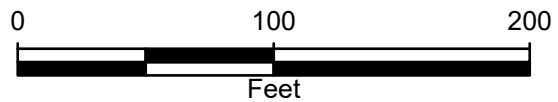




ESRI, HERE, Garmin

**Legend**

- Plugged and Abandoned Well
- Cardinal Direction Photo Locations
- Cardinal Direction Photos Taken 150' from Well



**FIGURE 2**  
**SITE MAP**  
**RURAL 21-31-AL**  
**SENW SEC 31-T4N-R65W**  
**WELD, COLORADO**



### FIGURE 3: PHOTOGRAPHIC LOG



Photograph 1: View facing north as required in Energy and Carbon Management Commission (ECMC) Rule 1004.  
Photo Taken from GPS 40.272210, -104.706187



Photograph 2: View facing east as required in Energy and Carbon Management Commission (ECMC) Rule 1004.  
Photo Taken from GPS 40.272560, -104.706599



### FIGURE 3: PHOTOGRAPHIC LOG



Photograph 3: View facing south as required in Energy and Carbon Management Commission (ECMC) Rule 1004.  
Photo Taken from GPS 40.272908, -104.706192



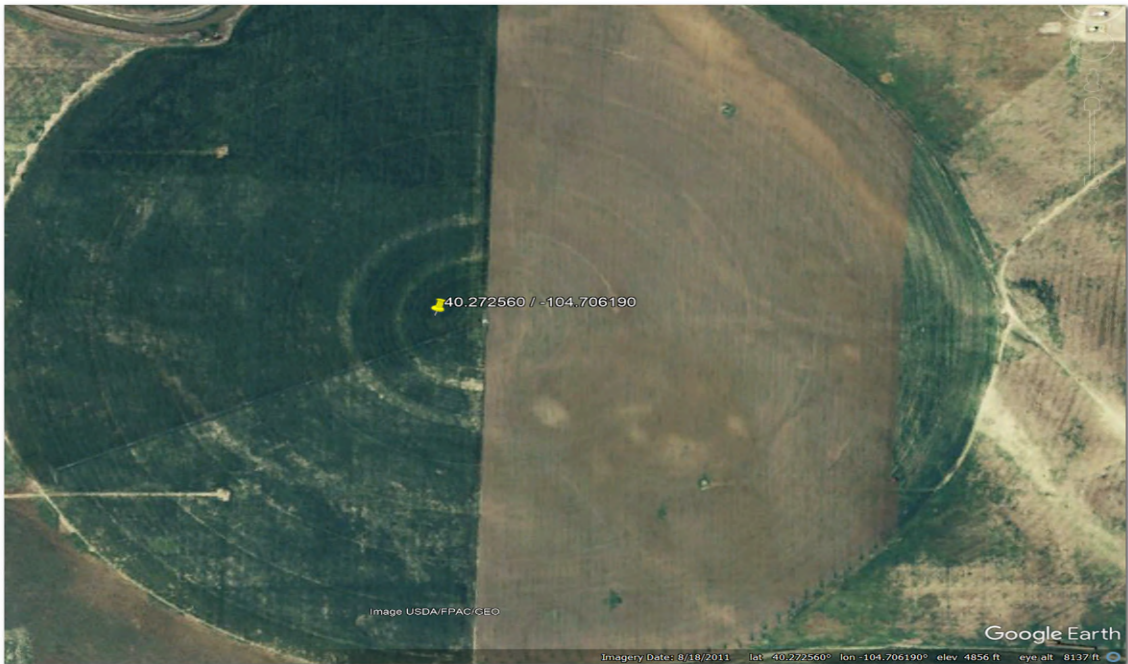
Photograph 4: View facing west as required in Energy and Carbon Management Commission (ECMC) Rule 1004.  
Photo Taken from GPS 40.272561, -104.705780



# Attachments: Historic Imagery



Imagery Date: March 11, 2010



Imagery Date: August 18, 2011

Site Name: Rural 21-31 AL  
Imagery Source: Google Earth



## Attachments: Historic Imagery



Imagery Date: February 4, 2025

Site Name: Rural 21-31 AL  
Imagery Source: Google Earth

