

Legend

○ Site Location

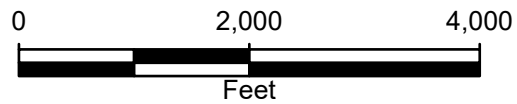
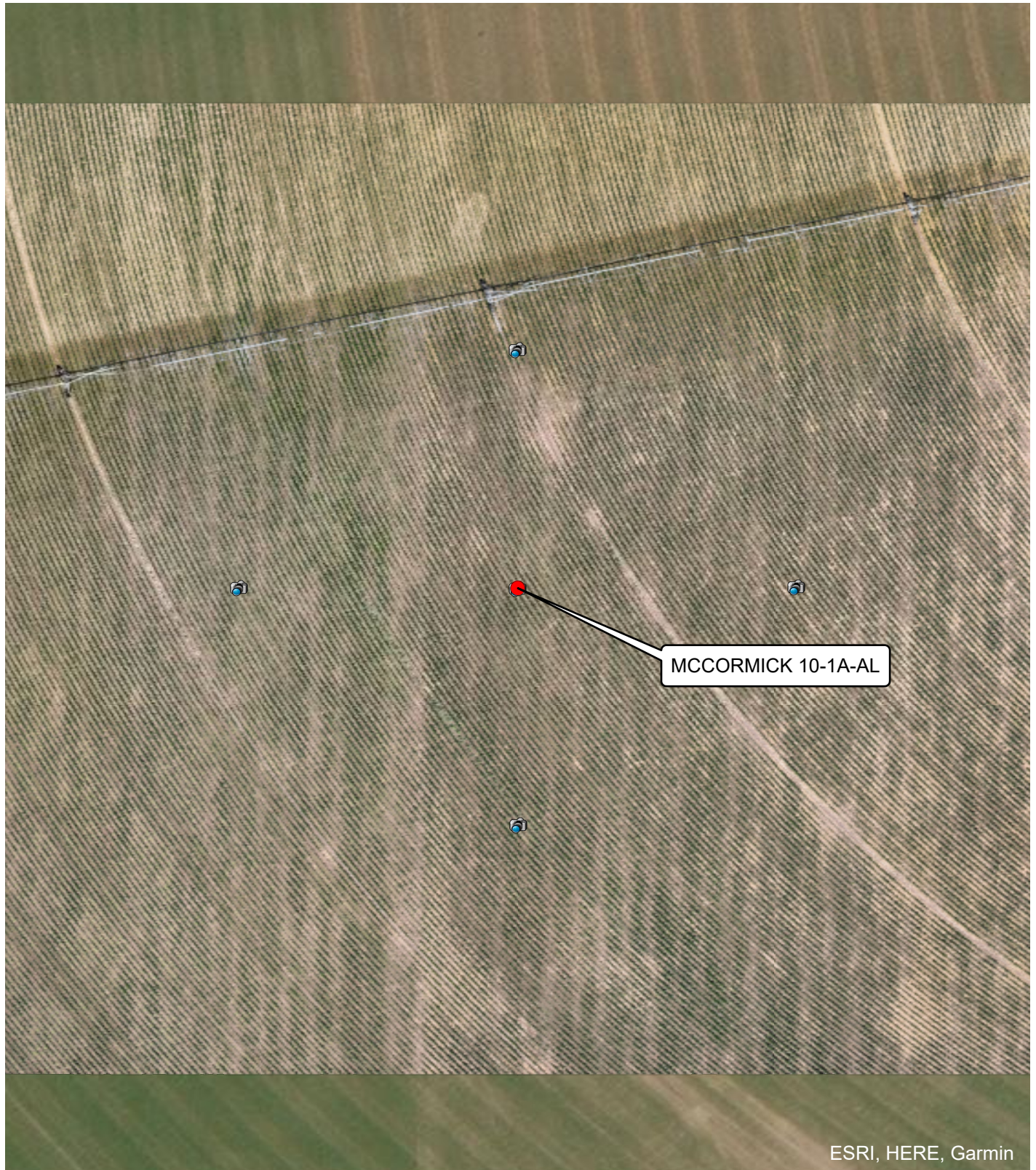


FIGURE 1
SITE LOCATION MAP
MCCORMICK 10-1A-AL
NWSE SEC 1-T3N-R67W
WELD, COLORADO





Legend

- Plugged and Abandoned Well
- Cardinal Direction Photo Locations
- Cardinal Direction Photos Taken 150' from Well

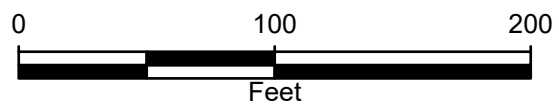


FIGURE 2
 SITE MAP
 MCCORMICK 10-1A-AL
 NWSE SEC 1-T3N-R67W
 WELD, COLORADO



FIGURE 3: PHOTOGRAPHIC LOG



Photograph 1: View facing north as required in Energy and Carbon Management Commission (ECMC) Rule 1004.
Photo Taken from GPS 40.252127, -104.837621



Photograph 2: View facing east as required in Energy and Carbon Management Commission (ECMC) Rule 1004.
Photo Taken from GPS 40.252476, -104.838031



FIGURE 3: PHOTOGRAPHIC LOG



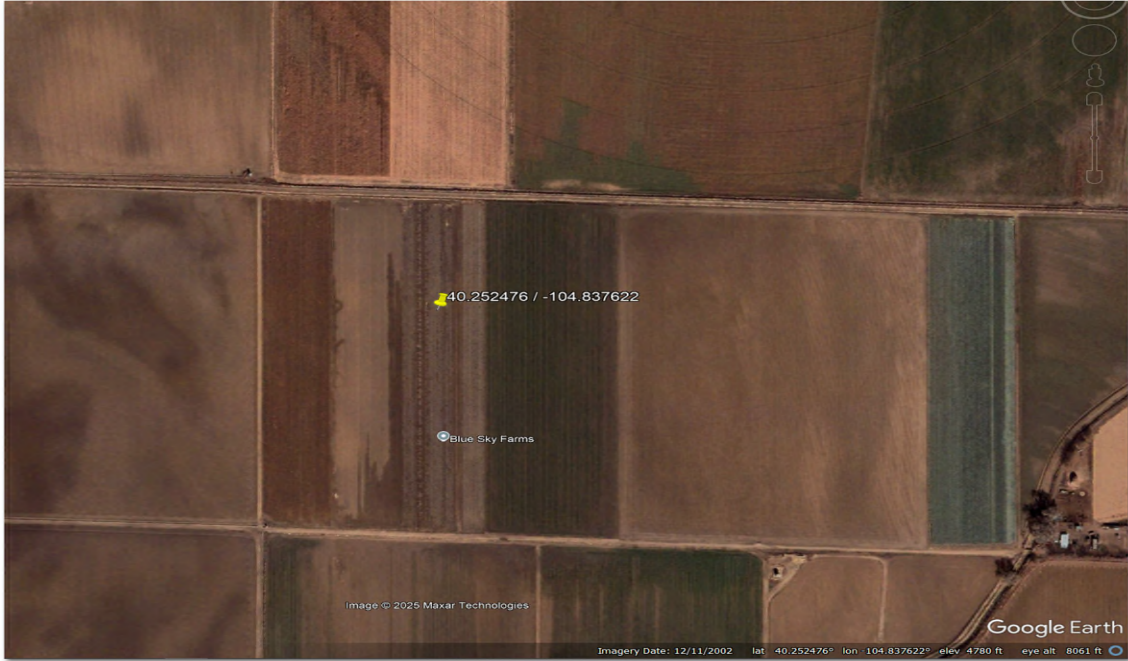
Photograph 3: View facing south as required in Energy and Carbon Management Commission (ECMC) Rule 1004.
Photo Taken from GPS 40.252826, -104.837622



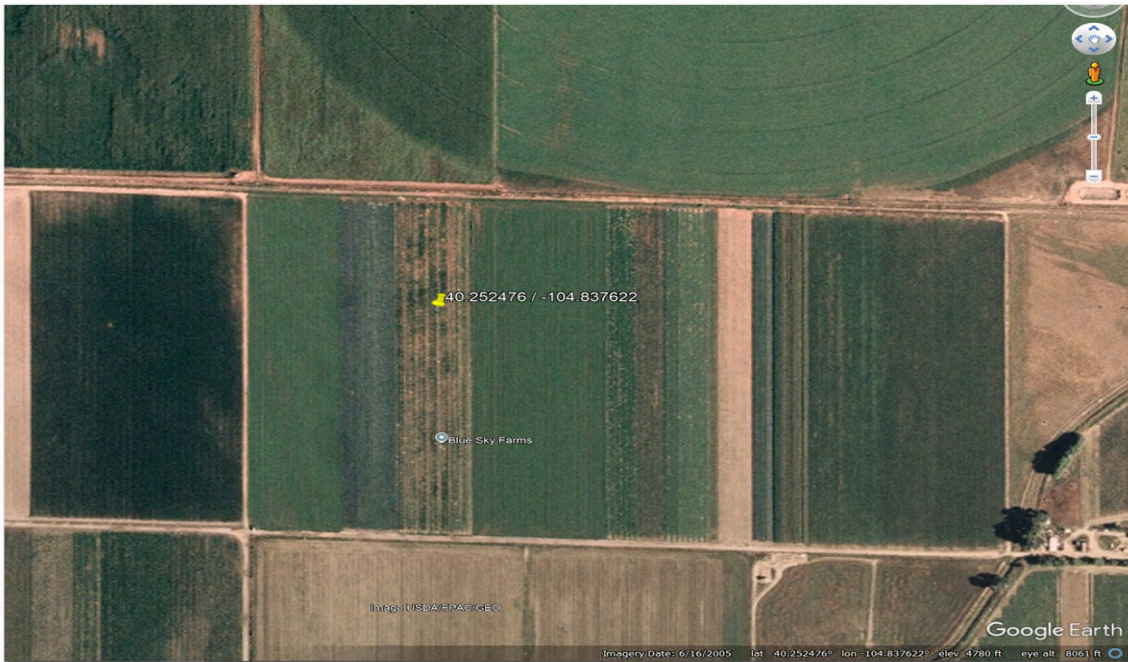
Photograph 4: View facing west as required in Energy and Carbon Management Commission (ECMC) Rule 1004.
Photo Taken from GPS 40.252477, -104.837213



Attachments: Historic Imagery



Imagery Date: December 11, 2002



Imagery Date: June 16, 2005

Site Name: McCormick 10-1A AL
Imagery Source: Google Earth



Attachments: Historic Imagery



Imagery Date: February 4, 2025

Site Name: McCormick 10-1A AL
Imagery Source: Google Earth

Page 2 of 2

