

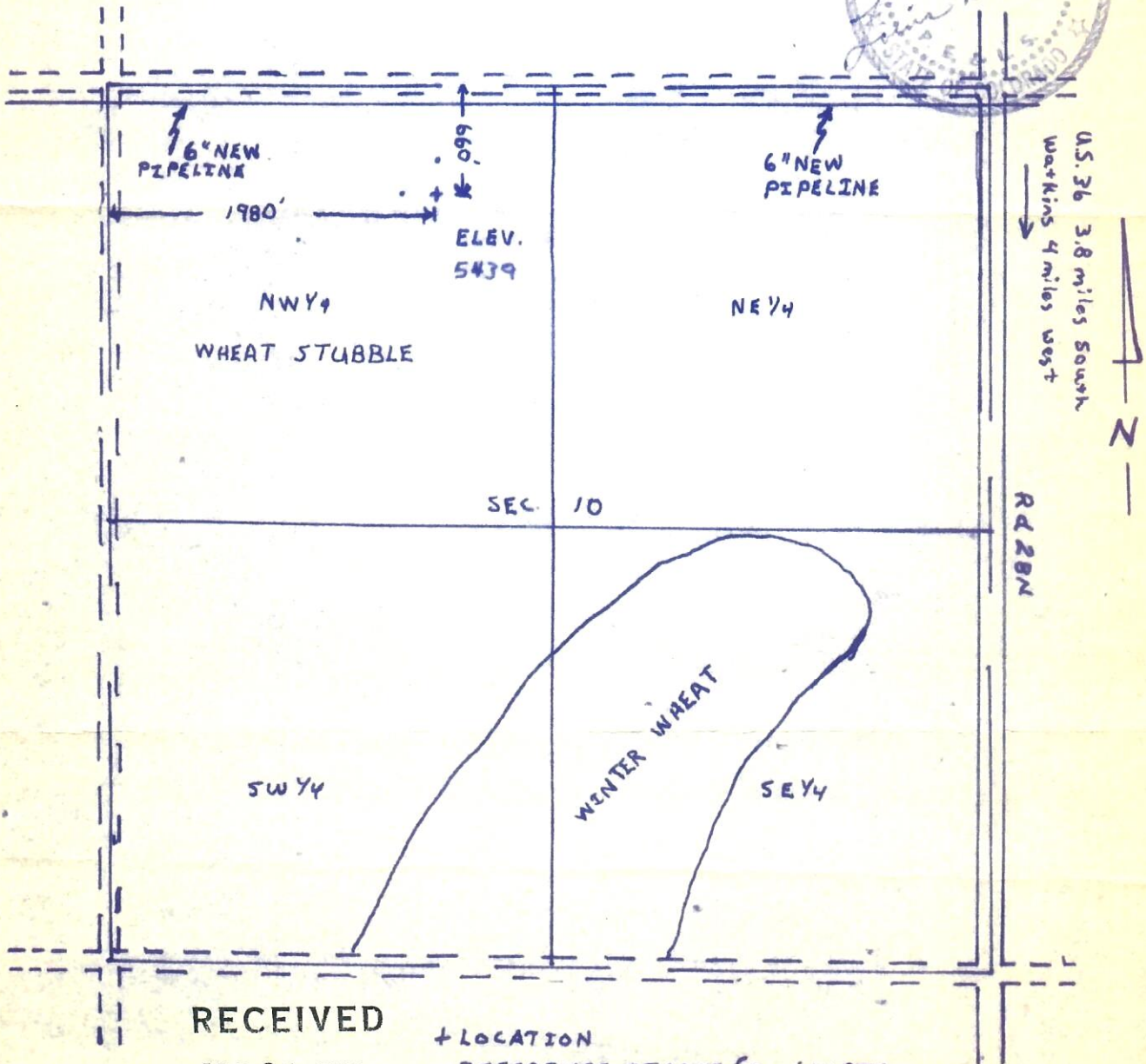
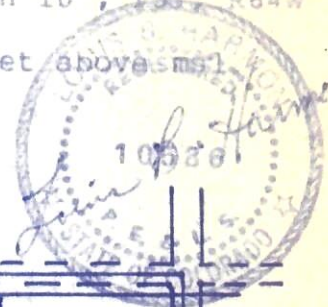


00417423

82-454 RC

I hereby certify that the accompanying plat is an accurate representation of a correct survey showing the location of a proposed well. This location may be described as a point 660 feet south of the north line and 1980 feet east of the west line of Section 10, T3S, R64W of the 6th PM, Adams County, Colorado.

The surface elevation at this point is 5439 feet above msl.



RECEIVED

APR 21 1982

COLORADO OIL & GAS CONS. COM. REG.

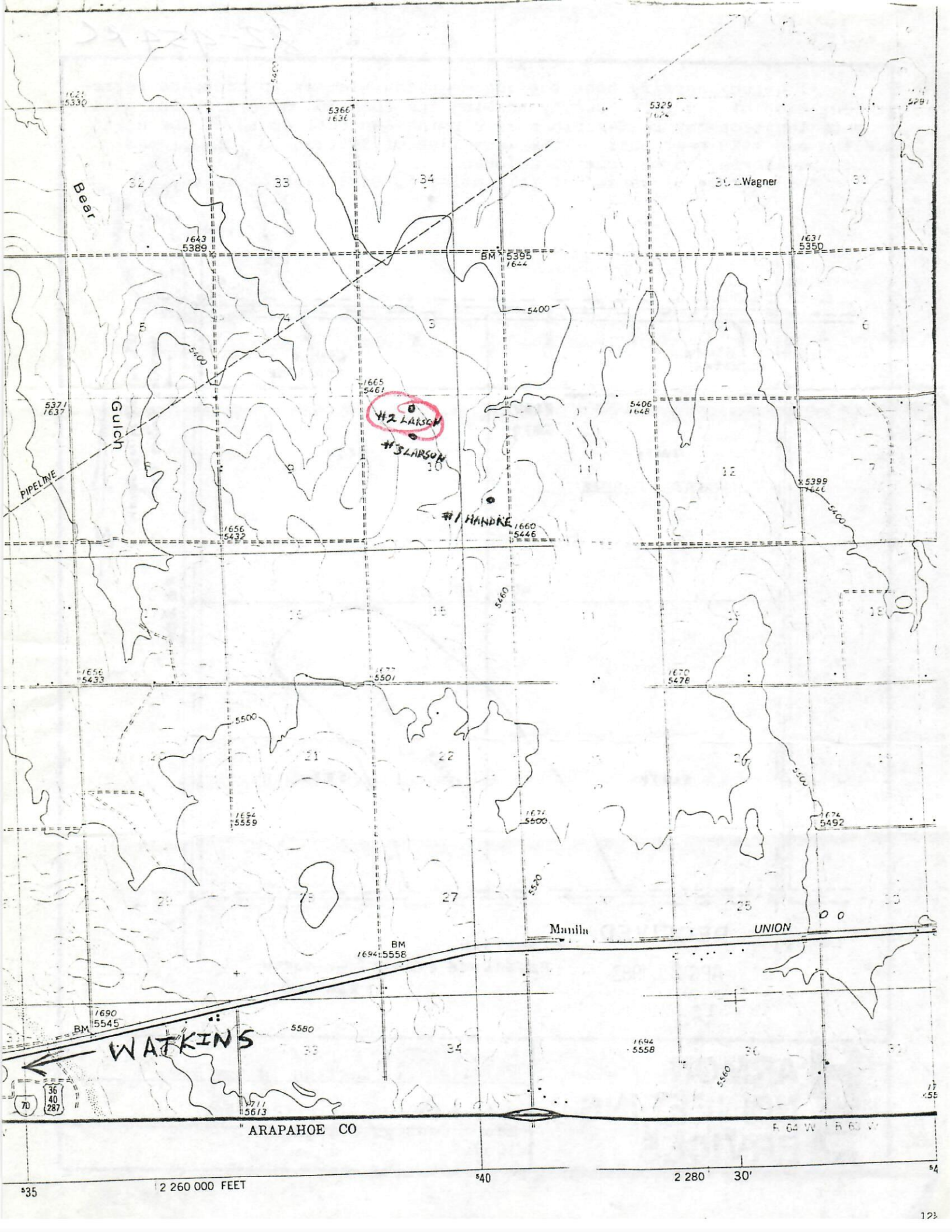
+ LOCATION

• REFERENCE STAKES (200' NORTH, 200' WEST)

**H**ARMON  
ENGINEERING  
SERVICES

MORGAN OIL #2 LARSON  
NE 1/4, NW 1/4, Section 10 T3S R64W

Morgan Oil Co. 16 April 1982  
Adams County, Colorado  
1057-9



Beer

St. Wagner

Gulch

PIPELINE

#2 LARSON

#3 LARSON

#1 HANDE

WATKINS

Mantle

UNION

ARAPAHOE CO

36  
40  
287  
70

2 260 000 FEET

40

2 280 30'

54

535