

Edith Ann-Duckworth 21H-O268

SWSE Sec. 21-T2N-R68W

API #'s: 123-38073 (4A), 123-38348 (4B), 123-38071 (4C)

Remediation Project #: 40395

Form 19 Data Package

July 2025

Prepared by Tasman, Inc.



On behalf of Crestone Peak Resources Operating, LLC



PHOTO LOG



Photographic Log

☉ 349°N (T) ● 40°7'3"N, 105°0'13"W ±16ft ▲ 4911ft			☉ 175°S (T) ● 40°7'3"N, 105°0'13"W ±16ft ▲ 4930ft		
22 Jul 2025 14:34:49			22 Jul 2025 11:35:22		
Equipment ID:		Equipment Type:	Equipment ID:		Equipment Type:
Material:	Volume:	Contents:	Material:	Volume:	Contents:
Notes/Conditions: Soil sampling locations			Notes/Conditions: Soil sampling locations		



Photographic Log

<p>Equipment ID: _____ Equipment Type: _____</p>			<p>Equipment ID: _____ Equipment Type: _____</p>		
Material: _____	Volume: _____	Contents: _____	Material: _____	Volume: _____	Contents: _____
Notes/Conditions: Soil sampling location			Notes/Conditions: Soil sampling locations		



Photographic Log

343°N (T) ● 40°7'3"N, 105°0'13"W ±16ft ▲ 4930ft			75°E (T) ● 40°7'3"N, 105°0'13"W ±16ft ▲ 4930ft		
<small>22 Jul 2025 11:34:45</small>			<small>22 Jul 2025 11:35:45</small>		
Equipment ID:		Equipment Type:	Equipment ID:		Equipment Type:
Material:	Volume:	Contents:	Material:	Volume:	Contents:
Notes/Conditions: Soil sampling locations			Notes/Conditions: Soil sampling location		



Photographic Log

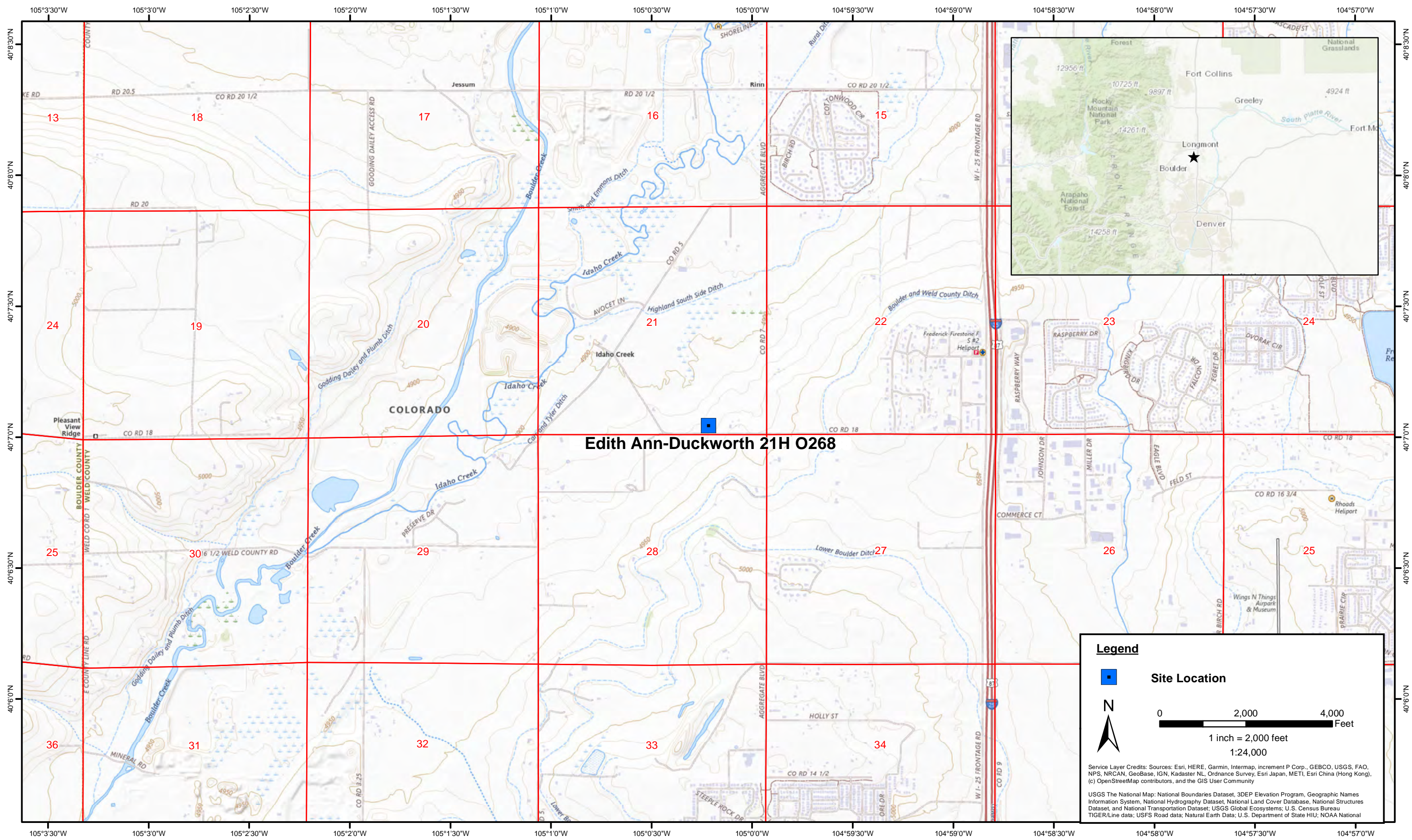
175°S (T) ● 40°7'3"N, 105°0'13"W ±16ft ▲ 4929ft			348°N (T) ● 40°7'3"N, 105°0'13"W ±16ft ▲ 4930ft		
<small>22 Jul 2025 11:36:46</small>			<small>22 Jul 2025 11:33:57</small>		
Equipment ID:		Equipment Type:	Equipment ID:		Equipment Type:
Material:	Volume:	Contents:	Material:	Volume:	Contents:
Notes/Conditions: Soil sampling locations			Notes/Conditions: Soil sampling locations		



Photographic Log

<p> NW 330 N 0 NE 30 60 E 90 120 SE 42°NE (T) 40°7'3"N, 105°0'13"W ±16ft ▲ 4929ft X 4C-FL-B01@4' 22 Jul 2025 11:36:20 </p>					
Material:	Volume:	Contents:	Material:	Volume:	Contents:
Notes/Conditions: Soil sampling location			Notes/Conditions:		

FIGURES



Edith Ann-Duckworth 21H O268

Legend

Site Location

N

0 2,000 4,000 Feet

1 inch = 2,000 feet
1:24,000

Service Layer Credits: Sources: Esri, HERE, Garmin, Intermap, increment P Corp., GEBCO, USGS, FAO, NPS, NRCAN, GeoBase, IGN, Kadaster NL, Ordnance Survey, Esri Japan, METI, Esri China (Hong Kong), (c) OpenStreetMap contributors, and the GIS User Community

USGS The National Map: National Boundaries Dataset, 3DEP Elevation Program, Geographic Names Information System, National Hydrography Dataset, National Land Cover Database, National Structures Dataset, and National Transportation Dataset; USGS Global Ecosystems; U.S. Census Bureau TIGER/Line data; USFS Road data; Natural Earth Data; U.S. Department of State HIU; NOAA National

DATE:	July 2025
DESIGNED BY:	S. Vogt
DRAWN BY:	J. Woffinden

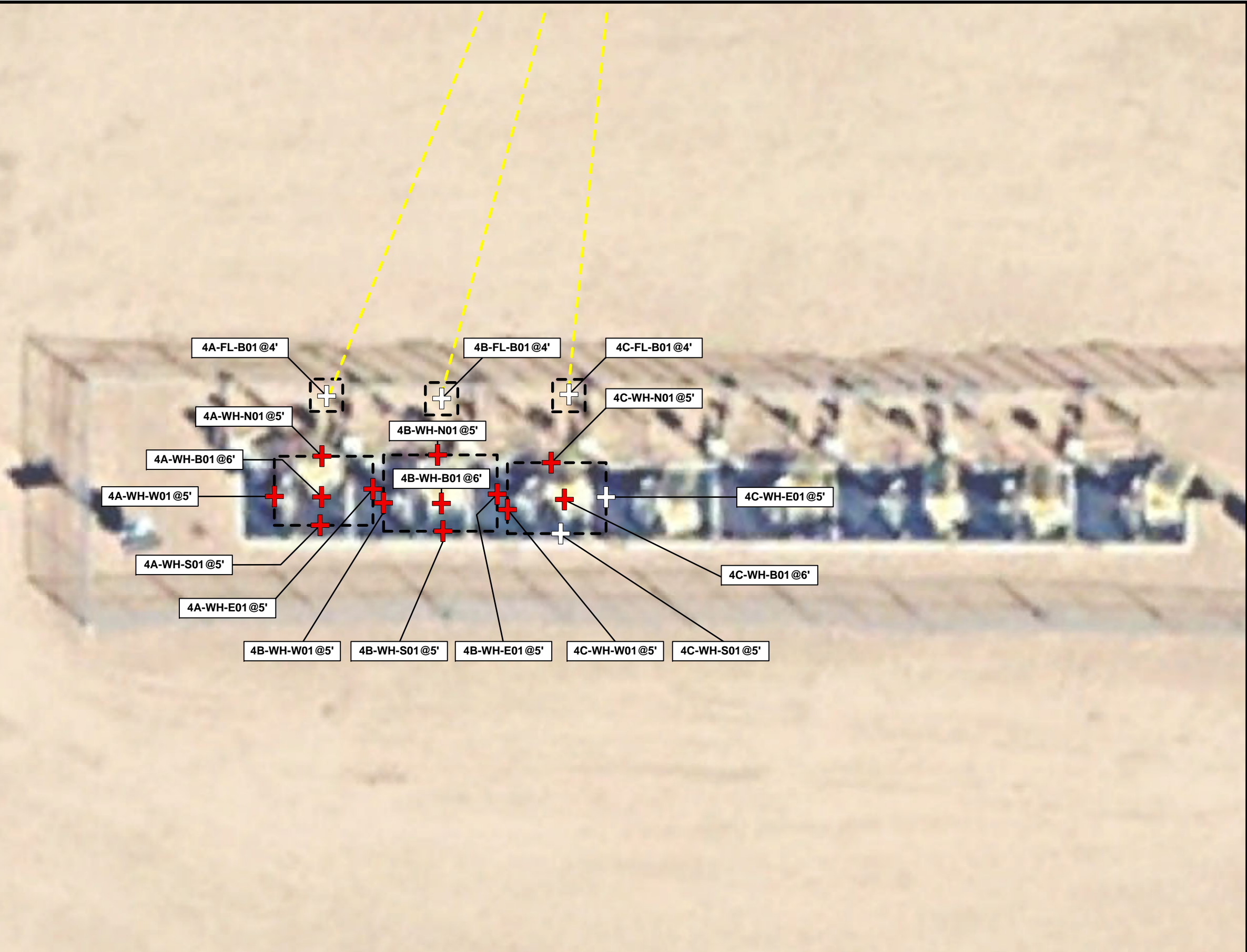


Tasman, Inc.
4725 Independence St.
Wheat Ridge, CO 80033

Crestone Peak Resources Operating, LLC
Edith Ann-Duckworth 21H-O268
SWSE Sec. 21-T2N-R68W
Weld County, Colorado

Site Location Map

Figure
1



Legend

- Soil sample location – Submitted for Laboratory Analysis (Collected via Trimble GPS)
- Soil sample location – Submitted for Laboratory Analysis – Elevated PID Readings, HC Staining, and/or HC Odor (Collected via Trimble GPS)
- Excavation extent (Collected via Trimble GPS)
- Flowline Location

Notes

Crestone Peak Resources Operating, LLC site infrastructure has been partially removed.

All locations are approximate unless otherwise noted.

GPS = Global Positioning System
 PID = Photoionization Detector
 HC = Hydrocarbon

0 ft. 10 ft. 20 ft.

Image Source: Google Earth

DATE:	September 19, 2023
DESIGNED BY:	S. Vogt
DRAWN BY:	S. Vogt



Tasman, Inc.
 4725 Independence St.
 Wheat Ridge, CO 80033

Crestone Peak Resources Operating, LLC
 Edith Ann-Duckworth 21H-O268
 SWSE Sec. 21-T2N-R68W
 Weld County, Colorado

Wellhead Soil Sample
 Location Map
 (07/22/2025)

Figure
 2