

July 22, 2025

Kathy Vertiz
Contract EHS Specialist
QB Energy Operating, LLC

Via email: KVertiz@qb-energy.com
cc: bmiddleton@qb-energy.com

RE: D12 Support Facility Vegetation Monitoring Summary

Dear Kathy,

Per your request, WestWater biologists have completed vegetation monitoring for the above referenced reclaimed location. We utilized the Bureau of Land Management's (BLM) Assessment, Inventory, and Monitoring (AIM) strategy for data collection and the resulting data has been entered into the Database for Inventory, Monitoring and Assessment (DIMA). In addition to monitoring the reclaimed area we selected and inventoried a reference site for this location.

Attached you will find the results summary and photos of the reclaim and reference areas. Based on the information we collected this year and our understanding of BLM and Colorado Energy and Carbon Management Commission (ECMC) final reclamation requirements, this site meets the 80% reference criteria for Final Abandonment Notice. The table below is a summary of the vegetation monitoring effort.

Percent Cover Summary for the D12 Support Facility Final Reclaim Site

	Reference Site	Reclaim Site
Total Percent Foliar Cover	58	68.6
Total Percent Desirable Foliar Cover	57	68.0
Total Percent Basal Cover	4	0
Percent Bare Ground	31	13.3
% Desirable Cover of Reference Site	119	
Site Meets 80% of Reference Criteria		

No State A or B listed noxious weed species were observed at the location during the monitoring effort. The site appears in stable condition and desirable seeded species appear to be well established.

If there is any additional information we can provide or clarify please contact me.

Sincerely,



Amie Wilsey
Principal Environmental Scientist

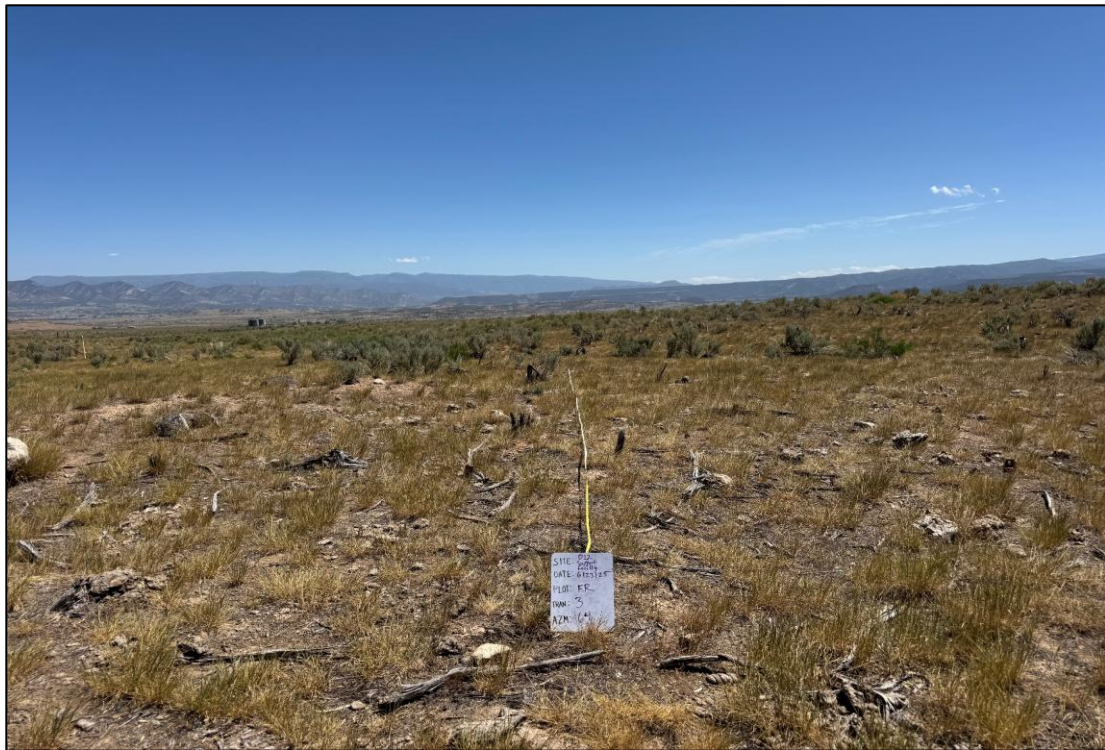
Attachments

**D12 Support Facility Final Reclaim Site
Average Percent Cover by Species**

Code	Scientific	Common	Percent Foliar Cover	Percent Basal Cover
Annual/Biennial				
ALDE	<i>Alyssum desertorum</i>	desert madwort	0.0	0.0
B RTE	<i>Bromus tectorum</i>	cheatgrass	0.7	0.0
Total Annual/Biennial			0.7	0.0
Perennial				
AGCR	<i>Agropyron cristatum</i>	crested wheatgrass	62.7	0.0
ARTRW8	<i>Artemisia tridentata</i> ssp. <i>wyomingensis</i>	Wyoming big sagebrush	2.7	0.0
ASCO12	<i>Astragalus convallarius</i>	lesser rushy milkvetch	1.3	0.0
ERNA10	<i>Ericameria nauseosa</i>	rubber rabbitbrush	1.3	0.0
Total Perennial			68.0	0
Total Cover			68.6	0
Percent Bare Ground			13.3	
Total Litter Between Cover			18.1	

Red = Undesirable Species





**D12 Support Facility Reference Site
Average Percent Cover by Species**

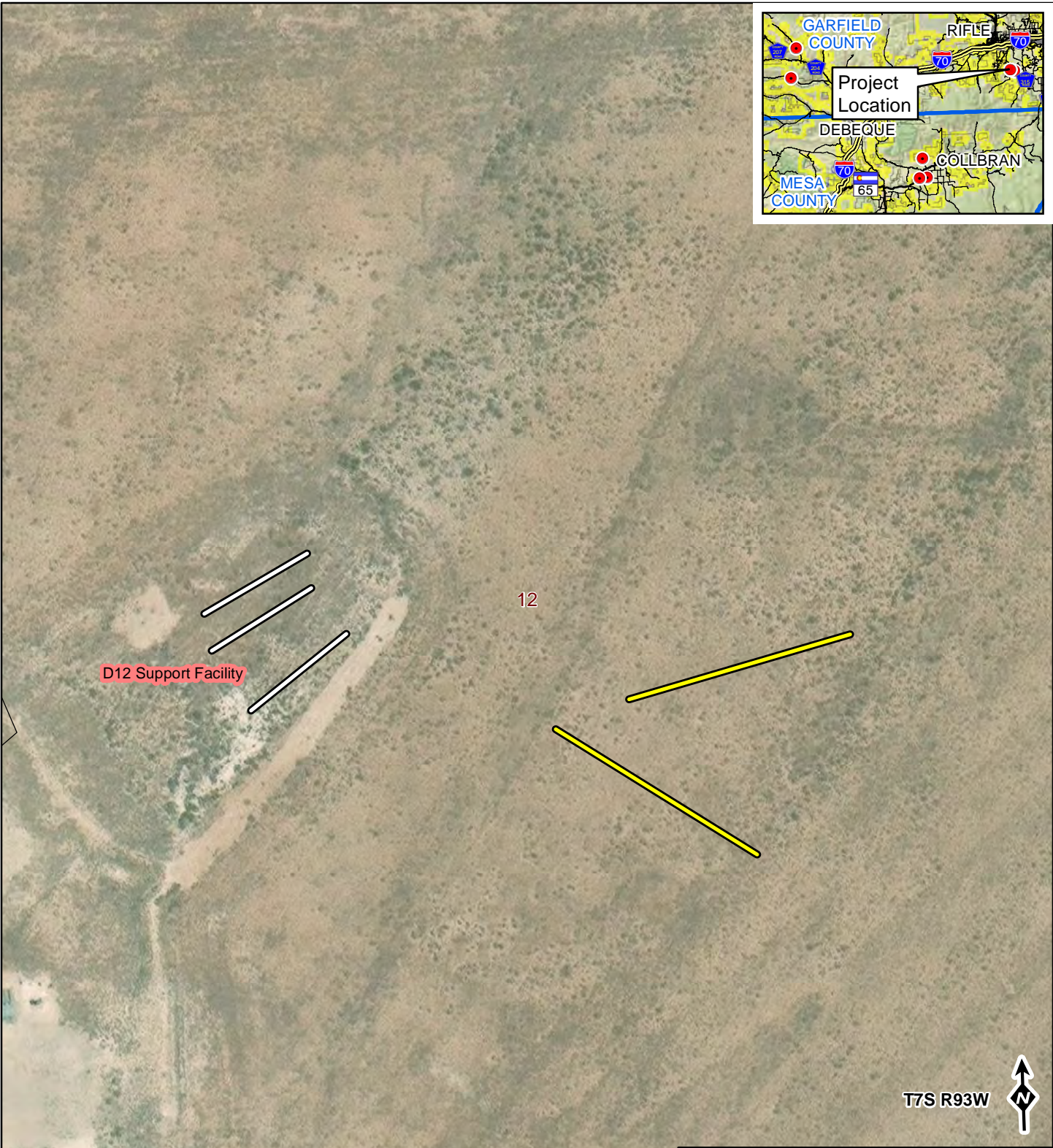
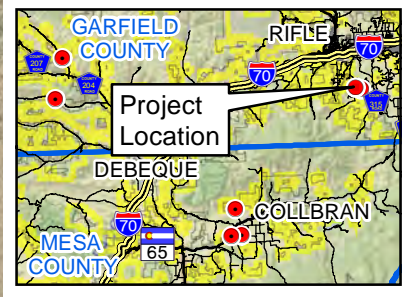
Code	Scientific	Common	Percent Foliar Cover	Percent Basal Cover
Annual/Biennial				
ALDE	<i>Alyssum desertorum</i>	desert madwort	1	0
Total Annual/Biennial			1	0
Perennial				
AGCR	<i>Agropyron cristatum</i>	crested wheatgrass	49	4
ARTRW8	<i>Artemisia tridentata</i> ssp. <i>wyomingensis</i>	Wyoming big sagebrush	3	0
ERNA10	<i>Ericameria nauseosa</i>	rubber rabbitbrush	2	0
MESA	<i>Medicago sativa</i>	alfalfa	2	0
PSJU3	<i>Psathyrostachys juncea</i>	Russian wildrye	1	0
Total Perennial			57	4
Total Cover			58	4
Percent Bare Ground			31	
Total Litter Between Cover			11	

Red = Undesirable Species










10/10/10
10/10/10
10/10/10
10/10/10
10/10/10




Legend


-  Pad Transect
-  Reference Transect

Pad Status

-  Final Reclamation Monitoring
-  Interim Reclamation Monitoring
-  Reference Monitoring Location

 BLM

D12 Support Facility
QB Energy
Vegetation Monitoring 2025

 **WestWater Engineering**
 Consulting Engineers & Scientists

0 100 200
 Feet

Map Source: Z:\QB Energy\Reclamation Monitoring\2025 FAN Pads\GIS\FAN Transect Maps 7-22-25\D12 Support Facility.mxd 7/22/2025 rbb