

# **Baker 31-27, 32-27, 4-2-27, 6-4-27**

SWNE Sec. 27-T1N-R68W

API #'s: 014-20658 (Baker 31-27), 014-20657 (Baker 32-27),  
014-20694 (Baker 4-2-27), & 014-20695 (Baker 6-4-27)

Flowline Facility ID's: 473601, 473602, & 485466

Remediation Project #: 38865

Wellhead and Flowline Decommissioning

April 2025

Prepared by Tasman, Inc.



On behalf of Crestone Peak Resources Operating, LLC



# **FIELD NOTES AND PHOTO LOG**



# Civitas Decommissioning Form

<b>SITE NAME:</b> Baker 31-27, 32-27, 4-2-27, 6-4-27							<b>DATE:</b> 4/10/2025	<b>REM. PROJECT #:</b> 38865	<b>WEATHER:</b> 70°F Sunny	
<b>SITE DIRECTIONS:</b> 10th St & W I-25 Frontage Rd, S 0.25 miles, W INTO							<b>CLIENT:</b> Crestone Peak Resources Operating, LLC			
<b>LEGALS AND LAT/LONG:</b> 40.024045, -104.987729							<b>TASMAN PERSONNEL:</b> Dan Tyson			
<b>SOIL TYPES:</b> CL - lean clay							<b>SURFACE GRADIENT:</b> North			
<b>SURROUNDING LAND USE:</b> Other							<b>CROP:</b> N/A			
SOIL SAMPLING							FACILITY INFRASTRUCTURE			
Date/Time	Soil Sample ID	PID (ppm)	Visual	Olfactory	Photo? (Y/N)	USCS	Lab (Y/N)	EQUIPMENT	Quantity	
								Above Ground Storage Tank (AST)		
4/10/2025 14:30	6-4-WH-B01@6'	4.2	No Staining	No Odor	Y	CL	Y	Produced Water Vessel (PWV)		
4/10/2025 14:35	4-2-WH-B01@6'	4.1	No Staining	No Odor	Y	CL	Y	Separator (SEP)		
4/10/2025 14:40	31-WH-B01@6'	3.5	No Staining	No Odor	Y	CL	Y	Emission Control Device (ECD)		
4/10/2025 14:45	32-WH-B01@6'	4.4	No Staining	No Odor	Y	CL	Y	Dump Line (DL)		
4/10/2025 14:50	6-4-WH-N01@5'	4.6	No Staining	No Odor	Y	CL	N	Wellhead (WH)	4	
4/10/2025 14:55	6-4-WH-S01@5'	6.1	No Staining	No Odor	Y	CL	N	Flowline (FL)	4	
4/10/2025 15:00	6-4-WH-W01@5'	1.6	No Staining	No Odor	Y	CL	N	FL Method of Closure	Removed	
4/10/2025 15:05	4-2-WH-N01@5'	4.8	No Staining	No Odor	Y	CL	N	FL Footage Removed	6,240	
4/10/2025 15:10	4-2-WH-S01@5'	4.0	No Staining	No Odor	Y	CL	N	Footaged Abandoned in Place		
4/10/2025 15:20	31-WH-N01@5'	0.7	No Staining	No Odor	Y	CL	N	Other:		
4/10/2025 15:25	31-WH-S01@5'	4.4	No Staining	No Odor	Y	CL	N	Soil Loads Removed		
4/10/2025 15:30	32-WH-N01@5'	4.7	No Staining	No Odor	Y	CL	N	IMPACTED SOIL IDENTIFIED? Yes		
4/10/2025 15:35	32-WH-S01@5'	4.5	No Staining	No Odor	Y	CL	N	ESTIMATED VOLUME OF IMPACTS: Ongoing site assessment activities		
4/10/2025 15:40	32-WH-E01@5'	5.6	No Staining	No Odor	Y	CL	N	Date	Number	CY
4/10/2025 15:45	6-4-FL-B01@5'	3.2	No Staining	No Odor	Y	CL	Y			
4/10/2025 15:50	4-2-FL-B01@5'	2.7	No Staining	No Odor	Y	CL	Y			
4/10/2025 15:55	31-FL-B01@5'	4.4	No Staining	No Odor	Y	CL	Y			
4/10/2025 16:00	32-FL-B01@5'	3.4	No Staining	No Odor	Y	CL	Y			
4/10/2025 16:05	SP-CS01	4.3	No Staining	No Odor	Y	CL	Y	Total Removed	0	0
4/11/2025 08:30	6-4-FL-B02@3'	1.4	No Staining	No Odor	Y	CL	N	Disposal Facility:		
4/11/2025 08:35	4-2, 31-FL-B02@3'	2.8	No Staining	No Odor	Y	CL	N	Groundwater Recovery		
4/11/2025 08:40	32-FL-B02@4'	3.4	No Staining	No Odor	Y	CL	N	DATE GW ENCOUNTERED: 04/11/2025	DEPTH: 4'	
4/11/2025 08:45	FL-B03@4'	0.9	No Staining	No Odor	Y	CL	N	GROUNDWATER IN CONTACT WITH IMPACTED SOIL? Impacts found in groundwater, soil not impacted		
4/11/2025 08:50	FL-B04@4'	2.4	No Staining	No Odor	Y	CL	N			
4/11/2025 08:55	FL-B05@4'	1.1	No Staining	No Odor	Y	CL	N	LNAPL OR SHEEN OBSERVED ON GW? No		
GROUNDWATER SAMPLING							Date	BBLs		
Date/Time	Groundwater Sample ID	Depth Collected	Turbid?	Sheen?	Odor?	Photo?				
4/11/2025 10:35	GW01	4'	Clear	None	None	Yes				
4/11/2025 10:40	GW02	4'	Low Turbidity	None	None	Yes				
4/11/2025 10:45	GW03	4'	Clear	None	None	Yes		Total Removed	0	
4/11/2025 10:50	GW04	4'	Clear	None	None	Yes		Disposal Facility:		





# Photographic Log

<p>☀ 357°N (T) ● 40°1'26"N, 104°59'16"W ±16ft ▲ 5227ft</p>			<p>☀ 2°N (T) ● 40°1'26"N, 104°59'15"W ±16ft ▲ 5227ft</p>				
<b>Equipment ID:</b>		<b>Equipment Type:</b>		<b>Equipment ID:</b>		<b>Equipment Type:</b>	
<b>Material:</b>	<b>Volume:</b>	<b>Contents:</b>		<b>Material:</b>	<b>Volume:</b>	<b>Contents:</b>	
<b>Notes/Conditions:</b> Soil sampling and screening locations				<b>Notes/Conditions:</b> Soil sampling and screening locations			



# Photographic Log

<p>8°N (T) ● 40°1'26"N, 104°59'15"W ±16ft ▲ 5228ft</p> <p>10 Apr 2025 16:03:52</p>			<p>6-4-FL-B02@4'</p> <p>11 Apr 2025 09:36:04</p>				
<b>Equipment ID:</b>		<b>Equipment Type:</b>		<b>Equipment ID:</b>		<b>Equipment Type:</b>	
<b>Material:</b>		<b>Volume:</b>		<b>Material:</b>		<b>Volume:</b>	
<b>Contents:</b>				<b>Contents:</b>			
<b>Notes/Conditions:</b> Soil sampling and screening locations				<b>Notes/Conditions:</b> Soil screening locations			



# Photographic Log

<p>☉ 16°N (T) ● 40°1'27"N, 104°59'15"W ±16ft ▲ 5223ft</p>			<p>☉ 6°N (T) ● 40°1'27"N, 104°59'15"W ±16ft ▲ 5223ft</p>		
<p>11 Apr 2025, 08:36:13</p>			<p>11 Apr 2025, 08:36:21</p>		
<b>Equipment ID:</b>		<b>Equipment Type:</b>	<b>Equipment ID:</b>		<b>Equipment Type:</b>
<b>Material:</b>	<b>Volume:</b>	<b>Contents:</b>	<b>Material:</b>	<b>Volume:</b>	<b>Contents:</b>
<b>Notes/Conditions:</b> Soil screening location			<b>Notes/Conditions:</b> Soil screening location		



# Photographic Log

356°N (T) ● 40°1'28"N, 104°59'15"W ±16ft ▲ 5220ft		168°S (T) ● 40°1'29"N, 104°59'15"W ±16ft ▲ 5214ft	
<p style="text-align: center; color: yellow; font-weight: bold; font-size: 24px;">FL-B03@4'</p> <p style="text-align: right; font-size: 10px;">11 Apr 2025 08:43:49</p>	<p style="text-align: center; color: yellow; font-weight: bold; font-size: 24px;">FL-B04@4'</p> <p style="text-align: right; font-size: 10px;">11 Apr 2025 08:49:57</p>		
Equipment ID:	Equipment Type:	Equipment ID:	Equipment Type:
Material:	Volume:	Material:	Volume:
Contents:		Contents:	
Notes/Conditions: Soil screening location		Notes/Conditions: Soil screening location	



# Photographic Log

194°S (T) ● 40°1'30"N, 104°59'15"W ±16ft ▲ 5213ft			230°SW (T) ● 40°1'31"N, 104°59'15"W ±16ft ▲ 5207ft		
Equipment ID:		Equipment Type:	Equipment ID:		Equipment Type:
Material:	Volume:	Contents:	Material:	Volume:	Contents:
Notes/Conditions: Soil screening location. Groundwater sample location			Notes/Conditions: Soil sample location		



# Photographic Log

<p>290°W (T) ● 40°1'31"N, 104°59'14"W ±16ft ▲ 5208ft</p> <p>FL-B07@4'</p> <p>11 Apr 2025, 09:30:53</p>			<p>301°NW (T) ● 40°1'32"N, 104°59'13"W ±16ft ▲ 5206ft</p> <p>FL-B08@4'</p> <p>11 Apr 2025, 09:36:10</p>		
Equipment ID:			Equipment ID:		
Equipment Type:			Equipment Type:		
Material:	Volume:	Contents:	Material:	Volume:	Contents:
Notes/Conditions: Soil sample location			Notes/Conditions: Soil screening location		



# Photographic Log

<p>260°W (T) ● 40°1'32"N, 104°59'12"W ±16ft ▲ 5205ft</p> <p><b>6-4,4-2-FL-B09@4'</b></p> <p>11 Apr 2025, 09:43:12</p>			<p>297°NW (T) ● 40°1'32"N, 104°59'12"W ±16ft ▲ 5205ft</p> <p><b>31,32-FL-B09@4'</b></p> <p>11 Apr 2025, 09:45:36</p>				
<b>Equipment ID:</b>		<b>Equipment Type:</b>		<b>Equipment ID:</b>		<b>Equipment Type:</b>	
<b>Material:</b>	<b>Volume:</b>	<b>Contents:</b>		<b>Material:</b>	<b>Volume:</b>	<b>Contents:</b>	
<b>Notes/Conditions:</b> Soil sampling location				<b>Notes/Conditions:</b> Soil sampling location			



# Photographic Log

<p><b>Equipment ID:</b></p>			<p><b>Equipment ID:</b></p>		
<p><b>Equipment Type:</b></p>			<p><b>Equipment Type:</b></p>		
<p><b>Material:</b></p>	<p><b>Volume:</b></p>	<p><b>Contents:</b></p>	<p><b>Material:</b></p>	<p><b>Volume:</b></p>	<p><b>Contents:</b></p>
<p><b>Notes/Conditions:</b> Soil screening location</p>			<p><b>Notes/Conditions:</b> Soil screening location</p>		



# Photographic Log

<p>☉ 268°W (T) ☉ 40°1'32"N, 104°59'10"W ±16ft ▲ 5204ft</p>			<p>☉ 285°W (T) ☉ 40°1'32"N, 104°59'9"W ±16ft ▲ 5204ft</p>		
<p>31,32-FL-B11@4'</p> <p>11 Apr 2025, 10:05:07</p>			<p>FL-B12@4'</p> <p>GW02</p> <p>11 Apr 2025, 10:19:20</p>		
<b>Equipment ID:</b>		<b>Equipment Type:</b>	<b>Equipment ID:</b>		<b>Equipment Type:</b>
<b>Material:</b>	<b>Volume:</b>	<b>Contents:</b>	<b>Material:</b>	<b>Volume:</b>	<b>Contents:</b>
<b>Notes/Conditions:</b> Soil screening location			<b>Notes/Conditions:</b> Soil screening location. Groundwater sample location		



# Photographic Log

<p>☉ 263°W (T) ● 40°1'32"N, 104°59'7"W ±16ft ▲ 5202ft</p>			<p>☉ 315°NW (T) ● 40°1'32"N, 104°59'5"W ±16ft ▲ 5204ft</p>				
<b>Equipment ID:</b>		<b>Equipment Type:</b>		<b>Equipment ID:</b>		<b>Equipment Type:</b>	
<b>Material:</b>	<b>Volume:</b>	<b>Contents:</b>		<b>Material:</b>	<b>Volume:</b>	<b>Contents:</b>	
<b>Notes/Conditions:</b> Soil screening and groundwater sampling location				<b>Notes/Conditions:</b> Soil screening location and groundwater sample location			

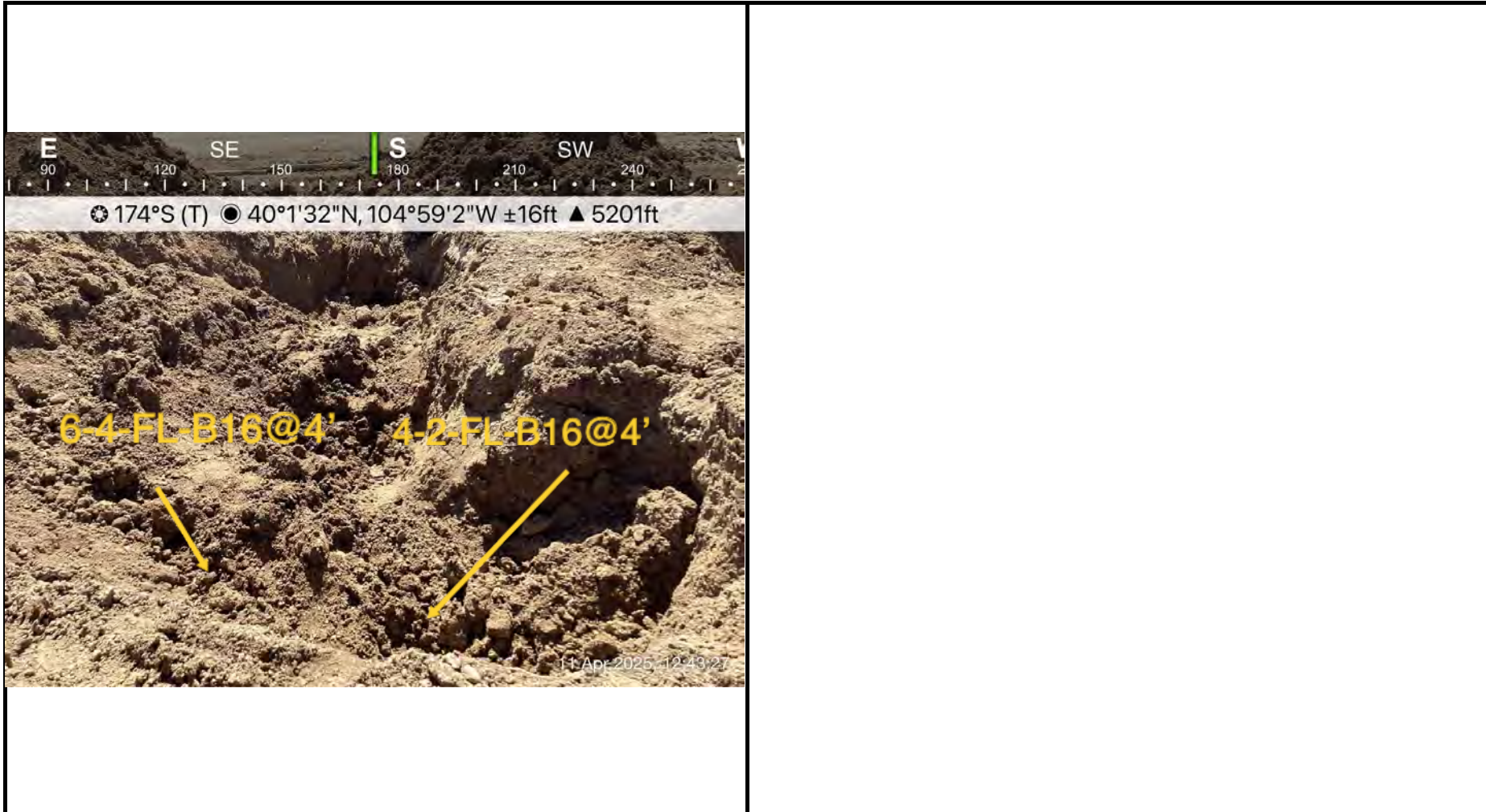


# Photographic Log

302°NW (T) ● 40°1'32"N, 104°59'4"W ±16ft ▲ 5203ft			195°S (T) ● 40°1'32"N, 104°59'2"W ±16ft ▲ 5201ft		
11 Apr 2025 10:52:20			11 Apr 2025 12:43:18		
<b>Equipment ID:</b>		<b>Equipment Type:</b>	<b>Equipment ID:</b>		<b>Equipment Type:</b>
<b>Material:</b>	<b>Volume:</b>	<b>Contents:</b>	<b>Material:</b>	<b>Volume:</b>	<b>Contents:</b>
<b>Notes/Conditions:</b> Soil screening location			<b>Notes/Conditions:</b> Soil sampling locations		

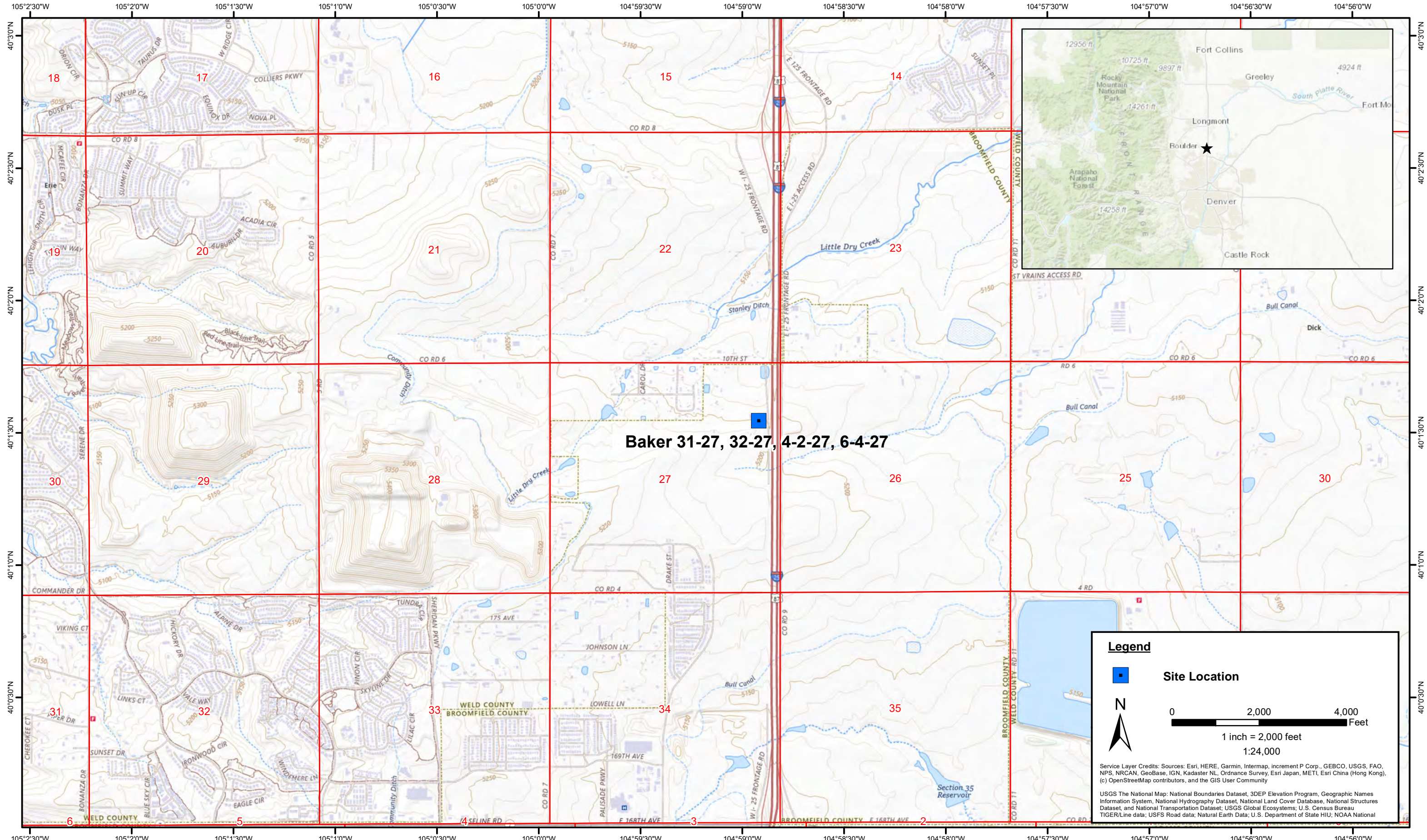


# Photographic Log



<b>Equipment ID:</b>		<b>Equipment Type:</b>		<b>Equipment ID:</b>		<b>Equipment Type:</b>	
<b>Material:</b>		<b>Volume:</b>		<b>Material:</b>		<b>Volume:</b>	
<b>Contents:</b>		<b>Contents:</b>		<b>Contents:</b>		<b>Contents:</b>	
<b>Notes/Conditions:</b> Soil sampling locations				<b>Notes/Conditions:</b>			

# FIGURES



DATE:	April 2025
DESIGNED BY:	S. Vogt
DRAWN BY:	J. Woffinden

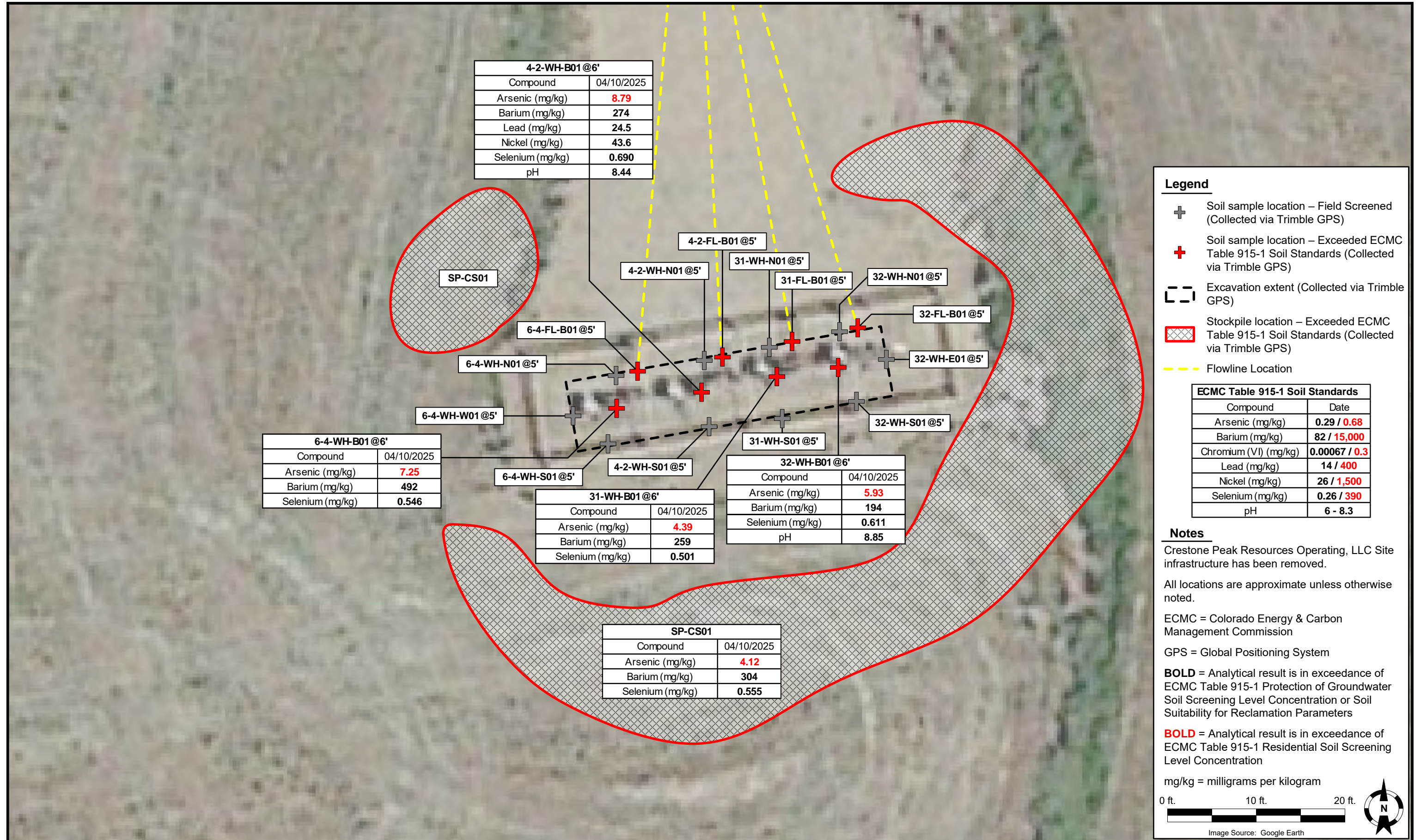


**Tasman, Inc.**  
**4725 Independence St.**  
**Wheat Ridge, CO 80033**

**Crestone Peak Resources Operating, LLC**  
**Baker 31-27, 32-27, 4-2-27, 6-4-27**  
 SWNE Sec. 27-T1N-R68W  
 Broomfield County, Colorado

Site Location Map

Figure  
1



4-2-WH-B01 @6'	
Compound	04/10/2025
Arsenic (mg/kg)	<b>8.79</b>
Barium (mg/kg)	274
Lead (mg/kg)	24.5
Nickel (mg/kg)	43.6
Selenium (mg/kg)	<b>0.690</b>
pH	8.44

6-4-WH-B01 @6'	
Compound	04/10/2025
Arsenic (mg/kg)	<b>7.25</b>
Barium (mg/kg)	492
Selenium (mg/kg)	<b>0.546</b>

31-WH-B01 @6'	
Compound	04/10/2025
Arsenic (mg/kg)	<b>4.39</b>
Barium (mg/kg)	259
Selenium (mg/kg)	<b>0.501</b>

32-WH-B01 @6'	
Compound	04/10/2025
Arsenic (mg/kg)	<b>5.93</b>
Barium (mg/kg)	194
Selenium (mg/kg)	<b>0.611</b>
pH	8.85

SP-CS01	
Compound	04/10/2025
Arsenic (mg/kg)	<b>4.12</b>
Barium (mg/kg)	304
Selenium (mg/kg)	<b>0.555</b>

- Legend**
- ⊕ Soil sample location – Field Screened (Collected via Trimble GPS)
  - ⊕ Soil sample location – Exceeded ECMC Table 915-1 Soil Standards (Collected via Trimble GPS)
  - - - Excavation extent (Collected via Trimble GPS)
  - ⊗ Stockpile location – Exceeded ECMC Table 915-1 Soil Standards (Collected via Trimble GPS)
  - - - Flowline Location

ECMC Table 915-1 Soil Standards	
Compound	Date
Arsenic (mg/kg)	<b>0.29 / 0.68</b>
Barium (mg/kg)	<b>82 / 15,000</b>
Chromium (VI) (mg/kg)	<b>0.00067 / 0.3</b>
Lead (mg/kg)	<b>14 / 400</b>
Nickel (mg/kg)	<b>26 / 1,500</b>
Selenium (mg/kg)	<b>0.26 / 390</b>
pH	6 - 8.3

**Notes**

Crestone Peak Resources Operating, LLC Site infrastructure has been removed.

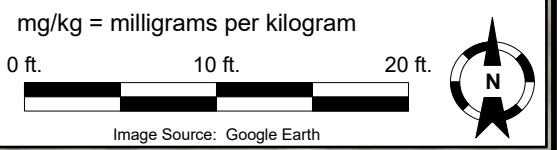
All locations are approximate unless otherwise noted.

ECMC = Colorado Energy & Carbon Management Commission

GPS = Global Positioning System

**BOLD** = Analytical result is in exceedance of ECMC Table 915-1 Protection of Groundwater Soil Screening Level Concentration or Soil Suitability for Reclamation Parameters

**BOLD** = Analytical result is in exceedance of ECMC Table 915-1 Residential Soil Screening Level Concentration



DATE: May 15, 2025

DESIGNED BY: S. Vogt

DRAWN BY: L. Bakel

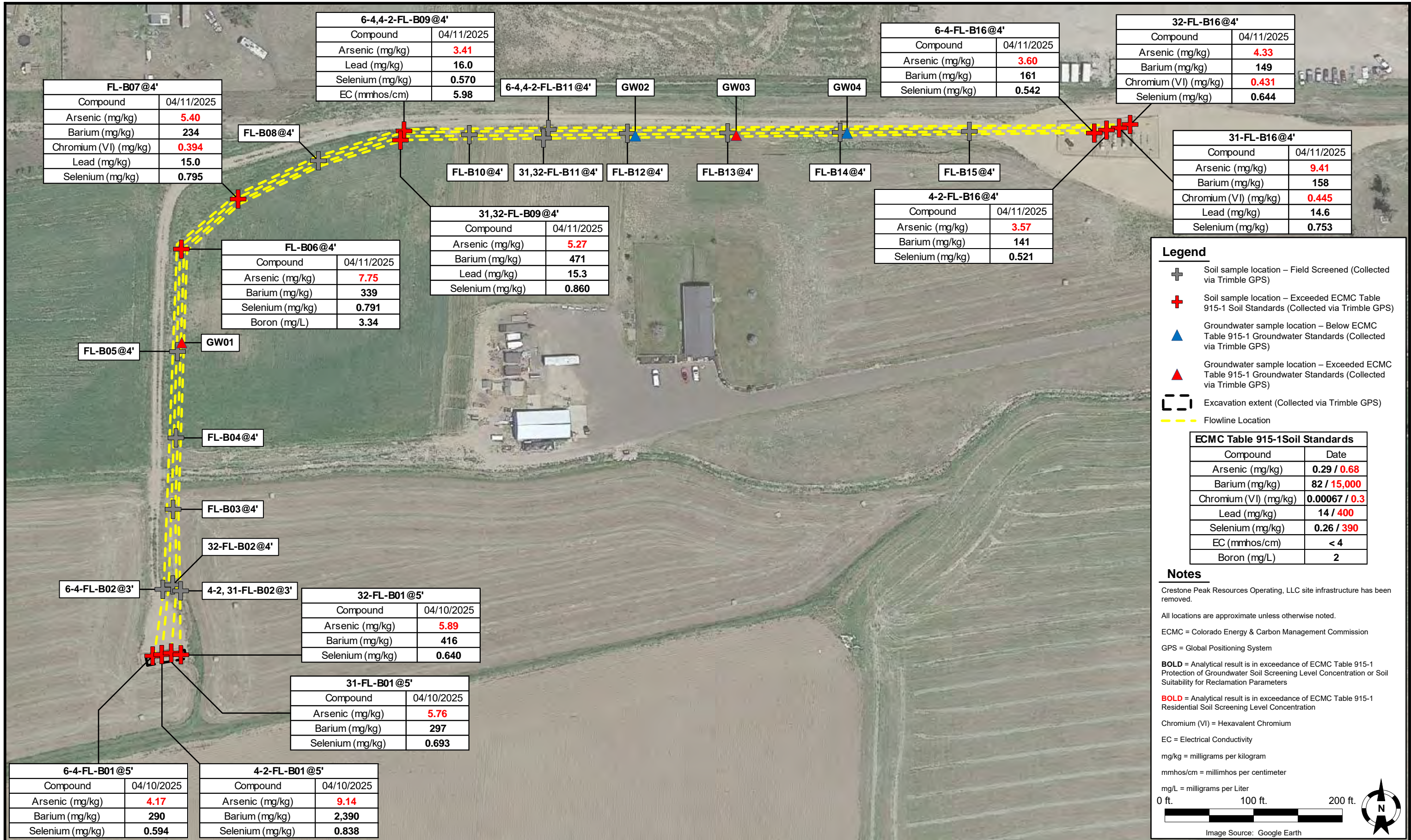


Tasman, Inc.  
4725 Independence St.  
Wheat Ridge, CO 80033

Crestone Peak Resources Operating, LLC  
Baker 31-27, 32-27, 4-2-27, 6-4-27  
SWNE Sec. 27-T1N-R68W  
Broomfield County, Colorado

Wellhead Soil Sample  
Location Map  
(04/10/2025)

Figure  
2



FL-B07@4'	
Compound	04/11/2025
Arsenic (mg/kg)	<b>5.40</b>
Barium (mg/kg)	<b>234</b>
Chromium (VI) (mg/kg)	<b>0.394</b>
Lead (mg/kg)	<b>15.0</b>
Selenium (mg/kg)	<b>0.795</b>

6-4,4-2-FL-B09@4'	
Compound	04/11/2025
Arsenic (mg/kg)	<b>3.41</b>
Lead (mg/kg)	<b>16.0</b>
Selenium (mg/kg)	<b>0.570</b>
EC (mmhos/cm)	<b>5.98</b>

6-4-FL-B16@4'	
Compound	04/11/2025
Arsenic (mg/kg)	<b>3.60</b>
Barium (mg/kg)	<b>161</b>
Selenium (mg/kg)	<b>0.542</b>

32-FL-B16@4'	
Compound	04/11/2025
Arsenic (mg/kg)	<b>4.33</b>
Barium (mg/kg)	<b>149</b>
Chromium (VI) (mg/kg)	<b>0.431</b>
Selenium (mg/kg)	<b>0.644</b>

FL-B08@4'	
Compound	04/11/2025
Arsenic (mg/kg)	<b>5.40</b>
Barium (mg/kg)	<b>234</b>
Chromium (VI) (mg/kg)	<b>0.394</b>
Lead (mg/kg)	<b>15.0</b>
Selenium (mg/kg)	<b>0.795</b>

31,32-FL-B11@4'	
Compound	04/11/2025
Arsenic (mg/kg)	<b>5.27</b>
Barium (mg/kg)	<b>471</b>
Lead (mg/kg)	<b>15.3</b>
Selenium (mg/kg)	<b>0.860</b>

4-2-FL-B16@4'	
Compound	04/11/2025
Arsenic (mg/kg)	<b>3.57</b>
Barium (mg/kg)	<b>141</b>
Selenium (mg/kg)	<b>0.521</b>

31-FL-B16@4'	
Compound	04/11/2025
Arsenic (mg/kg)	<b>9.41</b>
Barium (mg/kg)	<b>158</b>
Chromium (VI) (mg/kg)	<b>0.445</b>
Lead (mg/kg)	<b>14.6</b>
Selenium (mg/kg)	<b>0.753</b>

FL-B06@4'	
Compound	04/11/2025
Arsenic (mg/kg)	<b>7.75</b>
Barium (mg/kg)	<b>339</b>
Selenium (mg/kg)	<b>0.791</b>
Boron (mg/L)	<b>3.34</b>

31,32-FL-B09@4'	
Compound	04/11/2025
Arsenic (mg/kg)	<b>5.27</b>
Barium (mg/kg)	<b>471</b>
Lead (mg/kg)	<b>15.3</b>
Selenium (mg/kg)	<b>0.860</b>

**Legend**

- ⊕ Soil sample location – Field Screened (Collected via Trimble GPS)
- ⊕ Soil sample location – Exceeded ECMC Table 915-1 Soil Standards (Collected via Trimble GPS)
- ▲ Groundwater sample location – Below ECMC Table 915-1 Groundwater Standards (Collected via Trimble GPS)
- ▲ Groundwater sample location – Exceeded ECMC Table 915-1 Groundwater Standards (Collected via Trimble GPS)
- ⊔ Excavation extent (Collected via Trimble GPS)
- Flowline Location

ECMC Table 915-1 Soil Standards	
Compound	Date
Arsenic (mg/kg)	<b>0.29 / 0.68</b>
Barium (mg/kg)	<b>82 / 15,000</b>
Chromium (VI) (mg/kg)	<b>0.00067 / 0.3</b>
Lead (mg/kg)	<b>14 / 400</b>
Selenium (mg/kg)	<b>0.26 / 390</b>
EC (mmhos/cm)	<b>&lt; 4</b>
Boron (mg/L)	<b>2</b>

**Notes**

Crestone Peak Resources Operating, LLC site infrastructure has been removed.

All locations are approximate unless otherwise noted.

ECMC = Colorado Energy & Carbon Management Commission

GPS = Global Positioning System

**BOLD** = Analytical result is in exceedance of ECMC Table 915-1 Protection of Groundwater Soil Screening Level Concentration or Soil Suitability for Reclamation Parameters

**BOLD** = Analytical result is in exceedance of ECMC Table 915-1 Residential Soil Screening Level Concentration

Chromium (VI) = Hexavalent Chromium

EC = Electrical Conductivity

mg/kg = milligrams per kilogram

mmhos/cm = millimhos per centimeter

mg/L = milligrams per Liter

0 ft. 100 ft. 200 ft.

Image Source: Google Earth

FL-B05@4'	
Compound	04/11/2025
Arsenic (mg/kg)	<b>5.40</b>
Barium (mg/kg)	<b>234</b>
Chromium (VI) (mg/kg)	<b>0.394</b>
Lead (mg/kg)	<b>15.0</b>
Selenium (mg/kg)	<b>0.795</b>

GW01	
Compound	04/11/2025
Arsenic (mg/kg)	<b>5.40</b>
Barium (mg/kg)	<b>234</b>
Chromium (VI) (mg/kg)	<b>0.394</b>
Lead (mg/kg)	<b>15.0</b>
Selenium (mg/kg)	<b>0.795</b>

FL-B04@4'	
Compound	04/11/2025
Arsenic (mg/kg)	<b>5.40</b>
Barium (mg/kg)	<b>234</b>
Chromium (VI) (mg/kg)	<b>0.394</b>
Lead (mg/kg)	<b>15.0</b>
Selenium (mg/kg)	<b>0.795</b>

FL-B03@4'	
Compound	04/11/2025
Arsenic (mg/kg)	<b>5.40</b>
Barium (mg/kg)	<b>234</b>
Chromium (VI) (mg/kg)	<b>0.394</b>
Lead (mg/kg)	<b>15.0</b>
Selenium (mg/kg)	<b>0.795</b>

32-FL-B02@4'	
Compound	04/11/2025
Arsenic (mg/kg)	<b>5.40</b>
Barium (mg/kg)	<b>234</b>
Chromium (VI) (mg/kg)	<b>0.394</b>
Lead (mg/kg)	<b>15.0</b>
Selenium (mg/kg)	<b>0.795</b>

6-4-FL-B02@3'	
Compound	04/11/2025
Arsenic (mg/kg)	<b>5.40</b>
Barium (mg/kg)	<b>234</b>
Chromium (VI) (mg/kg)	<b>0.394</b>
Lead (mg/kg)	<b>15.0</b>
Selenium (mg/kg)	<b>0.795</b>

4-2, 31-FL-B02@3'	
Compound	04/11/2025
Arsenic (mg/kg)	<b>5.40</b>
Barium (mg/kg)	<b>234</b>
Chromium (VI) (mg/kg)	<b>0.394</b>
Lead (mg/kg)	<b>15.0</b>
Selenium (mg/kg)	<b>0.795</b>

32-FL-B01@5'	
Compound	04/10/2025
Arsenic (mg/kg)	<b>5.89</b>
Barium (mg/kg)	<b>416</b>
Selenium (mg/kg)	<b>0.640</b>

31-FL-B01@5'	
Compound	04/10/2025
Arsenic (mg/kg)	<b>5.76</b>
Barium (mg/kg)	<b>297</b>
Selenium (mg/kg)	<b>0.693</b>

6-4-FL-B01@5'	
Compound	04/10/2025
Arsenic (mg/kg)	<b>4.17</b>
Barium (mg/kg)	<b>290</b>
Selenium (mg/kg)	<b>0.594</b>

4-2-FL-B01@5'	
Compound	04/10/2025
Arsenic (mg/kg)	<b>9.14</b>
Barium (mg/kg)	<b>2,390</b>
Selenium (mg/kg)	<b>0.838</b>

DATE: May 15, 2025

DESIGNED BY: S. Vogt

DRAWN BY: L. Bakel



Tasman, Inc.  
4725 Independence St.  
Wheat Ridge, CO 80033

Crestone Peak Resources Operating, LLC  
Baker 31-27, 32-27, 4-2-27, 6-4-27  
SWNE Sec. 27-T1N-R68W  
Broomfield County, Colorado

Flowline Soil Sample  
Location Map  
(04/10/2025 & 04/11/2025)




Figure  
3A

SP-CS03	
Compound	04/11/2025
Arsenic (mg/kg)	4.29
Barium (mg/kg)	217
Chromium (VI) (mg/kg)	0.494
Selenium (mg/kg)	0.830
EC (mmhos/cm)	4.29

SP-CS04	
Compound	04/11/2025
Arsenic (mg/kg)	4.64
Barium (mg/kg)	290
Selenium (mg/kg)	0.681
EC (mmhos/cm)	4.78
Boron (mg/L)	2.09

SP-CS02	
Compound	04/11/2025
Arsenic (mg/kg)	5.05
Barium (mg/kg)	180
Selenium (mg/kg)	0.429

**Legend**

-  Stockpile location – Exceeded ECMC Table 915-1 Soil Standards (Collected via Trimble GPS)
-  Excavation extent (Collected via Trimble GPS)
-  Flowline Location

ECMC Table 915-1 Soil Standards	
Compound	Date
Arsenic (mg/kg)	0.29 / <b>0.68</b>
Barium (mg/kg)	82 / <b>15,000</b>
Chromium (VI) (mg/kg)	0.00067 / <b>0.3</b>
Selenium (mg/kg)	0.26 / <b>390</b>
EC (mmhos/cm)	< 4
Boron (mg/L)	2

**Notes**

Crestone Peak Resources Operating, LLC site infrastructure has been removed.

All locations are approximate unless otherwise noted.

ECMC = Colorado Energy & Carbon Management Commission

GPS = Global Positioning System

**BOLD** = Analytical result is in exceedance of ECMC Table 915-1 Protection of Groundwater Soil Screening Level Concentration or Soil Suitability for Reclamation Parameters

**BOLD** = Analytical result is in exceedance of ECMC Table 915-1 Residential Soil Screening Level Concentration

Chromium (VI) = Hexavalent Chromium

EC = Electrical Conductivity

mg/kg = milligrams per kilogram

mmhos/cm = millimhos per centimeter

mg/L = milligrams per Liter

0 ft. 100 ft. 200 ft.



Image Source: Google Earth



DATE:	May 15, 2025
DESIGNED BY:	S. Vogt
DRAWN BY:	L. Bakel

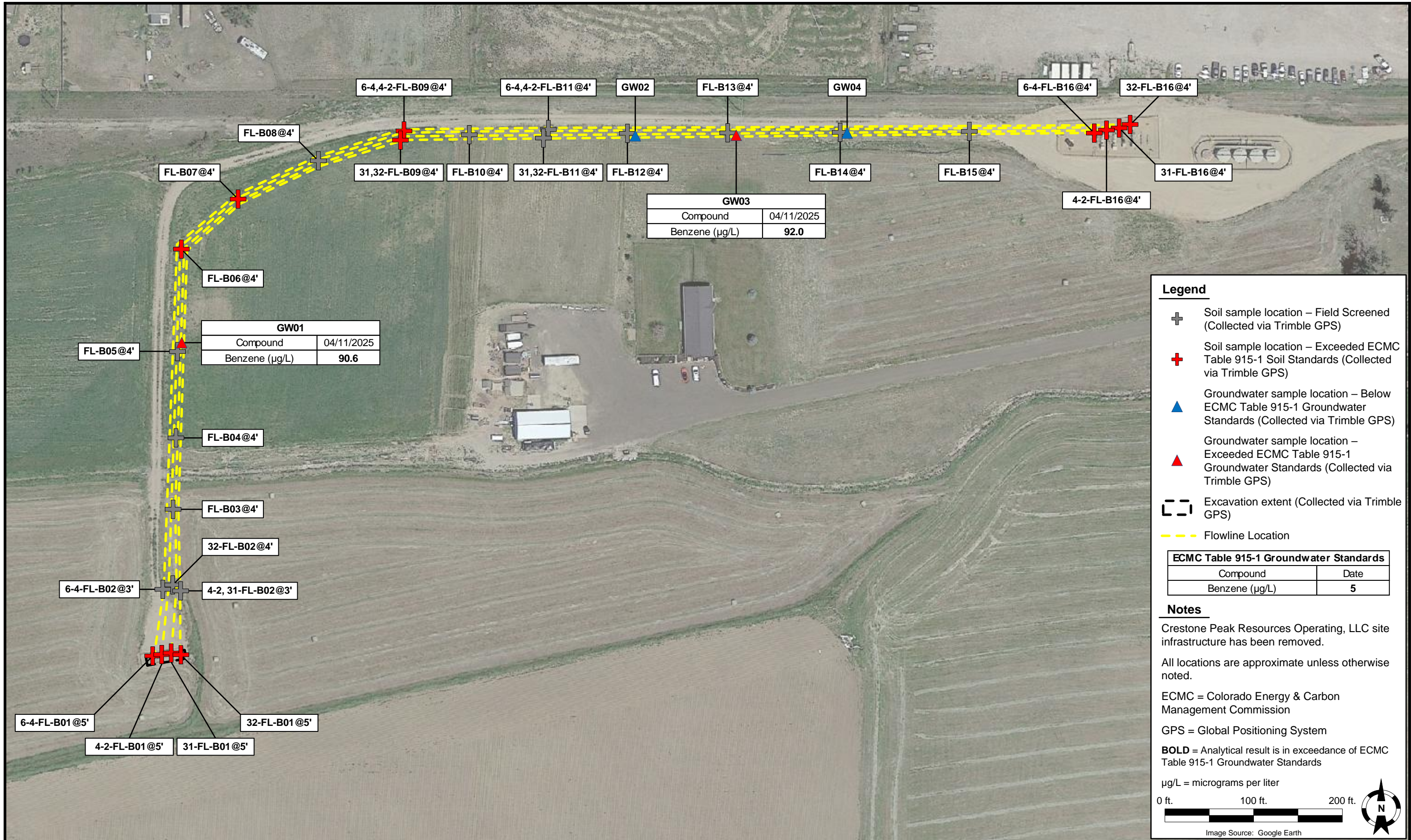


Tasman, Inc.  
4725 Independence St.  
Wheat Ridge, CO 80033

Crestone Peak Resources Operating, LLC  
Baker 31-27, 32-27, 4-2-27, 6-4-27  
SWNE Sec. 27-T1N-R68W  
Broomfield County, Colorado

Flowline Stockpile Sample  
Location Map  
(04/11/2025)

Figure  
3B



DATE: May 15, 2025

DESIGNED BY: S. Vogt

DRAWN BY: L. Bakel



**Tasman, Inc.**  
 4725 Independence St.  
 Wheat Ridge, CO 80033

**Crestone Peak Resources Operating, LLC**  
 Baker 31-27, 32-27, 4-2-27, 6-4-27  
 SWNE Sec. 27-T1N-R68W  
 Broomfield County, Colorado

Groundwater Sample  
 Location Map  
 (04/11/2025)

Figure  
 4

# TABLES

**TABLE 1**  
**BAKER 31-27, 32-27, 4-2-27, 6-4-27**  
**SAMPLE LOCATIONS**  
**CRESTONE PEAK RESOURCES OPERATING, LLC**



Sample Location	Depth	Date	PID Reading (ppm)	Latitude	Longitude	GPS PDOP Value	Lab (Y/N)
6-4-WH-B01@6'	6'	04/10/2025	4.2	40.024023	-104.987820	1	Y
4-2-WH-B01@6'	6'	04/10/2025	4.1	40.024030	-104.987785	0.9	Y
31-WH-B01@6'	6'	04/10/2025	3.5	40.024034	-104.987751	0.9	Y
32-WH-B01@6'	6'	04/10/2025	4.4	40.024037	-104.987726	0.9	Y
6-4-WH-N01@5'	5'	04/10/2025	4.6	40.024032	-104.987820	0.9	N
6-4-WH-S01@5'	5'	04/10/2025	6.1	40.024014	-104.987824	0.9	N
6-4-WH-W01@5'	5'	04/10/2025	1.6	40.024021	-104.987837	1.1	N
4-2-WH-N01@5'	5'	04/10/2025	4.8	40.024037	-104.987782	0.9	N
4-2-WH-S01@5'	5'	04/10/2025	4.0	40.024018	-104.987781	0.9	N
31-WH-N01@5'	5'	04/10/2025	0.7	40.024043	-104.987756	0.9	N
31-WH-S01@5'	5'	04/10/2025	4.4	40.024021	-104.987751	0.9	N
32-WH-N01@5'	5'	04/10/2025	4.7	40.024049	-104.987724	0.9	N
32-WH-S01@5'	5'	04/10/2025	4.5	40.024026	-104.987720	0.9	N
32-WH-E01@5'	5'	04/10/2025	5.6	40.024038	-104.987709	0.9	N
6-4-FL-B01@5'	5'	04/10/2025	3.2	40.024034	-104.987806	0.9	Y
4-2-FL-B01@5'	5'	04/10/2025	2.7	40.024040	-104.987768	0.9	Y
31-FL-B01@5'	5'	04/10/2025	4.4	40.024046	-104.987737	0.9	Y
32-FL-B01@5'	5'	04/10/2025	3.4	40.024042	-104.987703	0.9	Y
SP-CS01	-	04/10/2025	4.3	40.024068	-104.987848	1	Y
6-4-FL-B02@3'	3'	04/11/2025	1.4	40.024034	-104.987806	0.9	N
4-2, 31-FL-B02@3'	3'	04/11/2025	2.8	40.024254	-104.987729	0.8	N
32-FL-B02@4'	4'	04/11/2025	3.4	40.024252	-104.987703	0.8	N
FL-B03@4'	4'	04/11/2025	0.9	40.024487	-104.987717	0.8	N
FL-B04@4'	4'	04/11/2025	2.4	40.024712	-104.987714	0.7	N
FL-B05@4'	4'	04/11/2025	1.1	40.024976	-104.987724	0.8	N
FL-B06@4'	4'	04/11/2025	1.9	40.025287	-104.987698	0.8	Y
FL-B07@4'	4'	04/11/2025	1.3	40.025461	-104.987477	0.8	Y
FL-B08@4'	4'	04/11/2025	6.5	40.025579	-104.987153	0.8	N
6-4,4-2-FL-B09@4'	4'	04/11/2025	1.9	40.025659	-104.986806	0.8	Y
31,32-FL-B09@4'	4'	04/11/2025	6.6	40.025628	-104.986798	0.8	Y
FL-B10@4'	4'	04/11/2025	2.1	40.025652	-104.986538	0.8	N
6-4,4-2-FL-B11@4'	4'	04/11/2025	2.2	40.025665	-104.986219	0.7	N
31,32-FL-B11@4'	4'	04/11/2025	1.3	40.025643	-104.986217	0.8	N
FL-B12@4'	4'	04/11/2025	4.6	40.025647	-104.985896	0.9	N
FL-B13@4'	4'	04/11/2025	3.8	40.025646	-104.985493	0.8	N

**TABLE 1**  
**BAKER 31-27, 32-27, 4-2-27, 6-4-27**  
**SAMPLE LOCATIONS**  
**CRESTONE PEAK RESOURCES OPERATING, LLC**



Sample Location	Depth	Date	PID Reading (ppm)	Latitude	Longitude	GPS PDOP Value	Lab (Y/N)
FL-B14@4'	4'	04/11/2025	3.2	40.025638	-104.985036	0.8	N
FL-B15@4'	4'	04/11/2025	2.7	40.025641	-104.984522	0.8	N
6-4-FL-B16@4'	4'	04/11/2025	2.0	40.025683	-104.983879	0.7	Y
4-2-FL-B16@4'	4'	04/11/2025	1.2	40.025677	-104.983917	0.8	Y
31-FL-B16@4'	4'	04/11/2025	3.3	40.025681	-104.983968	0.8	Y
32-FL-B16@4'	4'	04/11/2025	1.9	40.024042	-104.987703	0.9	Y
SP-CS02	-	04/11/2025	1.5	40.024714	-104.987784	0.7	Y
SP-CS03	-	04/11/2025	0.7	40.025530	-104.987523	0.8	Y
SP-CS04	-	04/11/2025	0.7	40.025646	-104.984969	0.9	Y
GW01	4'	04/11/2025	-	40.024977	-104.987711	0.7	Y
GW02	4'	04/11/2025	-	40.025663	-104.985900	0.9	Y
GW03	4'	04/11/2025	-	40.025660	-104.985498	0.8	Y
GW04	4'	04/11/2025	-	40.025655	-104.985043	0.8	Y

**Notes:**

PID = Photoionization Detector

ppm = parts per million

GPS = Global Positioning System

PDOP = Position Dilution of Precision

- = Not applicable

**TABLE 2**  
**BAKER 31-27, 32-27, 4-2-27, 6-4-27**  
**SOIL ANALYTICAL DATA - VOCs**  
**CRESTONE PEAK RESOURCES OPERATING, LLC**



Soil Sample Location	Depth	Date	Benzene (mg/kg)	Toluene (mg/kg)	Ethylbenzene (mg/kg)	Total Xylenes (mg/kg)	Naphthalene (mg/kg)	TVPH-GRO (mg/kg)	TEPH-DRO (mg/kg)	TEPH-ORO (mg/kg)	1,2,4-TMB (mg/kg)	1,3,5-TMB (mg/kg)
ECMC Organic Compounds in Soils - GSSL <sup>(1)</sup>			0.0026	0.69	0.78	9.9	0.0038	500			0.0081	0.0087
ECMC Organic Compounds in Soils - RSL <sup>(2)</sup>			1.2	490	5.8	58	2	500			30	27
6-4-WH-B01@6'	6'	04/10/2025	<0.000467	<0.00130	<0.000737	<0.000880	<0.00579	0.0251	14.7	19.3	<0.00158	<0.00200
4-2-WH-B01@6'	6'	04/10/2025	<0.000467	<0.00130	<0.000737	<0.000880	<0.00579	0.0292	10.5	16.8	<0.00158	<0.00200
31-WH-B01@6'	6'	04/10/2025	<0.000467	<0.00130	<0.000737	<0.000880	<0.00579	<0.0217	4.03	6.07	<0.00158	<0.00200
32-WH-B01@6'	6'	04/10/2025	<0.000467	<0.00130	<0.000737	<0.000880	<0.00579	0.0409	21.4	26.8	<0.00158	<0.00200
6-4-FL-B01@5'	5'	04/10/2025	<0.000467	<0.00130	<0.000737	<0.000880	<0.00579	0.0361	2.34	4.89	<0.00158	<0.00200
4-2-FL-B01@5'	5'	04/10/2025	<0.000467	<0.00130	<0.000737	<0.000880	<0.00579	<0.0217	1.93	3.53	<0.00158	<0.00200
31-FL-B01@5'	5'	04/10/2025	<0.000467	<0.00130	<0.000737	<0.000880	<0.00579	<0.0217	5.37	8.85	<0.00158	<0.00200
32-FL-B01@5'	5'	04/10/2025	<0.000467	<0.00130	<0.000737	<0.000880	<0.00579	0.0254	<1.61	1.58	<0.00158	<0.00200
SP-CS01	-	04/10/2025	<0.000467	<0.00130	<0.000737	<0.000880	<0.00579	0.0243	36.0	59.2	<0.00158	<0.00200
FL-B06@4'	4'	04/11/2025	<0.000467	0.00188	<0.000737	<0.000880	<0.00579	<0.0217	1.68	12.8	<0.00158	<0.00200
FL-B07@4'	4'	04/11/2025	<0.000467	0.00225	<0.000737	<0.000880	<0.00579	0.0584	5.43	16.5	<0.00158	<0.00200
6-4,4-2-FL-B09@4'	4'	04/11/2025	<0.000467	0.00205	<0.000737	<0.000880	<0.00579	0.0283	<1.61	1.39	<0.00158	<0.00200
31,32-FL-B09@4'	4'	04/11/2025	<0.000467	0.00208	<0.000737	<0.000880	<0.00579	0.0329	2.92	4.81	<0.00158	<0.00200
6-4-FL-B16@4'	4'	04/11/2025	<0.000467	0.00200	<0.000737	<0.000880	<0.00579	0.0341	<1.61	1.66	<0.00158	<0.00200
4-2-FL-B16@4'	4'	04/11/2025	<0.000467	0.00178	<0.000737	<0.000880	<0.00579	0.0318	<1.61	1.93	<0.00158	<0.00200
31-FL-B16@4'	4'	04/11/2025	<0.000467	0.00195	<0.000737	<0.000880	<0.00579	0.0255	<1.61	1.74	<0.00158	<0.00200
32-FL-B16@4'	4'	04/11/2025	<0.000467	0.00168	<0.000737	<0.000880	<0.00579	<0.0217	<1.61	0.742	<0.00158	<0.00200
SP-CS02	-	04/11/2025	<0.000467	0.00225	<0.000737	<0.000880	<0.00579	<0.0217	<1.61	2.55	<0.00158	<0.00200
SP-CS03	-	04/11/2025	<0.000467	0.00197	<0.000737	<0.000880	<0.00579	0.0223	<1.61	2.41	<0.00158	<0.00200
SP-CS04	-	04/11/2025	<0.000467	0.00243	<0.000737	<0.000880	<0.00579	0.0245	<1.61	4.96	<0.00158	<0.00200

**Notes:**

VOCs = Volatile Organic Compounds

(1) Standards for soil are taken from ECMC Table 915-1: Organic Compounds in Soils - Protection of Groundwater Soil Screening Level Concentrations (Effective January 15, 2021)

(2) Standards for soil are taken from ECMC Table 915-1: Organic Compounds in Soils - Residential Soil Screening Level Concentrations (Effective January 15, 2021)

ECMC = Colorado Energy & Carbon Management Commission

GSSL = Protection of Groundwater Screening Level

**TABLE 2**  
**BAKER 31-27, 32-27, 4-2-27, 6-4-27**  
**SOIL ANALYTICAL DATA - VOCs**  
**CRESTONE PEAK RESOURCES OPERATING, LLC**



Soil Sample Location	Depth	Date	Benzene (mg/kg)	Toluene (mg/kg)	Ethylbenzene (mg/kg)	Total Xylenes (mg/kg)	Naphthalene (mg/kg)	TVPH-GRO (mg/kg)	TEPH-DRO (mg/kg)	TEPH-ORO (mg/kg)	1,2,4-TMB (mg/kg)	1,3,5-TMB (mg/kg)
<b>ECMC Organic Compounds in Soils - GSSL <sup>(1)</sup></b>			<b>0.0026</b>	<b>0.69</b>	<b>0.78</b>	<b>9.9</b>	<b>0.0038</b>	<b>500</b>			<b>0.0081</b>	<b>0.0087</b>
<b>ECMC Organic Compounds in Soils - RSL <sup>(2)</sup></b>			<b>1.2</b>	<b>490</b>	<b>5.8</b>	<b>58</b>	<b>2</b>	<b>500</b>			<b>30</b>	<b>27</b>

RSSL = Residential Soil Screening Level

(<) = Analytical result is less than the indicated laboratory reporting limit

mg/kg = milligrams per kilogram

TVPH - GRO = Total Volatile Petroleum Hydrocarbons - Gasoline Range Organics

TEPH - DRO = Total Extractable Petroleum Hydrocarbons - Diesel Range Organics

TEPH - ORO = Total Extractable Petroleum Hydrocarbons - Oil Range Organics

1,2,4 - TMB = 1,2,4 - Trimethylbenzene

1,3,5 - TMB = 1,3,5 - Trimethylbenzene

**BOLD** = Analytical result is in exceedance of ECMC Table 915-1: Organic Compounds in Soils - Protection of Groundwater Soil Screening Level Concentrations

**BOLD** = Analytical result is in exceedance of ECMC Table 915-1: Organic Compounds in Soils - Residential Soil Screening Level Concentrations

- = Not applicable or constituent not analyzed

*Italics* = Laboratory minimum detection limit exceeds the ECMC Table 915-1 standard



**TABLE 3**  
**BAKER 31-27, 32-27, 4-2-27, 6-4-27**  
**SOIL ANALYTICAL DATA - PAHs**  
**CRESTONE PEAK RESOURCES OPERATING, LLC**

Soil Sample Location	Depth	Date	Acenaphthene (mg/kg)	Anthracene (mg/kg)	Benzo(a)A (mg/kg)	Benzo(b)F (mg/kg)	Benzo(k)F (mg/kg)	Benzo(a)P (mg/kg)	Chrysene (mg/kg)	D (a,h) A (mg/kg)	Fluoranthene (mg/kg)	Fluorene (mg/kg)	1,2,3-CD (mg/kg)	1-M (mg/kg)	2-M (mg/kg)	Pyrene (mg/kg)
ECMC Organic Compounds in Soils - GSSL <sup>(1)</sup>			0.55	5.8	0.011	0.3	2.9	0.24	9	0.96	8.9	0.54	0.98	0.006	0.019	1.3
ECMC Organic Compounds in Soils - RSL <sup>(2)</sup>			360	1,800	1.1	1.1	11	0.11	110	0.11	240	240	1.1	18	24	180
6-4-WH-B01@6'	6'	04/10/2025	<0.00162	<0.00163	<0.00200	<0.00275	<0.00213	<0.00163	<0.00206	<0.00201	<0.00239	<0.00180	<0.00234	<0.00219	<0.00571	<0.00205
4-2-WH-B01@6'	6'	04/10/2025	<0.00162	<0.00163	<0.00200	<0.00275	<0.00213	<0.00163	<0.00206	<0.00201	<0.00239	<0.00180	<0.00234	<0.00219	<0.00571	<0.00205
31-WH-B01@6'	6'	04/10/2025	<0.00162	<0.00163	<0.00200	<0.00275	<0.00213	<0.00163	<0.00206	<0.00201	<0.00239	<0.00180	<0.00234	<0.00219	<0.00571	<0.00205
32-WH-B01@6'	6'	04/10/2025	<0.00162	<0.00163	<0.00200	<0.00275	<0.00213	<0.00163	<0.00206	<0.00201	<0.00239	<0.00180	<0.00234	<0.00219	<0.00571	<0.00205
6-4-FL-B01@5'	5'	04/10/2025	<0.00162	<0.00163	<0.00200	<0.00275	<0.00213	<0.00163	<0.00206	<0.00201	<0.00239	<0.00180	<0.00234	<0.00219	<0.00571	<0.00205
4-2-FL-B01@5'	5'	04/10/2025	<0.00162	<0.00163	<0.00200	<0.00275	<0.00213	<0.00163	<0.00206	<0.00201	<0.00239	<0.00180	<0.00234	<0.00219	<0.00571	<0.00205
31-FL-B01@5'	5'	04/10/2025	<0.00162	<0.00163	<0.00200	<0.00275	<0.00213	<0.00163	<0.00206	<0.00201	<0.00239	<0.00180	<0.00234	<0.00219	<0.00571	<0.00205
32-FL-B01@5'	5'	04/10/2025	<0.00162	<0.00163	<0.00200	<0.00275	<0.00213	<0.00163	<0.00206	<0.00201	<0.00239	<0.00180	<0.00234	<0.00219	<0.00571	<0.00205
SP-CS01	-	04/10/2025	<0.00162	<0.00163	<0.00200	<0.00275	<0.00213	<0.00163	<0.00206	<0.00201	<0.00239	<0.00180	<0.00234	<0.00219	<0.00571	<0.00205
FL-B06@4'	4'	04/11/2025	<0.00162	<0.00163	<0.00200	<0.00275	<0.00213	<0.00163	<0.00206	<0.00201	<0.00239	<0.00180	<0.00234	<0.00219	<0.00571	<0.00205
FL-B07@4'	4'	04/11/2025	<0.00162	<0.00163	<0.00200	<0.00275	<0.00213	<0.00163	<0.00206	<0.00201	<0.00239	<0.00180	<0.00234	<0.00219	<0.00571	<0.00205
6-4,4-2-FL-B09@4'	4'	04/11/2025	<0.00162	<0.00163	<0.00200	<0.00275	<0.00213	<0.00163	<0.00206	<0.00201	<0.00239	<0.00180	<0.00234	<0.00219	<0.00571	<0.00205
31,32-FL-B09@4'	4'	04/11/2025	<0.00162	<0.00163	<0.00200	<0.00275	<0.00213	<0.00163	<0.00206	<0.00201	<0.00239	<0.00180	<0.00234	<0.00219	<0.00571	<0.00205
6-4-FL-B16@4'	4'	04/11/2025	<0.00162	<0.00163	<0.00200	<0.00275	<0.00213	<0.00163	<0.00206	<0.00201	0.00336	<0.00180	<0.00234	<0.00219	<0.00571	0.00262
4-2-FL-B16@4'	4'	04/11/2025	<0.00162	<0.00163	<0.00200	<0.00275	<0.00213	<0.00163	<0.00206	<0.00201	<0.00239	<0.00180	<0.00234	<0.00219	<0.00571	<0.00205
31-FL-B16@4'	4'	04/11/2025	<0.00162	<0.00163	<0.00200	<0.00275	<0.00213	<0.00163	<0.00206	<0.00201	<0.00239	<0.00180	<0.00234	<0.00219	<0.00571	<0.00205
32-FL-B16@4'	4'	04/11/2025	<0.00162	<0.00163	<0.00200	<0.00275	<0.00213	<0.00163	<0.00206	<0.00201	<0.00239	<0.00180	<0.00234	<0.00219	<0.00571	<0.00205
SP-CS02	-	04/11/2025	<0.00162	<0.00163	<0.00200	<0.00275	<0.00213	<0.00163	<0.00206	<0.00201	<0.00239	<0.00180	<0.00234	<0.00219	<0.00571	<0.00205
SP-CS03	-	04/11/2025	<0.00162	<0.00163	<0.00200	<0.00275	<0.00213	<0.00163	<0.00206	<0.00201	<0.00239	<0.00180	<0.00234	<0.00219	<0.00571	<0.00205
SP-CS04	-	04/11/2025	<0.00162	<0.00163	<0.00200	<0.00275	<0.00213	<0.00163	<0.00206	<0.00201	<0.00239	<0.00180	<0.00234	<0.00219	<0.00571	<0.00205

**Notes:**

PAHs = Polycyclic Aromatic Hydrocarbons

(1) Standards for soil are taken from ECMC Table 915-1: Organic Compounds in Soils - Protection of Groundwater Soil Screening Level Concentrations (Effective January 15, 2021)

(2) Standards for soil are taken from ECMC Table 915-1: Organic Compounds in Soils - Residential Soil Screening Level Concentrations (Effective January 15, 2021)

ECMC = Colorado Energy & Carbon Management Commission

GSSL = Protection of Groundwater Screening Level

RSSL = Residential Soil Screening Level



**TABLE 3**  
**BAKER 31-27, 32-27, 4-2-27, 6-4-27**  
**SOIL ANALYTICAL DATA - PAHs**  
**CRESTONE PEAK RESOURCES OPERATING, LLC**

Soil Sample Location	Depth	Date	Acenaphthene (mg/kg)	Anthracene (mg/kg)	Benzo(a)A (mg/kg)	Benzo(b)F (mg/kg)	Benzo(k)F (mg/kg)	Benzo(a)P (mg/kg)	Chrysene (mg/kg)	D (a,h) A (mg/kg)	Fluoranthene (mg/kg)	Fluorene (mg/kg)	1,2,3-CD (mg/kg)	1-M (mg/kg)	2-M (mg/kg)	Pyrene (mg/kg)
ECMC Organic Compounds in Soils - GSSL <sup>(1)</sup>			0.55	5.8	0.011	0.3	2.9	0.24	9	0.96	8.9	0.54	0.98	0.006	0.019	1.3
ECMC Organic Compounds in Soils - RSL <sup>(2)</sup>			360	1,800	1.1	1.1	11	0.11	110	0.11	240	240	1.1	18	24	180

(<) = Analytical result is less than the indicated laboratory reporting limit

mg/kg = milligrams per kilogram

Benzo(a)A = Benzo(a)Anthracene

Benzo(b)F = Benzo(b)Fluoranthene

Benzo(k)F = Benzo(k)Fluoranthene

Benzo(a)P = Benzo(a)Pyrene

D (a,h) A = Dibenz(a,h)Anthracene

1,2,3-CD = Indeno(1,2,3-cd)Pyrene

1-M = 1-Methylnaphthalene

2-M = 2-Methylnaphthalene

**BOLD** = Analytical result is in exceedance of ECMC Table 915-1: Organic Compounds in Soils - Protection of Groundwater Soil Screening Level Concentrations

**BOLD** = Analytical result is in exceedance of ECMC Table 915-1: Organic Compounds in Soils - Residential Soil Screening Level Concentrations

- = Not applicable or constituent not analyzed



**TABLE 4**  
**BAKER 31-27, 32-27, 4-2-27, 6-4-27**  
**SOIL ANALYTICAL DATA - METALS**  
**CRESTONE PEAK RESOURCES OPERATING, LLC**

Soil Sample Location	Depth	Date	Arsenic (mg/kg)	Barium (mg/kg)	Cadmium (mg/kg)	Chromium (VI) (mg/kg)	Copper (mg/kg)	Lead (mg/kg)	Nickel (mg/kg)	Selenium (mg/kg)	Silver (mg/kg)	Zinc (mg/kg)
ECMC Metals in Soils - GSSL <sup>(1)</sup>			0.29	82	0.38	0.00067	46	14	26	0.26	0.8	370
ECMC Metals in Soils - RSL <sup>(2)</sup>			0.68	15,000	71	0.3	3,100	400	1,500	390	390	23,000
6-4-WH-B01@6'	6'	04/10/2025	7.25	492	0.162	<0.379	16.2	11.0	14.1	0.546	<0.0865	52.3
4-2-WH-B01@6'	6'	04/10/2025	8.79	274	0.315	<0.379	24.8	24.5	43.6	0.690	<0.0865	128
31-WH-B01@6'	6'	04/10/2025	4.39	259	0.198	<0.379	12.2	12.9	17.2	0.501	<0.0865	46.6
32-WH-B01@6'	6'	04/10/2025	5.93	194	0.230	<0.379	14.7	11.4	14.7	0.611	<0.0865	51.9
6-4-FL-B01@5'	5'	04/10/2025	4.17	290	0.315	<0.379	13.1	8.61	13.4	0.594	<0.0865	45.4
4-2-FL-B01@5'	5'	04/10/2025	9.14	2,390	0.165	<0.379	20.8	12.3	23.4	0.838	<0.0865	90.7
31-FL-B01@5'	5'	04/10/2025	5.76	297	0.338	<0.379	15.3	11.4	17.2	0.693	<0.0865	53.5
32-FL-B01@5'	5'	04/10/2025	5.89	416	0.281	<0.379	12.0	10.8	14.2	0.640	<0.0865	40.8
SP-CS01	-	04/10/2025	4.12	304	0.236	<0.379	11.3	8.84	11.8	0.555	<0.0865	38.5
FL-B06@4'	4'	04/11/2025	7.75	339	0.303	<0.379	15.4	13.4	19.00	0.791	<0.0865	62.5
FL-B07@4'	4'	04/11/2025	5.40	234	0.290	0.394	16.8	15.0	18.1	0.795	<0.0865	67.0
6-4-4-2-FL-B09@4'	4'	04/11/2025	3.41	58.5	0.135	<0.379	15.2	16.0	11.5	0.570	<0.0865	55.8
31,32-FL-B09@4'	4'	04/11/2025	5.27	471	0.278	<0.379	16.6	15.3	18.5	0.860	<0.0865	63.7
6-4-FL-B16@4'	4'	04/11/2025	3.60	161	0.151	<0.379	10.6	8.54	11.5	0.542	<0.0865	38.0
4-2-FL-B16@4'	4'	04/11/2025	3.57	141	0.163	<0.379	9.90	8.93	10.3	0.521	<0.0865	37.2
31-FL-B16@4'	4'	04/11/2025	9.41	158	0.274	0.445	16.2	14.6	16.4	0.753	<0.0865	51.3
32-FL-B16@4'	4'	04/11/2025	4.33	149	0.164	0.431	11.3	10.3	12.4	0.644	<0.0865	44.5
SP-CS02	-	04/11/2025	5.05	180	0.209	<0.379	12.6	11.2	14.9	0.429	<0.0865	51.3
SP-CS03	-	04/11/2025	4.29	217	0.329	0.494	13.4	12.1	19.5	0.830	<0.0865	58.6
SP-CS04	-	04/11/2025	4.64	290	0.208	<0.379	13.1	10.6	14.4	0.681	<0.0865	46.8

**Notes:**

(1) Standards for soil are taken from ECMC Table 915-1: Metals in Soils - Protection of Groundwater Soil Screening Level Concentrations (Effective January 15, 2021)

(2) Standards for soil are taken from ECMC Table 915-1: Metals in Soils - Residential Soil Screening Level Concentrations (Effective January 15, 2021)

ECMC = Colorado Energy & Carbon Management Commission

GSSL = Protection of Groundwater Screening Level

**TABLE 4**  
**BAKER 31-27, 32-27, 4-2-27, 6-4-27**  
**SOIL ANALYTICAL DATA - METALS**  
**CRESTONE PEAK RESOURCES OPERATING, LLC**



Soil Sample Location	Depth	Date	Arsenic (mg/kg)	Barium (mg/kg)	Cadmium (mg/kg)	Chromium (VI) (mg/kg)	Copper (mg/kg)	Lead (mg/kg)	Nickel (mg/kg)	Selenium (mg/kg)	Silver (mg/kg)	Zinc (mg/kg)
ECMC Metals in Soils - GSSL <sup>(1)</sup>			0.29	82	0.38	0.00067	46	14	26	0.26	0.8	370
ECMC Metals in Soils - RSL <sup>(2)</sup>			0.68	15,000	71	0.3	3,100	400	1,500	390	390	23,000

RSSL = Residential Soil Screening Level

(<) = Analytical result is less than the indicated laboratory minimum detection limit

mg/kg = milligrams per kilogram

**BOLD** = Analytical result is in exceedance of ECMC Table 915-1: Metals in Soils - Protection of Groundwater Soil Screening Level Concentrations

**BOLD** = Analytical result is in exceedance of ECMC Table 915-1: Metals in Soils - Residential Soil Screening Level Concentrations

*Italics* = Laboratory minimum detection limit exceeds the ECMC Table 915-1 Standard

- = Not applicable or constituent not analyzed

**TABLE 5**  
**BAKER 31-27, 32-27, 4-2-27, 6-4-27**  
**SOIL ANALYTICAL DATA - SOIL RECLAMATION**  
**CRESTONE PEAK RESOURCES OPERATING, LLC**



Soil Sample Location	Depth	Date	pH	SAR	EC (mmhos/cm)	Boron (mg/L)
<b>ECMC Soil Suitability for Reclamation<sup>(1)</sup></b>			<b>6 - 8.3</b>	<b>&lt; 6</b>	<b>&lt; 4</b>	<b>2</b>
6-4-WH-B01@6'	6'	04/10/2025	8.21	0.976	0.674	0.549
4-2-WH-B01@6'	6'	04/10/2025	<b>8.44</b>	3.56	0.854	0.998
31-WH-B01@6'	6'	04/10/2025	8.27	0.787	0.329	0.297
32-WH-B01@6'	6'	04/10/2025	<b>8.85</b>	1.01	0.658	0.395
6-4-FL-B01@5'	5'	04/10/2025	8.05	0.339	0.339	0.345
4-2-FL-B01@5'	5'	04/10/2025	8.22	0.484	0.312	0.285
31-FL-B01@5'	5'	04/10/2025	8.11	0.734	0.379	0.310
32-FL-B01@5'	5'	04/10/2025	8.10	0.342	0.282	0.278
SP-CS01	-	04/10/2025	8.12	0.702	0.346	0.377
FL-B06@4'	4'	04/11/2025	7.88	0.945	3.74	<b>3.34</b>
FL-B07@4'	4'	04/11/2025	7.70	1.33	3.17	1.53
6-4,4-2-FL-B09@4'	4'	04/11/2025	7.81	3.63	<b>5.98</b>	1.48
31,32-FL-B09@4'	4'	04/11/2025	7.73	0.936	3.24	1.24
6-4-FL-B16@4'	4'	04/11/2025	7.83	0.439	2.47	0.718
4-2-FL-B16@4'	4'	04/11/2025	7.91	0.481	2.25	0.691
31-FL-B16@4'	4'	04/11/2025	7.85	0.238	1.07	0.413
32-FL-B16@4'	4'	04/11/2025	7.87	0.547	2.65	0.988
SP-CS02	-	04/11/2025	7.78	0.222	2.52	1.31
SP-CS03	-	04/11/2025	7.82	1.94	<b>4.29</b>	1.43
SP-CS04	-	04/11/2025	7.86	2.71	<b>4.78</b>	<b>2.09</b>

**Notes:**

(1) Standards for soil are taken from ECMC Table 915-1: Soil Suitability for Reclamation (Effective January 15, 2021)

ECMC = Colorado Energy & Carbon Management Commission

(<) = Analytical result is less than the indicated laboratory reporting limit

mmhos/cm = millimhos per centimeter

mg/L = milligrams per liter

pH = Potential of Hydrogen

SAR = Sodium Adsorption Ratio

EC = Electrical Conductivity

**BOLD** = Analytical result is in exceedance of ECMC Table 915-1: Soil Suitability for Reclamation Concentrations

- = Not applicable or constituent not analyzed

**TABLE 6**  
**BAKER 31-27, 32-27, 4-2-27, 6-4-27**  
**GROUNDWATER ANALYTICAL DATA**  
**CRESTONE PEAK RESOURCES OPERATING, LLC**



Groundwater Sample ID	Date	Benzene (µg/L)	Toluene (µg/L)	Ehtylbenzene (µg/L)	Total Xylenes (µg/L)	Naphthalene (µg/L)	1,2,4-TMB (µg/L)	1,3,5-TMB (µg/L)	Chloride (mg/L)	Sulfate (mg/L)	TDS (mg/L)
ECMC Organic Compounds in Groundwater and Groundwater Inorganic Parameters <sup>(1)</sup>		5	560	700	1,400	140	67	67	250 or <1.25 x Background	250 or <1.25 x Background	<1.25 x Background
GW01	04/11/2025	<b>90.6</b>	339	25.3	263	3.33	31.6	13.6	94.6	4,920	7,320
GW02	04/11/2025	1.98	25.1	2.14	29.9	<1.00	3.05	1.34	114	6,400	10,100
GW03	04/11/2025	<b>92.0</b>	252	17.2	211	2.20	21.7	9.36	69.4	4,110	6,260
GW04	04/11/2025	1.25	2.09	<0.137	1.16	<1.00	<0.322	<0.104	24.6	1,850	3,090

**Notes:**

(1) Standards for groundwater are taken from ECMC Table 915-1: Organic Compounds in Groundwater and Groundwater Inorganic Parameters (Effective January 15, 2021)

ECMC = Colorado Energy & Carbon Management Commission

(<) = Analytical result is less than the indicated laboratory reporting limit

µg/L = micrograms per liter

mg/L = milligrams per liter

1,2,4-TMB = 1,2,4-Trimethylbenzene

1,3,5-TMB = 1,3,5-Trimethylbenzene

TDS = Total Dissolved Solids

**BOLD** = Analytical result is in exceedance of ECMC Table 915-1: Organic Compounds in Groundwater and Groundwater Inorganic Parameters