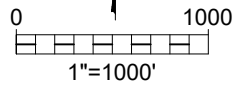
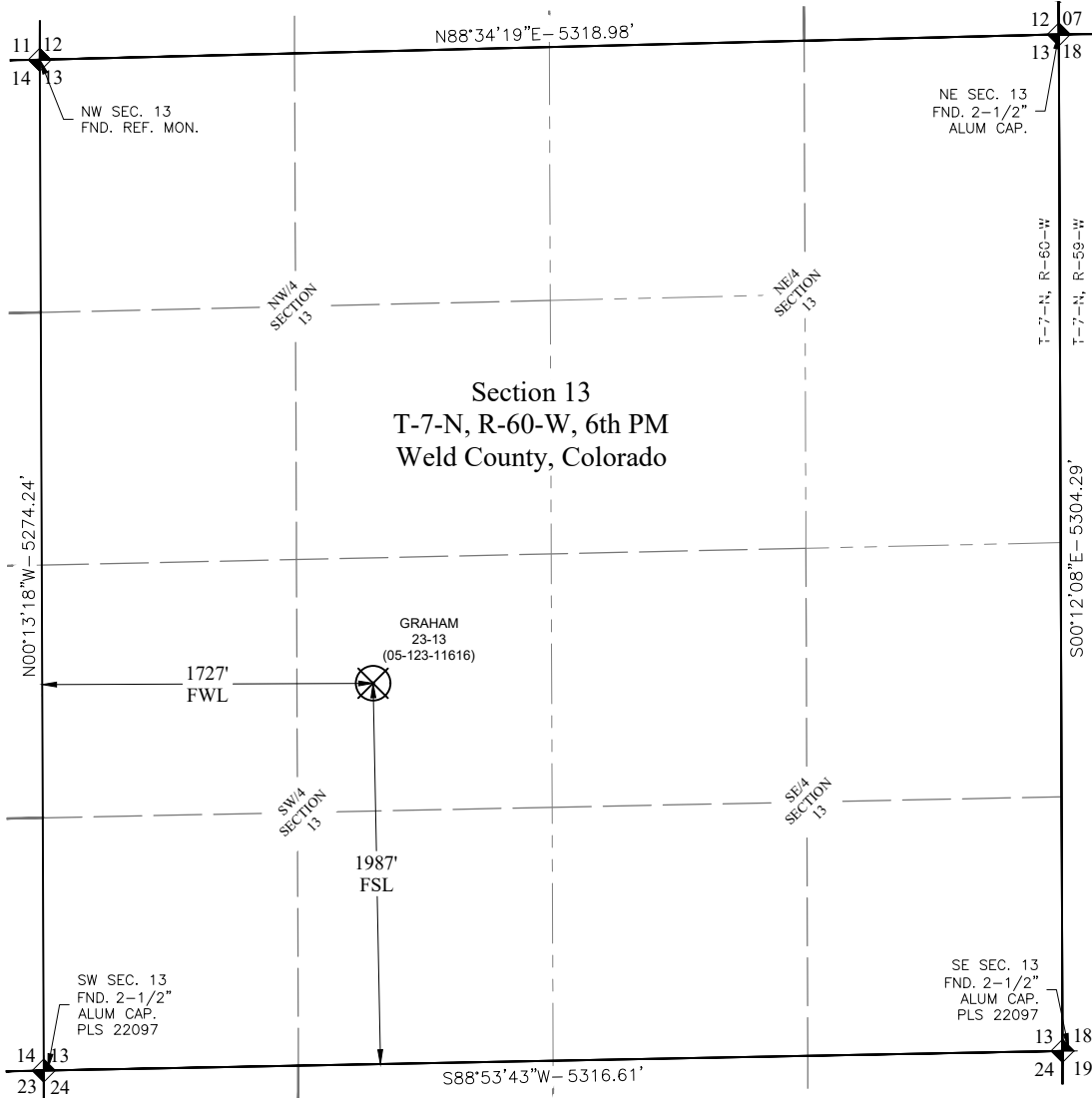


PLUGGED AND ABANDONED WELL EXHIBIT

GRAHAM 23-13 (05-123-11616)



LEGEND

- ALIQUOT MONUMENT AS DESCRIBED
- CALCULATED POSITION
- ABANDONED WELL

I, STANLEY W. DRANNON, a Licensed Land Surveyor in the State of Colorado, do hereby certify that this Exhibit is a true and correct representation of a survey made on the ground under my direct supervision and all facts are as shown herein.

Stanley W. Drannon
 Stanley Drannon
 Registered Professional Land Surveyor
 Colorado Registration No. 38543



Avery Land Services LLC
 1321 W. Main St. #522 Sterling, CO 80751

PDOP: 1.2
 INSTRUMENT OPERATOR: NATHAN NASIF
 LANDMAN: CORY NEIGHBORS
 SURFACE USE: RANGELAND

GRAHAM 23-13 (05-123-11616)				
SHL (GROUND EL. 4875')				
SHL FOOTAGE	SEC 1/4-1/4	LAT°	LONG°	
1987' FSL	1727' FWL	13 NE-SW	40.57343426	-104.04429123

DESCRIPTION: FOUND CAPPED WELL IN BELL HOLE

NOTES:

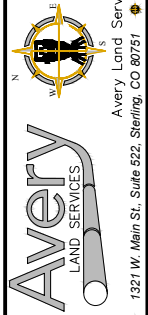
1. COORDINATES, BEARINGS, AND DISTANCES SHOWN ARE LAMBERT GRID AND CONFORM TO THE COLORADO STATE PLANE COORDINATE SYSTEM, "NORTH ZONE", NORTH AMERICAN DATUM 1983, U.S. SURVEY FOOT
2. DISTANCES TO SECTION LINES ARE MEASURED AT 90 DEGREES FROM SAID SECTION LINES.
3. GROUND ELEVATIONS ARE BASED ON AN OBSERVED GPS ELEVATION (NAVD 1988 DATUM)
4. THIS EXHIBIT WAS PREPARED WITHOUT THE BENEFIT OF A TITLE COMMITMENT. ONLY ABOVE GROUND SURFACE FEATURES WERE LOCATED AS A PART OF THIS SURVEY.
5. THIS MAP DOES NOT REPRESENT A BOUNDARY SURVEY.



SECTION 13 T-7-N, R-60-W, 6th PM
 WELD COUNTY, COLORADO

Survey Date: 07/17/25	Drawn By: SRC	Chk'd By: SWD
Date: July 21, 2025	SCALE: 1"=1000'	SHEET 1 OF 2

REFERENCE AREA PICTURES
 GRAHAM 23-13 (05-123-11616)
 BISON IV OPERATING, LLC



Avery Land Services
 1321 W. Main St., Suite 522, Sterling, CO 80751

REFERENCE AREA PICTURES

GRAHAM 23-13 (05-123-11616)
 LOCATION DESCRIPTION:
 NE 1/4 OF SW 1/4 OF
 SECTION 13 T-7-N, R-60-W, 6th P.M.
 WELD COUNTY, COLORADO

Revision	Date	Description

Field Date: 07/17/25

Drawing Date: 7/21/25

Drawn By: SRC

Sheet Number: