

**FLOWLINE DECOMMISSIONING
AND SITE ASSESSMENT
REPORT**

FRICO 37-15 FLOWLINE

**ECMC SPILL TRACKING # 489922
ECMC REMEDIATION # 37343**

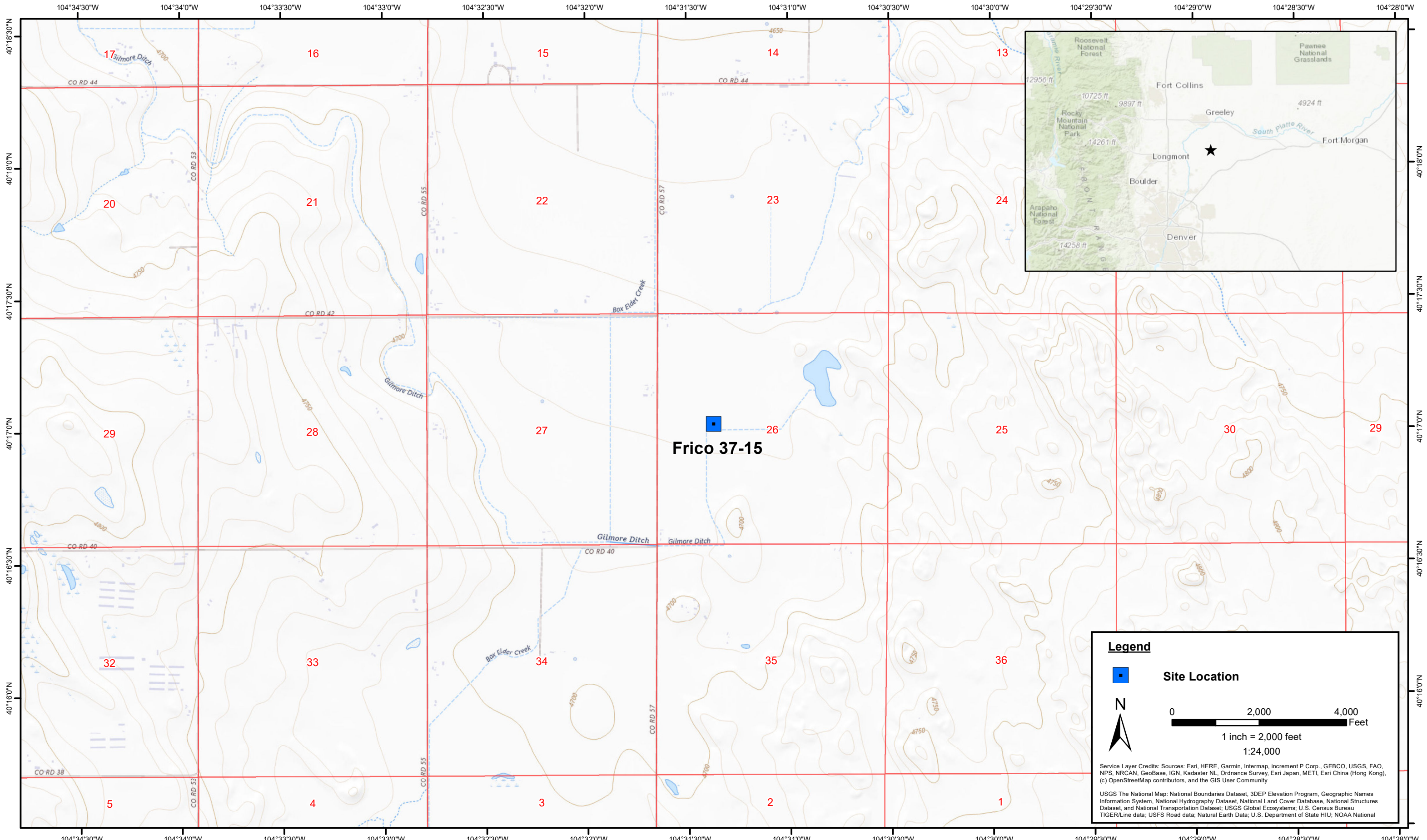


1099 18th Street
Suite 1500
Denver, CO 80202

Prepared by:



4725 Independence Street
Wheat Ridge, CO 80033



DATE:	April 2025
DESIGNED BY:	B. Nelson
DRAWN BY:	J. Woffinden



Noble Energy, Inc. – 100322 – DJ Basin
Frico 37-15
 SWSW, Section 15, Township 3 North, Range 65 West
 Weld County, Colorado

Site Location Map

Figure
1



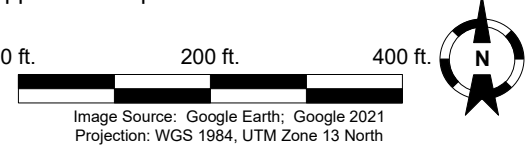
Legend

- Soil Sample Location – Field Screen (Collected via Trimble GPS)
- Soil Sample Location – Lab Analyzed (Collected via Trimble GPS)
- Estimated Soil Sample Location – Lab Analyzed
- Flowline Location (Collected via Trimble GPS)

Notes

1) All locations are approximate unless otherwise noted.

GPS – Global Positioning System
 PID – Photoionization Detector
 ppm – Parts per million



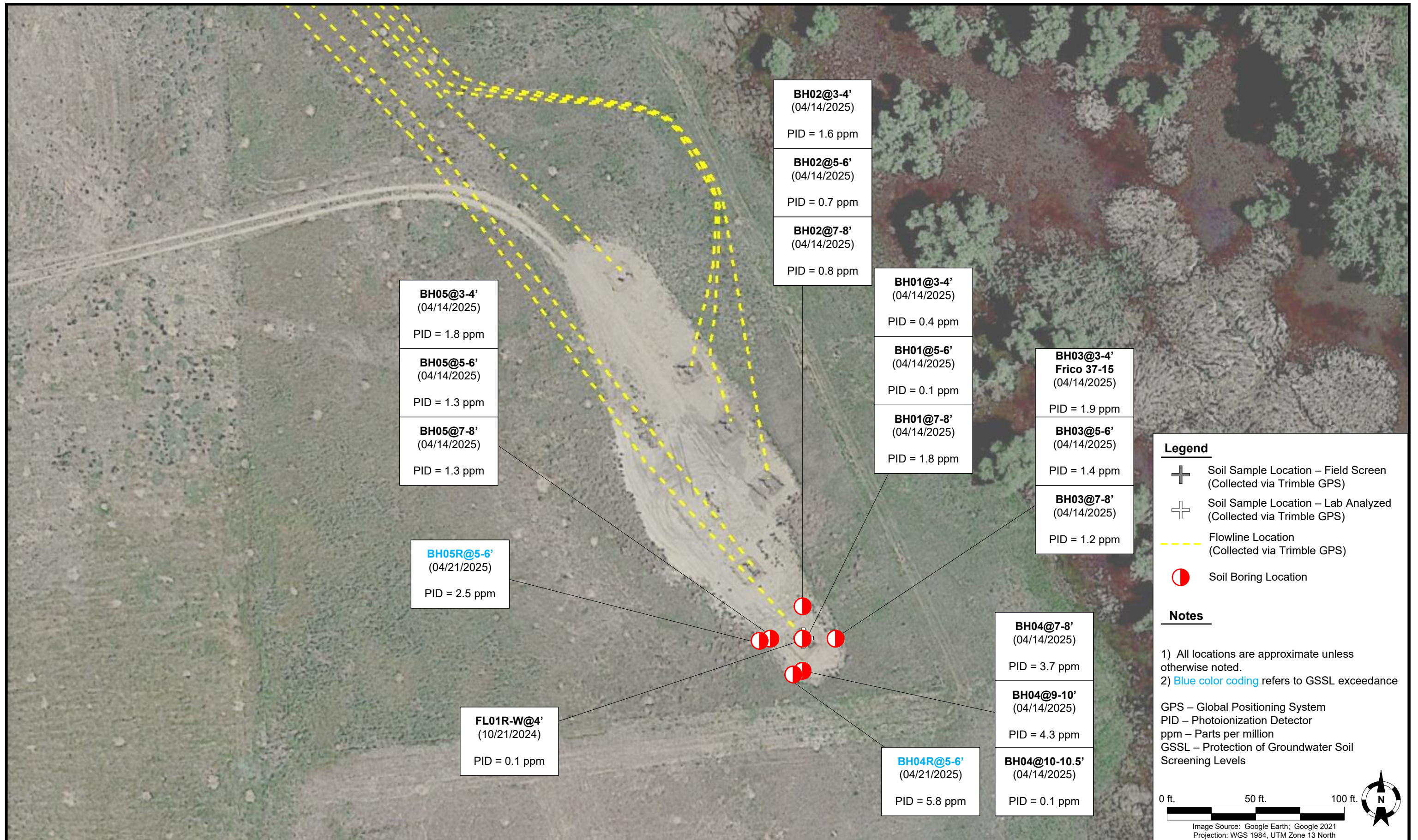
DATE:	October 23, 2024
DESIGNED BY:	J. Whritenour
DRAWN BY:	L. Reed

Tasman, Inc.
 4725 Independence Street
 Wheat Ridge, CO 80033

Noble Energy, Inc. – 100322 – DJ Basin
Former Frico 37-15 Flowline
 SWSW, Section 15, Township 3 North, Range 65 West
 Weld County, Colorado

Flowline Decommissioning
 Soil Analytical Results Map
 (10/21/2024, 10/22/2024 & 10/23/2024)

FIGURE
 2



Legend

- ⊕ Soil Sample Location – Field Screen (Collected via Trimble GPS)
- ⊕ Soil Sample Location – Lab Analyzed (Collected via Trimble GPS)
- Flowline Location (Collected via Trimble GPS)
- ⊙ Soil Boring Location

Notes

- 1) All locations are approximate unless otherwise noted.
- 2) Blue color coding refers to GSSL exceedance

GPS – Global Positioning System
 PID – Photoionization Detector
 ppm – Parts per million
 GSSL – Protection of Groundwater Soil Screening Levels

0 ft. 50 ft. 100 ft.

Image Source: Google Earth; Google 2021
 Projection: WGS 1984, UTM Zone 13 North

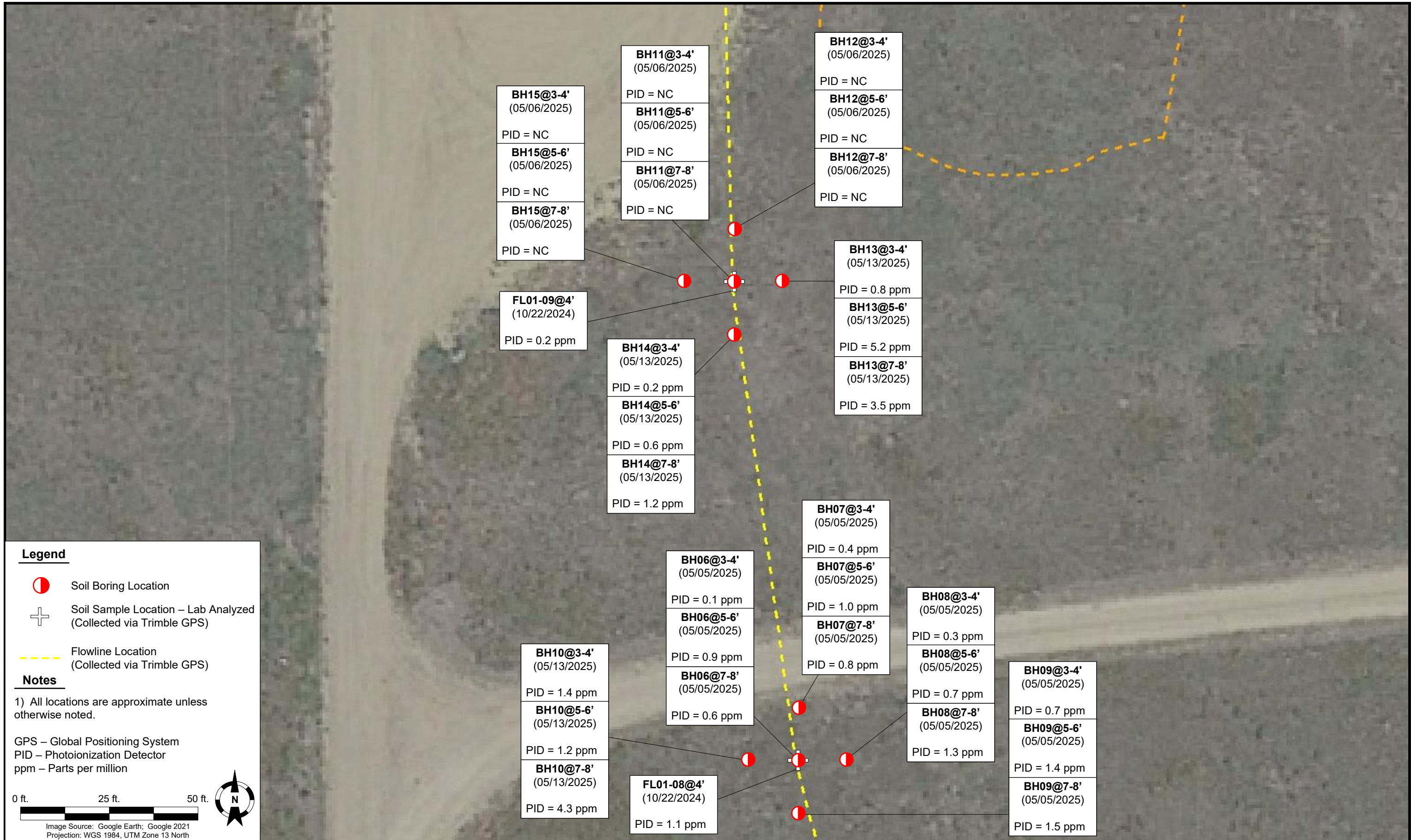
DATE: April 15, 2025
 DESIGNED BY: J. Whritenour
 DRAWN BY: L. Reed

Tasman, Inc.
 4725 Independence Street
 Wheat Ridge, CO 80033

Noble Energy, Inc. – 100322 – DJ Basin
Frico 37-15
 SWSW, Section 15, Township 3 North, Range 65 West
 Weld County, Colorado

Soil Boring Analytical Results Map
 (04/14/2025, 04/21/2025)

FIGURE 3



Legend

- Soil Boring Location
- Soil Sample Location – Lab Analyzed (Collected via Trimble GPS)
- Flowline Location (Collected via Trimble GPS)

Notes

1) All locations are approximate unless otherwise noted.

GPS – Global Positioning System
 PID – Photoionization Detector
 ppm – Parts per million

0 ft. 25 ft. 50 ft.

Image Source: Google Earth; Google 2021
 Projection: WGS 1984, UTM Zone 13 North

TABLE 1
FIELD DATA SUMMARY TABLE
(NOBLE ENERGY, INC. - 100322)
FRICO 37-15, WELD COUNTY, COLORADO
REM # 37343



Sample ID	Sample Date	Depth (ft. bgs)	GPS Data ¹ Latitude/Longitude		PDOP Value	VOC Concentration ² (ppm)
FL01R-W@4'	10/21/2024	4	40.219305	-104.655132	0.9	0.1
FL01-01@4'	10/21/2024	4	40.219580	-104.655455	1.0	0.2
FL01-02@4'	10/21/2024	4	40.219853	-104.655694	1.0	0.0
FL01-03@4'	10/21/2024	4	40.220085	-104.655922	0.8	0.0
FL01-04@4'	10/22/2024	4	40.220708	-104.656684	0.8	0.0
FL01-05@4'	10/22/2024	4	40.221088	-104.657035	0.8	0.1
FL01-06@4'	10/22/2024	4	40.221716	-104.657289	1	0.1
FL01-07@4'	10/22/2024	4	40.222303	-104.657491	1.6	0.2
FL01-08@4'	10/22/2024	4	40.222674	-104.657618	1.7	1.1
FL01-09@4'	10/22/2024	4	40.223046	-104.657680	1.1	0.2
FL01-10@4'	10/23/2024	4	40.223683	-104.657697	0.8	58.4
FL01-11@4'	10/23/2024	4	NC	NC	NC	0.1
FL01R-S@4'	10/23/2024	4	40.223892	-104.657827	0.8	1.2
BH01@3-4'	04/14/2025	3-4	40.219303	-104.655135	NC	0.4
BH01@5-6'	04/14/2025	5-6	40.219303	-104.655135	NC	0.1
BH01@7-8'	04/14/2025	7-8	40.219303	-104.655135	NC	1.8
BH02@3-4'	04/14/2025	3-4	40.219353	-104.655134	NC	1.6
BH02@5-6'	04/14/2025	5-6	40.219353	-104.655134	NC	0.7
BH02@7-8'	04/14/2025	7-8	40.219353	-104.655134	NC	0.8
BH03@3-4'	04/14/2025	3-4	40.219303	-104.655068	NC	1.9
BH03@5-6'	04/14/2025	5-6	40.219303	-104.655068	NC	1.4
BH03@7-8'	04/14/2025	7-8	40.219303	-104.655068	NC	1.2
BH04@3-4'	04/14/2025	3-4	40.219253	-104.655135	NC	NC
BH04R@5-6	04/21/2025	5-6	40.219253	-104.655135	NC	5.8
BH04@7-8'	04/14/2025	7-8	40.219253	-104.655135	NC	3.7
BH04@9-10'	04/14/2025	9-10	40.219253	-104.655135	NC	4.3
BH04@10-10.5'	04/14/2025	10-10.5	40.219253	-104.655135	NC	0.1
BH05@3-4'	04/14/2025	3-4	40.219303	-104.655200	NC	1.8
BH05@7-8'	04/14/2025	7-8	40.219303	-104.655200	NC	1.3
BH05R@5-6'	04/21/2025	5-6	40.219303	-104.655200	NC	2.5
BH06@3-4'	05/05/2025	3-4	40.222675	-104.657617	NC	0.1
BH06@5-6'	05/05/2025	5-6	40.222675	-104.657617	NC	0.9
BH06@7-8'	05/05/2025	7-8	40.222675	-104.657617	NC	0.6
BH07@3-4'	05/05/2025	3-4	40.222715	-104.657616	NC	0.4
BH07@5-6'	05/05/2025	5-6	40.222715	-104.657616	NC	1.0
BH07@7-8'	05/05/2025	7-8	40.222715	-104.657616	NC	0.8
BH08@3-4'	05/05/2025	3-4	40.222675	-104.657568	NC	0.3
BH08@5-6'	05/05/2025	5-6	40.222675	-104.657568	NC	0.7
BH08@7-8'	05/05/2025	7-8	40.222675	-104.657568	NC	1.3
BH09@3-4'	05/05/2025	3-4	40.222634	-104.657618	NC	0.7
BH09@5-6'	05/05/2025	5-6	40.222634	-104.657618	NC	1.4
BH09@7-8'	05/05/2025	7-8	40.222634	-104.657618	NC	1.5

TABLE 1
FIELD DATA SUMMARY TABLE
(NOBLE ENERGY, INC. - 100322)
FRICO 37-15, WELD COUNTY, COLORADO
REM # 37343



Sample ID	Sample Date	Depth (ft. bgs)	GPS Data ¹ Latitude/Longitude		PDOP Value	VOC Concentration ² (ppm)
BH10@3-4'	05/13/2025	3-4	40.222675	-104.657669	NC	1.4
BH10@5-6'	05/13/2025	5-6	40.222675	-104.657669	NC	1.2
BH10@7-8'	05/13/2025	7-8	40.222675	-104.657669	NC	4.3
BH11@3-4'	05/06/2025	3-4	40.223046	-104.657680	NC	NC
BH11@5-6'	05/06/2025	5-6	40.223046	-104.657680	NC	NC
BH11@7-8'	05/06/2025	7-8	40.223046	-104.657680	NC	NC
BH12@3-4'	05/06/2025	3-4	40.223087	-104.657680	NC	NC
BH12@5-6'	05/06/2025	5-6	40.223087	-104.657680	NC	NC
BH12@7-8'	05/06/2025	7-8	40.223087	-104.657680	NC	NC
BH13@3-4'	05/13/2025	3-4	40.223046	-104.657631	NC	0.8
BH13@5-6'	05/13/2025	5-6	40.223046	-104.657631	NC	5.2
BH13@7-8'	05/13/2025	7-8	40.223046	-104.657631	NC	3.5
BH14@3-4'	05/13/2025	3-4	40.223005	-104.657682	NC	0.2
BH14@5-6'	05/13/2025	5-6	40.223005	-104.657682	NC	0.6
BH14@7-8'	05/13/2025	7-8	40.223005	-104.657682	NC	1.2
BH15@3-4'	05/06/2025	3-4	40.223046	-104.657732	NC	NC
BH15@5-6'	05/06/2025	5-6	40.223046	-104.657732	NC	NC
BH15@7-8'	05/06/2025	7-8	40.223046	-104.657732	NC	NC
BKG01@4'	10/23/2024	4	40.220395	-104.657140	1.0	0.0
BKG02@4'	10/23/2024	4	40.221057	-104.657430	0.9	0.0
BKG03@4'	10/23/2024	4	NC	NC	NC	0.2
BKG04@4'	10/23/2024	4	40.221354	-104.656876	0.7	0.1
BKG05@4'	10/23/2024	4	40.220805	-104.656336	0.8	0.3
BKG06@5-6 ³	04/09/2025	5-6	40.218791	-104.654154	NC	0.4
BKG12@5-6 ³	04/09/2025	5-6	40.222141	-104.656875	NC	0.5
BKG19@3-4 ³	04/11/2025	3-4	40.223117	-104.658526	NC	1.6
BKG21@5-6 ³	04/11/2025	5-6	40.224419	-104.658535	NC	2.5
BKG22@5-6 ³	04/11/2025	5-6	40.225060	-104.658551	NC	0.4
BKG25@3-4 ³	04/11/2025	3-4	40.224290	-104.657191	NC	1.4
BKG30@5-6 ³	04/11/2025	5-6	40.225700	-104.655364	NC	0.7

Notes:

1. Global Positioning System (GPS) data is provided in decimal degrees using North American Datum (NAD) 83 UTM Zone 13 North.
 2. Volatile organic compound (VOC) concentrations are measured in the field using a photoionization detector (PID).
 3. Background collected as part of Frico Mass Background Portfolio (REM #34185)
- PDOP = Position Dilution of Precision
ppm = Parts per million
ft. = Feet
bgs = Below ground surface
NC = Not collected

TABLE 2
SUMMARY OF VOLATILE ORGANIC SOIL CHEMISTRY DATA
(NOBLE ENERGY, INC. - 100322)
FRICO 37-15, WELD COUNTY, COLORADO
REM # 37343



Sample ID	Sample Date	Depth (ft. bgs)	Benzene (mg/kg)	Toluene (mg/kg)	Ethyl-Benzene (mg/kg)	Xylenes (mg/kg)	1,2,4-Trimethyl-Benzene (mg/kg)	1,3,5-Trimethyl-Benzene (mg/kg)	Naphthalene (mg/kg)	TPH (mg/kg)	TPH GRO (mg/kg)	TPH DRO (mg/kg)	TPH ORO (mg/kg)
ECMC Table 915-1 Limits (Residential SSL)			1.2	490	5.8	58	30	27	2	500	500**		
ECMC Table 915-1 Limits (Protection of Groundwater SSL)			0.0026	0.69	0.78	9.9	0.0081	0.0087	0.0038	500	500**		
FL01R-W@4'	10/21/2024	4	<0.0020	<0.0050	<0.0050	<0.010	<0.0050	<0.0050	<0.0038	<50	<0.50	<50	<50
FL01-02@4'	10/21/2024	4	<0.0020	<0.0050	<0.0050	<0.010	<0.0050	<0.0050	<0.0038	<50	<0.50	<50	<50
FL01-05@4'	10/22/2024	4	<0.0020	<0.0050	<0.0050	<0.010	<0.0050	<0.0050	<0.0038	<50	<0.50	<50	<50
FL01-08@4'	10/22/2024	4	<0.0020	<0.0050	<0.0050	<0.010	<0.0050	<0.0050	<0.0038	<50	<0.50	<50	<50
FL01-09@4'	10/22/2024	4	<0.0020	<0.0050	<0.0050	<0.010	<0.0050	<0.0050	<0.0038	<50	<0.50	<50	<50
FL01-10@4'	10/23/2024	4	<0.0020	<0.0050	<0.0050	<0.010	<0.0050	<0.0050	<0.0038	<50	<0.50	<50	<50
FL01-11@4'	10/23/2024	4	<0.0020	<0.0050	<0.0050	<0.010	<0.0050	<0.0050	<0.0038	<50	<0.50	<50	<50
FL01R-S@4'	10/23/2024	4	<0.0020	<0.0050	<0.0050	<0.010	<0.0050	<0.0050	<0.0038	<50	<0.50	<50	<50
BH01@3-4'	04/14/2025	3-4	<0.0020	<0.0050	<0.0050	<0.010	<0.0050	<0.0050	<0.0038	<50	<0.50	<50	<50
BH01@5-6'	04/14/2025	5-6	<0.0020	<0.0050	<0.0050	<0.010	<0.0050	<0.0050	<0.0038	<50	<0.50	<50	<50
BH01@7-8'	04/14/2025	7-8	<0.0020	<0.0050	<0.0050	<0.010	<0.0050	<0.0050	<0.0038	<50	<0.50	<50	<50
BH02@3-4'	04/14/2025	3-4	<0.0020	<0.0050	<0.0050	<0.010	<0.0050	<0.0050	<0.0038	<50	<0.50	<50	<50
BH02@5-6'	04/14/2025	5-6	<0.0020	<0.0050	<0.0050	<0.010	<0.0050	<0.0050	<0.0038	<50	<0.50	<50	<50
BH02@7-8'	04/14/2025	7-8	<0.0020	<0.0050	<0.0050	<0.010	<0.0050	<0.0050	<0.0038	<50	<0.50	<50	<50
BH03@3-4'	04/14/2025	3-4	<0.0020	<0.0050	<0.0050	<0.010	<0.0050	<0.0050	<0.0038	<50	<0.50	<50	<50
BH03@5-6'	04/14/2025	5-6	<0.0020	<0.0050	<0.0050	<0.010	<0.0050	<0.0050	<0.0038	<50	<0.50	<50	<50
BH03@7-8'	04/14/2025	7-8	<0.0020	<0.0050	<0.0050	<0.010	<0.0050	<0.0050	<0.0038	<50	<0.50	<50	<50
BH04@3-4'	04/14/2025	3-4	<0.0020	<0.0050	<0.0050	<0.010	<0.0050	<0.0050	<0.0038	<50	<0.50	<50	<50
BH04R@5-6	04/21/2025	5-6	<0.0020	<0.0050	<0.0050	<0.010	<0.0050	<0.0050	<0.0038	<50	<0.50	<50	<50
BH04@7-8'	04/14/2025	7-8	<0.0020	<0.0050	<0.0050	<0.010	<0.0050	<0.0050	<0.0038	<50	<0.50	<50	<50
BH04@9-10'	04/14/2025	9-10	<0.0020	<0.0050	<0.0050	<0.010	<0.0050	<0.0050	<0.0038	<50	<0.50	<50	<50
BH04@10-10.5'	04/14/2025	10-10.5	<0.0020	<0.0050	0.0067	<0.010	<0.0050	0.020	0.0069	1.5	1.5	<50	<50
BH05@3-4'	04/14/2025	3-4	<0.0020	<0.0050	<0.0050	<0.010	<0.0050	<0.0050	<0.0038	<50	<0.50	<50	<50
BH05@7-8'	04/14/2025	7-8	<0.0020	<0.0050	0.011	0.12	0.028	0.024	0.0070	2.1	2.1	<50	<50
BH05R@5-6'	04/21/2025	5-6	<0.0020	<0.0050	<0.0050	<0.010	<0.0050	<0.0050	<0.0038	<50	<0.50	<50	<50
BH06@3-4'	05/05/2025	3-4	<0.0011	<0.0021	<0.0021	<0.0021	<0.0021	<0.0021	<0.0021	6.83	<0.21	<4.1	6.83
BH06@5-6'	05/05/2025	5-6	<0.0011	<0.0023	<0.0023	<0.0023	<0.0023	<0.0023	<0.0023	<50	<0.23	<4.6	<6.9
BH06@7-8'	05/05/2025	7-8	<0.0011	<0.0023	<0.0023	<0.0023	<0.0023	<0.0023	<0.0024	<50	<0.23	<4.7	<7.1
BH07@3-4'	05/05/2025	3-4	<0.0010	<0.0021	<0.0021	<0.0021	<0.0021	<0.0021	<0.0021	<50	<0.21	<3.9	<5.9
BH07@5-6'	05/05/2025	5-6	<0.0011	<0.0022	<0.0022	<0.0022	<0.0022	<0.0022	<0.0022	<50	<0.22	<4.5	<6.7
BH07@7-8'	05/05/2025	7-8	<0.0012	<0.0023	<0.0023	<0.0023	<0.0023	<0.0023	<0.0023	<50	<0.23	<4.7	<7.0
BH08@3-4'	05/05/2025	3-4	<0.0010	<0.0021	<0.0021	<0.0021	<0.0021	<0.0021	<0.0021	<50	<0.21	<4.2	<6.3
BH08@5-6'	05/05/2025	5-6	<0.0012	<0.0023	<0.0023	<0.0023	<0.0023	<0.0023	<0.0023	<50	<0.23	<4.6	<6.8

TABLE 2
SUMMARY OF VOLATILE ORGANIC SOIL CHEMISTRY DATA
(NOBLE ENERGY, INC. - 100322)
FRICO 37-15, WELD COUNTY, COLORADO
REM # 37343



Sample ID	Sample Date	Depth (ft. bgs)	Benzene (mg/kg)	Toluene (mg/kg)	Ethyl-Benzene (mg/kg)	Xylenes (mg/kg)	1,2,4-Trimethyl-Benzene (mg/kg)	1,3,5-Trimethyl-Benzene (mg/kg)	Naphthalene (mg/kg)	TPH (mg/kg)	TPH GRO (mg/kg)	TPH DRO (mg/kg)	TPH ORO (mg/kg)
ECMC Table 915-1 Limits (Residential SSL)			1.2	490	5.8	58	30	27	2	500	500**		
ECMC Table 915-1 Limits (Protection of Groundwater SSL)			0.0026	0.69	0.78	9.9	0.0081	0.0087	0.0038	500	500**		
BH08@7-8'	05/05/2025	7-8	<0.0012	<0.0023	<0.0023	<0.0023	<0.0023	<0.0023	<0.0023	<50	<0.23	<4.6	<6.8
BH09@3-4'	05/05/2025	3-4	<0.0010	<0.0020	<0.0020	<0.0020	<0.0020	<0.0020	<0.0020	<50	<0.20	<3.9	<5.9
BH09@5-6'	05/05/2025	5-6	<0.0011	<0.0021	<0.0021	<0.0021	<0.0021	<0.0021	<0.0021	<50	<0.21	<3.9	<5.9
BH09@7-8'	05/05/2025	7-8	<0.0011	<0.0022	<0.0022	<0.0022	<0.0022	<0.0022	<0.0022	<50	<0.22	<3.9	<5.8
BH10@3-4'	05/13/2025	3-4	<0.0010	<0.0021	<0.0021	<0.0021	<0.0021	<0.0021	<0.0021	<50	<0.21	<4.2	<6.2
BH10@5-6'	05/13/2025	5-6	<0.0011	<0.0022	<0.0022	<0.0022	<0.0022	<0.0022	<0.0022	<50	<0.22	<4.5	<6.8
BH10@7-8'	05/13/2025	7-8	<0.0011	<0.0022	<0.0022	<0.0022	<0.0022	<0.0022	<0.0022	<50	<0.22	<4.3	<6.5
BH11@3-4'	05/06/2025	3-4	<0.0010	<0.0020	<0.0020	<0.0020	<0.0020	<0.0020	<0.0020	<50	<0.20	<3.5	<5.3
BH11@5-6'	05/06/2025	5-6	<0.0012	<0.0023	<0.0023	<0.0023	<0.0023	<0.0023	<0.0023	<50	<0.23	<4.7	<7.0
BH11@7-8'	05/06/2025	7-8	<0.0011	<0.0022	<0.0022	<0.0022	<0.0022	<0.0022	<0.0022	<50	<0.22	<4.5	<6.8
BH12@3-4'	05/06/2025	3-4	<0.0010	<0.0020	<0.0020	<0.0020	<0.0020	<0.0020	<0.0020	<50	<0.20	<4.1	<6.2
BH12@5-6'	05/06/2025	5-6	<0.0012	<0.0023	<0.0023	<0.0023	<0.0023	<0.0023	<0.0023	<50	<0.23	<4.5	<6.7
BH12@7-8'	05/06/2025	7-8	<0.0011	<0.0023	<0.0023	<0.0023	<0.0023	<0.0023	<0.0023	<50	<0.23	<4.7	<7.0
BH13@3-4'	05/13/2025	3-4	<0.0010	<0.0020	<0.0020	<0.0020	<0.0020	<0.0020	<0.0020	<50	<0.20	<4.1	<6.1
BH13@5-6'	05/13/2025	5-6	<0.0011	<0.0022	<0.0022	<0.0022	<0.0022	<0.0022	<0.0022	<50	<0.22	<4.7	<7.0
BH13@7-8'	05/13/2025	7-8	<0.0011	<0.0022	<0.0022	<0.0022	<0.0022	<0.0022	<0.0022	<50	<0.22	<4.4	<6.5
BH14@3-4'	05/13/2025	3-4	<0.0010	<0.0020	<0.0020	<0.0020	<0.0020	<0.0020	<0.0020	<50	<0.20	<3.7	<5.5
BH14@5-6'	05/13/2025	5-6	<0.0011	<0.0023	<0.0023	<0.0023	<0.0023	<0.0023	<0.0023	<50	<0.23	<4.4	<6.6
BH14@7-8'	05/13/2025	7-8	<0.0011	<0.0021	<0.0021	<0.0021	<0.0021	<0.0021	<0.0021	<50	<0.21	<4.2	<6.2
BH15@3-4'	05/06/2025	3-4	<0.0010	<0.0020	<0.0020	<0.0020	<0.0020	<0.0020	<0.0020	<50	<0.20	<4.1	<6.2
BH15@5-6'	05/06/2025	5-6	<0.0011	<0.0023	<0.0023	<0.0023	<0.0023	<0.0023	<0.0023	<50	<0.23	<4.5	<6.7
BH15@7-8'	05/06/2025	7-8	<0.0012	<0.0024	<0.0024	<0.0024	<0.0024	<0.0024	<0.0024	<50	<0.24	<4.7	<7.1

Notes:

1. **Bold** values exceed the ECMC Table 915-1 limit(s).
2. Red & blue highlighted soil analytical values indicate an exceedance of the referenced soil screening level (SSL).
3. ** Summation of GRO+DRO+ORO must be less than 500 mg/kg.

ECMC = Energy and Carbon Management Commission

(<) = Analytical result is less than the indicated laboratory reporting limit.

TPH-GRO = Total petroleum hydrocarbons - gasoline range organics

TPH-DRO = Total petroleum hydrocarbons - diesel range organics

TPH-ORO = Total petroleum hydrocarbons - oil range organics

mg/kg = Milligrams per kilogram

ft. = Feet

bgs = Below ground surface

Analyzed outside of allotted hold times due to delays at Summit Scientific

TABLE 3
SUMMARY OF POLYCYCLIC AROMATIC HYDROCARBON SOIL CHEMISTRY DATA
(NOBLE ENERGY, INC. - 100322)
FRICO 37-15, WELD COUNTY, COLORADO
REM # 37343



Sample ID	Sample Date	Depth (ft. bgs)	Acenaphthene (mg/kg)	Anthracene (mg/kg)	Benzo (a) Anthracene (mg/kg)	Benzo (a) Pyrene (mg/kg)	Benzo (b) Fluoranthene (mg/kg)	Benzo (k) Fluoranthene (mg/kg)	Chrysene (mg/kg)	Dibenzo (a,h) Anthracene (mg/kg)	Fluoranthene (mg/kg)	Fluorene (mg/kg)	Indeno (1,2,3-cd) Pyrene (mg/kg)	Pyrene (mg/kg)	1-Methyl - Naphthalene (mg/kg)	2-Methyl - Naphthalene (mg/kg)
ECMC Table 915-1 Limits (Residential SSL)			360	1800	1.1	0.11	1.1	11	110	0.11	240	240	1.1	180	18	24
ECMC Table 915-1 Limits (Protection of Groundwater SSL)			0.55	5.8	0.011	0.24	0.3	2.9	9	0.096	8.9	0.54	0.98	1.3	0.006	0.019
BH11@5-6'	05/06/2025	5-6	<0.0047	<0.0047	<0.0059	<0.0047	<0.0047	<0.0047	<0.0047	<0.0047	<0.0047	<0.0047	<0.0047	<0.0047	<0.0047	<0.0047
BH11@7-8'	05/06/2025	7-8	<0.0047	<0.0047	<0.0059	<0.0047	<0.0047	<0.0047	<0.0047	<0.0047	<0.0047	<0.0047	<0.0047	<0.0047	<0.0047	<0.0047
BH12@3-4'	05/06/2025	3-4	<0.0041	<0.0041	<0.0052	<0.0041	<0.0041	<0.0041	<0.0041	<0.0041	<0.0041	<0.0041	<0.0041	<0.0041	<0.0041	<0.0041
BH12@5-6'	05/06/2025	5-6	<0.0047	<0.0047	<0.0059	<0.0047	<0.0047	<0.0047	<0.0047	<0.0047	<0.0047	<0.0047	<0.0047	<0.0047	<0.0047	<0.0047
BH12@7-8'	05/06/2025	7-8	<0.0047	<0.0047	<0.0058	<0.0047	<0.0047	<0.0047	<0.0047	<0.0047	<0.0047	<0.0047	<0.0047	<0.0047	<0.0047	<0.0047
BH13@3-4'	05/13/2025	3-4	<0.0042	<0.0042	<0.0052	<0.0042	<0.0042	<0.0042	<0.0042	<0.0042	<0.0042	<0.0042	<0.0042	<0.0042	<0.0042	<0.0042
BH13@5-6'	05/13/2025	5-6	<0.0047	<0.0047	<0.0059	<0.0047	<0.0047	<0.0047	<0.0047	<0.0047	<0.0047	<0.0047	<0.0047	<0.0047	<0.0047	<0.0047
BH13@7-8'	05/13/2025	7-8	<0.0047	<0.0047	<0.0058	<0.0047	<0.0047	<0.0047	<0.0047	<0.0047	<0.0047	<0.0047	<0.0047	<0.0047	<0.0047	<0.0047
BH14@3-4'	05/13/2025	3-4	<0.0042	<0.0042	<0.0053	<0.0042	<0.0042	<0.0042	<0.0042	<0.0042	<0.0042	<0.0042	<0.0042	<0.0042	<0.0042	<0.0042
BH14@5-6'	05/13/2025	5-6	<0.0048	<0.0048	<0.0060	<0.0048	<0.0048	<0.0048	<0.0048	<0.0048	<0.0048	<0.0048	<0.0048	<0.0048	<0.0048	<0.0048
BH14@7-8'	05/13/2025	7-8	<0.0045	<0.0045	<0.0057	<0.0045	<0.0045	<0.0045	<0.0045	<0.0045	<0.0045	<0.0045	<0.0045	<0.0045	<0.0045	<0.0045
BH15@3-4'	05/06/2025	3-4	<0.0041	<0.0041	<0.0051	<0.0041	<0.0041	<0.0041	<0.0041	<0.0041	<0.0041	<0.0041	<0.0041	<0.0041	<0.0041	<0.0041
BH15@5-6'	05/06/2025	5-6	<0.0046	<0.0046	<0.0058	<0.0046	<0.0046	<0.0046	<0.0046	<0.0046	<0.0046	<0.0046	<0.0046	<0.0046	<0.0046	<0.0046
BH15@7-8'	05/06/2025	7-8	<0.0049	<0.0049	<0.0062	<0.0049	<0.0049	<0.0049	<0.0049	<0.0049	<0.0049	<0.0049	<0.0049	<0.0049	<0.0049	<0.0049

Notes:

1. **Bold** values exceed the ECMC Table 915-1 limit(s).
 2. Red & blue highlighted soil analytical values indicate an exceedance of the referenced soil screening level (SSL).
 3. * Indicates laboratory minimum detection limit in excess of SSL.
- ECMC = Energy and Carbon Management Commission
(<) = Analytical result is less than the indicated laboratory reporting limit.
mg/kg = Milligrams per kilogram
ft. = Feet
bgs = Below ground surface

TABLE 4
SUMMARY OF SOIL SUITABILITY FOR RECLAMATION
(NOBLE ENERGY, INC. - 100322)
FRICO 37-15, WELD COUNTY, COLORADO
REM # 37343



Sample ID	Sample Date	Depth (ft. bgs)	pH (Standard Units)	EC (mmhos/cm)	SAR (Standard Units)	Boron (mg/L)
ECMC Table 915-1 Soil Suitability Limits			6 - 8.3	<4	<6	2
FL01R-W@4'	10/21/2024	4	8.66	0.383	0.0842	<2.00
FL01-02@4'	10/21/2024	4	8.28	0.536	1.15	<2.00
FL01-05@4'	10/22/2024	4	7.95	2.35	5.63	<2.00
FL01-08@4'	10/22/2024	4	8.75	0.202	0.383	<2.00
FL01-09@4'	10/22/2024	4	8.50	0.155	0.134	<2.00
FL01-10@4'	10/23/2024	4	8.16	0.312	0.333	<2.00
FL01-11@4'	10/23/2024	4	8.33	1.82	0.245	<2.00
FL01R-S@4'	10/23/2024	4	8.31	0.286	0.291	<2.00
BH01@3-4'	04/14/2025	3-4	7.92	0.636	0.724	<2.00
BH01@5-6'	04/14/2025	5-6	7.90	0.649	0.638	<2.00
BH01@7-8'	04/14/2025	7-8	8.18	0.746	0.0638	<2.00
BH02@3-4'	04/14/2025	3-4	7.39	1.01	1.91	<2.00
BH02@5-6'	04/14/2025	5-6	7.28	0.435	1.75	<2.00
BH02@7-8'	04/14/2025	7-8	7.92	1.16	2.20	<2.00
BH03@3-4'	04/14/2025	3-4	7.40	0.776	2.49	<2.00
BH03@5-6'	04/14/2025	5-6	7.77	1.16	2.00	<2.00
BH03@7-8'	04/14/2025	7-8	7.94	0.916	2.16	<2.00
BH04@3-4'	04/14/2025	3-4	8.23	0.365	0.995	<2.00
BH04R@5-6	04/21/2025	5-6	9.28	0.502	1.51	<2.00
BH04@7-8'	04/14/2025	7-8	8.55	1.04	4.45	<2.00
BH04@9-10'	04/14/2025	9-10	8.65	0.57	2.16	<2.00
BH04@10-10.5'	04/14/2025	10-10.5	9.04	0.874	2.89	<2.00
BH05@3-4'	04/14/2025	3-4	8.25	0.705	1.97	<2.00
BH05@7-8'	04/14/2025	7-8	8.60	0.822	4.97	<2.00
BH05R@5-6'	04/21/2025	5-6	8.46	0.729	3.85	<2.00
BH06@3-4'	05/05/2025	3-4	7.10	0.341	0.275	<0.50
BH06@5-6'	05/05/2025	5-6	7.09	0.481	2.40	<0.50
BH06@7-8'	05/05/2025	7-8	7.35	0.595	1.05	<0.50
BH07@3-4'	05/05/2025	3-4	7.19	0.208	0.423	<0.50
BH07@5-6'	05/05/2025	5-6	7.21	0.334	1.78	<0.50
BH07@7-8'	05/05/2025	7-8	6.83	0.408	1.81	<0.49
BH08@3-4'	05/05/2025	3-4	6.46	1.81	1.03	<0.49
BH08@5-6'	05/05/2025	5-6	6.9	1.14	2.20	<0.50

TABLE 4
SUMMARY OF SOIL SUITABILITY FOR RECLAMATION
(NOBLE ENERGY, INC. - 100322)
FRICO 37-15, WELD COUNTY, COLORADO
REM # 37343



Sample ID	Sample Date	Depth (ft. bgs)	pH (Standard Units)	EC (mmhos/cm)	SAR (Standard Units)	Boron (mg/L)
ECMC Table 915-1 Soil Suitability Limits			6 - 8.3	<4	<6	2
BH08@7-8'	05/05/2025	7-8	7.35	0.445	3.01	<0.50
BH09@3-4'	05/05/2025	3-4	7.32	0.223	0.196	<0.49
BH09@5-6'	05/05/2025	5-6	7.20	0.184	0.229	<0.50
BH09@7-8'	05/05/2025	7-8	6.77	0.244	0.796	<0.51
BH10@3-4'	05/13/2025	3-4	7.82	0.313	0.184	<0.48
BH10@5-6'	05/13/2025	5-6	7.72	0.187	0.221	<0.55
BH10@7-8'	05/13/2025	7-8	7.41	0.207	0.616	<0.54
BH11@3-4'	05/06/2025	3-4	7.91	0.225	0.269	<0.49
BH11@5-6'	05/06/2025	5-6	6.02	0.382	1.11	<0.49
BH11@7-8'	05/06/2025	7-8	7.31	0.861	1.98	<0.49
BH12@3-4'	05/06/2025	3-4	7.41	0.218	0.173	<0.49
BH12@5-6'	05/06/2025	5-6	7.51	0.240	0.570	<0.48
BH12@7-8'	05/06/2025	7-8	7.31	0.305	0.743	<0.49
BH13@3-4'	05/13/2025	3-4	7.33	0.264	0.215	<0.55
BH13@5-6'	05/13/2025	5-6	7.15	1.11	2.45	<0.55
BH13@7-8'	05/13/2025	7-8	7.02	0.951	2.66	<0.55
BH14@3-4'	05/13/2025	3-4	7.21	0.316	0.243	<0.55
BH14@5-6'	05/13/2025	5-6	7.33	1.08	1.19	<0.55
BH14@7-8'	05/13/2025	7-8	6.92	0.871	1.44	<0.54
BH15@3-4'	05/06/2025	3-4	7.21	0.229	0.192	<0.49
BH15@5-6'	05/06/2025	5-6	7.02	1.48	2.06	<0.49
BH15@7-8'	05/06/2025	7-8	7.13	1.90	2.55	<0.48
BKG01@4'	10/23/2024	4	7.41	0.430	0.801	<2.00
BKG02@4'	10/23/2024	4	7.55	1.18	4.85	<2.00
BKG03@4'	10/23/2024	4	6.92	0.0451	0.0836	<2.00
BKG04@4'	10/23/2024	4	8.11	0.727	4.16	<2.00
BKG05@4'	10/23/2024	4	7.72	0.563	5.37	<2.00
BKG06@5-6' ⁴	04/09/2025	5-6	8.07	2.59	6.91	<2.00
BKG12@5-6' ⁴	04/09/2025	5-6	8.91	0.468	2.63	<2.00
BKG19@3-4' ⁴	04/11/2025	3-4	8.04	0.115	0.0332	<2.00

TABLE 4
SUMMARY OF SOIL SUITABILITY FOR RECLAMATION
(NOBLE ENERGY, INC. - 100322)
FRICO 37-15, WELD COUNTY, COLORADO
REM # 37343



Sample ID	Sample Date	Depth (ft. bgs)	pH (Standard Units)	EC (mmhos/cm)	SAR (Standard Units)	Boron (mg/L)
ECMC Table 915-1 Soil Suitability Limits			6 - 8.3	<4	<6	2
BKG21@5-6' ⁴	04/11/2025	5-6	7.95	0.0872	0.130	<2.00
BKG22@5-6' ⁴	04/11/2025	5-6	8.79	0.144	0.229	<2.00
BKG25@3-4' ⁴	04/11/2025	3-4	8.14	1.21	2.21	<2.00
BKG30@5-6' ⁴	04/11/2025	5-6	7.91	1.78	5.67	<2.00
Maximum Background Concentration			8.91	-	-	-

Notes:

1. **Bold** faced values exceed the ECMC Table 915-1 limit(s), but are within background concentrations.
2. **Bold** faced values exceed the ECMC Table 915-1 limit(s) and native background concentrations.
3. Brown highlighted soil analytical values indicate a regulatory exceedance.
4. Background collected as part of Frico Mass Background Portfolio (REM #34185)

ECMC = Energy and Carbon Management Commission

(<) = Analytical result is less than the indicated laboratory reporting limit.

mg/L = Milligrams per liter

ft. = Feet

bgs = Below ground surface

EC = Electrical conductivity

SAR = Sodium adsorption ratio

mmhos/cm = Millimohs per centimeter

TABLE 5
SUMMARY OF METALS IN SOIL CHEMISTRY DATA
(NOBLE ENERGY, INC. - 100322)
FRICO 37-15, WELD COUNTY, COLORADO
REM # 37343



Sample ID	Sample Date	Depth (ft. bgs)	Arsenic (mg/kg)	Barium (mg/kg)	Cadmium (mg/kg)	Chromium (VI) ⁶ (mg/kg)	Copper (mg/kg)	Lead (mg/kg)	Nickel (mg/kg)	Selenium (mg/kg)	Silver (mg/kg)	Zinc (mg/kg)
ECMC Table 915-1 Limits (Residential SSL)			0.68	15000	71	0.3	3100	400	1500	390	390	23000
ECMC Table 915-1 Limits (Protection of Groundwater SSL)			0.29	82	0.38	0.00067	46	14	26	0.26	0.8	370
FL01R-W@4'	10/21/2024	4	2.05	156	0.254	<0.30*	9.49	8.50	4.37	<0.260	0.0235	17.4
FL01-02@4'	10/21/2024	4	2.68	78.6	<0.200	<0.30*	4.32	7.07	4.69	<0.260	0.0235	16.2
FL01-05@4'	10/22/2024	4	1.70	54.0	<0.200	<0.30*	3.44	4.82	3.60	<0.260	0.0340	14.4
FL01-08@4'	10/22/2024	4	2.56	94.6	<0.200	<0.30*	4.21	6.21	5.34	<0.260	0.0296	16.0
FL01-09@4'	10/22/2024	4	1.86	61.8	<0.200	<0.30*	3.81	5.92	3.57	<0.260	0.0328	14.1
FL01-10@4'	10/23/2024	4	2.72	82.9	<0.200	<0.30*	4.40	5.85	4.57	<0.260	0.0629	16.8
FL01-11@4'	10/23/2024	4	1.76	53.2	<0.200	<0.30*	2.80	4.09	3.06	<0.260	0.0233	11.4
FL01R-5@4'	10/23/2024	4	1.92	44.9	<0.200	<0.30*	3.76	4.40	3.46	<0.260	<0.0200	14.2
BH01@3-4'	04/14/2025	3-4	1.78	147	<0.200	<0.30*	9.64	7.24	3.84	<0.260	0.0233	17.4
BH01@5-6'	04/14/2025	5-6	2.73	197	<0.200	<0.30*	10.2	7.62	5.71	<0.260	0.026	20.4
BH01@7-8'	04/14/2025	7-8	2.23	204	<0.200	<0.30*	9.96	7.89	5.03	<0.260	0.026	19.1
BH02@3-4'	04/14/2025	3-4	1.19	53.7	<0.200	<0.30*	5.02	4.03	3.17	<0.260	0.023	13.4
BH02@5-6'	04/14/2025	5-6	1.32	62.2	<0.200	<0.30*	4.52	4.17	3.57	<0.260	<0.0200	13.6
BH02@7-8'	04/14/2025	7-8	1.19	72.6	<0.200	<0.30*	4.44	4.04	3.35	<0.260	<0.0200	13.4
BH03@3-4'	04/14/2025	3-4	2.31	63.5	<0.200	<0.30*	5.78	6.05	5.25	<0.260	0.039	19.5
BH03@5-6'	04/14/2025	5-6	1.50	50.8	<0.200	<0.30*	4.84	4.09	3.50	<0.260	0.089	14.5
BH03@7-8'	04/14/2025	7-8	1.82	104	<0.200	<0.30*	5.45	5.61	4.86	<0.260	0.025	19.3
BH04@3-4'	04/14/2025	3-4	2.32	104	<0.200	<0.30*	6.19	6.18	5.29	<0.260	0.025	18.5
BH04R@5-6	04/21/2025	5-6	5.32	288	0.343	<0.30*	7.93	13.0	7.12	0.373	0.060	25.5
BH04@7-8'	04/14/2025	7-8	3.44	281	0.249	<0.30*	14.6	23.4	8.54	0.485	0.048	34.7
BH04@9-10'	04/14/2025	9-10	1.35	187	<0.200	<0.30*	2.31	6.94	2.51	<0.260	0.025	6.6
BH04@10-10.5'	04/14/2025	10-10.5	3.94	287	0.250	<0.30*	13.4	27.4	9.58	0.605	0.051	36.7
BH05@3-4'	04/14/2025	3-4	3.01	77.1	<0.200	<0.30*	5.37	5.68	4.46	<0.260	0.026	16.9
BH05@7-8'	04/14/2025	7-8	3.71	234	0.262	<0.30*	12.1	22.1	9.06	0.529	0.050	35.1
BH05R@5-6'	04/21/2025	5-6	5.17	237	0.401	<0.30*	10.3	23.6	7.78	0.790	0.070	32.4
BH06@3-4'	05/05/2025	3-4	2.30	60.8	<0.13	<0.43*	4.70	6.40	5.20	2.90	<0.26	20.0
BH06@5-6'	05/05/2025	5-6	5.90	175	0.170	0.51	10.7	9.30	11.40	4.30	<0.29	39.6
BH06@7-8'	05/05/2025	7-8	6.90	112	<0.15	0.49	13.4	10.7	13.70	5.70	<0.30	43.2
BH07@3-4'	05/05/2025	3-4	1.90	57.6	<0.25	<0.43*	4.10	4.60	5.20	2.50	<0.49	17.2
BH07@5-6'	05/05/2025	5-6	5.10	139	<0.280	<0.47*	9.20	9.10	11.50	4.70	<0.56	34.9
BH07@7-8'	05/05/2025	7-8	4.70	124	<0.27	<0.46*	9.50	9.20	11.50	3.30	<0.54	32.9
BH08@3-4'	05/05/2025	3-4	2.40	72.5	<0.26	<0.44*	4.8	6.20	6.20	3.5	<0.51	20.2
BH08@5-6'	05/05/2025	5-6	5.10	123	<0.29	<0.48*	9.60	8.80	11.10	3.80	<0.57	35.5
BH08@7-8'	05/05/2025	7-8	4.70	100	<0.29	<0.48*	9.00	8.70	12.50	3.40	<0.58	31.6
BH09@3-4'	05/05/2025	3-4	1.70	49.2	<0.25	<0.42*	3.80	4.10	4.20	2.40	<0.5	17.0
BH09@5-6'	05/05/2025	5-6	1.90	72	<0.24	<0.43*	4.50	4.90	5.30	3.10	<0.49	20.3
BH09@7-8'	05/05/2025	7-8	2.10	59.5	<0.27	<0.45*	4.50	4.70	4.90	2.10	<0.54	18.2
BH10@3-4'	05/13/2025	3-4	1.60	46.9	<0.27	<0.85*	3.40	3.60	4.30	2.30	<0.53	15.4
BH10@5-6'	05/13/2025	5-6	4.40	99.1	<0.28	<0.94*	8.10	7.60	8.90	3.50	<0.56	29.2
BH10@7-8'	05/13/2025	7-8	5.70	175	<0.29	<0.98*	11.3	10.6	13.30	4.70	<0.58	40.4
BH11@3-4'	05/06/2025	3-4	2.00	54.4	<0.26	<0.42*	4.10	5.20	4.60	2.80	<0.53	20.3
BH11@5-6'	05/06/2025	5-6	5.50	180	<0.28	<0.48*	10.1	4.90	8.00	1.90	<0.56	21.1
BH11@7-8'	05/06/2025	7-8	7.10	1170	<0.27	<0.48*	5.0	3.30	6.00	2.30	<0.53	13.5
BH12@3-4'	05/06/2025	3-4	2.10	60.6	<0.25	<0.41*	4.10	12.10	4.40	2.20	<0.51	17.7

TABLE 5
SUMMARY OF METALS IN SOIL CHEMISTRY DATA
(NOBLE ENERGY, INC. - 100322)
FRICO 37-15, WELD COUNTY, COLORADO
REM # 37343



Sample ID	Sample Date	Depth (ft. bgs)	Arsenic (mg/kg)	Barium (mg/kg)	Cadmium (mg/kg)	Chromium (VI) ⁶ (mg/kg)	Copper (mg/kg)	Lead (mg/kg)	Nickel (mg/kg)	Selenium (mg/kg)	Silver (mg/kg)	Zinc (mg/kg)
ECMC Table 915-1 Limits (Residential SSL)			0.68	15000	71	0.3	3100	400	1500	390	390	23000
ECMC Table 915-1 Limits (Protection of Groundwater SSL)			0.29	82	0.38	0.00067	46	14	26	0.26	0.8	370
BH12@5-6'	05/06/2025	5-6	6.20	251	<0.27	<0.48*	8.70	4.20	7.90	1.70	<0.54	17.9
BH12@7-8'	05/06/2025	7-8	7.00	223	<0.27	<0.48*	6.60	5.60	10.10	2.60	<0.54	23.5
BH13@3-4'	05/13/2025	3-4	1.90	54.7	<0.26	<0.82*	3.80	5.40	4.20	2.60	<0.52	16.2
BH13@5-6'	05/13/2025	5-6	8.00	176	<0.30	<0.90*	9.80	5.60	9.20	2.30	<0.59	20.4
BH13@7-8'	05/13/2025	7-8	9.60	216	<0.29	<0.93*	8.50	6.90	10.60	3.30	<0.58	26.3
BH14@3-4'	05/13/2025	3-4	2.00	52.1	<0.26	<0.86*	4.00	5.50	4.20	2.30	<0.52	17.2
BH14@5-6'	05/13/2025	5-6	5.40	229	<0.29	<0.92*	10.9	6.10	9.80	3.10	<0.58	25.9
BH14@7-8'	05/13/2025	7-8	10.0	517	<0.28	<0.95*	10.3	6.60	11.00	3.60	<0.57	27.3
BH15@3-4'	05/06/2025	3-4	1.60	54.4	<0.24	<0.43*	3.40	3.60	4.00	2.20	<0.47	15.9
BH15@5-6'	05/06/2025	5-6	7.20	165	<0.27	<0.47*	10.9	8.10	11.90	4.30	<0.55	35.2
BH15@7-8'	05/06/2025	7-8	8.30	332	<0.29	<0.49*	8.90	4.10	8.40	1.90	<0.58	19.0
BKG01@4'	10/23/2024	4	1.14	39.2	<0.200	<0.30*	2.17	2.72	2.29	<0.260	<0.0200	8.67
BKG02@4'	10/23/2024	4	1.28	44.5	<0.200	<0.30*	2.81	3.99	3.29	<0.260	0.0217	11.3
BKG03@4'	10/23/2024	4	2.57	64.2	<0.200	<0.30*	3.30	5.60	4.38	<0.260	0.0380	16.4
BKG04@4'	10/23/2024	4	4.18	73.7	<0.200	<0.30*	4.71	7.44	6.04	<0.260	0.0419	19.6
BKG05@4'	10/23/2024	4	1.09	46.8	<0.200	<0.30*	2.33	3.18	2.59	<0.260	<0.0200	9.76
BKG06@5-6' ⁷	04/09/2025	5-6	1.47	183	<0.200	<0.30*	6.02	5.49	3.03	<0.260	0.0242	11.4
BKG12@5-6' ³	04/09/2025	5-6	1.45	170	<0.200	<0.30*	6.39	7.86	6.86	<0.260	0.0401	12.0
BKG19@3-4' ⁷	04/11/2025	3-4	2.07	58.4	<0.200	<0.30*	5.34	5.11	4.47	<0.260	0.0834	18.7
BKG21@5-6' ⁷	04/11/2025	5-6	3.58	159	<0.200	<0.30*	7.05	8.5	7.52	<0.260	0.0339	29.1
BKG22@5-6' ⁷	04/11/2025	5-6	2.81	106	<0.200	<0.30*	8.18	6.3	6.4	<0.260	0.0358	22.1
BKG25@3-4' ⁷	04/11/2025	3-4	4.36	106	<0.200	<0.30*	6.62	5.85	5.66	<0.260	0.031	19.0
BKG30@5-6' ⁷	04/11/2025	5-6	4.16	104	<0.200	<0.30*	6.59	7.56	8.64	<0.260	0.0241	25.3
1.25x Maximum Background Concentration			5.45	229	0.250	0.375	-	10.6	10.8	0.325	-	-

Notes:

- 1.** Bold faced values exceed the ECMC Table 915-1 limit(s), but are within 1.25x background concentrations.
- 2.** Red faced values exceed the ECMC Table 915-1 limit(s) and native background concentrations.
- Red & blue highlighted soil analytical values indicate an exceedance of the referenced soil screening level (SSL).
- Reporting limit used for 1.25 multiplier when all background results for a specific metal are non-detect.
- * Indicates laboratory minimum detection limit in excess of SSL.
6. Compound falls within the ECMC Table 915-1 footnote 9.
7. Background collected as part of Frico Mass Background Portfolio (REM #34185)

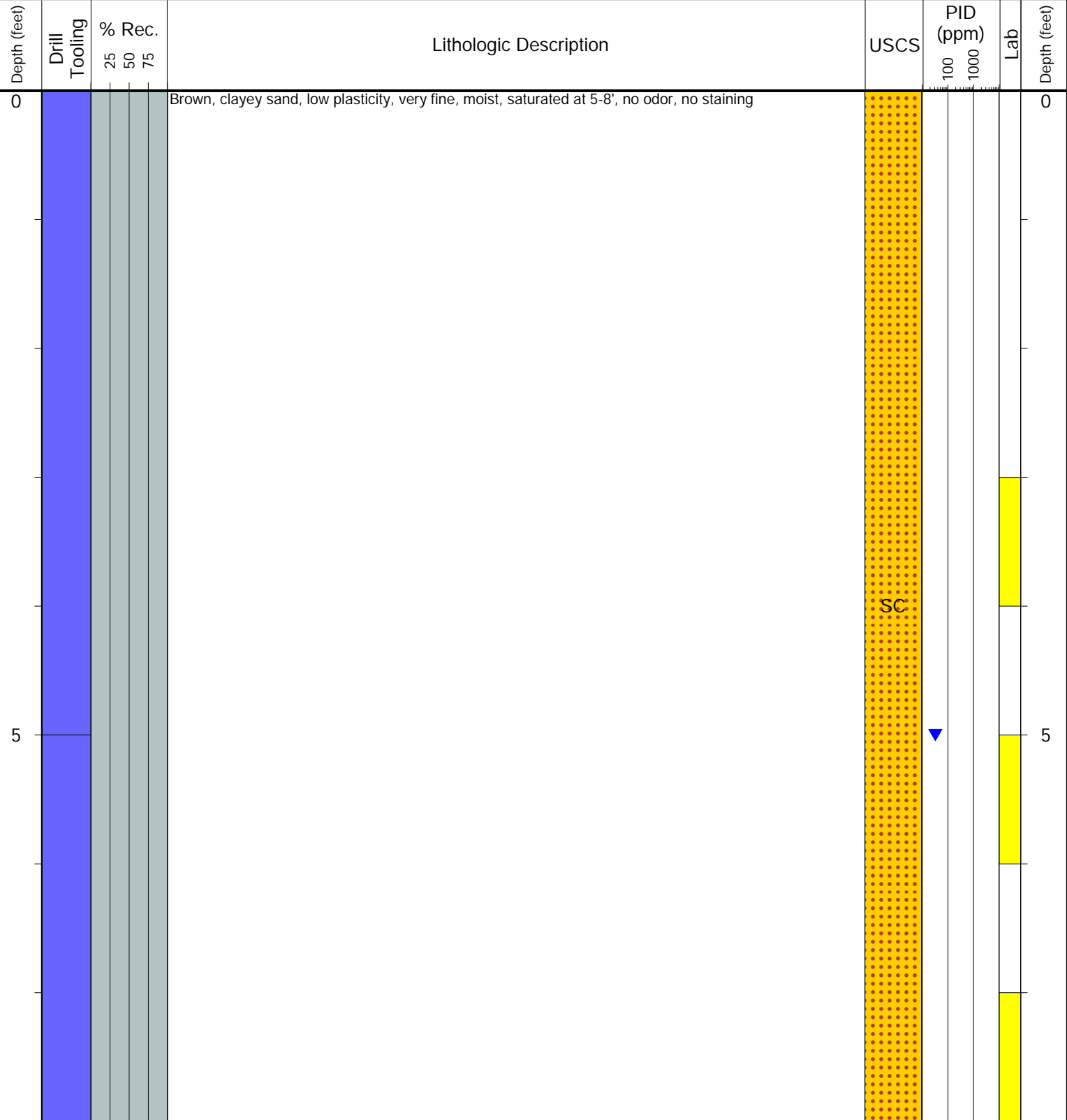
ECMC = Energy & Carbon Management Commission
 (<) = Analytical result is less than the indicated laboratory reporting limit.
 mg/kg = Milligrams per kilogram
 ft. = Feet
 bgs = Below ground surface



CLIENT: Noble
LOGGED BY: David Erwin
PROJECT MANAGER: Andy Sagen
DRILLING CONTRACTOR: Tasman
DRILLING EQUIPMENT: Hand Auger
DRILL BIT SIZE (INCHES): 3.25
DATE STARTED - COMPLETED: 4/14/2025 - 4/14/2024
TOTAL WELL DEPTH (FT. BGS): 8
DEPTH TO WATER (FT. BGS): 5

Frico 37-15
BORING ID: BH01
LOCATION: Source
LATITUDE (NAD 83): 40.219303
LONGITUDE (NAD 83): -104.655135
GROUND ELEVATION (FT. AMSL): Not Measured
ABANDONMENT METHOD: Native Material

4725 Independence St.
Wheat Ridge, CO 80033



Drilling / Sample Method:

- Macro-Core
- Hand Auger
- Expendable Well Tip
- HydroPunch Groundwater Sampler

Laboratory Sample Types:

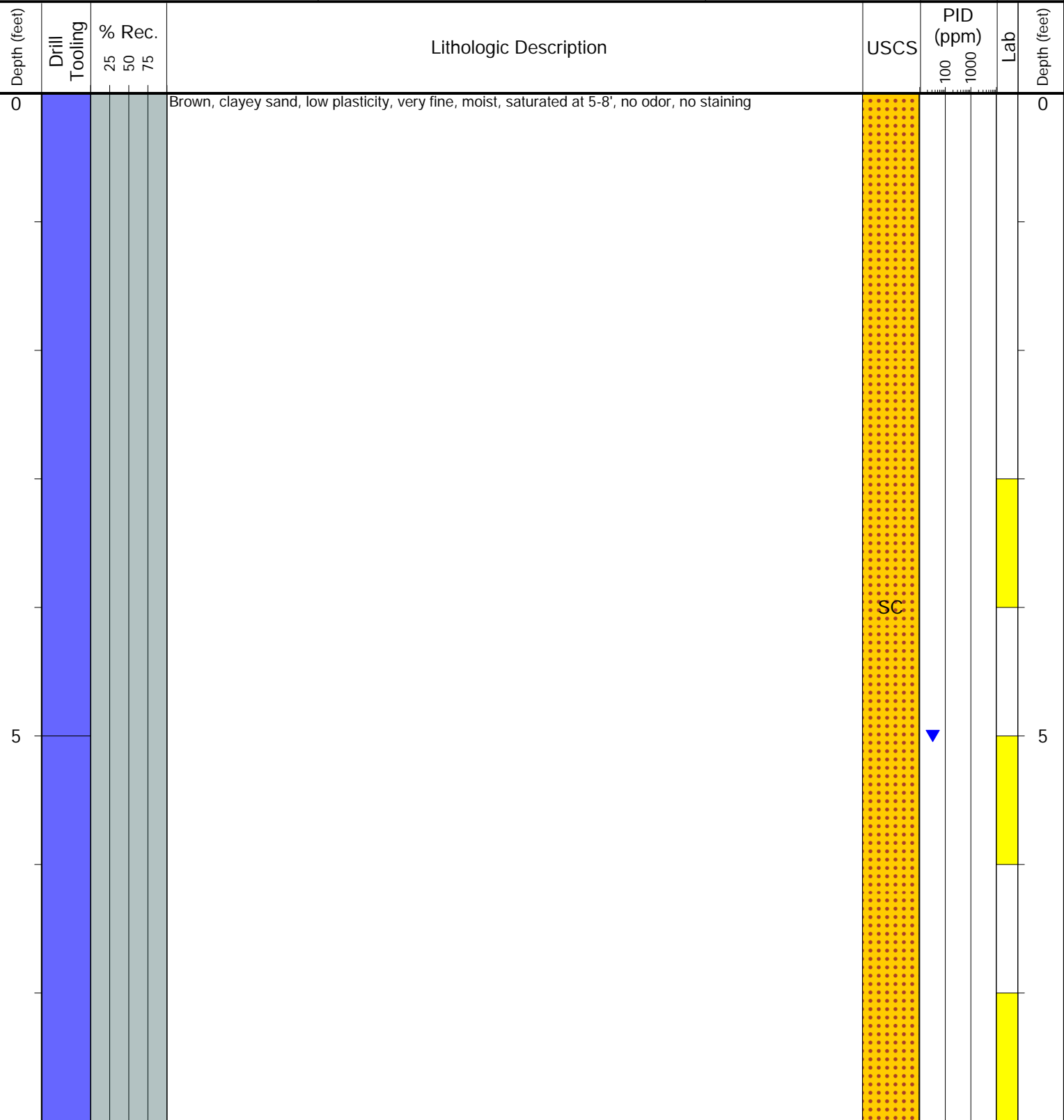
- Geotechnical Lab
- Analytical Chemistry Lab
- Geotechnical & Analytical Chemistry Lab



CLIENT: Noble
LOGGED BY: David Erwin
PROJECT MANAGER: Andy Sagen
DRILLING CONTRACTOR: Tasman
DRILLING EQUIPMENT: Hand Auger
DRILL BIT SIZE (INCHES): 3.25
DATE STARTED - COMPLETED: 4/14/2025 - 4/14/2025
TOTAL WELL DEPTH (FT. BGS): 8
DEPTH TO WATER (FT. BGS): 5

Frico 37-15
BORING ID: BH02
LOCATION: N of BH01
LATITUDE (NAD 83): 40.219353
LONGITUDE (NAD 83): -104.655134
GROUND ELEVATION (FT. AMSL): Not Measured
ABANDONMENT METHOD: Native Material

4725 Independence St.
Wheat Ridge, CO 80033



Drilling / Sample Method:
 Macro-Core (Green) Expendable Well Tip (Dark Green) Hand Auger (Blue) HydroPunch Groundwater Sampler (Dark Blue)

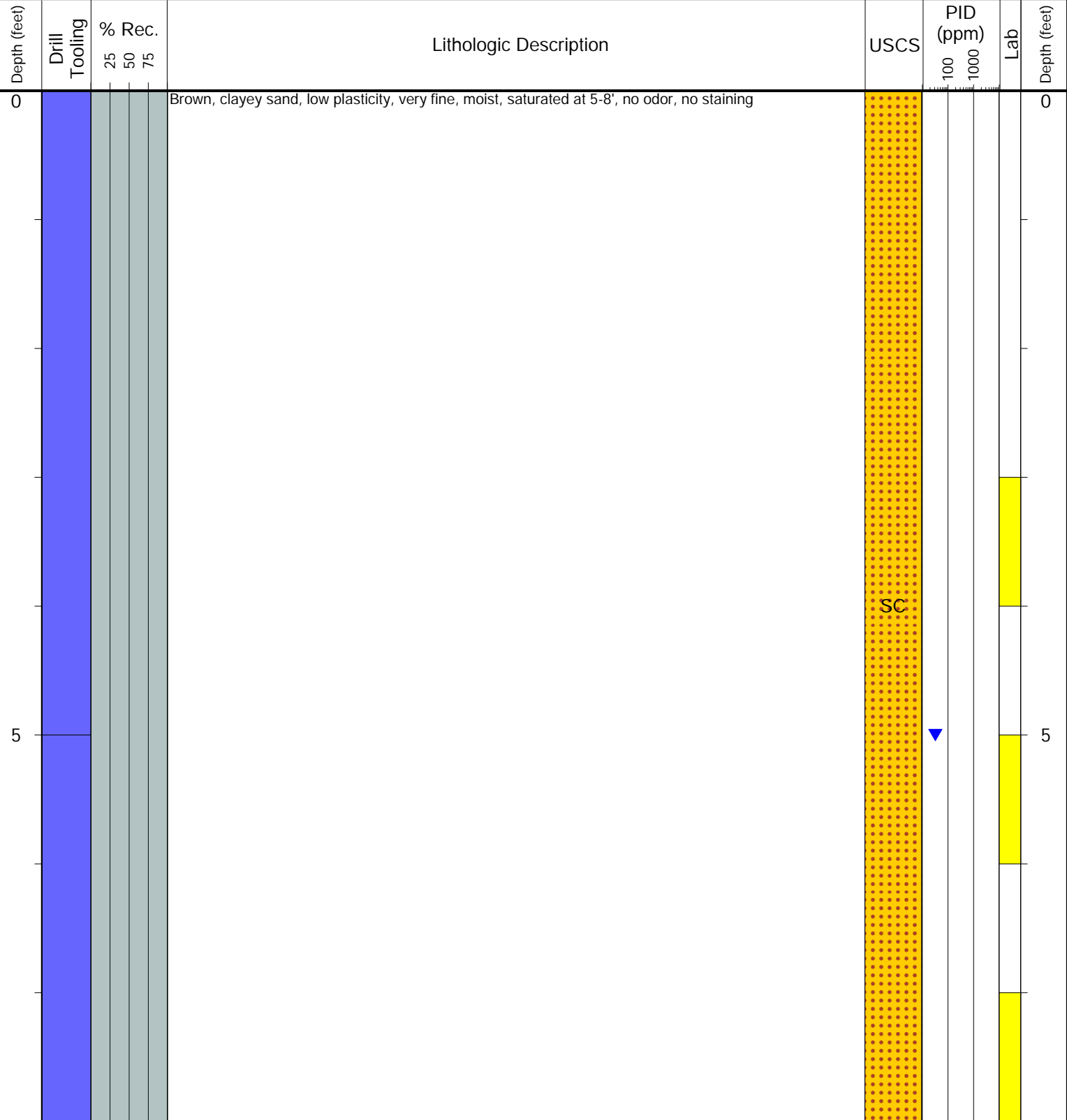
Laboratory Sample Types:
 Geotechnical Lab (Purple) Analytical Chemistry Lab (Yellow) Geotechnical & Analytical Chemistry Lab (Blue/Yellow)



CLIENT: Noble
LOGGED BY: David Erwin
PROJECT MANAGER: Andy Sagen
DRILLING CONTRACTOR: Tasman
DRILLING EQUIPMENT: Hand Auger
DRILL BIT SIZE (INCHES): 3.25
DATE STARTED - COMPLETED: 4/14/2025 - 4/14/2025
TOTAL WELL DEPTH (FT. BGS): 8
DEPTH TO WATER (FT. BGS): 5

Frico 37-15
BORING ID: BH03
LOCATION: SE of BH01
LATITUDE (NAD 83): 40.219303
LONGITUDE (NAD 83): -104.655068
GROUND ELEVATION (FT. AMSL): Not Measured
ABANDONMENT METHOD: Native Material

4725 Independence St.
Wheat Ridge, CO 80033



Drilling / Sample Method:

- Macro-Core
- Hand Auger
- Expendable Well Tip
- HydroPunch Groundwater Sampler

Laboratory Sample Types:

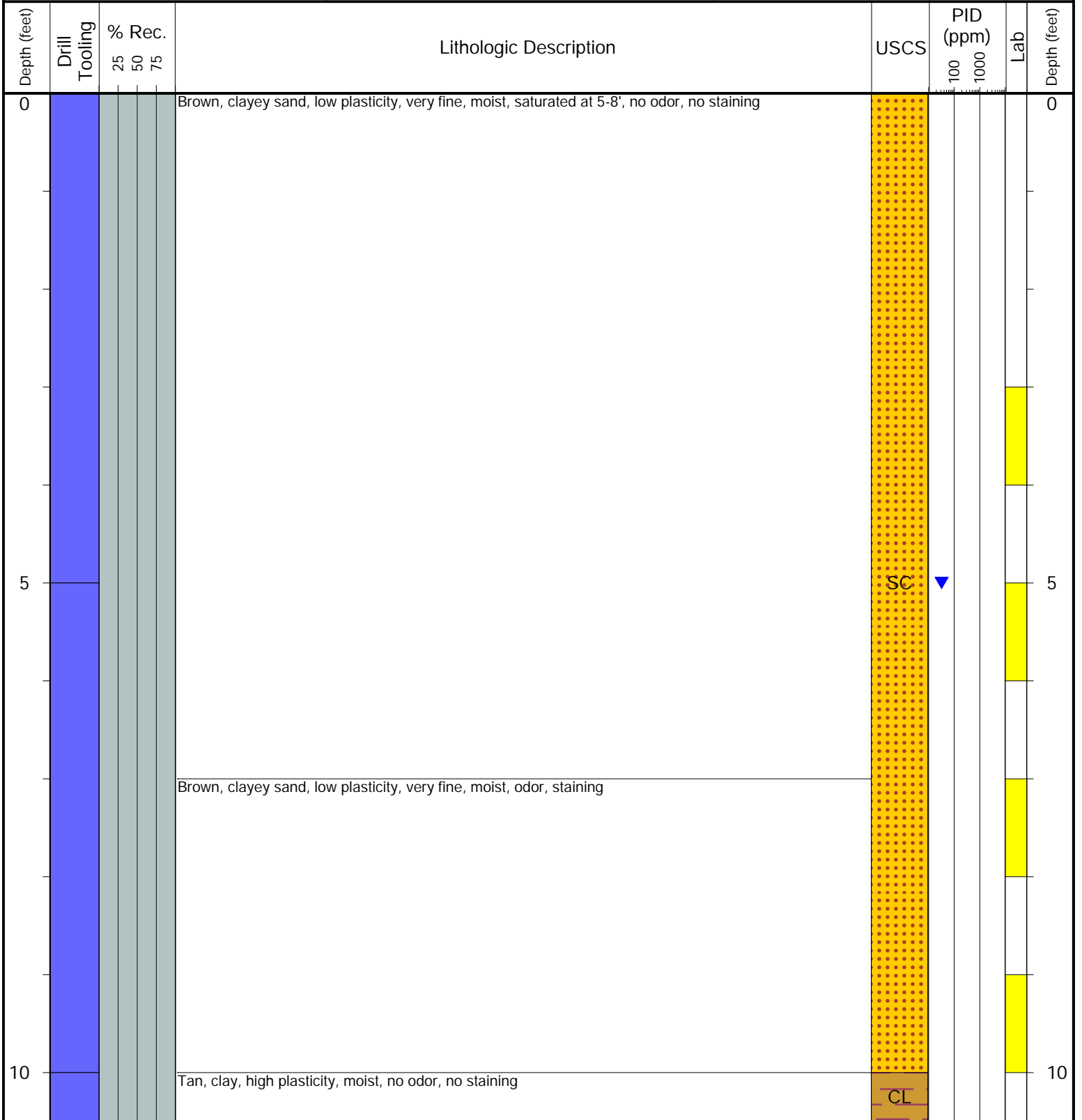
- Geotechnical Lab
- Analytical Chemistry Lab
- Geotechnical & Analytical Chemistry Lab



CLIENT: Noble
LOGGED BY: David Erwin
PROJECT MANAGER: Andy Sagen
DRILLING CONTRACTOR: Tasman
DRILLING EQUIPMENT: Hand Auger
DRILL BIT SIZE (INCHES): 3.25
DATE STARTED - COMPLETED: 4/14/2025 - 4/14/2025
TOTAL WELL DEPTH (FT. BGS): 10.5
DEPTH TO WATER (FT. BGS): 5

Frico 37-15
BORING ID: BH04
LOCATION: 20' SW of BH01
LATITUDE (NAD 83): 40.219253
LONGITUDE (NAD 83): -104.655135
GROUND ELEVATION (FT. AMSL): Not Measured
ABANDONMENT METHOD: Native Material

4725 Independence St.
 Wheat Ridge, CO 80033



Drilling / Sample Method:

- Macro-Core
- Hand Auger
- Expendable Well Tip
- HydroPunch Groundwater Sampler

Laboratory Sample Types:

- Geotechnical Lab
- Analytical Chemistry Lab
- Geotechnical & Analytical Chemistry Lab



CLIENT: Noble
LOGGED BY: Billy Morrow
PROJECT MANAGER: Andy Sagen
DRILLING CONTRACTOR: Tasman
DRILLING EQUIPMENT: Hand Auger
DRILL BIT SIZE (INCHES): 3.25
DATE STARTED - COMPLETED: 4/21/2025 - 4/21/2025
TOTAL WELL DEPTH (FT. BGS): 6
DEPTH TO WATER (FT. BGS): Not Encountered ▼

Frico 37-15
BORING ID: BH04R
LOCATION: S of BH05R
LATITUDE (NAD 83): 40.219253
LONGITUDE (NAD 83): -104.655135
GROUND ELEVATION (FT. AMSL): Not Measured
ABANDONMENT METHOD: Native Material

4725 Independence St.
 Wheat Ridge, CO 80033

Depth (feet)	Drill Tooling	% Rec. 25 50 75	Lithologic Description	USCS	PID (ppm)		Lab	Depth (feet)
					100	1000		
0	Hand Auger		Brown, sand, well graded, fine to medium grain, moist, no odor, no staining	SW				0
5			Brown, sand, well graded, fine to medium grain, saturated, slight odor, grey staining					5

Drilling / Sample Method:

- Macro-Core
- Hand Auger
- Expendable Well Tip
- HydroPunch Groundwater Sampler

Laboratory Sample Types:

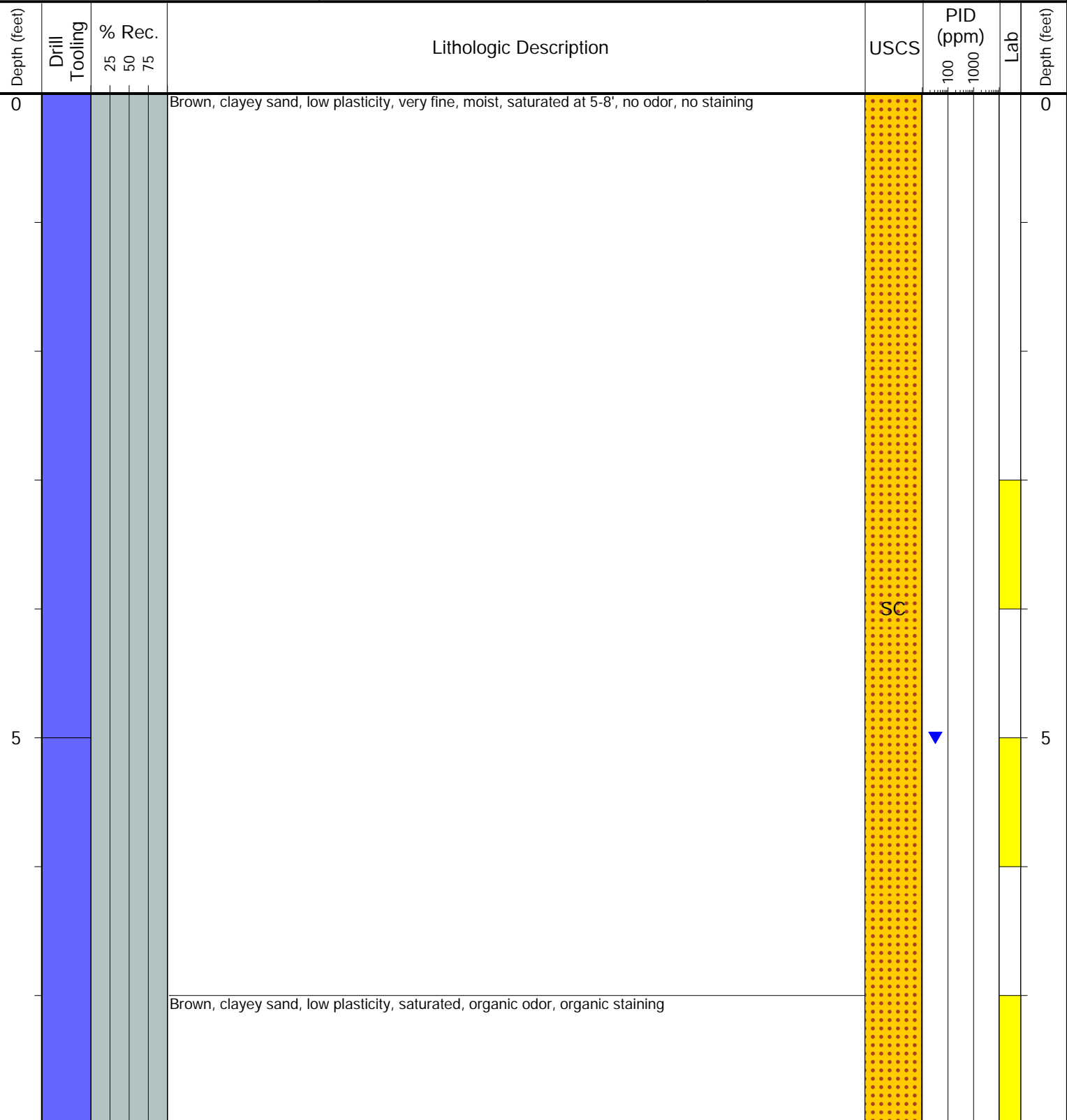
- Geotechnical Lab
- Analytical Chemistry Lab
- Geotechnical & Analytical Chemistry Lab



CLIENT: Noble
LOGGED BY: David Erwin
PROJECT MANAGER: Andy Sagen
DRILLING CONTRACTOR: Tasman
DRILLING EQUIPMENT: Hand Auger
DRILL BIT SIZE (INCHES): 3.25
DATE STARTED - COMPLETED: 4/14/2025 - 4/14/2025
TOTAL WELL DEPTH (FT. BGS): 8
DEPTH TO WATER (FT. BGS): 5 ▼

Frico 37-15
BORING ID: BH05
LOCATION: NE of source
LATITUDE (NAD 83): 40.219303
LONGITUDE (NAD 83): -104.655200
GROUND ELEVATION (FT. AMSL): Not Measured
ABANDONMENT METHOD: Native Material

4725 Independence St.
Wheat Ridge, CO 80033



Drilling / Sample Method:

- Macro-Core
- Hand Auger
- HydroPunch Groundwater Sampler
- Expendable Well Tip

Laboratory Sample Types:

- Geotechnical Lab
- Analytical Chemistry Lab
- Geotechnical & Analytical Chemistry Lab



CLIENT: Noble
LOGGED BY: Billy Morrow
PROJECT MANAGER: Andy Sagen
DRILLING CONTRACTOR: Tasman
DRILLING EQUIPMENT: Hand Auger
DRILL BIT SIZE (INCHES): 3.25
DATE STARTED - COMPLETED: 4/21/2025 - 4/21/2025
TOTAL WELL DEPTH (FT. BGS): 6
DEPTH TO WATER (FT. BGS): Not Encountered ▼

Frico 37-15
BORING ID: BH05R
LOCATION: N of BH04R
LATITUDE (NAD 83): 40.219303
LONGITUDE (NAD 83): -104.655200
GROUND ELEVATION (FT. AMSL): Not Measured
ABANDONMENT METHOD: Native Material

4725 Independence St.
Wheat Ridge, CO 80033

Depth (feet)	Drill Tooling	% Rec. 25 50 75	Lithologic Description	USCS	PID (ppm)		Lab	Depth (feet)
					100	1000		
0	Hand Auger		Brown, sand, well graded, fine to medium grain, moist, no odor, no staining	SW				0
5			Brown, sand, well graded, fine to medium grain, moist, slight odor, grey staining					5

Drilling / Sample Method:

- Macro-Core
- Hand Auger
- Expendable Well Tip
- HydroPunch Groundwater Sampler

Laboratory Sample Types:

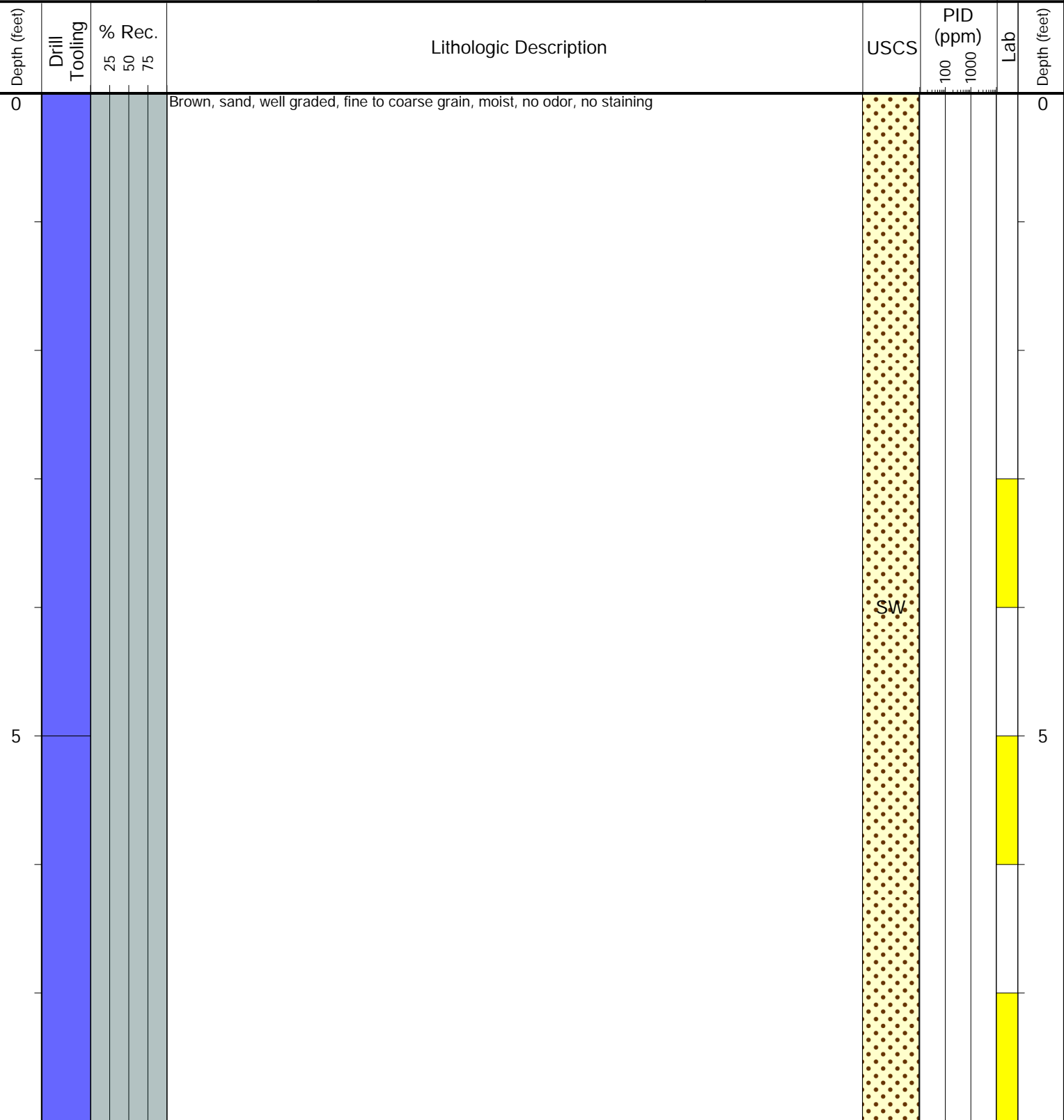
- Geotechnical Lab
- Analytical Chemistry Lab
- Geotechnical & Analytical Chemistry Lab



CLIENT: Noble
LOGGED BY: Billy Morrow
PROJECT MANAGER: Andy Sagen
DRILLING CONTRACTOR: Tasman
DRILLING EQUIPMENT: Hand Auger
DRILL BIT SIZE (INCHES): 3.25
DATE STARTED - COMPLETED: 5/5/2025 - 5/5/2025
TOTAL WELL DEPTH (FT. BGS): 8
DEPTH TO WATER (FT. BGS): Not Encountered ▼

Frico 37-15
BORING ID: BH06
LOCATION: S of BH07
LATITUDE (NAD 83): 40.222675
LONGITUDE (NAD 83): -104.657617
GROUND ELEVATION (FT. AMSL): Not Measured
ABANDONMENT METHOD: Native Material

4725 Independence St.
Wheat Ridge, CO 80033



Drilling / Sample Method:

- Macro-Core
- Hand Auger
- Expendable Well Tip
- HydroPunch Groundwater Sampler

Laboratory Sample Types:

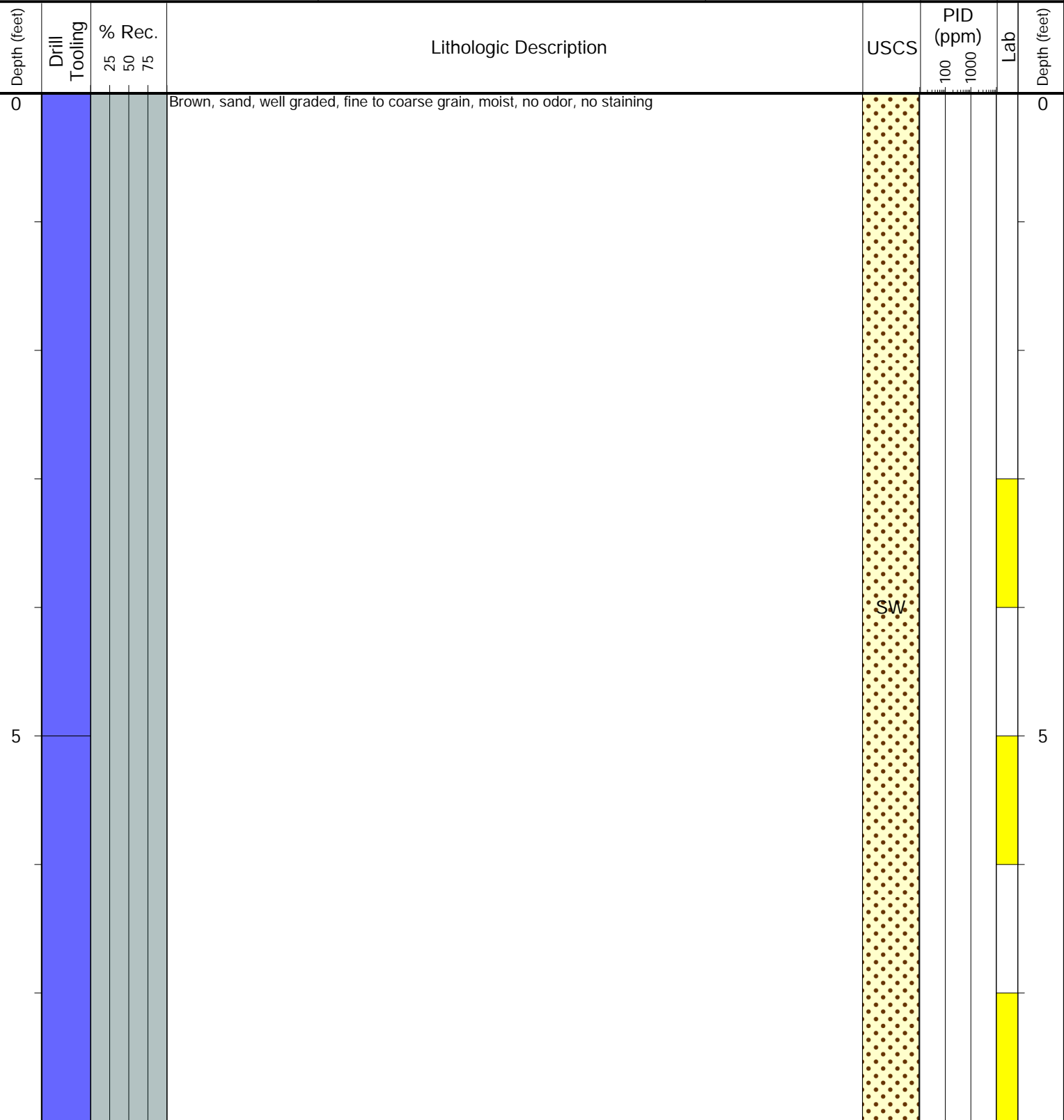
- Geotechnical Lab
- Analytical Chemistry Lab
- Geotechnical & Analytical Chemistry Lab



CLIENT: Noble
LOGGED BY: Billy Morrow
PROJECT MANAGER: Andy Sagen
DRILLING CONTRACTOR: Tasman
DRILLING EQUIPMENT: Hand Auger
DRILL BIT SIZE (INCHES): 3.25
DATE STARTED - COMPLETED: 5/5/2025 - 5/5/2025
TOTAL WELL DEPTH (FT. BGS): 8
DEPTH TO WATER (FT. BGS): Not Encountered ▼

Frico 37-15
BORING ID: BH07
LOCATION: N of BH06
LATITUDE (NAD 83): 40.222715
LONGITUDE (NAD 83): -104.657616
GROUND ELEVATION (FT. AMSL): Not Measured
ABANDONMENT METHOD: Native Material

4725 Independence St.
Wheat Ridge, CO 80033



Drilling / Sample Method:

- Macro-Core
- Hand Auger
- Expendable Well Tip
- HydroPunch Groundwater Sampler

Laboratory Sample Types:

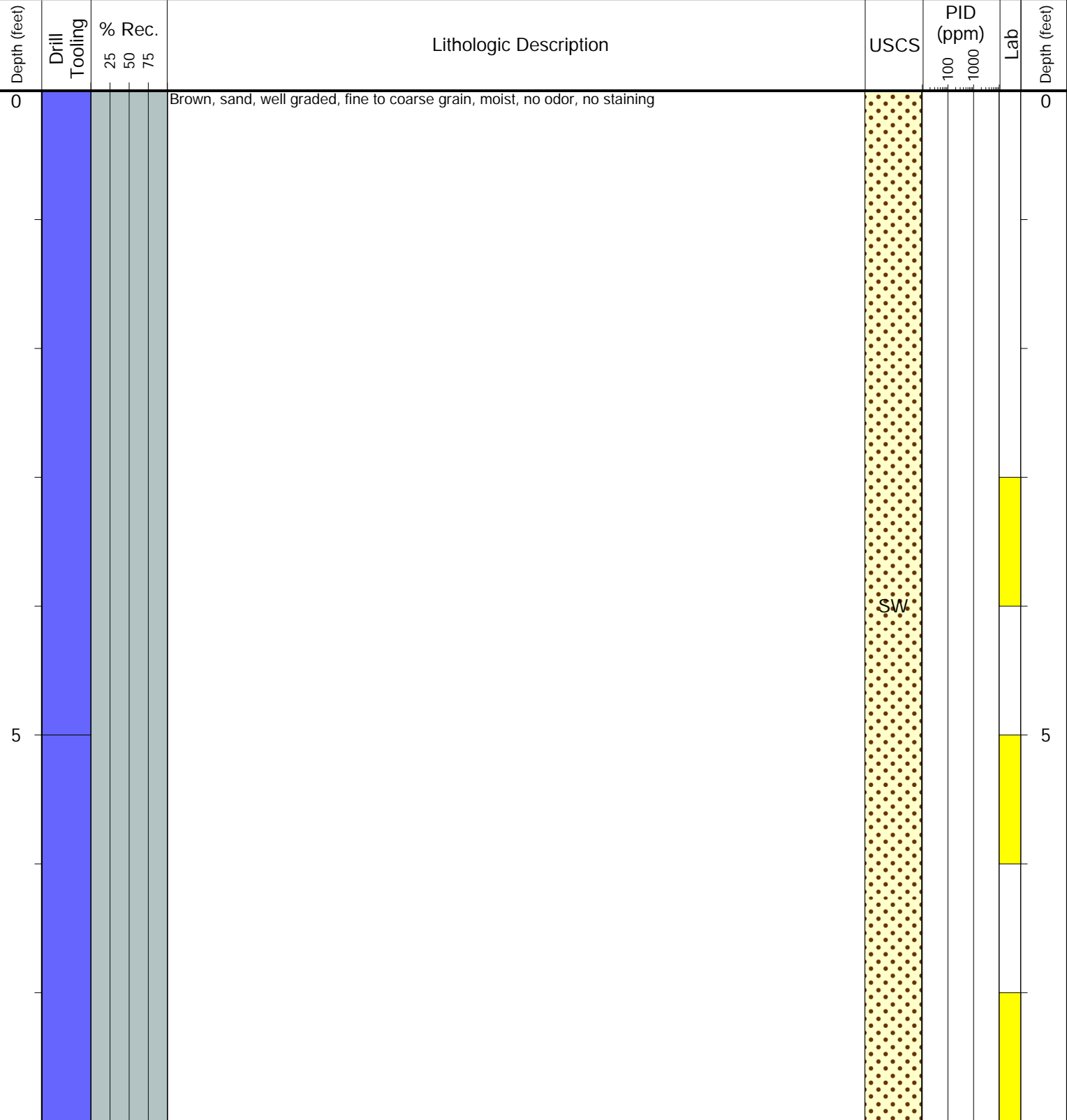
- Geotechnical Lab
- Analytical Chemistry Lab
- Geotechnical & Analytical Chemistry Lab



CLIENT: Noble
LOGGED BY: Billy Morrow
PROJECT MANAGER: Andy Sagen
DRILLING CONTRACTOR: Tasman
DRILLING EQUIPMENT: Hand Auger
DRILL BIT SIZE (INCHES): 3.25
DATE STARTED - COMPLETED: 5/5/2025 - 5/5/2025
TOTAL WELL DEPTH (FT. BGS): 8
DEPTH TO WATER (FT. BGS): Not Encountered ▼

Frico 37-15
BORING ID: BH08
LOCATION: E of BH06
LATITUDE (NAD 83): 40.222675
LONGITUDE (NAD 83): -104.657568
GROUND ELEVATION (FT. AMSL): Not Measured
ABANDONMENT METHOD: Native Material

4725 Independence St.
Wheat Ridge, CO 80033



Drilling / Sample Method:

- Macro-Core
- Hand Auger
- Expendable Well Tip
- HydroPunch Groundwater Sampler

Laboratory Sample Types:

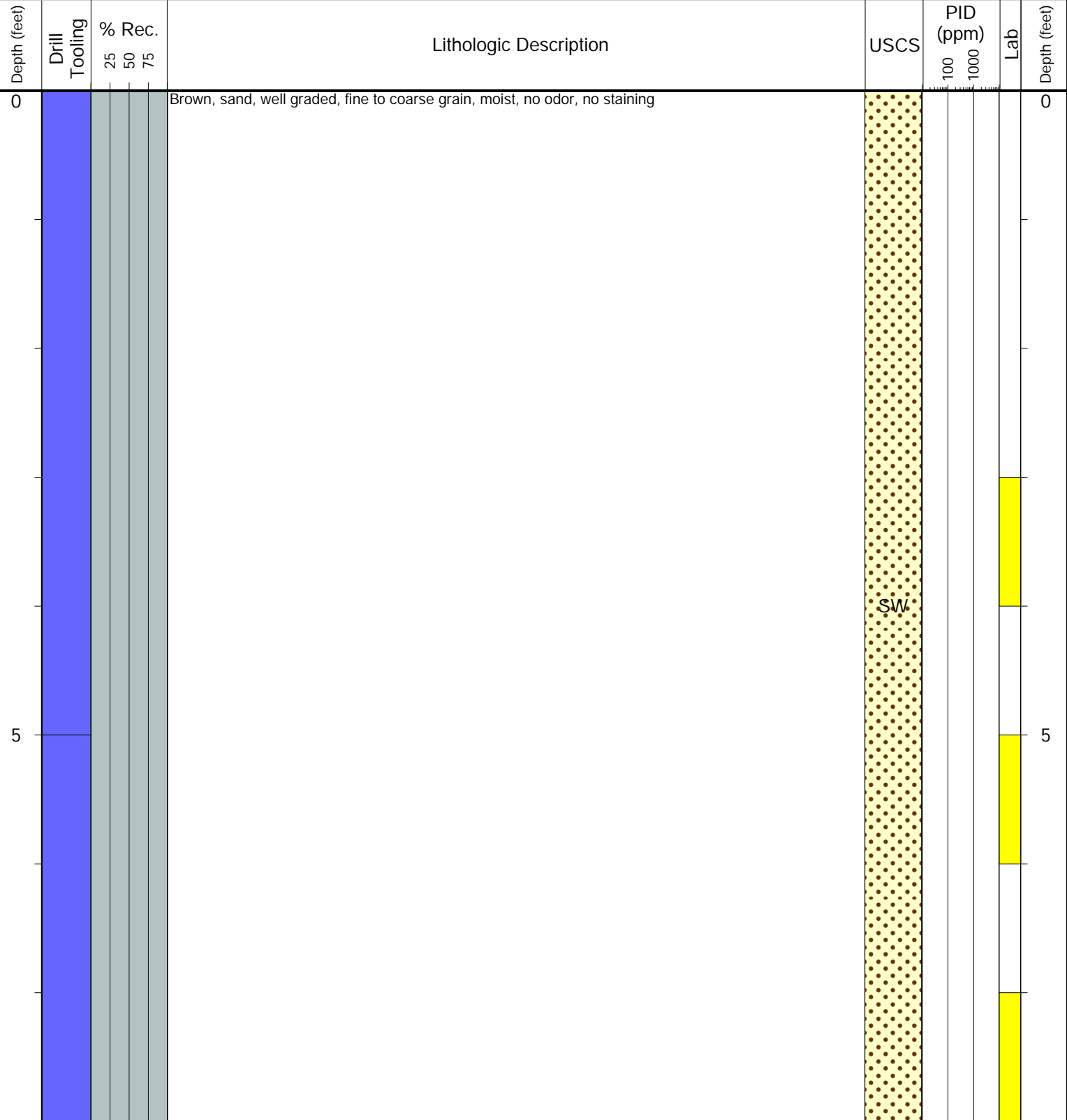
- Geotechnical Lab
- Analytical Chemistry Lab
- Geotechnical & Analytical Chemistry Lab



CLIENT: Noble
LOGGED BY: Billy Morrow
PROJECT MANAGER: Andy Sagen
DRILLING CONTRACTOR: Tasman
DRILLING EQUIPMENT: Hand Auger
DRILL BIT SIZE (INCHES): 3.25
DATE STARTED - COMPLETED: 5/5/2025 - 5/5/2025
TOTAL WELL DEPTH (FT. BGS): 8
DEPTH TO WATER (FT. BGS): Not Encountered ▼

Frico 37-15
BORING ID: BH09
LOCATION: S of BH06
LATITUDE (NAD 83): 40.222634
LONGITUDE (NAD 83): -104.657618
GROUND ELEVATION (FT. AMSL): Not Measured
ABANDONMENT METHOD: Native Material

4725 Independence St.
Wheat Ridge, CO 80033



Drilling / Sample Method:

- Macro-Core
- Hand Auger
- Expendable Well Tip
- HydroPunch Groundwater Sampler

Laboratory Sample Types:

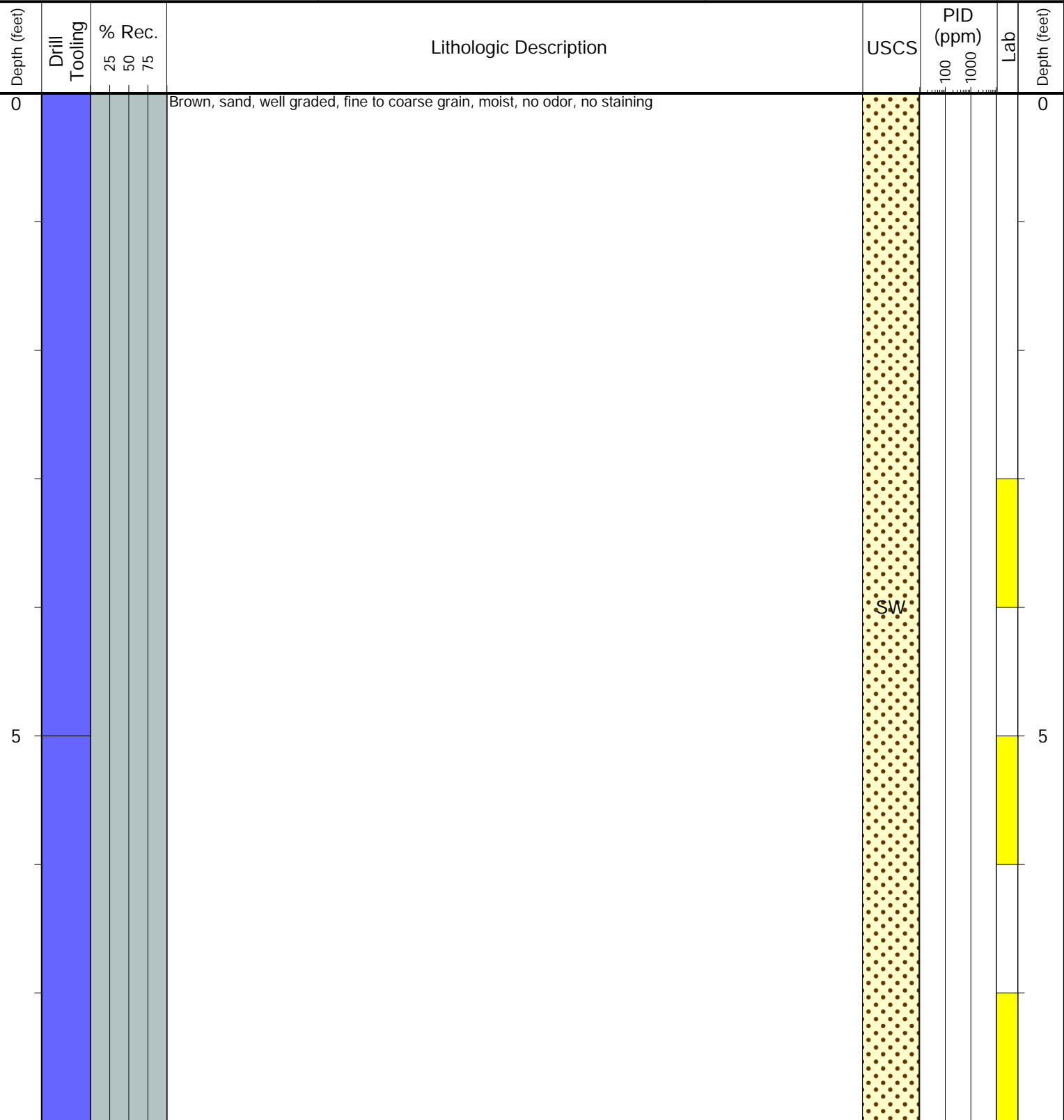
- Geotechnical Lab
- Analytical Chemistry Lab
- Geotechnical & Analytical Chemistry Lab



CLIENT: Noble
LOGGED BY: Billy Morrow
PROJECT MANAGER: Andy Sagen
DRILLING CONTRACTOR: Tasman
DRILLING EQUIPMENT: Hand Auger
DRILL BIT SIZE (INCHES): 3.25
DATE STARTED - COMPLETED: 5/13/2025 - 5/13/2025
TOTAL WELL DEPTH (FT. BGS): 8
DEPTH TO WATER (FT. BGS): Not Encountered ▼

Frico 37-15
BORING ID: BH10
LOCATION: W of BH06
LATITUDE (NAD 83): 40.222675
LONGITUDE (NAD 83): -104.657669
GROUND ELEVATION (FT. AMSL): Not Measured
ABANDONMENT METHOD: Native Material

4725 Independence St.
Wheat Ridge, CO 80033



Drilling / Sample Method:

- Macro-Core
- Hand Auger
- Expendable Well Tip
- HydroPunch Groundwater Sampler

Laboratory Sample Types:

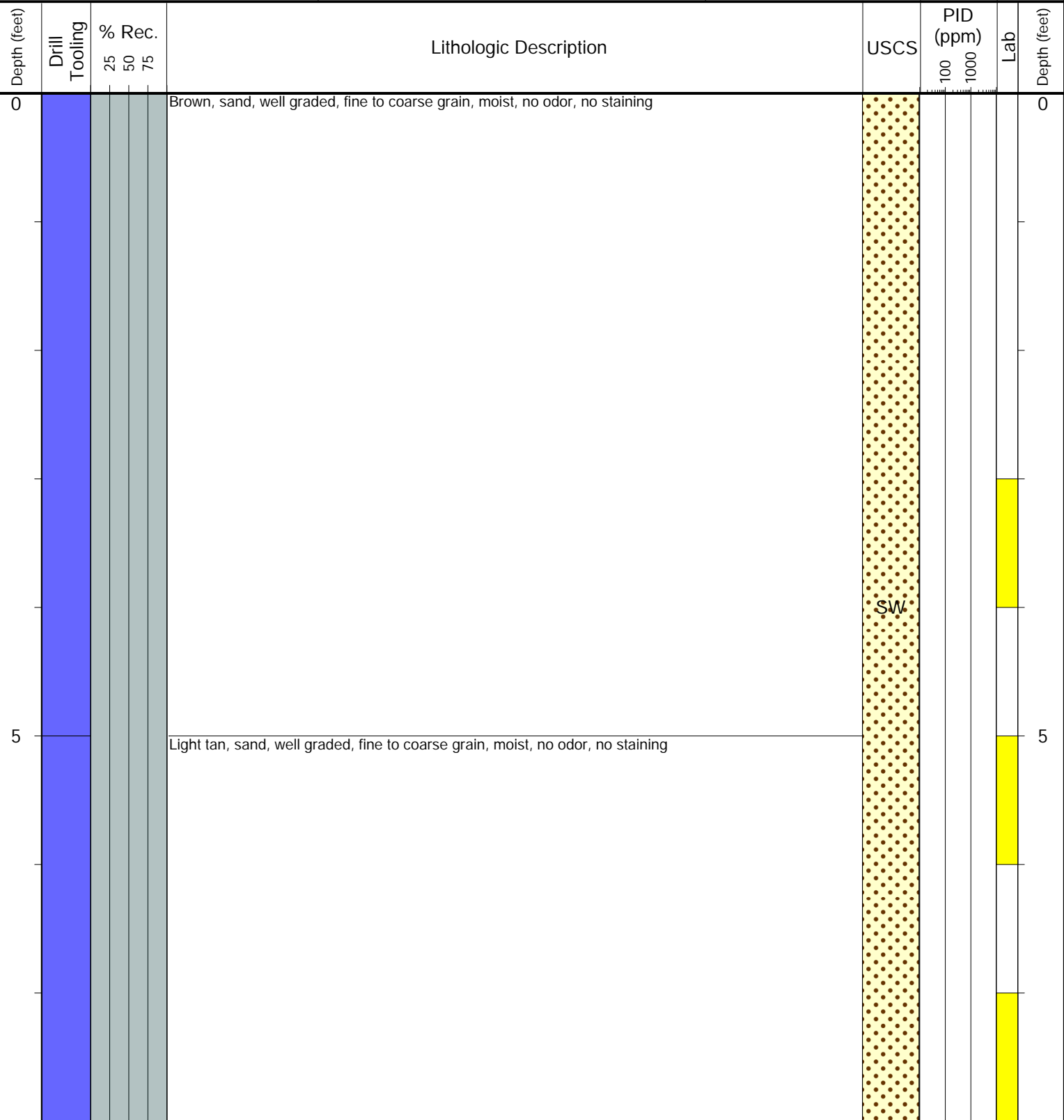
- Geotechnical Lab
- Analytical Chemistry Lab
- Geotechnical & Analytical Chemistry Lab



CLIENT: Noble
LOGGED BY: Billy Morrow
PROJECT MANAGER: Andy Sagen
DRILLING CONTRACTOR: Tasman
DRILLING EQUIPMENT: Hand Auger
DRILL BIT SIZE (INCHES): 3.25
DATE STARTED - COMPLETED: 5/13/2025 - 5/13/2025
TOTAL WELL DEPTH (FT. BGS): 8
DEPTH TO WATER (FT. BGS): Not Encountered ▼

Frico 37-15
BORING ID: BH13
LOCATION: E of BH11
LATITUDE (NAD 83): 40.223046
LONGITUDE (NAD 83): -104.657631
GROUND ELEVATION (FT. AMSL): Not Measured
ABANDONMENT METHOD: Native Material

4725 Independence St.
 Wheat Ridge, CO 80033



Drilling / Sample Method:

- Macro-Core
- Hand Auger
- Expendable Well Tip
- HydroPunch Groundwater Sampler

Laboratory Sample Types:

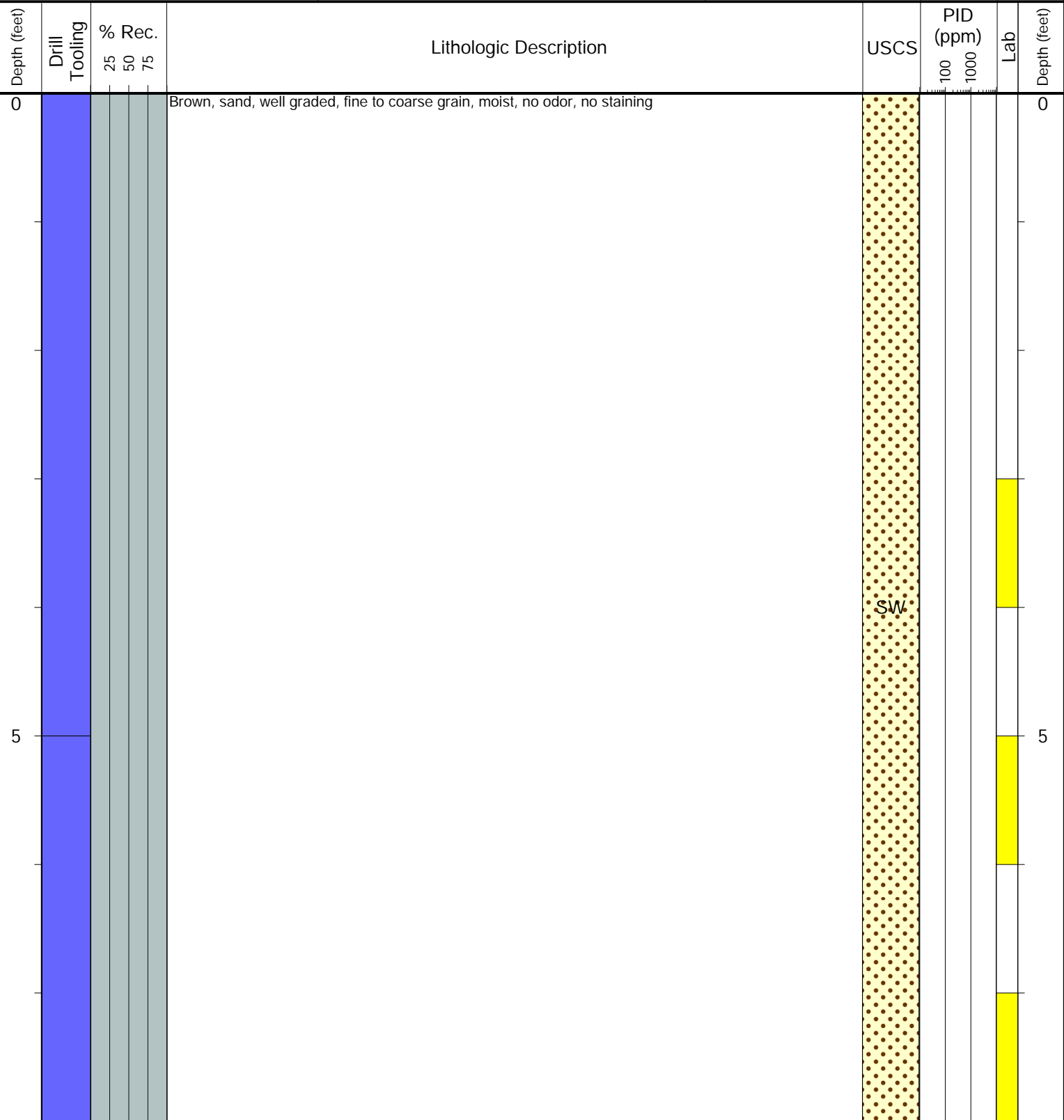
- Geotechnical Lab
- Analytical Chemistry Lab
- Geotechnical & Analytical Chemistry Lab



CLIENT: Noble
LOGGED BY: Billy Morrow
PROJECT MANAGER: Andy Sagen
DRILLING CONTRACTOR: Tasman
DRILLING EQUIPMENT: Hand Auger
DRILL BIT SIZE (INCHES): 3.25
DATE STARTED - COMPLETED: 5/13/2025 - 5/13/2025
TOTAL WELL DEPTH (FT. BGS): 8
DEPTH TO WATER (FT. BGS): Not Encountered ▼

Frico 37-15
BORING ID: BH14
LOCATION: S of BH11
LATITUDE (NAD 83): 40.223005
LONGITUDE (NAD 83): -104.657682
GROUND ELEVATION (FT. AMSL): Not Measured
ABANDONMENT METHOD: Native Material

4725 Independence St.
Wheat Ridge, CO 80033



Drilling / Sample Method:

- Macro-Core
- Hand Auger
- Expendable Well Tip
- HydroPunch Groundwater Sampler

Laboratory Sample Types:

- Geotechnical Lab
- Analytical Chemistry Lab
- Geotechnical & Analytical Chemistry Lab