

Legend

 Site Location

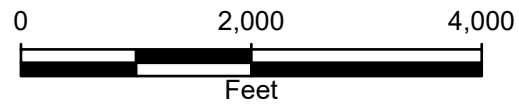
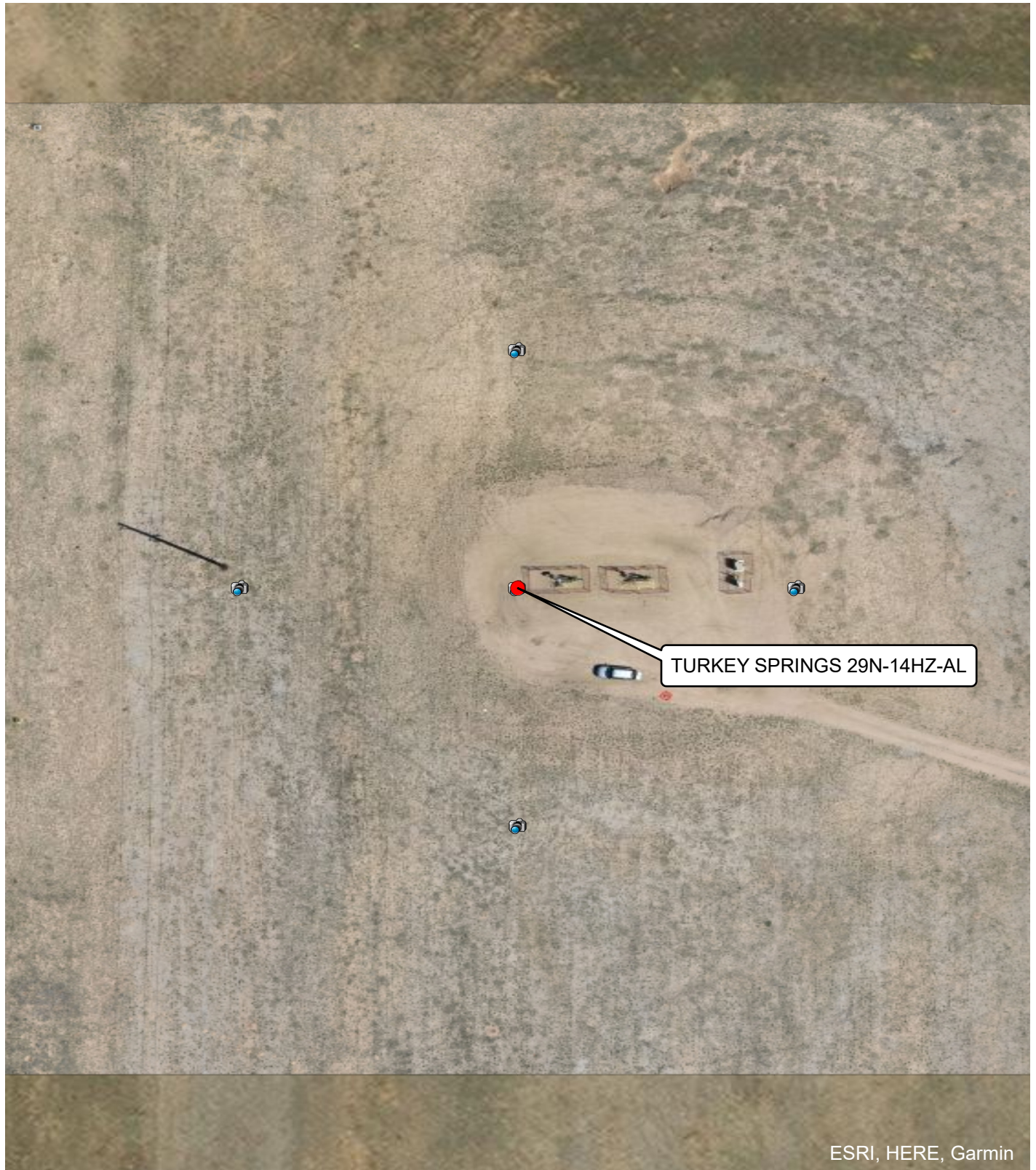


FIGURE 1
SITE LOCATION MAP
TURKEY SPRINGS 29N-14HZ-AL
NWNE SEC 23-T2N-R66W
WELD, COLORADO





ESRI, HERE, Garmin

Legend

- Plugged and Abandoned Well
- 📷 Cardinal Direction Photo Locations
- Cardinal Direction Photos Taken 150' from Well

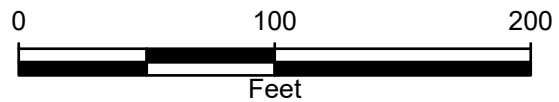


FIGURE 2
SITE MAP
TURKEY SPRINGS 29N-14HZ-AL
NWNE SEC 23-T2N-R66W
WELD, COLORADO



FIGURE 3: PHOTOGRAPHIC LOG



Photograph 1: View facing north as required in Energy and Carbon Management Commission (ECMC) Rule 1004.
Photo Taken from GPS 40.128553, -104.742893



Photograph 2: View facing east as required in Energy and Carbon Management Commission (ECMC) Rule 1004.
Photo Taken from GPS 40.128903, -104.743302



FIGURE 3: PHOTOGRAPHIC LOG



Photograph 3: View facing south as required in Energy and Carbon Management Commission (ECMC) Rule 1004.
Photo Taken from GPS 40.129253, -104.742895



Photograph 4: View facing west as required in Energy and Carbon Management Commission (ECMC) Rule 1004.
Photo Taken from GPS 40.128903, -104.742484



Attachments: Historic Imagery



Imagery Date: June 2, 2014



Imagery Date: October 9, 2015

Site Name: Turkey Springs 29N-14HZ AL
Imagery Source: Google Earth



Attachments: Historic Imagery



Imagery Date: September 4, 2023

Site Name: Turkey Springs 29N-14HZ AL
Imagery Source: Google Earth

