

Legend

○ Site Location

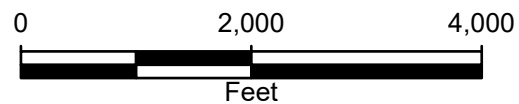


FIGURE 1
SITE LOCATION MAP
TURKEY SPRINGS 4N-14HZ-AL
NENE SEC 22-T2N-R66W
WELD, COLORADO





ESRI, HERE, Garmin

Legend

- Plugged and Abandoned Well
- 📷 Cardinal Direction Photo Locations
- Cardinal Direction Photos Taken 150' from Well

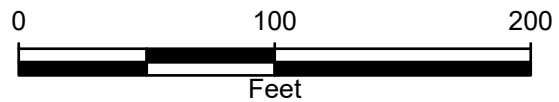


FIGURE 2
SITE MAP
TURKEY SPRINGS 4N-14HZ-AL
NENE SEC 22-T2N-R66W
WELD, COLORADO



FIGURE 3: PHOTOGRAPHIC LOG



Photograph 1: View facing north as required in Energy and Carbon Management Commission (ECMC) Rule 1004.
Photo Taken from GPS 40.128179, -104.754904



Photograph 2: View facing east as required in Energy and Carbon Management Commission (ECMC) Rule 1004.
Photo Taken from GPS 40.128530, -104.755313



FIGURE 3: PHOTOGRAPHIC LOG

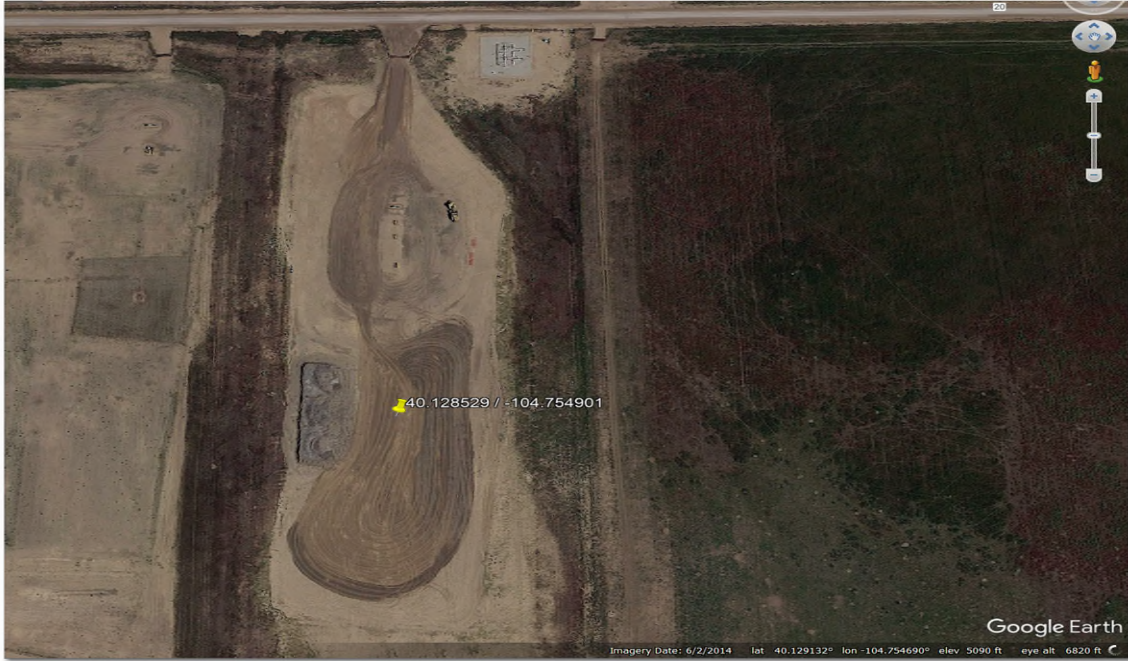


Photograph 3: View facing south as required in Energy and Carbon Management Commission (ECMC) Rule 1004.
Photo Taken from GPS 40.128878, -104.754905

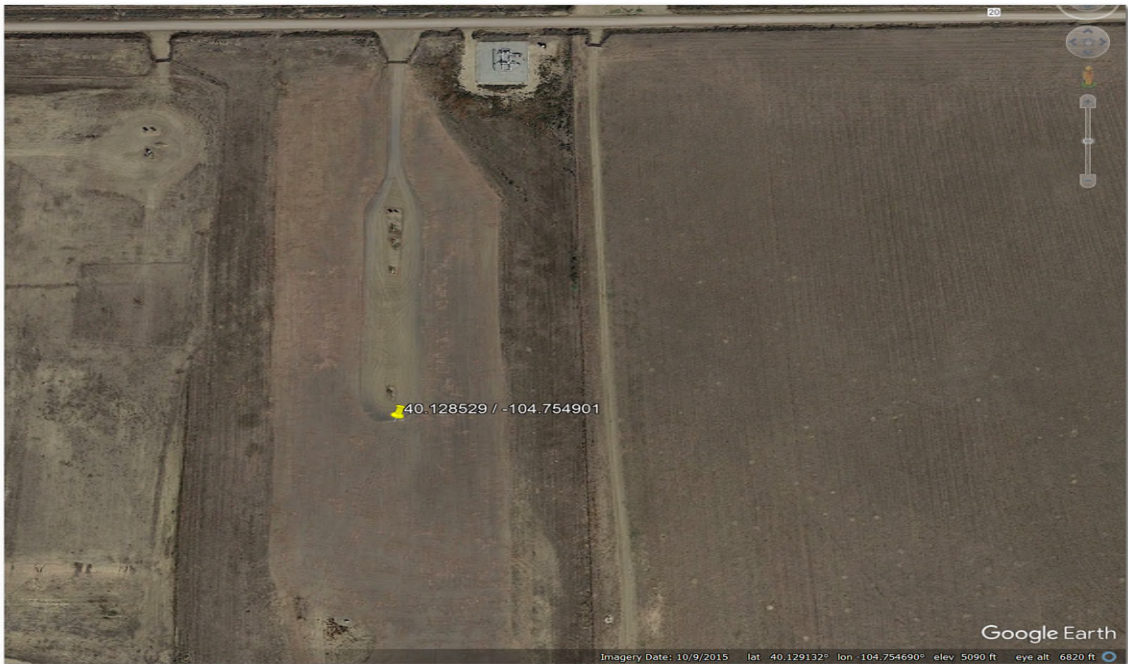


Photograph 4: View facing west as required in Energy and Carbon Management Commission (ECMC) Rule 1004.
Photo Taken from GPS 40.128530, -104.754491

Attachments: Historic Imagery



Imagery Date: June 2, 2014

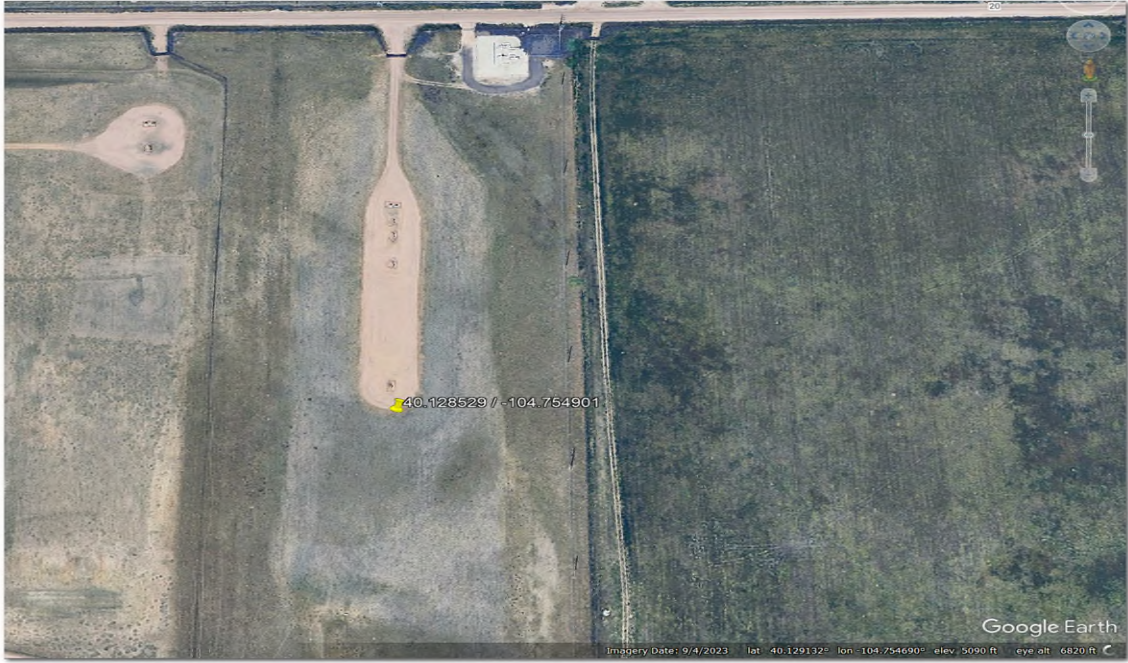


Imagery Date: October 9, 2015

Site Name: Turkey Springs 4N-14HZ AL
Imagery Source: Google Earth



Attachments: Historic Imagery



Imagery Date: September 4, 2023

Site Name: Turkey Springs 4N-14HZ AL
Imagery Source: Google Earth

