

W Wall - 2Ft		W Wall - 2Ft	
3/24/2025		3/24/2025	
2Ft		2Ft	
As	2.82	pH	7.00
BA	70.6	EC	0.483
CD	<1.00	SAR	3.12
CR(VI)	<1.00	B	<0.200
CU	10.7		
PB	11.7		
NI	10.7		
SE	<2.50		
AG	<0.500		
Z	41.0		

FL01-2FT		FL01-2FT	
06/07/2024		06/07/2024	
2Ft		2Ft	
As	1.81	pH	8.69
BA	62.4	EC	0.380
CD	<0.200	SAR	1.78
CR(VI)	<0.30	B	<2.00
CU	5.92		
PB	6.78		
NI	4.31		
SE	<0.280		
AG	0.0553		
Z	21.4		

N Wall - 2Ft		N Wall - 2Ft	
3/24/2025		3/24/2025	
2Ft		2Ft	
As	2.63	pH	7.02
BA	58.6	EC	0.351
CD	<1.00	SAR	2.28
CR(VI)	<1.00	B	0.224
CU	10.8		
PB	11.0		
NI	9.24		
SE	<2.50		
AG	<0.500		
Z	37.1		

E Wall - 2Ft		E Wall - 2Ft	
3/24/2025		3/24/2025	
2Ft		2Ft	
As	3.19	pH	7.22
BA	73.7	EC	0.533
CD	<1.00	SAR	2.43
CR(VI)	<1.00	B	0.268
CU	15.0		
PB	15.5		
NI	10.6		
SE	<2.50		
AG	<0.500		
Z	54.2		

FLOOR - 3Ft		FLOOR - 3Ft	
3/24/2025		3/24/2025	
3Ft		3Ft	
As	3.75	pH	6.89
BA	104	EC	0.521
CD	<1.00	SAR	2.32
CR(VI)	<1.00	B	<0.200
CU	8.72		
PB	8.83		
NI	7.15		
SE	<2.50		
AG	<0.500		
Z	35.6		

S Wall - 2Ft		S Wall - 2Ft	
3/24/2025		3/24/2025	
2Ft		2Ft	
As	3.72	pH	7.27
BA	74.3	EC	0.288
CD	<1.00	SAR	1.83
CR(VI)	<1.00	B	<0.200
CU	14.1		
PB	16.0		
NI	27.8		
SE	<2.50		
AG	<0.500		
Z	48.8		

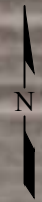
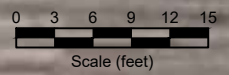
- LEGEND**
- ▲ DECOM PID READING LOCATION
  - ▲ EXCAVATION PID READING LOCATION
  - ⊗ DECOM SOIL SAMPLE LOCATION
  - ⊗ EXCAVATION SOIL SAMPLE LOCATION
  - FORMER FACILITY
  - EXCAVATED AREA
  - ABANDONED IN PLACE FLOW LINE
  - FORMER FLOW LINE
  - EXTENT OF EXCAVATION
  - FENCE LINE

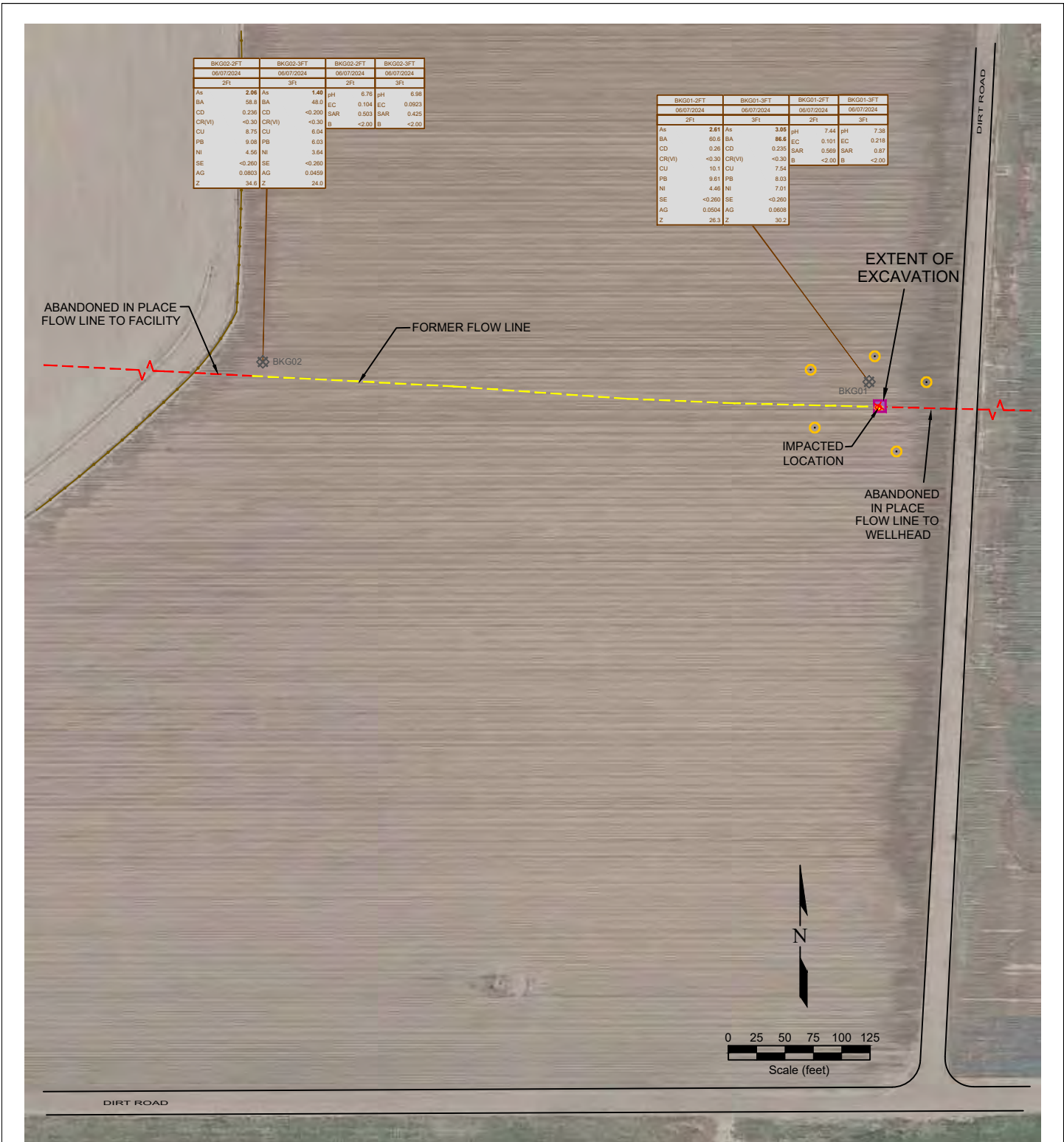
SAMPLE	SAMPLE ID	SAMPLE	SAMPLE ID		
DATE	DATE SAMPLED	DATE	DATE SAMPLED		
DEPTH	DEPTH (ft)	DEPTH	DEPTH (ft)		
As	<0.01	ARSENIC (mg/kg)	pH	<0.01	pH (pH units)
BA	<0.01	BARIUM (mg/kg)	EC	7.00	EC (microhm/cm)
CD	<0.01	CADMIUM (mg/kg)	SAR	<1	SAR (unitless)
CR(VI)	<0.01	CHROMIUM (mg/kg)	B	<0.01	BORON (mg/L)
CU	<0.01	COPPER (mg/kg)			
PB	<0.01	LEAD (mg/kg)			
NI	<0.01	NICKEL (mg/kg)			
SE	<0.01	SELENIUM (mg/kg)			
AG	<0.01	SILVER (mg/kg)			
Z	<0.01	ZINC (mg/kg)			

Figure 1  
**PROPOSED SITE INVESTIGATION PLAN**

**Noble Energy, Inc. ~ Kerbs K20-06**  
 SENW Sec. 20, T4N, R66W, 6th PM  
 Weld County, Colorado  
 40.298960°, -104.804510°

Project No. <b>CO24-125</b>	API # <b>05-123-20597</b>	Facility #
Date <b>7/17/25</b>	Remediation # <b>23578</b>	Filename <b>24125QE1</b>





**LEGEND**

- IMPACTED LOCATION
- SOIL SAMPLE LOCATION
- FORMER FACILITY
- EXCAVATED AREA
- ABANDONED IN PLACE FLOW LINE
- FORMER FLOW LINE
- EXTENT OF EXCAVATION
- FENCE LINE

SAMPLE	SAMPLE ID	SAMPLE	SAMPLE ID		
DATE	DATE SAMPLED	DATE	DATE SAMPLED		
DEPTH	DEPTH (ft)	DEPTH	DEPTH (ft)		
As	<0.07	ARSENIC (mg/kg)	pH	<50	pH (pH units)
BA	<0.01	BARIUM (mg/kg)	EC	7.00	EC (micromhos/cm)
CD	<0.01	CADMIUM (mg/kg)	SAR	<1	SAR (units)
CR(V)	<0.05	CHROMIUM (mg/kg)	B	<25	BORON (mg/L)
CU	<0.01	COPPER (mg/kg)			
PB	<0.05	LEAD (mg/kg)			
NI	<0.05	NICKEL (mg/kg)			
SE	<0.5	SELENIUM (mg/kg)			
AG	<0.05	SILVER (mg/kg)			
Z	<0.05	ZINC (mg/kg)			

Figure 2  
**PROPOSED ADDITIONAL BACKGROUND SAMPLE LOCATIONS**

**Noble Energy, Inc. ~ Kerbs K20-06**  
 SENW Sec. 20, T4N, R66W, 6th PM  
 Weld County, Colorado  
 40.298960° , -104.804510°

Project No. <b>CO24-125</b>	API # <b>05-123-20597</b>	Facility #
Date <b>7/17/25</b>	Remediation # <b>23578</b>	Filename <b>24125QE</b>

