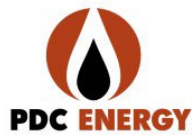


DECOMMISSIONING REPORT
SCHMERGE 44-4 FLOWLINE
ECMC REMEDIATION # 38713

Prepared for:

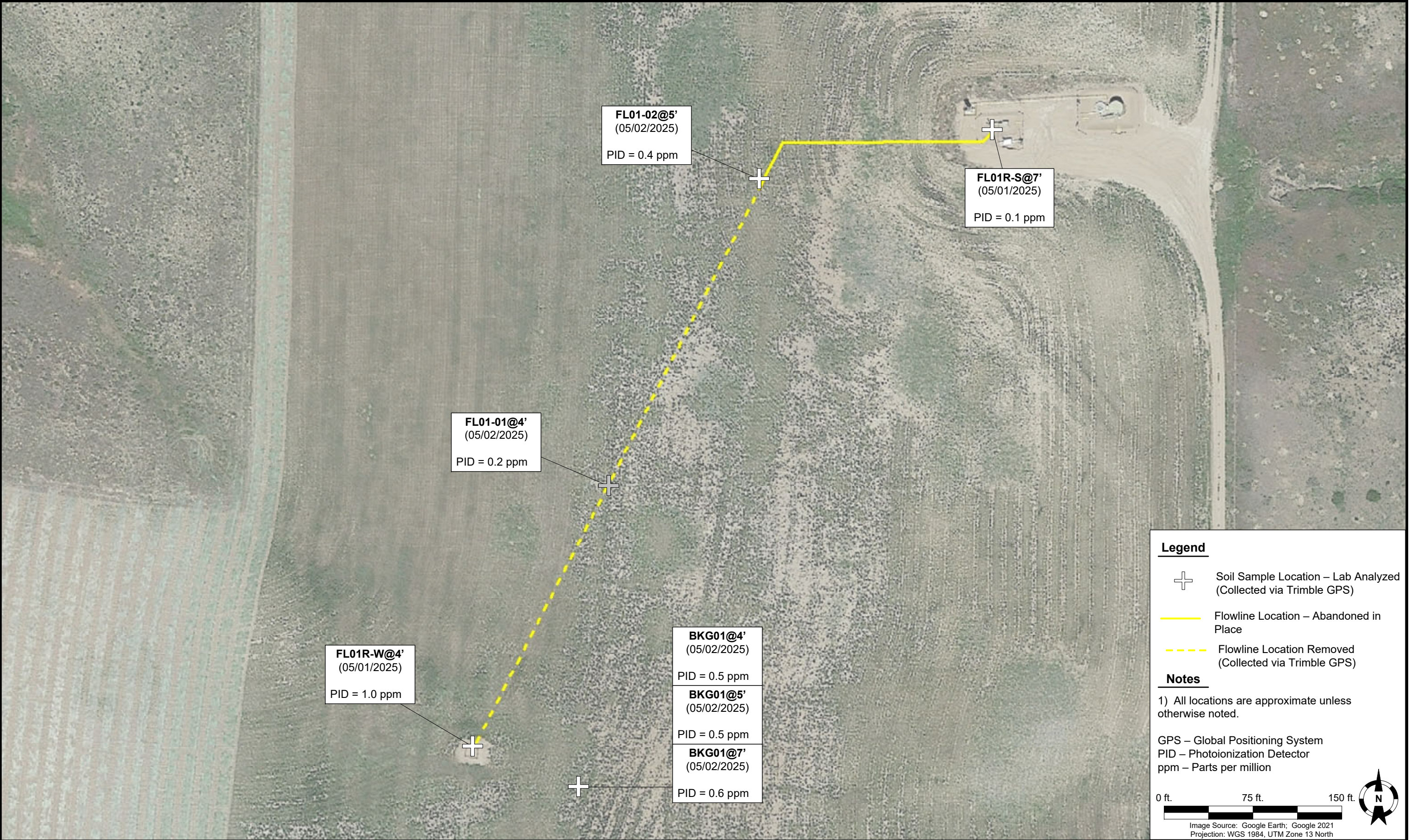


1099 18th Street
Suite 1500
Denver, CO 80202

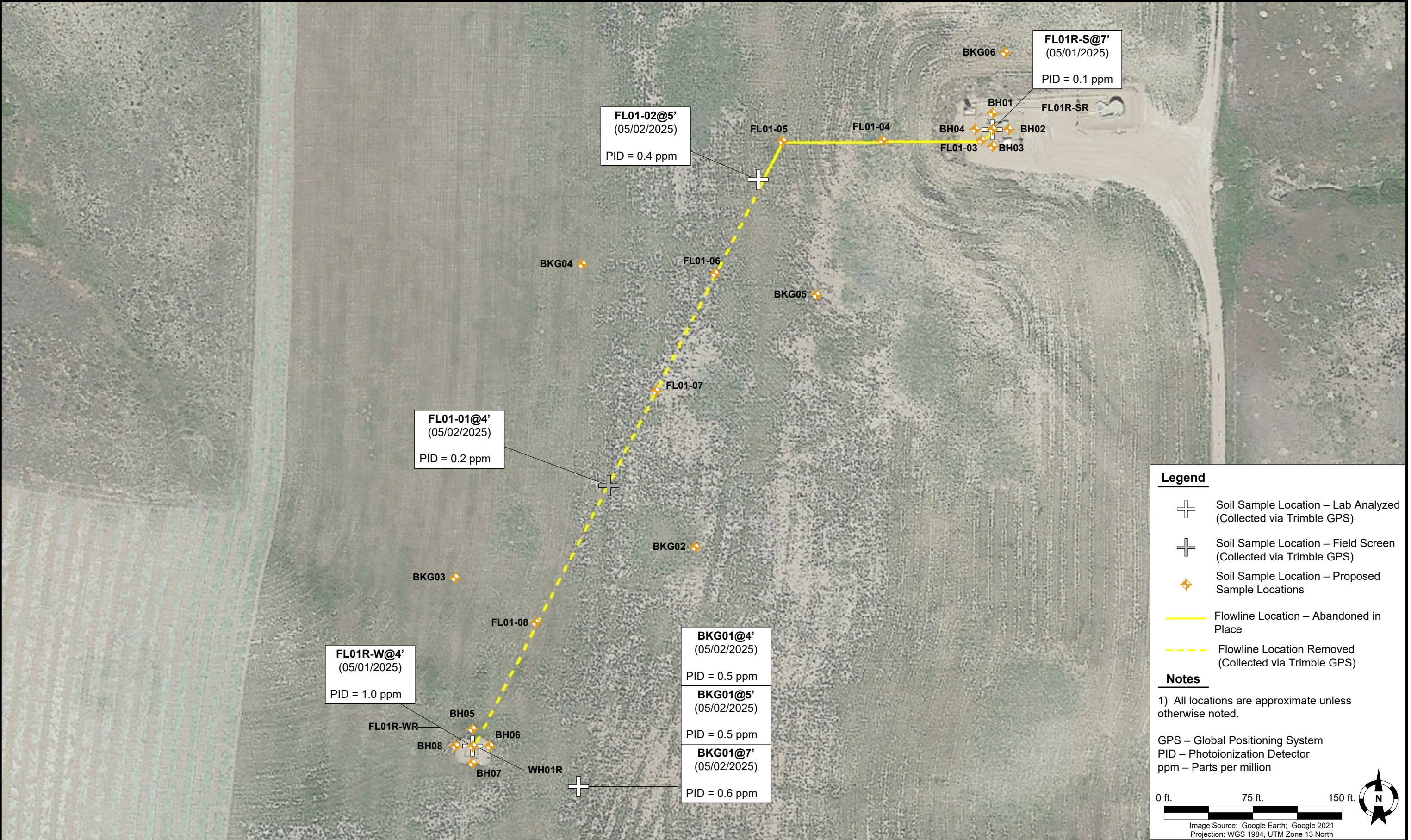
Prepared by:



4725 Independence Street
Wheat Ridge, CO 80033



DATE: June 4, 2025	 <div>Tasman, Inc. 4725 Independence Street Wheat Ridge, CO 80033</div>	PDC Energy, Inc. – 69175 – DJ Basin Schmerge 44-4 Wellhead and Flowline SESE, Section 4, Township 5 North, Range 67 West Weld County, Colorado	SOIL SAMPLE LOCATION MAP (FLOWLINE)	FIGURE 1
DESIGNED BY: A. Sagen				
DRAWN BY: D. Erwin				



DATE:	July 14, 2025	 <div>Tasman, Inc. 4725 Independence Street Wheat Ridge, CO 80033</div>	PDC Energy, Inc. – 69175 – DJ Basin Schmerge 44-4 Wellhead and Flowline SESE, Section 4, Township 5 North, Range 67 West Weld County, Colorado	PROPOSED SAMPLE LOCATION MAP	FIGURE 2
DESIGNED BY:	A. Sagen				
DRAWN BY:	B. Ulrich				

TABLE 1
FIELD DATA SUMMARY TABLE
PDC ENERGY, INC. - 69175
SCHMERGE 44-4 FLOWLINE, WELD COUNTY, COLORADO
REM # 38713



Sample ID	Sample Date	Depth (ft. bgs)	GPS Data ¹ Latitude/Longitude		PDOP Value	VOC Concentration ² (ppm)
FL01R-W@4'	05/01/2025	4	40.423178	-104.890420	0.8	1.0
FL01R-S@7'	05/01/2025	7	40.424605	-104.888845	0.8	0.1
FL01-01@4'	05/02/2025	4	40.423779	-104.890011	0.9	0.2
FL01-02@5'	05/02/2025	5	40.424493	-104.889555	1.0	0.4
BKG01@4'	05/02/2025	4	40.423085	-104.890105	0.8	0.5
BKG01@5'	05/02/2025	5	40.423085	-104.890105	0.8	0.5
BKG01@7'	05/02/2025	7	40.423085	-104.890105	0.8	0.6

Notes:

1. Global Positioning System (GPS) data is provided in decimal degrees using North American Datum (NAD) 83 UTM Zone 13 North.

2. Volatile organic compound (VOC) concentrations are measured in the field using a photoionization detector (PID).

PDOP = Position Dilution of Precision

ppm = Parts per million

ft. = Feet

bgs = Below ground surface

NC = Not collected

NA = Not analyzed

Source material characterization sample, excavated and transported off site for disposal.

Material excavated and transported off site for disposal.

TABLE 2
SUMMARY OF VOLATILE ORGANIC SOIL CHEMISTRY DATA
PDC ENERGY, INC. - 69175
SCHMERGE 44-4 FLOWLINE , WELD COUNTY, COLORADO
REM # 38713



Sample ID	Sample Date	Depth (ft. bgs)	Benzene (mg/kg)	Toluene (mg/kg)	Ethyl-Benzene (mg/kg)	Xylenes (mg/kg)	1,2,4- Trimethyl- Benzene (mg/kg)	1,3,5- Trimethyl- Benzene (mg/kg)	Naphthalene (mg/kg)	TPH (mg/kg)	TPH GRO (mg/kg)	TPH DRO (mg/kg)	TPH ORO (mg/kg)
ECMC Table 915-1 Limits (Residential SSL)			1.2	490	5.8	58	30	27	2	500	500**		
ECMC Table 915-1 Limits (Protection of Groundwater SSL)			0.0026	0.69	0.78	9.9	0.0081	0.0087	0.0038	500	500**		
FL01R-W@4'	05/01/2025	4	<0.0011	<0.0023	<0.0023	<0.0023	<0.0023	<0.0023	<0.0029	<6.5	<0.23	<4.4	<6.5
FL01R-S@7'	05/01/2025	7	<0.0011	<0.0022	<0.0022	<0.0022	<0.0022	<0.0022	<0.0028	<6.3	<0.22	<4.2	<6.3
FL01-02@5'	05/02/2025	5	<0.0011	<0.0021	<0.0021	<0.0021	<0.0021	<0.0021	0.0018 J	9.88	<0.21	<3.9	9.88

Notes:

1. **Bold** values exceed the ECMC Table 915-1 limit(s).
2. Red & blue highlighted soil analytical values indicate an exceedance of the referenced soil screening level (SSL).
3. ** Summation of GRO+DRO+ORO must be less than 500 mg/kg.

ECMC = Energy and Carbon Management Commission

(<) = Analytical result is less than the indicated laboratory reporting limit.

TPH-GRO = Total petroleum hydrocarbons - gasoline range organics

TPH-DRO = Total petroleum hydrocarbons - diesel range organics

TPH-ORO = Total petroleum hydrocarbons - oil range organics

mg/kg = Milligrams per kilogram

ft. = Feet

bgs = Below ground surface

NA = Not analyzed

Source material characterization sample, excavated and transported off site for disposal.

Material excavated and transported off site for disposal.

J = Indicates an estimated value

TABLE 3
SUMMARY OF POLYCYCLIC AROMATIC HYDROCARBON SOIL CHEMISTRY DATA
PDC ENERGY, INC. - 69175
SCHMERGE 44-4 FLOWLINE, WELD COUNTY, COLORADO
REM # 38713



Sample ID	Sample Date	Depth (ft. bgs)	Acenaphthene (mg/kg)	Anthracene (mg/kg)	Benzo (a) Anthracene (mg/kg)	Benzo (a) Pyrene (mg/kg)	Benzo (b) Fluoranthene (mg/kg)	Benzo (k) Fluoranthene (mg/kg)	Chrysene (mg/kg)	Dibenzo (a,h) Anthracene (mg/kg)	Fluoranthene (mg/kg)	Fluorene (mg/kg)	Indeno (1,2,3- cd) Pyrene (mg/kg)	Pyrene (mg/kg)	1-Methyl - Naphthalene (mg/kg)	2-Methyl- Naphthalene (mg/kg)
ECMC Table 915-1 Limits (Residential SSL)			360	1800	1.1	0.11	1.1	11	110	0.11	240	240	1.1	180	18	24
ECMC Table 915-1 Limits (Protection of Groundwater SSL)			0.55	5.8	0.011	0.24	0.3	2.9	9	0.096	8.9	0.54	0.98	1.3	0.006	0.019
FL01R-W@4'	05/01/2025	4	<0.0029	<0.0029	0.0014 J	<0.014	<0.014	<0.014	0.00086 J	<0.014	0.0019 J	<0.0029	<0.014	0.0018 J	<0.0029	<0.0029
FL01R-S@7'	05/01/2025	7	<0.0028	<0.0028	<0.0028	<0.014	<0.014	<0.014	<0.0028	<0.014	<0.0028	<0.0028	<0.014	<0.0028	<0.0028	<0.0028
FL01-02@5'	05/02/2025	5	<0.0043	<0.0043	0.0036 J	<0.043	<0.043	<0.043	0.0041 J	<0.043	0.0016 J	<0.0043	<0.043	0.0020 J	<0.0043	<0.0043

Notes:

1. **Bold** values exceed the ECMC Table 915-1 limit(s).
2. Red & blue highlighted soil analytical values indicate an exceedance of the referenced soil screening level (SSL).
3. * Indicates laboratory minimum detection limit in excess of SSL.

ECMC = Energy and Carbon Management Commission

(<) = Analytical result is less than the indicated laboratory reporting limit.

mg/kg = Milligrams per kilogram

ft. = Feet

bgs = Below ground surface

NA = Not analyzed

Source material characterization sample, excavated and transported off site for disposal.

Material excavated and transported off site for disposal.

J = Indicates an estimated value

TABLE 4
SUMMARY OF SOIL SUITABILITY FOR RECLAMATION
PDC ENERGY, INC. - 69175
SCHMERGE 44-4 FLOWLINE, WELD COUNTY, COLORADO
REM # 38713



Sample ID	Sample Date	Depth (ft. bgs)	pH (Standard Units)	EC (mmhos/cm)	SAR (Standard Units)	Boron (mg/L)
ECMC Table 915-1 Soil Suitability Limits			6 - 8.3	<4	<6	2
FL01R-W@4'	05/01/2025	4	7.69	0.63	1.32	<0.50
FL01R-S@7'	05/01/2025	7	8.00	0.26	0.595	<0.50
FL01-02@5'	05/02/2025	5	7.94	0.52	1.28	<0.50
BKG01@4'	05/02/2025	4	8.16	0.40	1.02	<0.50
BKG01@5'	05/02/2025	5	7.99	0.33	1.16	<0.50
BKG01@7'	05/02/2025	7	7.77	1.4	1.28	<0.50
Maximum Background Concentration			-	-	-	-

Notes:

1. **Bold** faced values exceed the ECMC Table 915-1 limit(s), but are within background concentrations.
2. **Bold** faced values exceed the ECMC Table 915-1 limit(s) and native background concentrations.
3. Brown highlighted soil analytical values indicate a regulatory exceedance.

ECMC = Energy and Carbon Management Commission

(<) = Analytical result is less than the indicated laboratory reporting limit.

mg/L = Milligrams per liter

ft. = Feet

bgs = Below ground surface

EC = Electrical conductivity

SAR = Sodium adsorption ratio

mmhos/cm = Millimohs per centimeter

Source material characterization sample, excavated and transported off site for disposal.

Material excavated and transported off site for disposal.

TABLE 5
SUMMARY OF METALS IN SOIL CHEMISTRY DATA
PDC ENERGY, INC. - 69175
SCHMERGE 44-4 FLOWLINE, WELD COUNTY, COLORADO
REM # 38713



Sample ID	Sample Date	Depth (ft. bgs)	Arsenic (mg/kg)	Barium (mg/kg)	Cadmium (mg/kg)	Chromium (VI) ⁶ (mg/kg)	Copper (mg/kg)	Lead (mg/kg)	Nickel (mg/kg)	Selenium (mg/kg)	Silver (mg/kg)	Zinc (mg/kg)
ECMC Table 915-1 Limits (Residential SSL)			0.68	15000	71	0.3	3100	400	1500	390	390	23000
ECMC Table 915-1 Limits (Protection of Groundwater SSL)			0.29	82	0.38	0.00067	46	14	26	0.26	0.8	370
FL01R-W@4'	05/01/2025	4	6.7	237	0.29	<0.47	14.4	11.6	17.8	5.4	<0.28	56.1
FL01R-S@7'	05/01/2025	7	4.5	138	0.30	<0.46	9.9	7.9	11.3	3.2	<0.28	35.7
FL01-O2@5'	05/02/2025	5	5.4	196	0.27	<0.43	13.4	11.4	15.1	0.33	0.081	46.9
BKG01@4'	05/02/2025	4	5.6	211	0.33	<0.43	14.0	12.4	15.5	0.32	0.053	50.4
BKG01@5'	05/02/2025	5	5.2	208	0.24	<0.43	12.9	10.3	14.8	0.21	0.064	45.8
BKG01@7'	05/02/2025	7	4.7	168	0.24	<0.43	11.7	9.7	14.0	0.25	<0.052	43.7
1.25x Maximum Background Concentration			7.0	264	-	-	-	-	-	0.40	-	-

Notes:

1. **Bold** faced values exceed the ECMC Table 915-1 limit(s), but are within 1.25x background concentrations.
2. **Red** faced values exceed the ECMC Table 915-1 limit(s) and native background concentrations.
3. Red & blue highlighted soil analytical values indicate an exceedance of the referenced soil screening level (SSL).
4. Reporting limit used for 1.25 multiplier when all background results for a specific metal are non-detect.
5. * Indicates laboratory minimum detection limit in excess of SSL.
6. Compound falls within the ECMC Table 915-1 footnote 9.

ECMC = Energy & Carbon Management Commission

(<) = Analytical result is less than the indicated laboratory reporting limit.

mg/kg = Milligrams per kilogram

ft. = Feet

bgs = Below ground surface

NA = Not analyzed

Source material characterization sample, excavated and transported off site for disposal.

Material excavated and transported off site for disposal.



SITE NAME: Schmerge 44-4 Flowline							DATE: 5/1/2025	REM. PROJECT #: 38713	WEATHER: 56 Sunny
SITE DIRECTIONS: Turn left onto 131st Ave, 1 mile turn right, .3 make a U-turn, site is on the left							CLIENT: PDC		
LEGALS AND LAT/LONG: 40.423155, -104.890418							TASMAN PERSONNEL: J. O'Neal, J. Adams		
SOIL TYPES: SM							SURFACE GRADIENT: NW		
SOIL SAMPLING							FACILITY INFRASTRUCTURE		
Date/Time	Soil Sample ID	PID (ppm)	Visual	Olfactory	Photo?	Grab or Lab Sample?	EQUIPMENT	Quantity	Photo?
							Above Ground Storage Tank (AST)		
5/1/2025 12:22	FL01R-W@4'	1.0	No Staining	No Odor	Yes	Lab	Buried or Partially Buried Vessel		
5/1/2025 11:25	FL01R-S@7'	0.1	No Staining	No Odor	Yes	Lab	Separator		
							Emission Control Device (ECD)		
							Dump Line		
							Wellhead	1	✓
							Flowline	1	✓
							Other:		
							Soil Loads Removed		
							IMPACTED SOIL IDENTIFIED? No		
							ESTIMATED VOLUME OF IMPACTS:		
							Date	Number	CY
							Total Removed	0	0
							Disposal Facility:		
							Groundwater Recovery		
							DATE GW ENCOUNTERED:	DEPTH:	
							GROUNDWATER IN CONTACT WITH IMPACTED SOIL?		
							LNAPL OR SHEEN OBSERVED ON GW?		
GROUNDWATER SAMPLING							Date	BBLs	
Date/Time	Groundwater Sample ID	Depth Collected	Turbid?	Sheen?	Odor?	Photo?			
							Total Removed	0	
							Disposal Facility:		





Site Area/AOC: Schmerge 44-4 Flowline Client: PDC

Daily Forecast/Weather: 56 Sunny Personnel: J. O'Neal, J. Adams

Task/Location Description: Flowline Decommissioning

Need photo log?

Need another Observation form?

							
Equipment ID: FL01R-S@7'		Equipment Type:		Equipment ID: FL01R-W@4'		Equipment Type:	
Material:	Volume:	Contents:		Material:	Volume:	Contents:	
Notes/Conditions:				Notes/Conditions:			



FLOWLINE ABANDONMENT FORM

SITE NAME: Schmerge 44-4							DATE: 5/2/2025	REM. PROJECT #: 38713	WEATHER: 57F Sunny	
SITE DIRECTIONS: Turn left onto 131st Ave, 1 mile turn right, .3 make a U-turn, site is on the left							CLIENT: PDC			
LEGALS AND LAT/LONG: 40.423140, -104.890420							TASMAN PERSONNEL: J. O'Neal			
SOIL TYPES: Silty Sand - SM							SURFACE GRADIENT: NW			
SOIL SAMPLING							FACILITY INFRASTRUCTURE			
Date/Time	Soil Sample ID	PID (ppm)	Visual	Olfactory	Photo?	Grab or Lab Sample?	EQUIPMENT	Quantity	Photo?	
							Above Ground Storage Tank (AST)			
5/2/2025 13:06	FL01-01@4'	0.2	No Staining	No Odor	Yes	Grab	Buried or Partially Buried Vessel			
5/2/2025 13:55	FL01-02@5'	0.4	No Staining	No Odor	Yes	Lab	Separator			
							Emission Control Device (ECD)			
							Dump Line			
5/2/2025 11:39	BKG01@4'	0.5	No Staining	No Odor	Yes	Lab	Wellhead	1	✓	
5/2/2025 11:41	BKG01@7'	0.6	No Staining	No Odor	Yes	Lab	Flowline	1	✓	
5/2/2025 11:40	BKG01@5'	0.5	No Staining	No Odor	Yes	Lab	Other:			
							Soil Loads Removed			
							IMPACTED SOIL IDENTIFIED? No			
							ESTIMATED VOLUME OF IMPACTS:			
							Date	Number	CY	
							Total Removed	0	0	
							Disposal Facility:			
							Groundwater Recovery			
							DATE GW ENCOUNTERED:		DEPTH:	
							GROUNDWATER IN CONTACT WITH IMPACTED SOIL?			
							LNAPL OR SHEEN OBSERVED ON GW?			
GROUNDWATER SAMPLING							Date	BBLs		
Date/Time	Groundwater Sample ID	Depth Collected	Turbid?	Sheen?	Odor?	Photo?				
							Total Removed	0		
							Disposal Facility:			





Site Area/AOC: Schmerge 44-4 Client: PDC


Daily Forecast/Weather: 57F Sunny Personnel: J. O'Neal

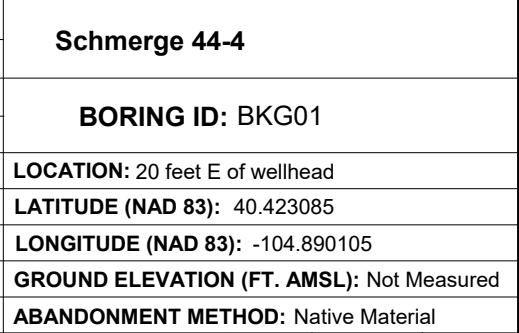
Task/Location Description: Flowline decommissioning

Need photo log?

Need another Observation form?

							
Equipment ID: BKG01@4', 5', 7'		Equipment Type:		Equipment ID: FL01-01@4'		Equipment Type:	
Material:	Volume:	Contents:		Material:	Volume:	Contents:	
Notes/Conditions:				Notes/Conditions:			

					
Equipment ID: FI01-02 @5'		Equipment Type:	Equipment ID:		Equipment Type:
Material:	Volume:	Contents:	Material:	Volume:	Contents:
Notes/Conditions:			Notes/Conditions:		



Drilling / Sample Method:		Laboratory Sample Types:	
Macro-Core	Hand Auger	Geotechnical Lab	Geotechnical & Analytical Chemistry Lab
 Expendable Well Tip	 HydroPunch Groundwater Sampler	 Analytical Chemistry Lab	