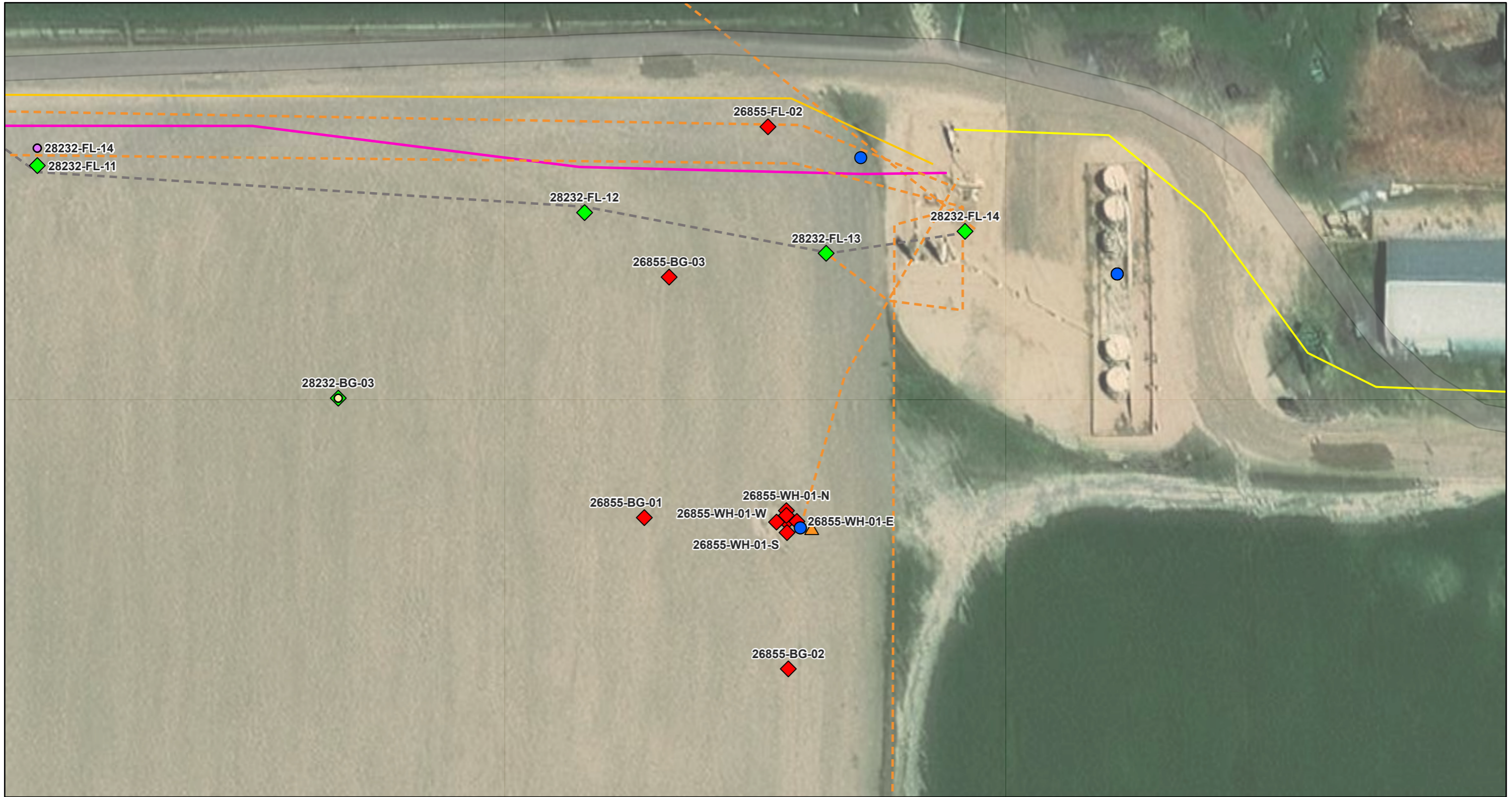


26855 Proposed Soil Sample Map



7/16/2025, 9:49:54 PM

1:564

EQulS Sample Location (ERM Global Database) Sample Location (Editable)

○ Background

◆ Proposed Location

○ Flowline

◆ Completed

● Remediation (ECMC Form 27)

Production Line (Editable)

Remediation Tracking (Editable)

▲ Out of Compliance Within 10 Days

--- Preliminary - Digitized from Site Map

--- Confirmed by Desktop Review (Removed)

Field Confirmed (Abandoned in Place)

Subsurface Clearance Utilities (Editable)

Flow Line

Gas

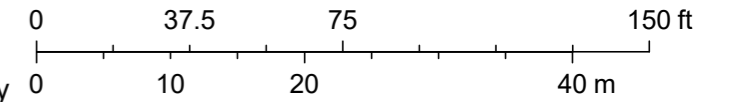
World Imagery

Low Resolution 15m Imagery

High Resolution 60cm Imagery

High Resolution 30cm Imagery

Citations



Maxar, Microsoft, Sources: Esri, TomTom, Garmin, FAO, NOAA, USGS, © OpenStreetMap contributors, and the GIS User Community