

Well Name & API: **CORNISH 17-11, 05-123-24169**



Flowline Abandonment Type:
Partial Abandon in Place to area of conflict due to third-party pipeline crossing.

Flowlines

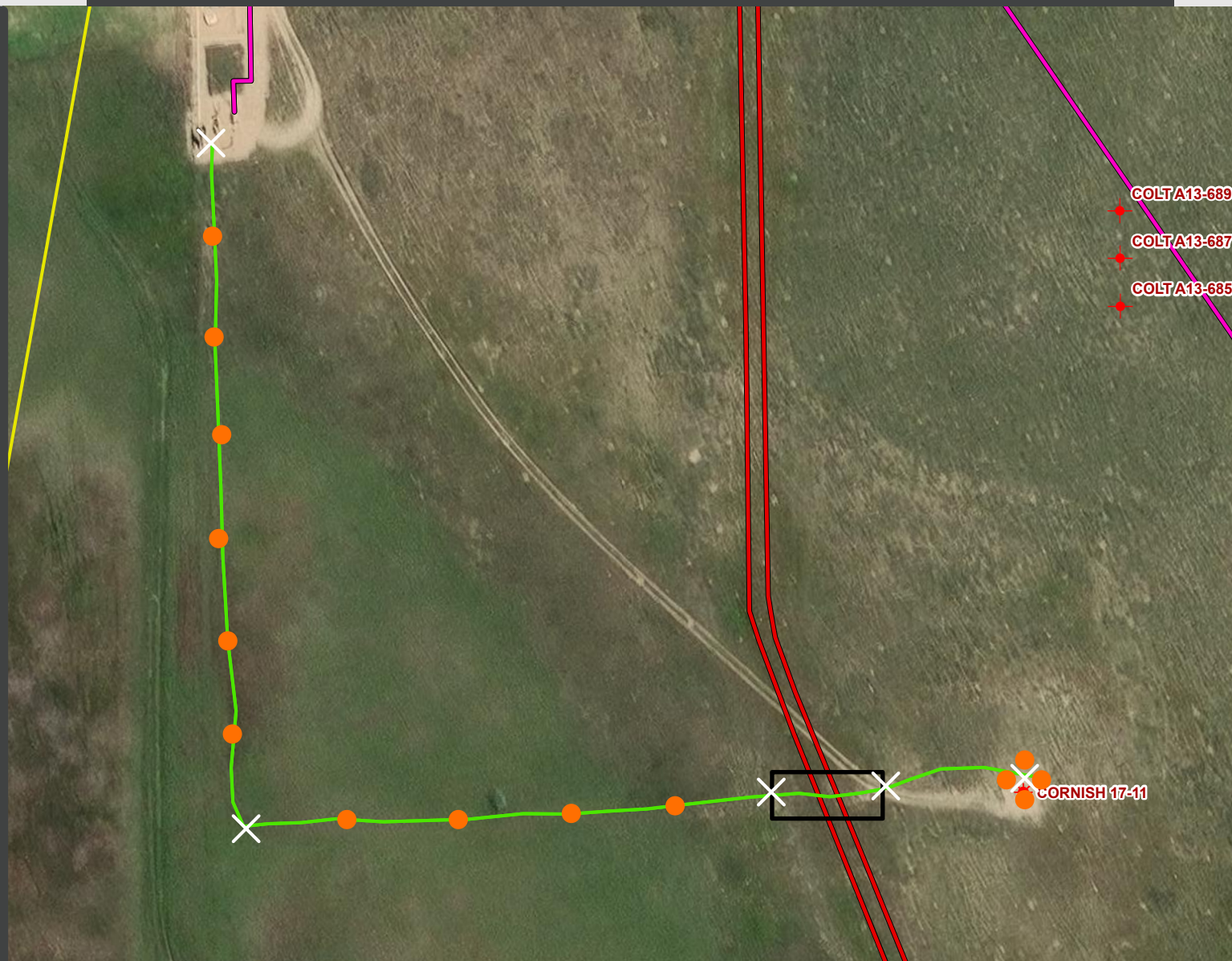
- Abandoned
- Active
- Out of Service
- Pre-Commissioned
- Removed
- Turned into Air Line
- Area of Conflict (Proposed Abandon-in-Place Area)
- Proposed Soil Sample Location
- Field Screening Location

Wells

- Active Well
- Abandoned Location
- Plugged & Abandoned
- Producing
- Shut-In
- Temporarily Abandoned
- Waiting on Completion

Third-Party Pipelines

- NWI Wetlands



Well Latitude/Longitude: 40.4918300/-104.4680000
Flowline Length (ft): 1121

Flowline Point A Latitude/Longitude: 40.4918649/-104.4679714
Flowline Point B Latitude/Longitude: 40.4931954/-104.4701872

Created by: CJENCK
Date: 3/31/2025

