

Flowline Abandonment Type:

Previously Abandoned 07/17/2018 - Prior to 1105.d.(2) requirements enacted 1/15/2020.

Flowlines

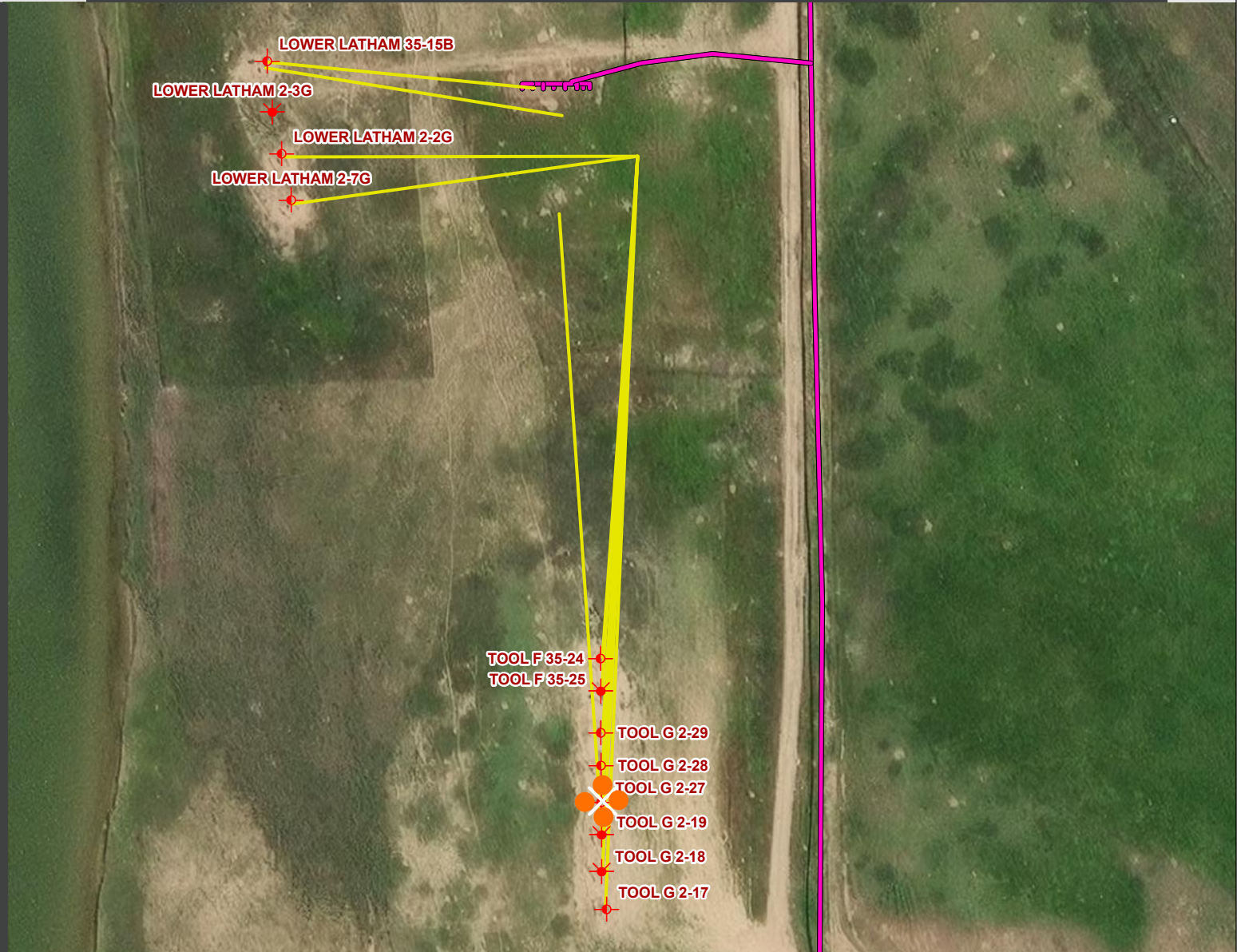
- Abandoned
- Active
- Out of Service
- Pre-Commissioned
- Removed
- Turned into Air Line
- Area of Conflict
(Proposed Abandon-in-Place Area)
- X Proposed Soil Sample Location
- Field Screening Location

Wells

- Active Well
- ◆ Abandoned Location
- ✱ Plugged & Abandoned
- ✱ Producing
- ✱ Shut-In
- ◆ Temporarily Abandoned
- ◻ Waiting on Completion

Third-Party Pipelines

- — — —
- — — —
- NWI Wetlands



Well Latitude/Longitude: 40.3488400/-104.6262160

Flowline Length (ft): 456

Flowline Point A Latitude/Longitude: 40.3488396/-104.6262156

Flowline Point B Latitude/Longitude: 40.3500900/-104.6261100

Created by: CJENCK

Date: 5/16/2025

