

WGS84
±10ft

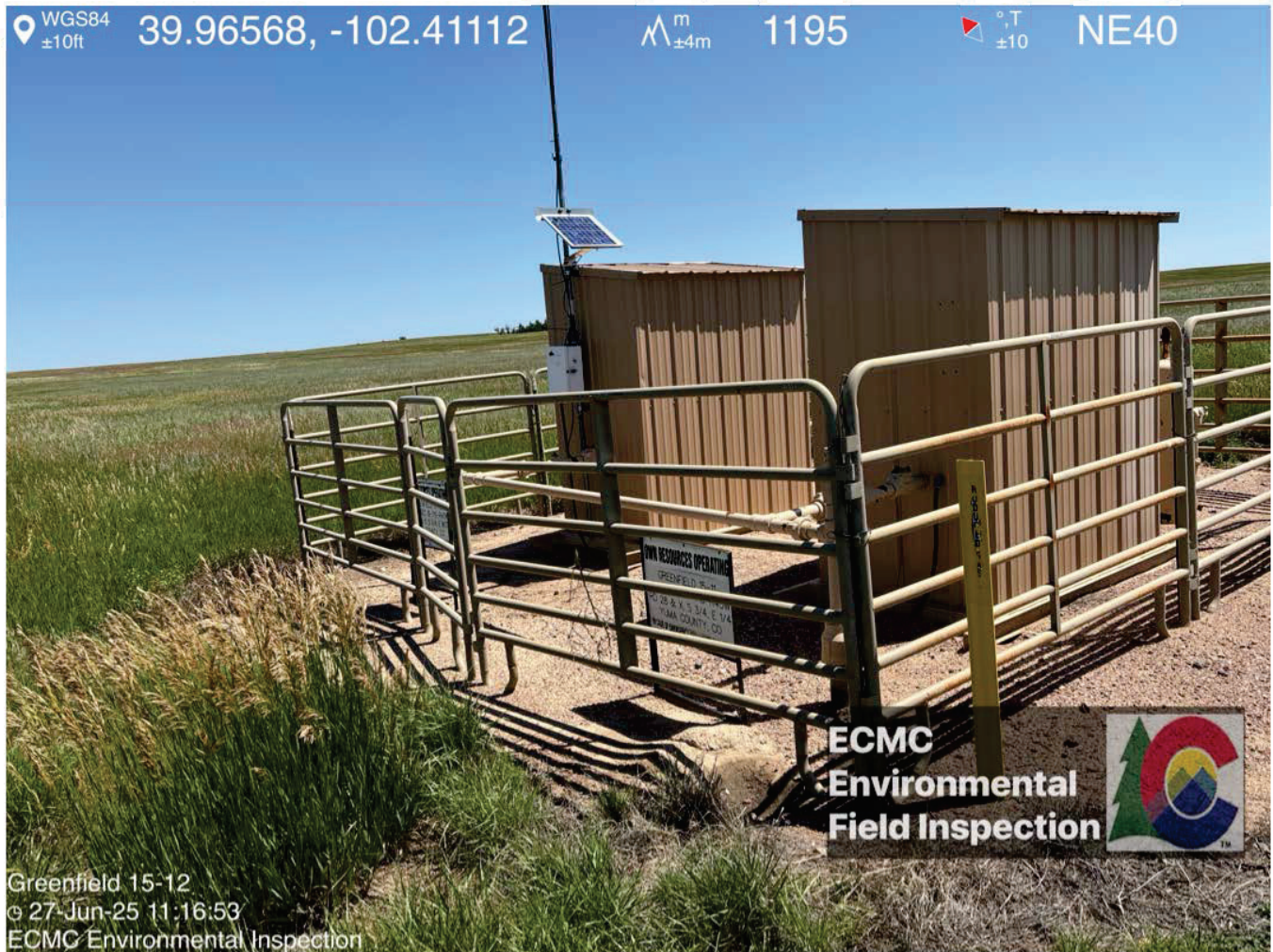
39.96568, -102.41112

m
±4m

1195

°T
±10

NE40



ECMC
Environmental
Field Inspection



Greenfield 15-12
© 27-Jun-25 11:16:53
ECMC Environmental Inspection

WGS84
±16ft

39.96550, -102.40954

m
±4m

1190

°T
±13

W255

Area disturbed by
remediation of Spill ID
489816 - Loose/
uncompacted Soil &
Weeds & Erosion

Stormwater runoff
& erosion/sediment
transport flow
direction

ECMC
Environmental
Field Inspection



Greenfield 15-12
© 27-Jun-25 11:20:13
ECMC Environmental Inspection

WGS84
±31ft

39.96549, -102.40961

m
±5m

1190

°T
±11

S175

Area disturbed by
remediation of Spill ID
489816 - Loose/
uncompacted Soil &
Weeds & Erosion

ECMC
Environmental
Field Inspection



Greenfield 15-12
27-Jun-25 11:20:36
ECMC Environmental Inspection

WGS84
±28ft

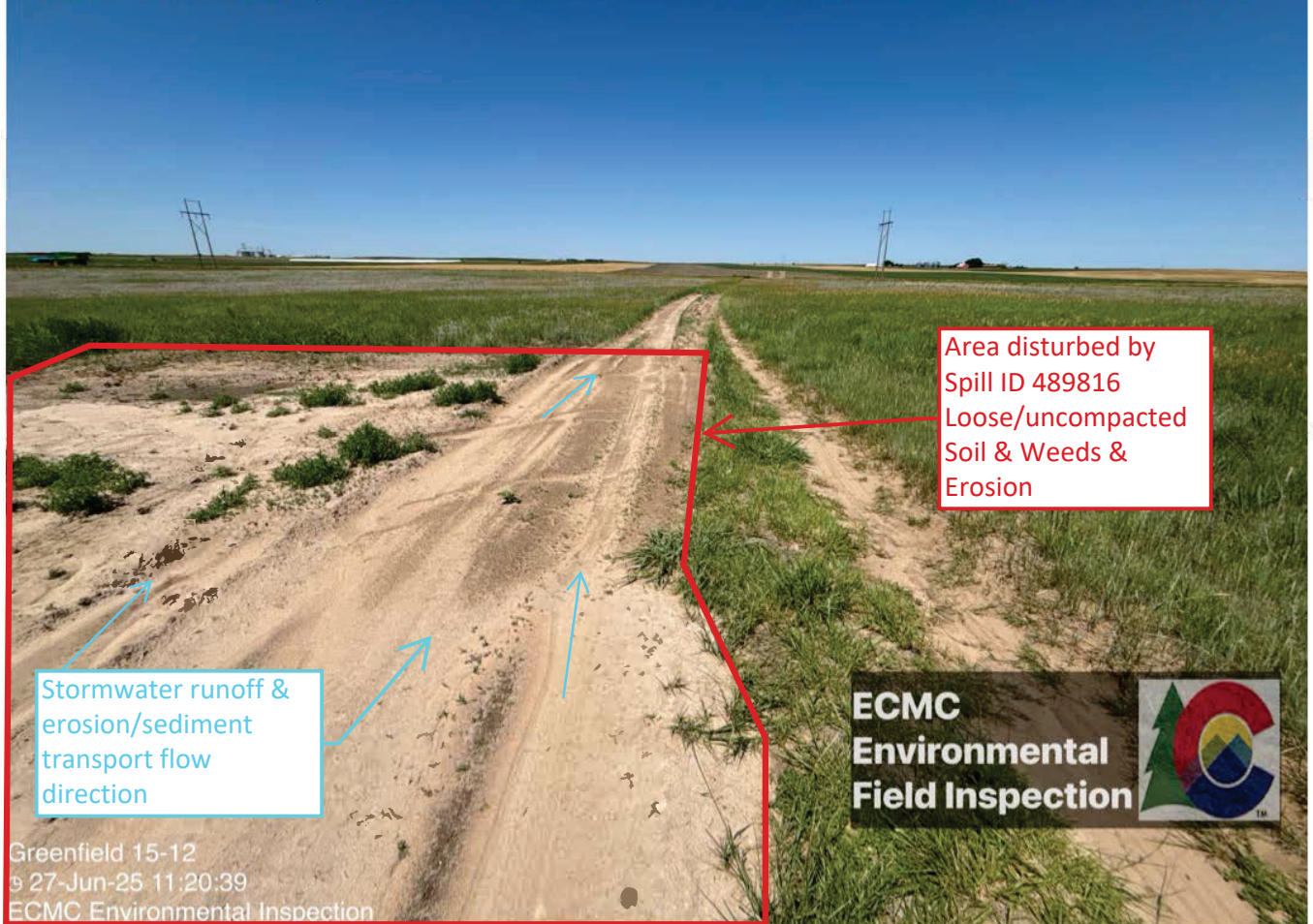
39.96549, -102.40961

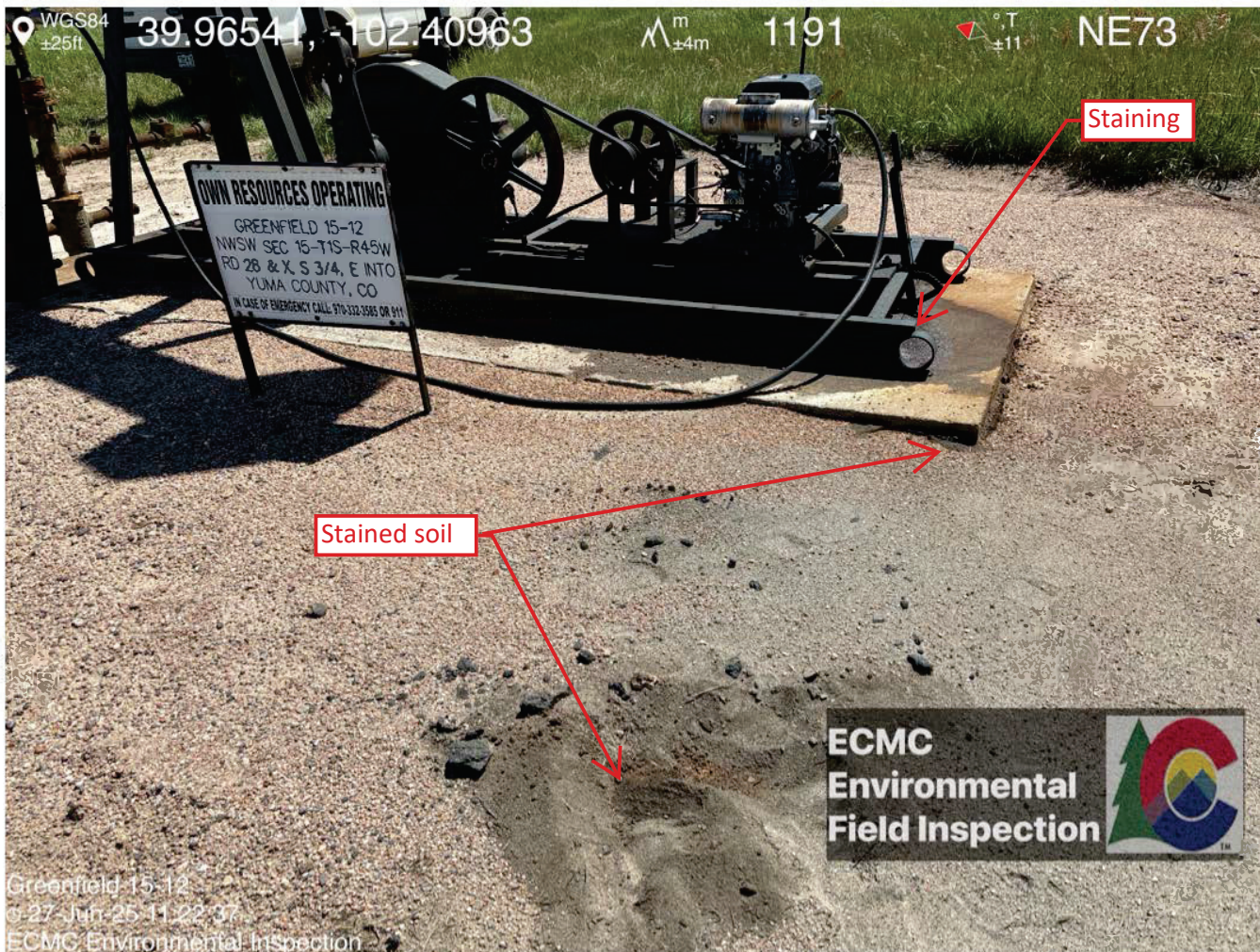
m
±4m

1190

°T
±12

SW209





WGS84
±25ft

39.96541, -102.40963

m
±4m

1191

°T
±11

NE73

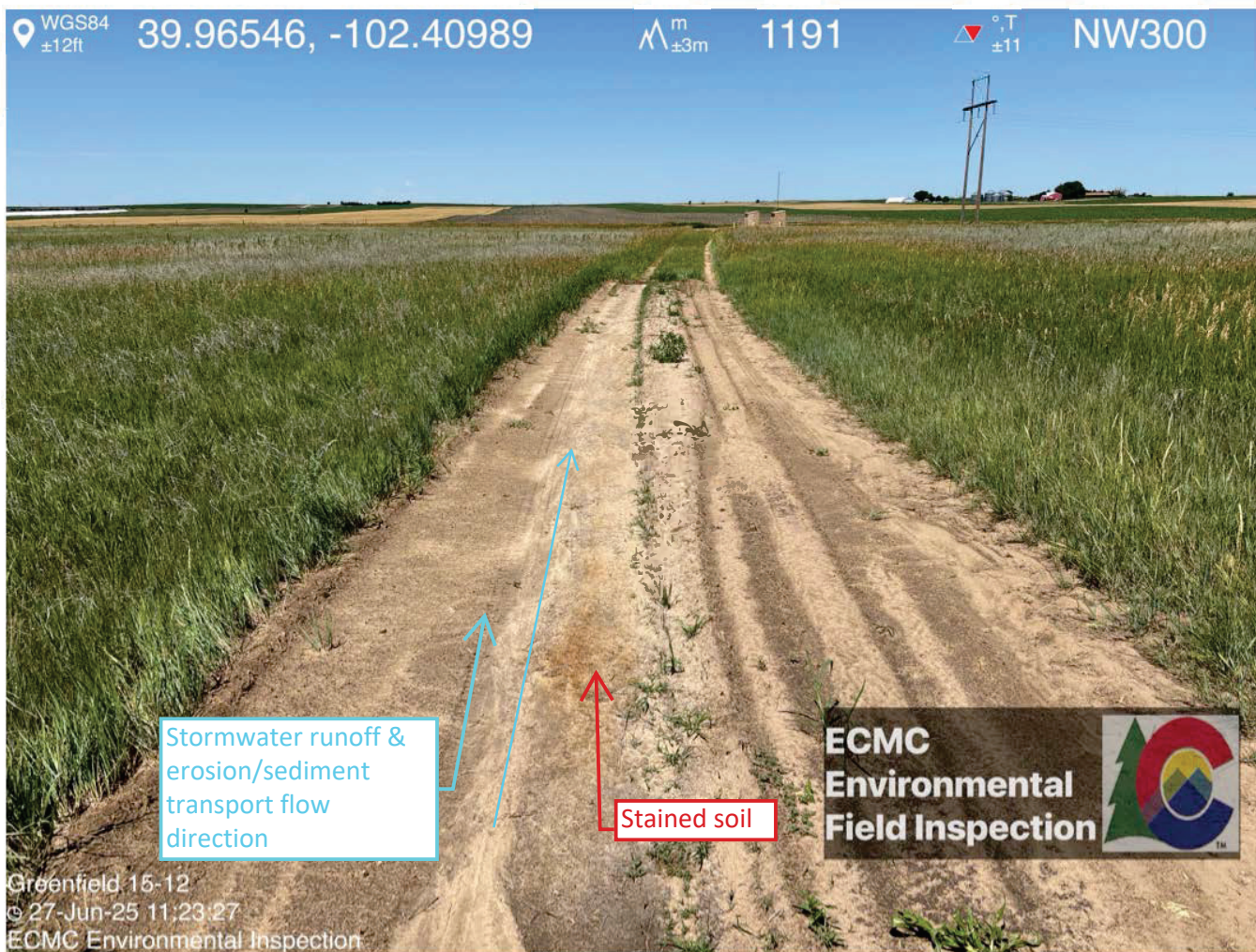
Staining

Stained soil

ECMC
Environmental
Field Inspection



Greenfield 15-12
© 27 Jun 25 11:22:37
ECMC Environmental Inspection



Stormwater runoff & erosion/sediment transport

WGS84 39.96585, -102.40565 Δ ± 12 ft ± 3 m 1196 Δ ± 12 $^{\circ}$,T NE63



Greenfield 15-11
© 27-Jun-25 11:27:55
ECMC Environmental Inspection
Greenfield 15-11 Well

WGS84 $\pm 16\text{ft}$ 39.96587, -102.40552 m $\pm 4\text{m}$ 1197 $^{\circ}\text{T}$ ± 11 W274

Debris/
unused
equipment

Staining

ECMC
Environmental
Field Inspection



Greenfield 15-11
27-Jun-25 11:28:17
ECMC Environmental Inspection
Greenfield 15-11 Well