

Approximated area immediately downgradient of source which appears disturbed by remediation of Spill ID 490244 based on loose/uncompacted soil susceptible to erosion & sediment transport

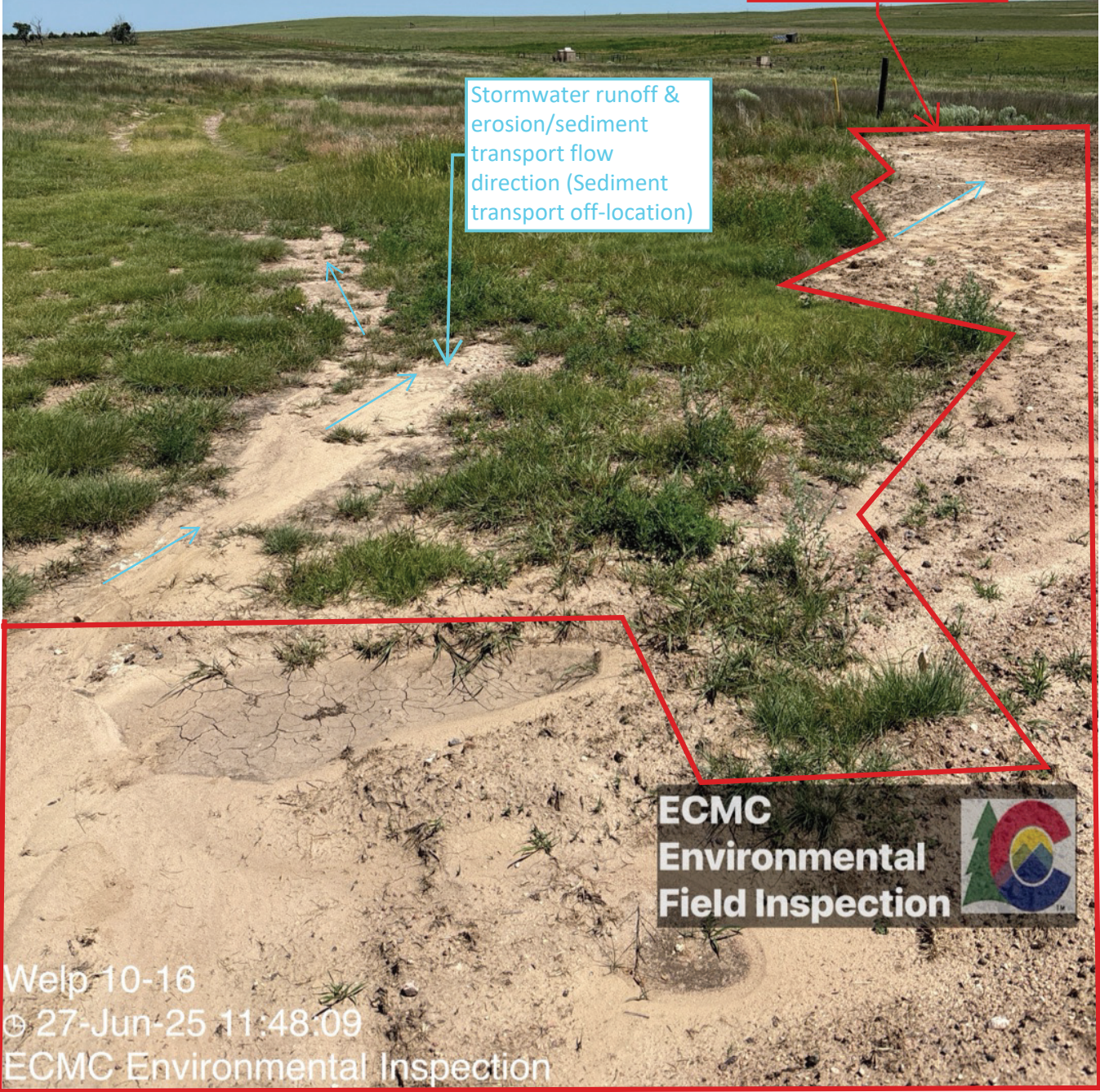
Approximate source area - Appears relatively undisturbed

OWN RESOURCES OPERATING
WELP 10-16
SESE SEC. 10
R0 28 & RD Y, N 1/4 SW 1/8 N10
YUMA COUNTY, CO
WELP 10-16



Approximated area downgradient of source which appears to have been disturbed by remediation of Spill ID 490244 based on loose/uncompacted & stained soil susceptible to erosion & sediment transport

Stormwater runoff & erosion/sediment transport flow direction (Sediment transport off-location)



ECMC
Environmental
Field Inspection 

WGS84
±12ft

39.97743, -102.39410

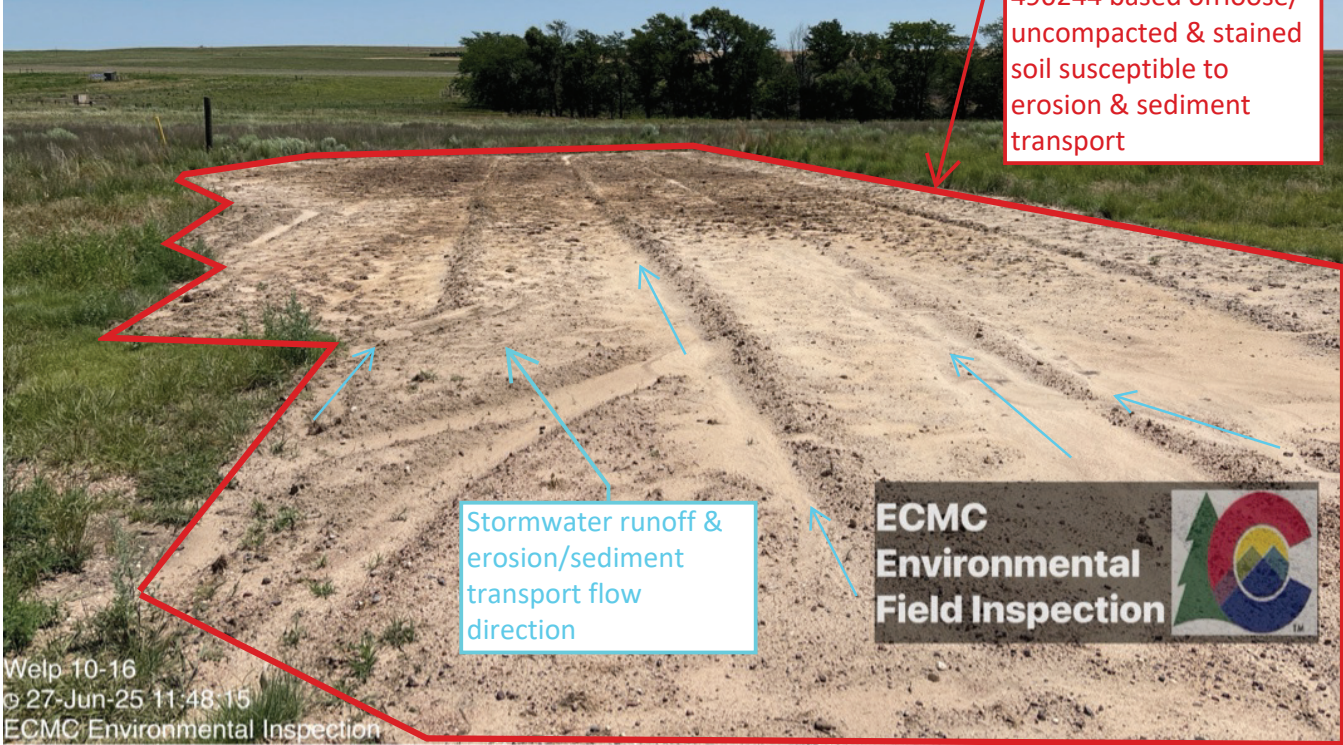
m
±3m

1198

°T
±10

NE47

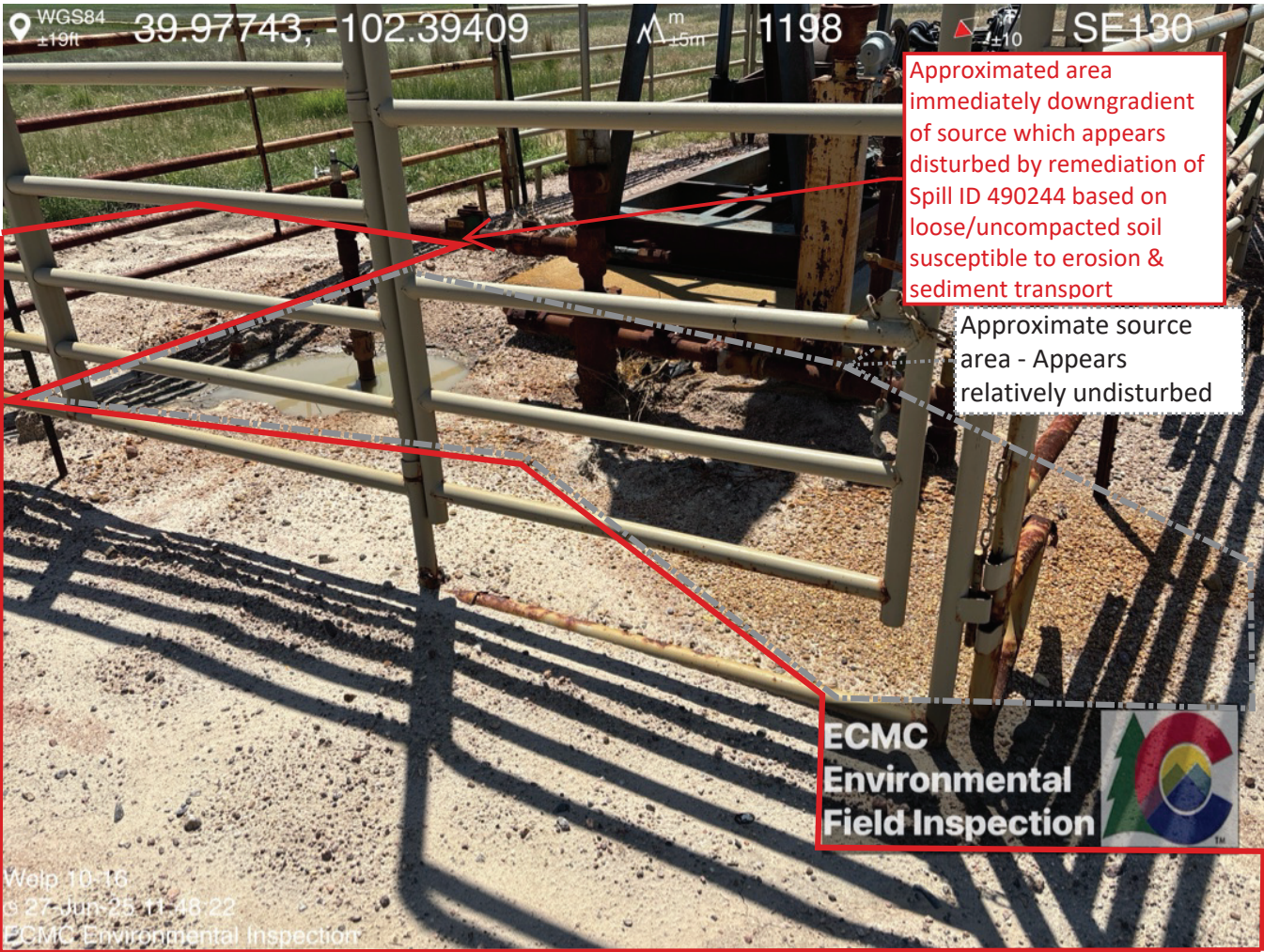
Approximated area
downgradient of source
which appears to have
been disturbed by
remediation of Spill ID
490244 based on loose/
uncompacted & stained
soil susceptible to
erosion & sediment
transport



Stormwater runoff &
erosion/sediment
transport flow
direction



Welp 10-16
© 27-Jun-25 11:48:15
ECMC Environmental Inspection



WGS84 39.97743, -102.39409

m 1198

SE130

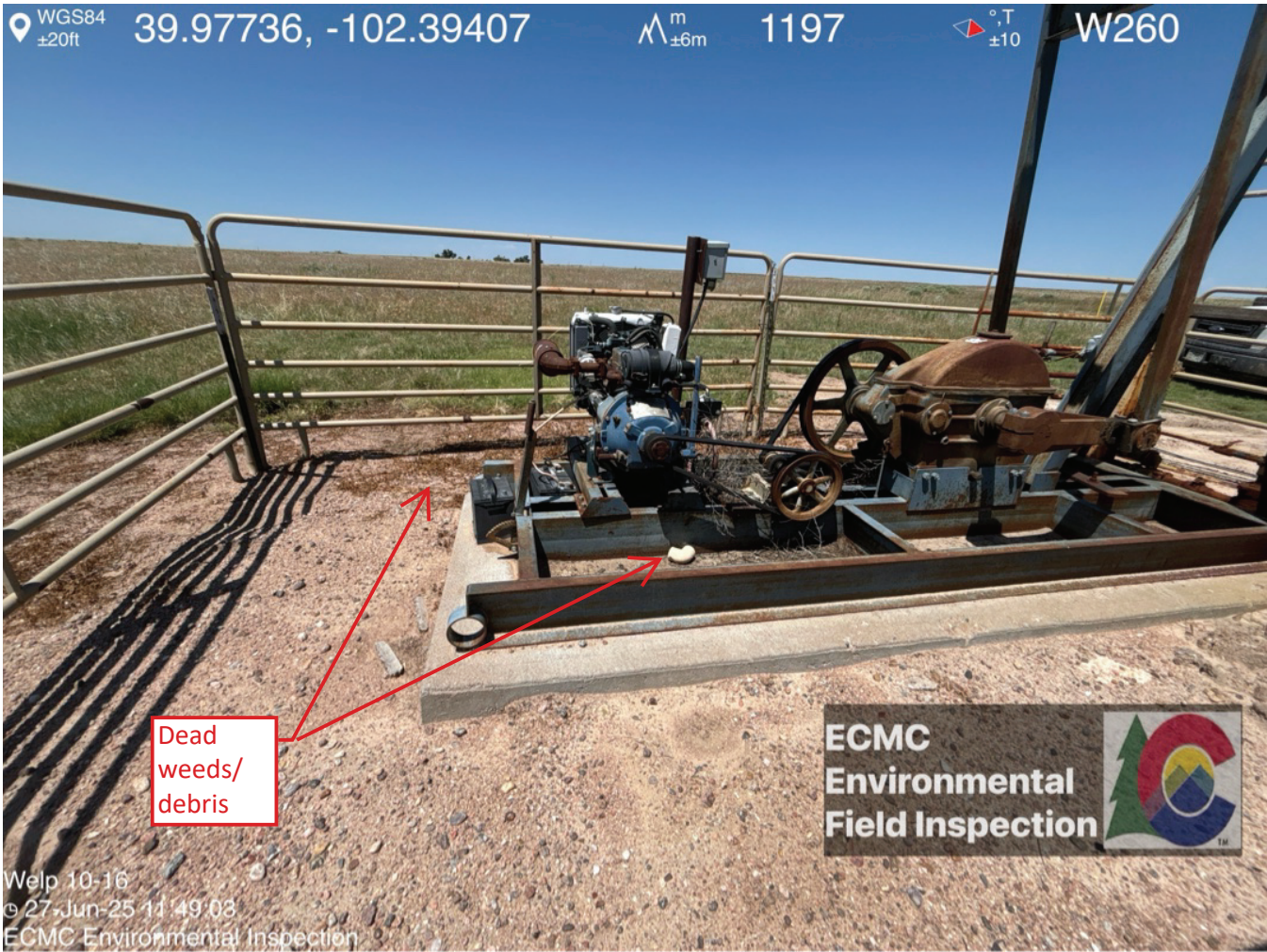
Approximated area immediately downgradient of source which appears disturbed by remediation of Spill ID 490244 based on loose/uncompacted soil susceptible to erosion & sediment transport

Approximate source area - Appears relatively undisturbed

ECMC
Environmental
Field Inspection



Welp 10-16
© 27-Jun-25 11:48:22
ECMC Environmental Inspection



Dead
weeds/
debris

ECMC
Environmental
Field Inspection



Welp 10-16
© 27-Jun-25 11:49:03
ECMC Environmental Inspection

WGS84
±20ft

39.97743, -102.39403

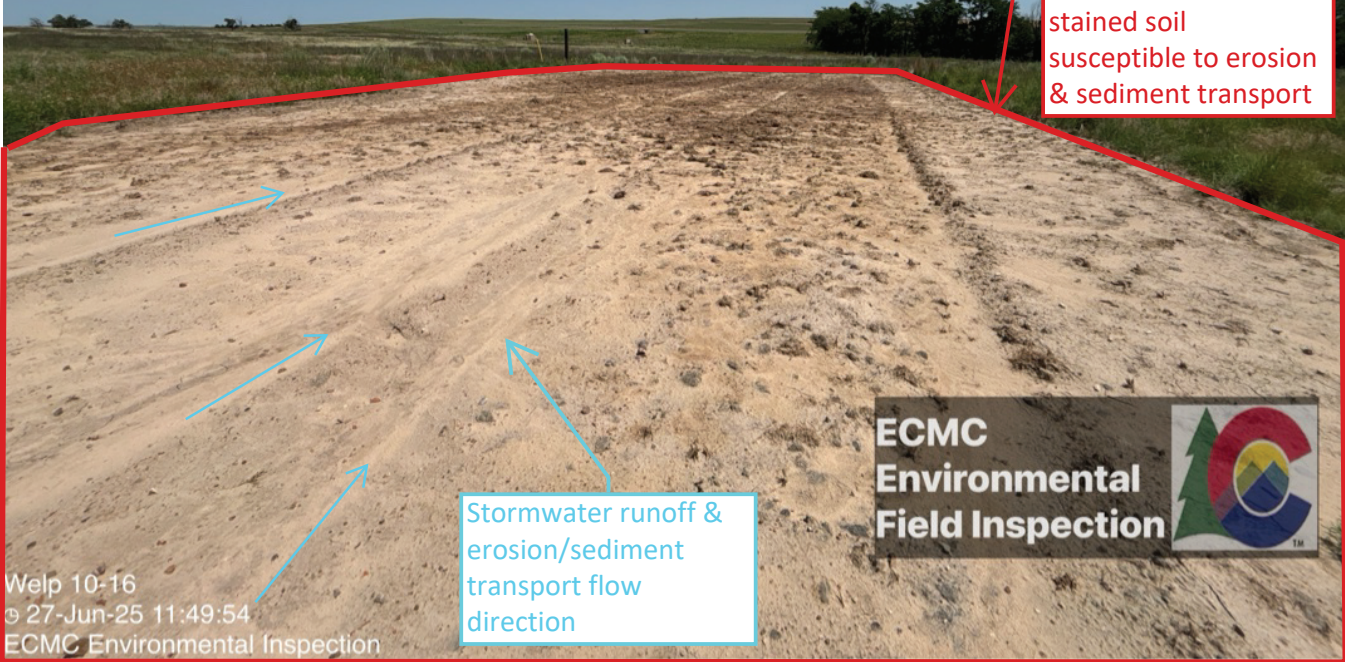
m
±4m

1197

°T
±11

NE49

Approximated area
downgradient of
source which appears
to have been
disturbed by
remediation of Spill ID
490244 based on
loose/uncompacted &
stained soil
susceptible to erosion
& sediment transport



Stormwater runoff &
erosion/sediment
transport flow
direction



Welp 10-16
27-Jun-25 11:49:54
ECMC Environmental Inspection

WGS84 39.97745, -102.39405 \wedge m 1196 °T SW196
±12ft ±3m ±11



Bird nest in counterweight

ECMC
Environmental
Field Inspection



Welp 10-16
© 27-Jun-25 11:51:53
ECMC Environmental Inspection