

Legend

○ Site Location

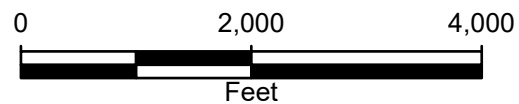
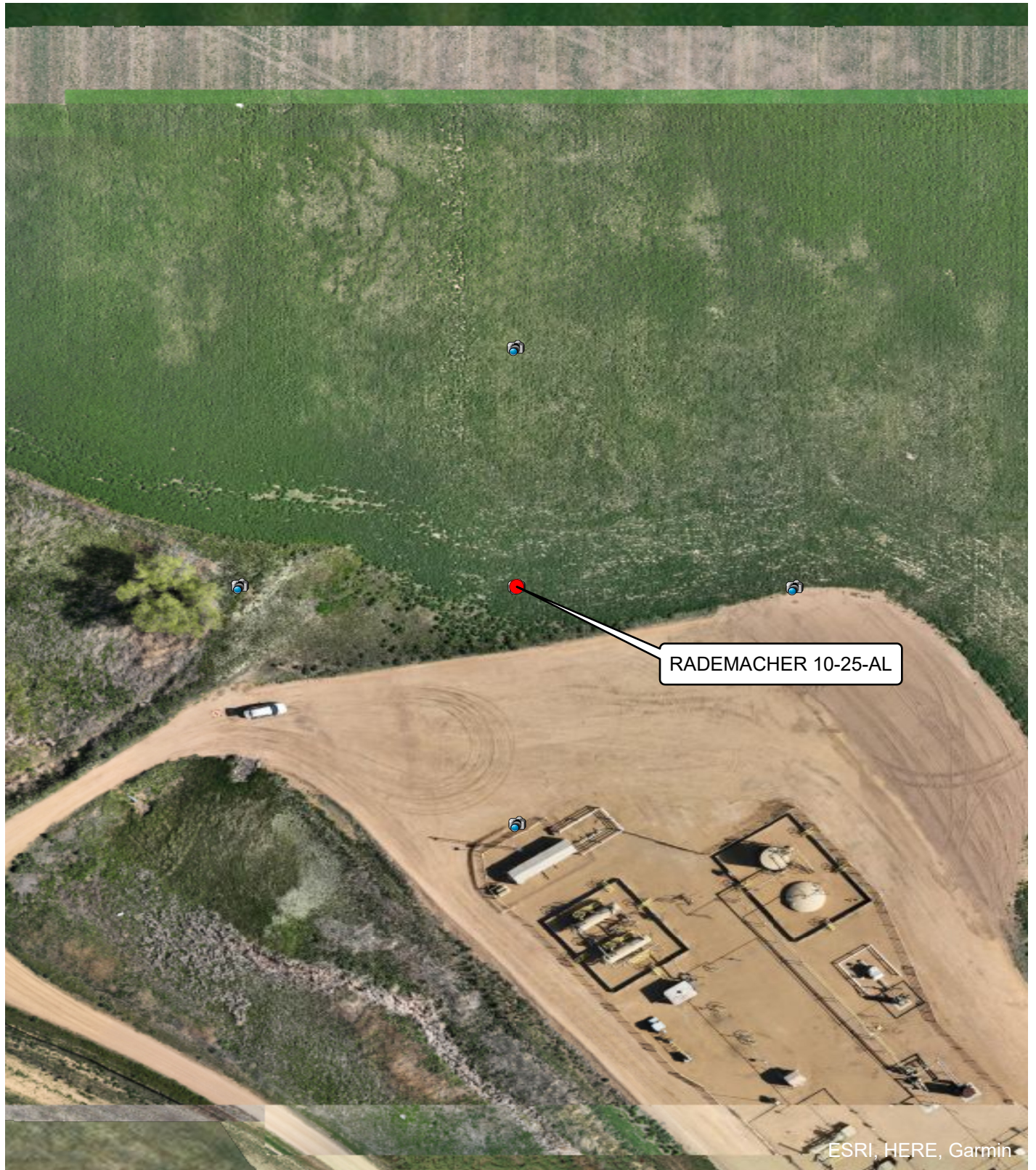


FIGURE 1
SITE LOCATION MAP
RADEMACHER 10-25-AL
NWSE SEC 25-T3N-R68W
WELD, COLORADO





Legend

- Plugged and Abandoned Well
- 📷 Cardinal Direction Photo Locations
- Cardinal Direction Photos Taken 150' from Well

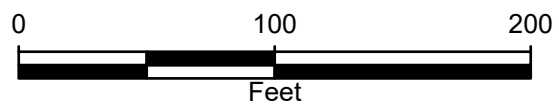


FIGURE 2
SITE MAP
RADEMACHER 10-25-AL
NWSE SEC 25-T3N-R68W
WELD, COLORADO



FIGURE 3: PHOTOGRAPHIC LOG



Photograph 1: View facing north as required in Energy and Carbon Management Commission (ECMC) Rule 1004.
Photo Taken from GPS 40.193320, -104.947830



Photograph 2: View facing east as required in Energy and Carbon Management Commission (ECMC) Rule 1004.
Photo Taken from GPS 40.193671, -104.948238



FIGURE 3: PHOTOGRAPHIC LOG



Photograph 3: View facing south as required in Energy and Carbon Management Commission (ECMC) Rule 1004.
Photo Taken from GPS 40.194022, -104.947831



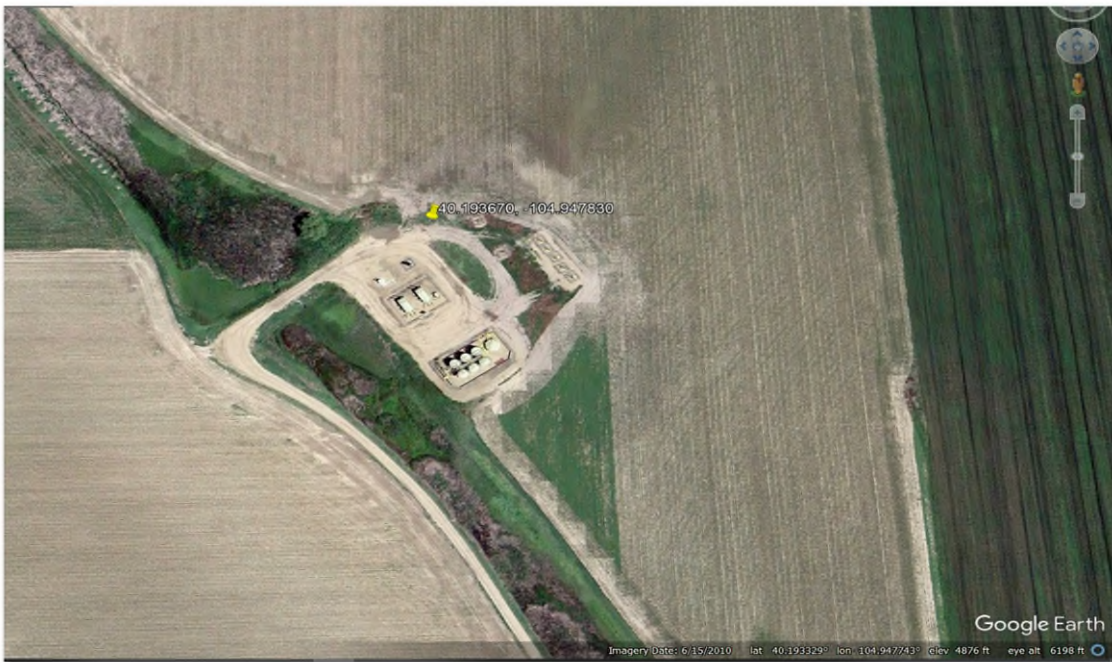
Photograph 4: View facing west as required in Energy and Carbon Management Commission (ECMC) Rule 1004.
Photo Taken from GPS 40.193669, -104.947421



Attachments: Historic Imagery



Imagery Date: February 29, 2008

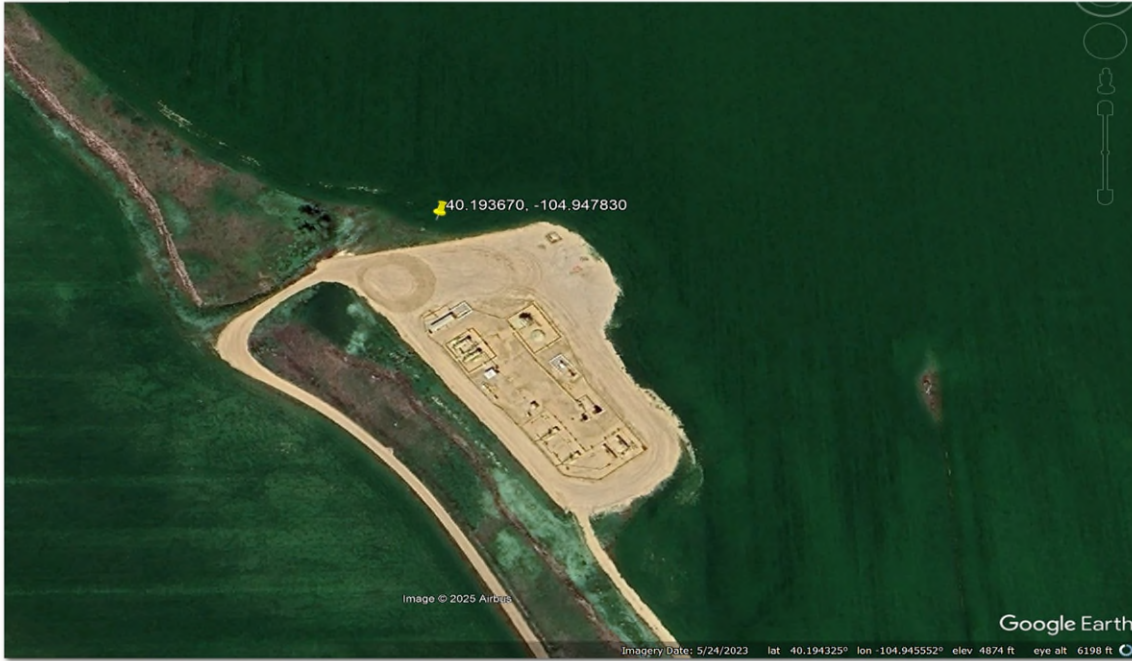


Imagery Date: June 15, 2010

Site Name: Rademacher 10-25
Imagery Source: Google Earth



Attachments: Historic Imagery



Imagery Date: May 25, 2023

Site Name: Rademacher 10-25
Imagery Source: Google Earth

