

DATE: January 2024
 DESIGNED BY: J. Watts
 DRAWN BY: M. Kaczmarek

Tasman, Inc.
 6855 W. 119th Ave
 Broomfield, CO 80020

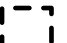


DCP Operating Co, LP
CR40 & CR35 (BF-3-2) 1-2024
 NESW, Section 25, Township 4 North, Range 66W
 Weld County, Colorado

Site Location Map

Figure
1



Legend

-  Approximate excavation footprint
-  Point of release
-  Monitoring Well Location

Notes:

All locations are approximate unless otherwise noted.

0 ft. 35 ft. 70 ft.

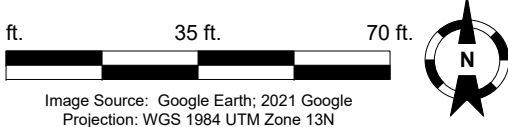



Image Source: Google Earth; 2021 Google
Projection: WGS 1984 UTM Zone 13N

DATE:	June 2024
DESIGNED BY:	J. Watts
DRAWN BY:	K. MacDonald

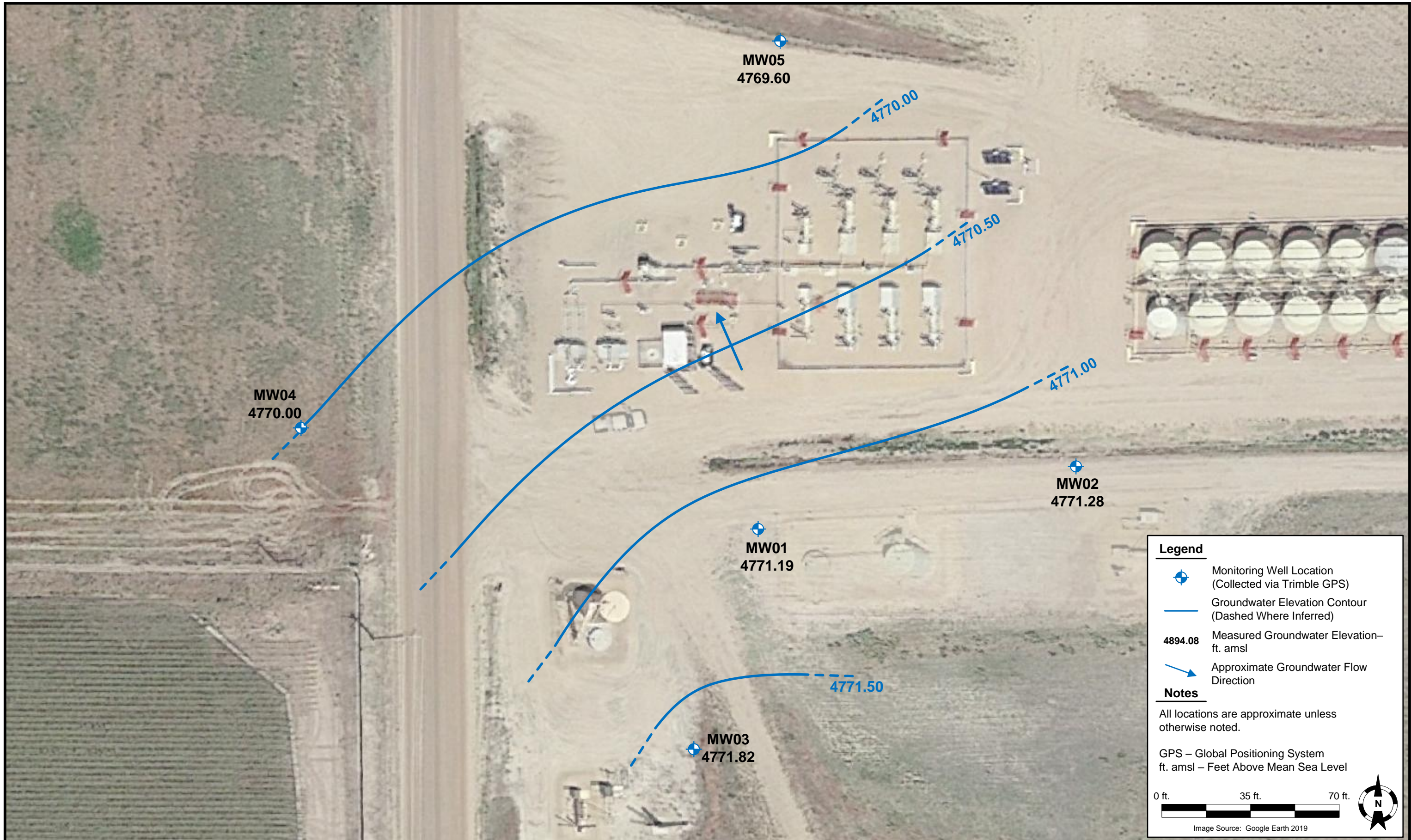


Tasman, Inc.
6855 W. 119th Avenue
Broomfield, Colorado 80020

DCP Operating Co, LP
CR40 & CR35 (BF 3-2)
NWSW, Section 25, Township 4 North, Range 66 West
Weld County, Colorado

Site Overview Map

Figure
2



Legend

- Monitoring Well Location (Collected via Trimble GPS)
- Groundwater Elevation Contour (Dashed Where Inferred)
- 4894.08** Measured Groundwater Elevation—ft. amsl
- Approximate Groundwater Flow Direction

Notes

All locations are approximate unless otherwise noted.

GPS – Global Positioning System
ft. amsl – Feet Above Mean Sea Level

0 ft. 35 ft. 70 ft.

Image Source: Google Earth 2019

DATE:	May 23, 2025
DESIGNED BY:	B. Humphrey
DRAWN BY:	K. MacDonald



Tasman, Inc.
4725 Independence St.
Wheat Ridge, Colorado, 80033

DCP Operating Co, LP
CR40 & CR35 (BF 3-2)
NWSW, Section 25, Township 4 North, Range 66 West
Weld County, Colorado

Groundwater Elevation Contour Map
(5/20/2025)

MW04	
Compound	5/20/2025
Benzene (µg/L)	<1.00
Toluene (µg/L)	<1.00
Ethylbenzene (µg/L)	<1.00
Total Xylenes (µg/L)	<3.00
1,2,4-Trimethylbenzene (µg/L)	<1.00
1,3,5-Trimethylbenzene (µg/L)	<1.00
Naphthalene (µg/L)	<5.00
Total Dissolved Solids (mg/L)	1,580
Chloride (mg/L)	213
Sulfate (mg/L)	367

MW05	
Compound	5/20/2025
Benzene (µg/L)	<1.00
Toluene (µg/L)	<1.00
Ethylbenzene (µg/L)	<1.00
Total Xylenes (µg/L)	<3.00
1,2,4-Trimethylbenzene (µg/L)	<1.00
1,3,5-Trimethylbenzene (µg/L)	<1.00
Naphthalene (µg/L)	<5.00
Total Dissolved Solids (mg/L)	1,420
Chloride (mg/L)	162
Sulfate (mg/L)	299

MW02	
Compound	5/20/2025
Benzene (µg/L)	<1.00
Toluene (µg/L)	<1.00
Ethylbenzene (µg/L)	<1.00
Total Xylenes (µg/L)	<3.00
1,2,4-Trimethylbenzene (µg/L)	<1.00
1,3,5-Trimethylbenzene (µg/L)	<1.00
Naphthalene (µg/L)	<5.00
Total Dissolved Solids (mg/L)	2,520
Chloride (mg/L)	474
Sulfate (mg/L)	745

MW01	
Compound	5/20/2025
Benzene (µg/L)	42.5
Toluene (µg/L)	<1.00
Ethylbenzene (µg/L)	4.28
Total Xylenes (µg/L)	26.8
1,2,4-Trimethylbenzene (µg/L)	3.91
1,3,5-Trimethylbenzene (µg/L)	2.43
Naphthalene (µg/L)	<5.00
Total Dissolved Solids (mg/L)	1,480
Chloride (mg/L)	241
Sulfate (mg/L)	395

MW03	
Compound	5/20/2025
Benzene (µg/L)	<1.00
Toluene (µg/L)	<1.00
Ethylbenzene (µg/L)	<1.00
Total Xylenes (µg/L)	<3.00
1,2,4-Trimethylbenzene (µg/L)	<1.00
1,3,5-Trimethylbenzene (µg/L)	<1.00
Naphthalene (µg/L)	<5.00
Total Dissolved Solids (mg/L)	515
Chloride (mg/L)	79.9 J6
Sulfate (mg/L)	195

Legend

- Approximate excavation footprint
- Point of release
- Monitoring Well Location

ECMC Table 915-1 Groundwater Standards	
Compound	(µg/L)
Benzene	5
Toluene	560
Ethylbenzene	700
Total Xylenes	1,400
1,2,4-Trimethylbenzene	67
1,3,5-Trimethylbenzene	67
Naphthalene	140
Total Dissolved Solids (mg/L)	1.25x local background
Chloride (mg/L)	250 mg/L or 1.25 x local background
Sulfate (mg/L)	250 mg/L or 1.25 x local background

Notes:

ECMC – Colorado Energy and Carbon Management Commission
 GPS – Global Positioning System
Bold red text denotes exceedances of the ECMC groundwater standards
 µg/L – micrograms per liter
 mg/L – milligrams per liter
 J6 – The sample matrix interfered with the ability to make any accurate determination; spike value is low
 MW02 used as local background for inorganic parameters
 All locations are approximate unless otherwise noted.

0 ft. 35 ft. 70 ft.

Image Source: Google Earth; 2021 Google
 Projection: WGS 1984 UTM Zone 13N

DATE: June 10, 2025

DESIGNED BY: J. Watts

DRAWN BY: K. MacDonald



Tasman, Inc.
 4725 Independence St.
 Wheat Ridge, Colorado 80033

DCP Operating Co, LP
CR40 & CR35 (BF 3-2)
 NWSW, Section 25, Township 4 North, Range 66 West
 Weld County, Colorado

Groundwater Analytical
 Results Map
 (May 20, 2025)

Figure
 4