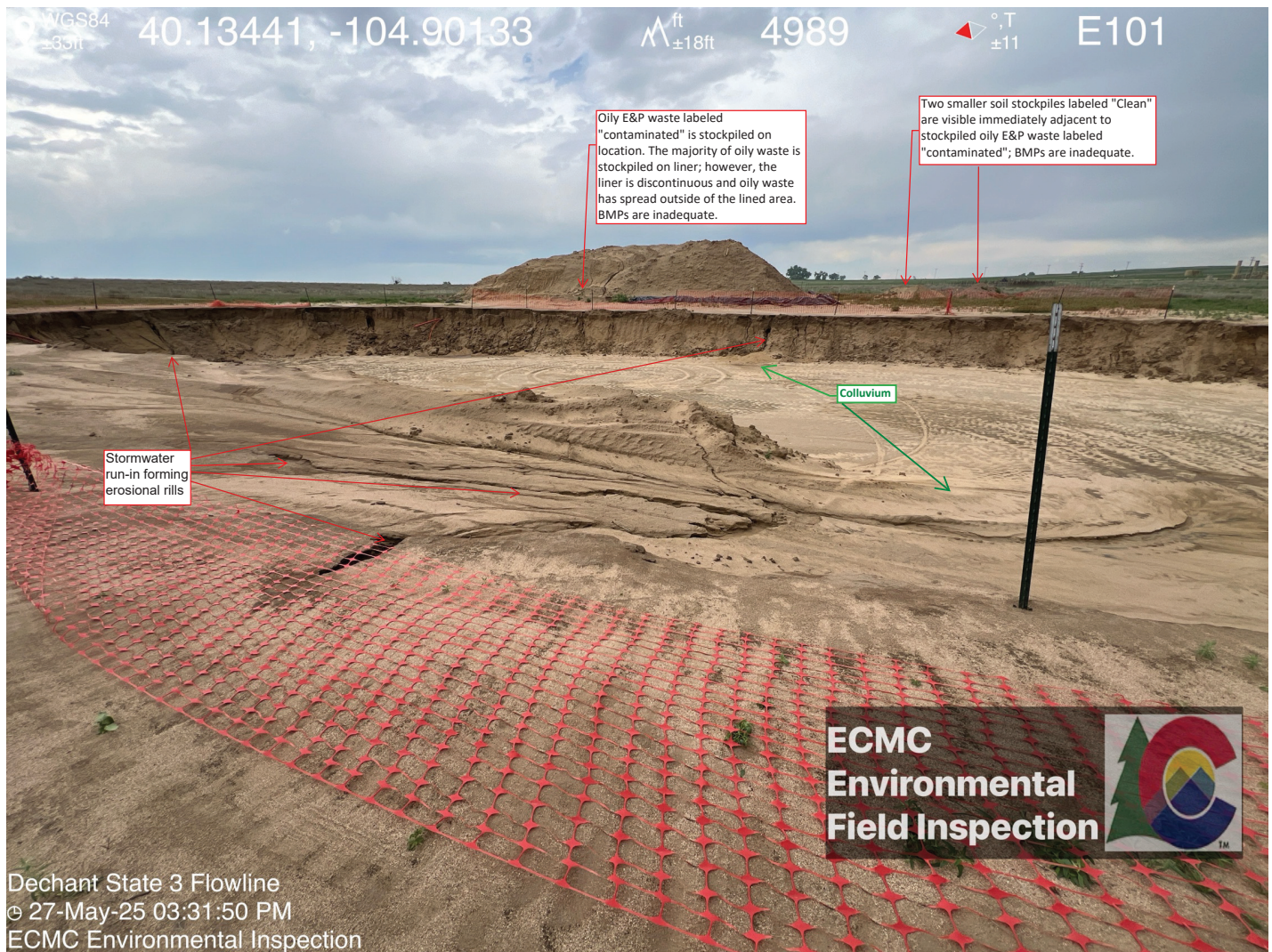


Dechant State 3 Flowline Spill (Spill ID 487984) - Site overview looking NE.



- Stormwater run-in to the open excavation has resulted in rill erosion, sidewall destabilization and transport and accumulation of sediment (**colluvium**) within the open excavation.
- Fencing downed - Fencing not appropriate for site conditions.

WGS84
±20ft

40.13459, -104.90132

ft
±13ft

4991

°T
±11

SW232



Dechant State 3 Flowline
© 27-May-25 03:32:59 PM
ECMC Environmental Inspection

- Weeds/debris
- E&P waste stockpile with inadequate BMPs.
- No fencing installed around stockpiled E&P waste

WGS84
±32ft

40.13463, -104.90113

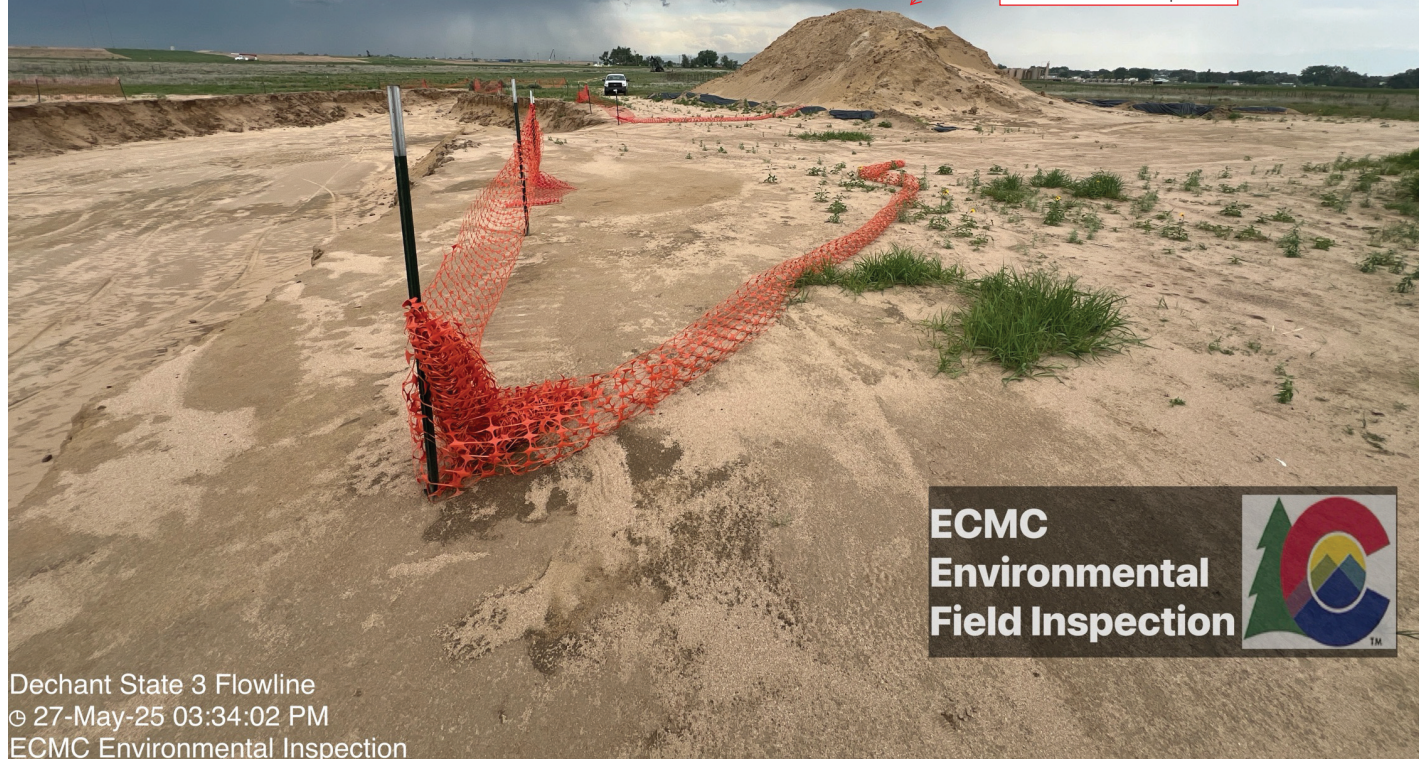
ft
±20ft

4991

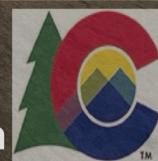
°T
±11

SW218

Oily E&P waste labeled "contaminated" is stockpiled in a second area on location. The majority of oily waste is stockpiled on liner; however, the perimeter berm surrounding the stockpile has been driven over and oily waste has spilled and spread outside of the lined area. BMPs are inadequate.

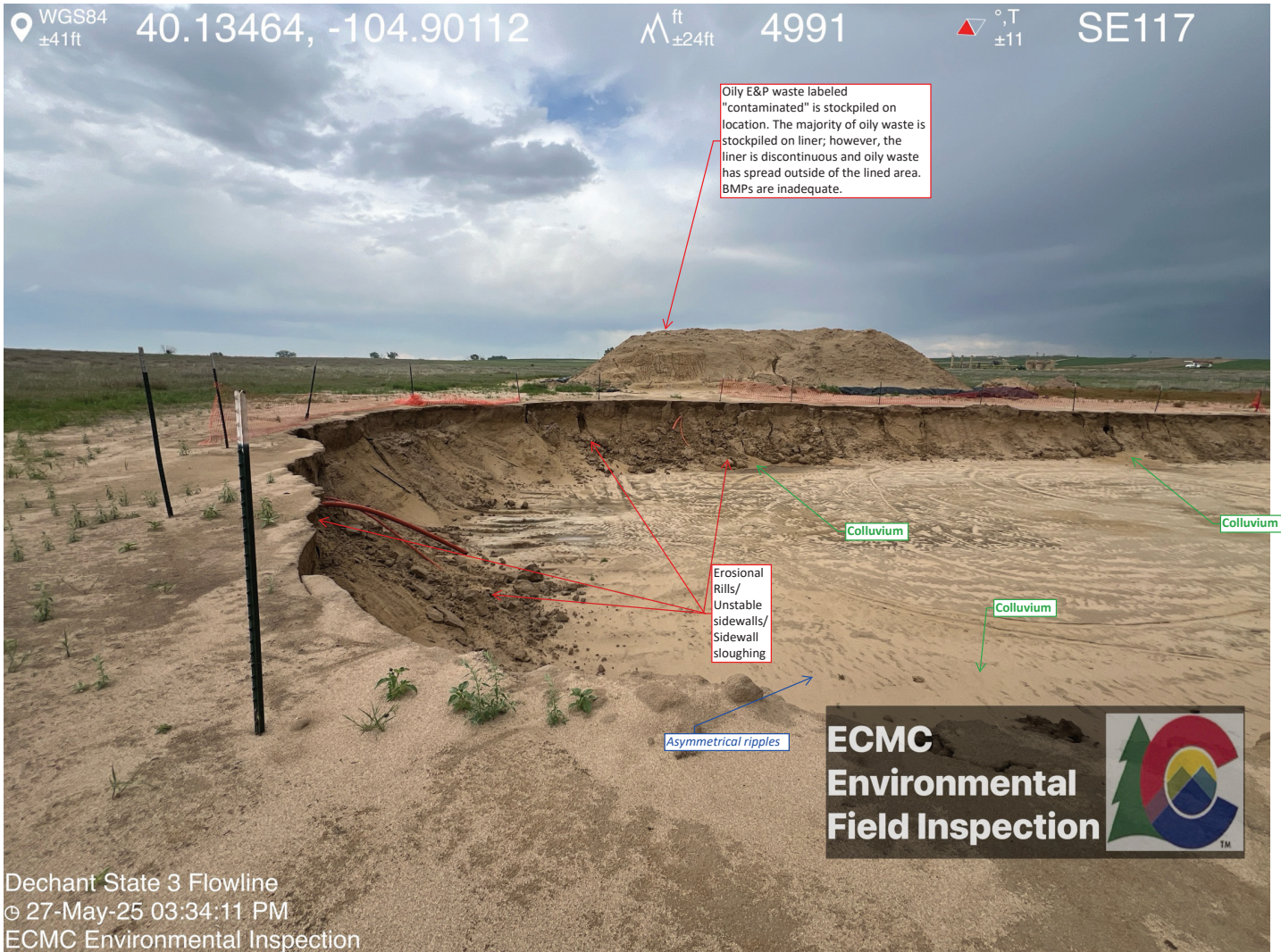


ECMC
Environmental
Field Inspection



Dechant State 3 Flowline
© 27-May-25 03:34:02 PM
ECMC Environmental Inspection

-Downed fencing - Fencing not appropriate for site conditions.



-Weeds

-Wind erosion and stormwater run-in to the open excavation has resulted in rill erosion, sidewall destabilization and collapse, and transport and accumulation of sediment(**colluvium**) within the open excavation.

-Fencing downed - Fencing not appropriate for site conditions.

-*Asymmetrical ripples indicating soil has been transported across the excavation floor by wind.*

WGS84
±17ft

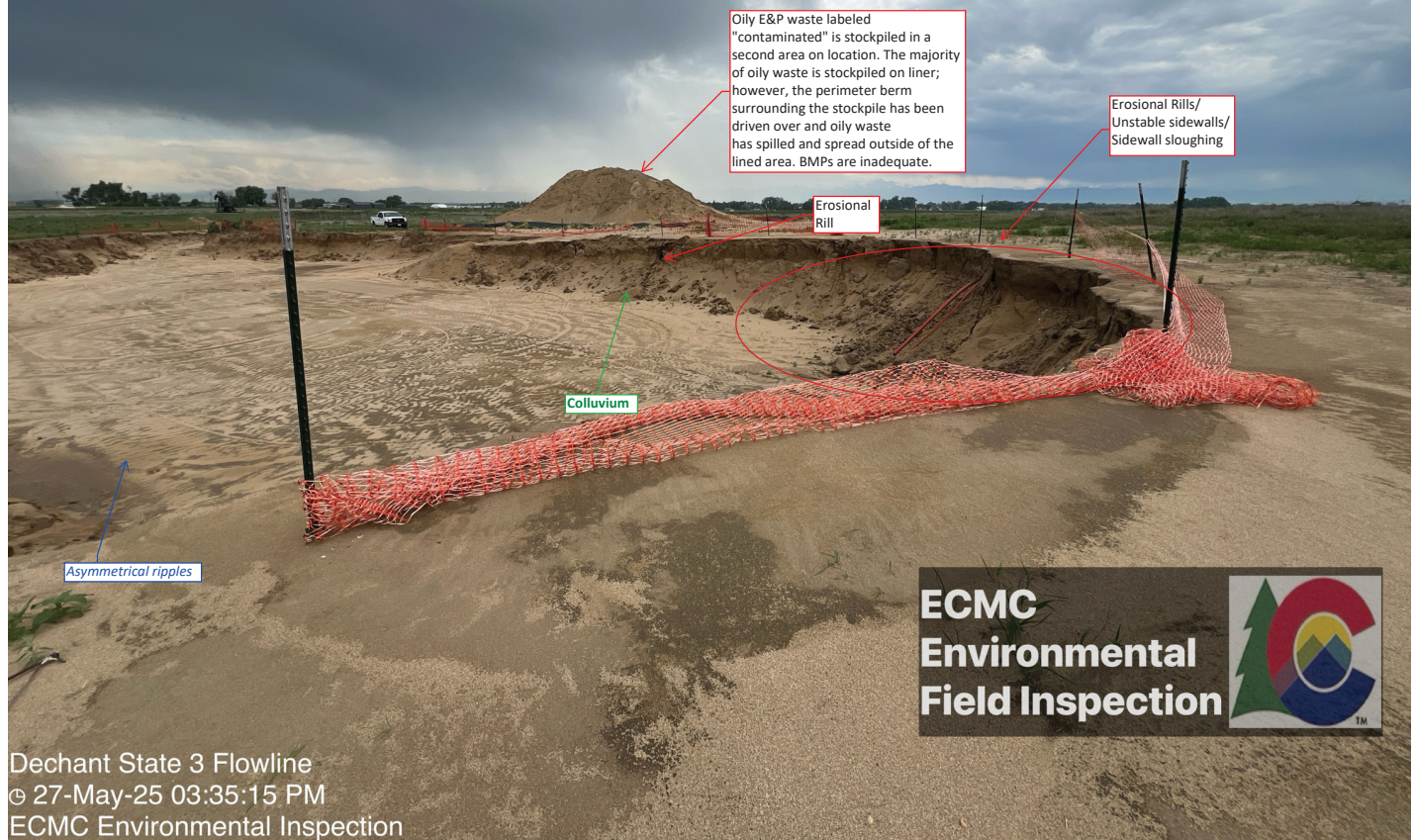
40.13457, -104.90082

ft
±13ft

4991

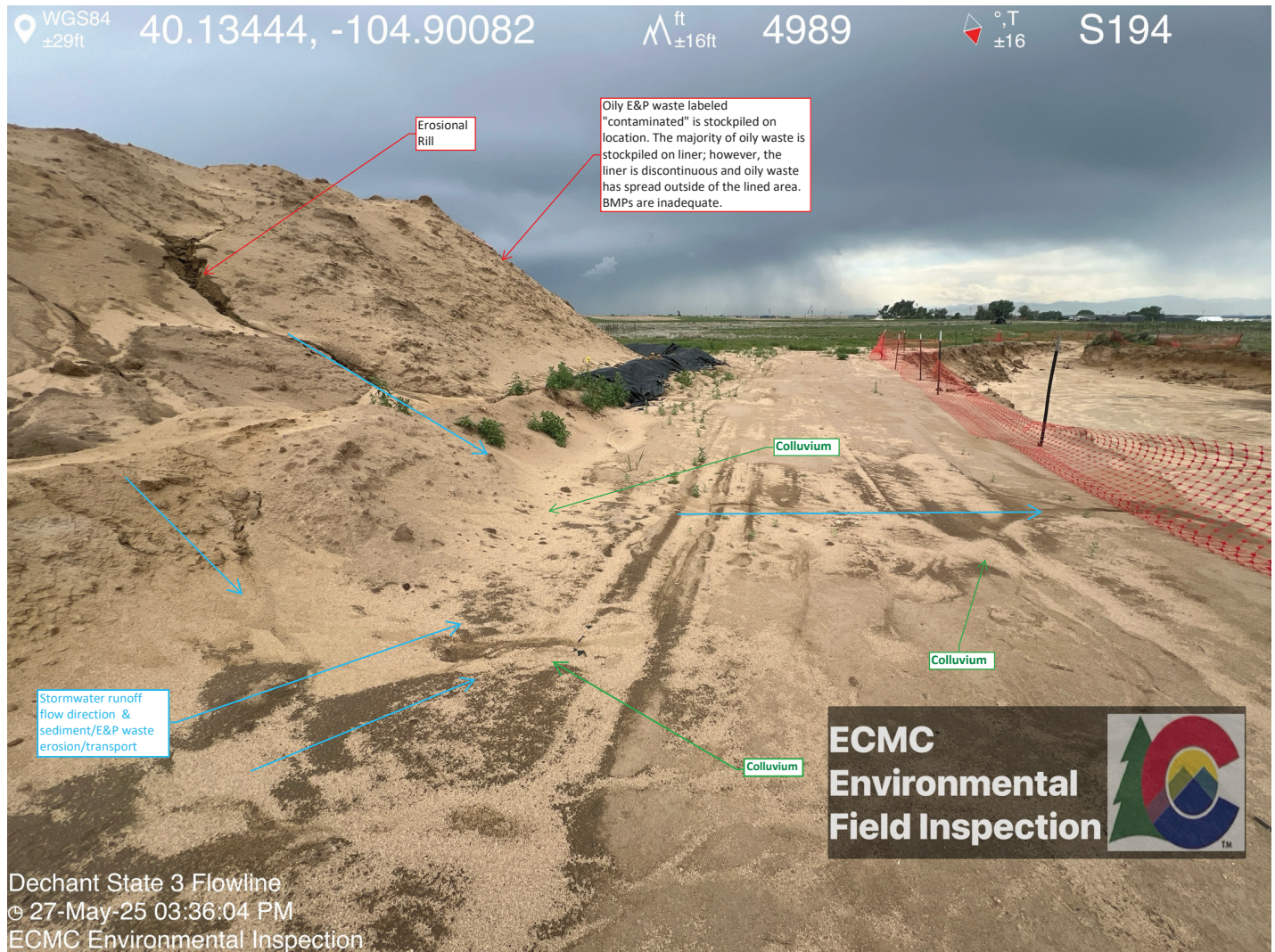
°T
±11

W265



Dechant State 3 Flowline
© 27-May-25 03:35:15 PM
ECMC Environmental Inspection

- Fencing downed - Fencing not appropriate for site conditions.
- Stormwater run-in to the open excavation has resulted in rill erosion, sidewall destabilization and collapse, and transport and accumulation of sediment (**colluvium**) within the open excavation.
- Asymmetrical ripples indicating soil has been transported across the excavation floor by wind.



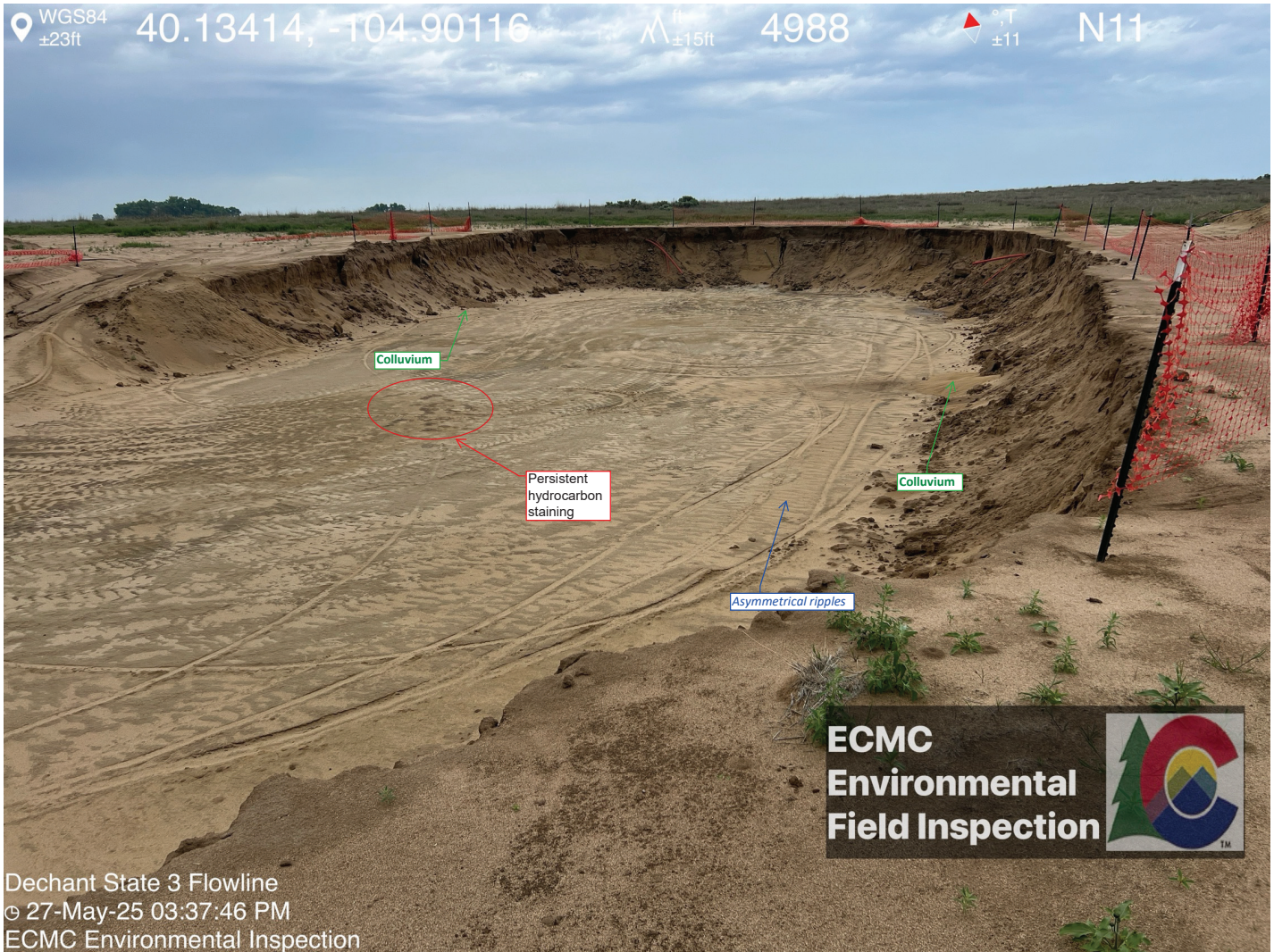
- E&P waste stockpile BMPs are inadequate - Wind erosion and stormwater runoff have transported sediment and E&P waste offsite and throughout the location/into the open excavation.
- E&P waste stockpile is showing signs of erosion and sediment transport/deposition on top and outside of containment
- Weeds
- Fencing downed - Fencing not appropriate for site conditions.

WGS84 40.13437, -104.90086 Δ ± 14 ft ± 19 ft 4990 \triangle ± 11 °,T SE118



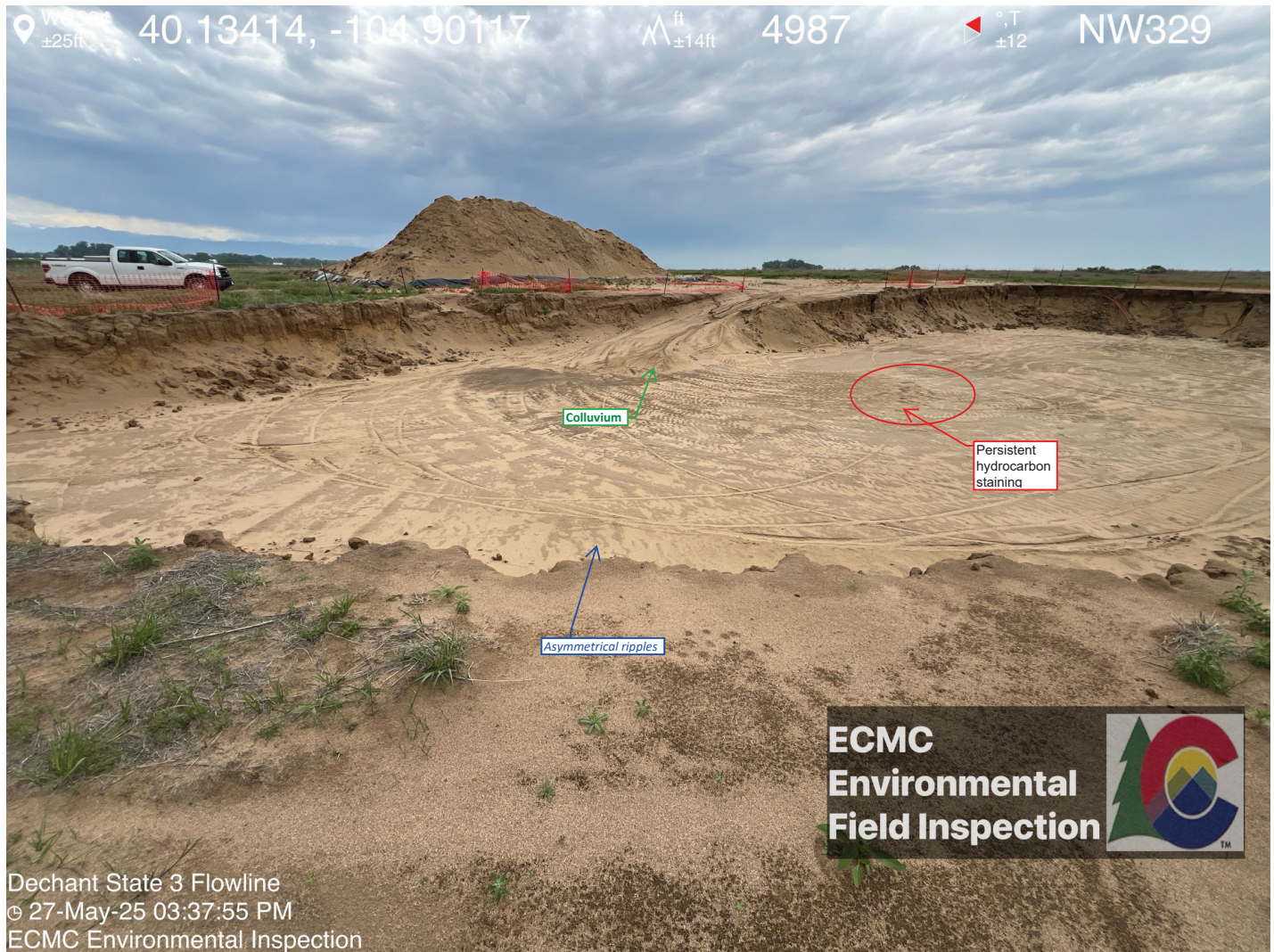
Dechant State 3 Flowline
⌚ 27-May-25 03:36:42 PM
ECMC Environmental Inspection

- E&P waste stockpile BMPs are inadequate - Wind erosion and stormwater runoff have transported sediment and E&P waste offsite and throughout the location/into the open excavation.
- E&P waste stockpile is showing signs of erosion and sediment transport/deposition on top and outside of containment
- Weeds



Dechant State 3 Flowline
© 27-May-25 03:37:46 PM
ECMC Environmental Inspection

- Weeds
- Fencing downed - Fencing not appropriate for site conditions.
- Wind erosion and stormwater run-in to the open excavation has resulted in rill erosion, sidewall destabilization and collapse, and transport and accumulation of sediment (**colluvium**) within the open excavation.
- Asymmetrical ripples indicating soil has been transported across the excavation floor by wind.*



- Fencing downed - Fencing not appropriate for site conditions.
- Wind erosion and stormwater run-in to the open excavation has resulted in rill erosion, sidewall destabilization and collapse, and transport and accumulation of sediment (**colluvium**) within the open excavation.
- Asymmetrical ripples indicating soil has been transported across the excavation floor by wind.

W284 40.13299, -104.90284 Δ $\frac{\text{ft}}{\pm 19\text{ft}}$ 4987 $\frac{^\circ\text{T}}{\pm 12}$ W284



**ECMC
Environmental
Field Inspection**



Dechant State 3 Flowline
⌚ 27-May-25 03:44:30 PM
ECMC Environmental Inspection

Dechant State 3 Wellhead (API 05-123-07997)
- No fencing installed.
- No signage present.