



Crestone Peak Resources, LLC

WILDLIFE PROTECTION PLAN

FOR

Bennett D Pad

Prepared For:



1120 Lincoln Street, Suite 801
Denver, CO 80203
www.ecmc.state.co.us

Prepared By:



1720 South Bellaire Street, Suite 400
Denver, CO 80222
www.rpgres.com

Date Prepared: October 2024

Table of Contents

1. INTRODUCTION	3
2. SITE DESCRIPTION	3
3. OPERATING REQUIREMENTS	3
4. GENERAL PROTECTION MEASURES & BMPs	6
5. ENVIRONMENTAL SITE ASSESSMENT	7
5.1. Eagles	7
5.2. Burrowing Owls	7
5.3. Other Raptors	7
5.4. Migratory Birds	8
5.5. Threatened, Endangered, and Candidate Species	8
5.6. Wetlands, Waters of the U.S., and Floodplains	8
5.7. High Priority Habitats	9
5.8. Safety or Other Concerns	9
6. SUMMARY	9
PHOTOS	10
LITERATURE CITED	13

APPENDIX A – Environmental Site Assessment Results

APPENDIX B – Environmental Site Map

APPENDIX C – Seed Mix and Application Rates

1. INTRODUCTION

This Wildlife Protection Plan (WPP) was prepared by RPG Resources (RPG), on behalf of Crestone Peak Resources Operating, LLC (Civitas Resources, Inc.; hereafter Crestone), for the proposed Bennett D Pad (Site). This plan was prepared to adhere to the Colorado Energy & Carbon Management Commission's (ECMC) updated rules pursuant to 304.c.(17) & 1201.a for Oil and Gas Locations located outside High Priority Habitats. The WPP serves as a framework for wildlife protection and a communication tool to foster cooperative relationships between Crestone and its stakeholders. Implementation of this plan will serve to avoid or minimize adverse effects to wildlife populations, their associated habitats, and respective productivity levels in anticipation of the development of Crestone oil and gas resources.

This WPP addresses Crestone's plans to comply with all applicable operating requirements and includes a site-specific environmental site assessment. Additional measures may be implemented based on any new environmental constraints that arise or site-specific recommendations.

2. SITE DESCRIPTION

The Site boundaries are defined as the limits of disturbance (LOD) for the proposed pad and access road. The Site is located in Section 34 of Township 3 South, Range 64 West in Adams County, Colorado. It is in the Western Great Plains Range and Irrigated Region Land Resource Region (LRR) of the Central High Plains, Southern Part Major Land Resource Region (MLRA; NRCS 2006). The proposed location is a pad expansion, and the surrounding land type is rangeland.

3. OPERATING REQUIREMENTS

Below is a review of the operating requirements described in Rule 1202 and Crestone's plans to adhere to those which are applicable to the Site. Crestone's contractors will also comply with all applicable operating requirements.

a. *The operating requirements identified in Rule 1202.a apply to Oil and Gas Operations statewide unless the Operator obtains a signed waiver from Colorado Parks and Wildlife (CPW) and the Director or Commission approves a Form 4, Sundry Notice or Form 2A documenting the relief.*

(1) *In black bear habitat, Operators will install and utilize bear-proof dumpsters and trash receptacles for food-related trash at all facilities that generate trash.*

The Site is not located within black bear habitat.

(2) *Operators will disinfect water suction hoses and water transportation Tanks withdrawing from or discharging into surface waters (other than contained Pits) used previously in another river, intermittent or perennial stream, lake, pond, or wetland and discard rinse water in an approved disposal facility. Disinfection practices will be repeated prior to completing work and before moving to the next waterbody. Disinfection will be performed by scrubbing and pre-rinsing equipment away from water bodies to remove all mud, plants, and organic materials and then by implementing one of the following practices:*

- A. *Spray/soak equipment with a CPW-approved disinfectant solution capable of killing whirling disease spores and other aquatic nuisance species defined by CPW; or*
- B. *Spray/soak equipment with water greater than 140° Fahrenheit for at least 10 minutes. All equipment and any compartments they contain will be completely drained and dried between each use.*

Crestone will not withdraw from or discharge into any surface waters associated with oil and gas operations. Water for this project will be sourced from a third-party lay flat distribution system, which is permitted and operated separately by the third party.

- (3) *At new and existing Oil and Gas Locations, Operators will not situate new staging, refueling, or Chemical storage areas within 500 feet of the Ordinary High Water Mark (“OHWM”) of any river, perennial or intermittent stream, lake, pond, or wetland.*

There are three National Hydrography Dataset (NHD)- National Wetland Inventory (NWI)- mapped aquatic features within 500 feet of the Site, however, only two features were field verified present at the time of the survey. Feature one, an NWI-mapped wetland, is mapped within the western edge of the WPS, however, the boundaries determined in the field approximate the wetland 54-feet west of the WPS. Feature two is a stormwater pond with wetland fringe, is located approximately 150-feet west of the WPS. The pond has an ordinary high-water mark (OHWM) and fringe wetlands along the bed and bank. A drainage feature moves water downslope, from north to south, and into the pond. Feature three is an NHD-mapped intermittent lake/pond and NWI-Mapped wetland and is located approximately 40-feet south of the WPS. This feature was field verified not present at the time of the survey. A waiver request is in process at the time of the submittal.

- (4) *To prevent access by wildlife, including birds and bats, Operators will fence and net or install other CPW-approved exclusion devices on new Drilling Pits, Production Pits, and other Pits associated with Oil and Gas Operations that are intended to contain Fluids.*
 - A. *Such fencing and netting or other CPW-approved exclusion device will be installed within 5 days after the cessation of active drilling and completion activities and maintained until the Pit is removed from service and dried or closed pursuant to the Commission’s 900 Series Rules.*
 - B. *The Director may require an operator to fence and net or install other CPW-approved exclusion devices on an existing Pit if the Director determines that the installation is necessary and reasonable to protect Wildlife Resources based on the analysis required by Rule 909.j, or other information that demonstrates additional protections for Wildlife Resources are appropriate.*
 - C. *Operators will properly maintain and repair all fences, nets, and CPW-approved exclusion devices required by this Rule 1202.a.(4).*

The Site will not include Drilling Pits, Production Pits, or other Pits associated with Oil and Gas Operations.

(5) *For trenches that are left open for more than 5 consecutive days during construction of Pipelines regulated pursuant to the Commission’s 1100 Series Rules, Operators will install wildlife escape ramps at a minimum of one ramp per 1/4 mile of trench.*

If a trench is left open for more than 5 consecutive days during pipeline construction, Crestone will install wildlife escape ramps at a minimum of one ramp per ¼ mile of trench.

(6) *When conducting interim and final Reclamation pursuant to Rules 1003 and 1004, Operators will use CPW-recommended seed mixes for Reclamation when consistent with the Surface Owner’s approval and any local soil conservation district requirements.*

The Site is not located within sensitive wildlife HPH, so Crestone will comply with local requirements regarding the most appropriate seed mix (see Appendix C for details).

(7) *Operators will use CPW-recommended fence designs when consistent with the Surface Owner’s approval and any Relevant Local Government requirements.*

Fence design at this location will be based on county regulations and security requirements. The Site is not located within sensitive wildlife HPH.

(8) *Operators will conduct all vegetation removal necessary for Oil and Gas Operations outside of the nesting season for migratory birds (April 1 to August 31). For any vegetation removal that must be scheduled between April 1 to August 31, Operators may implement appropriate hazing or other exclusion measures prior to April 1 to avoid take of migratory birds. If hazing or other exclusion measures are not implemented,¹ Operators will conduct pre-construction nesting migratory bird surveys within the approved disturbance area prior to any vegetation removal during the nesting season. If active nests are located, Operators will provide work zone buffers around active nests.*

If construction or other earth-moving activities begin within the recognized migratory bird breeding season of April 1 through August 31, Crestone will conduct migratory bird surveys before construction is scheduled. Should any nests be identified at that time, Crestone will provide work zone buffers around active nest sites.

(9) *Operators will treat Drilling Pits, Production Pits, and any other Pit associated with Oil and Gas Operations containing water that provides a medium for breeding mosquitoes with Bti (*Bacillus thuringiensis v. israelensis*) or take other effective action to control mosquito larvae that may spread West Nile virus to Wildlife Resources. Such treatment will be conducted in a manner which will not adversely affect aquatic Wildlife Resources.*

The Site will not include Drilling Pits, Production Pits, or other Pits associated with Oil and Gas Operations.

(10) *Operators will employ the following minimum Best Management Practices on new Oil and Gas Locations with a Working Pad Surface located between 500 feet and 1000 feet hydraulically upgradient from a High Priority Habitat identified in Rule 1202.c.(1). Q–S:*

¹ Although this language regarding hazing measures is included within ECMC’s 1200 Series Rules, more recent guidance provided directly by ECMC commissioners included a request to avoid any hazing measures.

- A. *Contain Flowback and Stimulation Fluids in Tanks that are placed on a Working Pad Surface in an area with downgradient perimeter berming;*
- B. *Construct lined berms or other lined containment devices pursuant to Rule 603.o around any new crude oil, condensate, and produced water storage Tanks that are installed after January 15, 2021;*
- C. *Inspect the Oil and Location on a daily basis, unless the approved Form 2A provides for different inspection frequency or alternative method of compliance;*
- D. *Maintain adequate Spill response equipment at the Oil and Gas Location during drilling and completion operations; and*
- E. *Not construct or utilize any Pits, except that Operators may continue to utilize existing Pits that were properly permitted, constructed, operated, and maintained in compliance prior to January 15, 2021.*

The Site is not located between 500 feet and 1000 feet hydraulically upgradient from any High Priority Habitat identified in Rule 1202.c.(1). Q-S.

- b. *Operators will bore, rather than trench, Flowline and utility crossings of perennial streams identified as aquatic High Priority Habitat unless the Operator obtains a signed waiver from CPW and the Director or Commission approves a Form 4 or Form 2A documenting the relief. When installing culverts or bridges, such structures will not impact or prevent the passage of fish unless otherwise directed by CPW.*

Flowlines and utilities associated with the Site will not cross any perennial streams identified as aquatic High Priority Habitat.

Rules 1202.c and 1202.d describe operating requirements for proposed Oil and Gas Operations that are located within High Priority Habitats. This plan addresses proposed locations that are located outside of High Priority Habitat and, therefore, these rules do not apply to any locations for which this plan is provided.

4. GENERAL PROTECTION MEASURES & BMPs

Crestone strives to avoid and minimize impacts to wildlife by incorporating general and site-specific guidance into development plans and project design. In addition to the above-discussed standard operating requirements, additional wildlife protection measures are considered and implemented as appropriate for each project.

When possible, seasonal avoidance of important breeding, nesting, and winter habitats is the primary protection measure to reduce oil and gas development impacts on wildlife populations, productivity, and habitat use. Consultation with CPW and/or other wildlife agencies may be initiated to determine which other site-specific protection measures, if any, should be included in each project. Data collected during preliminary survey efforts is considered during project planning and design, and subsequent follow-up surveys and/or monitoring efforts are scheduled as needed. Protection measures are not limited to those

identified in wildlife plans, and Crestone recognizes the nature of fluctuating wildlife conditions and remains adaptable to new wildlife constraints that may arise.

Additionally, Crestone will implement the following general wildlife BMPs:

- Ensure all personnel and contractors are aware of and adhere to applicable wildlife protection measures and BMPs;
- Personnel and contractors will not harm any wildlife observed on site and will maintain recommended buffer distances related to wildlife;
- Personnel and contractors will report any wildlife concerns, including the discovery of injured or orphaned wildlife, to on-site management and applicable EHSR personnel;
- Consult CPW and/or other applicable agencies/personnel, upon the discovery of new wildlife constraints, as needed;
- Use qualified third-party contractors for wildlife surveys, monitoring, and other consultation purposes; and
- Document any wildlife-related issues or changes.

5. ENVIRONMENTAL SITE ASSESSMENT

RPG conducted a comprehensive Environmental Site Assessment (ESA) of the proposed Site and provided recommendations based on site-specific observations. RPG's considerations included, but were not limited to, resources protected under the Bald and Golden Eagle Protection Act (BGEPA), Migratory Bird Treaty Act (MBTA), Endangered Species Act, Colorado Nongame, Endangered, or Threatened Species Conservation Act, and the Clean Water Act (CWA). The ESA included a desktop review of aerial imagery, agency-mapped sensitive natural resources, and a site-specific U.S. Fish and Wildlife Service (USFWS) Information for Planning and Consultation (IPaC) report. Following the desktop review, RPG conducted field surveys on July 31, 2024 and September 19, 2024 to assess the potential for other protected or sensitive natural resources to be impacted by operations. Detailed results of the ESA are provided in Appendix A and an Environmental Site Map is provided in Appendix B.

5.1. Eagles

There is no suitable nesting habitat for bald eagles (*Haliaeetus leucocephalus*) or golden eagles (*Aquila chrysaetos*) within ½ mile of the Site, and no eagle activity was observed during the survey.

There are no CPW-mapped bald eagle winter night roost areas within ½ mile of the Site.

No further action recommended.

5.2. Burrowing Owls

No suitable burrowing owl (*Athene cunicularia*) habitat (i.e., prairie dog town) was identified within ¼ mile of the Site, however, burrowing owls were observed approximately 0.42 miles west of the site, further than the CPW-recommended species-specific buffer.

If construction begins between March 15 and October 31, a burrowing owl habitat survey is recommended by qualified biologists prior to construction to confirm no new habitat has been

established. If new habitat is observed, burrowing owl surveys will be conducted in accordance with CPW-recommended protocol, and CPW will be consulted if owls are determined to be present.

5.3. Other Raptors

Three inactive non-eagle raptor nests were observed within ½ mile of the Site. One nest is located approximately 365 feet southwest of the Site, a second nest is located approximately 700 feet west from the Site, and a third nest is located approximately 700 feet east of the Site.

If construction begins between February 1 and July 31, additional raptor nesting surveys are recommended. If active raptor nests are observed within CPW’s recommended species-specific buffers, consultation with CPW is recommended to determine appropriate mitigation measures.

5.4. Migratory Birds

No migratory bird nests or nesting activity were observed; however, suitable nesting habitat, including surface topography, vegetation, and artificial structures, is present at and immediately surrounding the Site.

If construction begins between April 1 through August 31, migratory bird nesting surveys are recommended. If MBTA-protected active nests are found, Crestone will provide work zone buffers around them while they remain active.

5.5. Threatened, Endangered, and Candidate Species

The IPaC report included six (6) federally listed threatened, endangered, or candidate species that have potential to exist within or in the immediate vicinity of the Site. These species include: piping plover (*Charadrius melodus*), whooping crane (*Grus americana*), pallid sturgeon (*Scaphirhynchus albus*), Ute ladies'-tresses (*Spiranthes diluvialis*), western prairie fringed orchid (*Platanthera praeclara*), and monarch butterfly² (*Danaus plexippus*). No suitable habitat for any of these species was identified at the Site.

The Colorado state-listed T&E species that have potential to occur in the same area as the Site are the burrowing owl and the Preble’s meadow jumping mouse (PMJM). The burrowing owl is discussed above in Section 5.2. No suitable habitat for the PMJM was observed at the Site.

No further action is recommended.

5.6. Wetlands, Waters of the U.S., and Floodplains

There are three National Hydrography Dataset (NHD)- National Wetland Inventory (NWI)- mapped aquatic features within 500 feet of the Site, however, only two features were field verified present at the time of the survey. Feature one, an NWI-mapped wetland, is mapped within the western edge of the WPS, however, the boundaries determined in the field approximate the wetland 54-feet west of the WPS. Feature two is a stormwater pond with wetland fringe, is located approximately 150-feet west of the WPS.

² The monarch butterfly is currently a USFWS candidate species and is not yet listed as threatened or endangered. There are generally no section 7 requirements for candidate species; however, efforts to conserve this species and its associated habitats are strongly encouraged while an official federal listing determination is being considered.

The pond has an ordinary high-water mark (OHWM) and fringe wetlands along the bed and bank. A drainage feature moves water downslope, from north to south, and into the pond. Feature three is an NHD-mapped intermittent lake/pond and NWI-Mapped wetland and is located approximately 40-feet south of the WPS. This feature was field verified not present at the time of the survey.

No additional wetlands, water bodies, or floodplains were documented or observed within or adjacent to the Site. As a result, no impacts to any potential wetlands or waters of the U.S. are expected as a result of project activities associated with the Site.

The Site is not located within a Federal Emergency Management Agency (FEMA)-mapped 100-year floodplain.

Stormwater best management practices will be implemented (see Stormwater Plan) on the western perimeter of the Site to prevent impacts to any wetlands or waters.

5.7. High Priority Habitats

The Site is not located within any CPW-mapped High Priority Habitats.

No further action is recommended.

5.8. Safety or Other Concerns

No safety issues or other concerns were identified at the Site.

No further action is recommended.

6. SUMMARY

The Bennett D Pad is not located within any High Priority Habitats. Therefore, a Wildlife Mitigation Plan is not needed per Rule 1201.b. and this Wildlife Protection Plan fulfills the obligations of Rule 1201.a.

There is suitable nesting habitat for raptors and other migratory birds within applicable CPW-recommended species-specific buffers. Additional wildlife surveys are recommended prior to the start of construction to ensure no sensitive wildlife resources will be impacted.

Crestone and all associated contractors agree to adhere to all relevant operating requirements outlined in this WPP. In addition to the standard operating requirements, supplementary measures and protocols may be implemented in response to specific needs identified at the Site.

PHOTOS



1. From south of Site facing north.



2. From west of Site facing east.



3. From north of Site facing south.



4. From east of Site facing west.



5. From northeast of the Site facing west.



6. From northwest of the Site facing east.

LITERATURE CITED

- Colorado Natural Heritage Program. 1997+. Colorado Rare Plant Guide. www.cnhp.colostate.edu. Latest update: November 2023.
- Energy and Carbon Management Commission. 2024. Permitting Process 300 Series. Colorado Department of Natural Resources.
- Energy and Carbon Management Commission. 2024. Protection of Wildlife Resources 1200 Series. Colorado Department of Natural Resources.
- Colorado Parks and Wildlife. 2020. Colorado Parks and Wildlife's (CPW) Recommendations to Avoid and Minimize Impacts to Wildlife from Land Use Development in Colorado. Colorado Department of Natural Resources.
- Colorado Parks and Wildlife. 2020. Recommended Buffer Zones and Seasonal Restrictions for Colorado Raptors. Colorado Department of Natural Resources.
- Colorado Parks and Wildlife. Species Profiles. <https://cpw.state.co.us/learn/Pages/SpeciesProfiles.aspx>. Accessed September 2024.
- Department of the Interior: Fish and Wildlife Service. 2010. Endangered and Threatened Wildlife and Plants; Revised Critical Habitat for the Preble's Meadow Jumping Mouse in Colorado; Final Rule.
- National Resources Conservation Service. 2006. National Coordinated Major Land Resource Area (MLRA) Version 4.2. U.S. Department of Agriculture, National Soil Survey Center.
- U.S. Fish and Wildlife Service. 2016. Draft Revised Recovery Plan for the Northern Great Plains Piping Plover (*Charadrius melodus*).
- U.S. Fish and Wildlife Service. 2021. Featured Pollinator Monarch butterfly (*Danaus plexippus plexippus*). https://www.fws.gov/pollinators/features/Monarch_Butterfly.html. Accessed September 2024.
- U.S. Fish and Wildlife Service. IPaC Information for Planning and Consultation. <https://ecos.fws.gov/ipac/>. Accessed September 2024.

APPENDIX A
Environmental Site Assessment Results



ENVIRONMENTAL SITE ASSESSMENT



Project Name:	Bennett D Pad	County, State:	Adams County, CO
Report Date:	9/19/2024	Region:	DJ Basin
Inspection Date:	7/31/2024, 9/19/2024, 9/24/2024	Field Name:	Wattenberg
Inspector Name:	Miranda Roberts	Location:	S34 T3S R64W
ESA Type:	Pad Expansion	Project Lat-Long:	39.742061, -104.534070

RAPTORS

Bald and Golden Eagle Habitat:	No	Status:	CLEARED
Bald and Golden Eagle Active Nests:	No		

No bald eagle (*Haliaeetus leucocephalus*) or golden eagle (*Aquila chrysaetos*) nests or nesting activity were observed within ½ mile of the Site during the field surveys. There is no suitable eagle nesting habitat (e.g., trees and cliffs) within ½ mile of the Site.

Bald Eagle Winter Night Roost/Communal Roost:	No	Status:	CLEARED
--	----	----------------	----------------

There are no CPW-mapped bald eagle winter night roosts / communal roosts within 1/2 mile of the Site.

*Burrowing Owls and Black-Tailed Prairie Dog Habitat:	No	Status:	TEMPORARILY CLEARED
*Burrowing Owl nests:	No		

No suitable burrowing owl (*Athene cunicularia*) habitat (i.e., prairie dog town) was identified within ¼ mile of the Site, however, burrowing owls were observed approximately 0.42 miles west of the site, further than the CPW-recommended species-specific buffer.

Other Raptor Habitat:	Yes	Status:	TEMPORARILY CLEARED
Other Raptor Nests:	Yes		

Three inactive non-eagle raptor nests were observed within ½ mile of the Site. One nest is located within the working pad surface, a second nest is located approximately 217 feet east of the Site, and a third nest is located approximately 283 feet east of the Site.

OTHER BIRDS

Grouse or Prairie Chicken High Priority Habitats:	No	Status:	CLEARED
--	----	----------------	----------------

The Site is not within any grouse or prairie chicken HPHs.

Non-Raptor Migratory Bird Habitat:	Yes	Status:	TEMPORARILY CLEARED
Non-Raptor Migratory Bird Nests:	No		

Suitable non-raptor nesting habitat (e.g., surface topography and vegetation is present at and immediately surrounding the Site, however, no nests or nesting activity were observed during the field surveys.

MAMMALS

Big Game High Priority Habitats:	No	Status:	CLEARED
---	----	----------------	----------------

The Site is not located within any CPW-mapped High Priority Habitats. Not a constraint.

** Preble's Meadow Jumping Mouse (PMJM) Habitat:	No	Status:	CLEARED
---	----	----------------	----------------

There is no suitable PMJM habitat at the Site. Not a constraint.

Swift Fox Habitat:	No	Status:	CLEARED
Swift Fox Dens:	No		

The Site is not within CPW-mapped swift fox overall range, and no swift fox habitat was observed during the survey. Swift fox habitat is mapped approximately 0.50 miles south of the Site.

VEGETATION

**Ute ladies'-tresses orchid (ULTO):	No	Status:	CLEARED
---	----	----------------	----------------

There is no suitable Ute ladies'-tresses orchid habitat at the Site. Not a constraint.

Colorado State Noxious Weeds - List A,B,C:	No	Status:	CLEARED
---	----	----------------	----------------

No noxious weeds were identified at the Site. Not currently a constraint.

Current Land Use:	Rangeland and O&G	Future Land Use:	Rangeland and O&G
--------------------------	-------------------	-------------------------	-------------------



ENVIRONMENTAL SITE ASSESSMENT



AQUATIC HABITATS

Aquatic High Priority Habitats:	No	Status:	CLEARED
There are no Aquatic High Priority Habitats within 1000 feet of the Site.			
Wetlands/WOUS:	Yes	Status:	Waiver Request In Progress

There are three National Hydrography Dataset (NHD)- National Wetland Inventory (NWI)- mapped aquatic features within 500 feet of the Site, however, only two features were field verified present at the time of the survey. Feature one, an NWI-mapped wetland, is mapped within the western edge of the WPS, however, the boundaries determined in the field approximate the wetland 54-feet west of the WPS. Feature two is a stormwater pond with wetland fringe, is located approximately 150-feet west of the WPS. The pond has an ordinary high-water mark (OHWM) and fringe wetlands along the bed and bank. A drainage feature moves water downslope, from north to south, and into the pond. Feature three is an NHD-mapped intermittent lake/pond and NWI-Mapped wetland and is located approximately 40-feet south of the WPS. This feature was field verified not present at the time of the survey.

OTHER/SAFETY

Other Issues:	No	Status:	CLEARED
None.			
Safety Issues:	No	Status:	CLEARED
None.			

FORM 2A

<i>Is HPH Present (309.e(2)A)?</i>	No
<i>If NO, then Wildlife Protection Plan Needed (1201.a)?</i>	Yes
<i>If YES, then Wildlife Mitigation Plan Needed (1201.b)?</i>	No
<i>Is project in State Park or Wildlife Area (309.e(2)A)?</i>	No
<i>Is project in federally designated critical habitat (309.e(2)B)?</i>	No
<i>**Federal or *Colorado T&E Species Present (309.e(2)B)?</i>	No
<i>CPW Consultation Needed?</i>	Yes
<i>Vegetation removal scheduled April 1 to August 31 (1202.a(8))?</i>	TBD
<i>Working Pad Surface 500 to 1000' hydraulically upgradient from a HPH (1202.a(10))?</i>	No
<i>Density of O&G locations exceed 1 per square mile w/in HPH (1202.d)?</i>	No
<i>If YES, then Compensatory Mitigation Plan Needed (1203.a(1))</i>	No

FIELD DATA COLLECTED

GENERAL COMMENTS

Site Photos?	Yes	There is suitable non-eagle raptor and migratory bird nesting habitat present. Additional wildlife surveys are recommended prior to the start of construction to ensure no sensitive wildlife resources will be impacted.
Reference Area Photos?	Yes	
Updated Aerial Imagery Taken?	Yes	
Ground Control Points?	Yes	
Wetland Determination Data Form?	Yes	

Reviewed By: Russell Beam
Signature:

Title: Senior Environmental Manager

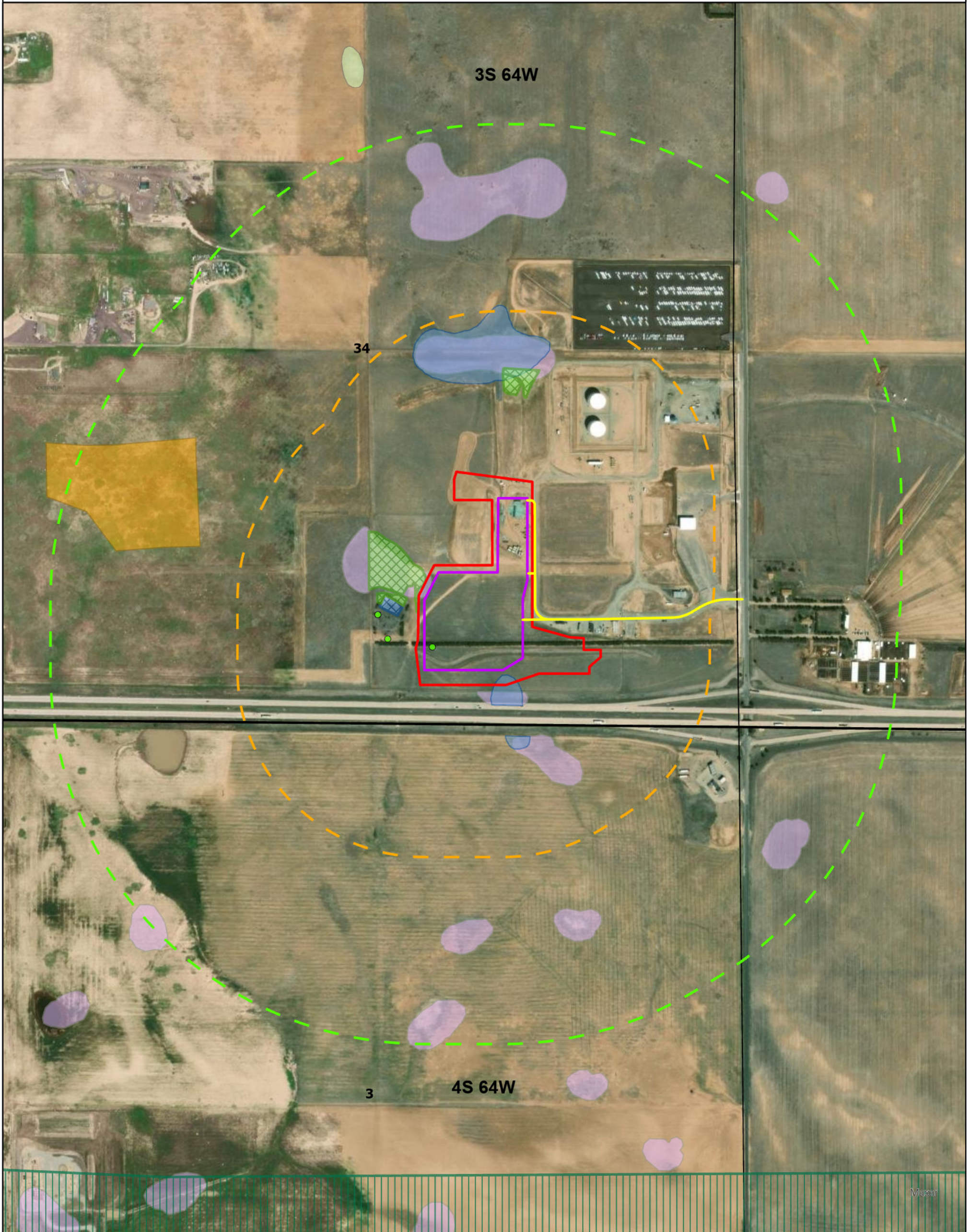
APPENDIX B
Environmental Site Map

CIVITAS RESOURCES COMPANY, LLC
 BENNETT D PAD
 SEC34 T3S R64W 6th P.M.
 ADAMS COUNTY, COLORADO

Produced for:



Produced by:



ENVIRONMENTAL SITE MAP

- | | |
|-------------------------------------|--|
| Oil & Gas Location (OGL) | Burrowing Owl Habitat |
| Working Pad Surface (WPS) | Delineated Wetland |
| Existing Access Road | Delineated Lake/Pond |
| 0.25-Mile Buffer Around WPS | NHD-Mapped Lake/Pond |
| 0.5-Mile Buffer Around WPS | NWI-Mapped Freshwater Emergent Wetland |
| Inactive Non-Eagle Raptor Nest | Wetland |
| Pronghorn Winter Concentration Area | NWI-Mapped Other Wetland |
| HPH | |

Projection: WGS 1984
 Date: 11/18/2024
 Drafted by: HJL

0 500 1,000
 Feet



1 inch equals 650 feet

APPENDIX C
Seed Mix and
Application Rates

Seed Mix and Application Rates

ADAMS COUNTY, COLORADO

SEED MIX	APPLICATION RATE (lbs/acre)
PBSI Dryland Aggressive Mix	25
(20%) Green Needlegrass, Lodorm	
(20%) Slender Wheatgrass, Native	
(20%) Western Wheatgrass, Native	
(20%) Pubescent Wheatgrass, Luna	
(20%) Intermediate Wheatgrass, Oahe/Rush	
PBSI Native Prairie Mix	15
(25%) Blue Grama	
(10%) Buffalograss	
(20%) Green Needlegrass	
(20%) Sideoats Grama	
(25%) Western Wheatgrass	
PBSI Native Sandyland Mix	15
(20%) Yellow Indiangrass	
(10%) Little Bluestem	
(10%) Indian Rice Grass	
(10%) Sideoats Grama	
(10%) Sand Lovegrass	
(10%) Prairie Sandreed	
(20%) Switchgrass	
PBSI Premium Irrig. Pasture Mix #1	25
(75%) Meadow Bromegrass, Paddock/Fleet	
(25%) Orchardgrass, Elsie/Megabite/Paiute	

Notes:

lbs/acre = pounds per acre

% = percent