



**Crestone Peak Resources Operating LLC**

**WATER PLAN**

**Bennett D Pad**

**Date Finalized: November 12, 2024**

**Crestone Peak Resources, LLC's Water Plan was developed in accordance  
with ECMC Rule 304.c.(18)**

**Overall Description of Operations**

Crestone Peak Resource, LLC’s (“CPR”) Water Plan pursuant to Rule 304.c.(18) is described herein. Water for drilling operations for the Benett D Pad will be sourced from a fresh-water hydrant from Rangeview Metropolitan District near the intersection of 6<sup>th</sup> Avenue and N. Hayesmount Road. Fresh water used for completion operations will be transported by a temporary water line (“Layflat”).

Layflat definition: Temporary, above-ground water supply line, typically 10” or 12” in diameter and typically made of synthetic rubber or similar “hose” material. They are used for the transfer of water from an identified water source to support company’s hydraulic fracturing operations.

“Facilities” associated with use of Layflat lines include the following:

- In-line pumps
- Light plants with generators
- Spools
- Secondary containment equipment
- Ramps

Equipment used for installation may include pick-up trucks, flatbed trailers, skid steer, and skid steer mounted reel winder.

Layflat lines are laid on the surface, at grade and do not require excavation. They do not require staking to secure them from movement and are placed at least 10’ from the edge of the roadway.

**Deployment and Retrieval of a Layflat Line**

A truck carrying spools of hose follows along-side a skid steer tractor. The skid steer carries and straddles the spool of Layflat line and releases the hose by the reel rolling forward. Victaulic couplings are used to assemble segments of Layflat line. The process of retrieving the Layflat line involves the same equipment and process in reverse (reel rolling backward).

Layflat lines are periodically pressure tested to assess the integrity of the materials as well as determine if there are any leak points. Any line that does not pass the periodic pressure testing is retired and replaced.

**Table of Operations and Water Source**

Phase of Operation	Source	Lat / Long of Source	Water Type	Volume
Drilling and Pad Construction	Rangeview Metropolitan District	39.725429, -104.643050	Ground Water	24,500 bbls
Completions	FRICO	39.95392778, -104.74666667	Surface Water	14.85MM bbls

**Planned Source and Volumes**

The Bennett D Pad is located within Adams County. The primary sources will be Farmers Reservoir and Irrigation Company (FRICO) and Rangeview Metropolitan District. CPR will use a combination of surface water and ground water for its drilling and completion operations.

**Primary sources:** Farmers Reservoir and Irrigation Company, Rangeview Metropolitan District and Crestone Peak Resources Operating LLC have an operating plan for Delivery of Non-Potable Water from Barr Lake and Lowry Storage, respectively. Water from the sources will be transferred via layflat to location. All water coming from these sources is fresh water. The source point for Barr Lake is located in Section 23, T1S, R66W at 39.95392778, -104.74666667, and the source point from the Lowry Storage is in Section 8, T4S, R65W at 39.63611111, -104.58338889.

Crestone estimates that the Bennett D Pad location will consume approximately 14.85MM bbls of water for completions. Daily consumption will be approximately 123,750 bbls per day.

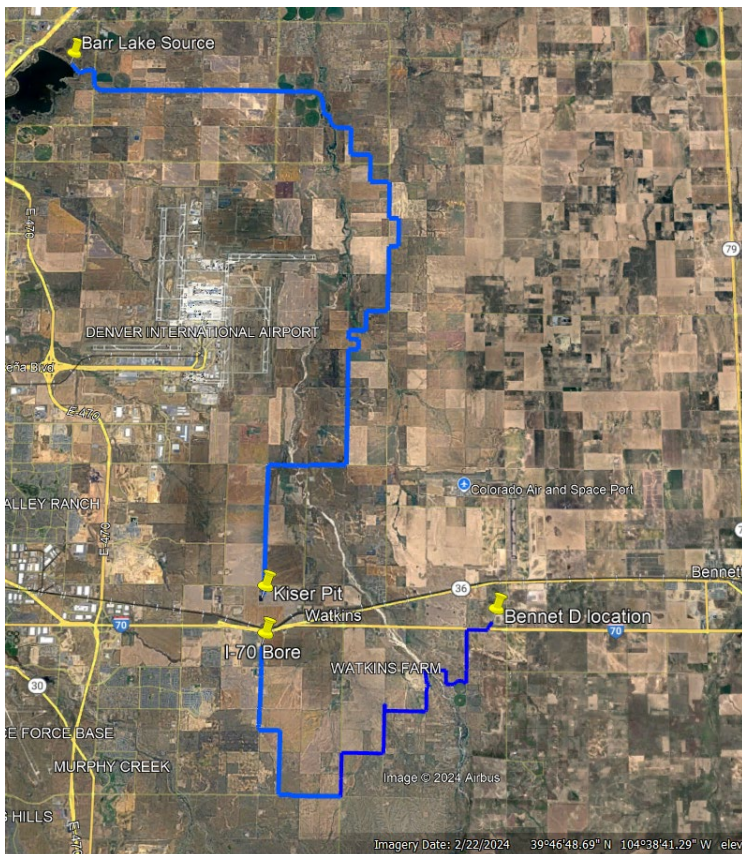
### Route Descriptions

Within Adams County, CPR has identified the following take-away point for water:

FRICO – Barr Lake, located in Section 23, T1S, R66W, Adams County, Colorado

The water is transported by Select Water Services from Barr Lake to a fresh water storage pond known as the Kiser Pit. The water is then transported from the Kiser Pit using the route below which uses an existing I-70 Bore. Crestone will work to determine the required public or private right of ways that will be needed to move water via Layflat lines from the Kiser Pit to the Bennett D location. CPR owns a water line to transfer water under I-70, Colfax, and Union Pacific Railroad.

Overview of water route: Temporary Layflat from the FRICO Barr Lake Facility (blue line):



Within Arapahoe County, CPR has identified the following take-away point for water:

Lowry Storage, located in Section 8, T4S, R65W, Arapahoe County, Colorado

The water is transported by Select Water Services from the Lowry Storage to Bennett D using the route below. Crestone will work to determine the required public or private right of ways that will be needed to move water via Layflat lines from the Lowry Storage to the Bennett D location.

