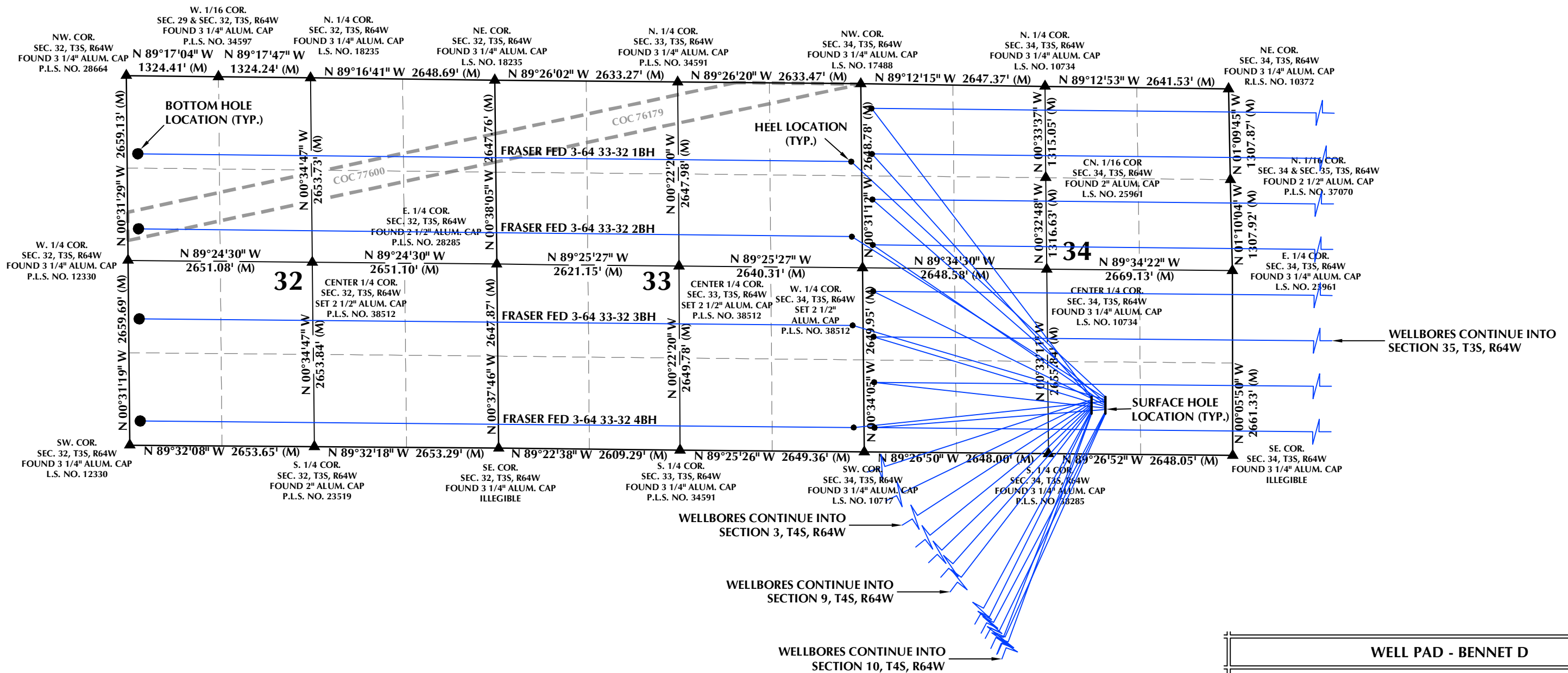


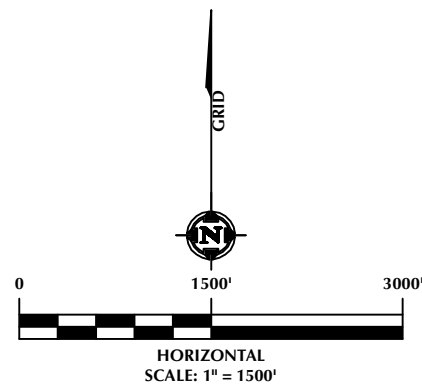
DIRECTIONAL WELL PLAT (ECMC) / MULTI-WELL PLAN (OGED)

SECTIONS 32, 33, 34, 35 & 36, T3S, R64W, 6TH P.M., ADAMS COUNTY, COLORADO & SECTIONS 3, 4, 5, 7, 8, 9, 10, 11 & 12, T4S, R64W, 6TH P.M., ARAPAHOE COUNTY, COLORADO



NOTES:

1. ▲ INDICATES SECTION CORNER.
2. ● INDICATES CALCULATED CORNER.
3. BASIS OF BEARINGS DERIVED FROM COLORADO COORDINATE SYSTEM OF 1983, NORTH ZONE.
4. ALL MEASURED DISTANCES ARE GRID. COMBINED SCALE FACTOR: .99973125 CALCULATED FROM THE W. 1/4 CORNER OF SECTION 34, T3S, R64W.
5. WELL FOOTAGES ARE MEASURED AT RIGHT ANGLES TO THE SECTION LINES.
6. THE LOCATION OF FEDERAL LEASES WITHIN THE RAILROAD ROW IS BASED ON A FIELD SURVEY OF THE MAIN RAILROAD LINE AND IS THE CENTERLINE OF THE RAILROAD ROW WITH THE BOUNDARIES OF THE RAILROAD ROW BEING 200 FEET TO EACH SIDE OF THE CENTERLINE.



609

CONSULTING, LLC

LOVELAND OFFICE
6706 North Franklin Avenue
Loveland, Colorado 80538
Phone 970-776-4331

SHERIDAN OFFICE
1095 Saberton Avenue
Sheridan, Wyoming 82801
Phone 307-674-0609

Prepared For:

CIVITAS

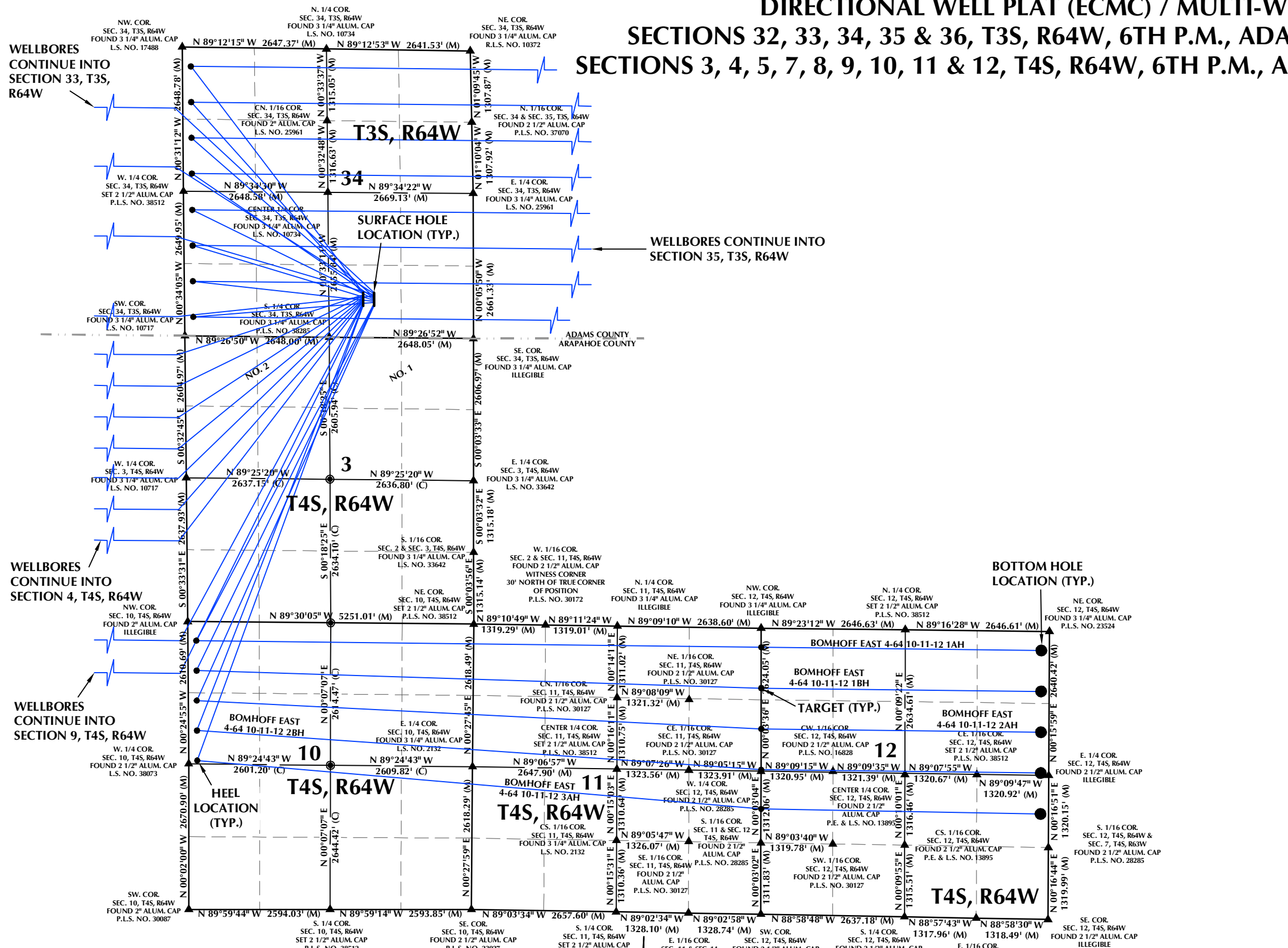
CRESTONE PEAK RESOURCES, LLC
555 17TH STREET, SUITE 3700
DENVER, CO 80202

WELL PAD - BENNET D			
DIRECTIONAL WELL PLAT (ECMC) / MULTI-WELL PLAN (OGED) FRASER FED 3-64 33-32 1BH, FRASER FED 3-64 33-32 2BH, FRASER FED 3-64 33-32 3BH, FRASER FED 3-64 33-32 4BH, BD LAND 4-64 5-4 1AH, BD LAND 4-64 5-4 1BH, BD LAND 4-64 5-4 2AH, BD LAND 4-64 5-4 2BH, BD LAND 4-64 5-4 3AH, BD LAND 4-64 5-4 3BH, BD LAND 4-64 5-4 4AH, BOMHOFF WEST 4-64 9-8-7 1AH, BOMHOFF WEST 4-64 9-8-7 1BH, TRANSPORT 3-64 34-35-36 1AH, TRANSPORT 3-64 34-35-36 1BH, TRANSPORT 3-64 34-35-36 2AH, TRANSPORT 3-64 34-35-36 2BH, TRANSPORT 3-64 34-35-36 3AH, TRANSPORT 3-64 34-35-36 3BH, TRANSPORT 3-64 34-35-36 4AH, TRANSPORT 3-64 34-35-36 4BH, BOMHOFF EAST 4-64 10-11-12 1AH, BOMHOFF EAST 4-64 10-11-12 1BH, BOMHOFF EAST 4-64 10-11-12 2AH, BOMHOFF EAST 4-64 10-11-12 2BH & BOMHOFF EAST 4-64 10-11-12 3AH			
LOCATED IN SECTIONS 32, 33, 34, 35 & 36, T3S, R64W, 6TH P.M., ADAMS COUNTY, COLORADO & SECTIONS 3, 4, 5, 7, 8, 9, 10, 11 & 12, T4S, R64W, 6TH P.M., ARAPAHOE COUNTY, COLORADO			
DRAFTED BY:	SJM	CHECKED BY:	RKF
DATE DRAFTED:	10/29/24	DATE SURVEYED:	10/11/24
REVISED:		FILE NAME:	23-182
			SHEET NO: 1A 1A OF 1

K:\CIVITAS RESOURCES\2023\0023_182_50236_T3S_R64W_SEC_36\PLATS\BENNET D\FRASER FED 3-64 33-32.dwg, 10/29/2024 4:17:17 PM, jhmonds

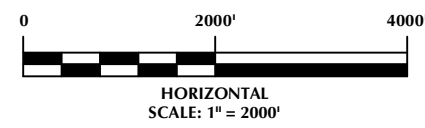
DIRECTIONAL WELL PLAT (ECMC) / MULTI-WELL PLAN (OGED)

SECTIONS 32, 33, 34, 35 & 36, T3S, R64W, 6TH P.M., ADAMS COUNTY, COLORADO & SECTIONS 3, 4, 5, 7, 8, 9, 10, 11 & 12, T4S, R64W, 6TH P.M., ARAPAHOE COUNTY, COLORADO



WELL PAD - BENNET D		
DIRECTIONAL WELL PLAT (ECMC) / MULTI-WELL PLAN (OGED) FRASER FED 3-64 33-32 1BH, FRASER FED 3-64 33-32 2BH, FRASER FED 3-64 33-32 3BH, FRASER FED 3-64 33-32 4BH, BD LAND 4-64 5-4 1AH, BD LAND 4-64 5-4 1BH, BD LAND 4-64 5-4 2AH, BD LAND 4-64 5-4 2BH, BD LAND 4-64 5-4 3AH, BD LAND 4-64 5-4 3BH, BD LAND 4-64 5-4 4AH, BOMHOFF WEST 4-64 9-8-7 1AH, BOMHOFF WEST 4-64 9-8-7 1BH, TRANSPORT 3-64 34-35-36 1AH, TRANSPORT 3-64 34-35-36 1BH, TRANSPORT 3-64 34-35-36 2AH, TRANSPORT 3-64 34-35-36 2BH, TRANSPORT 3-64 34-35-36 3AH, TRANSPORT 3-64 34-35-36 3BH, TRANSPORT 3-64 34-35-36 4AH, TRANSPORT 3-64 34-35-36 4BH, BOMHOFF EAST 4-64 10-11-12 1AH, BOMHOFF EAST 4-64 10-11-12 1BH, BOMHOFF EAST 4-64 10-11-12 2AH, BOMHOFF EAST 4-64 10-11-12 2BH & BOMHOFF EAST 4-64 10-11-12 3AH LOCATED IN SECTIONS 32, 33, 34, 35 & 36, T3S, R64W, 6TH P.M., ADAMS COUNTY, COLORADO & SECTIONS 3, 4, 5, 7, 8, 9, 10, 11 & 12, T4S, R64W, 6TH P.M., ARAPAHOE COUNTY, COLORADO		
DRAFTED BY:	SJM	CHECKED BY:
DATE DRAFTED:	10/29/24	DATE SURVEYED:
REVISED:		FILE NAME:
		23-182
		SHEET NO:
		1B
		1B OF 1

- NOTES:**
- ▲ INDICATES SECTION CORNER.
 - INDICATES CALCULATED CORNER.
 - BASIS OF BEARINGS DERIVED FROM COLORADO COORDINATE SYSTEM OF 1983, NORTH ZONE.
 - ALL MEASURED DISTANCES ARE GRID.
 - COMBINED SCALE FACTOR: .99973125 CALCULATED FROM THE W. 1/4 CORNER OF SECTION 34, T3S, R64W.
 - WELL FOOTAGES ARE MEASURED AT RIGHT ANGLES TO THE SECTION LINES.



CIVITAS CONSULTING, LLC
 LOVELAND OFFICE
 6706 North Franklin Avenue
 Loveland, Colorado 80538
 Phone 970-776-4331
 SHERIDAN OFFICE
 1095 Saberton Avenue
 Sheridan, Wyoming 82801
 Phone 307-674-0609

Prepared For:

CRESTONE PEAK RESOURCES, LLC
 555 17TH STREET, SUITE 3700
 DENVER, CO 80202

K:\CIVITAS RESOURCES\2023\1023_182_50236_T3S_R64W_SEC_36\PLATS\BENNET D\BOMHOFF EAST 4-64 10-11-12 2AH.dwg, 10/29/2024 4:14:14 PM, jadmunds

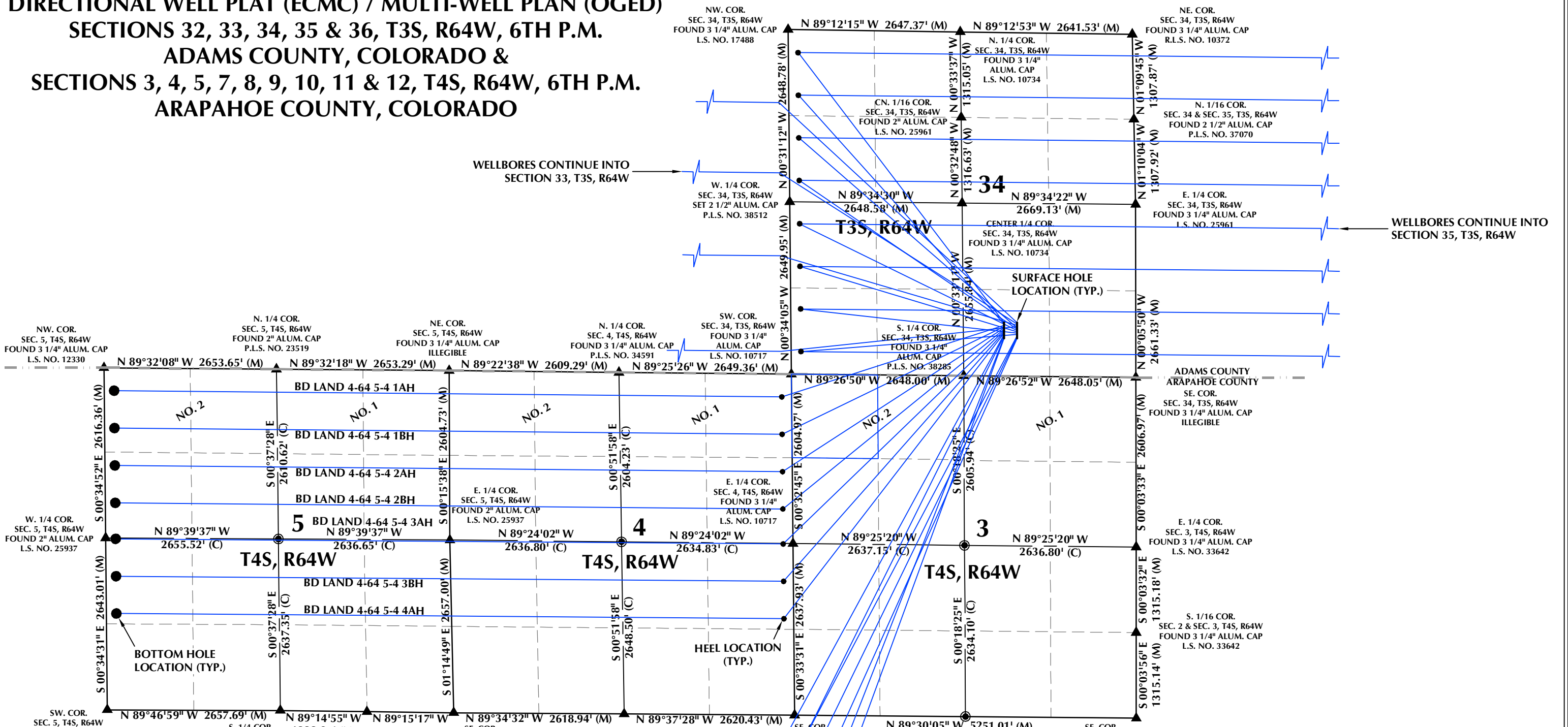
DIRECTIONAL WELL PLAT (ECMC) / MULTI-WELL PLAN (OGED)

SECTIONS 32, 33, 34, 35 & 36, T3S, R64W, 6TH P.M.

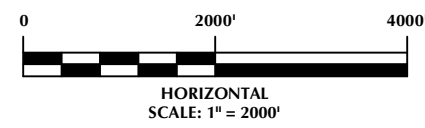
ADAMS COUNTY, COLORADO &

SECTIONS 3, 4, 5, 7, 8, 9, 10, 11 & 12, T4S, R64W, 6TH P.M.

ARAPAHOE COUNTY, COLORADO



- NOTES:**
- ▲ INDICATES SECTION CORNER.
 - INDICATES CALCULATED CORNER.
 - BASIS OF BEARINGS DERIVED FROM COLORADO COORDINATE SYSTEM OF 1983, NORTH ZONE.
 - ALL MEASURED DISTANCES ARE GRID.
 - COMBINED SCALE FACTOR: .99973125 CALCULATED FROM THE W. 1/4 CORNER OF SECTION 34, T3S, R64W.
 - WELL FOOTAGES ARE MEASURED AT RIGHT ANGLES TO THE SECTION LINES.



609 CONSULTING, LLC

LOVELAND OFFICE
6706 North Franklin Avenue
Loveland, Colorado 80538
Phone 970-776-4331

SHERIDAN OFFICE
1095 Saberton Avenue
Sheridan, Wyoming 82801
Phone 307-674-0609

Prepared For:

CIVITAS
CRESTONE PEAK RESOURCES, LLC
555 17TH STREET, SUITE 3700
DENVER, CO 80202

WELL PAD - BENNET D			
DIRECTIONAL WELL PLAT (ECMC) / MULTI-WELL PLAN (OGED) FRASER FED 3-64 33-32 1BH, FRASER FED 3-64 33-32 2BH, FRASER FED 3-64 33-32 3BH, FRASER FED 3-64 33-32 4BH, BD LAND 4-64 5-4 1AH, BD LAND 4-64 5-4 1BH, BD LAND 4-64 5-4 2AH, BD LAND 4-64 5-4 2BH, BD LAND 4-64 5-4 3AH, BD LAND 4-64 5-4 3BH, BD LAND 4-64 5-4 4AH, BOMHOFF WEST 4-64 9-8-7 1AH, BOMHOFF WEST 4-64 9-8-7 1BH, TRANSPORT 3-64 34-35-36 1AH, TRANSPORT 3-64 34-35-36 1BH, TRANSPORT 3-64 34-35-36 2AH, TRANSPORT 3-64 34-35-36 2BH, TRANSPORT 3-64 34-35-36 3AH, TRANSPORT 3-64 34-35-36 3BH, TRANSPORT 3-64 34-35-36 4AH, TRANSPORT 3-64 34-35-36 4BH, BOMHOFF EAST 4-64 10-11-12 1AH, BOMHOFF EAST 4-64 10-11-12 1BH, BOMHOFF EAST 4-64 10-11-12 2AH, BOMHOFF EAST 4-64 10-11-12 2BH & BOMHOFF EAST 4-64 10-11-12 3AH			
LOCATED IN SECTIONS 32, 33, 34, 35 & 36, T3S, R64W, 6TH P.M., ADAMS COUNTY, COLORADO & SECTIONS 3, 4, 5, 7, 8, 9, 10, 11 & 12, T4S, R64W, 6TH P.M., ARAPAHOE COUNTY, COLORADO			
DRAFTED BY:	SJM	CHECKED BY:	RKF
DATE DRAFTED:	10/29/24	DATE SURVEYED:	10/11/24
REVISED:		FILE NAME:	23-182
			SHEET NO: 1C 1C OF 1

K:\CIVITAS RESOURCES\2023\1023_182_50236_T3S_R64W_SEC_36\PLATS\BENNET DIBO LAND 4-64 5-4.dwg, 10/29/2024 4:13:28 PM, jtdmunds

WELL PAD - BENNET D

DIRECTIONAL WELL PLAT (ECMC) / MULTI-WELL PLAN (OGED)
 FRASER FED 3-64 33-32 1BH, FRASER FED 3-64 33-32 2BH,
 FRASER FED 3-64 33-32 3BH, FRASER FED 3-64 33-32 4BH,
 BD LAND 4-64 5-4 1AH, BD LAND 4-64 5-4 1BH,
 BD LAND 4-64 5-4 2AH, BD LAND 4-64 5-4 2BH,
 BD LAND 4-64 5-4 3AH, BD LAND 4-64 5-4 3BH,
 BD LAND 4-64 5-4 4AH, BOMHOFF WEST 4-64 9-8-7 1AH,
 BOMHOFF WEST 4-64 9-8-7 1BH, TRANSPORT 3-64 34-35-36 1AH,
 TRANSPORT 3-64 34-35-36 1BH, TRANSPORT 3-64 34-35-36 2AH,
 TRANSPORT 3-64 34-35-36 2BH, TRANSPORT 3-64 34-35-36 3AH,
 TRANSPORT 3-64 34-35-36 3BH, TRANSPORT 3-64 34-35-36 4AH,
 TRANSPORT 3-64 34-35-36 4BH, BOMHOFF EAST 4-64 10-11-12 1AH,
 BOMHOFF EAST 4-64 10-11-12 1BH, BOMHOFF EAST 4-64 10-11-12 2AH,
 BOMHOFF EAST 4-64 10-11-12 2BH & BOMHOFF EAST 4-64 10-11-12 3AH
 LOCATED IN SECTIONS 32, 33, 34, 35 & 36, T3S, R64W, 6TH P.M., ADAMS COUNTY, COLORADO &
 SECTIONS 3, 4, 5, 7, 8, 9, 10, 11 & 12, T4S, R64W, 6TH P.M., ARAPAHOE COUNTY, COLORADO

DRAFTED BY:	SJM	CHECKED BY:	RKF	SHEET NO:
DATE DRAFTED:	10/29/24	DATE SURVEYED:	10/11/24	1D
REVISED:		FILE NAME:	23-182	1D OF 1



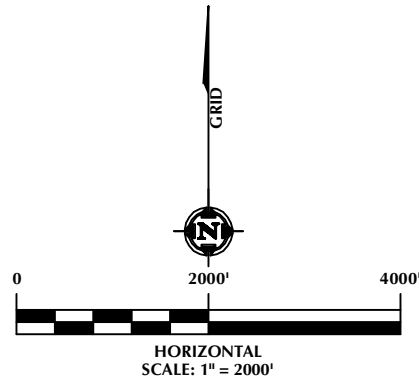
LOVELAND OFFICE
 6706 North Franklin Avenue
 Loveland, Colorado 80538
 Phone 970-776-4331

SHERIDAN OFFICE
 1095 Saberton Avenue
 Sheridan, Wyoming 82801
 Phone 307-674-0609

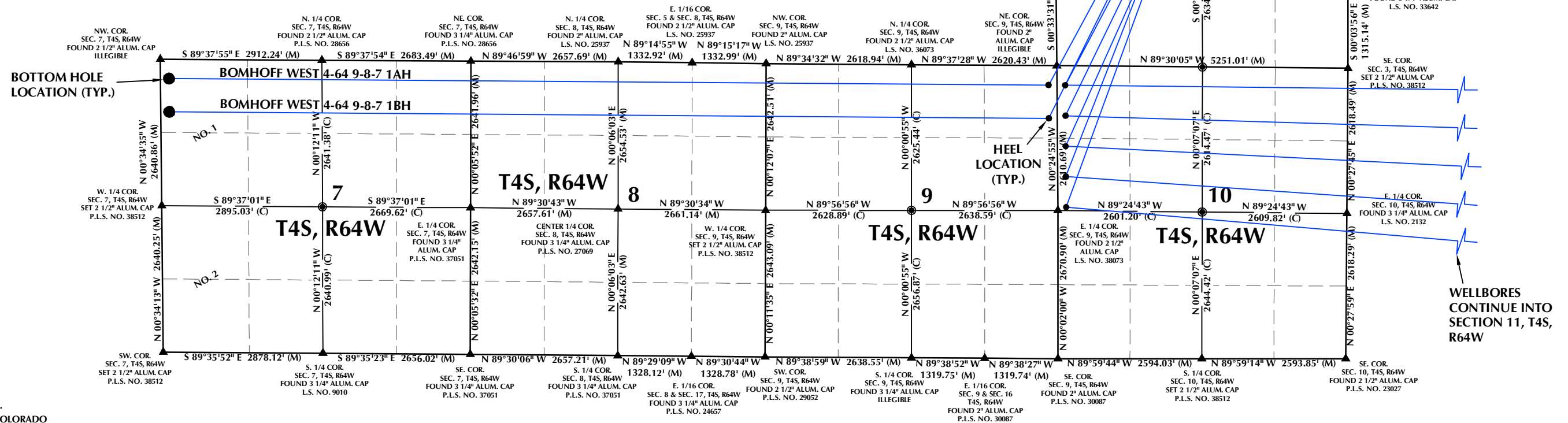
Prepared For:



CRESTONE PEAK RESOURCES, LLC
 555 17TH STREET, SUITE 3700
 DENVER, CO 80202



DIRECTIONAL WELL PLAT (ECMC) / MULTI-WELL PLAN (OGED)
SECTIONS 32, 33, 34, 35 & 36, T3S, R64W, 6TH P.M.
ADAMS COUNTY, COLORADO &
SECTIONS 3, 4, 5, 7, 8, 9, 10, 11 & 12, T4S, R64W, 6TH P.M.
ARAPAHOE COUNTY, COLORADO



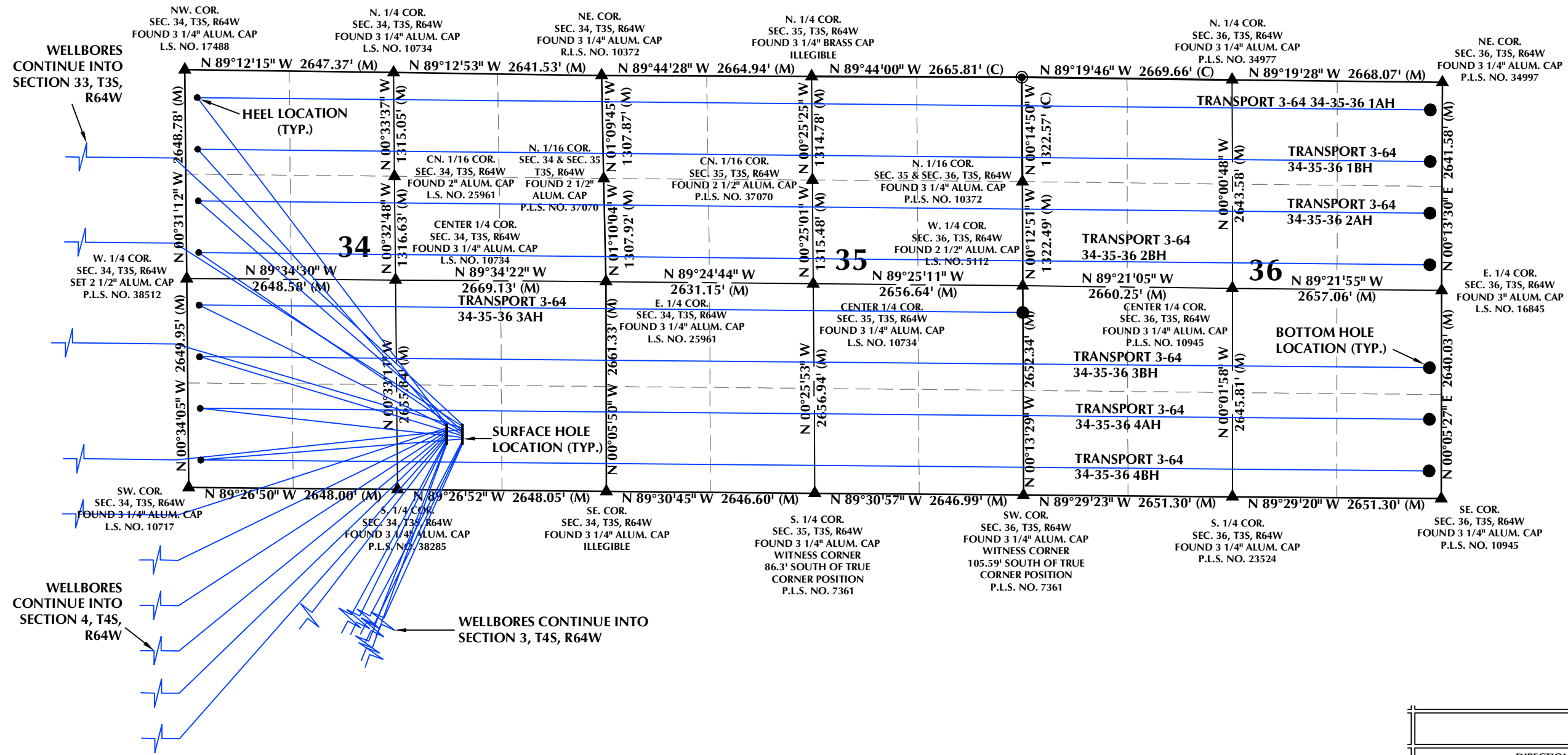
NOTES:

- ▲ INDICATES SECTION CORNER.
- INDICATES CALCULATED CORNER.
- BASIS OF BEARINGS DERIVED FROM COLORADO COORDINATE SYSTEM OF 1983, NORTH ZONE.
- ALL MEASURED DISTANCES ARE GRID. COMBINED SCALE FACTOR: .99973125 CALCULATED FROM THE W. 1/4 CORNER OF SECTION 34, T3S, R64W.
- WELL FOOTAGES ARE MEASURED AT RIGHT ANGLES TO THE SECTION LINES.

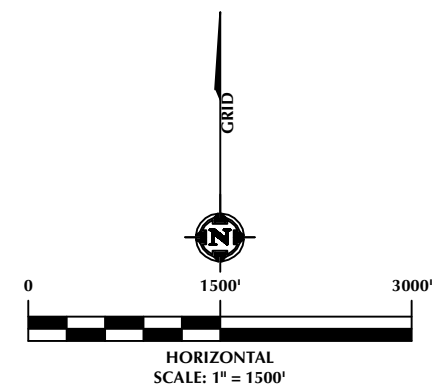
K:\CIVITAS RESOURCES\2023\1023\1023_182_50C36_T3S_R64W_SEC_36\PLATS\BENNET D\BOMHOFF WEST 4-64 9-8-7.dwg, 10/29/2024 4:16:05 PM, btdmonds

DIRECTIONAL WELL PLAT (ECMC) / MULTI-WELL PLAN (OGED)

SECTIONS 32, 33, 34, 35 & 36, T3S, R64W, 6TH P.M., ADAMS COUNTY, COLORADO & SECTIONS 3, 4, 5, 7, 8, 9, 10, 11 & 12, T4S, R64W, 6TH P.M., ARAPAHOE COUNTY, COLORADO



- NOTES:**
- ▲ INDICATES SECTION CORNER.
 - INDICATES CALCULATED CORNER.
 - BASIS OF BEARINGS DERIVED FROM COLORADO COORDINATE SYSTEM OF 1983, NORTH ZONE.
 - ALL MEASURED DISTANCES ARE GRID.
 - COMBINED SCALE FACTOR: .99973125 CALCULATED FROM THE W. 1/4 CORNER OF SECTION 34, T3S, R64W.
 - WELL FOOTAGES ARE MEASURED AT RIGHT ANGLES TO THE SECTION LINES.



609

CONSULTING, LLC

LOVELAND OFFICE
6706 North Franklin Avenue
Loveland, Colorado 80538
Phone 970-776-4331

SHERIDAN OFFICE
1095 Saberton Avenue
Sheridan, Wyoming 82801
Phone 307-674-0609

Prepared For:

CIVITAS

CRESTONE PEAK RESOURCES, LLC
555 17TH STREET, SUITE 3700
DENVER, CO 80202

WELL PAD - BENNET D			
DIRECTIONAL WELL PLAT (ECMC) / MULTI-WELL PLAN (OGED) FRASER FED 3-64 33-32 1BH, FRASER FED 3-64 33-32 2BH, FRASER FED 3-64 33-32 3BH, FRASER FED 3-64 33-32 4BH, BD LAND 4-64 5-4 1AH, BD LAND 4-64 5-4 1BH, BD LAND 4-64 5-4 2AH, BD LAND 4-64 5-4 2BH, BD LAND 4-64 5-4 3AH, BD LAND 4-64 5-4 3BH, BD LAND 4-64 5-4 4AH, BOMHOFF WEST 4-64 9-8-7 1AH, BOMHOFF WEST 4-64 9-8-7 1BH, TRANSPORT 3-64 34-35-36 1AH, TRANSPORT 3-64 34-35-36 1BH, TRANSPORT 3-64 34-35-36 2AH, TRANSPORT 3-64 34-35-36 2BH, TRANSPORT 3-64 34-35-36 3AH, TRANSPORT 3-64 34-35-36 3BH, TRANSPORT 3-64 34-35-36 4AH, TRANSPORT 3-64 34-35-36 4BH, BOMHOFF EAST 4-64 10-11-12 1AH, BOMHOFF EAST 4-64 10-11-12 1BH, BOMHOFF EAST 4-64 10-11-12 2AH, BOMHOFF EAST 4-64 10-11-12 2BH & BOMHOFF EAST 4-64 10-11-12 3AH LOCATED IN SECTIONS 32, 33, 34, 35 & 36, T3S, R64W, 6TH P.M., ADAMS COUNTY, COLORADO & SECTIONS 3, 4, 5, 7, 8, 9, 10, 11 & 12, T4S, R64W, 6TH P.M., ARAPAHOE COUNTY, COLORADO			
DRAFTED BY:	SJM	CHECKED BY:	RKF
DATE DRAFTED:	10/29/24	DATE SURVEYED:	10/11/24
REVISED:		FILE NAME:	23-182
			SHEET NO: 1E 1E OF 1

K:\CIVITAS RESOURCES\2023\1023_182_50636_T3S_R64W_SEC_36\PLATS\BENNET D\TRANSPORT 3-64 34-35-36.dwg, 10/29/2024 4:18:15 PM, jkmundis

DIRECTIONAL WELL PLAT (ECMC) / MULTI-WELL PLAN (OGED)

SECTIONS 32, 33, 34, 35 & 36, T3S, R64W, 6TH P.M., ADAMS COUNTY, COLORADO & SECTIONS 3, 4, 5, 7, 8, 9, 10, 11 & 12, T4S, R64W, 6TH P.M., ARAPAHOE COUNTY, COLORADO

WELL NOTES:

FRASER FED 3-64 33-32 1BH
SURFACE HOLE LOCATION: 827' FSL, 1826' FEL (SEC. 34, T3S, R64W)
HEEL LOCATION: 1120' FNL, 150' FEL (SEC. 33, T3S, R64W)
BOTTOM HOLE LOCATION: 1120' FNL, 150' FWL (SEC. 32, T3S, R64W)

FRASER FED 3-64 33-32 2BH
SURFACE HOLE LOCATION: 807' FSL, 1826' FEL (SEC. 34, T3S, R64W)
HEEL LOCATION: 2200' FNL, 150' FEL (SEC. 33, T3S, R64W)
BOTTOM HOLE LOCATION: 2200' FNL, 150' FWL (SEC. 32, T3S, R64W)

FRASER FED 3-64 33-32 3BH
SURFACE HOLE LOCATION: 787' FSL, 1826' FEL (SEC. 34, T3S, R64W)
HEEL LOCATION: 1820' FNL, 150' FEL (SEC. 33, T3S, R64W)
BOTTOM HOLE LOCATION: 1820' FNL, 150' FWL (SEC. 32, T3S, R64W)

FRASER FED 3-64 33-32 4BH
SURFACE HOLE LOCATION: 767' FSL, 1826' FEL (SEC. 34, T3S, R64W)
HEEL LOCATION: 350' FSL, 150' FEL (SEC. 33, T3S, R64W)
BOTTOM HOLE LOCATION: 350' FSL, 150' FWL (SEC. 32, T3S, R64W)

BD LAND 4-64 5-4 1AH
SURFACE HOLE LOCATION: 785' FSL, 2026' FEL (SEC. 34, T3S, R64W)
HEEL LOCATION: 350' FNL, 150' FEL (SEC. 4, T4S, R64W)
BOTTOM HOLE LOCATION: 350' FNL, 150' FWL (SEC. 5, T4S, R64W)

BD LAND 4-64 5-4 1BH
SURFACE HOLE LOCATION: 765' FSL, 2026' FEL (SEC. 34, T3S, R64W)
HEEL LOCATION: 925' FNL, 150' FEL (SEC. 4, T4S, R64W)
BOTTOM HOLE LOCATION: 925' FNL, 150' FWL (SEC. 5, T4S, R64W)

BD LAND 4-64 5-4 2AH
SURFACE HOLE LOCATION: 745' FSL, 2026' FEL (SEC. 34, T3S, R64W)
HEEL LOCATION: 1500' FNL, 150' FEL (SEC. 4, T4S, R64W)
BOTTOM HOLE LOCATION: 1500' FNL, 150' FWL (SEC. 5, T4S, R64W)

BD LAND 4-64 5-4 2BH
SURFACE HOLE LOCATION: 725' FSL, 2026' FEL (SEC. 34, T3S, R64W)
HEEL LOCATION: 2075' FNL, 150' FEL (SEC. 4, T4S, R64W)
BOTTOM HOLE LOCATION: 2075' FNL, 150' FWL (SEC. 5, T4S, R64W)

BD LAND 4-64 5-4 3AH
SURFACE HOLE LOCATION: 705' FSL, 2026' FEL (SEC. 34, T3S, R64W)
HEEL LOCATION: 2630' FNL, 150' FEL (SEC. 4, T4S, R64W)
BOTTOM HOLE LOCATION: 2630' FNL, 150' FWL (SEC. 5, T4S, R64W)

BD LAND 4-64 5-4 3BH
SURFACE HOLE LOCATION: 685' FSL, 2026' FEL (SEC. 34, T3S, R64W)
HEEL LOCATION: 2055' FNL, 150' FEL (SEC. 4, T4S, R64W)
BOTTOM HOLE LOCATION: 2055' FNL, 150' FWL (SEC. 5, T4S, R64W)

BD LAND 4-64 5-4 4AH
SURFACE HOLE LOCATION: 665' FSL, 2026' FEL (SEC. 34, T3S, R64W)
HEEL LOCATION: 1480' FNL, 150' FEL (SEC. 4, T4S, R64W)
BOTTOM HOLE LOCATION: 1480' FNL, 150' FWL (SEC. 5, T4S, R64W)

BOMHOFF WEST 4-64 9-8-7 1AH
SURFACE HOLE LOCATION: 645' FSL, 2026' FEL (SEC. 34, T3S, R64W)
HEEL LOCATION: 350' FNL, 150' FEL (SEC. 9, T4S, R64W)
BOTTOM HOLE LOCATION: 350' FNL, 150' FWL (SEC. 7, T4S, R64W)

BOMHOFF WEST 4-64 9-8-7 1BH
SURFACE HOLE LOCATION: 625' FSL, 2026' FEL (SEC. 34, T3S, R64W)
HEEL LOCATION: 950' FNL, 150' FEL (SEC. 9, T4S, R64W)
BOTTOM HOLE LOCATION: 950' FNL, 150' FWL (SEC. 7, T4S, R64W)

TRANSPORT 3-64 34-35-36 1AH
SURFACE HOLE LOCATION: 825' FSL, 2026' FEL (SEC. 34, T3S, R64W)
HEEL LOCATION: 350' FNL, 150' FWL (SEC. 34, T3S, R64W)
BOTTOM HOLE LOCATION: 350' FNL, 150' FWL (SEC. 36, T3S, R64W)

TRANSPORT 3-64 34-35-36 1BH
SURFACE HOLE LOCATION: 805' FSL, 2026' FEL (SEC. 34, T3S, R64W)
HEEL LOCATION: 1005' FNL, 150' FWL (SEC. 34, T3S, R64W)
BOTTOM HOLE LOCATION: 1005' FNL, 150' FWL (SEC. 36, T3S, R64W)

TRANSPORT 3-64 34-35-36 2AH
SURFACE HOLE LOCATION: 747' FSL, 1826' FEL (SEC. 34, T3S, R64W)
HEEL LOCATION: 1660' FNL, 150' FWL (SEC. 34, T3S, R64W)
BOTTOM HOLE LOCATION: 1660' FNL, 150' FWL (SEC. 36, T3S, R64W)

TRANSPORT 3-64 34-35-36 2BH
SURFACE HOLE LOCATION: 727' FSL, 1826' FEL (SEC. 34, T3S, R64W)
HEEL LOCATION: 2315' FNL, 150' FWL (SEC. 34, T3S, R64W)
BOTTOM HOLE LOCATION: 2315' FNL, 150' FWL (SEC. 36, T3S, R64W)

TRANSPORT 3-64 34-35-36 3AH
SURFACE HOLE LOCATION: 707' FSL, 1826' FEL (SEC. 34, T3S, R64W)
HEEL LOCATION: 2315' FSL, 150' FWL (SEC. 34, T3S, R64W)
BOTTOM HOLE LOCATION: 2315' FSL, 0' FEL (SEC. 35, T3S, R64W)

TRANSPORT 3-64 34-35-36 3BH
SURFACE HOLE LOCATION: 687' FSL, 1826' FEL (SEC. 34, T3S, R64W)
HEEL LOCATION: 1660' FSL, 150' FWL (SEC. 34, T3S, R64W)
BOTTOM HOLE LOCATION: 1660' FSL, 150' FWL (SEC. 36, T3S, R64W)

TRANSPORT 3-64 34-35-36 4AH
SURFACE HOLE LOCATION: 667' FSL, 1826' FEL (SEC. 34, T3S, R64W)
HEEL LOCATION: 1005' FSL, 150' FWL (SEC. 34, T3S, R64W)
BOTTOM HOLE LOCATION: 1005' FSL, 150' FWL (SEC. 36, T3S, R64W)

TRANSPORT 3-64 34-35-36 4BH
SURFACE HOLE LOCATION: 647' FSL, 1826' FEL (SEC. 34, T3S, R64W)
HEEL LOCATION: 350' FSL, 150' FWL (SEC. 34, T3S, R64W)
BOTTOM HOLE LOCATION: 350' FSL, 150' FWL (SEC. 36, T3S, R64W)

BOMHOFF EAST 4-64 10-11-12 1AH
SURFACE HOLE LOCATION: 627' FSL, 1826' FEL (SEC. 34, T3S, R64W)
HEEL LOCATION: 350' FNL, 150' FWL (SEC. 10, T4S, R64W)
TARGET POINT: 350' FNL, 0' FWL (SEC. 12, T4S, R64W)
BOTTOM HOLE LOCATION: 350' FNL, 150' FWL (SEC. 12, T4S, R64W)

BOMHOFF EAST 4-64 10-11-12 1BH
SURFACE HOLE LOCATION: 607' FSL, 1826' FEL (SEC. 34, T3S, R64W)
HEEL LOCATION: 900' FNL, 150' FWL (SEC. 10, T4S, R64W)
TARGET POINT: 1100' FNL, 0' FWL (SEC. 12, T4S, R64W)
BOTTOM HOLE LOCATION: 1100' FNL, 150' FWL (SEC. 12, T4S, R64W)

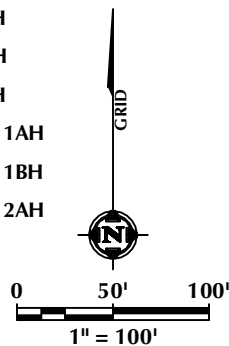
BOMHOFF EAST 4-64 10-11-12 2AH
SURFACE HOLE LOCATION: 587' FSL, 1826' FEL (SEC. 34, T3S, R64W)
HEEL LOCATION: 1450' FNL, 150' FWL (SEC. 10, T4S, R64W)
TARGET POINT: 1850' FNL, 0' FWL (SEC. 12, T4S, R64W)
BOTTOM HOLE LOCATION: 1850' FNL, 150' FWL (SEC. 12, T4S, R64W)

BOMHOFF EAST 4-64 10-11-12 2BH
SURFACE HOLE LOCATION: 605' FSL, 2026' FEL (SEC. 34, T3S, R64W)
HEEL LOCATION: 2000' FNL, 150' FWL (SEC. 10, T4S, R64W)
TARGET POINT: 2600' FNL, 0' FWL (SEC. 12, T4S, R64W)
BOTTOM HOLE LOCATION: 2600' FNL, 150' FWL (SEC. 12, T4S, R64W)

BOMHOFF EAST 4-64 10-11-12 3AH
SURFACE HOLE LOCATION: 585' FSL, 2026' FEL (SEC. 34, T3S, R64W)
HEEL LOCATION: 2550' FNL, 150' FWL (SEC. 10, T4S, R64W)
TARGET POINT: 1930' FSL, 0' FWL (SEC. 12, T4S, R64W)
BOTTOM HOLE LOCATION: 1930' FSL, 150' FWL (SEC. 12, T4S, R64W)

WELL HEAD SPACING DETAIL

TRANSPORT 3-64 34-35-36 1AH	20'	FRASER FED 3-64 33-32 1BH	20'
TRANSPORT 3-64 34-35-36 1BH	20'	FRASER FED 3-64 33-32 2BH	20'
BD LAND 4-64 5-4 1AH	20'	FRASER FED 3-64 33-32 3BH	20'
BD LAND 4-64 5-4 1BH	20'	FRASER FED 3-64 33-32 4BH	20'
BD LAND 4-64 5-4 2AH	20'	TRANSPORT 3-64 34-35-36 2AH	20'
BD LAND 4-64 5-4 2BH	20'	TRANSPORT 3-64 34-35-36 2BH	20'
BD LAND 4-64 5-4 3AH	20'	TRANSPORT 3-64 34-35-36 3AH	20'
BD LAND 4-64 5-4 3BH	20'	TRANSPORT 3-64 34-35-36 3BH	20'
BD LAND 4-64 5-4 4AH	20'	TRANSPORT 3-64 34-35-36 4AH	20'
BOMHOFF WEST 4-64 9-8-7 1AH	20'	TRANSPORT 3-64 34-35-36 4BH	20'
BOMHOFF WEST 4-64 9-8-7 1BH	20'	BOMHOFF EAST 4-64 10-11-12 1AH	20'
BOMHOFF EAST 4-64 10-11-12 2BH	20'	BOMHOFF EAST 4-64 10-11-12 1BH	20'
BOMHOFF EAST 4-64 10-11-12 3AH	20'	BOMHOFF EAST 4-64 10-11-12 2AH	20'



WELL PAD - BENNET D

DIRECTIONAL WELL PLAT (ECMC) / MULTI-WELL PLAN (OGED)
FRASER FED 3-64 33-32 1BH, FRASER FED 3-64 33-32 2BH,
FRASER FED 3-64 33-32 3BH, FRASER FED 3-64 33-32 4BH,
BD LAND 4-64 5-4 1AH, BD LAND 4-64 5-4 1BH,
BD LAND 4-64 5-4 2AH, BD LAND 4-64 5-4 2BH,
BD LAND 4-64 5-4 3AH, BD LAND 4-64 5-4 3BH,
BD LAND 4-64 5-4 4AH, BOMHOFF WEST 4-64 9-8-7 1AH,
BOMHOFF WEST 4-64 9-8-7 1BH, TRANSPORT 3-64 34-35-36 1AH,
TRANSPORT 3-64 34-35-36 1BH, TRANSPORT 3-64 34-35-36 2AH,
TRANSPORT 3-64 34-35-36 2BH, TRANSPORT 3-64 34-35-36 3AH,
TRANSPORT 3-64 34-35-36 3BH, TRANSPORT 3-64 34-35-36 4AH,
TRANSPORT 3-64 34-35-36 4BH, BOMHOFF EAST 4-64 10-11-12 1AH,
BOMHOFF EAST 4-64 10-11-12 1BH, BOMHOFF EAST 4-64 10-11-12 2AH,
BOMHOFF EAST 4-64 10-11-12 2BH & BOMHOFF EAST 4-64 10-11-12 3AH
LOCATED IN SECTIONS 32, 33, 34, 35 & 36, T3S, R64W, 6TH P.M., ADAMS COUNTY, COLORADO &
SECTIONS 3, 4, 5, 7, 8, 9, 10, 11 & 12, T4S, R64W, 6TH P.M., ARAPAHOE COUNTY, COLORADO

DRAFTED BY:	SJM	CHECKED BY:	RKF	SHEET NO:
DATE DRAFTED:	10/29/24	DATE SURVEYED:	10/11/24	1F
REVISED:		FILE NAME:	23-182	1F OF 1

609

LOVELAND OFFICE
6706 North Franklin Avenue
Loveland, Colorado 80538
Phone 970-776-4331

SHERIDAN OFFICE
1095 Saberton Avenue
Sheridan, Wyoming 82801
Phone 307-674-0609

CONSULTING, LLC

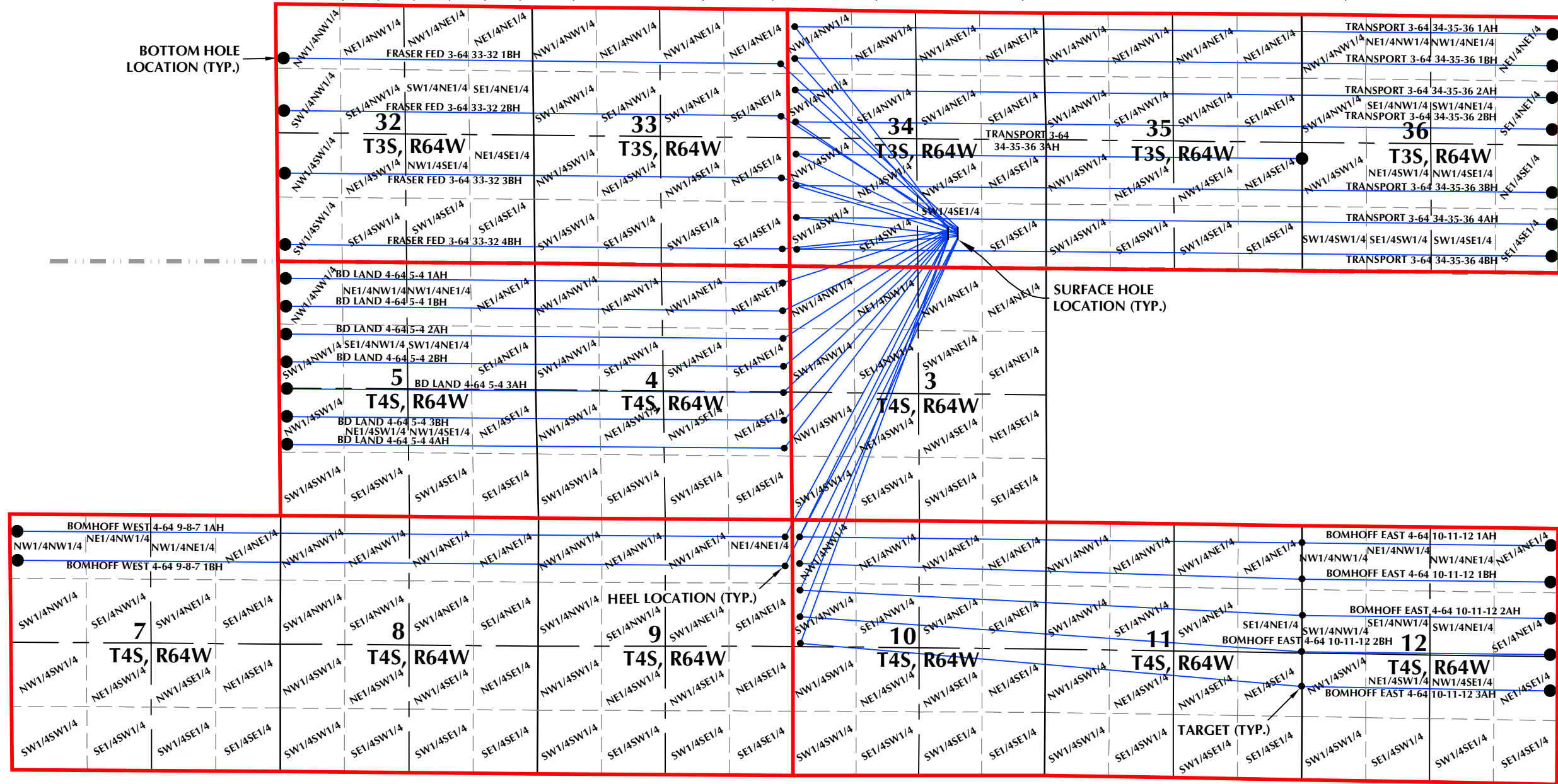
Prepared For:

CIVITAS

CRESTONE PEAK RESOURCES, LLC
555 17TH STREET, SUITE 3700
DENVER, CO 80202

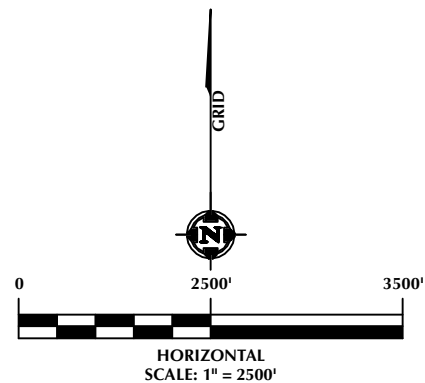
DIRECTIONAL WELL PLAT (ECMC) / MULTI-WELL PLAN (OGED)

SECTIONS 32, 33, 34, 35 & 36, T3S, R64W, 6TH P.M., ADAMS COUNTY, COLORADO & SECTIONS 3, 4, 5, 7, 8, 9, 10, 11 & 12, T4S, R64W, 6TH P.M., ARAPAHOE COUNTY, COLORADO



ADAMS COUNTY
ARAPAHOE COUNTY

- LEGEND:**
- DSU BOUNDARY
 - WELLBORE TRAJECTORY
 - HEEL LOCATION/TARGET
 - BOTTOM HOLE LOCATION



LOVELAND OFFICE
6706 North Franklin Avenue
Loveland, Colorado 80538
Phone 970-776-4331

SHERIDAN OFFICE
1095 Saberton Avenue
Sheridan, Wyoming 82801
Phone 307-674-0609

Prepared For:

CIVITAS
CRESTONE PEAK RESOURCES, LLC
555 17TH STREET, SUITE 3700
DENVER, CO 80202

WELL PAD - BENNET D			
DIRECTIONAL WELL PLAT (ECMC) /MULTI-WELL PLAN (OGED) FRASER FED 3-64 33-32 1BH, FRASER FED 3-64 33-32 2BH, FRASER FED 3-64 33-32 3BH, FRASER FED 3-64 33-32 4BH, BD LAND 4-64 5-4 1AH, BD LAND 4-64 5-4 1BH, BD LAND 4-64 5-4 2AH, BD LAND 4-64 5-4 2BH, BD LAND 4-64 5-4 3AH, BD LAND 4-64 5-4 3BH, BD LAND 4-64 5-4 4AH, BOMHOFF WEST 4-64 9-8-7 1AH, BOMHOFF WEST 4-64 9-8-7 1BH, TRANSPORT 3-64 34-35-36 1AH, TRANSPORT 3-64 34-35-36 1BH, TRANSPORT 3-64 34-35-36 2AH, TRANSPORT 3-64 34-35-36 2BH, TRANSPORT 3-64 34-35-36 3AH, TRANSPORT 3-64 34-35-36 3BH, TRANSPORT 3-64 34-35-36 4AH, TRANSPORT 3-64 34-35-36 4BH, BOMHOFF EAST 4-64 10-11-12 1AH, BOMHOFF EAST 4-64 10-11-12 1BH, BOMHOFF EAST 4-64 10-11-12 2AH, BOMHOFF EAST 4-64 10-11-12 2BH & BOMHOFF EAST 4-64 10-11-12 3AH LOCATED IN SECTIONS 32, 33, 34, 35 & 36, T3S, R64W, 6TH P.M., ADAMS COUNTY, COLORADO & SECTIONS 3, 4, 5, 7, 8, 9, 10, 11 & 12, T4S, R64W, 6TH P.M., ARAPAHOE COUNTY, COLORADO			
DRAFTED BY:	SJM	CHECKED BY:	RKF
DATE DRAFTED:	10/29/24	DATE SURVEYED:	10/11/24
REVISED:		FILE NAME:	23-182
			SHEET NO: 1G 1G OF 1

K:\CIVITAS RESOURCES\2023\1023_182_S02R6_T3S_R64W_SEC_36\PLANS\BENNET D\BENNET D.dwg, 10/29/2024 3:18:09 PM, srt@r