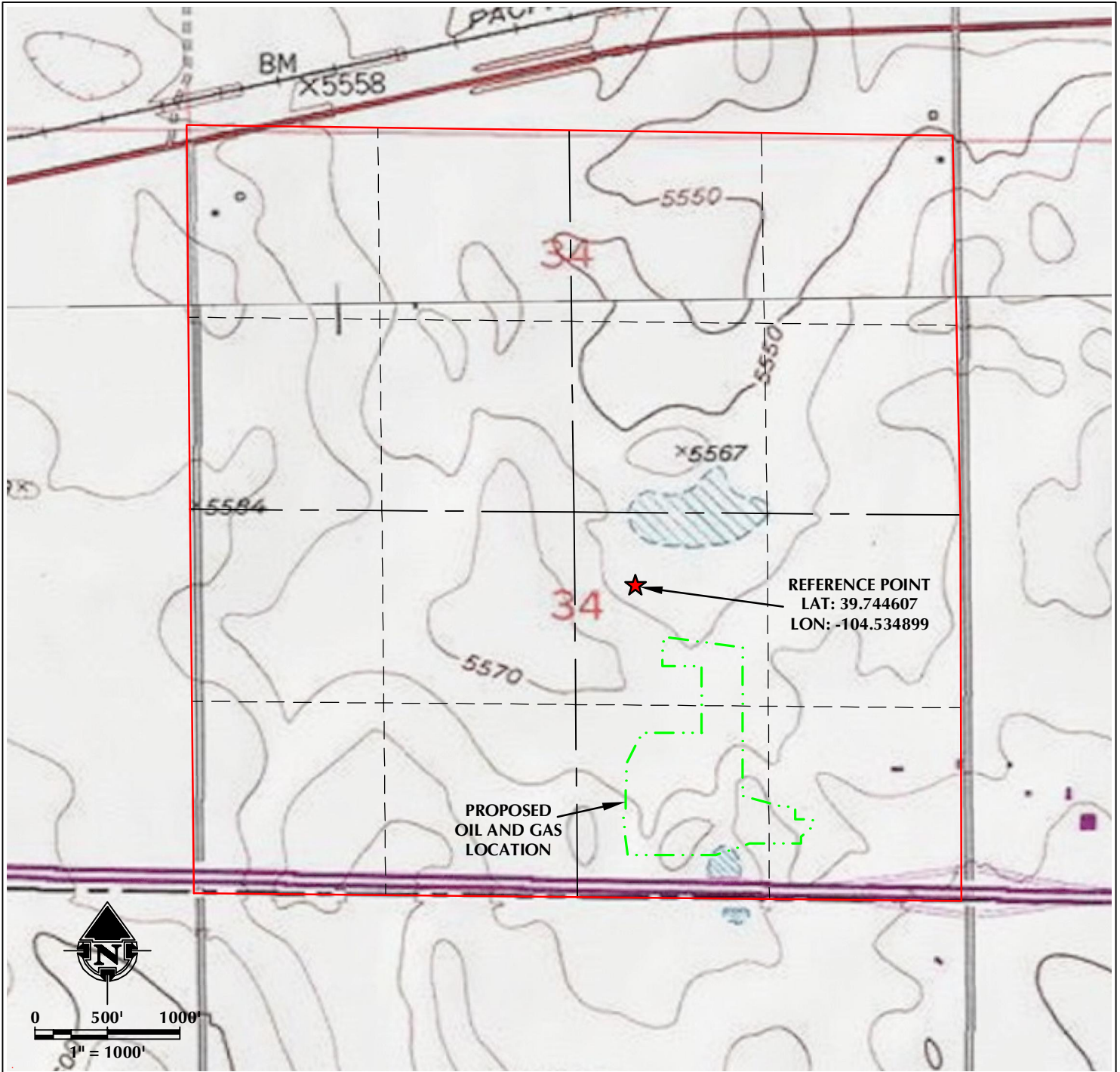


# REFERENCE AREA MAP

## BENNETT D PAD

SECTION 34, TOWNSHIP 3 SOUTH, RANGE 64 WEST, 6TH P.M., ADAMS COUNTY, COLORADO



### LEGEND

- PROPOSED OIL AND GAS LOCATION
- SECTION LINE
- SECTION 1/4 LINE
- SECTION 1/4 1/4 LINE
- REFERENCE POINT



**609 CONSULTING, LLC**  
LOVELAND OFFICE  
6706 North Franklin Avenue  
Loveland, Colorado 80538  
Phone 970-776-4331

SHERIDAN OFFICE  
1095 Saberton Avenue  
Sheridan, Wyoming 82801  
Phone 307-674-0609

DATE SURVEYED: 9/23/24  
DATE: 10/17/24  
DRAFTER: GLK  
REVISED:

DATA SOURCES:  
- TOPOGRAPHIC MAP IS COURTESY  
OF USGS

PREPARED FOR:



CRESTONE PEAK RESOURCES, LLC  
555 17TH STREET, SUITE 3700  
DENVER, CO 80202