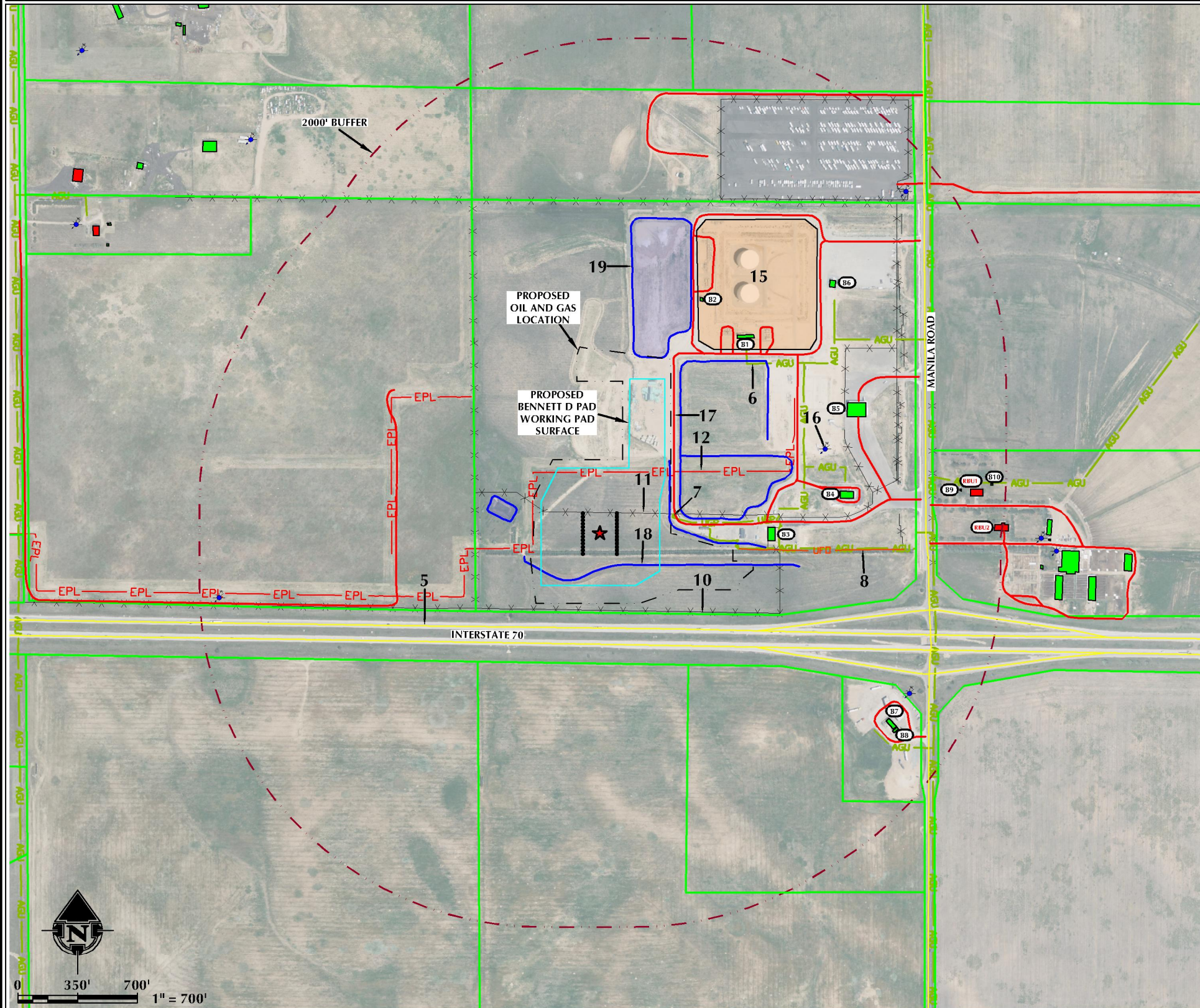


LOCATION DRAWING BENNETT D PAD

SECTION 34, TOWNSHIP 3 SOUTH, RANGE 64 WEST, 6TH P.M., ADAMS COUNTY, COLORADO



ID	FEATURE	DISTANCE/BEARING (MEASURED FROM WORKING PAD SURFACE)
B	BUILDING	B1 ±486' NE, B2 ±501' NE, B3 ±636' E, B4 ±1031' E, B5 ±1069' E, B6 ±1105' NE, B7 ±1591' SE, B8 ±1656' SE, B9 ±1729' E, B10 ±1910' E
RBU/NBU	RESIDENTIAL/NON-RESIDENTIAL BUILDING UNIT	RBU1 ±1791' E, RBU2 ±1951' E
1	HIGH OCCUPANCY BUILDING UNIT	N/A
2	SCHOOL FACILITY	N/A
3	DESIGNATED OUTDOOR ACTIVITY AREA	N/A
4	DISPROPORTIONATELY IMPACTED COMMUNITY	N/A
5	PUBLIC ROAD	±229' S (INTERSTATE 70), ±1501' E (MANILLA ROAD)
6	ABOVE GROUND UTILITY	±461' E, ±487' E, ±695' E, ±811' E, ±1019' E, ±1562' E, ±1566' SE, ±1567' SE
7	BURIED UTILITY	±77' E, ±80' E, ±293' E, ±447' E, ±454' E, ±618' E, ±687' E, ±707' E
8	BURIED FIBER OPTIC LINE	±466' E
9	RAILROAD	N/A
10	PROPERTY LINE	±150' S, ±383' W, ±450' S, ±556' SE, ±578' SW, ±1042' N, ±1237' SE, ±1400' NW, ±1569' E, ±1570' E, ±1698' N, ±1705' N, ±1834' SE, ±1851' NE, ±1946' NW
11	FENCE	±0', ±139' S, ±677' E, ±1052' E, ±1105' N, ±1358' E, ±1367' E, ±1389' E, ±1395' NW, ±1403' E, ±1452' E, ±1566' E, ±1626' NE
12	PIPELINE	±0', ±659' NW
13	EXISTING OIL AND GAS WELL	N/A
14	PLUGGED OIL AND GAS WELL	N/A
15	EXISTING FACILITY	±298' NE
16	WATER WELL	±939' E, ±1631' SE, ±1789' NE, ±1887' SW
17	PRIVATE ROAD	±52' E, ±256' NE, ±360' NE, ±538' N, ±580' E, ±627' E, ±770' E, ±846' W, ±1132' E, ±1134' E, ±1321' N, ±1525' SE, ±1566' E, ±1587' E, ±1776' NE, ±1934' NE
18	DITCH/DRAINAGE/CANAL	±0', ±18' E, ±69' E
19	POND	±123' N, ±141' W
★	REFERENCE LOCATION	LAT: 39.740597° LAT: -104.533813° GPS QUALITY VALUE: 1.5 TYPE OF GPS QUALITY VALUE: PDOP

LEGEND

EXISTING WELL	PROPOSED OIL AND GAS LOCATION	EXISTING FENCE	SCHOOL
P&A WELL	PROPOSED WORKING PAD SURFACE	PROPERTY LINE	CHILD CARE
WATER WELL	EXISTING PIPELINE	EXISTING FACILITY	POND
PROPOSED WELL	ABOVE GROUND UTILITY	EXISTING BUILDING	
PUBLIC ROAD	BURIED UTILITY	RESIDENTIAL BUILDING UNIT	
PRIVATE ROAD	BURIED FIBER OPTIC LINE	NON-RESIDENTIAL BUILDING UNIT	
		DISPROPORTIONATELY IMPACTED COMMUNITY	

609

CONSULTING, LLC

LOVELAND OFFICE
6706 North Franklin Avenue
Loveland, Colorado 80538
Phone 970-776-4331

SHERIDAN OFFICE
1095 Saberton Avenue
Sheridan, Wyoming 82801
Phone 307-674-0609

Prepared For:

CIVITAS
CRESTONE PEAK RESOURCES, LLC
555 17TH STREET, SUITE 3700
DENVER, CO 80202

DATE SURVEYED: 9/24/24
DATE: 9/30/24
DRAFTER: GLK
REVISED:

NOTES:
-ALL MEASUREMENTS ARE MADE FROM THE WORKING PAD SURFACE.
-VISIBLE FEATURES SHOWN AND LISTED HEREON THAT ARE LYING OUTSIDE THE SURFACE PROPERTY MAY HAVE BEEN OBTAINED FROM THE AERIAL PHOTO AND OTHER PUBLICLY AVAILABLE DATA. EXISTING CONDITIONS MAY DIFFER FROM WHAT IS SHOWN.

K:\CIVITAS RESOURCES\2023\2023_182_S0C26_TP35_N64W_SEC_36\DWG\LOC36_BENNETT.dwg, 9/30/2024 11:50:30 AM, jcmrands